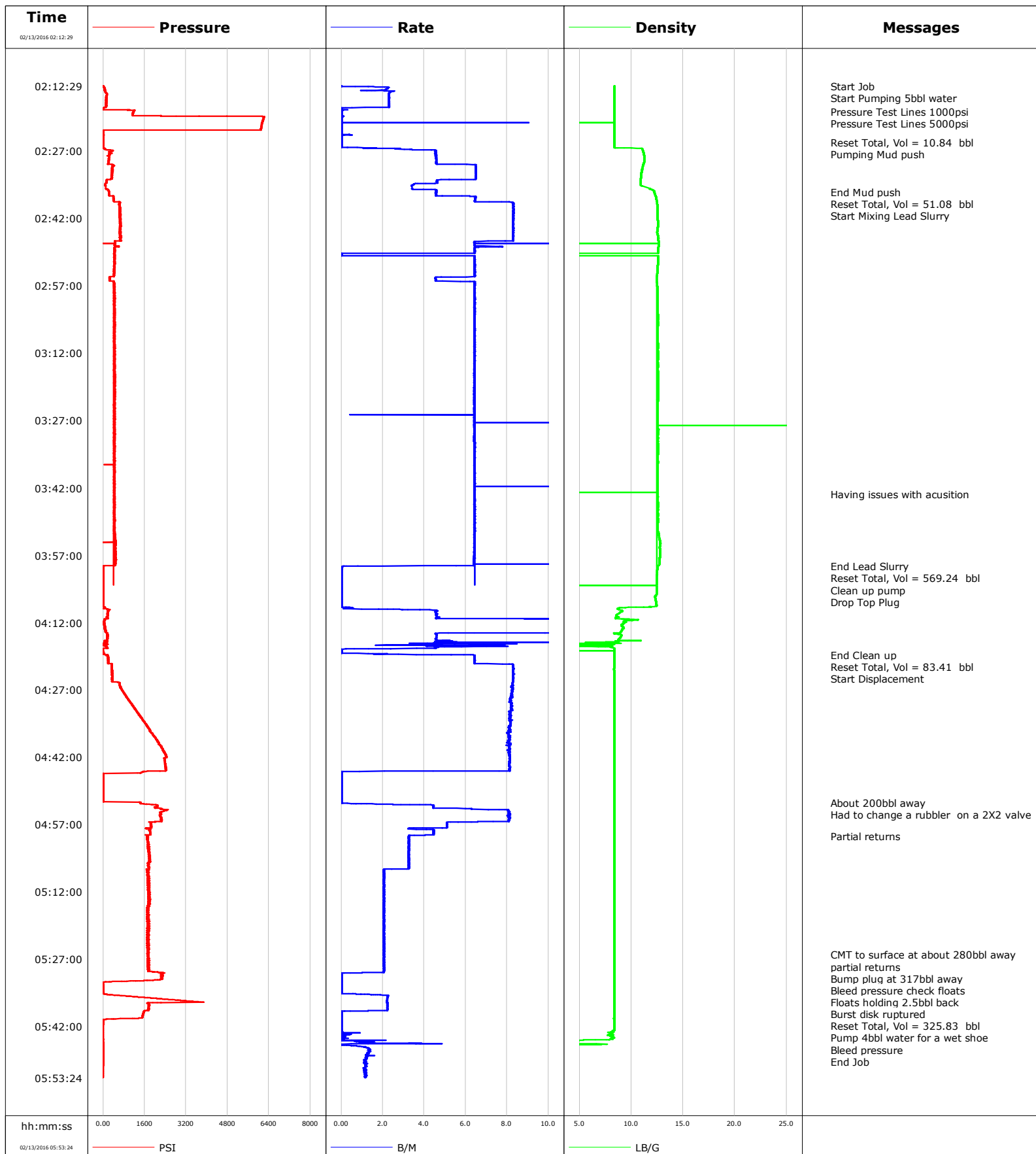
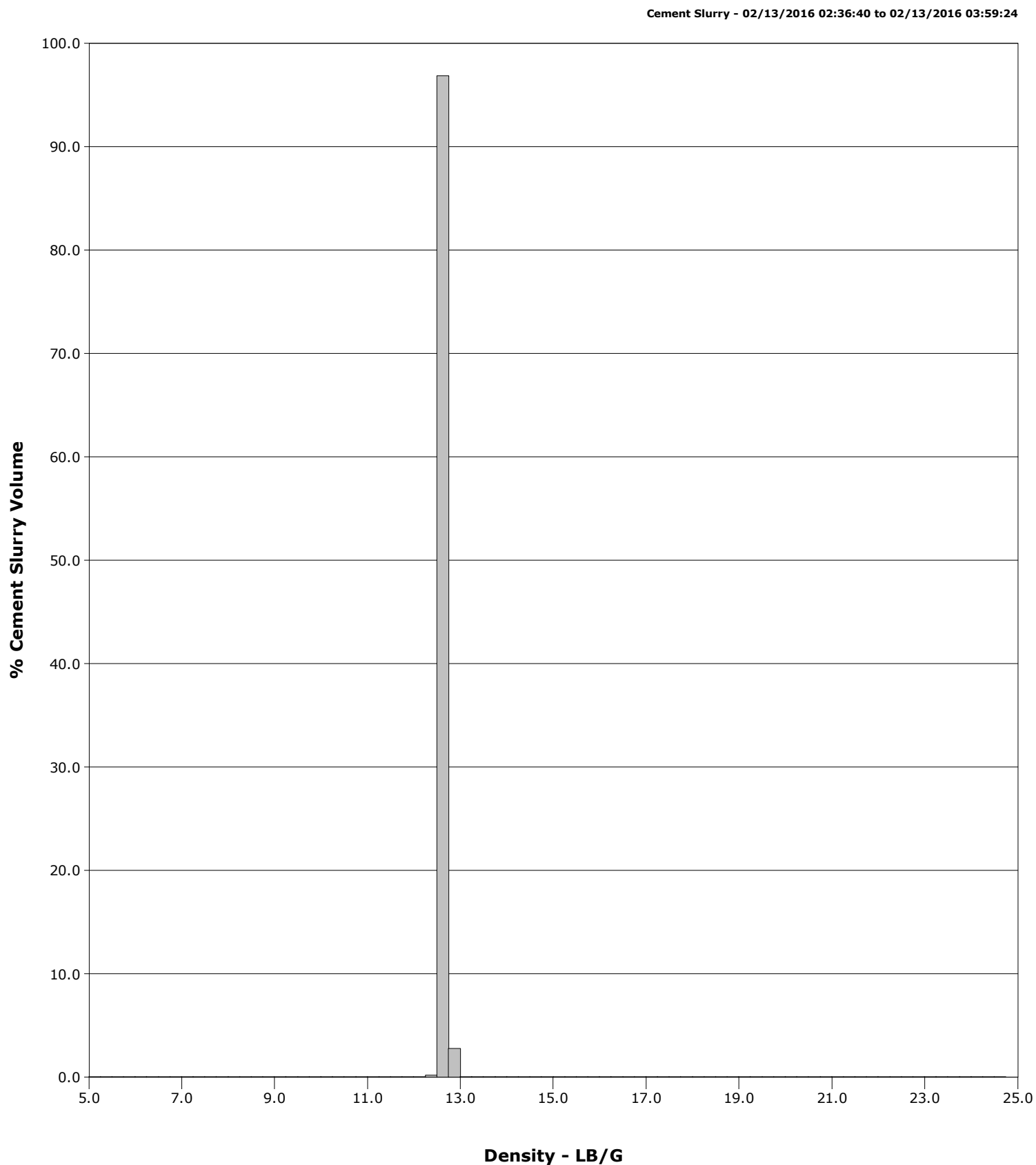


<b>Well</b>	Fairview	<b>Client</b>	Extraction
<b>Field</b>	DJ	<b>SIR No.</b>	CYUT-00170
<b>Engineer</b>	Chris Valerio/Taylor Baird	<b>Job Type</b>	Production
<b>Country</b>	United States	<b>Job Date</b>	02-13-2016



**Well** Fairview  
**Field** DJ  
**Engineer** Chris Valerio/Taylor Baird  
**Country** United States

**Client** Extraction  
**SIR No.** CYUT-00170  
**Job Type** Production  
**Job Date** 02-13-2016



# Cementing Service Report

				Customer Extraction				Job Number CYUT-00170			
Well Fairview #2			Location (legal)			Schlumberger Location			Job Start Feb/13/2016		
Field DJ		Formation Name/Type Shale		Deviation 90 deg		Bit Size 7.9 in		Well MD 14282.0 ft		Well TVD 7680.0 ft	
County Weld		State/Province Colorado		BHP psi		BHST 217 degF		BHCT 217 degF		Pore Press. Gradient lb/gal	
Well Master 0631657836		API/UWI 05123416660000									
Rig Name Savanna #802		Drilled For Oil		Service Via Land		Casing/ Liner					
						Depth, ft		Size, in		Weight, lb/ft	
										Grade	
										Thread	
Offshore Zone		Well Class New		Well Type Development		1550.0		9.6		36.0	
						14282.0		5.5		20.0	
										H40	
										P110	
										8RD	
										BUTT	
Drilling Fluid Type Oil Mud		Max. Density 9.80 lb/gal		Plastic Viscosity cP		Tubing/Drill Pipe					
						T/D		Depth, ft		Size, in	
										Weight, lb/ft	
										Grade	
										Thread	
Service Line Cementing		Job Type Production									
Max. Allowed Tub. Press 4500 psi		Max. Allowed Ann. Press psi		WH Connection Single Cement head		Perforations/Open Hole					
						Top, ft		Bottom, ft		shot/ft	
										No. of Shots	
										Total Interval ft	
										Diameter in	
						Treat Down Casing		Displacement 316.9 bbl		Packer Type	
										Packer Depth ft	
						Tubing Vol. bbl		Casing Vol. 317.0 bbl		Annular Vol. 468.0 bbl	
										Openhole Vol. bbl	
Casing/Tubing Secured <input checked="" type="checkbox"/>		1 Hole Vol. Circulated prior to Cement <input checked="" type="checkbox"/>				Casing Tools				Squeeze Job	
Lift Pressure psi						Shoe Type Float				Squeeze Type	
Pipe Rotated <input type="checkbox"/>		Pipe Reciprocated <input type="checkbox"/>				Shoe Depth 14282.0 ft				Tool Type	
No. Centralizers		Top Plugs 1		Bottom Plugs		Stage Tool Type				Tool Depth ft	
Cement Head Type Single						Stage Tool Depth ft				Tail Pipe Size in	
Job Scheduled For Feb/13/2016 00:00		Arrived on Location Feb/13/2016 00:00		Leave Location Feb/13/2016 07:00		Collar Type Float				Tail Pipe Depth ft	
						Collar Depth 14277.0 ft				Sqz. Total Vol. bbl	
Date	Time 24-hr clock	Treating Pressure PSI	Flow Rate B/M	Density LB/G	Volume BBL	Message					
02/13/2016	02:12:29	5	0.0	8.36	73.4	Started Acquisition					
02/13/2016	02:12:32	5	0.0	8.36	73.4	Start Job					
02/13/2016	02:17:29	17	0.0	8.36	9.0						
02/13/2016	02:18:15	1172	0.0	8.36	9.0	Pressure Test Lines 1000psi					
02/13/2016	02:19:47	6184	0.0	8.35	9.0	Pressure Test Lines 5000psi					
02/13/2016	02:22:29	17	0.0	8.35	9.0						
02/13/2016	02:25:00	1	0.0	8.36	9.1	Reset Total, Vol = 10.84 bbl					
02/13/2016	02:26:25	33	1.3	10.94	9.4	Pumping Mud push					
02/13/2016	02:27:29	239	4.5	11.19	13.6						
02/13/2016	02:32:29	337	6.5	10.95	41.2						
02/13/2016	02:36:09	223	4.6	12.22	58.3	End Mud push					
02/13/2016	02:36:33	223	4.6	12.26	60.1	Reset Total, Vol = 51.08 bbl					
02/13/2016	02:36:40	225	4.6	12.29	60.7	Start Mixing Lead Slurry					
02/13/2016	02:37:29	404	6.5	12.40	65.2						
02/13/2016	02:42:29	670	8.3	12.56	105.1						
02/13/2016	02:47:29	466	6.4	12.64	145.8						
02/13/2016	02:52:29	426	6.4	12.56	178.2						
02/13/2016	02:57:29	436	6.4	12.52	208.6						
02/13/2016	03:02:29	444	6.4	12.55	240.8						
02/13/2016	03:07:29	428	6.4	12.55	272.9						
02/13/2016	03:12:29	440	6.4	12.58	305.1						

Well			Field	Job Start		Customer	Job Number
Fairview #2			DJ	Feb/13/2016		Extraction	CYUT-00170
Date	Time 24-hr clock	Treating Pressure PSI	Flow Rate B/M	Density LB/G	Volume BBL	Message	
02/13/2016	03:22:29	444	6.4	12.57	369.3		
02/13/2016	03:27:29	441	6.4	12.54	401.4		
02/13/2016	03:32:29	439	6.4	12.59	433.5		
02/13/2016	03:37:29	427	6.4	12.55	465.6		
02/13/2016	03:42:29	442	6.4	12.55	497.8		
02/13/2016	03:43:29	439	6.4	12.56	504.2	Having issues with acusion	
02/13/2016	03:47:29	426	6.4	12.55	529.9		
02/13/2016	03:52:29	455	6.4	12.64	562.1		
02/13/2016	03:57:29	479	6.4	12.76	594.2		
02/13/2016	03:59:25	13	2.0	12.52	606.5	End Lead Slurry	
02/13/2016	03:59:31	10	0.1	12.56	606.6	Reset Total, Vol = 569.24 bbl	
02/13/2016	03:59:42	7	0.0	12.55	606.6	Clean up pump	
02/13/2016	03:59:44	6	0.0	12.54	606.6	Drop Top Plug	
02/13/2016	04:02:29	11	0.0	12.45	606.7		
02/13/2016	04:07:29	4	0.0	12.39	606.7		
02/13/2016	04:12:29	47	15.8	9.14	636.9		
02/13/2016	04:17:29	141	4.6	8.17	687.0		
02/13/2016	04:19:15	170	6.4	8.38	689.6	End Clean up	
02/13/2016	04:19:18	171	6.4	8.39	689.9	Reset Total, Vol = 83.41 bbl	
02/13/2016	04:19:23	124	6.4	8.38	690.5	Start Displacement	
02/13/2016	04:22:29	341	8.3	8.34	712.7		
02/13/2016	04:27:29	779	8.2	8.37	754.0		
02/13/2016	04:32:29	1378	8.1	8.37	795.0		
02/13/2016	04:37:29	1980	8.1	8.36	835.6		
02/13/2016	04:42:29	2366	8.1	8.36	876.1		
02/13/2016	04:47:29	6	0.0	8.37	897.8		
02/13/2016	04:52:09	1447	0.0	8.37	897.8	About 200bbl away	
02/13/2016	04:52:10	1447	0.0	8.37	897.8	Had to change a rubbler on a 2X2 valve	
02/13/2016	04:52:29	1682	1.9	8.37	897.9		
02/13/2016	04:57:29	1872	5.1	8.36	931.0		
02/13/2016	04:59:30	1705	3.3	8.36	939.8	Partial returns	
02/13/2016	05:02:29	1743	3.3	8.36	949.5		
02/13/2016	05:07:29	1745	2.0	8.37	965.1		
02/13/2016	05:12:29	1727	2.1	8.36	975.4		
02/13/2016	05:17:29	1725	2.0	8.37	985.7		
02/13/2016	05:22:29	1723	2.1	8.36	995.9		
02/13/2016	05:26:00	1768	2.0	8.36	1003.2	CMT to surface at about 280bbl away	
02/13/2016	05:26:39	1728	2.0	8.36	1004.5	partial returns	
02/13/2016	05:27:29	1746	2.0	8.36	1006.2		
02/13/2016	05:31:19	2266	0.0	8.37	1011.5	Bump plug at 317bbl away	
02/13/2016	05:31:52	1260	0.0	8.37	1011.5	Bleed pressure check floats	
02/13/2016	05:32:29	-1	0.0	8.36	1011.5		
02/13/2016	05:33:02	1	0.0	8.37	1011.5	Floats holding 2.5bbl back	
02/13/2016	05:36:38	3890	2.2	8.37	1015.4	Burst disk ruptured	
02/13/2016	05:36:57	1779	2.2	8.36	1016.1	Reset Total, Vol = 325.83 bbl	
02/13/2016	05:37:29	1748	2.2	8.36	1017.3		
02/13/2016	05:38:22	1723	2.2	8.36	1019.3	Pump 4bbl water for a wet shoe	
02/13/2016	05:38:50	1561	0.0	8.37	1019.7	Bleed pressure	
02/13/2016	05:42:29	-9	0.0	8.37	1019.7		
02/13/2016	05:46:50	3	1.3	0.07	1021.8	End Job	
02/13/2016	05:47:29	4	1.4	0.07	1022.6		

<b>Well</b> Fairview #2	<b>Field</b> DJ	<b>Job Start</b> Feb/13/2016	<b>Customer</b> Extraction	<b>Job Number</b> CYUT-00170
----------------------------	--------------------	---------------------------------	-------------------------------	---------------------------------

## Post Job Summary

Average Pump Rates, bbl/min					Volume of Fluid Injected, bbl							
<b>Slurry</b> 5.4	<b>N2</b>	<b>Mud</b>	<b>Maximum Rate</b> 8.0	<b>Total Slurry</b> 525.0	<b>Mud</b> 0.0	<b>Spacer</b> 50.0	<b>N2</b>					
Treating Pressure Summary, psi					Breakdown Fluid							
<b>Maximum</b> 3890	<b>Final</b> -2	<b>Average</b> 1000	<b>Bump Plug to</b> 2266	<b>Breakdown</b>	<b>Type</b>	<b>Volume</b> bbl	<b>Density</b> lb/gal					
<b>Avg. N2 Percent</b> %	<b>Designed Slurry Volume</b> 525.0 bbl	<b>Displacement</b> 317.0 bbl	<b>Mix Water Temp</b> 72 degF	<b>Cement Circulated to Surface?</b> <input checked="" type="checkbox"/>		<b>Volume</b> 37.0 bbl						
				<b>Washed Thru Perfs</b> <input type="checkbox"/>		<b>To</b> ft						
<b>Customer or Authorized Representative</b> Jose Torres			<b>Schlumberger Supervisor</b> Chris Valerio/Taylor Baird			<b>Circulation Lost</b> <input type="checkbox"/>	<b>Job Completed</b> <input checked="" type="checkbox"/>					
						-	-					