

RADIAL CEMENT BOND  
GAMMA RAY  
CCL

Company		ANADARKO PETROLEUM CORPORATION	
Well	PSC 15-11		
Field	WATTENBERG		
County	WELD	State	CO
Location:		API # : 05-123-21632 SW/SE	
LAT: 40.23385 & LONG: -104.85668		Other Services	
Permanent Datum	GL	Elevation	4770'
Log Measured From	KB 12'		
Drilling Measured From	KB		
SEC 11 TWP 3N RGE 67W			
Date	2-26-2016		
Run Number	ONE		
Depth Driller	7732'		
Depth Logger	1256'		
Bottom Logged Interval	1247'		
Top Log Interval	SURFACE		
Open Hole Size	7.875		
Type Fluid	WATER		
Density / Viscosity	1.0		
Max. Recorded Temp.	80 DEG F		
Estimated Cement Top	345'		
Time Well Ready	N/A		
Time Logger on Bottom	N/A		
Equipment Number	4310		
Location	GREELEY		
Recorded By	N. BREHMER		
Witnessed By	S. SLOAN		
Borehole Record			
Run Number	Bit	From	To
		Size	Weight
		From	To
Casing Record	Size	Wgt/Ft	Top
Surface String	8.63	24#	SURFACE
Prot. String			
Production String	4.5	11.6#	SURFACE
Liner			7726'

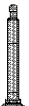
<<< Fold Here >>>

All interpretations are opinions based on inferences from electrical or other measurements and we cannot and do not guarantee the accuracy or correctness of any interpretation, and we shall not, except in the case of gross or willful negligence on our part, be liable or responsible for any loss, costs, damages, or expenses incurred or sustained by anyone resulting from any interpretation made by any of our officers, agents or employees. These interpretations are also subject to our general terms and conditions set out in our current Price Schedule.

Comments

RAN CBL TO VERIFY CEMENT BOND  
HOLE WAS LOADED NIGHT BEFORE LOGGING  
LOG RAN OFF KB DEPTH  
CALIBRATED FREE PIPE @1220' 81mA IN 4.5"

THANK YOU FOR USING IPS !!!!!!!

Sensor	Offset (ft)	Schematic	Description	Len (ft)	OD (in)	Wt (lb)
			1_4	1.00	1.36	5.00

Tool Joint	Tool Joint Length (ft)	Tool Joint Weight (lb)	Tool Joint O.D. (in)	Tool Joint Description	Tool Joint Weight (lb)	Tool Joint O.D. (in)	Tool Joint Length (ft)
HEADVOLT	16.13						
IntTemp	14.71						
WVFS3FT	11.46						
WVFCAL	11.46						
WVFS1	11.46						
WVFS2	11.46						
WVFS3	11.46						
WVFS4	11.46						
WVFS5	11.46						
WVFS6	11.46						
WVFS7	11.46						
WVFS8	11.46						
WVF5FT	10.46						
CNLSC	6.00						
CNSSC	5.17						
CCL	3.64						
GR	0.90						
PTS275	2.83	2.75					
RBT-Probe (Base)	8.92	2.75	90.00	Probe Radii Bond Tool with Digital Telemetry			
CNT-Probe_B (275)	2.88	2.75	40.00	6 bow centralizer			
GR-Probe (275)	4.33	2.75	30.00	Probe 2.75"			

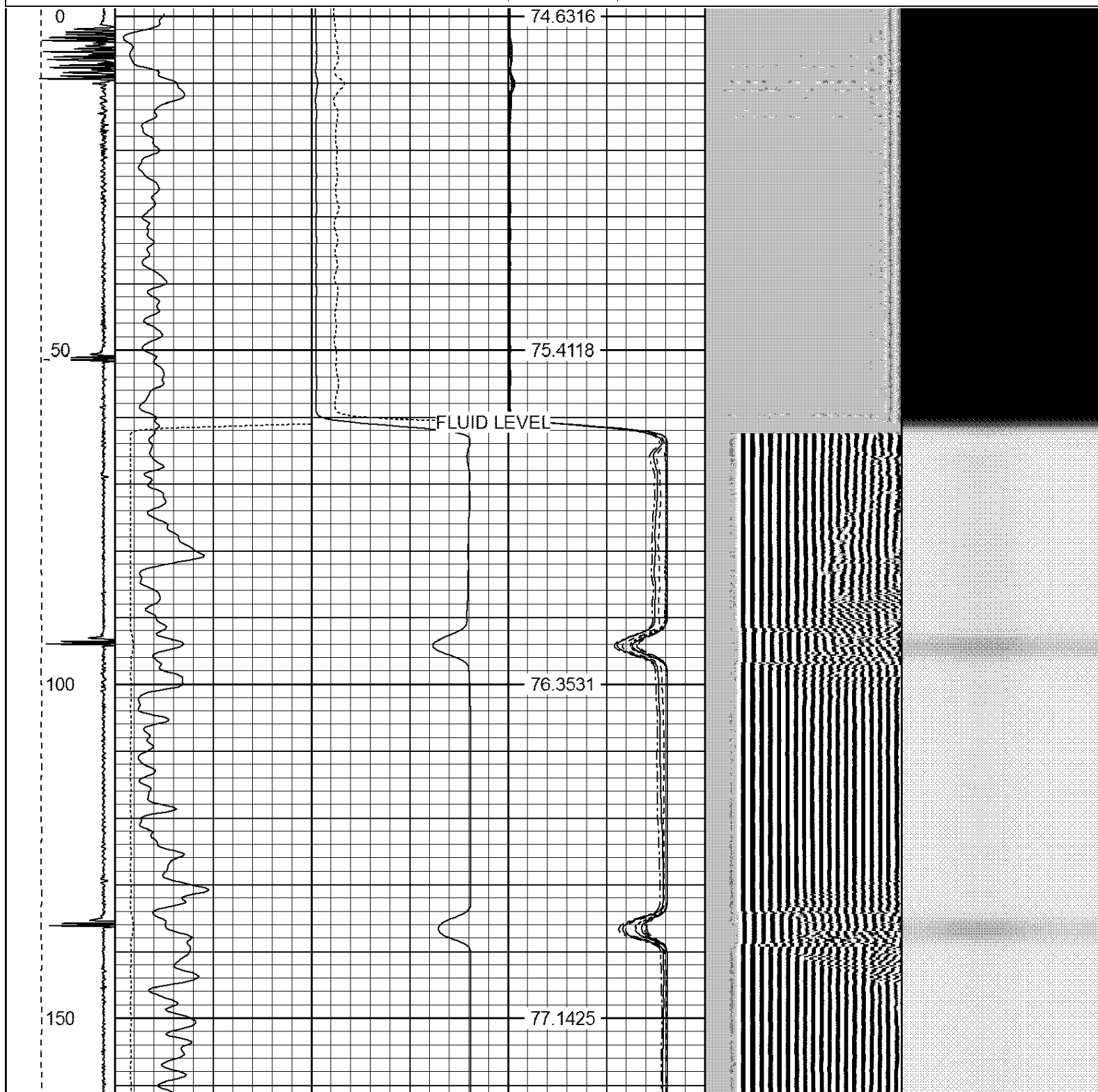
Dataset: psc 15-11.db: field/well/run1/pass2

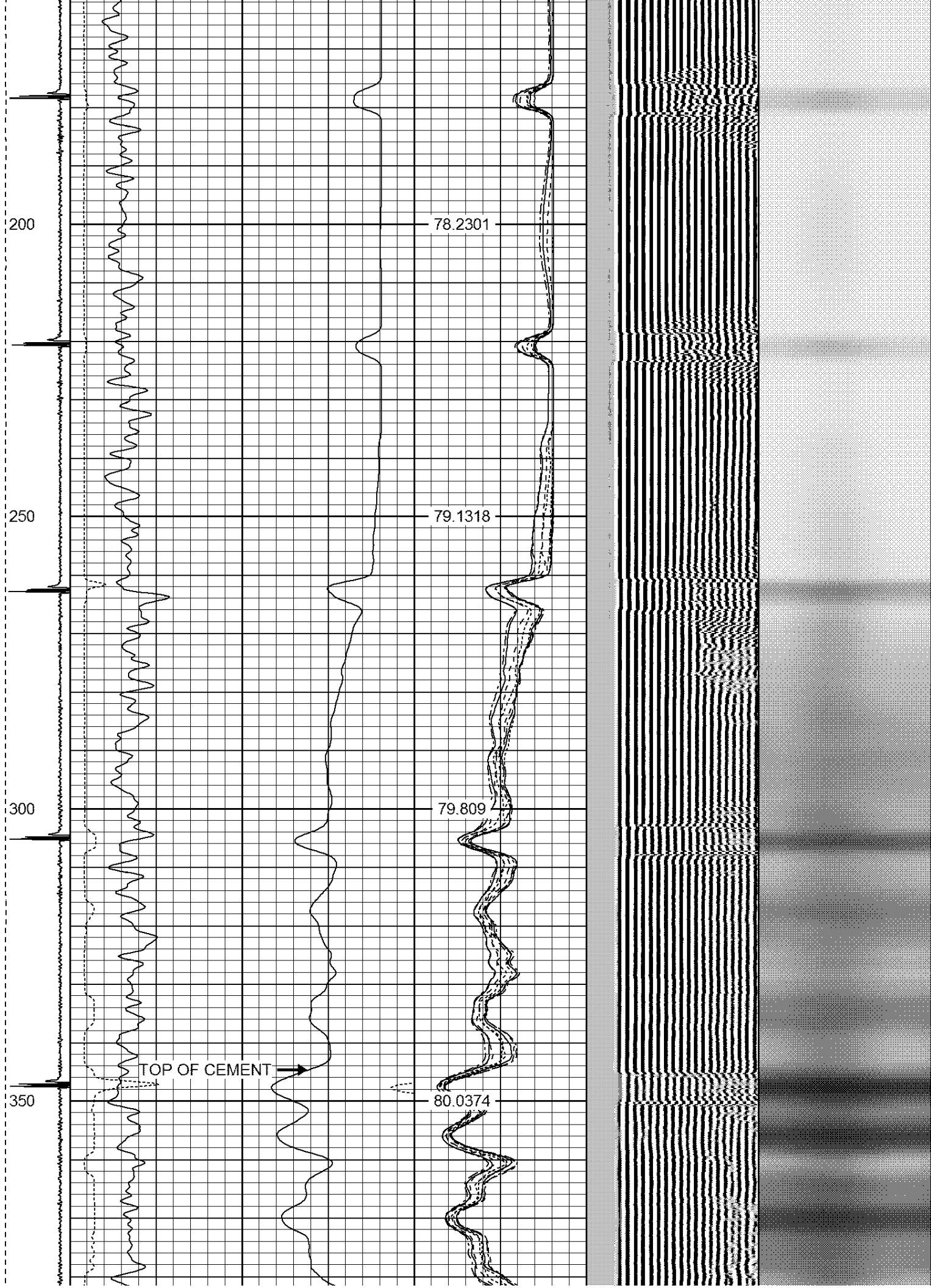
Total Length: 19.96 ft

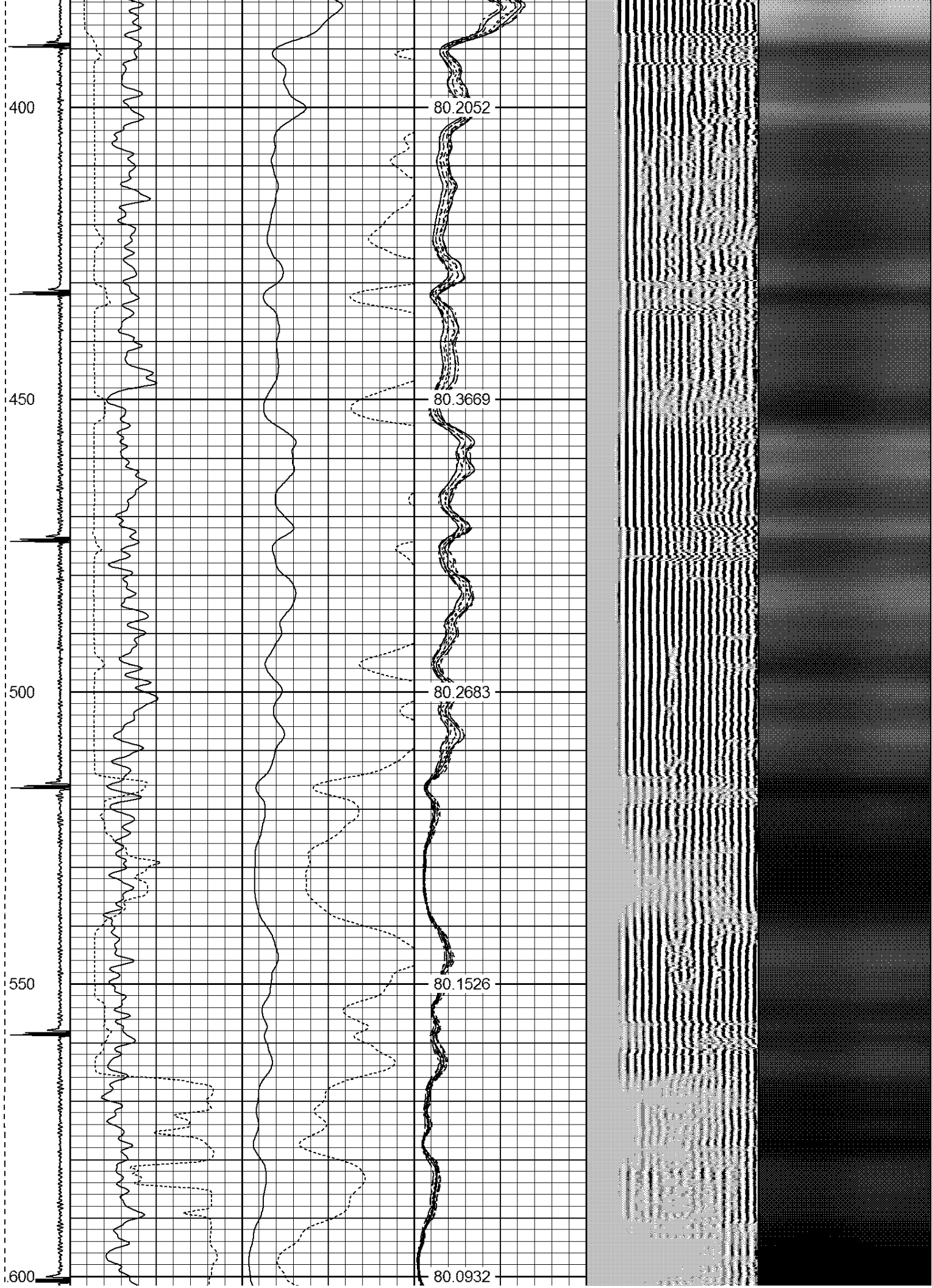
Total Weight: 165.00 lb

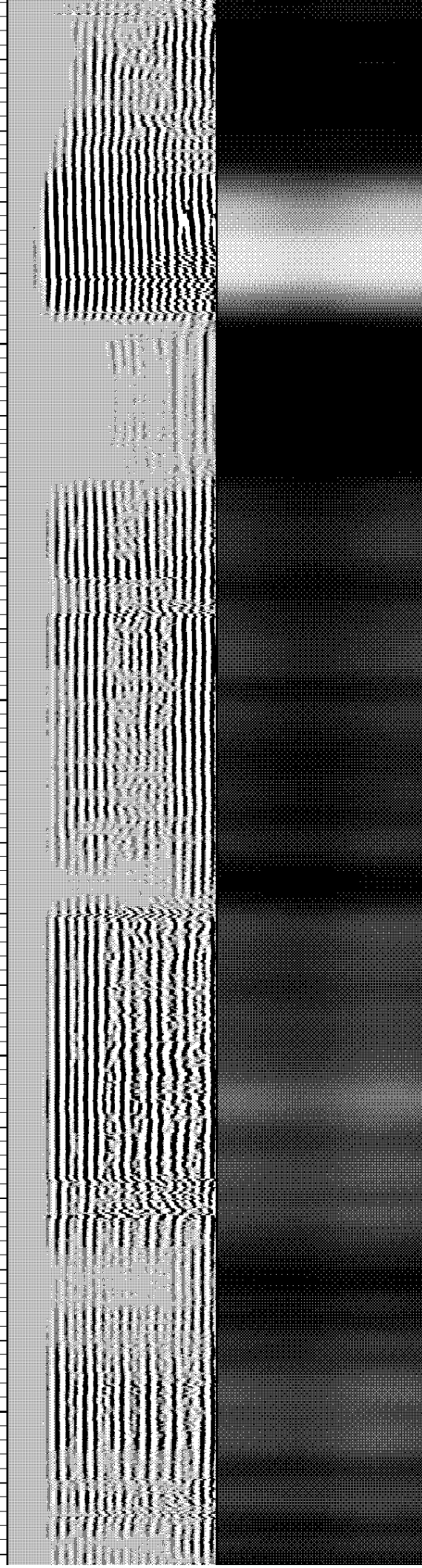
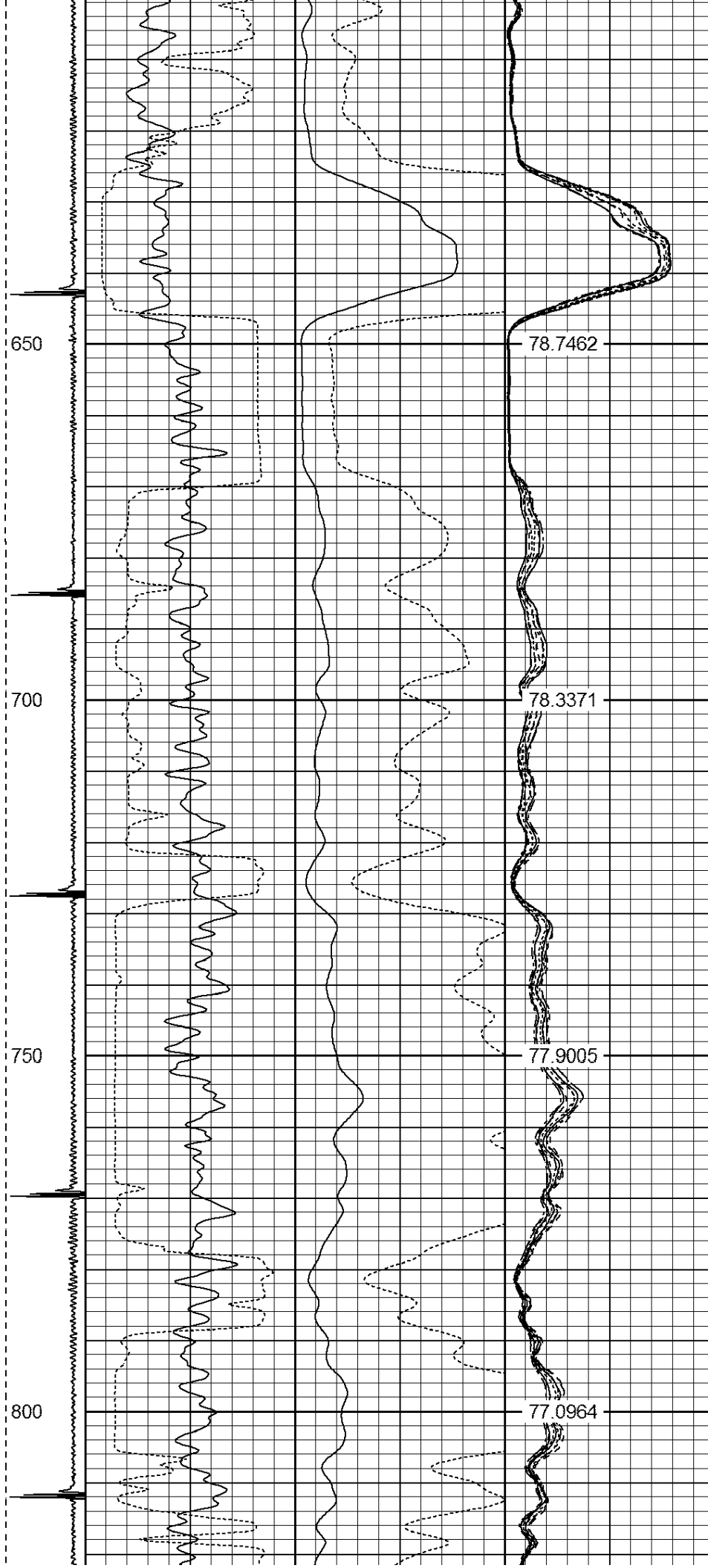
O.D.: 2.75 in

-9	CCL	1	200	TT (usec)	1000	0	AMP (mV)	100	0	AMPS1	100	200	VDL	1200	1	Cement Map	8
	LSPD		0	GR (GAPI)	200	0	AMPx5 (mV)	20	0	AMPS2	100				100		1
	(ft/min)		200	GR (GAPI)	400				0	AMPS3	100						
0	250								0	AMPS4	100						
									0	AMPS5	100						
									0	AMPS6	100						
									0	AMPS7	100						
									0	AMPS8	100						
									IntTemp								
									(degF)								

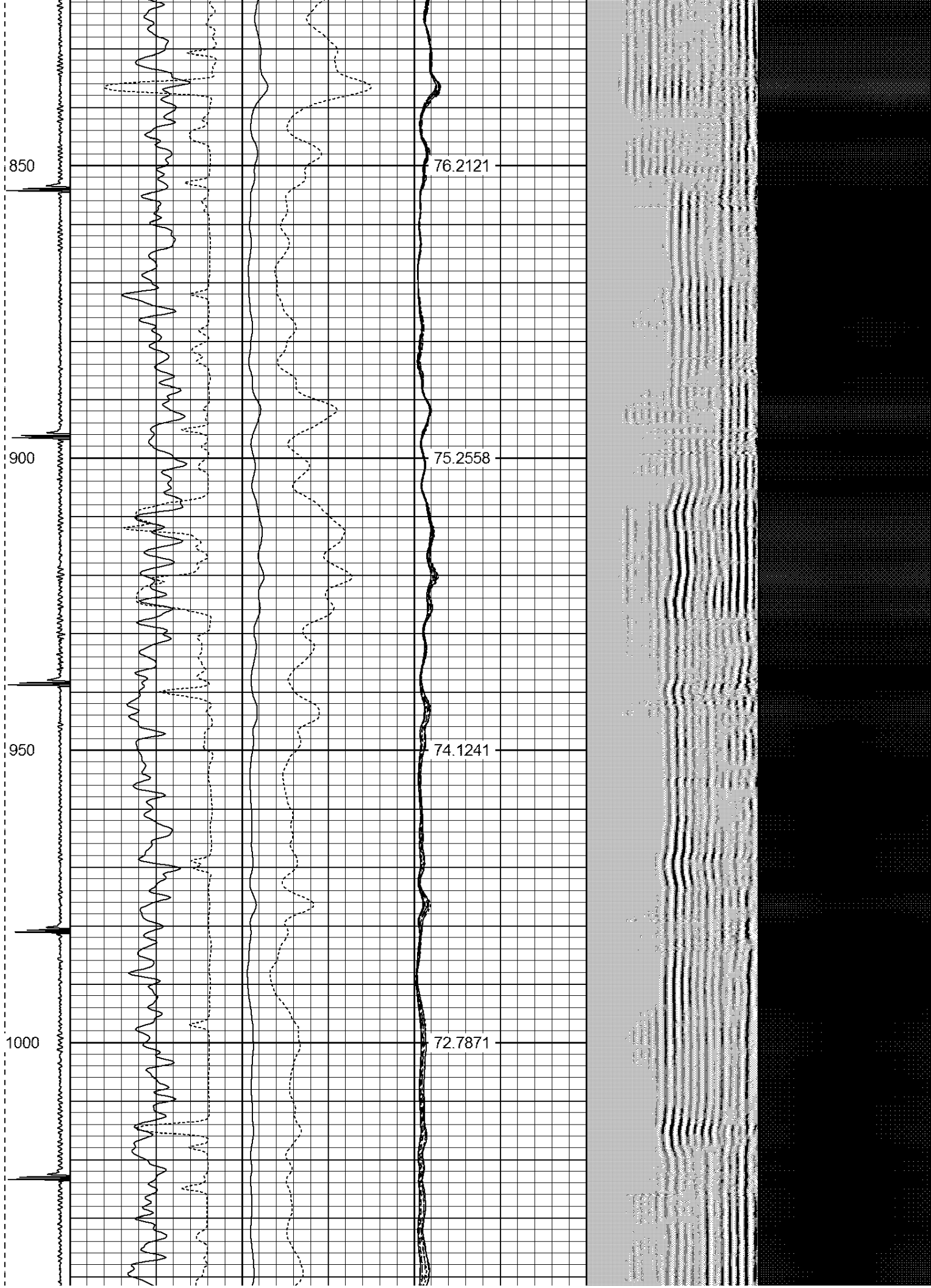


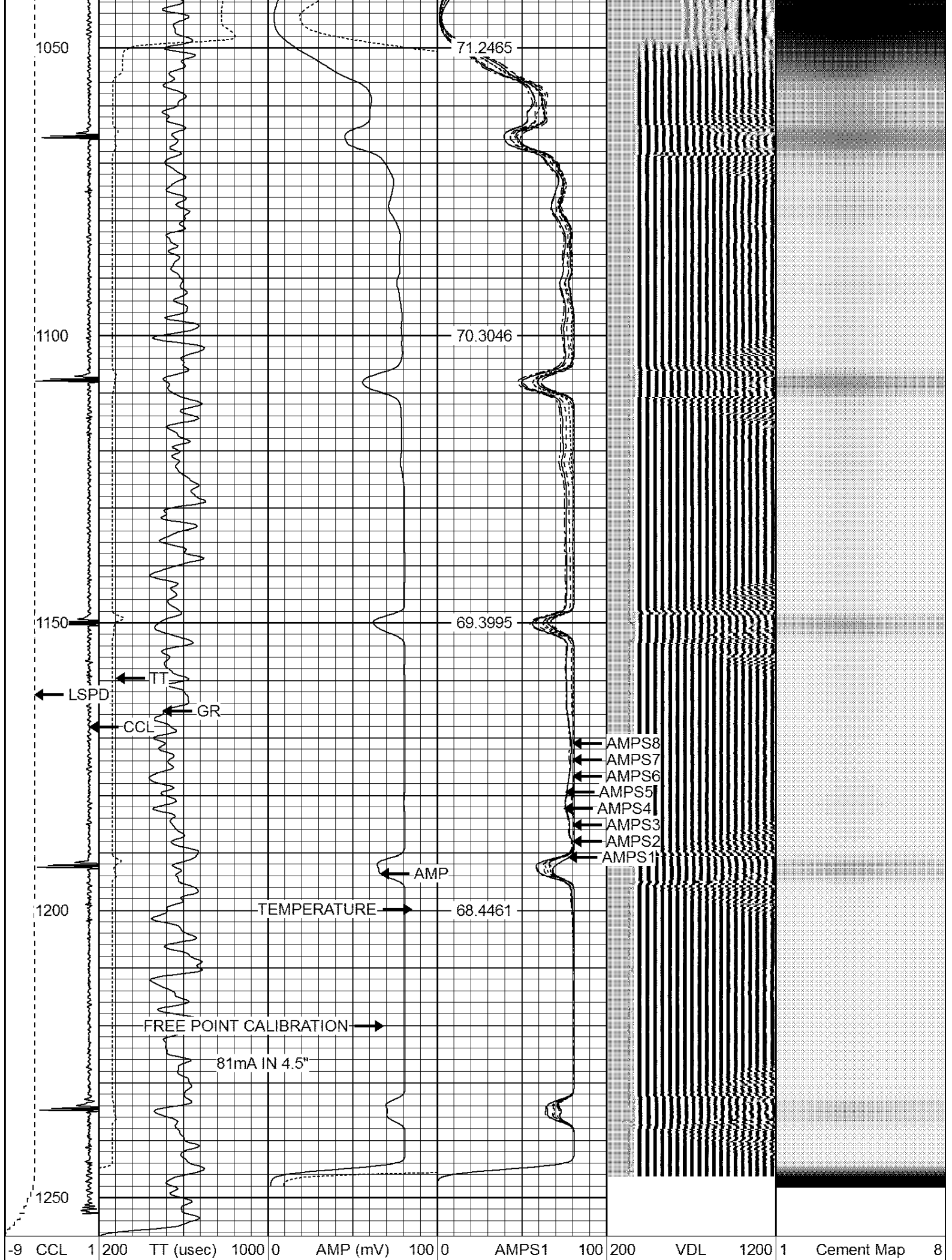














LSPD	0	GR (GAPI)	200	0	AMPx5 (mV)	20	0	AMPS2	100	1
(ft/min)	200	GR (GAPI)	400				0	AMPS3	100	
0	250						0	AMPS4	100	
							0	AMPS5	100	
							0	AMPS6	100	
							0	AMPS7	100	
							0	AMPS8	100	
								IntTemp		
								(degF)		

Calibration Report						
Database File: psc 15-11.db						
Dataset Pathname: pass2						
Dataset Creation: Fri Feb 26 19:11:56 2016 by Log 7.0 B1						
Gamma Ray Calibration Report						
Serial Number: 275						
Tool Model: Probe						
Performed: Tue Sep 23 07:13:12 2014						
Calibrator Value: 100.0 GAPI						
Background Reading: 35.0 cps						
Calibrator Reading: 160.0 cps						
Sensitivity: 1.0000 GAPI/cps						
Compensated Neutron Calibration Report						
Serial Number: 275						
Tool Model: Probe_B						
CALIBRATION Wed Jul 30 08:47:19 2008						
Detector		Readings		Target		Normalization
Short Space		5001.20	cps	0.00	cps	1.0000
Long Space		1029.31	cps	0.00	cps	1.0000
PRE-SURVEY VERIFICATION						
Detector		Readings		Measured		Target
1)	Short Space	cps				
	Long Space	cps		pu		pu
2)	Short Space	cps				
	Long Space	cps		pu		
3)	Short Space	cps				
	Long Space	cps		pu		
POST-SURVEY VERIFICATION						
Detector		Readings		Measured		Target
1)	Short Space	cps				
	Long Space	cps		pu		pu
2)	Short Space	cps				
	Long Space	cps		pu		pu
3)	Short Space	cps				

Segmented Cement Bond Log Calibration Report	
--	--

Serial Number:	Base	
Tool Model:	Probe	
Calibration Casing Diameter:	4.500	in
Calibration Depth:	1256.558	ft

Master Calibration, performed Fri Feb 26 19:11:20 2016:						
	Raw (v)		Calibrated (mv)		Results	
	Zero	Cal	Zero	Cal	Gain	Offset
3'	0.003	2.500	2.000	81.196	31.713	1.915
CAL	1.454	2.500				
5'	0.003	2.500	2.000	81.196	31.712	1.916
SUM						
S1	0.005	2.500	0.500	81.000	32.269	0.328
S2	0.004	2.500	0.500	81.000	32.246	0.385
S3	0.005	2.500	0.500	81.000	32.258	0.354
S4	0.004	2.500	0.500	81.000	32.251	0.372
S5	0.003	2.500	0.500	81.000	32.235	0.412
S6	0.004	2.500	0.500	81.000	32.256	0.359
S7	0.007	2.500	0.500	81.000	32.285	0.286
S8	0.005	2.500	0.500	81.000	32.267	0.331

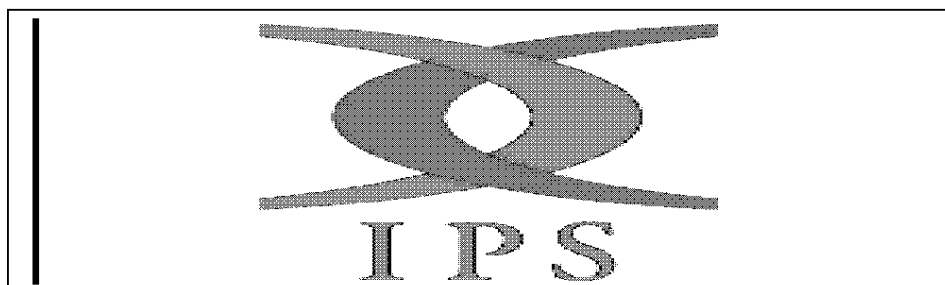
Master Calibration, performed Fri Feb 26 19:11:20 2016:						
	Raw (v)		Calibrated (mv)		Results	
	Zero	Cal	Zero	Cal	Gain	Offset
3'	0.003	2.500	2.000	81.196	31.713	1.915
CAL	1.454	2.500				
5'	0.003	2.500	2.000	81.196	31.712	1.916
SUM						
S1	0.005	2.500	0.500	81.000	32.269	0.328
S2	0.004	2.500	0.500	81.000	32.246	0.385
S3	0.005	2.500	0.500	81.000	32.258	0.354
S4	0.004	2.500	0.500	81.000	32.251	0.372
S5	0.003	2.500	0.500	81.000	32.235	0.412
S6	0.004	2.500	0.500	81.000	32.256	0.359
S7	0.007	2.500	0.500	81.000	32.285	0.286
S8	0.005	2.500	0.500	81.000	32.267	0.331

Internal Reference Calibration, performed Tue Jun 05 07:53:42 2012:						
	Raw (v)		Calibrated (v)		Results	
	Zero	Cal	Zero	Cal	Gain	Offset
CAL	0.000	0.000	1.454	2.500	1.000	0.000

Internal Reference Calibration, performed Tue Jun 05 07:53:42 2012:						
	Raw (v)		Calibrated (v)		Results	
	Zero	Cal	Zero	Cal	Gain	Offset
CAL	0.000	0.000	1.454	2.500	1.000	0.000

Air Zero Calibration, performed Thu Feb 25 21:51:33 2016:			
	Raw (v)	Calibrated (v)	Results
	Zero	Zero	Offset
3'	0.000	0.000	0.000
5'	0.000	0.000	0.000
SUM			
S1	0.000	0.000	0.000
S2	0.000	0.000	0.000
S3	0.000	0.000	0.000
S4	0.000	0.000	0.000
S5	0.000	0.000	0.000
S6	0.000	0.000	0.000
S7	0.000	0.000	0.000
S8	0.000	0.000	0.000

Air Zero Calibration, performed Thu Feb 25 21:51:33 2016:			
	Raw (v)	Calibrated (v)	Results
	Zero	Zero	Offset
3'	0.000	0.000	0.000
5'	0.000	0.000	0.000
SUM			
S1	0.000	0.000	0.000
S2	0.000	0.000	0.000
S3	0.000	0.000	0.000
S4	0.000	0.000	0.000
S5	0.000	0.000	0.000
S6	0.000	0.000	0.000
S7	0.000	0.000	0.000
S8	0.000	0.000	0.000



Company	ANADARKO PETROLEUM CORPORATION
Well	PSC 15-11
Field	WATTENBERG
County	WELD
State	CO