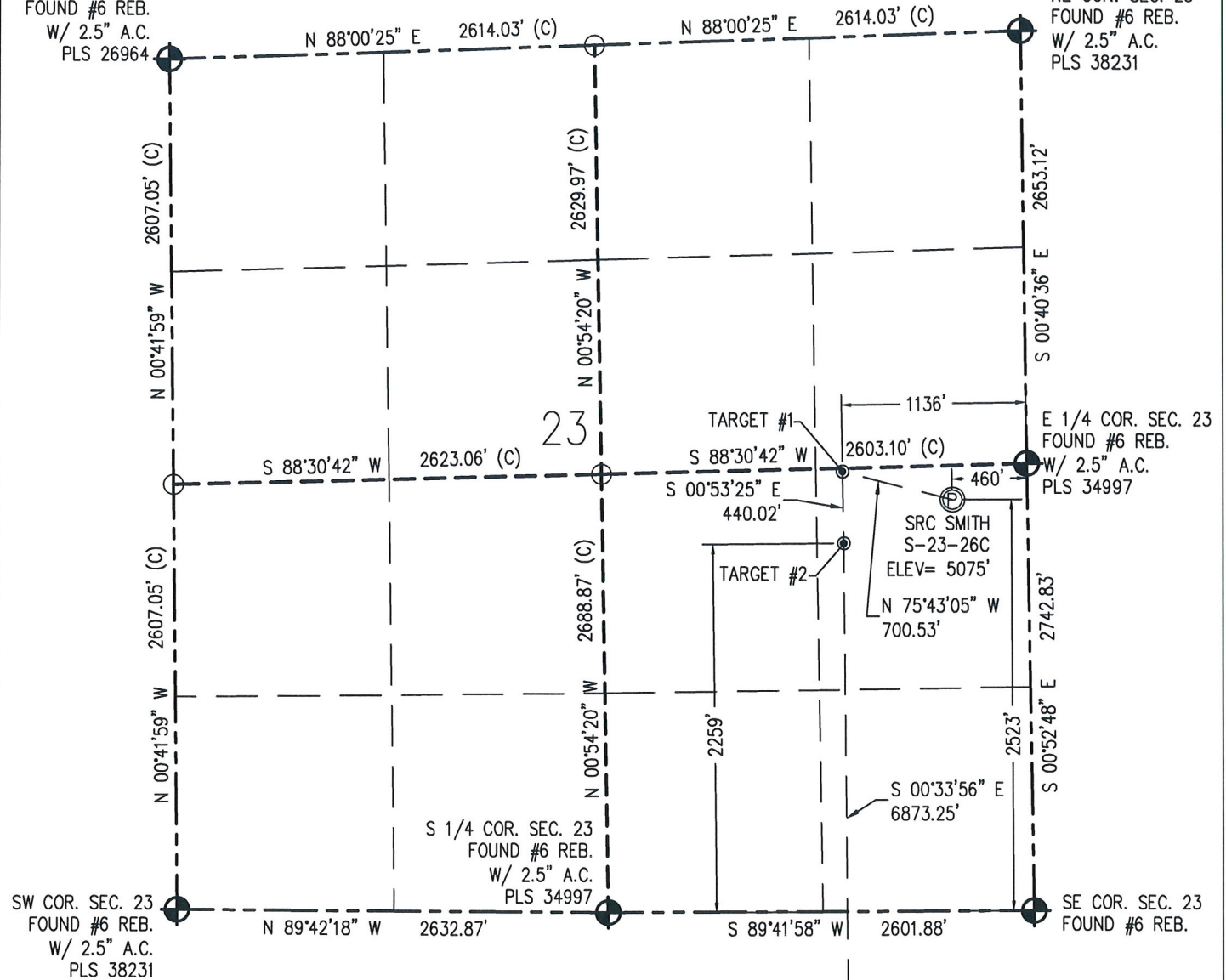


# WELL LOCATION CERTIFICATE

THIS MAP DOES NOT REPRESENT A BOUNDARY SURVEY

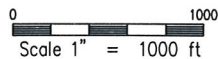
NW COR. SEC. 23  
FOUND #6 REB.  
W/ 2.5" A.C.  
PLS 26964

NE COR. SEC. 23  
FOUND #6 REB.  
W/ 2.5" A.C.  
PLS 38231



**N** IN ACCORDANCE WITH A REQUEST FROM CRAIG RASMUSON - SYNERGY RESOURCES, BASELINE ENGINEERING CORP. HAS DETERMINED THE LOCATION OF THE SRC SMITH S-23-26C TO BE 2523' FSL AND 460' FEL, AS MEASURED AT NINETY (90) DEGREES FROM THE SECTION LINE OF SECTION 23, TOWNSHIP 10 NORTH, RANGE 61 WEST AND THE BOTTOM HOLE LOCATION TO BE 460' FSL AND 1160' FEL OF SECTION 26, TOWNSHIP 10 NORTH, RANGE 61 WEST, 6TH PRINCIPAL MERIDIAN, WELD COUNTY, COLORADO.

I HEREBY CERTIFY THAT THIS WELL LOCATION CERTIFICATE WAS PREPARED BY ME, OR UNDER MY DIRECT SUPERVISION, THAT THE FIELD WORK WAS COMPLETED ON 6/16/2015, THAT IT IS NOT A LAND SURVEY PLAT OR AN IMPROVEMENT SURVEY PLAT, AND THAT IT IS NOT TO BE RELIED UPON FOR ESTABLISHMENT OF FENCE, BUILDING, OR OTHER FUTURE IMPROVEMENT LINES.



**NOTES:**

- 1) NEAREST CULTURAL ITEMS:  
BUILDING: 2510' SW  
BUILDING UNIT: 2746' SW  
HIGH OCCUPANCY BUILDING UNIT: 5280'+  
DESIGNATED OUTSIDE ACTIVITY AREA: 5280'+  
PUBLIC ROAD: WELD COUNTY ROAD 28 449' E  
ABOVE GROUND UTILITY: 491' E  
RAILROAD: 5280'+  
PROPERTY LINE: 210' N
- 2) SURFACE USE: PASTURE.
- 3) OPERATOR NAME: WYATT HALL.
- 4) THE NEAREST EXISTING WELL IS: NONE IN QUARTER SECTION.
- 5) Bearings shown are grid bearings of the Colorado State Plane Coordinate System, North Zone, North American Datum 1983/2007. The lineal dimensions as contained herein are based upon the "U.S. Survey Foot."
- 6) Ground elevations are based on an observed GPS elevation (NAVD 88 DATUM).
- 7) IMPROVEMENTS: See LOCATION DRAWING for all visible improvements within 500' of disturbed area.

**SURFACE HOLE:**  
LATITUDE: 40.819249° N  
LONGITUDE: 104.165619° W  
PDOP: 1.2  
1/4, 1/4: NE1/4SE1/4

**TARGET #1:**  
LATITUDE: 40.819751° N  
LONGITUDE: 104.168061° W

**TARGET #2:**  
LATITUDE: 40.818543° N  
LONGITUDE: 104.168061° W

**BOTTOM HOLE:**  
LATITUDE: 40.799683° N  
LONGITUDE: 104.168188° W

**LEGEND**

- FOUND/SET SURVEY MONUMENT PER MONUMENT RECORD EXCEPTIONS NOTED.
- CALCULATED SURVEY MONUMENT POSITION
- CALCULATED DIMENSION



AARON A. DEMO  
Professional Land Surveyor Registration No. 38285  
State of Colorado  
FOR AND ON BEHALF OF BASELINE ENGINEERING CORP.

Completed  
8/14/2015

# WELL LOCATION CERTIFICATE

THIS MAP DOES NOT REPRESENT A BOUNDARY SURVEY

NW COR. SEC. 26  
FOUND #6 REB.  
W/ 2.5" A.C.  
PLS 38231

N 1/4 COR. SEC. 26  
FOUND #6 REB.  
W/ 2.5" A.C.  
PLS 34997

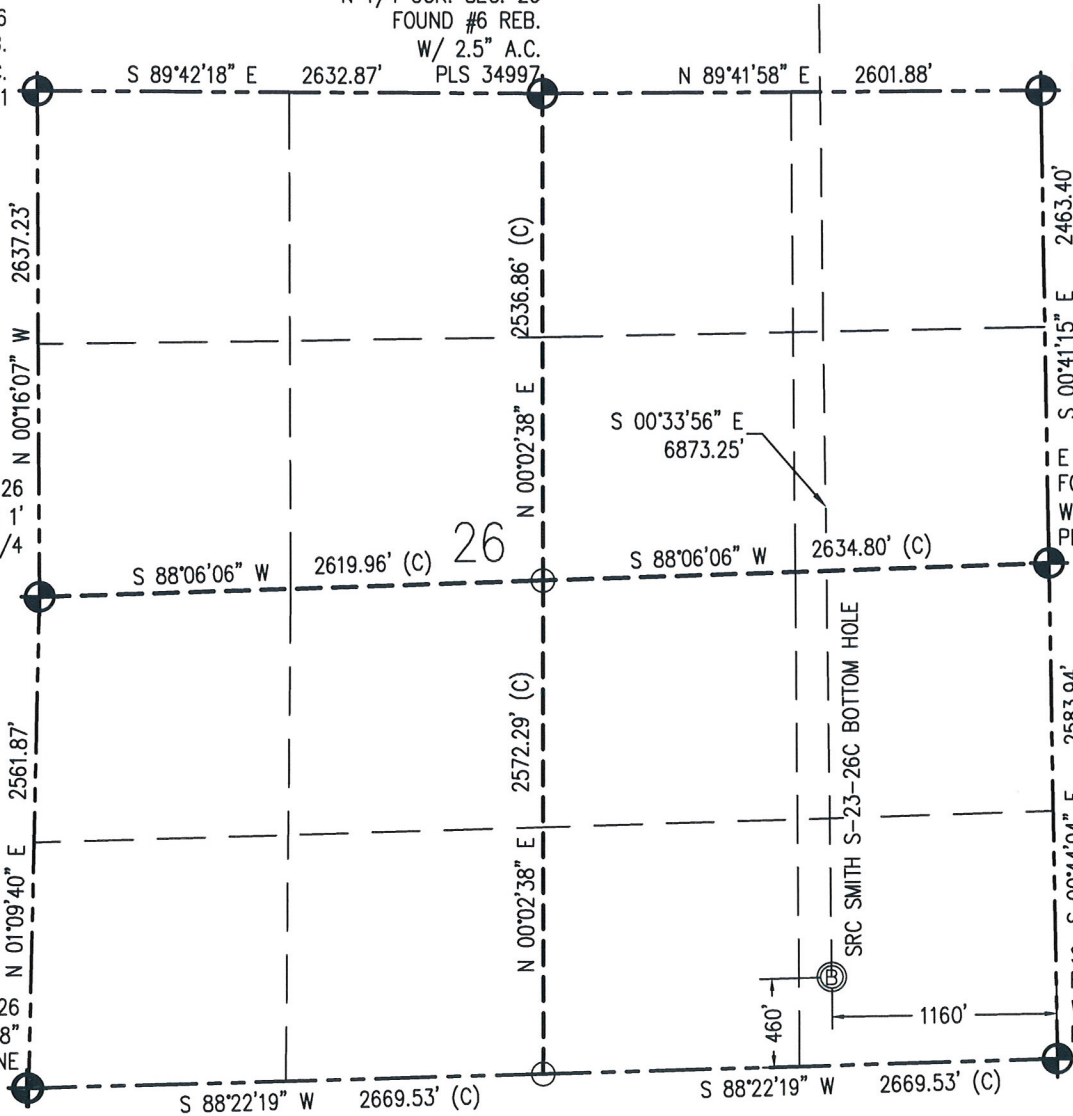
NE COR. SEC. 26  
FOUND #6 REB.

W 1/4 COR. SEC. 26  
FOUND 2' X 1'  
STONE MARKED 1/4

E 1/4 COR. SEC. 26  
FOUND #6 REB.  
W/ 2.5" A.C.  
PLS 38019

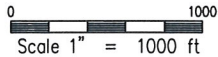
SW COR. SEC. 26  
FOUND 1' X 8"  
STONE

SE COR. SEC. 26  
FOUND #6 REB.  
W/ 2.5" A.C.  
PLS 38019



**N** IN ACCORDANCE WITH A REQUEST FROM CRAIG RASMUSON - SYNERGY RESOURCES, BASELINE ENGINEERING CORP. HAS DETERMINED THE LOCATION OF THE SRC SMITH S-23-26C TO BE 2523' FSL AND 460' FEL, AS MEASURED AT NINETY (90) DEGREES FROM THE SECTION LINE OF SECTION 23, TOWNSHIP 10 NORTH, RANGE 61 WEST AND THE BOTTOM HOLE LOCATION TO BE 460' FSL AND 1160' FEL OF SECTION 26, TOWNSHIP 10 NORTH, RANGE 61 WEST, 6TH PRINCIPAL MERIDIAN, WELD COUNTY, COLORADO.

I HEREBY CERTIFY THAT THIS WELL LOCATION CERTIFICATE WAS PREPARED BY ME, OR UNDER MY DIRECT SUPERVISION, THAT THE FIELD WORK WAS COMPLETED ON 6/16/2015, THAT IT IS NOT A LAND SURVEY PLAT OR AN IMPROVEMENT SURVEY PLAT, AND THAT IT IS NOT TO BE RELIED UPON FOR ESTABLISHMENT OF FENCE, BUILDING, OR OTHER FUTURE IMPROVEMENT LINES.



NOTES:

- 1) NEAREST CULTURAL ITEMS:  
BUILDING: 2510' SW  
BUILDING UNIT: 2746' SW  
HIGH OCCUPANCY BUILDING UNIT: 5280'+  
DESIGNATED OUTSIDE ACTIVITY AREA: 5280'+  
PUBLIC ROAD: WELD COUNTY ROAD 28 449' E  
ABOVE GROUND UTILITY: 491' E  
RAILROAD: 5280'+  
PROPERTY LINE: 210' N
- 2) SURFACE USE: PASTURE.
- 3) OPERATOR NAME: WYATT HALL.
- 4) THE NEAREST EXISTING WELL IS: NONE IN QUARTER SECTION.
- 5) Bearings shown are grid bearings of the Colorado State Plane Coordinate System, North Zone, North American Datum 1983/2007. The lineal dimensions as contained herein are based upon the "U.S. Survey Foot."
- 6) Ground elevations are based on an observed GPS elevation (NAVD 88 DATUM).
- 7) IMPROVEMENTS: See LOCATION DRAWING for all visible improvements within 500' of disturbed area.

**SURFACE HOLE:**  
LATITUDE: 40.819249° N  
LONGITUDE: 104.165619° W  
PDOP: 1.2  
1/4, 1/4: NE1/4SE1/4

**TARGET #1:**  
LATITUDE: 40.819751° N  
LONGITUDE: 104.168061° W

**TARGET #2:**  
LATITUDE: 40.818543° N  
LONGITUDE: 104.168061° W

**BOTTOM HOLE:**  
LATITUDE: 40.799683° N  
LONGITUDE: 104.168188° W

**LEGEND**

- FOUND/SET SURVEY MONUMENT PER MONUMENT RECORD EXCEPTIONS NOTED.
- CALCULATED SURVEY MONUMENT POSITION
- (c) - CALCULATED DIMENSION



AARON A. DEMO Completed  
Professional Land Surveyor Registration No. 38285 8/14/2015  
State of Colorado  
FOR AND ON BEHALF OF BASELINE ENGINEERING CORP.