



7136 South Yale Avenue, Suite 414
Tulsa, Oklahoma 74136-6378

phone 918.925.9739

fax 866.534.4559

WWW.HZMUD.COM/25

Customer Information

Operator: Noble Energy Inc
1625 Broadway
Suite 2200
Denver, Colorado 80202

Geologist: Holly Duncan
Noble Energy Inc.

Mud Logging Details

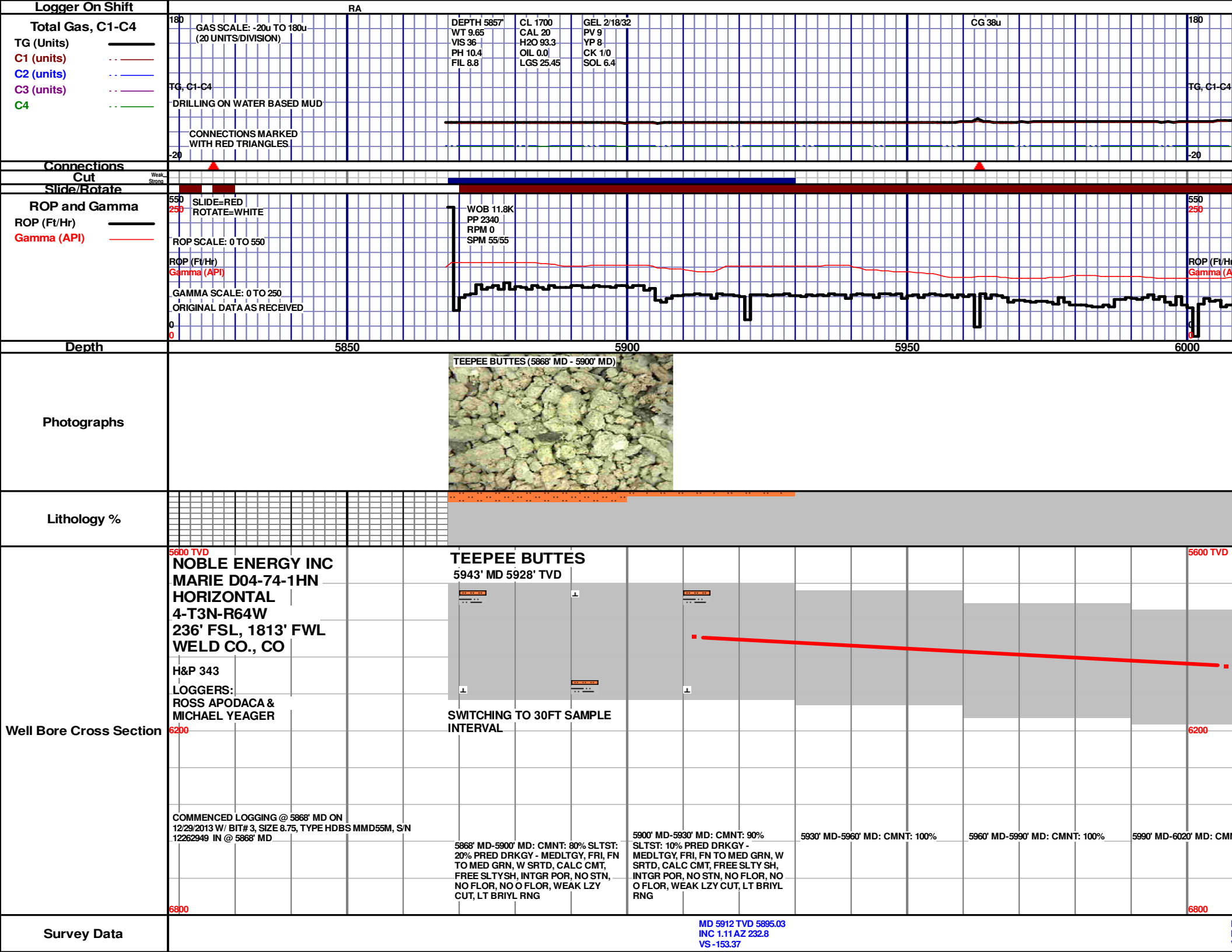
Logger: Ross Apodaca &
Michael Yeager
Log Interval: 5868' MD to 6350' MD
Start Date: December 29, 2013
Release Date: January 5, 2014

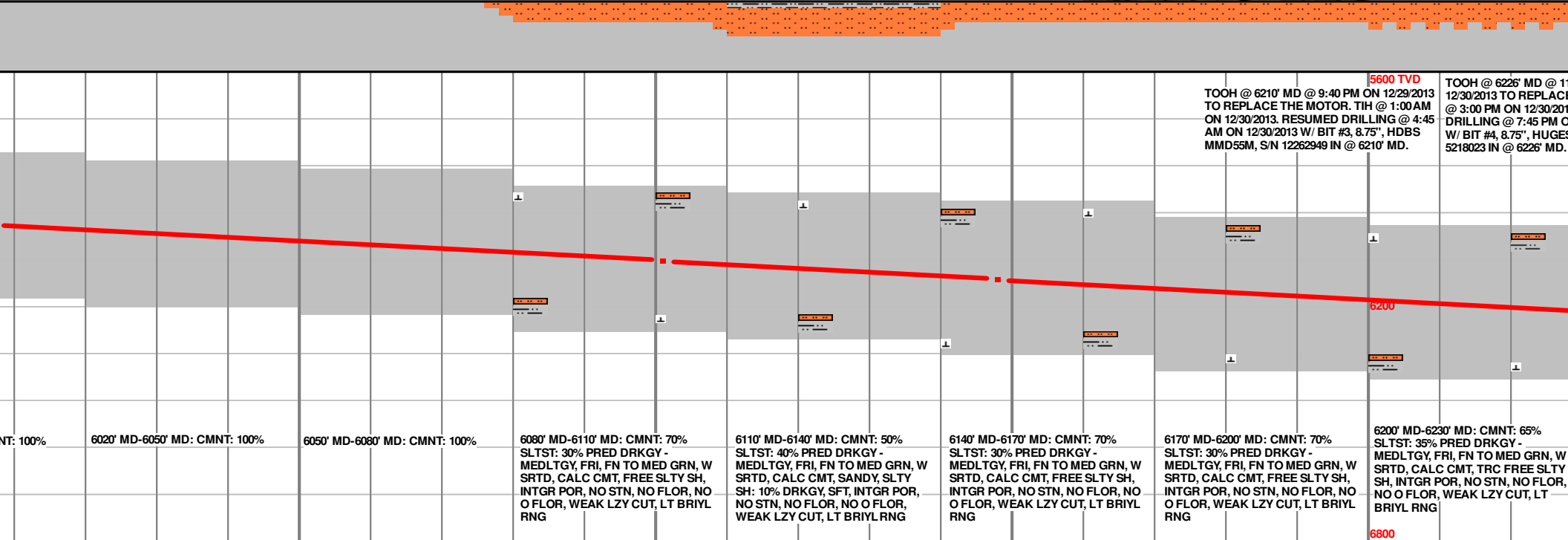
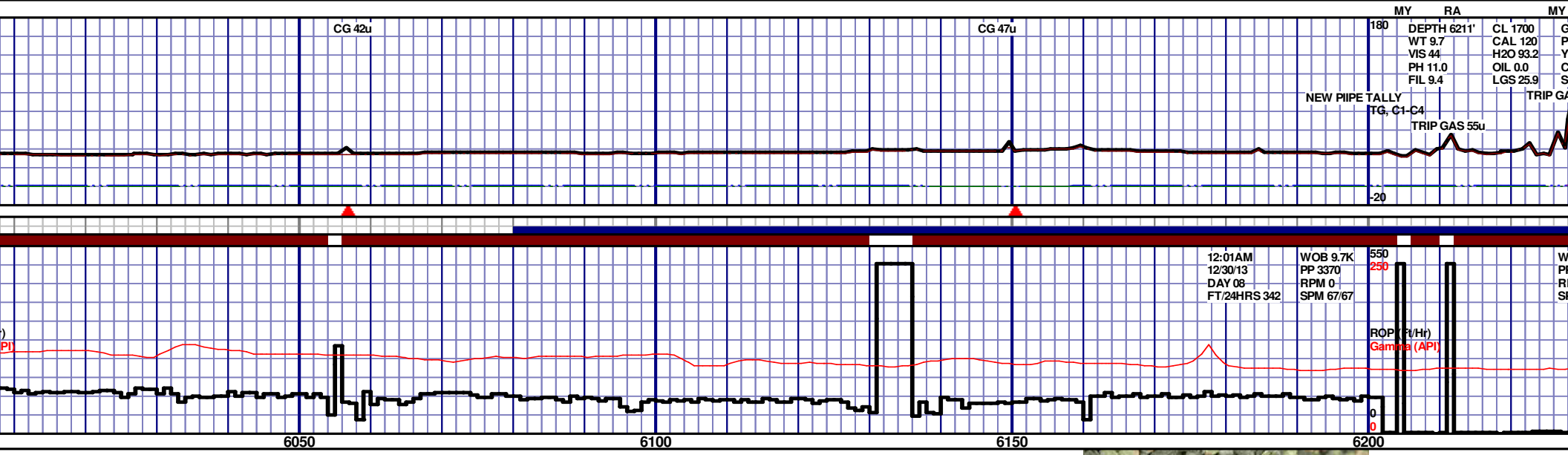
Well Information

Well Name: Marie D04-74-1HN
Horizontal
Location: 4-T3N-R64W
236' FSL, 1813' FWL

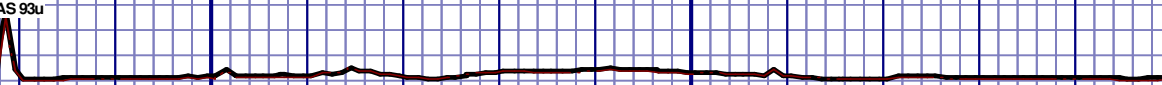
County: Weld
State: Colorado

Drilling Rig: H&P 343
Total Depth: 11217' MD
TD Date: January 5, 2014
Formation: Niobrara C Chalk
KB Elevation: 4744'
GR Elevation: 4720'
API Number: 05-123-38305-0100



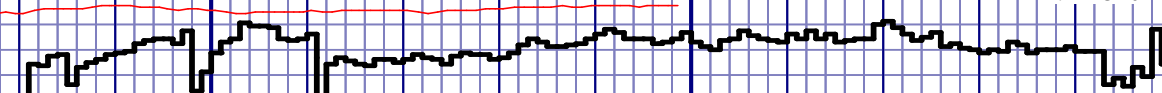


| | |
|-------------|--------|
| GEL 7/32/47 | CG 42u |
| PV 10 | |
| YP 8 | |
| CK 1/0 | |
| SOL 6.9 | |



OB 7.2K
P 3556
PM 0
PM 67/67

WOB 26.6K
PP 3861
RPM 0
SPM 6/67
12:01AM
12/31/13
DAY 09
FT/24HRS 140



6250

6300

6350

64

1:00 AM ON
THE BIT. TIH
3. RESUMED
ON 12/30/2013
SGT-1, S/N

TOOH @ 6350' MD @ 12:15 AM ON 12/31/2013 TO
CEMENT A NEW PLUG.

END OF HORIZONTAL LOG
@ 6350' MD AT 12:15 AM ON
12/31/13. CEMENTED BACK
TO 5641' MD TO START
MARIE D04-74-1HN HZ ST1

6230' MD-6260' MD: CMNT: 90%
SLTST: 10% PRED DRKGY -
MEDLTGY, FRI, FN TO MED GRN, W
SRTD, CALC CMT, TRC FREE SLTY
SH, INTGR POR, NO STN, NO FLOR,
NO O FLOR, WEAK LZY CUT, LT
BRILY RNG

6260' MD-6290' MD: CMNT: 90%
SLTST: 10% PRED DRKG -
MEDLTGY, FRI, FN TO MED GRN, W
SRTD, CALC CMT, TRC FREE SLTY
SH, INTGR POR, NO STN, NO FLOR,
NO O FLOR, WEAK LZY CUT, LT
BRILL RNG

6290' MD-6320' MD: CMNT: 90%
SLTST: 10% PRED DRKGY -
MEDLTGY, FRI, FN TO MED GRN, W
SRTD, CALC CMT, TRC FREE SLTY
SH, INTGR POR, NO STN, NO FLOR,
NO O FLOR, WEAK LZY CUT, LT
BRIYL RNG

6320' MD-6350' MD: CMNT: 80%
SLTST: 20% PRED DRKGY -
MEDLTGY, FRI, FN TO MED GRN, W
SRTD, CALC CMT, TRC FREE SLTY
SH, INTRGR POR, NO STN, NO FLOR,
NO O FLOR, WEAK LZY CUT, LT
BRILL RNG

MD 6290 TVD 6273.01
INC 0.51 AZ 358.97
VS -155.73