



Project: Weld County, CO NAD 83  
Site: Anschutz Equus Farms 4-62-9\_10 CW2 Pad  
Well: Anschutz Equus Farms 4-62-9-3340B2  
Wellbore: OH  
Design: Plan 2

Plan: Plan 2 (Anschutz Equus Farms 4-62-9-3340B2/OH)  
Created By: Seth Burstad Date: 2-4-2016



**T M**  
Azimuths to True North  
Magnetic North: 8.27°  
  
Magnetic Field  
Strength: 52611.2snT  
Dip Angle: 66.98°  
Date: 10/27/2015  
Model: BGGM2015

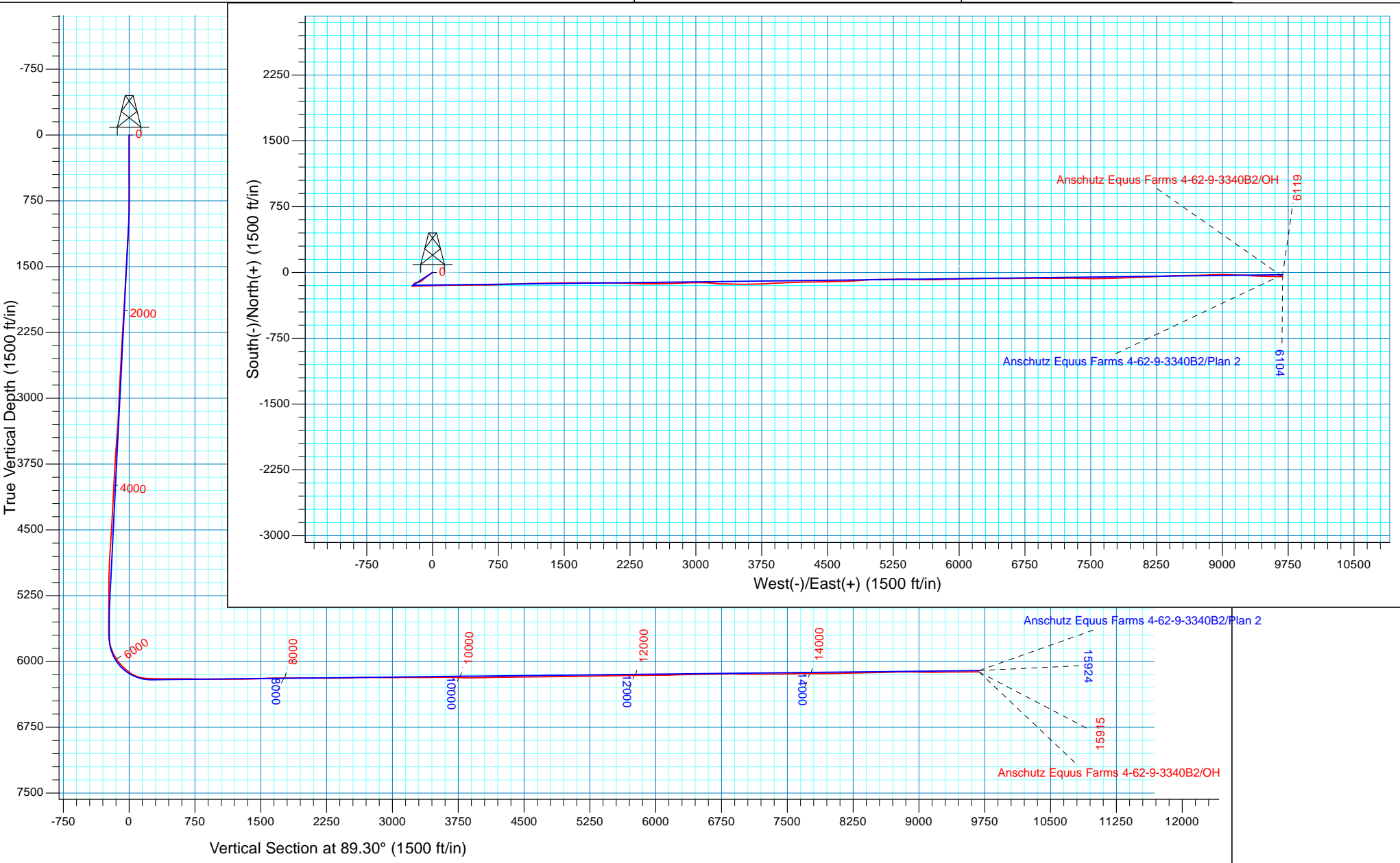
WELL DETAILS: Anschutz Equus Farms 4-62-9-3340B2

PROJECT DETAILS: Weld County, CO NAD 83

Geodetic System: US State Plane 1983  
Datum: North American Datum 1983  
Ellipsoid: GRS 1980  
Zone: Colorado Northern Zone

System Datum: Mean Sea Level  
Local North: True

GL 4528' & KB 16' @ 4544.00ft 4528.00  
Northing 1363670.94 Easting 3323829.01 Latitude 40° 19' 33.081 N Longitude 104° 20' 18.668 W





**Bill Barrett Corporation**

## **Bill Barrett Corp.**

Weld County, CO NAD 83

Anschutz Equus Farms 4-62-9\_10 CW2 Pad

Anschutz Equus Farms 4-62-9-3340B2

OH

Design: OH

## **Standard Survey Report**

10 February, 2016



**Scientific Drilling**

[www.scientificdrilling.com](http://www.scientificdrilling.com)



<b>Company:</b>	Bill Barrett Corp.	<b>Local Co-ordinate Reference:</b>	Well Anschutz Equus Farms 4-62-9-3340B2
<b>Project:</b>	Weld County, CO NAD 83	<b>TVD Reference:</b>	GL 4528' & KB 16' @ 4544.00ft
<b>Site:</b>	Anschutz Equus Farms 4-62-9_10 CW2 Pad	<b>MD Reference:</b>	GL 4528' & KB 16' @ 4544.00ft
<b>Well:</b>	Anschutz Equus Farms 4-62-9-3340B2	<b>North Reference:</b>	True
<b>Wellbore:</b>	OH	<b>Survey Calculation Method:</b>	Minimum Curvature
<b>Design:</b>	OH	<b>Database:</b>	Casper District

<b>Project</b>	Weld County, CO NAD 83		
<b>Map System:</b>	US State Plane 1983	<b>System Datum:</b>	Mean Sea Level
<b>Geo Datum:</b>	North American Datum 1983		
<b>Map Zone:</b>	Colorado Northern Zone		

<b>Site</b>	Anschutz Equus Farms 4-62-9_10 CW2 Pad, Site Center : 4-62-9-3340D2		
<b>Site Position:</b>		<b>Northing:</b>	1,363,655.71 usft
<b>From:</b>	Lat/Long	<b>Easting:</b>	3,323,830.61 usft
<b>Position Uncertainty:</b>	0.00 ft	<b>Slot Radius:</b>	13.200 in
		<b>Latitude:</b>	40° 19' 32.930 N
		<b>Longitude:</b>	104° 20' 18.650 W
		<b>Grid Convergence:</b>	0.75 °

<b>Well</b>	Anschutz Equus Farms 4-62-9-3340B2, 2330' FSL 250' FWL Sec 9 T4N R62W		
<b>Well Position</b>	<b>+N/-S</b>	0.00 ft	<b>Northing:</b> 1,363,670.95 usft
	<b>+E/-W</b>	0.00 ft	<b>Easting:</b> 3,323,829.02 usft
<b>Position Uncertainty</b>	0.00 ft	<b>Wellhead Elevation:</b>	0.00 ft
		<b>Latitude:</b>	40° 19' 33.081 N
		<b>Longitude:</b>	104° 20' 18.668 W
		<b>Ground Level:</b>	4,528.00 ft

<b>Wellbore</b>	OH				
<b>Magnetics</b>	<b>Model Name</b>	<b>Sample Date</b>	<b>Declination (°)</b>	<b>Dip Angle (°)</b>	<b>Field Strength (nT)</b>
	BGGM2015	10/27/2015	8.27	66.98	52,611

<b>Design</b>	OH				
<b>Audit Notes:</b>					
<b>Version:</b>	1.0	<b>Phase:</b>	ACTUAL	<b>Tie On Depth:</b>	0.00
<b>Vertical Section:</b>	<b>Depth From (TVD) (ft)</b>	<b>+N/-S (ft)</b>	<b>+E/-W (ft)</b>	<b>Direction (°)</b>	
	0.00	0.00	0.00	89.30	

<b>Survey Program</b>	<b>Date</b>	2/10/2016			
<b>From (ft)</b>	<b>To (ft)</b>	<b>Survey (Wellbore)</b>	<b>Tool Name</b>	<b>Description</b>	
800.00	6,459.00	Survey #1 - Vertical / Curve (OH)	SDI MWD	SDI MWD - Standard ver 1.0.1	
6,590.00	15,915.00	Survey #2 - Lateral (OH)	SDI MWD	SDI MWD - Standard ver 1.0.1	

<b>Survey</b>										
<b>Measured Depth (ft)</b>	<b>Inclination (°)</b>	<b>Azimuth (°)</b>	<b>Vertical Depth (ft)</b>	<b>+N/-S (ft)</b>	<b>+E/-W (ft)</b>	<b>Vertical Section (ft)</b>	<b>Dogleg Rate (°/100ft)</b>	<b>Build Rate (°/100ft)</b>	<b>Turn Rate (°/100ft)</b>	
800.00	0.00	0.00	800.00	0.00	0.00	0.00	0.00	0.00	0.00	
<b>Casing Assumed Vertical</b>										
885.00	0.62	263.65	885.00	-0.05	-0.46	-0.46	0.73	0.73	0.00	
<b>First SDI MWD Survey</b>										
976.00	1.58	251.35	975.98	-0.51	-2.14	-2.14	1.08	1.05	-13.52	
1,067.00	3.25	242.56	1,066.90	-2.10	-5.61	-5.64	1.87	1.84	-9.66	
1,159.00	4.22	232.98	1,158.70	-5.34	-10.63	-10.70	1.25	1.05	-10.41	
1,251.00	4.66	233.86	1,250.42	-9.58	-16.35	-16.47	0.48	0.48	0.96	
1,342.00	4.40	232.01	1,341.14	-13.91	-22.09	-22.26	0.33	-0.29	-2.03	

<b>Company:</b>	Bill Barrett Corp.	<b>Local Co-ordinate Reference:</b>	Well Anschutz Equus Farms 4-62-9-3340B2
<b>Project:</b>	Weld County, CO NAD 83	<b>TVD Reference:</b>	GL 4528' & KB 16' @ 4544.00ft
<b>Site:</b>	Anschutz Equus Farms 4-62-9_10 CW2 Pad	<b>MD Reference:</b>	GL 4528' & KB 16' @ 4544.00ft
<b>Well:</b>	Anschutz Equus Farms 4-62-9-3340B2	<b>North Reference:</b>	True
<b>Wellbore:</b>	OH	<b>Survey Calculation Method:</b>	Minimum Curvature
<b>Design:</b>	OH	<b>Database:</b>	Casper District

Survey									
Measured Depth (ft)	Inclination (°)	Azimuth (°)	Vertical Depth (ft)	+N/-S (ft)	+E/-W (ft)	Vertical Section (ft)	Dogleg Rate (°/100ft)	Build Rate (°/100ft)	Turn Rate (°/100ft)
1,434.00	4.04	234.21	1,432.89	-17.97	-27.50	-27.72	0.43	-0.39	2.39
1,525.00	3.78	235.62	1,523.68	-21.54	-32.57	-32.83	0.30	-0.29	1.55
1,617.00	3.69	235.35	1,615.48	-24.94	-37.51	-37.81	0.10	-0.10	-0.29
1,708.00	3.61	221.20	1,706.30	-28.76	-41.81	-42.16	0.99	-0.09	-15.55
1,799.00	4.48	236.76	1,797.08	-32.86	-46.67	-47.07	1.53	0.96	17.10
1,891.00	4.48	232.19	1,888.80	-37.04	-52.51	-52.96	0.39	0.00	-4.97
1,982.00	4.57	229.03	1,979.51	-41.59	-58.06	-58.56	0.29	0.10	-3.47
2,074.00	4.04	223.22	2,071.25	-46.36	-63.04	-63.61	0.75	-0.58	-6.32
2,166.00	4.92	237.29	2,162.97	-50.85	-68.58	-69.20	1.52	0.96	15.29
2,257.00	4.48	236.32	2,253.67	-54.93	-74.82	-75.49	0.49	-0.48	-1.07
2,349.00	3.96	231.75	2,345.42	-58.89	-80.31	-81.02	0.67	-0.57	-4.97
2,444.00	3.69	225.77	2,440.21	-63.05	-85.08	-85.84	0.51	-0.28	-6.29
2,538.00	4.40	231.84	2,533.97	-67.39	-90.08	-90.89	0.88	0.76	6.46
2,633.00	3.96	232.98	2,628.72	-71.62	-95.56	-96.43	0.47	-0.46	1.20
2,727.00	4.03	234.41	2,722.49	-75.49	-100.84	-101.76	0.13	0.07	1.52
2,822.00	3.43	232.28	2,817.29	-79.18	-105.80	-106.76	0.65	-0.63	-2.24
2,917.00	2.90	223.40	2,912.14	-82.66	-109.70	-110.70	0.76	-0.56	-9.35
3,011.00	3.34	228.23	3,006.01	-86.21	-113.38	-114.42	0.54	0.47	5.14
3,105.00	3.43	232.80	3,099.84	-89.74	-117.66	-118.75	0.30	0.10	4.86
3,199.00	3.08	221.03	3,193.69	-93.34	-121.56	-122.69	0.80	-0.37	-12.52
3,294.00	3.43	242.03	3,288.54	-96.60	-125.74	-126.91	1.30	0.37	22.11
3,388.00	4.75	241.15	3,382.30	-99.80	-131.64	-132.85	1.41	1.40	-0.94
3,483.00	5.63	245.64	3,476.91	-103.62	-139.33	-140.58	1.02	0.93	4.73
3,577.00	4.75	246.16	3,570.52	-107.09	-147.09	-148.38	0.94	-0.94	0.55
3,671.00	4.22	246.95	3,664.23	-110.02	-153.83	-155.16	0.57	-0.56	0.84
3,766.00	3.61	250.73	3,759.01	-112.37	-159.87	-161.23	0.70	-0.64	3.98
3,860.00	3.08	263.04	3,852.85	-113.66	-165.17	-166.55	0.95	-0.56	13.10
3,955.00	3.34	261.81	3,947.70	-114.36	-170.44	-171.83	0.28	0.27	-1.29
4,050.00	2.99	270.51	4,042.56	-114.73	-175.66	-177.05	0.62	-0.37	9.16
4,144.00	2.73	262.25	4,136.44	-115.01	-180.33	-181.72	0.52	-0.28	-8.79
4,237.00	3.69	247.57	4,229.30	-116.45	-185.29	-186.70	1.35	1.03	-15.78
4,332.00	2.90	249.24	4,324.14	-118.47	-190.36	-191.80	0.84	-0.83	1.76
4,426.00	3.61	252.93	4,417.99	-120.18	-195.42	-196.87	0.79	0.76	3.93
4,520.00	3.69	242.56	4,511.80	-122.45	-200.93	-202.41	0.71	0.09	-11.03
4,615.00	4.84	232.89	4,606.53	-126.27	-206.84	-208.37	1.42	1.21	-10.18
4,709.00	5.28	225.60	4,700.17	-131.69	-213.09	-214.68	0.83	0.47	-7.76
4,803.00	4.48	216.90	4,793.83	-137.65	-218.39	-220.05	1.16	-0.85	-9.26
4,897.00	4.13	214.17	4,887.56	-143.39	-222.49	-224.23	0.43	-0.37	-2.90
4,991.00	2.81	215.58	4,981.39	-148.06	-225.73	-227.52	1.41	-1.40	1.50
5,086.00	2.29	218.92	5,076.29	-151.44	-228.28	-230.11	0.57	-0.55	3.52
5,181.00	0.97	163.37	5,171.26	-153.68	-229.24	-231.10	2.02	-1.39	-58.47
5,275.00	1.23	156.52	5,265.24	-155.37	-228.61	-230.49	0.31	0.28	-7.29
5,370.00	0.53	275.96	5,360.23	-156.26	-228.64	-230.54	1.64	-0.74	125.73

<b>Company:</b>	Bill Barrett Corp.	<b>Local Co-ordinate Reference:</b>	Well Anschutz Equus Farms 4-62-9-3340B2
<b>Project:</b>	Weld County, CO NAD 83	<b>TVD Reference:</b>	GL 4528' & KB 16' @ 4544.00ft
<b>Site:</b>	Anschutz Equus Farms 4-62-9_10 CW2 Pad	<b>MD Reference:</b>	GL 4528' & KB 16' @ 4544.00ft
<b>Well:</b>	Anschutz Equus Farms 4-62-9-3340B2	<b>North Reference:</b>	True
<b>Wellbore:</b>	OH	<b>Survey Calculation Method:</b>	Minimum Curvature
<b>Design:</b>	OH	<b>Database:</b>	Casper District

Survey									
Measured Depth (ft)	Inclination (°)	Azimuth (°)	Vertical Depth (ft)	+N/-S (ft)	+E/-W (ft)	Vertical Section (ft)	Dogleg Rate (°/100ft)	Build Rate (°/100ft)	Turn Rate (°/100ft)
5,464.00	0.97	270.86	5,454.23	-156.20	-229.87	-231.76	0.47	0.47	-5.43
5,558.00	0.35	251.79	5,548.22	-156.28	-230.94	-232.83	0.69	-0.66	-20.29
5,652.00	0.53	277.72	5,642.22	-156.31	-231.64	-233.54	0.28	0.19	27.59
5,746.00	4.57	90.07	5,736.13	-156.26	-228.33	-230.22	5.42	4.30	183.35
5,841.00	16.36	87.79	5,829.38	-155.75	-211.11	-213.00	12.42	12.41	-2.40
5,935.00	27.00	89.63	5,916.61	-155.10	-176.45	-178.33	11.34	11.32	1.96
6,030.00	36.76	88.05	5,997.18	-153.99	-126.35	-128.22	10.31	10.27	-1.66
6,124.00	46.08	87.43	6,067.59	-151.51	-64.28	-66.13	9.92	9.91	-0.66
6,218.00	53.82	89.28	6,128.04	-149.51	7.59	5.76	8.37	8.23	1.97
6,312.00	70.35	89.28	6,171.89	-148.47	90.36	88.53	17.59	17.59	0.00
6,406.00	85.30	88.14	6,191.66	-146.38	181.96	180.15	15.95	15.90	-1.21
6,459.00	86.97	88.05	6,195.23	-144.62	234.80	233.02	3.16	3.15	-0.17
<b>Last SDI MWD Curve Survey</b>									
6,590.00	89.34	90.60	6,199.45	-143.08	365.71	363.93	2.66	1.81	1.95
<b>First SDI MWD Lateral Survey</b>									
6,684.00	89.52	89.63	6,200.38	-143.27	459.70	457.92	1.05	0.19	-1.03
6,779.00	90.66	89.63	6,200.24	-142.66	554.70	552.91	1.20	1.20	0.00
6,874.00	89.78	89.19	6,199.87	-141.68	649.69	647.91	1.04	-0.93	-0.46
6,968.00	89.78	88.66	6,200.23	-139.91	743.67	741.91	0.56	0.00	-0.56
7,062.00	90.04	86.99	6,200.38	-136.35	837.60	835.87	1.80	0.28	-1.78
7,157.00	88.81	87.52	6,201.33	-131.80	932.49	930.81	1.41	-1.29	0.56
7,251.00	89.60	87.70	6,202.64	-127.88	1,026.39	1,024.75	0.86	0.84	0.19
7,345.00	90.31	89.19	6,202.71	-125.33	1,120.36	1,118.74	1.76	0.76	1.59
7,439.00	89.52	89.45	6,202.85	-124.21	1,214.35	1,212.74	0.88	-0.84	0.28
7,534.00	91.45	89.10	6,202.05	-123.01	1,309.33	1,307.73	2.06	2.03	-0.37
7,628.00	91.63	88.58	6,199.52	-121.11	1,403.28	1,401.69	0.59	0.19	-0.55
7,722.00	92.51	88.14	6,196.12	-118.42	1,497.18	1,495.62	1.05	0.94	-0.47
7,817.00	92.42	90.51	6,192.04	-117.30	1,592.08	1,590.52	2.49	-0.09	2.49
7,911.00	91.36	90.16	6,188.94	-117.85	1,686.02	1,684.46	1.19	-1.13	-0.37
8,005.00	89.43	90.25	6,188.29	-118.19	1,780.02	1,778.44	2.06	-2.05	0.10
8,100.00	90.75	90.86	6,188.14	-119.11	1,875.01	1,873.41	1.53	1.39	0.64
8,194.00	87.49	90.33	6,189.58	-120.08	1,968.98	1,967.36	3.51	-3.47	-0.56
8,288.00	89.96	91.04	6,191.68	-121.21	2,062.94	2,061.31	2.73	2.63	0.76
8,382.00	89.69	89.19	6,191.96	-121.40	2,156.94	2,155.29	1.99	-0.29	-1.97
8,477.00	91.01	92.53	6,191.38	-122.82	2,251.91	2,250.24	3.78	1.39	3.52
8,571.00	91.89	92.36	6,189.00	-126.83	2,345.79	2,344.07	0.95	0.94	-0.18
8,665.00	90.40	90.42	6,187.13	-129.11	2,439.74	2,437.98	2.60	-1.59	-2.06
8,760.00	91.28	89.63	6,185.73	-129.15	2,534.73	2,532.96	1.24	0.93	-0.83
8,853.00	91.10	88.49	6,183.80	-127.62	2,627.69	2,625.94	1.24	-0.19	-1.23
8,948.00	89.69	88.22	6,183.15	-124.90	2,722.65	2,720.92	1.51	-1.48	-0.28
9,042.00	89.78	87.96	6,183.58	-121.76	2,816.59	2,814.90	0.29	0.10	-0.28
9,137.00	89.19	87.59	6,184.43	-118.08	2,911.52	2,909.86	0.73	-0.62	-0.39
9,232.00	90.92	90.51	6,184.34	-116.50	3,006.49	3,004.84	3.57	1.82	3.07
9,325.00	90.13	91.21	6,183.49	-117.90	3,099.48	3,097.80	1.13	-0.85	0.75

<b>Company:</b>	Bill Barrett Corp.	<b>Local Co-ordinate Reference:</b>	Well Anschutz Equus Farms 4-62-9-3340B2
<b>Project:</b>	Weld County, CO NAD 83	<b>TVD Reference:</b>	GL 4528' & KB 16' @ 4544.00ft
<b>Site:</b>	Anschutz Equus Farms 4-62-9_10 CW2 Pad	<b>MD Reference:</b>	GL 4528' & KB 16' @ 4544.00ft
<b>Well:</b>	Anschutz Equus Farms 4-62-9-3340B2	<b>North Reference:</b>	True
<b>Wellbore:</b>	OH	<b>Survey Calculation Method:</b>	Minimum Curvature
<b>Design:</b>	OH	<b>Database:</b>	Casper District

Survey										
Measured Depth (ft)	Inclination (°)	Azimuth (°)	Vertical Depth (ft)	+N/-S (ft)	+E/-W (ft)	Vertical Section (ft)	Dogleg Rate (°/100ft)	Build Rate (°/100ft)	Turn Rate (°/100ft)	
9,420.00	89.87	94.99	6,183.49	-123.03	3,194.32	3,192.58	3.99	-0.27	3.98	
9,514.00	90.13	92.71	6,183.49	-129.35	3,288.10	3,286.28	2.44	0.28	-2.43	
9,609.00	90.57	90.16	6,182.91	-131.72	3,383.06	3,381.20	2.72	0.46	-2.68	
9,703.00	91.19	93.06	6,181.47	-134.36	3,477.00	3,475.10	3.15	0.66	3.09	
9,798.00	89.87	89.02	6,180.59	-136.09	3,571.96	3,570.03	4.47	-1.39	-4.25	
9,892.00	88.90	87.61	6,181.60	-133.32	3,665.91	3,664.01	1.82	-1.03	-1.50	
9,987.00	88.11	87.17	6,184.08	-129.00	3,760.78	3,758.92	0.95	-0.83	-0.46	
10,081.00	88.81	87.35	6,186.60	-124.51	3,854.64	3,852.83	0.77	0.74	0.19	
10,172.00	91.01	87.52	6,186.74	-120.44	3,945.54	3,943.78	2.42	2.42	0.19	
10,264.00	91.10	88.05	6,185.05	-116.88	4,037.46	4,035.73	0.58	0.10	0.58	
10,356.00	91.98	87.70	6,182.58	-113.47	4,129.36	4,127.66	1.03	0.96	-0.38	
10,447.00	90.31	88.75	6,180.76	-110.65	4,220.29	4,218.63	2.17	-1.84	1.15	
10,539.00	91.10	89.02	6,179.63	-108.86	4,312.27	4,310.62	0.91	0.86	0.29	
10,630.00	90.48	88.66	6,178.37	-107.02	4,403.24	4,401.60	0.79	-0.68	-0.40	
10,722.00	90.13	88.58	6,177.88	-104.80	4,495.21	4,493.60	0.39	-0.38	-0.09	
10,813.00	90.92	89.19	6,177.05	-103.03	4,586.19	4,584.59	1.10	0.87	0.67	
10,904.00	90.48	88.84	6,175.94	-101.47	4,677.17	4,675.58	0.62	-0.48	-0.38	
10,996.00	90.66	87.08	6,175.02	-98.20	4,769.10	4,767.55	1.92	0.20	-1.91	
11,087.00	90.84	84.71	6,173.83	-91.68	4,859.85	4,858.37	2.61	0.20	-2.60	
11,179.00	91.54	86.29	6,171.92	-84.47	4,951.55	4,950.15	1.88	0.76	1.72	
11,271.00	91.98	88.84	6,169.09	-80.56	5,043.41	5,042.05	2.81	0.48	2.77	
11,362.00	89.34	89.02	6,168.05	-78.86	5,134.38	5,133.04	2.91	-2.90	0.20	
11,454.00	90.75	89.98	6,167.97	-78.06	5,226.38	5,225.03	1.85	1.53	1.04	
11,545.00	90.22	88.40	6,167.20	-76.77	5,317.36	5,316.03	1.83	-0.58	-1.74	
11,637.00	91.36	92.18	6,165.93	-77.24	5,409.33	5,407.99	4.29	1.24	4.11	
11,728.00	92.07	92.00	6,163.21	-80.55	5,500.23	5,498.84	0.80	0.78	-0.20	
11,819.00	91.45	91.04	6,160.42	-82.97	5,591.15	5,589.72	1.26	-0.68	-1.05	
11,911.00	89.96	88.14	6,159.28	-82.31	5,683.13	5,681.70	3.54	-1.62	-3.15	
12,002.00	89.87	88.58	6,159.42	-79.70	5,774.09	5,772.69	0.49	-0.10	0.48	
12,094.00	89.60	88.66	6,159.84	-77.49	5,866.07	5,864.68	0.31	-0.29	0.09	
12,185.00	91.71	89.02	6,158.80	-75.64	5,957.04	5,955.67	2.35	2.32	0.40	
12,277.00	90.84	88.31	6,156.76	-73.50	6,048.99	6,047.64	1.22	-0.95	-0.77	
12,369.00	90.48	88.66	6,155.70	-71.07	6,140.95	6,139.62	0.55	-0.39	0.38	
12,461.00	91.89	89.54	6,153.79	-69.62	6,232.92	6,231.60	1.81	1.53	0.96	
12,553.00	92.24	89.81	6,150.48	-69.10	6,324.85	6,323.54	0.48	0.38	0.29	
12,644.00	90.40	89.81	6,148.38	-68.80	6,415.83	6,414.51	2.02	-2.02	0.00	
12,736.00	90.66	89.81	6,147.53	-68.50	6,507.82	6,506.50	0.28	0.28	0.00	
12,827.00	91.63	89.45	6,145.71	-67.91	6,598.80	6,597.48	1.14	1.07	-0.40	
12,919.00	90.57	89.72	6,143.95	-67.24	6,690.78	6,689.46	1.19	-1.15	0.29	
13,010.00	91.19	89.37	6,142.55	-66.52	6,781.76	6,780.45	0.78	0.68	-0.38	
13,101.00	90.04	90.16	6,141.57	-66.15	6,872.76	6,871.44	1.53	-1.26	0.87	
13,193.00	89.25	89.98	6,142.14	-66.26	6,964.75	6,963.42	0.88	-0.86	-0.20	
13,284.00	88.99	90.25	6,143.54	-66.44	7,055.74	7,054.40	0.41	-0.29	0.30	

<b>Company:</b>	Bill Barrett Corp.	<b>Local Co-ordinate Reference:</b>	Well Anschutz Equus Farms 4-62-9-3340B2
<b>Project:</b>	Weld County, CO NAD 83	<b>TVD Reference:</b>	GL 4528' & KB 16' @ 4544.00ft
<b>Site:</b>	Anschutz Equus Farms 4-62-9_10 CW2 Pad	<b>MD Reference:</b>	GL 4528' & KB 16' @ 4544.00ft
<b>Well:</b>	Anschutz Equus Farms 4-62-9-3340B2	<b>North Reference:</b>	True
<b>Wellbore:</b>	OH	<b>Survey Calculation Method:</b>	Minimum Curvature
<b>Design:</b>	OH	<b>Database:</b>	Casper District

Survey									
Measured Depth (ft)	Inclination (°)	Azimuth (°)	Vertical Depth (ft)	+N/-S (ft)	+E/-W (ft)	Vertical Section (ft)	Dogleg Rate (°/100ft)	Build Rate (°/100ft)	Turn Rate (°/100ft)
13,376.00	89.43	89.63	6,144.81	-66.35	7,147.73	7,146.39	0.83	0.48	-0.67
13,467.00	90.57	88.93	6,144.81	-65.20	7,238.72	7,237.39	1.47	1.25	-0.77
13,559.00	90.97	92.54	6,143.57	-66.38	7,330.69	7,329.33	3.95	0.43	3.92
13,650.00	89.78	90.77	6,142.98	-69.01	7,421.65	7,420.25	2.34	-1.31	-1.95
13,742.00	91.19	90.07	6,142.20	-69.68	7,513.64	7,512.23	1.71	1.53	-0.76
13,834.00	91.80	89.63	6,139.80	-69.44	7,605.61	7,604.19	0.82	0.66	-0.48
13,925.00	88.99	88.84	6,139.17	-68.23	7,696.59	7,695.18	3.21	-3.09	-0.87
14,017.00	89.87	86.73	6,140.09	-64.67	7,788.51	7,787.14	2.48	0.96	-2.29
14,108.00	91.19	88.93	6,139.24	-61.23	7,879.43	7,878.09	2.82	1.45	2.42
14,200.00	90.13	86.82	6,138.18	-57.82	7,971.35	7,970.05	2.57	-1.15	-2.29
14,291.00	91.71	88.49	6,136.72	-54.09	8,062.26	8,061.00	2.53	1.74	1.84
14,383.00	91.36	88.05	6,134.26	-51.32	8,154.19	8,152.95	0.61	-0.38	-0.48
14,474.00	90.75	85.41	6,132.58	-46.13	8,245.01	8,243.83	2.98	-0.67	-2.90
14,565.00	91.54	87.17	6,130.76	-40.24	8,335.80	8,334.69	2.12	0.87	1.93
14,657.00	91.54	88.22	6,128.29	-36.54	8,427.69	8,426.62	1.14	0.00	1.14
14,749.00	91.10	89.45	6,126.17	-34.67	8,519.65	8,518.59	1.42	-0.48	1.34
14,840.00	91.36	89.28	6,124.22	-33.66	8,610.62	8,609.56	0.34	0.29	-0.19
14,932.00	91.54	88.31	6,121.89	-31.73	8,702.57	8,701.53	1.07	0.20	-1.05
15,024.00	91.10	89.89	6,119.77	-30.29	8,794.53	8,793.50	1.78	-0.48	1.72
15,115.00	89.43	86.47	6,119.35	-27.40	8,885.47	8,884.47	4.18	-1.84	-3.76
15,206.00	88.64	89.37	6,120.88	-24.09	8,976.38	8,975.42	3.30	-0.87	3.19
15,298.00	88.90	91.04	6,122.86	-24.42	9,068.36	9,067.38	1.84	0.28	1.82
15,393.00	91.19	92.27	6,122.78	-27.17	9,163.31	9,162.29	2.74	2.41	1.29
15,487.00	90.92	94.82	6,121.05	-32.98	9,257.11	9,256.01	2.73	-0.29	2.71
15,582.00	89.78	92.79	6,120.47	-39.28	9,351.89	9,350.71	2.45	-1.20	-2.14
15,676.00	90.92	91.39	6,119.90	-42.71	9,445.82	9,444.59	1.92	1.21	-1.49
15,771.00	90.40	90.95	6,118.80	-44.65	9,540.79	9,539.54	0.72	-0.55	-0.46
15,858.00	89.50	90.22	6,118.88	-45.54	9,627.79	9,626.51	1.33	-1.03	-0.84
Last SDI MWD Survey									
15,915.00	89.50	90.22	6,119.38	-45.75	9,684.78	9,683.50	0.00	0.00	0.00
Projection to TD									

Design Annotations				
Measured Depth (ft)	Vertical Depth (ft)	Local Coordinates		Comment
		+N/-S (ft)	+E/-W (ft)	
800.00	800.00	0.00	0.00	Casing Assumed Vertical
885.00	885.00	-0.05	-0.46	First SDI MWD Survey
6,459.00	6,195.23	-144.62	234.80	Last SDI MWD Curve Survey
6,590.00	6,199.45	-143.08	365.71	First SDI MWD Lateral Survey
15,858.00	6,118.88	-45.54	9,627.79	Last SDI MWD Survey
15,915.00	6,119.38	-45.75	9,684.78	Projection to TD

<b>Company:</b>	Bill Barrett Corp.	<b>Local Co-ordinate Reference:</b>	Well Anschutz Equus Farms 4-62-9-3340B2
<b>Project:</b>	Weld County, CO NAD 83	<b>TVD Reference:</b>	GL 4528' & KB 16' @ 4544.00ft
<b>Site:</b>	Anschutz Equus Farms 4-62-9_10 CW2 Pad	<b>MD Reference:</b>	GL 4528' & KB 16' @ 4544.00ft
<b>Well:</b>	Anschutz Equus Farms 4-62-9-3340B2	<b>North Reference:</b>	True
<b>Wellbore:</b>	OH	<b>Survey Calculation Method:</b>	Minimum Curvature
<b>Design:</b>	OH	<b>Database:</b>	Casper District

Checked By: _____	Approved By: _____	Date: _____
-------------------	--------------------	-------------