



PROJECT DETAILS: Weld County, CO NAD 83

Geodetic System: US State Plane 1983
Datum: North American Datum 1983
Ellipsoid: GRS 1980
Zone: Colorado Northern Zone
System Datum: Mean Sea Level
Local North: True

Project: Weld County, CO NAD 83
Site: Evans 7-26 Pad
Well: Evans 4N-14C-XR
Wellbore: OH
Design: Plan #1



Azinuths to True North
Magnetic North: 8.48°



Magnetic Field
Strength: 52529.2snT
Dip Angle: 66.93°
Date: 3/9/2016
Model: BGGM2015

SECTION DETAILS

MD	Inc	Azi	TVD	+N/-S	+E/-W	Dleg	TFace	VSect
0.00	0.00	0.00	0.00	0.00	0.00	0.00	0.00	0.00
300.00	0.00	0.00	300.00	0.00	0.00	0.00	0.00	0.00
1619.04	26.38	255.62	1572.93	-74.08	-288.99	2.00	255.62	-21.21
5363.09	26.38	255.62	4927.07	-487.19	-1900.50	0.00	0.00	-139.45
6682.13	0.00	0.00	6200.00	-561.27	-2189.49	2.00	180.00	-160.66
7267.26	0.00	0.00	6785.13	-561.27	-2189.49	0.00	0.00	-160.66
8085.44	90.00	359.90	7306.00	-40.40	-2190.41	11.00	359.90	351.98
20295.31	90.00	359.90	7306.00	12169.45	-2212.03	0.00	0.00	12368.85

DESIGN TARGET DETAILS

Name	TVD	+N/-S	+E/-W	Northing	Easting	Latitude	Longitude	Shape
PBHL	7306.00	12169.45	-2212.03	1391459.66	3207867.04	40.4055570	-104.7535770	Point
- plan hits target center								

WELL DETAILS: Evans 4N-14C-XR

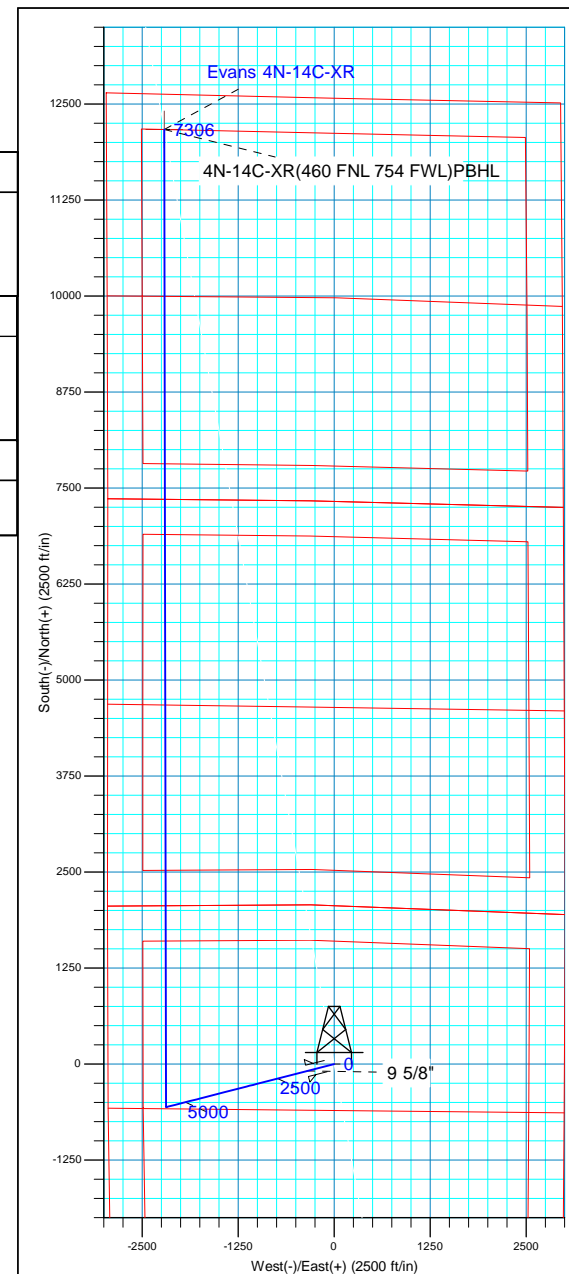
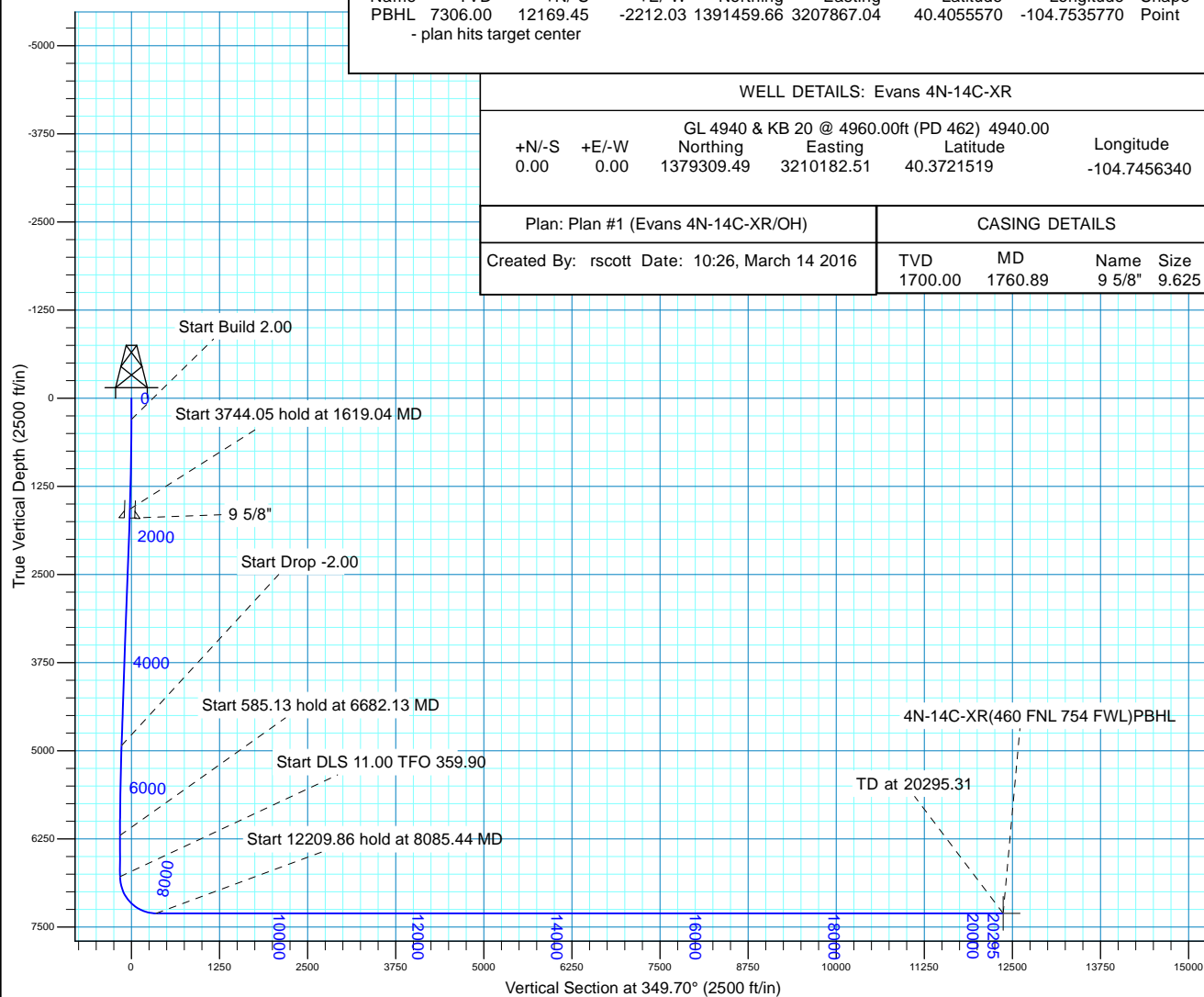
		GL 4940 & KB 20 @ 4960.00ft (PD 462)		4940.00		
+N/-S	+E/-W	Northing	Easting	Latitude	Longitude	
0.00	0.00	1379309.49	3210182.51	40.3721519	-104.7456340	

Plan: Plan #1 (Evans 4N-14C-XR/OH)

CASING DETAILS

Created By: rscott Date: 10:26, March 14 2016

TVD	MD	Name	Size
1700.00	1760.89	9 5/8"	9.625





Synergy Resources Corp.

Weld County, CO NAD 83

Evans 7-26 Pad

Evans 4N-14C-XR

OH

Plan: Plan #1

Standard Planning Report

14 March, 2016



Database:	Casper District	Local Co-ordinate Reference:	Well Evans 4N-14C-XR
Company:	Synergy Resources Corp.	TVD Reference:	GL 4940 & KB 20 @ 4960.00ft (PD 462)
Project:	Weld County, CO NAD 83	MD Reference:	GL 4940 & KB 20 @ 4960.00ft (PD 462)
Site:	Evans 7-26 Pad	North Reference:	True
Well:	Evans 4N-14C-XR	Survey Calculation Method:	Minimum Curvature
Wellbore:	OH		
Design:	Plan #1		

Project	Weld County, CO NAD 83		
Map System:	US State Plane 1983	System Datum:	Mean Sea Level
Geo Datum:	North American Datum 1983		
Map Zone:	Colorado Northern Zone		

Site	Evans 7-26 Pad, SECTION 26 T5N R66W			
Site Position:		Northing:	1,379,289.48 usft	Latitude: 40.3720970
From:	Lat/Long	Easting:	3,210,182.68 usft	Longitude: -104.7456340
Position Uncertainty:	3.28 ft	Slot Radius:	13.200 in	Grid Convergence: 0.49 °

Well	Evans 4N-14C-XR, 2062 FNL 2998 FEL			
Well Position	+N/-S	20.02 ft	Northing:	1,379,309.49 usft
	+E/-W	0.00 ft	Easting:	3,210,182.51 usft
Position Uncertainty		3.28 ft	Wellhead Elevation:	0.00 ft
			Ground Level:	4,940.00 ft

Wellbore	OH				
Magnetics	Model Name	Sample Date	Declination (°)	Dip Angle (°)	Field Strength (nT)
	BGGM2015	3/9/2016	8.48	66.93	52,529

Design	Plan #1			
Audit Notes:				
Version:	Phase:	PLAN	Tie On Depth:	0.00
Vertical Section:	Depth From (TVD) (ft)	+N/-S (ft)	+E/-W (ft)	Direction (°)
	0.00	0.00	0.00	349.70

Plan Sections										
Measured Depth (ft)	Inclination (°)	Azimuth (°)	Vertical Depth (ft)	+N/-S (ft)	+E/-W (ft)	Dogleg Rate (°/100ft)	Build Rate (°/100ft)	Turn Rate (°/100ft)	TFO (°)	Target
0.00	0.00	0.00	0.00	0.00	0.00	0.00	0.00	0.00	0.00	
300.00	0.00	0.00	300.00	0.00	0.00	0.00	0.00	0.00	0.00	
1,619.04	26.38	255.62	1,572.93	-74.08	-288.99	2.00	2.00	0.00	255.62	
5,363.09	26.38	255.62	4,927.08	-487.19	-1,900.50	0.00	0.00	0.00	0.00	
6,682.13	0.00	0.00	6,200.00	-561.27	-2,189.49	2.00	-2.00	0.00	180.00	
7,267.26	0.00	0.00	6,785.13	-561.27	-2,189.49	0.00	0.00	0.00	0.00	
8,085.44	90.00	359.90	7,306.00	-40.40	-2,190.41	11.00	11.00	-0.01	359.90	
20,295.31	90.00	359.90	7,306.00	12,169.45	-2,212.03	0.00	0.00	0.00	0.00	4N-14C-XR(460 FNL)

Database:	Casper District	Local Co-ordinate Reference:	Well Evans 4N-14C-XR
Company:	Synergy Resources Corp.	TVD Reference:	GL 4940 & KB 20 @ 4960.00ft (PD 462)
Project:	Weld County, CO NAD 83	MD Reference:	GL 4940 & KB 20 @ 4960.00ft (PD 462)
Site:	Evans 7-26 Pad	North Reference:	True
Well:	Evans 4N-14C-XR	Survey Calculation Method:	Minimum Curvature
Wellbore:	OH		
Design:	Plan #1		

Planned Survey									
Measured Depth (ft)	Inclination (°)	Azimuth (°)	Vertical Depth (ft)	+N/-S (ft)	+E/-W (ft)	Vertical Section (ft)	Dogleg Rate (°/100ft)	Build Rate (°/100ft)	Turn Rate (°/100ft)
0.00	0.00	0.00	0.00	0.00	0.00	0.00	0.00	0.00	0.00
100.00	0.00	0.00	100.00	0.00	0.00	0.00	0.00	0.00	0.00
200.00	0.00	0.00	200.00	0.00	0.00	0.00	0.00	0.00	0.00
300.00	0.00	0.00	300.00	0.00	0.00	0.00	0.00	0.00	0.00
Start Build 2.00									
400.00	2.00	255.62	399.98	-0.43	-1.69	-0.12	2.00	2.00	0.00
500.00	4.00	255.62	499.84	-1.73	-6.76	-0.50	2.00	2.00	0.00
600.00	6.00	255.62	599.45	-3.90	-15.20	-1.12	2.00	2.00	0.00
700.00	8.00	255.62	698.70	-6.92	-27.01	-1.98	2.00	2.00	0.00
800.00	10.00	255.62	797.47	-10.81	-42.16	-3.09	2.00	2.00	0.00
900.00	12.00	255.62	895.62	-15.55	-60.64	-4.45	2.00	2.00	0.00
1,000.00	14.00	255.62	993.06	-21.13	-82.43	-6.05	2.00	2.00	0.00
1,100.00	16.00	255.62	1,089.64	-27.56	-107.50	-7.89	2.00	2.00	0.00
1,200.00	18.00	255.62	1,185.27	-34.82	-135.82	-9.97	2.00	2.00	0.00
1,300.00	20.00	255.62	1,279.82	-42.90	-167.36	-12.28	2.00	2.00	0.00
1,400.00	22.00	255.62	1,373.17	-51.80	-202.07	-14.83	2.00	2.00	0.00
1,500.00	24.00	255.62	1,465.21	-61.50	-239.92	-17.60	2.00	2.00	0.00
1,600.00	26.00	255.62	1,555.84	-72.00	-280.85	-20.61	2.00	2.00	0.00
1,619.04	26.38	255.62	1,572.93	-74.08	-288.99	-21.21	2.00	2.00	0.00
Start 3744.05 hold at 1619.04 MD									
1,700.00	26.38	255.62	1,645.45	-83.02	-323.84	-23.76	0.00	0.00	0.00
1,760.89	26.38	255.62	1,700.00	-89.73	-350.05	-25.68	0.00	0.00	0.00
9 5/8"									
1,800.00	26.38	255.62	1,735.04	-94.05	-366.88	-26.92	0.00	0.00	0.00
1,900.00	26.38	255.62	1,824.63	-105.08	-409.92	-30.08	0.00	0.00	0.00
2,000.00	26.38	255.62	1,914.21	-116.12	-452.96	-33.24	0.00	0.00	0.00
2,100.00	26.38	255.62	2,003.80	-127.15	-496.01	-36.39	0.00	0.00	0.00
2,200.00	26.38	255.62	2,093.39	-138.18	-539.05	-39.55	0.00	0.00	0.00
2,300.00	26.38	255.62	2,182.97	-149.22	-582.09	-42.71	0.00	0.00	0.00
2,400.00	26.38	255.62	2,272.56	-160.25	-625.13	-45.87	0.00	0.00	0.00
2,500.00	26.38	255.62	2,362.14	-171.28	-668.17	-49.03	0.00	0.00	0.00
2,600.00	26.38	255.62	2,451.73	-182.32	-711.22	-52.19	0.00	0.00	0.00
2,700.00	26.38	255.62	2,541.32	-193.35	-754.26	-55.34	0.00	0.00	0.00
2,800.00	26.38	255.62	2,630.90	-204.39	-797.30	-58.50	0.00	0.00	0.00
2,900.00	26.38	255.62	2,720.49	-215.42	-840.34	-61.66	0.00	0.00	0.00
3,000.00	26.38	255.62	2,810.07	-226.45	-883.38	-64.82	0.00	0.00	0.00
3,100.00	26.38	255.62	2,899.66	-237.49	-926.42	-67.98	0.00	0.00	0.00
3,200.00	26.38	255.62	2,989.25	-248.52	-969.47	-71.14	0.00	0.00	0.00
3,300.00	26.38	255.62	3,078.83	-259.55	-1,012.51	-74.29	0.00	0.00	0.00
3,400.00	26.38	255.62	3,168.42	-270.59	-1,055.55	-77.45	0.00	0.00	0.00
3,500.00	26.38	255.62	3,258.00	-281.62	-1,098.59	-80.61	0.00	0.00	0.00
3,600.00	26.38	255.62	3,347.59	-292.65	-1,141.63	-83.77	0.00	0.00	0.00
3,700.00	26.38	255.62	3,437.18	-303.69	-1,184.67	-86.93	0.00	0.00	0.00
3,800.00	26.38	255.62	3,526.76	-314.72	-1,227.72	-90.08	0.00	0.00	0.00
3,900.00	26.38	255.62	3,616.35	-325.76	-1,270.76	-93.24	0.00	0.00	0.00
4,000.00	26.38	255.62	3,705.93	-336.79	-1,313.80	-96.40	0.00	0.00	0.00
4,100.00	26.38	255.62	3,795.52	-347.82	-1,356.84	-99.56	0.00	0.00	0.00
4,200.00	26.38	255.62	3,885.11	-358.86	-1,399.88	-102.72	0.00	0.00	0.00
4,300.00	26.38	255.62	3,974.69	-369.89	-1,442.92	-105.88	0.00	0.00	0.00
4,400.00	26.38	255.62	4,064.28	-380.92	-1,485.97	-109.03	0.00	0.00	0.00
4,500.00	26.38	255.62	4,153.87	-391.96	-1,529.01	-112.19	0.00	0.00	0.00
4,600.00	26.38	255.62	4,243.45	-402.99	-1,572.05	-115.35	0.00	0.00	0.00
4,700.00	26.38	255.62	4,333.04	-414.02	-1,615.09	-118.51	0.00	0.00	0.00

Database:	Casper District	Local Co-ordinate Reference:	Well Evans 4N-14C-XR
Company:	Synergy Resources Corp.	TVD Reference:	GL 4940 & KB 20 @ 4960.00ft (PD 462)
Project:	Weld County, CO NAD 83	MD Reference:	GL 4940 & KB 20 @ 4960.00ft (PD 462)
Site:	Evans 7-26 Pad	North Reference:	True
Well:	Evans 4N-14C-XR	Survey Calculation Method:	Minimum Curvature
Wellbore:	OH		
Design:	Plan #1		

Planned Survey									
Measured Depth (ft)	Inclination (°)	Azimuth (°)	Vertical Depth (ft)	+N/-S (ft)	+E/-W (ft)	Vertical Section (ft)	Dogleg Rate (°/100ft)	Build Rate (°/100ft)	Turn Rate (°/100ft)
4,800.00	26.38	255.62	4,422.62	-425.06	-1,658.13	-121.67	0.00	0.00	0.00
4,900.00	26.38	255.62	4,512.21	-436.09	-1,701.18	-124.83	0.00	0.00	0.00
5,000.00	26.38	255.62	4,601.80	-447.13	-1,744.22	-127.98	0.00	0.00	0.00
5,100.00	26.38	255.62	4,691.38	-458.16	-1,787.26	-131.14	0.00	0.00	0.00
5,200.00	26.38	255.62	4,780.97	-469.19	-1,830.30	-134.30	0.00	0.00	0.00
5,300.00	26.38	255.62	4,870.55	-480.23	-1,873.34	-137.46	0.00	0.00	0.00
5,363.09	26.38	255.62	4,927.08	-487.19	-1,900.50	-139.45	0.00	0.00	0.00
Start Drop -2.00									
5,400.00	25.64	255.62	4,960.24	-491.21	-1,916.18	-140.60	2.00	-2.00	0.00
5,500.00	23.64	255.62	5,051.13	-501.56	-1,956.56	-143.56	2.00	-2.00	0.00
5,600.00	21.64	255.62	5,143.42	-511.12	-1,993.86	-146.30	2.00	-2.00	0.00
5,700.00	19.64	255.62	5,237.00	-519.87	-2,028.00	-148.81	2.00	-2.00	0.00
5,800.00	17.64	255.62	5,331.74	-527.81	-2,058.97	-151.08	2.00	-2.00	0.00
5,900.00	15.64	255.62	5,427.55	-534.92	-2,086.71	-153.11	2.00	-2.00	0.00
6,000.00	13.64	255.62	5,524.30	-541.20	-2,111.19	-154.91	2.00	-2.00	0.00
6,100.00	11.64	255.62	5,621.87	-546.63	-2,132.39	-156.47	2.00	-2.00	0.00
6,200.00	9.64	255.62	5,720.14	-551.22	-2,150.28	-157.78	2.00	-2.00	0.00
6,300.00	7.64	255.62	5,819.00	-554.95	-2,164.84	-158.85	2.00	-2.00	0.00
6,400.00	5.64	255.62	5,918.33	-557.82	-2,176.04	-159.67	2.00	-2.00	0.00
6,500.00	3.64	255.62	6,017.99	-559.83	-2,183.88	-160.24	2.00	-2.00	0.00
6,600.00	1.64	255.62	6,117.88	-560.98	-2,188.35	-160.57	2.00	-2.00	0.00
6,682.13	0.00	0.00	6,200.00	-561.27	-2,189.49	-160.66	2.00	-2.00	0.00
Start 585.13 hold at 6682.13 MD									
6,700.00	0.00	0.00	6,217.87	-561.27	-2,189.49	-160.66	0.00	0.00	0.00
6,800.00	0.00	0.00	6,317.87	-561.27	-2,189.49	-160.66	0.00	0.00	0.00
6,900.00	0.00	0.00	6,417.87	-561.27	-2,189.49	-160.66	0.00	0.00	0.00
7,000.00	0.00	0.00	6,517.87	-561.27	-2,189.49	-160.66	0.00	0.00	0.00
7,100.00	0.00	0.00	6,617.87	-561.27	-2,189.49	-160.66	0.00	0.00	0.00
7,200.00	0.00	0.00	6,717.87	-561.27	-2,189.49	-160.66	0.00	0.00	0.00
7,267.26	0.00	0.00	6,785.13	-561.27	-2,189.49	-160.66	0.00	0.00	0.00
Start DLS 11.00 TFO 359.90									
7,300.00	3.60	359.90	6,817.85	-560.24	-2,189.49	-159.64	11.00	11.00	0.00
7,400.00	14.60	359.90	6,916.44	-544.45	-2,189.52	-144.10	11.00	11.00	0.00
7,500.00	25.60	359.90	7,010.20	-510.13	-2,189.58	-110.33	11.00	11.00	0.00
7,600.00	36.60	359.90	7,095.70	-458.56	-2,189.67	-59.57	11.00	11.00	0.00
7,700.00	47.60	359.90	7,169.78	-391.61	-2,189.79	6.32	11.00	11.00	0.00
7,800.00	58.60	359.90	7,229.73	-311.77	-2,189.93	84.90	11.00	11.00	0.00
7,900.00	69.60	359.90	7,273.34	-221.95	-2,190.09	173.30	11.00	11.00	0.00
8,000.00	80.60	359.90	7,299.01	-125.46	-2,190.26	268.27	11.00	11.00	0.00
8,085.44	90.00	359.90	7,306.00	-40.40	-2,190.41	351.98	11.00	11.00	0.00
Start 12209.86 hold at 8085.44 MD									
8,100.00	90.00	359.90	7,306.00	-25.84	-2,190.44	366.31	0.00	0.00	0.00
8,200.00	90.00	359.90	7,306.00	74.16	-2,190.62	464.73	0.00	0.00	0.00
8,300.00	90.00	359.90	7,306.00	174.16	-2,190.79	563.15	0.00	0.00	0.00
8,400.00	90.00	359.90	7,306.00	274.16	-2,190.97	661.57	0.00	0.00	0.00
8,500.00	90.00	359.90	7,306.00	374.16	-2,191.15	759.99	0.00	0.00	0.00
8,600.00	90.00	359.90	7,306.00	474.16	-2,191.32	858.41	0.00	0.00	0.00
8,700.00	90.00	359.90	7,306.00	574.16	-2,191.50	956.83	0.00	0.00	0.00
8,800.00	90.00	359.90	7,306.00	674.16	-2,191.68	1,055.25	0.00	0.00	0.00
8,900.00	90.00	359.90	7,306.00	774.16	-2,191.85	1,153.66	0.00	0.00	0.00
9,000.00	90.00	359.90	7,306.00	874.16	-2,192.03	1,252.08	0.00	0.00	0.00
9,100.00	90.00	359.90	7,306.00	974.16	-2,192.21	1,350.50	0.00	0.00	0.00
9,200.00	90.00	359.90	7,306.00	1,074.16	-2,192.39	1,448.92	0.00	0.00	0.00
9,300.00	90.00	359.90	7,306.00	1,174.16	-2,192.56	1,547.34	0.00	0.00	0.00

Database:	Casper District	Local Co-ordinate Reference:	Well Evans 4N-14C-XR
Company:	Synergy Resources Corp.	TVD Reference:	GL 4940 & KB 20 @ 4960.00ft (PD 462)
Project:	Weld County, CO NAD 83	MD Reference:	GL 4940 & KB 20 @ 4960.00ft (PD 462)
Site:	Evans 7-26 Pad	North Reference:	True
Well:	Evans 4N-14C-XR	Survey Calculation Method:	Minimum Curvature
Wellbore:	OH		
Design:	Plan #1		

Planned Survey									
Measured Depth (ft)	Inclination (°)	Azimuth (°)	Vertical Depth (ft)	+N/-S (ft)	+E/-W (ft)	Vertical Section (ft)	Dogleg Rate (°/100ft)	Build Rate (°/100ft)	Turn Rate (°/100ft)
9,400.00	90.00	359.90	7,306.00	1,274.16	-2,192.74	1,645.76	0.00	0.00	0.00
9,500.00	90.00	359.90	7,306.00	1,374.16	-2,192.92	1,744.18	0.00	0.00	0.00
9,600.00	90.00	359.90	7,306.00	1,474.16	-2,193.09	1,842.60	0.00	0.00	0.00
9,700.00	90.00	359.90	7,306.00	1,574.16	-2,193.27	1,941.02	0.00	0.00	0.00
9,800.00	90.00	359.90	7,306.00	1,674.16	-2,193.45	2,039.44	0.00	0.00	0.00
9,900.00	90.00	359.90	7,306.00	1,774.16	-2,193.63	2,137.86	0.00	0.00	0.00
10,000.00	90.00	359.90	7,306.00	1,874.15	-2,193.80	2,236.28	0.00	0.00	0.00
10,100.00	90.00	359.90	7,306.00	1,974.15	-2,193.98	2,334.70	0.00	0.00	0.00
10,200.00	90.00	359.90	7,306.00	2,074.15	-2,194.16	2,433.12	0.00	0.00	0.00
10,300.00	90.00	359.90	7,306.00	2,174.15	-2,194.33	2,531.54	0.00	0.00	0.00
10,400.00	90.00	359.90	7,306.00	2,274.15	-2,194.51	2,629.95	0.00	0.00	0.00
10,500.00	90.00	359.90	7,306.00	2,374.15	-2,194.69	2,728.37	0.00	0.00	0.00
10,600.00	90.00	359.90	7,306.00	2,474.15	-2,194.86	2,826.79	0.00	0.00	0.00
10,700.00	90.00	359.90	7,306.00	2,574.15	-2,195.04	2,925.21	0.00	0.00	0.00
10,800.00	90.00	359.90	7,306.00	2,674.15	-2,195.22	3,023.63	0.00	0.00	0.00
10,900.00	90.00	359.90	7,306.00	2,774.15	-2,195.40	3,122.05	0.00	0.00	0.00
11,000.00	90.00	359.90	7,306.00	2,874.15	-2,195.57	3,220.47	0.00	0.00	0.00
11,100.00	90.00	359.90	7,306.00	2,974.15	-2,195.75	3,318.89	0.00	0.00	0.00
11,200.00	90.00	359.90	7,306.00	3,074.15	-2,195.93	3,417.31	0.00	0.00	0.00
11,300.00	90.00	359.90	7,306.00	3,174.15	-2,196.10	3,515.73	0.00	0.00	0.00
11,400.00	90.00	359.90	7,306.00	3,274.15	-2,196.28	3,614.15	0.00	0.00	0.00
11,500.00	90.00	359.90	7,306.00	3,374.15	-2,196.46	3,712.57	0.00	0.00	0.00
11,600.00	90.00	359.90	7,306.00	3,474.15	-2,196.64	3,810.99	0.00	0.00	0.00
11,700.00	90.00	359.90	7,306.00	3,574.15	-2,196.81	3,909.41	0.00	0.00	0.00
11,800.00	90.00	359.90	7,306.00	3,674.15	-2,196.99	4,007.83	0.00	0.00	0.00
11,900.00	90.00	359.90	7,306.00	3,774.15	-2,197.17	4,106.25	0.00	0.00	0.00
12,000.00	90.00	359.90	7,306.00	3,874.15	-2,197.34	4,204.66	0.00	0.00	0.00
12,100.00	90.00	359.90	7,306.00	3,974.15	-2,197.52	4,303.08	0.00	0.00	0.00
12,200.00	90.00	359.90	7,306.00	4,074.15	-2,197.70	4,401.50	0.00	0.00	0.00
12,300.00	90.00	359.90	7,306.00	4,174.15	-2,197.87	4,499.92	0.00	0.00	0.00
12,400.00	90.00	359.90	7,306.00	4,274.15	-2,198.05	4,598.34	0.00	0.00	0.00
12,500.00	90.00	359.90	7,306.00	4,374.15	-2,198.23	4,696.76	0.00	0.00	0.00
12,600.00	90.00	359.90	7,306.00	4,474.15	-2,198.41	4,795.18	0.00	0.00	0.00
12,700.00	90.00	359.90	7,306.00	4,574.15	-2,198.58	4,893.60	0.00	0.00	0.00
12,800.00	90.00	359.90	7,306.00	4,674.15	-2,198.76	4,992.02	0.00	0.00	0.00
12,900.00	90.00	359.90	7,306.00	4,774.15	-2,198.94	5,090.44	0.00	0.00	0.00
13,000.00	90.00	359.90	7,306.00	4,874.15	-2,199.11	5,188.86	0.00	0.00	0.00
13,100.00	90.00	359.90	7,306.00	4,974.15	-2,199.29	5,287.28	0.00	0.00	0.00
13,200.00	90.00	359.90	7,306.00	5,074.15	-2,199.47	5,385.70	0.00	0.00	0.00
13,300.00	90.00	359.90	7,306.00	5,174.15	-2,199.65	5,484.12	0.00	0.00	0.00
13,400.00	90.00	359.90	7,306.00	5,274.15	-2,199.82	5,582.54	0.00	0.00	0.00
13,500.00	90.00	359.90	7,306.00	5,374.15	-2,200.00	5,680.95	0.00	0.00	0.00
13,600.00	90.00	359.90	7,306.00	5,474.15	-2,200.18	5,779.37	0.00	0.00	0.00
13,700.00	90.00	359.90	7,306.00	5,574.15	-2,200.35	5,877.79	0.00	0.00	0.00
13,800.00	90.00	359.90	7,306.00	5,674.15	-2,200.53	5,976.21	0.00	0.00	0.00
13,900.00	90.00	359.90	7,306.00	5,774.15	-2,200.71	6,074.63	0.00	0.00	0.00
14,000.00	90.00	359.90	7,306.00	5,874.15	-2,200.88	6,173.05	0.00	0.00	0.00
14,100.00	90.00	359.90	7,306.00	5,974.15	-2,201.06	6,271.47	0.00	0.00	0.00
14,200.00	90.00	359.90	7,306.00	6,074.15	-2,201.24	6,369.89	0.00	0.00	0.00
14,300.00	90.00	359.90	7,306.00	6,174.15	-2,201.42	6,468.31	0.00	0.00	0.00
14,400.00	90.00	359.90	7,306.00	6,274.15	-2,201.59	6,566.73	0.00	0.00	0.00
14,500.00	90.00	359.90	7,306.00	6,374.15	-2,201.77	6,665.15	0.00	0.00	0.00
14,600.00	90.00	359.90	7,306.00	6,474.15	-2,201.95	6,763.57	0.00	0.00	0.00
14,700.00	90.00	359.90	7,306.00	6,574.15	-2,202.12	6,861.99	0.00	0.00	0.00

Database:	Casper District	Local Co-ordinate Reference:	Well Evans 4N-14C-XR
Company:	Synergy Resources Corp.	TVD Reference:	GL 4940 & KB 20 @ 4960.00ft (PD 462)
Project:	Weld County, CO NAD 83	MD Reference:	GL 4940 & KB 20 @ 4960.00ft (PD 462)
Site:	Evans 7-26 Pad	North Reference:	True
Well:	Evans 4N-14C-XR	Survey Calculation Method:	Minimum Curvature
Wellbore:	OH		
Design:	Plan #1		

Planned Survey									
Measured Depth (ft)	Inclination (°)	Azimuth (°)	Vertical Depth (ft)	+N/-S (ft)	+E/-W (ft)	Vertical Section (ft)	Dogleg Rate (°/100ft)	Build Rate (°/100ft)	Turn Rate (°/100ft)
14,800.00	90.00	359.90	7,306.00	6,674.15	-2,202.30	6,960.41	0.00	0.00	0.00
14,900.00	90.00	359.90	7,306.00	6,774.15	-2,202.48	7,058.83	0.00	0.00	0.00
15,000.00	90.00	359.90	7,306.00	6,874.15	-2,202.66	7,157.25	0.00	0.00	0.00
15,100.00	90.00	359.90	7,306.00	6,974.15	-2,202.83	7,255.66	0.00	0.00	0.00
15,200.00	90.00	359.90	7,306.00	7,074.15	-2,203.01	7,354.08	0.00	0.00	0.00
15,300.00	90.00	359.90	7,306.00	7,174.15	-2,203.19	7,452.50	0.00	0.00	0.00
15,400.00	90.00	359.90	7,306.00	7,274.15	-2,203.36	7,550.92	0.00	0.00	0.00
15,500.00	90.00	359.90	7,306.00	7,374.15	-2,203.54	7,649.34	0.00	0.00	0.00
15,600.00	90.00	359.90	7,306.00	7,474.15	-2,203.72	7,747.76	0.00	0.00	0.00
15,700.00	90.00	359.90	7,306.00	7,574.15	-2,203.89	7,846.18	0.00	0.00	0.00
15,800.00	90.00	359.90	7,306.00	7,674.15	-2,204.07	7,944.60	0.00	0.00	0.00
15,900.00	90.00	359.90	7,306.00	7,774.15	-2,204.25	8,043.02	0.00	0.00	0.00
16,000.00	90.00	359.90	7,306.00	7,874.15	-2,204.43	8,141.44	0.00	0.00	0.00
16,100.00	90.00	359.90	7,306.00	7,974.15	-2,204.60	8,239.86	0.00	0.00	0.00
16,200.00	90.00	359.90	7,306.00	8,074.15	-2,204.78	8,338.28	0.00	0.00	0.00
16,300.00	90.00	359.90	7,306.00	8,174.15	-2,204.96	8,436.70	0.00	0.00	0.00
16,400.00	90.00	359.90	7,306.00	8,274.15	-2,205.13	8,535.12	0.00	0.00	0.00
16,500.00	90.00	359.90	7,306.00	8,374.14	-2,205.31	8,633.54	0.00	0.00	0.00
16,600.00	90.00	359.90	7,306.00	8,474.14	-2,205.49	8,731.95	0.00	0.00	0.00
16,700.00	90.00	359.90	7,306.00	8,574.14	-2,205.67	8,830.37	0.00	0.00	0.00
16,800.00	90.00	359.90	7,306.00	8,674.14	-2,205.84	8,928.79	0.00	0.00	0.00
16,900.00	90.00	359.90	7,306.00	8,774.14	-2,206.02	9,027.21	0.00	0.00	0.00
17,000.00	90.00	359.90	7,306.00	8,874.14	-2,206.20	9,125.63	0.00	0.00	0.00
17,100.00	90.00	359.90	7,306.00	8,974.14	-2,206.37	9,224.05	0.00	0.00	0.00
17,200.00	90.00	359.90	7,306.00	9,074.14	-2,206.55	9,322.47	0.00	0.00	0.00
17,300.00	90.00	359.90	7,306.00	9,174.14	-2,206.73	9,420.89	0.00	0.00	0.00
17,400.00	90.00	359.90	7,306.00	9,274.14	-2,206.90	9,519.31	0.00	0.00	0.00
17,500.00	90.00	359.90	7,306.00	9,374.14	-2,207.08	9,617.73	0.00	0.00	0.00
17,600.00	90.00	359.90	7,306.00	9,474.14	-2,207.26	9,716.15	0.00	0.00	0.00
17,700.00	90.00	359.90	7,306.00	9,574.14	-2,207.44	9,814.57	0.00	0.00	0.00
17,800.00	90.00	359.90	7,306.00	9,674.14	-2,207.61	9,912.99	0.00	0.00	0.00
17,900.00	90.00	359.90	7,306.00	9,774.14	-2,207.79	10,011.41	0.00	0.00	0.00
18,000.00	90.00	359.90	7,306.00	9,874.14	-2,207.97	10,109.83	0.00	0.00	0.00
18,100.00	90.00	359.90	7,306.00	9,974.14	-2,208.14	10,208.24	0.00	0.00	0.00
18,200.00	90.00	359.90	7,306.00	10,074.14	-2,208.32	10,306.66	0.00	0.00	0.00
18,300.00	90.00	359.90	7,306.00	10,174.14	-2,208.50	10,405.08	0.00	0.00	0.00
18,400.00	90.00	359.90	7,306.00	10,274.14	-2,208.68	10,503.50	0.00	0.00	0.00
18,500.00	90.00	359.90	7,306.00	10,374.14	-2,208.85	10,601.92	0.00	0.00	0.00
18,600.00	90.00	359.90	7,306.00	10,474.14	-2,209.03	10,700.34	0.00	0.00	0.00
18,700.00	90.00	359.90	7,306.00	10,574.14	-2,209.21	10,798.76	0.00	0.00	0.00
18,800.00	90.00	359.90	7,306.00	10,674.14	-2,209.38	10,897.18	0.00	0.00	0.00
18,900.00	90.00	359.90	7,306.00	10,774.14	-2,209.56	10,995.60	0.00	0.00	0.00
19,000.00	90.00	359.90	7,306.00	10,874.14	-2,209.74	11,094.02	0.00	0.00	0.00
19,100.00	90.00	359.90	7,306.00	10,974.14	-2,209.91	11,192.44	0.00	0.00	0.00
19,200.00	90.00	359.90	7,306.00	11,074.14	-2,210.09	11,290.86	0.00	0.00	0.00
19,300.00	90.00	359.90	7,306.00	11,174.14	-2,210.27	11,389.28	0.00	0.00	0.00
19,400.00	90.00	359.90	7,306.00	11,274.14	-2,210.45	11,487.70	0.00	0.00	0.00
19,500.00	90.00	359.90	7,306.00	11,374.14	-2,210.62	11,586.12	0.00	0.00	0.00
19,600.00	90.00	359.90	7,306.00	11,474.14	-2,210.80	11,684.54	0.00	0.00	0.00
19,700.00	90.00	359.90	7,306.00	11,574.14	-2,210.98	11,782.95	0.00	0.00	0.00
19,800.00	90.00	359.90	7,306.00	11,674.14	-2,211.15	11,881.37	0.00	0.00	0.00
19,900.00	90.00	359.90	7,306.00	11,774.14	-2,211.33	11,979.79	0.00	0.00	0.00
20,000.00	90.00	359.90	7,306.00	11,874.14	-2,211.51	12,078.21	0.00	0.00	0.00
20,100.00	90.00	359.90	7,306.00	11,974.14	-2,211.69	12,176.63	0.00	0.00	0.00

Database:	Casper District	Local Co-ordinate Reference:	Well Evans 4N-14C-XR
Company:	Synergy Resources Corp.	TVD Reference:	GL 4940 & KB 20 @ 4960.00ft (PD 462)
Project:	Weld County, CO NAD 83	MD Reference:	GL 4940 & KB 20 @ 4960.00ft (PD 462)
Site:	Evans 7-26 Pad	North Reference:	True
Well:	Evans 4N-14C-XR	Survey Calculation Method:	Minimum Curvature
Wellbore:	OH		
Design:	Plan #1		

Planned Survey									
Measured Depth (ft)	Inclination (°)	Azimuth (°)	Vertical Depth (ft)	+N/-S (ft)	+E/-W (ft)	Vertical Section (ft)	Dogleg Rate (°/100ft)	Build Rate (°/100ft)	Turn Rate (°/100ft)
20,200.00	90.00	359.90	7,306.00	12,074.14	-2,211.86	12,275.05	0.00	0.00	0.00
20,295.31	90.00	359.90	7,306.00	12,169.44	-2,212.03	12,368.85	0.00	0.00	0.00
TD at 20295.31 - 4N-14C-XR(460 FNL 754 FWL)PBHL									

Design Targets									
Target Name	Dip Angle (°)	Dip Dir. (°)	TVD (ft)	+N/-S (ft)	+E/-W (ft)	Northing (usft)	Easting (usft)	Latitude	Longitude
- hit/miss target									
- Shape									
4N-14C-XR(460 FNL 75-	0.00	0.00	7,306.00	12,169.45	-2,212.03	1,391,459.66	3,207,867.04	40.4055570	-104.7535770
- plan hits target center									
- Point									

Casing Points					
Measured Depth (ft)	Vertical Depth (ft)	Name	Casing Diameter (in)	Hole Diameter (in)	
1,760.89	1,700.00	9 5/8"	9.625	13.500	

Plan Annotations				
Measured Depth (ft)	Vertical Depth (ft)	Local Coordinates		Comment
		+N/-S (ft)	+E/-W (ft)	
300.00	300.00	0.00	0.00	Start Build 2.00
1,619.04	1,572.93	-74.08	-288.99	Start 3744.05 hold at 1619.04 MD
5,363.09	4,927.08	-487.19	-1,900.50	Start Drop -2.00
6,682.13	6,200.00	-561.27	-2,189.49	Start 585.13 hold at 6682.13 MD
7,267.26	6,785.13	-561.27	-2,189.49	Start DLS 11.00 TFO 359.90
8,085.44	7,306.00	-40.40	-2,190.41	Start 12209.86 hold at 8085.44 MD
20,295.31	7,306.00	12,169.44	-2,212.03	TD at 20295.31