



PROJECT DETAILS: Weld County, CO NAD 83

Geodetic System: US State Plane 1983
Datum: North American Datum 1983
Ellipsoid: GRS 1980
Zone: Colorado Northern Zone
System Datum: Mean Sea Level
Local North: True

Project: Weld County, CO NAD 83
Site: Evans 7-26 Pad
Well: Evans 4C-14-XR
Wellbore: OH
Design: Plan #1



Azinuths to True North
Magnetic North: 8.48°



Magnetic Field
Strength: 52529.2snT
Dip Angle: 66.93°
Date: 3/9/2016
Model: BGGM2015

SECTION DETAILS

MD	Inc	Azi	TVD	+N/-S	+E/-W	Dleg	TFace	VSect
0.00	0.00	0.00	0.00	0.00	0.00	0.00	0.00	0.00
200.00	0.00	0.00	200.00	0.00	0.00	0.00	0.00	0.00
1256.59	21.13	252.87	1232.79	-56.75	-184.10	2.00	252.87	-27.33
5689.06	21.13	252.87	5367.21	-527.49	-1711.15	0.00	0.00	-254.06
6745.65	0.00	0.00	6400.00	-584.24	-1895.25	2.00	180.00	-281.39
7223.78	0.00	0.00	6878.13	-584.24	-1895.25	0.00	0.00	-281.39
8041.70	89.97	359.90	7399.00	-63.63	-1896.18	11.00	359.90	232.99
20247.81	89.97	359.90	7405.00	12142.46	-1917.95	0.00	0.00	12293.00

DESIGN TARGET DETAILS

Name	TVD	+N/-S	+E/-W	Northing	Easting	Latitude	Longitude	Shape
PBHL	7405.00	12142.46	-1917.95	1391455.21	3208161.17	40.4055380	-104.7525210	Point
- plan hits target center								

WELL DETAILS: Evans 4C-14-XR

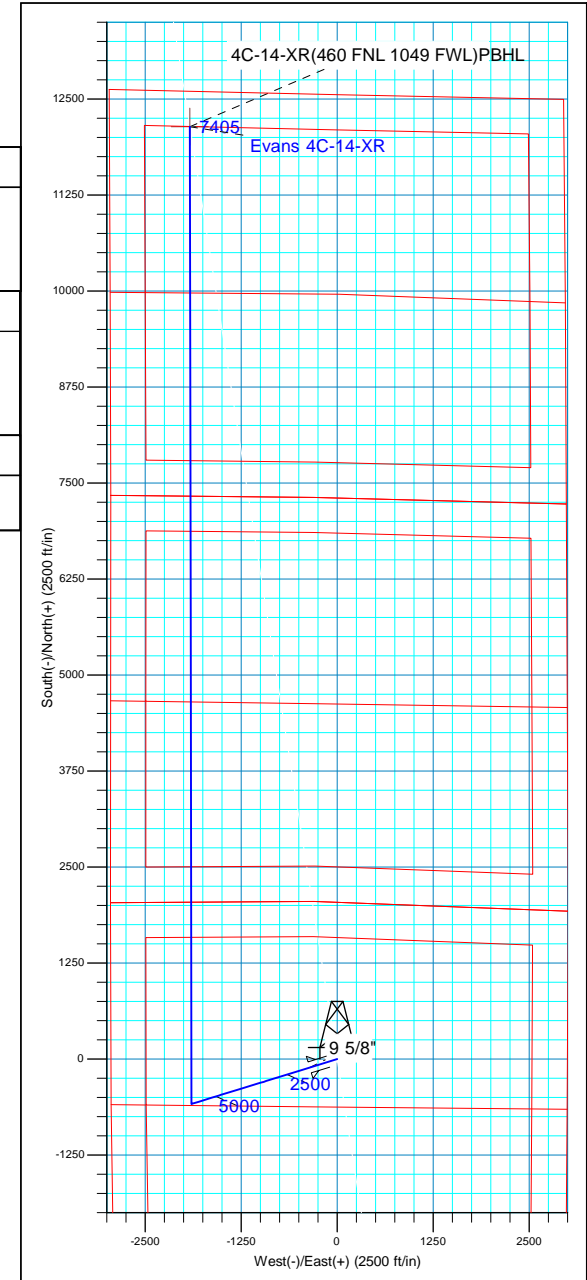
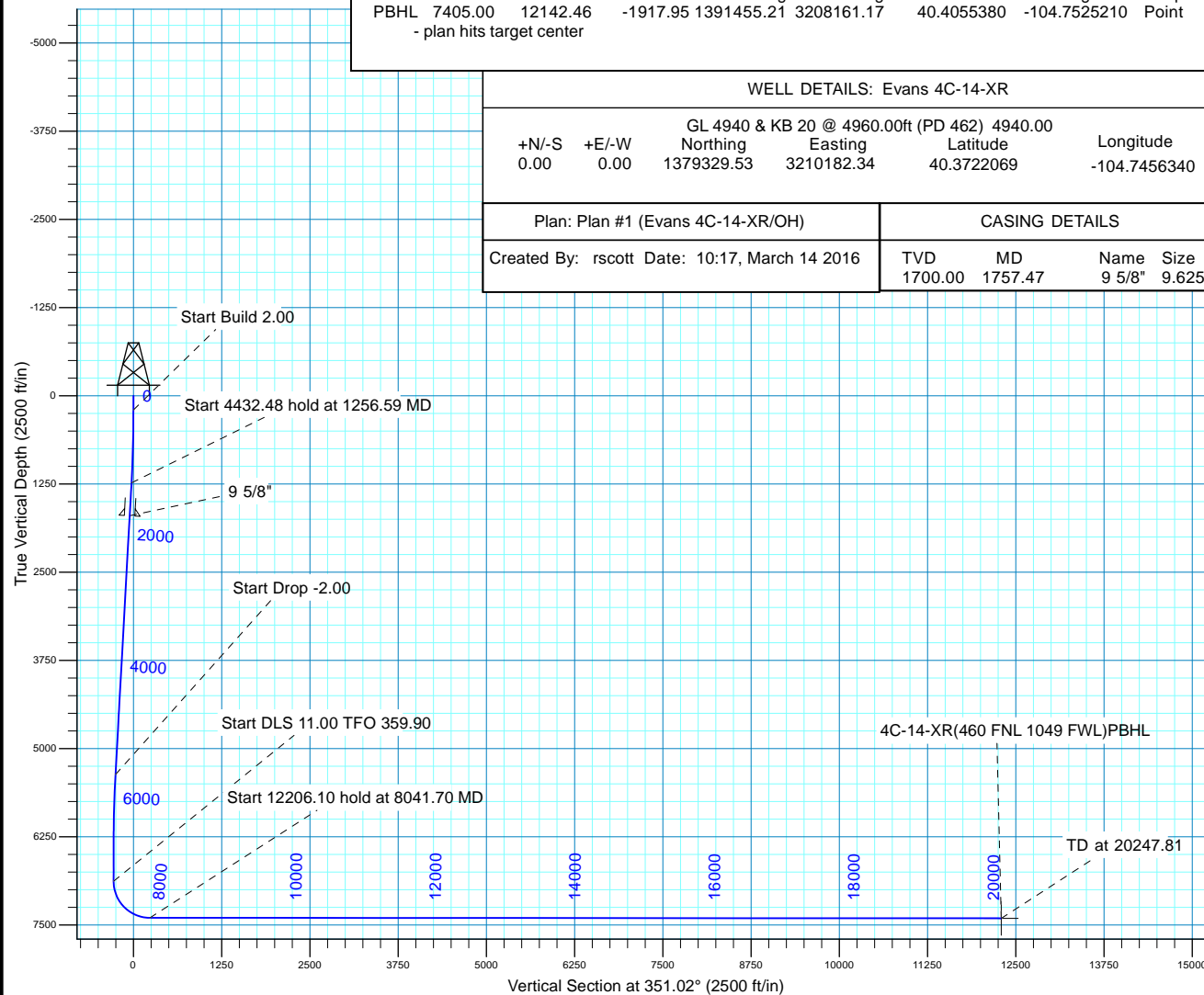
+N/-S	+E/-W	GL 4940 & KB 20 @ 4960.00ft (PD 462)	4940.00	Latitude	Longitude
0.00	0.00	Northing	Easting	40.3722069	-104.7456340
		1379329.53	3210182.34		

Plan: Plan #1 (Evans 4C-14-XR/OH)

CASING DETAILS

Created By: rscott Date: 10:17, March 14 2016

TVD	MD	Name	Size
1700.00	1757.47	9 5/8"	9.625





Synergy Resources Corp.

Weld County, CO NAD 83

Evans 7-26 Pad

Evans 4C-14-XR

OH

Plan: Plan #1

Standard Planning Report

13 March, 2016



Database:	Casper District	Local Co-ordinate Reference:	Well Evans 4C-14-XR
Company:	Synergy Resources Corp.	TVD Reference:	GL 4940 & KB 20 @ 4960.00ft (PD 462)
Project:	Weld County, CO NAD 83	MD Reference:	GL 4940 & KB 20 @ 4960.00ft (PD 462)
Site:	Evans 7-26 Pad	North Reference:	True
Well:	Evans 4C-14-XR	Survey Calculation Method:	Minimum Curvature
Wellbore:	OH		
Design:	Plan #1		

Project	Weld County, CO NAD 83		
Map System:	US State Plane 1983	System Datum:	Mean Sea Level
Geo Datum:	North American Datum 1983		
Map Zone:	Colorado Northern Zone		

Site	Evans 7-26 Pad, SECTION 26 T5N R66W				
Site Position:		Northing:	1,379,289.48 usft	Latitude:	40.3720970
From:	Lat/Long	Easting:	3,210,182.68 usft	Longitude:	-104.7456340
Position Uncertainty:	3.28 ft	Slot Radius:	13.200 in	Grid Convergence:	0.49 °

Well	Evans 4C-14-XR, 2042 FNL 2998 FEL					
Well Position	+N/-S	40.06 ft	Northing:	1,379,329.53 usft	Latitude:	40.3722070
	+E/-W	0.00 ft	Easting:	3,210,182.34 usft	Longitude:	-104.7456340
Position Uncertainty		3.28 ft	Wellhead Elevation:	0.00 ft	Ground Level:	4,940.00 ft

Wellbore	OH				
Magnetics	Model Name	Sample Date	Declination (°)	Dip Angle (°)	Field Strength (nT)
	BGGM2015	3/9/2016	8.48	66.93	52,529

Design	Plan #1			
Audit Notes:				
Version:	Phase:	PLAN	Tie On Depth:	0.00
Vertical Section:	Depth From (TVD) (ft)	+N/-S (ft)	+E/-W (ft)	Direction (°)
	0.00	0.00	0.00	351.02

Plan Sections										
Measured Depth (ft)	Inclination (°)	Azimuth (°)	Vertical Depth (ft)	+N/-S (ft)	+E/-W (ft)	Dogleg Rate (°/100ft)	Build Rate (°/100ft)	Turn Rate (°/100ft)	TFO (°)	Target
0.00	0.00	0.00	0.00	0.00	0.00	0.00	0.00	0.00	0.00	
200.00	0.00	0.00	200.00	0.00	0.00	0.00	0.00	0.00	0.00	
1,256.59	21.13	252.87	1,232.79	-56.75	-184.10	2.00	2.00	0.00	252.87	
5,689.06	21.13	252.87	5,367.21	-527.49	-1,711.15	0.00	0.00	0.00	0.00	
6,745.65	0.00	0.00	6,400.00	-584.24	-1,895.25	2.00	-2.00	0.00	180.00	
7,223.78	0.00	0.00	6,878.13	-584.24	-1,895.25	0.00	0.00	0.00	0.00	
8,041.71	89.97	359.90	7,399.00	-63.63	-1,896.18	11.00	11.00	-0.01	359.90	
20,247.81	89.97	359.90	7,405.00	12,142.46	-1,917.95	0.00	0.00	0.00	0.00	4C-14-XR(460 FNL 11)

Database:	Casper District	Local Co-ordinate Reference:	Well Evans 4C-14-XR
Company:	Synergy Resources Corp.	TVD Reference:	GL 4940 & KB 20 @ 4960.00ft (PD 462)
Project:	Weld County, CO NAD 83	MD Reference:	GL 4940 & KB 20 @ 4960.00ft (PD 462)
Site:	Evans 7-26 Pad	North Reference:	True
Well:	Evans 4C-14-XR	Survey Calculation Method:	Minimum Curvature
Wellbore:	OH		
Design:	Plan #1		

Planned Survey									
Measured Depth (ft)	Inclination (°)	Azimuth (°)	Vertical Depth (ft)	+N/-S (ft)	+E/-W (ft)	Vertical Section (ft)	Dogleg Rate (°/100ft)	Build Rate (°/100ft)	Turn Rate (°/100ft)
0.00	0.00	0.00	0.00	0.00	0.00	0.00	0.00	0.00	0.00
100.00	0.00	0.00	100.00	0.00	0.00	0.00	0.00	0.00	0.00
200.00	0.00	0.00	200.00	0.00	0.00	0.00	0.00	0.00	0.00
Start Build 2.00									
300.00	2.00	252.87	299.98	-0.51	-1.67	-0.25	2.00	2.00	0.00
400.00	4.00	252.87	399.84	-2.06	-6.67	-0.99	2.00	2.00	0.00
500.00	6.00	252.87	499.45	-4.62	-15.00	-2.23	2.00	2.00	0.00
600.00	8.00	252.87	598.70	-8.21	-26.64	-3.96	2.00	2.00	0.00
700.00	10.00	252.87	697.47	-12.82	-41.59	-6.18	2.00	2.00	0.00
800.00	12.00	252.87	795.62	-18.44	-59.82	-8.88	2.00	2.00	0.00
900.00	14.00	252.87	893.06	-25.07	-81.32	-12.07	2.00	2.00	0.00
1,000.00	16.00	252.87	989.64	-32.69	-106.05	-15.75	2.00	2.00	0.00
1,100.00	18.00	252.87	1,085.27	-41.30	-133.99	-19.89	2.00	2.00	0.00
1,200.00	20.00	252.87	1,179.82	-50.90	-165.10	-24.51	2.00	2.00	0.00
1,256.59	21.13	252.87	1,232.79	-56.75	-184.10	-27.33	2.00	2.00	0.00
Start 4432.48 hold at 1256.59 MD									
1,300.00	21.13	252.87	1,273.29	-61.36	-199.05	-29.55	0.00	0.00	0.00
1,400.00	21.13	252.87	1,366.56	-71.98	-233.51	-34.67	0.00	0.00	0.00
1,500.00	21.13	252.87	1,459.84	-82.60	-267.96	-39.78	0.00	0.00	0.00
1,600.00	21.13	252.87	1,553.12	-93.22	-302.41	-44.90	0.00	0.00	0.00
1,700.00	21.13	252.87	1,646.39	-103.84	-336.86	-50.01	0.00	0.00	0.00
1,757.47	21.13	252.87	1,700.00	-109.95	-356.66	-52.95	0.00	0.00	0.00
9 5/8"									
1,800.00	21.13	252.87	1,739.67	-114.46	-371.31	-55.13	0.00	0.00	0.00
1,900.00	21.13	252.87	1,832.94	-125.08	-405.76	-60.24	0.00	0.00	0.00
2,000.00	21.13	252.87	1,926.22	-135.70	-440.21	-65.36	0.00	0.00	0.00
2,100.00	21.13	252.87	2,019.49	-146.32	-474.67	-70.47	0.00	0.00	0.00
2,200.00	21.13	252.87	2,112.77	-156.94	-509.12	-75.59	0.00	0.00	0.00
2,300.00	21.13	252.87	2,206.04	-167.56	-543.57	-80.70	0.00	0.00	0.00
2,400.00	21.13	252.87	2,299.32	-178.18	-578.02	-85.82	0.00	0.00	0.00
2,500.00	21.13	252.87	2,392.59	-188.80	-612.47	-90.93	0.00	0.00	0.00
2,600.00	21.13	252.87	2,485.87	-199.42	-646.92	-96.05	0.00	0.00	0.00
2,700.00	21.13	252.87	2,579.14	-210.04	-681.38	-101.16	0.00	0.00	0.00
2,800.00	21.13	252.87	2,672.42	-220.66	-715.83	-106.28	0.00	0.00	0.00
2,900.00	21.13	252.87	2,765.70	-231.28	-750.28	-111.39	0.00	0.00	0.00
3,000.00	21.13	252.87	2,858.97	-241.91	-784.73	-116.51	0.00	0.00	0.00
3,100.00	21.13	252.87	2,952.25	-252.53	-819.18	-121.62	0.00	0.00	0.00
3,200.00	21.13	252.87	3,045.52	-263.15	-853.63	-126.74	0.00	0.00	0.00
3,300.00	21.13	252.87	3,138.80	-273.77	-888.08	-131.85	0.00	0.00	0.00
3,400.00	21.13	252.87	3,232.07	-284.39	-922.54	-136.97	0.00	0.00	0.00
3,500.00	21.13	252.87	3,325.35	-295.01	-956.99	-142.08	0.00	0.00	0.00
3,600.00	21.13	252.87	3,418.62	-305.63	-991.44	-147.20	0.00	0.00	0.00
3,700.00	21.13	252.87	3,511.90	-316.25	-1,025.89	-152.31	0.00	0.00	0.00
3,800.00	21.13	252.87	3,605.17	-326.87	-1,060.34	-157.43	0.00	0.00	0.00
3,900.00	21.13	252.87	3,698.45	-337.49	-1,094.79	-162.54	0.00	0.00	0.00
4,000.00	21.13	252.87	3,791.73	-348.11	-1,129.25	-167.66	0.00	0.00	0.00
4,100.00	21.13	252.87	3,885.00	-358.73	-1,163.70	-172.77	0.00	0.00	0.00
4,200.00	21.13	252.87	3,978.28	-369.35	-1,198.15	-177.89	0.00	0.00	0.00
4,300.00	21.13	252.87	4,071.55	-379.97	-1,232.60	-183.01	0.00	0.00	0.00
4,400.00	21.13	252.87	4,164.83	-390.59	-1,267.05	-188.12	0.00	0.00	0.00
4,500.00	21.13	252.87	4,258.10	-401.21	-1,301.50	-193.24	0.00	0.00	0.00
4,600.00	21.13	252.87	4,351.38	-411.83	-1,335.95	-198.35	0.00	0.00	0.00
4,700.00	21.13	252.87	4,444.65	-422.45	-1,370.41	-203.47	0.00	0.00	0.00

Database:	Casper District	Local Co-ordinate Reference:	Well Evans 4C-14-XR
Company:	Synergy Resources Corp.	TVD Reference:	GL 4940 & KB 20 @ 4960.00ft (PD 462)
Project:	Weld County, CO NAD 83	MD Reference:	GL 4940 & KB 20 @ 4960.00ft (PD 462)
Site:	Evans 7-26 Pad	North Reference:	True
Well:	Evans 4C-14-XR	Survey Calculation Method:	Minimum Curvature
Wellbore:	OH		
Design:	Plan #1		

Planned Survey									
Measured Depth (ft)	Inclination (°)	Azimuth (°)	Vertical Depth (ft)	+N/-S (ft)	+E/-W (ft)	Vertical Section (ft)	Dogleg Rate (°/100ft)	Build Rate (°/100ft)	Turn Rate (°/100ft)
4,800.00	21.13	252.87	4,537.93	-433.07	-1,404.86	-208.58	0.00	0.00	0.00
4,900.00	21.13	252.87	4,631.20	-443.69	-1,439.31	-213.70	0.00	0.00	0.00
5,000.00	21.13	252.87	4,724.48	-454.31	-1,473.76	-218.81	0.00	0.00	0.00
5,100.00	21.13	252.87	4,817.75	-464.93	-1,508.21	-223.93	0.00	0.00	0.00
5,200.00	21.13	252.87	4,911.03	-475.55	-1,542.66	-229.04	0.00	0.00	0.00
5,300.00	21.13	252.87	5,004.31	-486.17	-1,577.12	-234.16	0.00	0.00	0.00
5,400.00	21.13	252.87	5,097.58	-496.79	-1,611.57	-239.27	0.00	0.00	0.00
5,500.00	21.13	252.87	5,190.86	-507.41	-1,646.02	-244.39	0.00	0.00	0.00
5,600.00	21.13	252.87	5,284.13	-518.03	-1,680.47	-249.50	0.00	0.00	0.00
5,689.06	21.13	252.87	5,367.21	-527.49	-1,711.15	-254.06	0.00	0.00	0.00
Start Drop -2.00									
5,700.00	20.91	252.87	5,377.41	-528.65	-1,714.90	-254.61	2.00	-2.00	0.00
5,800.00	18.91	252.87	5,471.43	-538.68	-1,747.45	-259.45	2.00	-2.00	0.00
5,900.00	16.91	252.87	5,566.58	-547.74	-1,776.84	-263.81	2.00	-2.00	0.00
6,000.00	14.91	252.87	5,662.74	-555.81	-1,803.04	-267.70	2.00	-2.00	0.00
6,100.00	12.91	252.87	5,759.80	-562.90	-1,826.02	-271.11	2.00	-2.00	0.00
6,200.00	10.91	252.87	5,857.64	-568.98	-1,845.74	-274.04	2.00	-2.00	0.00
6,300.00	8.91	252.87	5,956.15	-574.05	-1,862.19	-276.48	2.00	-2.00	0.00
6,400.00	6.91	252.87	6,055.19	-578.10	-1,875.35	-278.43	2.00	-2.00	0.00
6,500.00	4.91	252.87	6,154.65	-581.14	-1,885.19	-279.90	2.00	-2.00	0.00
6,600.00	2.91	252.87	6,254.41	-583.15	-1,891.71	-280.86	2.00	-2.00	0.00
6,700.00	0.91	252.87	6,354.35	-584.13	-1,894.90	-281.34	2.00	-2.00	0.00
6,745.65	0.00	0.00	6,400.00	-584.24	-1,895.25	-281.39	2.00	-2.00	0.00
Start 478.13 hold at 6745.65 MD									
6,800.00	0.00	0.00	6,454.35	-584.24	-1,895.25	-281.39	0.00	0.00	0.00
6,900.00	0.00	0.00	6,554.35	-584.24	-1,895.25	-281.39	0.00	0.00	0.00
7,000.00	0.00	0.00	6,654.35	-584.24	-1,895.25	-281.39	0.00	0.00	0.00
7,100.00	0.00	0.00	6,754.35	-584.24	-1,895.25	-281.39	0.00	0.00	0.00
7,200.00	0.00	0.00	6,854.35	-584.24	-1,895.25	-281.39	0.00	0.00	0.00
7,223.78	0.00	0.00	6,878.13	-584.24	-1,895.25	-281.39	0.00	0.00	0.00
Start DLS 11.00 TFO 359.90									
7,300.00	8.38	359.90	6,954.08	-578.67	-1,895.26	-275.89	11.00	11.00	0.00
7,400.00	19.38	359.90	7,051.01	-554.71	-1,895.30	-252.22	11.00	11.00	0.00
7,500.00	30.38	359.90	7,141.59	-512.70	-1,895.38	-210.71	11.00	11.00	0.00
7,600.00	41.38	359.90	7,222.48	-454.17	-1,895.48	-152.88	11.00	11.00	0.00
7,700.00	52.38	359.90	7,290.72	-381.29	-1,895.61	-80.87	11.00	11.00	0.00
7,800.00	63.38	359.90	7,343.80	-296.72	-1,895.76	2.69	11.00	11.00	0.00
7,900.00	74.38	359.90	7,379.77	-203.58	-1,895.93	94.72	11.00	11.00	0.00
8,000.00	85.38	359.90	7,397.31	-105.29	-1,896.10	191.83	11.00	11.00	0.00
8,041.71	89.97	359.90	7,399.00	-63.63	-1,896.18	232.99	11.00	11.00	0.00
Start 12206.10 hold at 8041.70 MD									
8,100.00	89.97	359.90	7,399.03	-5.33	-1,896.28	290.59	0.00	0.00	0.00
8,200.00	89.97	359.90	7,399.08	94.67	-1,896.46	389.39	0.00	0.00	0.00
8,300.00	89.97	359.90	7,399.13	194.67	-1,896.64	488.20	0.00	0.00	0.00
8,400.00	89.97	359.90	7,399.18	294.67	-1,896.82	587.00	0.00	0.00	0.00
8,500.00	89.97	359.90	7,399.23	394.67	-1,897.00	685.80	0.00	0.00	0.00
8,600.00	89.97	359.90	7,399.28	494.67	-1,897.17	784.61	0.00	0.00	0.00
8,700.00	89.97	359.90	7,399.32	594.67	-1,897.35	883.41	0.00	0.00	0.00
8,800.00	89.97	359.90	7,399.37	694.67	-1,897.53	982.21	0.00	0.00	0.00
8,900.00	89.97	359.90	7,399.42	794.67	-1,897.71	1,081.02	0.00	0.00	0.00
9,000.00	89.97	359.90	7,399.47	894.67	-1,897.89	1,179.82	0.00	0.00	0.00
9,100.00	89.97	359.90	7,399.52	994.67	-1,898.07	1,278.62	0.00	0.00	0.00
9,200.00	89.97	359.90	7,399.57	1,094.67	-1,898.24	1,377.42	0.00	0.00	0.00
9,300.00	89.97	359.90	7,399.62	1,194.67	-1,898.42	1,476.23	0.00	0.00	0.00

Database:	Casper District	Local Co-ordinate Reference:	Well Evans 4C-14-XR
Company:	Synergy Resources Corp.	TVD Reference:	GL 4940 & KB 20 @ 4960.00ft (PD 462)
Project:	Weld County, CO NAD 83	MD Reference:	GL 4940 & KB 20 @ 4960.00ft (PD 462)
Site:	Evans 7-26 Pad	North Reference:	True
Well:	Evans 4C-14-XR	Survey Calculation Method:	Minimum Curvature
Wellbore:	OH		
Design:	Plan #1		

Planned Survey									
Measured Depth (ft)	Inclination (°)	Azimuth (°)	Vertical Depth (ft)	+N/-S (ft)	+E/-W (ft)	Vertical Section (ft)	Dogleg Rate (°/100ft)	Build Rate (°/100ft)	Turn Rate (°/100ft)
9,400.00	89.97	359.90	7,399.67	1,294.67	-1,898.60	1,575.03	0.00	0.00	0.00
9,500.00	89.97	359.90	7,399.72	1,394.67	-1,898.78	1,673.83	0.00	0.00	0.00
9,600.00	89.97	359.90	7,399.77	1,494.67	-1,898.96	1,772.64	0.00	0.00	0.00
9,700.00	89.97	359.90	7,399.82	1,594.67	-1,899.14	1,871.44	0.00	0.00	0.00
9,800.00	89.97	359.90	7,399.87	1,694.67	-1,899.31	1,970.24	0.00	0.00	0.00
9,900.00	89.97	359.90	7,399.91	1,794.67	-1,899.49	2,069.05	0.00	0.00	0.00
10,000.00	89.97	359.90	7,399.96	1,894.67	-1,899.67	2,167.85	0.00	0.00	0.00
10,100.00	89.97	359.90	7,400.01	1,994.67	-1,899.85	2,266.65	0.00	0.00	0.00
10,200.00	89.97	359.90	7,400.06	2,094.67	-1,900.03	2,365.46	0.00	0.00	0.00
10,300.00	89.97	359.90	7,400.11	2,194.67	-1,900.21	2,464.26	0.00	0.00	0.00
10,400.00	89.97	359.90	7,400.16	2,294.66	-1,900.38	2,563.06	0.00	0.00	0.00
10,500.00	89.97	359.90	7,400.21	2,394.66	-1,900.56	2,661.86	0.00	0.00	0.00
10,600.00	89.97	359.90	7,400.26	2,494.66	-1,900.74	2,760.67	0.00	0.00	0.00
10,700.00	89.97	359.90	7,400.31	2,594.66	-1,900.92	2,859.47	0.00	0.00	0.00
10,800.00	89.97	359.90	7,400.36	2,694.66	-1,901.10	2,958.27	0.00	0.00	0.00
10,900.00	89.97	359.90	7,400.41	2,794.66	-1,901.28	3,057.08	0.00	0.00	0.00
11,000.00	89.97	359.90	7,400.45	2,894.66	-1,901.45	3,155.88	0.00	0.00	0.00
11,100.00	89.97	359.90	7,400.50	2,994.66	-1,901.63	3,254.68	0.00	0.00	0.00
11,200.00	89.97	359.90	7,400.55	3,094.66	-1,901.81	3,353.49	0.00	0.00	0.00
11,300.00	89.97	359.90	7,400.60	3,194.66	-1,901.99	3,452.29	0.00	0.00	0.00
11,400.00	89.97	359.90	7,400.65	3,294.66	-1,902.17	3,551.09	0.00	0.00	0.00
11,500.00	89.97	359.90	7,400.70	3,394.66	-1,902.35	3,649.90	0.00	0.00	0.00
11,600.00	89.97	359.90	7,400.75	3,494.66	-1,902.52	3,748.70	0.00	0.00	0.00
11,700.00	89.97	359.90	7,400.80	3,594.66	-1,902.70	3,847.50	0.00	0.00	0.00
11,800.00	89.97	359.90	7,400.85	3,694.66	-1,902.88	3,946.30	0.00	0.00	0.00
11,900.00	89.97	359.90	7,400.90	3,794.66	-1,903.06	4,045.11	0.00	0.00	0.00
12,000.00	89.97	359.90	7,400.95	3,894.66	-1,903.24	4,143.91	0.00	0.00	0.00
12,100.00	89.97	359.90	7,401.00	3,994.66	-1,903.42	4,242.71	0.00	0.00	0.00
12,200.00	89.97	359.90	7,401.04	4,094.66	-1,903.59	4,341.52	0.00	0.00	0.00
12,300.00	89.97	359.90	7,401.09	4,194.66	-1,903.77	4,440.32	0.00	0.00	0.00
12,400.00	89.97	359.90	7,401.14	4,294.66	-1,903.95	4,539.12	0.00	0.00	0.00
12,500.00	89.97	359.90	7,401.19	4,394.66	-1,904.13	4,637.93	0.00	0.00	0.00
12,600.00	89.97	359.90	7,401.24	4,494.66	-1,904.31	4,736.73	0.00	0.00	0.00
12,700.00	89.97	359.90	7,401.29	4,594.66	-1,904.49	4,835.53	0.00	0.00	0.00
12,800.00	89.97	359.90	7,401.34	4,694.66	-1,904.66	4,934.33	0.00	0.00	0.00
12,900.00	89.97	359.90	7,401.39	4,794.66	-1,904.84	5,033.14	0.00	0.00	0.00
13,000.00	89.97	359.90	7,401.44	4,894.66	-1,905.02	5,131.94	0.00	0.00	0.00
13,100.00	89.97	359.90	7,401.49	4,994.66	-1,905.20	5,230.74	0.00	0.00	0.00
13,200.00	89.97	359.90	7,401.54	5,094.66	-1,905.38	5,329.55	0.00	0.00	0.00
13,300.00	89.97	359.90	7,401.59	5,194.66	-1,905.56	5,428.35	0.00	0.00	0.00
13,400.00	89.97	359.90	7,401.63	5,294.66	-1,905.74	5,527.15	0.00	0.00	0.00
13,500.00	89.97	359.90	7,401.68	5,394.66	-1,905.91	5,625.96	0.00	0.00	0.00
13,600.00	89.97	359.90	7,401.73	5,494.66	-1,906.09	5,724.76	0.00	0.00	0.00
13,700.00	89.97	359.90	7,401.78	5,594.66	-1,906.27	5,823.56	0.00	0.00	0.00
13,800.00	89.97	359.90	7,401.83	5,694.66	-1,906.45	5,922.37	0.00	0.00	0.00
13,900.00	89.97	359.90	7,401.88	5,794.66	-1,906.63	6,021.17	0.00	0.00	0.00
14,000.00	89.97	359.90	7,401.93	5,894.66	-1,906.81	6,119.97	0.00	0.00	0.00
14,100.00	89.97	359.90	7,401.98	5,994.66	-1,906.98	6,218.77	0.00	0.00	0.00
14,200.00	89.97	359.90	7,402.03	6,094.66	-1,907.16	6,317.58	0.00	0.00	0.00
14,300.00	89.97	359.90	7,402.08	6,194.66	-1,907.34	6,416.38	0.00	0.00	0.00
14,400.00	89.97	359.90	7,402.13	6,294.66	-1,907.52	6,515.18	0.00	0.00	0.00
14,500.00	89.97	359.90	7,402.18	6,394.66	-1,907.70	6,613.99	0.00	0.00	0.00
14,600.00	89.97	359.90	7,402.22	6,494.66	-1,907.88	6,712.79	0.00	0.00	0.00
14,700.00	89.97	359.90	7,402.27	6,594.66	-1,908.05	6,811.59	0.00	0.00	0.00

Database:	Casper District	Local Co-ordinate Reference:	Well Evans 4C-14-XR
Company:	Synergy Resources Corp.	TVD Reference:	GL 4940 & KB 20 @ 4960.00ft (PD 462)
Project:	Weld County, CO NAD 83	MD Reference:	GL 4940 & KB 20 @ 4960.00ft (PD 462)
Site:	Evans 7-26 Pad	North Reference:	True
Well:	Evans 4C-14-XR	Survey Calculation Method:	Minimum Curvature
Wellbore:	OH		
Design:	Plan #1		

Planned Survey									
Measured Depth (ft)	Inclination (°)	Azimuth (°)	Vertical Depth (ft)	+N/-S (ft)	+E/-W (ft)	Vertical Section (ft)	Dogleg Rate (°/100ft)	Build Rate (°/100ft)	Turn Rate (°/100ft)
14,800.00	89.97	359.90	7,402.32	6,694.66	-1,908.23	6,910.40	0.00	0.00	0.00
14,900.00	89.97	359.90	7,402.37	6,794.66	-1,908.41	7,009.20	0.00	0.00	0.00
15,000.00	89.97	359.90	7,402.42	6,894.66	-1,908.59	7,108.00	0.00	0.00	0.00
15,100.00	89.97	359.90	7,402.47	6,994.66	-1,908.77	7,206.81	0.00	0.00	0.00
15,200.00	89.97	359.90	7,402.52	7,094.66	-1,908.95	7,305.61	0.00	0.00	0.00
15,300.00	89.97	359.90	7,402.57	7,194.66	-1,909.12	7,404.41	0.00	0.00	0.00
15,400.00	89.97	359.90	7,402.62	7,294.66	-1,909.30	7,503.21	0.00	0.00	0.00
15,500.00	89.97	359.90	7,402.67	7,394.66	-1,909.48	7,602.02	0.00	0.00	0.00
15,600.00	89.97	359.90	7,402.72	7,494.66	-1,909.66	7,700.82	0.00	0.00	0.00
15,700.00	89.97	359.90	7,402.76	7,594.66	-1,909.84	7,799.62	0.00	0.00	0.00
15,800.00	89.97	359.90	7,402.81	7,694.66	-1,910.02	7,898.43	0.00	0.00	0.00
15,900.00	89.97	359.90	7,402.86	7,794.66	-1,910.19	7,997.23	0.00	0.00	0.00
16,000.00	89.97	359.90	7,402.91	7,894.66	-1,910.37	8,096.03	0.00	0.00	0.00
16,100.00	89.97	359.90	7,402.96	7,994.66	-1,910.55	8,194.84	0.00	0.00	0.00
16,200.00	89.97	359.90	7,403.01	8,094.66	-1,910.73	8,293.64	0.00	0.00	0.00
16,300.00	89.97	359.90	7,403.06	8,194.66	-1,910.91	8,392.44	0.00	0.00	0.00
16,400.00	89.97	359.90	7,403.11	8,294.65	-1,911.09	8,491.24	0.00	0.00	0.00
16,500.00	89.97	359.90	7,403.16	8,394.65	-1,911.26	8,590.05	0.00	0.00	0.00
16,600.00	89.97	359.90	7,403.21	8,494.65	-1,911.44	8,688.85	0.00	0.00	0.00
16,700.00	89.97	359.90	7,403.26	8,594.65	-1,911.62	8,787.65	0.00	0.00	0.00
16,800.00	89.97	359.90	7,403.31	8,694.65	-1,911.80	8,886.46	0.00	0.00	0.00
16,900.00	89.97	359.90	7,403.35	8,794.65	-1,911.98	8,985.26	0.00	0.00	0.00
17,000.00	89.97	359.90	7,403.40	8,894.65	-1,912.16	9,084.06	0.00	0.00	0.00
17,100.00	89.97	359.90	7,403.45	8,994.65	-1,912.33	9,182.87	0.00	0.00	0.00
17,200.00	89.97	359.90	7,403.50	9,094.65	-1,912.51	9,281.67	0.00	0.00	0.00
17,300.00	89.97	359.90	7,403.55	9,194.65	-1,912.69	9,380.47	0.00	0.00	0.00
17,400.00	89.97	359.90	7,403.60	9,294.65	-1,912.87	9,479.28	0.00	0.00	0.00
17,500.00	89.97	359.90	7,403.65	9,394.65	-1,913.05	9,578.08	0.00	0.00	0.00
17,600.00	89.97	359.90	7,403.70	9,494.65	-1,913.23	9,676.88	0.00	0.00	0.00
17,700.00	89.97	359.90	7,403.75	9,594.65	-1,913.40	9,775.68	0.00	0.00	0.00
17,800.00	89.97	359.90	7,403.80	9,694.65	-1,913.58	9,874.49	0.00	0.00	0.00
17,900.00	89.97	359.90	7,403.85	9,794.65	-1,913.76	9,973.29	0.00	0.00	0.00
18,000.00	89.97	359.90	7,403.90	9,894.65	-1,913.94	10,072.09	0.00	0.00	0.00
18,100.00	89.97	359.90	7,403.94	9,994.65	-1,914.12	10,170.90	0.00	0.00	0.00
18,200.00	89.97	359.90	7,403.99	10,094.65	-1,914.30	10,269.70	0.00	0.00	0.00
18,300.00	89.97	359.90	7,404.04	10,194.65	-1,914.47	10,368.50	0.00	0.00	0.00
18,400.00	89.97	359.90	7,404.09	10,294.65	-1,914.65	10,467.31	0.00	0.00	0.00
18,500.00	89.97	359.90	7,404.14	10,394.65	-1,914.83	10,566.11	0.00	0.00	0.00
18,600.00	89.97	359.90	7,404.19	10,494.65	-1,915.01	10,664.91	0.00	0.00	0.00
18,700.00	89.97	359.90	7,404.24	10,594.65	-1,915.19	10,763.72	0.00	0.00	0.00
18,800.00	89.97	359.90	7,404.29	10,694.65	-1,915.37	10,862.52	0.00	0.00	0.00
18,900.00	89.97	359.90	7,404.34	10,794.65	-1,915.54	10,961.32	0.00	0.00	0.00
19,000.00	89.97	359.90	7,404.39	10,894.65	-1,915.72	11,060.12	0.00	0.00	0.00
19,100.00	89.97	359.90	7,404.44	10,994.65	-1,915.90	11,158.93	0.00	0.00	0.00
19,200.00	89.97	359.90	7,404.49	11,094.65	-1,916.08	11,257.73	0.00	0.00	0.00
19,300.00	89.97	359.90	7,404.53	11,194.65	-1,916.26	11,356.53	0.00	0.00	0.00
19,400.00	89.97	359.90	7,404.58	11,294.65	-1,916.44	11,455.34	0.00	0.00	0.00
19,500.00	89.97	359.90	7,404.63	11,394.65	-1,916.61	11,554.14	0.00	0.00	0.00
19,600.00	89.97	359.90	7,404.68	11,494.65	-1,916.79	11,652.94	0.00	0.00	0.00
19,700.00	89.97	359.90	7,404.73	11,594.65	-1,916.97	11,751.75	0.00	0.00	0.00
19,800.00	89.97	359.90	7,404.78	11,694.65	-1,917.15	11,850.55	0.00	0.00	0.00
19,900.00	89.97	359.90	7,404.83	11,794.65	-1,917.33	11,949.35	0.00	0.00	0.00
20,000.00	89.97	359.90	7,404.88	11,894.65	-1,917.51	12,048.15	0.00	0.00	0.00
20,100.00	89.97	359.90	7,404.93	11,994.65	-1,917.68	12,146.96	0.00	0.00	0.00

Database:	Casper District	Local Co-ordinate Reference:	Well Evans 4C-14-XR
Company:	Synergy Resources Corp.	TVD Reference:	GL 4940 & KB 20 @ 4960.00ft (PD 462)
Project:	Weld County, CO NAD 83	MD Reference:	GL 4940 & KB 20 @ 4960.00ft (PD 462)
Site:	Evans 7-26 Pad	North Reference:	True
Well:	Evans 4C-14-XR	Survey Calculation Method:	Minimum Curvature
Wellbore:	OH		
Design:	Plan #1		

Planned Survey									
Measured Depth (ft)	Inclination (°)	Azimuth (°)	Vertical Depth (ft)	+N/-S (ft)	+E/-W (ft)	Vertical Section (ft)	Dogleg Rate (°/100ft)	Build Rate (°/100ft)	Turn Rate (°/100ft)
20,200.00	89.97	359.90	7,404.98	12,094.65	-1,917.86	12,245.76	0.00	0.00	0.00
20,247.81	89.97	359.90	7,405.00	12,142.46	-1,917.95	12,293.00	0.00	0.00	0.00
TD at 20247.81 - 4C-14-XR(460 FNL 1049 FWL)PBHL									

Design Targets									
Target Name	Dip Angle (°)	Dip Dir. (°)	TVD (ft)	+N/-S (ft)	+E/-W (ft)	Northing (usft)	Easting (usft)	Latitude	Longitude
4C-14-XR(460 FNL 1049) - hit/miss target - Shape - Point	0.00	0.00	7,405.00	12,142.46	-1,917.95	1,391,455.21	3,208,161.17	40.4055380	-104.7525210

Casing Points					
Measured Depth (ft)	Vertical Depth (ft)	Name	Casing Diameter (in)	Hole Diameter (in)	
1,757.47	1,700.00	9 5/8"	9.625	13.500	

Plan Annotations				
Measured Depth (ft)	Vertical Depth (ft)	Local Coordinates		Comment
		+N/-S (ft)	+E/-W (ft)	
200.00	200.00	0.00	0.00	Start Build 2.00
1,256.59	1,232.79	-56.75	-184.10	Start 4432.48 hold at 1256.59 MD
5,689.06	5,367.21	-527.49	-1,711.15	Start Drop -2.00
6,745.65	6,400.00	-584.24	-1,895.25	Start 478.13 hold at 6745.65 MD
7,223.78	6,878.13	-584.24	-1,895.25	Start DLS 11.00 TFO 359.90
8,041.71	7,399.00	-63.63	-1,896.18	Start 12206.10 hold at 8041.70 MD
20,247.81	7,405.00	12,142.46	-1,917.95	TD at 20247.81