



PROJECT DETAILS: Weld County, CO NAD 83

Geodetic System: US State Plane 1983  
Datum: North American Datum 1983  
Ellipsoid: GRS 1980  
Zone: Colorado Northern Zone  
System Datum: Mean Sea Level  
Local North: True

Project: Weld County, CO NAD 83  
Site: Evans 7-26 Pad  
Well: Evans 4N-14A-XR  
Wellbore: OH  
Design: Plan #1



Azinuths to True North  
Magnetic North: 8.48°



Magnetic Field  
Strength: 52529.3nT  
Dip Angle: 66.93°  
Date: 3/9/2016  
Model: BGGM2015

#### SECTION DETAILS

MD	Inc	Azi	TVD	+N/-S	+E/-W	Dleg	TFace	VSect
0.00	0.00	0.00	0.00	0.00	0.00	0.00	0.00	0.00
300.00	0.00	0.00	300.00	0.00	0.00	0.00	0.00	0.00
1465.10	23.30	252.32	1433.24	-70.98	-222.63	2.00	252.32	-35.32
5312.43	23.30	252.32	4966.76	-533.31	-1672.62	0.00	0.00	-265.37
6477.52	0.00	0.00	6100.00	-604.29	-1895.25	2.00	180.00	-300.69
7010.65	0.00	0.00	6633.13	-604.29	-1895.25	0.00	0.00	-300.69
7830.71	90.21	359.90	7154.00	-81.54	-1896.18	11.00	359.90	215.78
20034.77	90.21	359.90	7110.00	12122.42	-1917.95	0.00	0.00	12273.21

#### DESIGN TARGET DETAILS

Name	TVD	+N/-S	+E/-W	Northing	Easting	Latitude	Longitude	Shape
PBHL	7110.00	12122.42	-1917.95	1391455.21	3208161.17	40.4055380	-104.7525210	Circle (Radius: 0.00)
- plan hits target center								

#### WELL DETAILS: Evans 4N-14A-XR

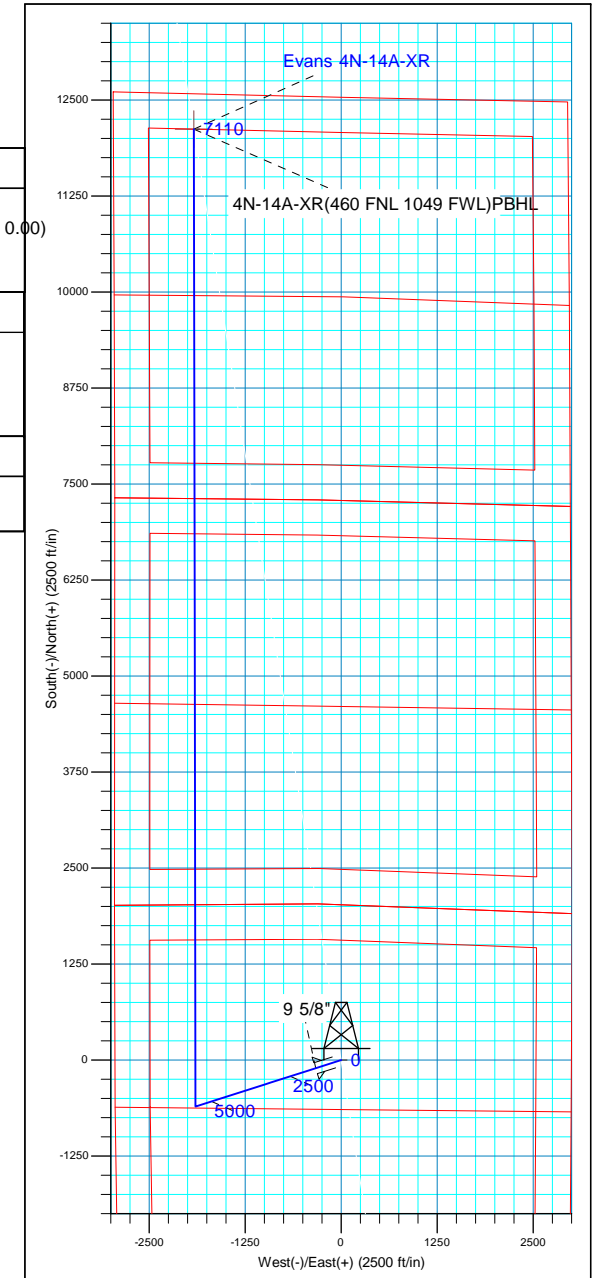
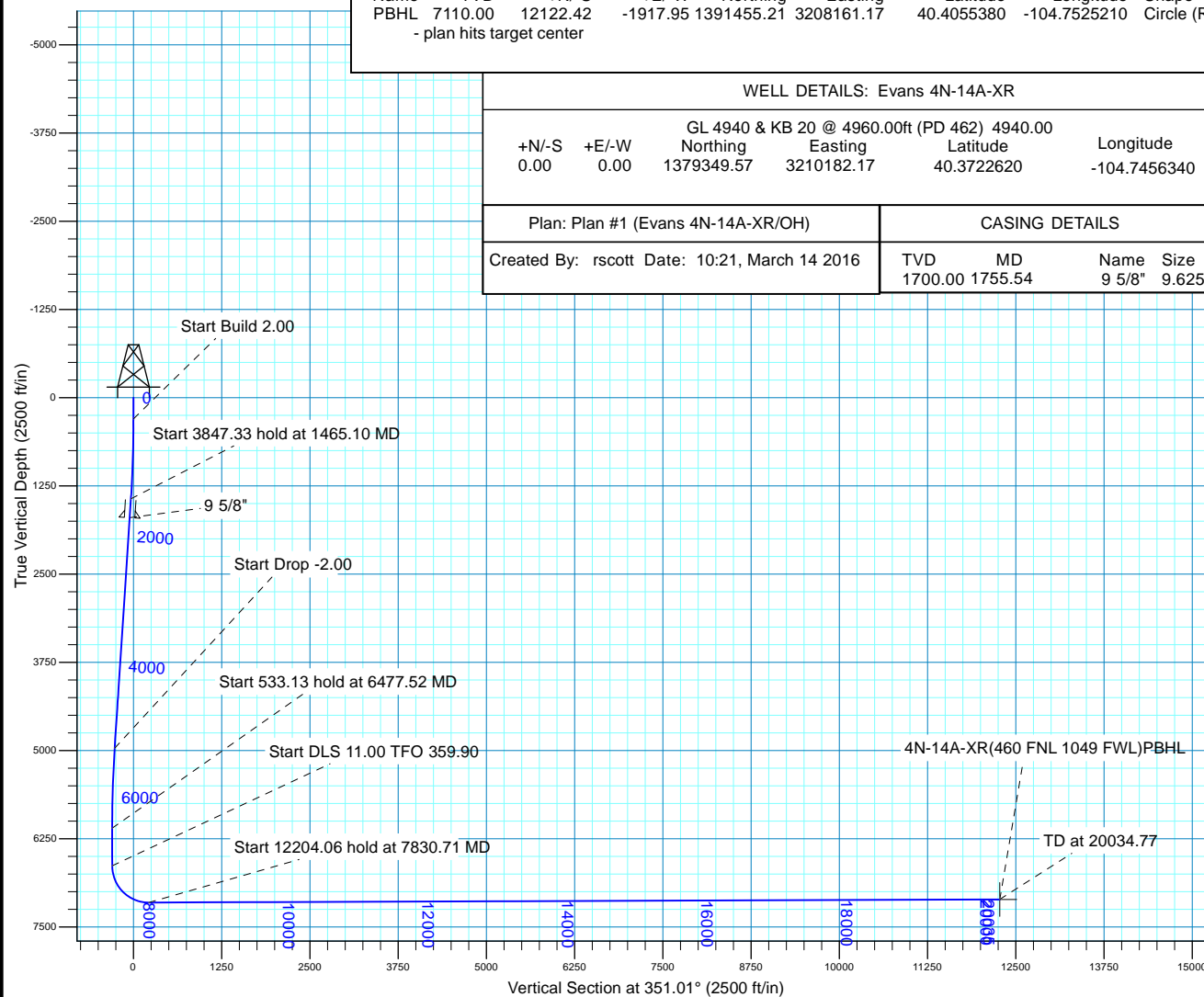
		GL 4940 & KB 20 @ 4960.00ft (PD 462)		4940.00		
+N/-S	+E/-W	Northing	Easting	Latitude	Longitude	
0.00	0.00	1379349.57	3210182.17	40.3722620	-104.7456340	

Plan: Plan #1 (Evans 4N-14A-XR/OH)

#### CASING DETAILS

Created By: rscott Date: 10:21, March 14 2016

TVD	MD	Name	Size
1700.00	1755.54	9 5/8"	9.625





## **Synergy Resources Corp.**

**Weld County, CO NAD 83**

**Evans 7-26 Pad**

**Evans 4N-14A-XR**

**OH**

**Plan: Plan #1**

## **Standard Planning Report**

**13 March, 2016**



<b>Database:</b>	Casper District	<b>Local Co-ordinate Reference:</b>	Well Evans 4N-14A-XR
<b>Company:</b>	Synergy Resources Corp.	<b>TVD Reference:</b>	GL 4940 & KB 20 @ 4960.00ft (PD 462)
<b>Project:</b>	Weld County, CO NAD 83	<b>MD Reference:</b>	GL 4940 & KB 20 @ 4960.00ft (PD 462)
<b>Site:</b>	Evans 7-26 Pad	<b>North Reference:</b>	True
<b>Well:</b>	Evans 4N-14A-XR	<b>Survey Calculation Method:</b>	Minimum Curvature
<b>Wellbore:</b>	OH		
<b>Design:</b>	Plan #1		

<b>Project</b>	Weld County, CO NAD 83		
<b>Map System:</b>	US State Plane 1983	<b>System Datum:</b>	Mean Sea Level
<b>Geo Datum:</b>	North American Datum 1983		
<b>Map Zone:</b>	Colorado Northern Zone		

<b>Site</b>	Evans 7-26 Pad, SECTION 26 T5N R66W			
<b>Site Position:</b>		<b>Northing:</b>	1,379,289.48 usft	<b>Latitude:</b> 40.3720970
<b>From:</b>	Lat/Long	<b>Easting:</b>	3,210,182.68 usft	<b>Longitude:</b> -104.7456340
<b>Position Uncertainty:</b>	3.28 ft	<b>Slot Radius:</b>	13.200 in	<b>Grid Convergence:</b> 0.49 °

<b>Well</b>	Evans 4N-14A-XR, 2022 FNL 2998 FEL			
<b>Well Position</b>	<b>+N/-S</b>	60.10 ft	<b>Northing:</b>	1,379,349.57 usft
	<b>+E/-W</b>	0.00 ft	<b>Easting:</b>	3,210,182.17 usft
<b>Position Uncertainty</b>		3.28 ft	<b>Wellhead Elevation:</b>	0.00 ft
			<b>Ground Level:</b>	4,940.00 ft

<b>Wellbore</b>	OH				
<b>Magnetics</b>	<b>Model Name</b>	<b>Sample Date</b>	<b>Declination (°)</b>	<b>Dip Angle (°)</b>	<b>Field Strength (nT)</b>
	BGGM2015	3/9/2016	8.48	66.93	52,529

<b>Design</b>	Plan #1			
<b>Audit Notes:</b>				
<b>Version:</b>	<b>Phase:</b>	PLAN	<b>Tie On Depth:</b>	0.00
<b>Vertical Section:</b>	<b>Depth From (TVD) (ft)</b>	<b>+N/-S (ft)</b>	<b>+E/-W (ft)</b>	<b>Direction (°)</b>
	0.00	0.00	0.00	351.01

<b>Plan Sections</b>										
Measured Depth (ft)	Inclination (°)	Azimuth (°)	Vertical Depth (ft)	+N/-S (ft)	+E/-W (ft)	Dogleg Rate (°/100ft)	Build Rate (°/100ft)	Turn Rate (°/100ft)	TFO (°)	Target
0.00	0.00	0.00	0.00	0.00	0.00	0.00	0.00	0.00	0.00	
300.00	0.00	0.00	300.00	0.00	0.00	0.00	0.00	0.00	0.00	
1,465.10	23.30	252.32	1,433.24	-70.98	-222.63	2.00	2.00	0.00	252.32	
5,312.43	23.30	252.32	4,966.76	-533.31	-1,672.62	0.00	0.00	0.00	0.00	
6,477.52	0.00	0.00	6,100.00	-604.29	-1,895.25	2.00	-2.00	0.00	180.00	
7,010.65	0.00	0.00	6,633.13	-604.29	-1,895.25	0.00	0.00	0.00	0.00	
7,830.71	90.21	359.90	7,154.00	-81.54	-1,896.18	11.00	11.00	-0.01	359.90	
20,034.77	90.21	359.90	7,110.00	12,122.42	-1,917.95	0.00	0.00	0.00	0.00	4N-14A-XR(460 FNL)

<b>Database:</b>	Casper District	<b>Local Co-ordinate Reference:</b>	Well Evans 4N-14A-XR
<b>Company:</b>	Synergy Resources Corp.	<b>TVD Reference:</b>	GL 4940 & KB 20 @ 4960.00ft (PD 462)
<b>Project:</b>	Weld County, CO NAD 83	<b>MD Reference:</b>	GL 4940 & KB 20 @ 4960.00ft (PD 462)
<b>Site:</b>	Evans 7-26 Pad	<b>North Reference:</b>	True
<b>Well:</b>	Evans 4N-14A-XR	<b>Survey Calculation Method:</b>	Minimum Curvature
<b>Wellbore:</b>	OH		
<b>Design:</b>	Plan #1		

Planned Survey									
Measured Depth (ft)	Inclination (°)	Azimuth (°)	Vertical Depth (ft)	+N/-S (ft)	+E/-W (ft)	Vertical Section (ft)	Dogleg Rate (°/100ft)	Build Rate (°/100ft)	Turn Rate (°/100ft)
0.00	0.00	0.00	0.00	0.00	0.00	0.00	0.00	0.00	0.00
100.00	0.00	0.00	100.00	0.00	0.00	0.00	0.00	0.00	0.00
200.00	0.00	0.00	200.00	0.00	0.00	0.00	0.00	0.00	0.00
300.00	0.00	0.00	300.00	0.00	0.00	0.00	0.00	0.00	0.00
<b>Start Build 2.00</b>									
400.00	2.00	252.32	399.98	-0.53	-1.66	-0.26	2.00	2.00	0.00
500.00	4.00	252.32	499.84	-2.12	-6.65	-1.05	2.00	2.00	0.00
600.00	6.00	252.32	599.45	-4.77	-14.95	-2.37	2.00	2.00	0.00
700.00	8.00	252.32	698.70	-8.47	-26.56	-4.21	2.00	2.00	0.00
800.00	10.00	252.32	797.47	-13.22	-41.47	-6.58	2.00	2.00	0.00
900.00	12.00	252.32	895.62	-19.02	-59.64	-9.46	2.00	2.00	0.00
1,000.00	14.00	252.32	993.06	-25.85	-81.08	-12.86	2.00	2.00	0.00
1,100.00	16.00	252.32	1,089.64	-33.71	-105.73	-16.78	2.00	2.00	0.00
1,200.00	18.00	252.32	1,185.27	-42.59	-133.59	-21.19	2.00	2.00	0.00
1,300.00	20.00	252.32	1,279.82	-52.48	-164.60	-26.12	2.00	2.00	0.00
1,400.00	22.00	252.32	1,373.17	-63.37	-198.74	-31.53	2.00	2.00	0.00
1,465.10	23.30	252.32	1,433.24	-70.98	-222.63	-35.32	2.00	2.00	0.00
<b>Start 3847.33 hold at 1465.10 MD</b>									
1,500.00	23.30	252.32	1,465.30	-75.18	-235.78	-37.41	0.00	0.00	0.00
1,600.00	23.30	252.32	1,557.14	-87.20	-273.47	-43.39	0.00	0.00	0.00
1,700.00	23.30	252.32	1,648.99	-99.21	-311.16	-49.37	0.00	0.00	0.00
1,755.54	23.30	252.32	1,700.00	-105.89	-332.09	-52.69	0.00	0.00	0.00
<b>9 5/8"</b>									
1,800.00	23.30	252.32	1,740.83	-111.23	-348.85	-55.35	0.00	0.00	0.00
1,900.00	23.30	252.32	1,832.67	-123.25	-386.54	-61.33	0.00	0.00	0.00
2,000.00	23.30	252.32	1,924.52	-135.26	-424.23	-67.31	0.00	0.00	0.00
2,100.00	23.30	252.32	2,016.36	-147.28	-461.91	-73.29	0.00	0.00	0.00
2,200.00	23.30	252.32	2,108.20	-159.30	-499.60	-79.26	0.00	0.00	0.00
2,300.00	23.30	252.32	2,200.05	-171.31	-537.29	-85.24	0.00	0.00	0.00
2,400.00	23.30	252.32	2,291.89	-183.33	-574.98	-91.22	0.00	0.00	0.00
2,500.00	23.30	252.32	2,383.73	-195.35	-612.67	-97.20	0.00	0.00	0.00
2,600.00	23.30	252.32	2,475.58	-207.36	-650.35	-103.18	0.00	0.00	0.00
2,700.00	23.30	252.32	2,567.42	-219.38	-688.04	-109.16	0.00	0.00	0.00
2,800.00	23.30	252.32	2,659.26	-231.40	-725.73	-115.14	0.00	0.00	0.00
2,900.00	23.30	252.32	2,751.11	-243.41	-763.42	-121.12	0.00	0.00	0.00
3,000.00	23.30	252.32	2,842.95	-255.43	-801.11	-127.10	0.00	0.00	0.00
3,100.00	23.30	252.32	2,934.79	-267.45	-838.80	-133.08	0.00	0.00	0.00
3,200.00	23.30	252.32	3,026.64	-279.46	-876.48	-139.06	0.00	0.00	0.00
3,300.00	23.30	252.32	3,118.48	-291.48	-914.17	-145.04	0.00	0.00	0.00
3,400.00	23.30	252.32	3,210.32	-303.50	-951.86	-151.02	0.00	0.00	0.00
3,500.00	23.30	252.32	3,302.17	-315.51	-989.55	-157.00	0.00	0.00	0.00
3,600.00	23.30	252.32	3,394.01	-327.53	-1,027.24	-162.98	0.00	0.00	0.00
3,700.00	23.30	252.32	3,485.85	-339.55	-1,064.93	-168.96	0.00	0.00	0.00
3,800.00	23.30	252.32	3,577.70	-351.56	-1,102.61	-174.94	0.00	0.00	0.00
3,900.00	23.30	252.32	3,669.54	-363.58	-1,140.30	-180.92	0.00	0.00	0.00
4,000.00	23.30	252.32	3,761.38	-375.60	-1,177.99	-186.90	0.00	0.00	0.00
4,100.00	23.30	252.32	3,853.23	-387.61	-1,215.68	-192.87	0.00	0.00	0.00
4,200.00	23.30	252.32	3,945.07	-399.63	-1,253.37	-198.85	0.00	0.00	0.00
4,300.00	23.30	252.32	4,036.91	-411.65	-1,291.06	-204.83	0.00	0.00	0.00
4,400.00	23.30	252.32	4,128.76	-423.66	-1,328.74	-210.81	0.00	0.00	0.00
4,500.00	23.30	252.32	4,220.60	-435.68	-1,366.43	-216.79	0.00	0.00	0.00
4,600.00	23.30	252.32	4,312.44	-447.70	-1,404.12	-222.77	0.00	0.00	0.00
4,700.00	23.30	252.32	4,404.29	-459.71	-1,441.81	-228.75	0.00	0.00	0.00

<b>Database:</b>	Casper District	<b>Local Co-ordinate Reference:</b>	Well Evans 4N-14A-XR
<b>Company:</b>	Synergy Resources Corp.	<b>TVD Reference:</b>	GL 4940 & KB 20 @ 4960.00ft (PD 462)
<b>Project:</b>	Weld County, CO NAD 83	<b>MD Reference:</b>	GL 4940 & KB 20 @ 4960.00ft (PD 462)
<b>Site:</b>	Evans 7-26 Pad	<b>North Reference:</b>	True
<b>Well:</b>	Evans 4N-14A-XR	<b>Survey Calculation Method:</b>	Minimum Curvature
<b>Wellbore:</b>	OH		
<b>Design:</b>	Plan #1		

Planned Survey									
Measured Depth (ft)	Inclination (°)	Azimuth (°)	Vertical Depth (ft)	+N/-S (ft)	+E/-W (ft)	Vertical Section (ft)	Dogleg Rate (°/100ft)	Build Rate (°/100ft)	Turn Rate (°/100ft)
4,800.00	23.30	252.32	4,496.13	-471.73	-1,479.50	-234.73	0.00	0.00	0.00
4,900.00	23.30	252.32	4,587.97	-483.75	-1,517.18	-240.71	0.00	0.00	0.00
5,000.00	23.30	252.32	4,679.82	-495.76	-1,554.87	-246.69	0.00	0.00	0.00
5,100.00	23.30	252.32	4,771.66	-507.78	-1,592.56	-252.67	0.00	0.00	0.00
5,200.00	23.30	252.32	4,863.50	-519.80	-1,630.25	-258.65	0.00	0.00	0.00
5,300.00	23.30	252.32	4,955.35	-531.81	-1,667.94	-264.63	0.00	0.00	0.00
5,312.43	23.30	252.32	4,966.76	-533.31	-1,672.62	-265.37	0.00	0.00	0.00
<b>Start Drop -2.00</b>									
5,400.00	21.55	252.32	5,047.71	-543.45	-1,704.45	-270.42	2.00	-2.00	0.00
5,500.00	19.55	252.32	5,141.34	-554.12	-1,737.89	-275.73	2.00	-2.00	0.00
5,600.00	17.55	252.32	5,236.14	-563.78	-1,768.20	-280.54	2.00	-2.00	0.00
5,700.00	15.55	252.32	5,331.99	-572.43	-1,795.34	-284.84	2.00	-2.00	0.00
5,800.00	13.55	252.32	5,428.78	-580.07	-1,819.27	-288.64	2.00	-2.00	0.00
5,900.00	11.55	252.32	5,526.38	-586.67	-1,839.98	-291.92	2.00	-2.00	0.00
6,000.00	9.55	252.32	5,624.69	-592.23	-1,857.42	-294.69	2.00	-2.00	0.00
6,100.00	7.55	252.32	5,723.57	-596.74	-1,871.58	-296.94	2.00	-2.00	0.00
6,200.00	5.55	252.32	5,822.91	-600.21	-1,882.45	-298.66	2.00	-2.00	0.00
6,300.00	3.55	252.32	5,922.59	-602.62	-1,890.01	-299.86	2.00	-2.00	0.00
6,400.00	1.55	252.32	6,022.49	-603.97	-1,894.25	-300.53	2.00	-2.00	0.00
6,477.52	0.00	0.00	6,100.00	-604.29	-1,895.25	-300.69	2.00	-2.00	0.00
<b>Start 533.13 hold at 6477.52 MD</b>									
6,500.00	0.00	0.00	6,122.48	-604.29	-1,895.25	-300.69	0.00	0.00	0.00
6,600.00	0.00	0.00	6,222.48	-604.29	-1,895.25	-300.69	0.00	0.00	0.00
6,700.00	0.00	0.00	6,322.48	-604.29	-1,895.25	-300.69	0.00	0.00	0.00
6,800.00	0.00	0.00	6,422.48	-604.29	-1,895.25	-300.69	0.00	0.00	0.00
6,900.00	0.00	0.00	6,522.48	-604.29	-1,895.25	-300.69	0.00	0.00	0.00
7,000.00	0.00	0.00	6,622.48	-604.29	-1,895.25	-300.69	0.00	0.00	0.00
7,010.65	0.00	0.00	6,633.13	-604.29	-1,895.25	-300.69	0.00	0.00	0.00
<b>Start DLS 11.00 TFO 359.90</b>									
7,100.00	9.83	359.90	6,722.04	-596.65	-1,895.26	-293.14	11.00	11.00	0.00
7,200.00	20.83	359.90	6,818.34	-570.25	-1,895.31	-267.06	11.00	11.00	0.00
7,300.00	31.83	359.90	6,907.82	-525.97	-1,895.39	-223.31	11.00	11.00	0.00
7,400.00	42.83	359.90	6,987.22	-465.42	-1,895.50	-163.49	11.00	11.00	0.00
7,500.00	53.83	359.90	7,053.60	-390.84	-1,895.63	-89.81	11.00	11.00	0.00
7,600.00	64.83	359.90	7,104.54	-304.96	-1,895.78	-4.96	11.00	11.00	0.00
7,700.00	75.83	359.90	7,138.15	-210.94	-1,895.95	87.93	11.00	11.00	0.00
7,800.00	86.83	359.90	7,153.20	-112.24	-1,896.13	185.45	11.00	11.00	0.00
7,830.71	90.21	359.90	7,154.00	-81.54	-1,896.18	215.78	11.00	11.00	0.00
<b>Start 12204.06 hold at 7830.71 MD</b>									
7,900.00	90.21	359.90	7,153.75	-12.25	-1,896.31	284.23	0.00	0.00	0.00
8,000.00	90.21	359.90	7,153.39	87.75	-1,896.48	383.03	0.00	0.00	0.00
8,100.00	90.21	359.90	7,153.03	187.74	-1,896.66	481.83	0.00	0.00	0.00
8,200.00	90.21	359.90	7,152.67	287.74	-1,896.84	580.63	0.00	0.00	0.00
8,300.00	90.21	359.90	7,152.31	387.74	-1,897.02	679.43	0.00	0.00	0.00
8,400.00	90.21	359.90	7,151.95	487.74	-1,897.20	778.23	0.00	0.00	0.00
8,500.00	90.21	359.90	7,151.58	587.74	-1,897.38	877.03	0.00	0.00	0.00
8,600.00	90.21	359.90	7,151.22	687.74	-1,897.55	975.82	0.00	0.00	0.00
8,700.00	90.21	359.90	7,150.86	787.74	-1,897.73	1,074.62	0.00	0.00	0.00
8,800.00	90.21	359.90	7,150.50	887.74	-1,897.91	1,173.42	0.00	0.00	0.00
8,900.00	90.21	359.90	7,150.14	987.74	-1,898.09	1,272.22	0.00	0.00	0.00
9,000.00	90.21	359.90	7,149.78	1,087.74	-1,898.27	1,371.02	0.00	0.00	0.00
9,100.00	90.21	359.90	7,149.42	1,187.74	-1,898.45	1,469.82	0.00	0.00	0.00
9,200.00	90.21	359.90	7,149.06	1,287.74	-1,898.62	1,568.61	0.00	0.00	0.00
9,300.00	90.21	359.90	7,148.70	1,387.73	-1,898.80	1,667.41	0.00	0.00	0.00

<b>Database:</b>	Casper District	<b>Local Co-ordinate Reference:</b>	Well Evans 4N-14A-XR
<b>Company:</b>	Synergy Resources Corp.	<b>TVD Reference:</b>	GL 4940 & KB 20 @ 4960.00ft (PD 462)
<b>Project:</b>	Weld County, CO NAD 83	<b>MD Reference:</b>	GL 4940 & KB 20 @ 4960.00ft (PD 462)
<b>Site:</b>	Evans 7-26 Pad	<b>North Reference:</b>	True
<b>Well:</b>	Evans 4N-14A-XR	<b>Survey Calculation Method:</b>	Minimum Curvature
<b>Wellbore:</b>	OH		
<b>Design:</b>	Plan #1		

Planned Survey									
Measured Depth (ft)	Inclination (°)	Azimuth (°)	Vertical Depth (ft)	+N/-S (ft)	+E/-W (ft)	Vertical Section (ft)	Dogleg Rate (°/100ft)	Build Rate (°/100ft)	Turn Rate (°/100ft)
9,400.00	90.21	359.90	7,148.34	1,487.73	-1,898.98	1,766.21	0.00	0.00	0.00
9,500.00	90.21	359.90	7,147.98	1,587.73	-1,899.16	1,865.01	0.00	0.00	0.00
9,600.00	90.21	359.90	7,147.62	1,687.73	-1,899.34	1,963.81	0.00	0.00	0.00
9,700.00	90.21	359.90	7,147.26	1,787.73	-1,899.52	2,062.61	0.00	0.00	0.00
9,800.00	90.21	359.90	7,146.90	1,887.73	-1,899.69	2,161.41	0.00	0.00	0.00
9,900.00	90.21	359.90	7,146.54	1,987.73	-1,899.87	2,260.20	0.00	0.00	0.00
10,000.00	90.21	359.90	7,146.18	2,087.73	-1,900.05	2,359.00	0.00	0.00	0.00
10,100.00	90.21	359.90	7,145.82	2,187.73	-1,900.23	2,457.80	0.00	0.00	0.00
10,200.00	90.21	359.90	7,145.46	2,287.73	-1,900.41	2,556.60	0.00	0.00	0.00
10,300.00	90.21	359.90	7,145.10	2,387.73	-1,900.59	2,655.40	0.00	0.00	0.00
10,400.00	90.21	359.90	7,144.73	2,487.73	-1,900.76	2,754.20	0.00	0.00	0.00
10,500.00	90.21	359.90	7,144.37	2,587.73	-1,900.94	2,853.00	0.00	0.00	0.00
10,600.00	90.21	359.90	7,144.01	2,687.72	-1,901.12	2,951.79	0.00	0.00	0.00
10,700.00	90.21	359.90	7,143.65	2,787.72	-1,901.30	3,050.59	0.00	0.00	0.00
10,800.00	90.21	359.90	7,143.29	2,887.72	-1,901.48	3,149.39	0.00	0.00	0.00
10,900.00	90.21	359.90	7,142.93	2,987.72	-1,901.66	3,248.19	0.00	0.00	0.00
11,000.00	90.21	359.90	7,142.57	3,087.72	-1,901.83	3,346.99	0.00	0.00	0.00
11,100.00	90.21	359.90	7,142.21	3,187.72	-1,902.01	3,445.79	0.00	0.00	0.00
11,200.00	90.21	359.90	7,141.85	3,287.72	-1,902.19	3,544.58	0.00	0.00	0.00
11,300.00	90.21	359.90	7,141.49	3,387.72	-1,902.37	3,643.38	0.00	0.00	0.00
11,400.00	90.21	359.90	7,141.13	3,487.72	-1,902.55	3,742.18	0.00	0.00	0.00
11,500.00	90.21	359.90	7,140.77	3,587.72	-1,902.73	3,840.98	0.00	0.00	0.00
11,600.00	90.21	359.90	7,140.41	3,687.72	-1,902.90	3,939.78	0.00	0.00	0.00
11,700.00	90.21	359.90	7,140.05	3,787.72	-1,903.08	4,038.58	0.00	0.00	0.00
11,800.00	90.21	359.90	7,139.69	3,887.71	-1,903.26	4,137.38	0.00	0.00	0.00
11,900.00	90.21	359.90	7,139.33	3,987.71	-1,903.44	4,236.17	0.00	0.00	0.00
12,000.00	90.21	359.90	7,138.97	4,087.71	-1,903.62	4,334.97	0.00	0.00	0.00
12,100.00	90.21	359.90	7,138.61	4,187.71	-1,903.80	4,433.77	0.00	0.00	0.00
12,200.00	90.21	359.90	7,138.25	4,287.71	-1,903.97	4,532.57	0.00	0.00	0.00
12,300.00	90.21	359.90	7,137.89	4,387.71	-1,904.15	4,631.37	0.00	0.00	0.00
12,400.00	90.21	359.90	7,137.52	4,487.71	-1,904.33	4,730.17	0.00	0.00	0.00
12,500.00	90.21	359.90	7,137.16	4,587.71	-1,904.51	4,828.97	0.00	0.00	0.00
12,600.00	90.21	359.90	7,136.80	4,687.71	-1,904.69	4,927.76	0.00	0.00	0.00
12,700.00	90.21	359.90	7,136.44	4,787.71	-1,904.87	5,026.56	0.00	0.00	0.00
12,800.00	90.21	359.90	7,136.08	4,887.71	-1,905.04	5,125.36	0.00	0.00	0.00
12,900.00	90.21	359.90	7,135.72	4,987.71	-1,905.22	5,224.16	0.00	0.00	0.00
13,000.00	90.21	359.90	7,135.36	5,087.70	-1,905.40	5,322.96	0.00	0.00	0.00
13,100.00	90.21	359.90	7,135.00	5,187.70	-1,905.58	5,421.76	0.00	0.00	0.00
13,200.00	90.21	359.90	7,134.64	5,287.70	-1,905.76	5,520.55	0.00	0.00	0.00
13,300.00	90.21	359.90	7,134.28	5,387.70	-1,905.94	5,619.35	0.00	0.00	0.00
13,400.00	90.21	359.90	7,133.92	5,487.70	-1,906.12	5,718.15	0.00	0.00	0.00
13,500.00	90.21	359.90	7,133.56	5,587.70	-1,906.29	5,816.95	0.00	0.00	0.00
13,600.00	90.21	359.90	7,133.20	5,687.70	-1,906.47	5,915.75	0.00	0.00	0.00
13,700.00	90.21	359.90	7,132.84	5,787.70	-1,906.65	6,014.55	0.00	0.00	0.00
13,800.00	90.21	359.90	7,132.48	5,887.70	-1,906.83	6,113.35	0.00	0.00	0.00
13,900.00	90.21	359.90	7,132.12	5,987.70	-1,907.01	6,212.14	0.00	0.00	0.00
14,000.00	90.21	359.90	7,131.76	6,087.70	-1,907.19	6,310.94	0.00	0.00	0.00
14,100.00	90.21	359.90	7,131.40	6,187.70	-1,907.36	6,409.74	0.00	0.00	0.00
14,200.00	90.21	359.90	7,131.04	6,287.70	-1,907.54	6,508.54	0.00	0.00	0.00
14,300.00	90.21	359.90	7,130.67	6,387.69	-1,907.72	6,607.34	0.00	0.00	0.00
14,400.00	90.21	359.90	7,130.31	6,487.69	-1,907.90	6,706.14	0.00	0.00	0.00
14,500.00	90.21	359.90	7,129.95	6,587.69	-1,908.08	6,804.93	0.00	0.00	0.00
14,600.00	90.21	359.90	7,129.59	6,687.69	-1,908.26	6,903.73	0.00	0.00	0.00
14,700.00	90.21	359.90	7,129.23	6,787.69	-1,908.43	7,002.53	0.00	0.00	0.00

<b>Database:</b>	Casper District	<b>Local Co-ordinate Reference:</b>	Well Evans 4N-14A-XR
<b>Company:</b>	Synergy Resources Corp.	<b>TVD Reference:</b>	GL 4940 & KB 20 @ 4960.00ft (PD 462)
<b>Project:</b>	Weld County, CO NAD 83	<b>MD Reference:</b>	GL 4940 & KB 20 @ 4960.00ft (PD 462)
<b>Site:</b>	Evans 7-26 Pad	<b>North Reference:</b>	True
<b>Well:</b>	Evans 4N-14A-XR	<b>Survey Calculation Method:</b>	Minimum Curvature
<b>Wellbore:</b>	OH		
<b>Design:</b>	Plan #1		

Planned Survey									
Measured Depth (ft)	Inclination (°)	Azimuth (°)	Vertical Depth (ft)	+N/-S (ft)	+E/-W (ft)	Vertical Section (ft)	Dogleg Rate (°/100ft)	Build Rate (°/100ft)	Turn Rate (°/100ft)
14,800.00	90.21	359.90	7,128.87	6,887.69	-1,908.61	7,101.33	0.00	0.00	0.00
14,900.00	90.21	359.90	7,128.51	6,987.69	-1,908.79	7,200.13	0.00	0.00	0.00
15,000.00	90.21	359.90	7,128.15	7,087.69	-1,908.97	7,298.93	0.00	0.00	0.00
15,100.00	90.21	359.90	7,127.79	7,187.69	-1,909.15	7,397.73	0.00	0.00	0.00
15,200.00	90.21	359.90	7,127.43	7,287.69	-1,909.33	7,496.52	0.00	0.00	0.00
15,300.00	90.21	359.90	7,127.07	7,387.69	-1,909.50	7,595.32	0.00	0.00	0.00
15,400.00	90.21	359.90	7,126.71	7,487.69	-1,909.68	7,694.12	0.00	0.00	0.00
15,500.00	90.21	359.90	7,126.35	7,587.68	-1,909.86	7,792.92	0.00	0.00	0.00
15,600.00	90.21	359.90	7,125.99	7,687.68	-1,910.04	7,891.72	0.00	0.00	0.00
15,700.00	90.21	359.90	7,125.63	7,787.68	-1,910.22	7,990.52	0.00	0.00	0.00
15,800.00	90.21	359.90	7,125.27	7,887.68	-1,910.40	8,089.32	0.00	0.00	0.00
15,900.00	90.21	359.90	7,124.91	7,987.68	-1,910.57	8,188.11	0.00	0.00	0.00
16,000.00	90.21	359.90	7,124.55	8,087.68	-1,910.75	8,286.91	0.00	0.00	0.00
16,100.00	90.21	359.90	7,124.19	8,187.68	-1,910.93	8,385.71	0.00	0.00	0.00
16,200.00	90.21	359.90	7,123.83	8,287.68	-1,911.11	8,484.51	0.00	0.00	0.00
16,300.00	90.21	359.90	7,123.46	8,387.68	-1,911.29	8,583.31	0.00	0.00	0.00
16,400.00	90.21	359.90	7,123.10	8,487.68	-1,911.47	8,682.11	0.00	0.00	0.00
16,500.00	90.21	359.90	7,122.74	8,587.68	-1,911.64	8,780.90	0.00	0.00	0.00
16,600.00	90.21	359.90	7,122.38	8,687.68	-1,911.82	8,879.70	0.00	0.00	0.00
16,700.00	90.21	359.90	7,122.02	8,787.68	-1,912.00	8,978.50	0.00	0.00	0.00
16,800.00	90.21	359.90	7,121.66	8,887.67	-1,912.18	9,077.30	0.00	0.00	0.00
16,900.00	90.21	359.90	7,121.30	8,987.67	-1,912.36	9,176.10	0.00	0.00	0.00
17,000.00	90.21	359.90	7,120.94	9,087.67	-1,912.54	9,274.90	0.00	0.00	0.00
17,100.00	90.21	359.90	7,120.58	9,187.67	-1,912.71	9,373.70	0.00	0.00	0.00
17,200.00	90.21	359.90	7,120.22	9,287.67	-1,912.89	9,472.49	0.00	0.00	0.00
17,300.00	90.21	359.90	7,119.86	9,387.67	-1,913.07	9,571.29	0.00	0.00	0.00
17,400.00	90.21	359.90	7,119.50	9,487.67	-1,913.25	9,670.09	0.00	0.00	0.00
17,500.00	90.21	359.90	7,119.14	9,587.67	-1,913.43	9,768.89	0.00	0.00	0.00
17,600.00	90.21	359.90	7,118.78	9,687.67	-1,913.61	9,867.69	0.00	0.00	0.00
17,700.00	90.21	359.90	7,118.42	9,787.67	-1,913.78	9,966.49	0.00	0.00	0.00
17,800.00	90.21	359.90	7,118.06	9,887.67	-1,913.96	10,065.29	0.00	0.00	0.00
17,900.00	90.21	359.90	7,117.70	9,987.67	-1,914.14	10,164.08	0.00	0.00	0.00
18,000.00	90.21	359.90	7,117.34	10,087.66	-1,914.32	10,262.88	0.00	0.00	0.00
18,100.00	90.21	359.90	7,116.98	10,187.66	-1,914.50	10,361.68	0.00	0.00	0.00
18,200.00	90.21	359.90	7,116.61	10,287.66	-1,914.68	10,460.48	0.00	0.00	0.00
18,300.00	90.21	359.90	7,116.25	10,387.66	-1,914.85	10,559.28	0.00	0.00	0.00
18,400.00	90.21	359.90	7,115.89	10,487.66	-1,915.03	10,658.08	0.00	0.00	0.00
18,500.00	90.21	359.90	7,115.53	10,587.66	-1,915.21	10,756.87	0.00	0.00	0.00
18,600.00	90.21	359.90	7,115.17	10,687.66	-1,915.39	10,855.67	0.00	0.00	0.00
18,700.00	90.21	359.90	7,114.81	10,787.66	-1,915.57	10,954.47	0.00	0.00	0.00
18,800.00	90.21	359.90	7,114.45	10,887.66	-1,915.75	11,053.27	0.00	0.00	0.00
18,900.00	90.21	359.90	7,114.09	10,987.66	-1,915.92	11,152.07	0.00	0.00	0.00
19,000.00	90.21	359.90	7,113.73	11,087.66	-1,916.10	11,250.87	0.00	0.00	0.00
19,100.00	90.21	359.90	7,113.37	11,187.66	-1,916.28	11,349.67	0.00	0.00	0.00
19,200.00	90.21	359.90	7,113.01	11,287.65	-1,916.46	11,448.46	0.00	0.00	0.00
19,300.00	90.21	359.90	7,112.65	11,387.65	-1,916.64	11,547.26	0.00	0.00	0.00
19,400.00	90.21	359.90	7,112.29	11,487.65	-1,916.82	11,646.06	0.00	0.00	0.00
19,500.00	90.21	359.90	7,111.93	11,587.65	-1,916.99	11,744.86	0.00	0.00	0.00
19,600.00	90.21	359.90	7,111.57	11,687.65	-1,917.17	11,843.66	0.00	0.00	0.00
19,700.00	90.21	359.90	7,111.21	11,787.65	-1,917.35	11,942.46	0.00	0.00	0.00
19,800.00	90.21	359.90	7,110.85	11,887.65	-1,917.53	12,041.26	0.00	0.00	0.00
19,900.00	90.21	359.90	7,110.49	11,987.65	-1,917.71	12,140.05	0.00	0.00	0.00
20,000.00	90.21	359.90	7,110.13	12,087.65	-1,917.89	12,238.85	0.00	0.00	0.00
20,034.77	90.21	359.90	7,110.00	12,122.42	-1,917.95	12,273.21	0.00	0.00	0.00

<b>Database:</b>	Casper District	<b>Local Co-ordinate Reference:</b>	Well Evans 4N-14A-XR
<b>Company:</b>	Synergy Resources Corp.	<b>TVD Reference:</b>	GL 4940 & KB 20 @ 4960.00ft (PD 462)
<b>Project:</b>	Weld County, CO NAD 83	<b>MD Reference:</b>	GL 4940 & KB 20 @ 4960.00ft (PD 462)
<b>Site:</b>	Evans 7-26 Pad	<b>North Reference:</b>	True
<b>Well:</b>	Evans 4N-14A-XR	<b>Survey Calculation Method:</b>	Minimum Curvature
<b>Wellbore:</b>	OH		
<b>Design:</b>	Plan #1		

Planned Survey									
Measured Depth (ft)	Inclination (°)	Azimuth (°)	Vertical Depth (ft)	+N/-S (ft)	+E/-W (ft)	Vertical Section (ft)	Dogleg Rate (°/100ft)	Build Rate (°/100ft)	Turn Rate (°/100ft)
TD at 20034.77 - 4N-14A-XR(460 FNL 1049 FWL)PBHL									

Design Targets									
Target Name	Dip Angle (°)	Dip Dir. (°)	TVD (ft)	+N/-S (ft)	+E/-W (ft)	Northing (usft)	Easting (usft)	Latitude	Longitude
4N-14A-XR(460 FNL 1049 FWL)PBHL - hit/miss target - Shape - plan hits target center - Circle (radius 0.00)	0.00	0.00	7,110.00	12,122.42	-1,917.95	1,391,455.22	3,208,161.17	40.4055380	-104.7525210

Casing Points					
Measured Depth (ft)	Vertical Depth (ft)	Name	Casing Diameter (in)	Hole Diameter (in)	
1,755.54	1,700.00	9 5/8"	9.625	13.500	

Plan Annotations				
Measured Depth (ft)	Vertical Depth (ft)	Local Coordinates		Comment
		+N/-S (ft)	+E/-W (ft)	
300.00	300.00	0.00	0.00	Start Build 2.00
1,465.10	1,433.24	-70.98	-222.63	Start 3847.33 hold at 1465.10 MD
5,312.43	4,966.76	-533.31	-1,672.62	Start Drop -2.00
6,477.52	6,100.00	-604.29	-1,895.25	Start 533.13 hold at 6477.52 MD
7,010.65	6,633.13	-604.29	-1,895.25	Start DLS 11.00 TFO 359.90
7,830.71	7,154.00	-81.54	-1,896.18	Start 12204.06 hold at 7830.71 MD
20,034.77	7,110.00	12,122.42	-1,917.95	TD at 20034.77