



PROJECT DETAILS: Weld County, CO NAD 83

Geodetic System: US State Plane 1983  
Datum: North American Datum 1983  
Ellipsoid: GRS 1980  
Zone: Colorado Northern Zone  
System Datum: Mean Sea Level  
Local North: True

Project: Weld County, CO NAD 83  
Site: Evans 7-26 Pad  
Well: Evans 30N-14B-XR  
Wellbore: OH  
Design: Plan #1



Azimuths to True North  
Magnetic North: 8.48°



Magnetic Field  
Strength: 52529.2snT  
Dip Angle: 66.93°  
Date: 3/9/2016  
Model: BGGM2015

#### SECTION DETAILS

MD	Inc	Azi	TVD	+N/-S	+E/-W	Dleg	TFace	VSect
0.00	0.00	0.00	0.00	0.00	0.00	0.00	0.00	0.00
200.00	0.00	0.00	200.00	0.00	0.00	0.00	0.00	0.00
1605.70	28.11	257.52	1549.96	-73.05	-330.02	2.00	257.52	-6.44
5460.60	28.11	257.52	4950.04	-465.62	-2103.63	0.00	0.00	-41.04
6866.30	0.00	0.00	6300.00	-538.67	-2433.65	2.00	180.00	-47.48
7282.43	0.00	0.00	6716.13	-538.67	-2433.65	0.00	0.00	-47.48
8100.61	90.00	359.90	7237.00	-17.80	-2434.59	11.00	359.90	463.31
20313.38	90.00	359.90	7237.00	12194.96	-2456.54	0.00	0.00	12439.92

#### DESIGN TARGET DETAILS

Name	TVD	+N/-S	+E/-W	Northing	Easting	Latitude	Longitude	Shape
PBHL	7237.00	12194.96	-2456.54	1391463.07	3207622.49	40.4055720	-104.7544550	Point
- plan hits target center								

#### WELL DETAILS: Evans 30N-14B-XR

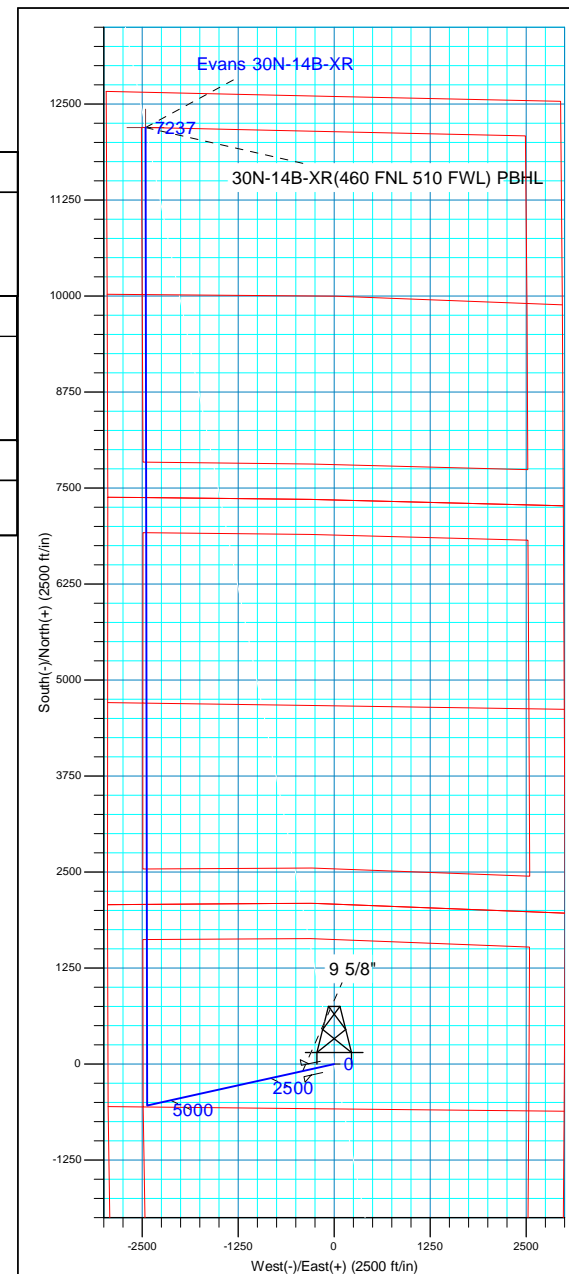
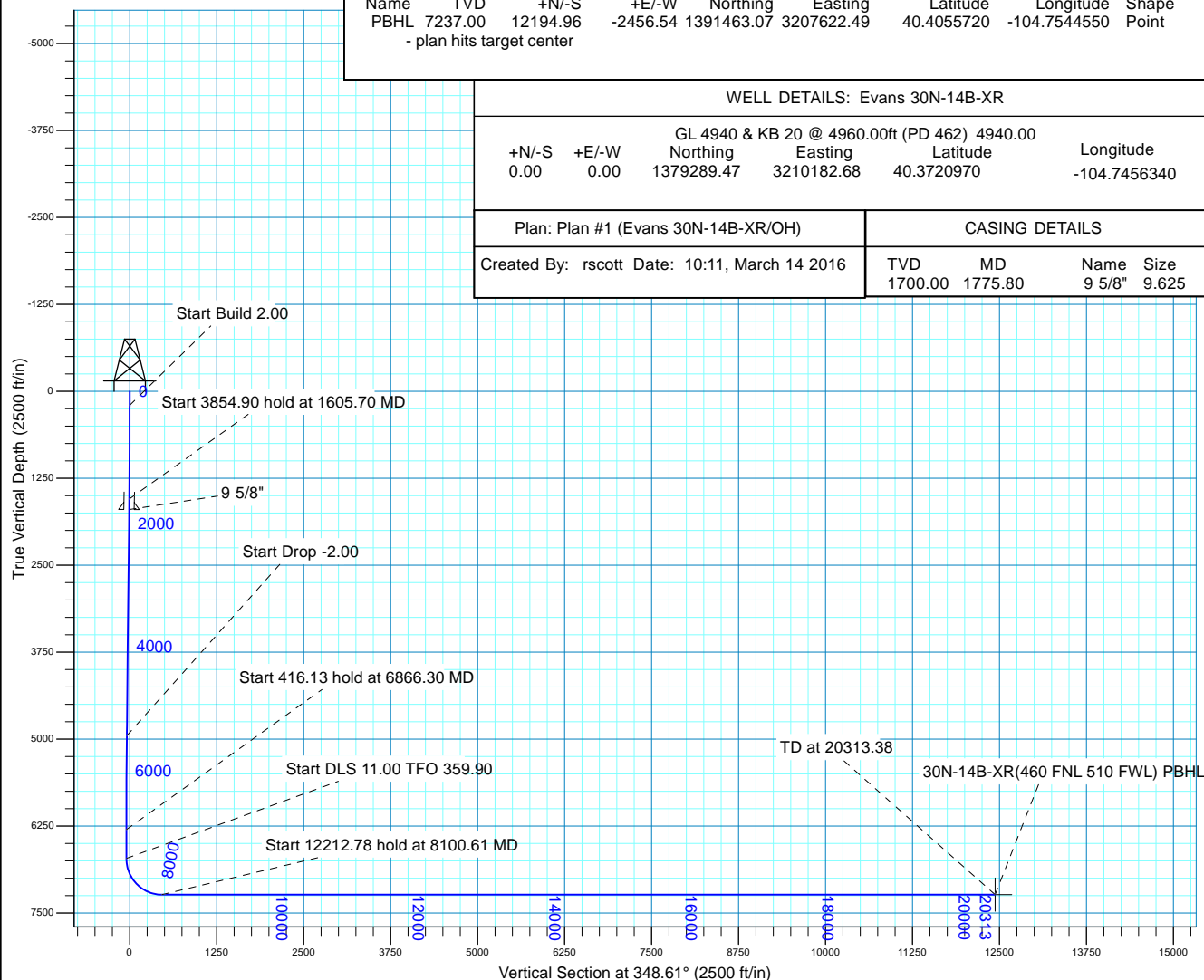
GL 4940 & KB 20 @ 4960.00ft (PD 462)				4940.00
+N/-S	+E/-W	Northing	Easting	Latitude
0.00	0.00	1379289.47	3210182.68	40.3720970
				Longitude
				-104.7456340

Plan: Plan #1 (Evans 30N-14B-XR/OH)

#### CASING DETAILS

Created By: rscott Date: 10:11, March 14 2016

TVD	MD	Name	Size
1700.00	1775.80	9 5/8"	9.625





## **Synergy Resources Corp.**

**Weld County, CO NAD 83**

**Evans 7-26 Pad**

**Evans 30N-14B-XR**

**OH**

**Plan: Plan #1**

## **Standard Planning Report**

**13 March, 2016**



<b>Database:</b>	Casper District	<b>Local Co-ordinate Reference:</b>	Well Evans 30N-14B-XR
<b>Company:</b>	Synergy Resources Corp.	<b>TVD Reference:</b>	GL 4940 & KB 20 @ 4960.00ft (PD 462)
<b>Project:</b>	Weld County, CO NAD 83	<b>MD Reference:</b>	GL 4940 & KB 20 @ 4960.00ft (PD 462)
<b>Site:</b>	Evans 7-26 Pad	<b>North Reference:</b>	True
<b>Well:</b>	Evans 30N-14B-XR	<b>Survey Calculation Method:</b>	Minimum Curvature
<b>Wellbore:</b>	OH		
<b>Design:</b>	Plan #1		

<b>Project</b>	Weld County, CO NAD 83		
<b>Map System:</b>	US State Plane 1983	<b>System Datum:</b>	Mean Sea Level
<b>Geo Datum:</b>	North American Datum 1983		
<b>Map Zone:</b>	Colorado Northern Zone		

Site		Evans 7-26 Pad, SECTION 26 T5N R66W			
Site Position:		Northing:	1,379,289.48 usft	Latitude:	40.3720970
From:	Lat/Long	Easting:	3,210,182.68 usft	Longitude:	-104.7456340
Position Uncertainty:	3.28 ft	Slot Radius:	13.200 in	Grid Convergence:	0.49 °

Well	Evans 30N-14B-XR, 2082 FNL 2998 FEL					
Well Position	+N/-S	0.00 ft	Northing:	1,379,289.48 usft	Latitude:	40.3720970
	+E/-W	0.00 ft	Easting:	3,210,182.68 usft	Longitude:	-104.7456340
Position Uncertainty		3.28 ft	Wellhead Elevation:	0.00 ft	Ground Level:	4,940.00 ft

<b>Wellbore</b>	OH				
<b>Magnetics</b>	<b>Model Name</b>	<b>Sample Date</b>	<b>Declination (°)</b>	<b>Dip Angle (°)</b>	<b>Field Strength (nT)</b>
	BGGM2015	3/9/2016	8.48	66.93	52,529

<b>Design</b>	Plan #1			
<b>Audit Notes:</b>				
<b>Version:</b>	<b>Phase:</b>	PLAN	<b>Tie On Depth:</b>	0.00
<b>Vertical Section:</b>	<b>Depth From (TVD) (ft)</b>	<b>+N/-S (ft)</b>	<b>+E/-W (ft)</b>	<b>Direction (°)</b>
	0.00	0.00	0.00	348.61

<b>Plan Sections</b>										
Measured Depth (ft)	Inclination (°)	Azimuth (°)	Vertical Depth (ft)	+N/-S (ft)	+E/-W (ft)	Dogleg Rate (°/100ft)	Build Rate (°/100ft)	Turn Rate (°/100ft)	TFO (°)	Target
0.00	0.00	0.00	0.00	0.00	0.00	0.00	0.00	0.00	0.00	
200.00	0.00	0.00	200.00	0.00	0.00	0.00	0.00	0.00	0.00	
1,605.70	28.11	257.52	1,549.96	-73.05	-330.02	2.00	2.00	0.00	257.52	
5,460.60	28.11	257.52	4,950.04	-465.62	-2,103.63	0.00	0.00	0.00	0.00	
6,866.30	0.00	0.00	6,300.00	-538.67	-2,433.65	2.00	-2.00	0.00	180.00	
7,282.43	0.00	0.00	6,716.13	-538.67	-2,433.65	0.00	0.00	0.00	0.00	
8,100.61	90.00	359.90	7,237.00	-17.80	-2,434.59	11.00	11.00	-0.01	359.90	
20,313.38	90.00	359.90	7,237.00	12,194.96	-2,456.54	0.00	0.00	0.00	0.00	30N-14B-XR(460 FNL)

<b>Database:</b>	Casper District	<b>Local Co-ordinate Reference:</b>	Well Evans 30N-14B-XR
<b>Company:</b>	Synergy Resources Corp.	<b>TVD Reference:</b>	GL 4940 & KB 20 @ 4960.00ft (PD 462)
<b>Project:</b>	Weld County, CO NAD 83	<b>MD Reference:</b>	GL 4940 & KB 20 @ 4960.00ft (PD 462)
<b>Site:</b>	Evans 7-26 Pad	<b>North Reference:</b>	True
<b>Well:</b>	Evans 30N-14B-XR	<b>Survey Calculation Method:</b>	Minimum Curvature
<b>Wellbore:</b>	OH		
<b>Design:</b>	Plan #1		

Planned Survey									
Measured Depth (ft)	Inclination (°)	Azimuth (°)	Vertical Depth (ft)	+N/-S (ft)	+E/-W (ft)	Vertical Section (ft)	Dogleg Rate (°/100ft)	Build Rate (°/100ft)	Turn Rate (°/100ft)
0.00	0.00	0.00	0.00	0.00	0.00	0.00	0.00	0.00	0.00
100.00	0.00	0.00	100.00	0.00	0.00	0.00	0.00	0.00	0.00
200.00	0.00	0.00	200.00	0.00	0.00	0.00	0.00	0.00	0.00
<b>Start Build 2.00</b>									
300.00	2.00	257.52	299.98	-0.38	-1.70	-0.03	2.00	2.00	0.00
400.00	4.00	257.52	399.84	-1.51	-6.81	-0.13	2.00	2.00	0.00
500.00	6.00	257.52	499.45	-3.39	-15.32	-0.30	2.00	2.00	0.00
600.00	8.00	257.52	598.70	-6.03	-27.22	-0.53	2.00	2.00	0.00
700.00	10.00	257.52	697.47	-9.41	-42.49	-0.83	2.00	2.00	0.00
800.00	12.00	257.52	795.62	-13.53	-61.12	-1.19	2.00	2.00	0.00
900.00	14.00	257.52	893.06	-18.39	-83.09	-1.62	2.00	2.00	0.00
1,000.00	16.00	257.52	989.64	-23.98	-108.35	-2.11	2.00	2.00	0.00
1,100.00	18.00	257.52	1,085.27	-30.30	-136.90	-2.67	2.00	2.00	0.00
1,200.00	20.00	257.52	1,179.82	-37.34	-168.69	-3.29	2.00	2.00	0.00
1,300.00	22.00	257.52	1,273.17	-45.08	-203.67	-3.97	2.00	2.00	0.00
1,400.00	24.00	257.52	1,365.21	-53.53	-241.82	-4.72	2.00	2.00	0.00
1,500.00	26.00	257.52	1,455.84	-62.66	-283.08	-5.52	2.00	2.00	0.00
1,600.00	28.00	257.52	1,544.94	-72.47	-327.41	-6.39	2.00	2.00	0.00
1,605.70	28.11	257.52	1,549.96	-73.05	-330.02	-6.44	2.00	2.00	0.00
<b>Start 3854.90 hold at 1605.70 MD</b>									
1,700.00	28.11	257.52	1,633.14	-82.65	-373.41	-7.29	0.00	0.00	0.00
1,775.80	28.11	257.52	1,700.00	-90.37	-408.29	-7.97	0.00	0.00	0.00
<b>9 5/8"</b>									
1,800.00	28.11	257.52	1,721.34	-92.84	-419.42	-8.18	0.00	0.00	0.00
1,900.00	28.11	257.52	1,809.54	-103.02	-465.43	-9.08	0.00	0.00	0.00
2,000.00	28.11	257.52	1,897.74	-113.20	-511.44	-9.98	0.00	0.00	0.00
2,100.00	28.11	257.52	1,985.95	-123.39	-557.45	-10.88	0.00	0.00	0.00
2,200.00	28.11	257.52	2,074.15	-133.57	-603.46	-11.77	0.00	0.00	0.00
2,300.00	28.11	257.52	2,162.35	-143.75	-649.46	-12.67	0.00	0.00	0.00
2,400.00	28.11	257.52	2,250.55	-153.94	-695.47	-13.57	0.00	0.00	0.00
2,500.00	28.11	257.52	2,338.75	-164.12	-741.48	-14.47	0.00	0.00	0.00
2,600.00	28.11	257.52	2,426.95	-174.31	-787.49	-15.36	0.00	0.00	0.00
2,700.00	28.11	257.52	2,515.15	-184.49	-833.50	-16.26	0.00	0.00	0.00
2,800.00	28.11	257.52	2,603.35	-194.67	-879.51	-17.16	0.00	0.00	0.00
2,900.00	28.11	257.52	2,691.56	-204.86	-925.52	-18.06	0.00	0.00	0.00
3,000.00	28.11	257.52	2,779.76	-215.04	-971.53	-18.96	0.00	0.00	0.00
3,100.00	28.11	257.52	2,867.96	-225.22	-1,017.54	-19.85	0.00	0.00	0.00
3,200.00	28.11	257.52	2,956.16	-235.41	-1,063.55	-20.75	0.00	0.00	0.00
3,300.00	28.11	257.52	3,044.36	-245.59	-1,109.56	-21.65	0.00	0.00	0.00
3,400.00	28.11	257.52	3,132.56	-255.78	-1,155.56	-22.55	0.00	0.00	0.00
3,500.00	28.11	257.52	3,220.76	-265.96	-1,201.57	-23.44	0.00	0.00	0.00
3,600.00	28.11	257.52	3,308.96	-276.14	-1,247.58	-24.34	0.00	0.00	0.00
3,700.00	28.11	257.52	3,397.17	-286.33	-1,293.59	-25.24	0.00	0.00	0.00
3,800.00	28.11	257.52	3,485.37	-296.51	-1,339.60	-26.14	0.00	0.00	0.00
3,900.00	28.11	257.52	3,573.57	-306.69	-1,385.61	-27.03	0.00	0.00	0.00
4,000.00	28.11	257.52	3,661.77	-316.88	-1,431.62	-27.93	0.00	0.00	0.00
4,100.00	28.11	257.52	3,749.97	-327.06	-1,477.63	-28.83	0.00	0.00	0.00
4,200.00	28.11	257.52	3,838.17	-337.25	-1,523.64	-29.73	0.00	0.00	0.00
4,300.00	28.11	257.52	3,926.37	-347.43	-1,569.65	-30.63	0.00	0.00	0.00
4,400.00	28.11	257.52	4,014.57	-357.61	-1,615.66	-31.52	0.00	0.00	0.00
4,500.00	28.11	257.52	4,102.78	-367.80	-1,661.66	-32.42	0.00	0.00	0.00
4,600.00	28.11	257.52	4,190.98	-377.98	-1,707.67	-33.32	0.00	0.00	0.00
4,700.00	28.11	257.52	4,279.18	-388.16	-1,753.68	-34.22	0.00	0.00	0.00

<b>Database:</b>	Casper District	<b>Local Co-ordinate Reference:</b>	Well Evans 30N-14B-XR
<b>Company:</b>	Synergy Resources Corp.	<b>TVD Reference:</b>	GL 4940 & KB 20 @ 4960.00ft (PD 462)
<b>Project:</b>	Weld County, CO NAD 83	<b>MD Reference:</b>	GL 4940 & KB 20 @ 4960.00ft (PD 462)
<b>Site:</b>	Evans 7-26 Pad	<b>North Reference:</b>	True
<b>Well:</b>	Evans 30N-14B-XR	<b>Survey Calculation Method:</b>	Minimum Curvature
<b>Wellbore:</b>	OH		
<b>Design:</b>	Plan #1		

Planned Survey									
Measured Depth (ft)	Inclination (°)	Azimuth (°)	Vertical Depth (ft)	+N/-S (ft)	+E/-W (ft)	Vertical Section (ft)	Dogleg Rate (°/100ft)	Build Rate (°/100ft)	Turn Rate (°/100ft)
4,800.00	28.11	257.52	4,367.38	-398.35	-1,799.69	-35.11	0.00	0.00	0.00
4,900.00	28.11	257.52	4,455.58	-408.53	-1,845.70	-36.01	0.00	0.00	0.00
5,000.00	28.11	257.52	4,543.78	-418.72	-1,891.71	-36.91	0.00	0.00	0.00
5,100.00	28.11	257.52	4,631.98	-428.90	-1,937.72	-37.81	0.00	0.00	0.00
5,200.00	28.11	257.52	4,720.18	-439.08	-1,983.73	-38.70	0.00	0.00	0.00
5,300.00	28.11	257.52	4,808.38	-449.27	-2,029.74	-39.60	0.00	0.00	0.00
5,400.00	28.11	257.52	4,896.59	-459.45	-2,075.75	-40.50	0.00	0.00	0.00
5,460.60	28.11	257.52	4,950.04	-465.62	-2,103.63	-41.04	0.00	0.00	0.00
<b>Start Drop -2.00</b>									
5,500.00	27.33	257.52	4,984.91	-469.58	-2,121.52	-41.39	2.00	-2.00	0.00
5,600.00	25.33	257.52	5,074.54	-479.17	-2,164.82	-42.24	2.00	-2.00	0.00
5,700.00	23.33	257.52	5,165.66	-488.07	-2,205.04	-43.02	2.00	-2.00	0.00
5,800.00	21.33	257.52	5,258.15	-496.28	-2,242.12	-43.75	2.00	-2.00	0.00
5,900.00	19.33	257.52	5,351.92	-503.78	-2,276.04	-44.41	2.00	-2.00	0.00
6,000.00	17.33	257.52	5,446.85	-510.58	-2,306.74	-45.01	2.00	-2.00	0.00
6,100.00	15.33	257.52	5,542.81	-516.65	-2,334.18	-45.54	2.00	-2.00	0.00
6,200.00	13.33	257.52	5,639.69	-522.00	-2,358.34	-46.01	2.00	-2.00	0.00
6,300.00	11.33	257.52	5,737.38	-526.61	-2,379.18	-46.42	2.00	-2.00	0.00
6,400.00	9.33	257.52	5,835.76	-530.49	-2,396.68	-46.76	2.00	-2.00	0.00
6,500.00	7.33	257.52	5,934.70	-533.62	-2,410.82	-47.04	2.00	-2.00	0.00
6,600.00	5.33	257.52	6,034.09	-536.00	-2,421.57	-47.25	2.00	-2.00	0.00
6,700.00	3.33	257.52	6,133.80	-537.63	-2,428.94	-47.39	2.00	-2.00	0.00
6,800.00	1.33	257.52	6,233.71	-538.50	-2,432.90	-47.47	2.00	-2.00	0.00
6,866.30	0.00	0.00	6,300.00	-538.67	-2,433.65	-47.48	2.00	-2.00	0.00
<b>Start 416.13 hold at 6866.30 MD</b>									
6,900.00	0.00	0.00	6,333.70	-538.67	-2,433.65	-47.48	0.00	0.00	0.00
7,000.00	0.00	0.00	6,433.70	-538.67	-2,433.65	-47.48	0.00	0.00	0.00
7,100.00	0.00	0.00	6,533.70	-538.67	-2,433.65	-47.48	0.00	0.00	0.00
7,200.00	0.00	0.00	6,633.70	-538.67	-2,433.65	-47.48	0.00	0.00	0.00
7,282.43	0.00	0.00	6,716.13	-538.67	-2,433.65	-47.48	0.00	0.00	0.00
<b>Start DLS 11.00 TFO 359.90</b>									
7,300.00	1.93	359.90	6,733.70	-538.37	-2,433.65	-47.19	11.00	11.00	0.00
7,400.00	12.93	359.90	6,832.71	-525.46	-2,433.67	-34.53	11.00	11.00	0.00
7,500.00	23.93	359.90	6,927.43	-493.89	-2,433.73	-3.57	11.00	11.00	0.00
7,600.00	34.93	359.90	7,014.39	-444.82	-2,433.82	44.55	11.00	11.00	0.00
7,700.00	45.93	359.90	7,090.39	-380.06	-2,433.94	108.06	11.00	11.00	0.00
7,800.00	56.93	359.90	7,152.64	-302.00	-2,434.08	184.61	11.00	11.00	0.00
7,900.00	67.93	359.90	7,198.84	-213.49	-2,434.23	271.41	11.00	11.00	0.00
8,000.00	78.93	359.90	7,227.31	-117.78	-2,434.41	365.26	11.00	11.00	0.00
8,100.00	89.93	359.90	7,237.00	-18.41	-2,434.59	462.72	11.00	11.00	0.00
8,100.61	90.00	359.90	7,237.00	-17.80	-2,434.59	463.31	11.00	11.00	0.00
<b>Start 12212.78 hold at 8100.61 MD</b>									
8,200.00	90.00	359.90	7,237.00	81.59	-2,434.77	560.78	0.00	0.00	0.00
8,300.00	90.00	359.90	7,237.00	181.59	-2,434.94	658.85	0.00	0.00	0.00
8,400.00	90.00	359.90	7,237.00	281.59	-2,435.12	756.92	0.00	0.00	0.00
8,500.00	90.00	359.90	7,237.00	381.59	-2,435.30	854.98	0.00	0.00	0.00
8,600.00	90.00	359.90	7,237.00	481.59	-2,435.48	953.05	0.00	0.00	0.00
8,700.00	90.00	359.90	7,237.00	581.59	-2,435.66	1,051.12	0.00	0.00	0.00
8,800.00	90.00	359.90	7,237.00	681.59	-2,435.84	1,149.18	0.00	0.00	0.00
8,900.00	90.00	359.90	7,237.00	781.59	-2,436.02	1,247.25	0.00	0.00	0.00
9,000.00	90.00	359.90	7,237.00	881.59	-2,436.20	1,345.31	0.00	0.00	0.00
9,100.00	90.00	359.90	7,237.00	981.59	-2,436.38	1,443.38	0.00	0.00	0.00
9,200.00	90.00	359.90	7,237.00	1,081.59	-2,436.56	1,541.45	0.00	0.00	0.00
9,300.00	90.00	359.90	7,237.00	1,181.59	-2,436.74	1,639.51	0.00	0.00	0.00

<b>Database:</b>	Casper District	<b>Local Co-ordinate Reference:</b>	Well Evans 30N-14B-XR
<b>Company:</b>	Synergy Resources Corp.	<b>TVD Reference:</b>	GL 4940 & KB 20 @ 4960.00ft (PD 462)
<b>Project:</b>	Weld County, CO NAD 83	<b>MD Reference:</b>	GL 4940 & KB 20 @ 4960.00ft (PD 462)
<b>Site:</b>	Evans 7-26 Pad	<b>North Reference:</b>	True
<b>Well:</b>	Evans 30N-14B-XR	<b>Survey Calculation Method:</b>	Minimum Curvature
<b>Wellbore:</b>	OH		
<b>Design:</b>	Plan #1		

Planned Survey									
Measured Depth (ft)	Inclination (°)	Azimuth (°)	Vertical Depth (ft)	+N/-S (ft)	+E/-W (ft)	Vertical Section (ft)	Dogleg Rate (°/100ft)	Build Rate (°/100ft)	Turn Rate (°/100ft)
9,400.00	90.00	359.90	7,237.00	1,281.59	-2,436.92	1,737.58	0.00	0.00	0.00
9,500.00	90.00	359.90	7,237.00	1,381.59	-2,437.10	1,835.64	0.00	0.00	0.00
9,600.00	90.00	359.90	7,237.00	1,481.59	-2,437.28	1,933.71	0.00	0.00	0.00
9,700.00	90.00	359.90	7,237.00	1,581.59	-2,437.46	2,031.78	0.00	0.00	0.00
9,800.00	90.00	359.90	7,237.00	1,681.59	-2,437.64	2,129.84	0.00	0.00	0.00
9,900.00	90.00	359.90	7,237.00	1,781.59	-2,437.82	2,227.91	0.00	0.00	0.00
10,000.00	90.00	359.90	7,237.00	1,881.59	-2,438.00	2,325.98	0.00	0.00	0.00
10,100.00	90.00	359.90	7,237.00	1,981.59	-2,438.18	2,424.04	0.00	0.00	0.00
10,200.00	90.00	359.90	7,237.00	2,081.59	-2,438.36	2,522.11	0.00	0.00	0.00
10,300.00	90.00	359.90	7,237.00	2,181.59	-2,438.54	2,620.17	0.00	0.00	0.00
10,400.00	90.00	359.90	7,237.00	2,281.59	-2,438.72	2,718.24	0.00	0.00	0.00
10,500.00	90.00	359.90	7,237.00	2,381.59	-2,438.90	2,816.31	0.00	0.00	0.00
10,600.00	90.00	359.90	7,237.00	2,481.59	-2,439.08	2,914.37	0.00	0.00	0.00
10,700.00	90.00	359.90	7,237.00	2,581.59	-2,439.26	3,012.44	0.00	0.00	0.00
10,800.00	90.00	359.90	7,237.00	2,681.59	-2,439.44	3,110.50	0.00	0.00	0.00
10,900.00	90.00	359.90	7,237.00	2,781.59	-2,439.62	3,208.57	0.00	0.00	0.00
11,000.00	90.00	359.90	7,237.00	2,881.59	-2,439.80	3,306.64	0.00	0.00	0.00
11,100.00	90.00	359.90	7,237.00	2,981.59	-2,439.98	3,404.70	0.00	0.00	0.00
11,200.00	90.00	359.90	7,237.00	3,081.59	-2,440.16	3,502.77	0.00	0.00	0.00
11,300.00	90.00	359.90	7,237.00	3,181.59	-2,440.34	3,600.84	0.00	0.00	0.00
11,400.00	90.00	359.90	7,237.00	3,281.59	-2,440.52	3,698.90	0.00	0.00	0.00
11,500.00	90.00	359.90	7,237.00	3,381.59	-2,440.70	3,796.97	0.00	0.00	0.00
11,600.00	90.00	359.90	7,237.00	3,481.59	-2,440.88	3,895.03	0.00	0.00	0.00
11,700.00	90.00	359.90	7,237.00	3,581.59	-2,441.06	3,993.10	0.00	0.00	0.00
11,800.00	90.00	359.90	7,237.00	3,681.59	-2,441.24	4,091.17	0.00	0.00	0.00
11,900.00	90.00	359.90	7,237.00	3,781.59	-2,441.42	4,189.23	0.00	0.00	0.00
12,000.00	90.00	359.90	7,237.00	3,881.59	-2,441.60	4,287.30	0.00	0.00	0.00
12,100.00	90.00	359.90	7,237.00	3,981.59	-2,441.78	4,385.37	0.00	0.00	0.00
12,200.00	90.00	359.90	7,237.00	4,081.58	-2,441.96	4,483.43	0.00	0.00	0.00
12,300.00	90.00	359.90	7,237.00	4,181.58	-2,442.14	4,581.50	0.00	0.00	0.00
12,400.00	90.00	359.90	7,237.00	4,281.58	-2,442.32	4,679.56	0.00	0.00	0.00
12,500.00	90.00	359.90	7,237.00	4,381.58	-2,442.50	4,777.63	0.00	0.00	0.00
12,600.00	90.00	359.90	7,237.00	4,481.58	-2,442.68	4,875.70	0.00	0.00	0.00
12,700.00	90.00	359.90	7,237.00	4,581.58	-2,442.86	4,973.76	0.00	0.00	0.00
12,800.00	90.00	359.90	7,237.00	4,681.58	-2,443.04	5,071.83	0.00	0.00	0.00
12,900.00	90.00	359.90	7,237.00	4,781.58	-2,443.21	5,169.89	0.00	0.00	0.00
13,000.00	90.00	359.90	7,237.00	4,881.58	-2,443.39	5,267.96	0.00	0.00	0.00
13,100.00	90.00	359.90	7,237.00	4,981.58	-2,443.57	5,366.03	0.00	0.00	0.00
13,200.00	90.00	359.90	7,237.00	5,081.58	-2,443.75	5,464.09	0.00	0.00	0.00
13,300.00	90.00	359.90	7,237.00	5,181.58	-2,443.93	5,562.16	0.00	0.00	0.00
13,400.00	90.00	359.90	7,237.00	5,281.58	-2,444.11	5,660.23	0.00	0.00	0.00
13,500.00	90.00	359.90	7,237.00	5,381.58	-2,444.29	5,758.29	0.00	0.00	0.00
13,600.00	90.00	359.90	7,237.00	5,481.58	-2,444.47	5,856.36	0.00	0.00	0.00
13,700.00	90.00	359.90	7,237.00	5,581.58	-2,444.65	5,954.42	0.00	0.00	0.00
13,800.00	90.00	359.90	7,237.00	5,681.58	-2,444.83	6,052.49	0.00	0.00	0.00
13,900.00	90.00	359.90	7,237.00	5,781.58	-2,445.01	6,150.56	0.00	0.00	0.00
14,000.00	90.00	359.90	7,237.00	5,881.58	-2,445.19	6,248.62	0.00	0.00	0.00
14,100.00	90.00	359.90	7,237.00	5,981.58	-2,445.37	6,346.69	0.00	0.00	0.00
14,200.00	90.00	359.90	7,237.00	6,081.58	-2,445.55	6,444.76	0.00	0.00	0.00
14,300.00	90.00	359.90	7,237.00	6,181.58	-2,445.73	6,542.82	0.00	0.00	0.00
14,400.00	90.00	359.90	7,237.00	6,281.58	-2,445.91	6,640.89	0.00	0.00	0.00
14,500.00	90.00	359.90	7,237.00	6,381.58	-2,446.09	6,738.95	0.00	0.00	0.00
14,600.00	90.00	359.90	7,237.00	6,481.58	-2,446.27	6,837.02	0.00	0.00	0.00
14,700.00	90.00	359.90	7,237.00	6,581.58	-2,446.45	6,935.09	0.00	0.00	0.00

<b>Database:</b>	Casper District	<b>Local Co-ordinate Reference:</b>	Well Evans 30N-14B-XR
<b>Company:</b>	Synergy Resources Corp.	<b>TVD Reference:</b>	GL 4940 & KB 20 @ 4960.00ft (PD 462)
<b>Project:</b>	Weld County, CO NAD 83	<b>MD Reference:</b>	GL 4940 & KB 20 @ 4960.00ft (PD 462)
<b>Site:</b>	Evans 7-26 Pad	<b>North Reference:</b>	True
<b>Well:</b>	Evans 30N-14B-XR	<b>Survey Calculation Method:</b>	Minimum Curvature
<b>Wellbore:</b>	OH		
<b>Design:</b>	Plan #1		

Planned Survey									
Measured Depth (ft)	Inclination (°)	Azimuth (°)	Vertical Depth (ft)	+N/-S (ft)	+E/-W (ft)	Vertical Section (ft)	Dogleg Rate (°/100ft)	Build Rate (°/100ft)	Turn Rate (°/100ft)
14,800.00	90.00	359.90	7,237.00	6,681.58	-2,446.63	7,033.15	0.00	0.00	0.00
14,900.00	90.00	359.90	7,237.00	6,781.58	-2,446.81	7,131.22	0.00	0.00	0.00
15,000.00	90.00	359.90	7,237.00	6,881.58	-2,446.99	7,229.28	0.00	0.00	0.00
15,100.00	90.00	359.90	7,237.00	6,981.58	-2,447.17	7,327.35	0.00	0.00	0.00
15,200.00	90.00	359.90	7,237.00	7,081.58	-2,447.35	7,425.42	0.00	0.00	0.00
15,300.00	90.00	359.90	7,237.00	7,181.58	-2,447.53	7,523.48	0.00	0.00	0.00
15,400.00	90.00	359.90	7,237.00	7,281.58	-2,447.71	7,621.55	0.00	0.00	0.00
15,500.00	90.00	359.90	7,237.00	7,381.58	-2,447.89	7,719.62	0.00	0.00	0.00
15,600.00	90.00	359.90	7,237.00	7,481.58	-2,448.07	7,817.68	0.00	0.00	0.00
15,700.00	90.00	359.90	7,237.00	7,581.58	-2,448.25	7,915.75	0.00	0.00	0.00
15,800.00	90.00	359.90	7,237.00	7,681.58	-2,448.43	8,013.81	0.00	0.00	0.00
15,900.00	90.00	359.90	7,237.00	7,781.58	-2,448.61	8,111.88	0.00	0.00	0.00
16,000.00	90.00	359.90	7,237.00	7,881.58	-2,448.79	8,209.95	0.00	0.00	0.00
16,100.00	90.00	359.90	7,237.00	7,981.58	-2,448.97	8,308.01	0.00	0.00	0.00
16,200.00	90.00	359.90	7,237.00	8,081.58	-2,449.15	8,406.08	0.00	0.00	0.00
16,300.00	90.00	359.90	7,237.00	8,181.58	-2,449.33	8,504.15	0.00	0.00	0.00
16,400.00	90.00	359.90	7,237.00	8,281.58	-2,449.51	8,602.21	0.00	0.00	0.00
16,500.00	90.00	359.90	7,237.00	8,381.58	-2,449.69	8,700.28	0.00	0.00	0.00
16,600.00	90.00	359.90	7,237.00	8,481.58	-2,449.87	8,798.34	0.00	0.00	0.00
16,700.00	90.00	359.90	7,237.00	8,581.58	-2,450.05	8,896.41	0.00	0.00	0.00
16,800.00	90.00	359.90	7,237.00	8,681.58	-2,450.23	8,994.48	0.00	0.00	0.00
16,900.00	90.00	359.90	7,237.00	8,781.58	-2,450.41	9,092.54	0.00	0.00	0.00
17,000.00	90.00	359.90	7,237.00	8,881.58	-2,450.59	9,190.61	0.00	0.00	0.00
17,100.00	90.00	359.90	7,237.00	8,981.58	-2,450.77	9,288.67	0.00	0.00	0.00
17,200.00	90.00	359.90	7,237.00	9,081.58	-2,450.95	9,386.74	0.00	0.00	0.00
17,300.00	90.00	359.90	7,237.00	9,181.58	-2,451.13	9,484.81	0.00	0.00	0.00
17,400.00	90.00	359.90	7,237.00	9,281.58	-2,451.31	9,582.87	0.00	0.00	0.00
17,500.00	90.00	359.90	7,237.00	9,381.58	-2,451.48	9,680.94	0.00	0.00	0.00
17,600.00	90.00	359.90	7,237.00	9,481.58	-2,451.66	9,779.01	0.00	0.00	0.00
17,700.00	90.00	359.90	7,237.00	9,581.58	-2,451.84	9,877.07	0.00	0.00	0.00
17,800.00	90.00	359.90	7,237.00	9,681.58	-2,452.02	9,975.14	0.00	0.00	0.00
17,900.00	90.00	359.90	7,237.00	9,781.58	-2,452.20	10,073.20	0.00	0.00	0.00
18,000.00	90.00	359.90	7,237.00	9,881.58	-2,452.38	10,171.27	0.00	0.00	0.00
18,100.00	90.00	359.90	7,237.00	9,981.58	-2,452.56	10,269.34	0.00	0.00	0.00
18,200.00	90.00	359.90	7,237.00	10,081.58	-2,452.74	10,367.40	0.00	0.00	0.00
18,300.00	90.00	359.90	7,237.00	10,181.58	-2,452.92	10,465.47	0.00	0.00	0.00
18,400.00	90.00	359.90	7,237.00	10,281.58	-2,453.10	10,563.54	0.00	0.00	0.00
18,500.00	90.00	359.90	7,237.00	10,381.57	-2,453.28	10,661.60	0.00	0.00	0.00
18,600.00	90.00	359.90	7,237.00	10,481.57	-2,453.46	10,759.67	0.00	0.00	0.00
18,700.00	90.00	359.90	7,237.00	10,581.57	-2,453.64	10,857.73	0.00	0.00	0.00
18,800.00	90.00	359.90	7,237.00	10,681.57	-2,453.82	10,955.80	0.00	0.00	0.00
18,900.00	90.00	359.90	7,237.00	10,781.57	-2,454.00	11,053.87	0.00	0.00	0.00
19,000.00	90.00	359.90	7,237.00	10,881.57	-2,454.18	11,151.93	0.00	0.00	0.00
19,100.00	90.00	359.90	7,237.00	10,981.57	-2,454.36	11,250.00	0.00	0.00	0.00
19,200.00	90.00	359.90	7,237.00	11,081.57	-2,454.54	11,348.06	0.00	0.00	0.00
19,300.00	90.00	359.90	7,237.00	11,181.57	-2,454.72	11,446.13	0.00	0.00	0.00
19,400.00	90.00	359.90	7,237.00	11,281.57	-2,454.90	11,544.20	0.00	0.00	0.00
19,500.00	90.00	359.90	7,237.00	11,381.57	-2,455.08	11,642.26	0.00	0.00	0.00
19,600.00	90.00	359.90	7,237.00	11,481.57	-2,455.26	11,740.33	0.00	0.00	0.00
19,700.00	90.00	359.90	7,237.00	11,581.57	-2,455.44	11,838.40	0.00	0.00	0.00
19,800.00	90.00	359.90	7,237.00	11,681.57	-2,455.62	11,936.46	0.00	0.00	0.00
19,900.00	90.00	359.90	7,237.00	11,781.57	-2,455.80	12,034.53	0.00	0.00	0.00
20,000.00	90.00	359.90	7,237.00	11,881.57	-2,455.98	12,132.59	0.00	0.00	0.00
20,100.00	90.00	359.90	7,237.00	11,981.57	-2,456.16	12,230.66	0.00	0.00	0.00



<b>Database:</b>	Casper District	<b>Local Co-ordinate Reference:</b>	Well Evans 30N-14B-XR
<b>Company:</b>	Synergy Resources Corp.	<b>TVD Reference:</b>	GL 4940 & KB 20 @ 4960.00ft (PD 462)
<b>Project:</b>	Weld County, CO NAD 83	<b>MD Reference:</b>	GL 4940 & KB 20 @ 4960.00ft (PD 462)
<b>Site:</b>	Evans 7-26 Pad	<b>North Reference:</b>	True
<b>Well:</b>	Evans 30N-14B-XR	<b>Survey Calculation Method:</b>	Minimum Curvature
<b>Wellbore:</b>	OH		
<b>Design:</b>	Plan #1		

Planned Survey									
Measured Depth (ft)	Inclination (°)	Azimuth (°)	Vertical Depth (ft)	+N/-S (ft)	+E/-W (ft)	Vertical Section (ft)	Dogleg Rate (°/100ft)	Build Rate (°/100ft)	Turn Rate (°/100ft)
20,200.00	90.00	359.90	7,237.00	12,081.57	-2,456.34	12,328.73	0.00	0.00	0.00
20,300.00	90.00	359.90	7,237.00	12,181.57	-2,456.52	12,426.79	0.00	0.00	0.00
20,313.38	90.00	359.90	7,237.00	12,194.96	-2,456.54	12,439.92	0.00	0.00	0.00
TD at 20313.38 - 30N-14B-XR(460 FNL 510 FWL) PBHL									

Design Targets									
Target Name	Dip Angle (°)	Dip Dir. (°)	TVD (ft)	+N/-S (ft)	+E/-W (ft)	Northing (usft)	Easting (usft)	Latitude	Longitude
- hit/miss target									
- Shape									
30N-14B-XR(460 FNL 5	0.00	0.00	7,237.00	12,194.96	-2,456.54	1,391,463.07	3,207,622.49	40.4055720	-104.7544550
- plan hits target center									
- Point									

Casing Points					
Measured Depth (ft)	Vertical Depth (ft)	Name	Casing Diameter (in)	Hole Diameter (in)	
1,775.80	1,700.00	9 5/8"	9.625	13.500	

Plan Annotations				
Measured Depth (ft)	Vertical Depth (ft)	Local Coordinates		Comment
		+N/-S (ft)	+E/-W (ft)	
200.00	200.00	0.00	0.00	Start Build 2.00
1,605.70	1,549.96	-73.05	-330.02	Start 3854.90 hold at 1605.70 MD
5,460.60	4,950.04	-465.62	-2,103.63	Start Drop -2.00
6,866.30	6,300.00	-538.67	-2,433.65	Start 416.13 hold at 6866.30 MD
7,282.43	6,716.13	-538.67	-2,433.65	Start DLS 11.00 TFO 359.90
8,100.61	7,237.00	-17.80	-2,434.59	Start 12212.78 hold at 8100.61 MD
20,313.38	7,237.00	12,194.96	-2,456.54	TD at 20313.38