



PROJECT DETAILS: Weld County, CO NAD 83

Geodetic System: US State Plane 1983
Datum: North American Datum 1983
Ellipsoid: GRS 1980
Zone: Colorado Northern Zone
System Datum: Mean Sea Level
Local North: True

Project: Weld County, CO NAD 83
Site: Evans 7-26 Pad
Well: Evans 10N-14C-L
Wellbore: OH
Design: Plan #1



Azimuths to True North
Magnetic North: 8.48°



Magnetic Field
Strength: 52529.7nT
Dip Angle: 66.93°
Date: 3/9/2016
Model: BGGM2015

SECTION DETAILS

MD	Inc	Azi	TVD	+N/-S	+E/-W	Dleg	TFace	VSect
0.00	0.00	0.00	0.00	0.00	0.00	0.00	0.00	0.00
1400.00	0.00	0.00	1400.00	0.00	0.00	0.00	0.00	0.00
1921.37	10.43	176.12	1918.50	-47.20	3.20	2.00	176.12	-47.19
5544.20	10.43	176.12	5481.50	-701.41	47.51	0.00	0.00	-701.24
6065.58	0.00	0.00	6000.00	-748.61	50.71	2.00	180.00	-748.43
6839.71	0.00	0.00	6774.13	-748.61	50.71	0.00	0.00	-748.43
7655.60	89.75	359.89	7295.00	-230.03	49.72	11.00	359.89	-229.86
17226.31	89.75	359.89	7337.00	9340.57	31.47	0.00	0.00	9340.63

DESIGN TARGET DETAILS

Name	TVD	+N/-S	+E/-W	Northing	Easting	Latitude	Longitude	Shape
PBHL	7337.00	9340.57	31.47	1388814.24	3210556.77	40.3982330	-104.7440000	Point
- plan hits target center								

WELL DETAILS: Evans 10N-14C-L

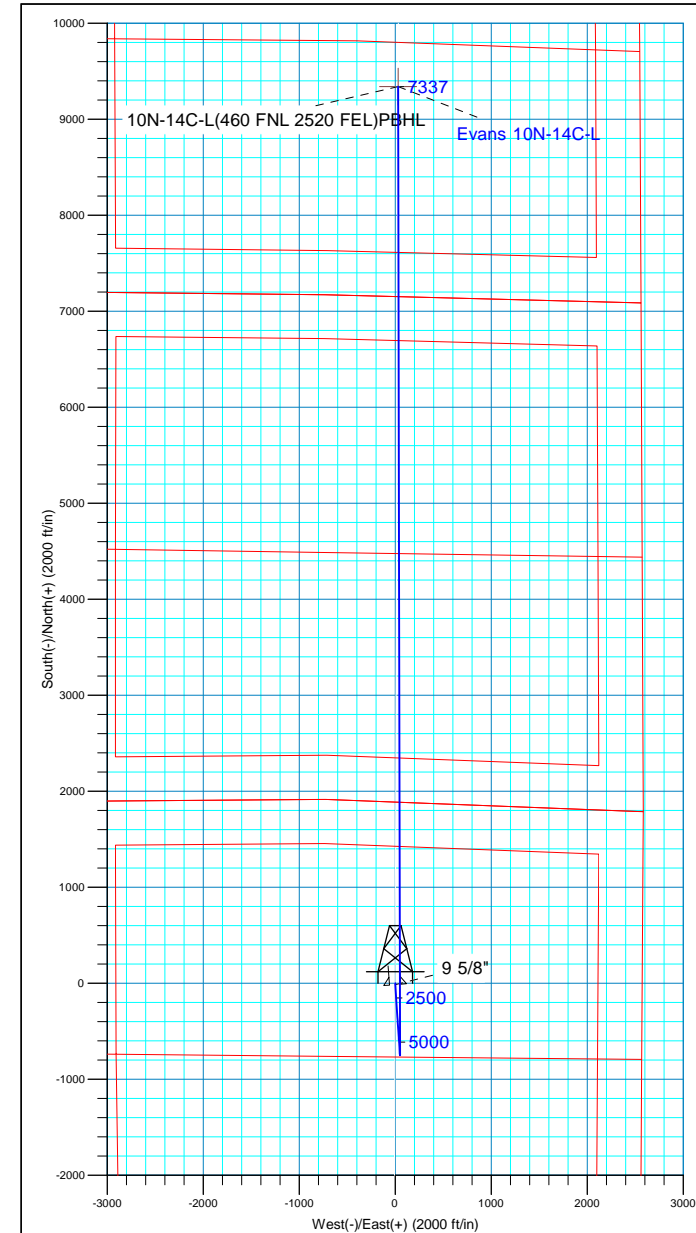
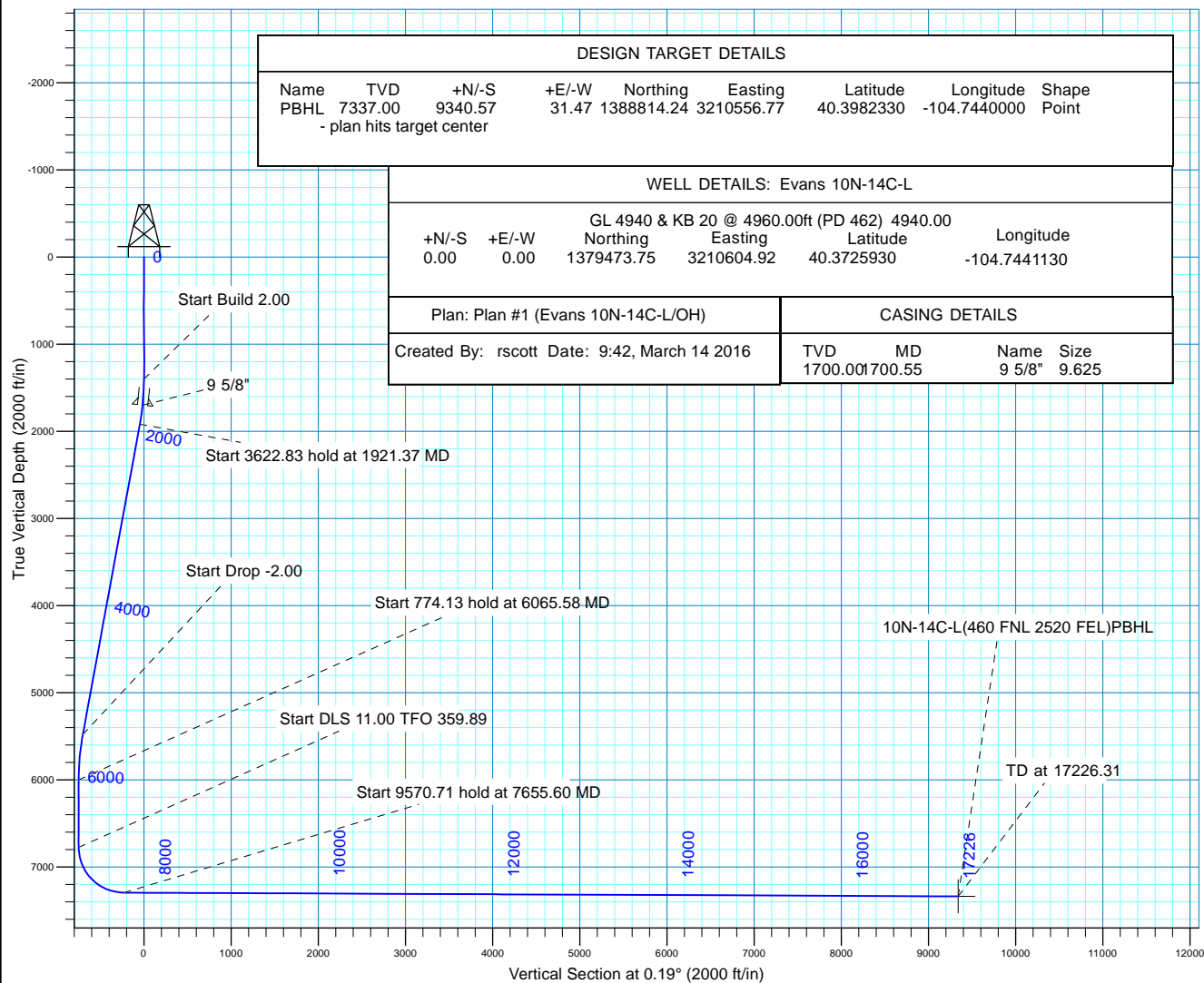
GL 4940 & KB 20 @ 4960.00ft (PD 462) 4940.00							
+N/-S	+E/-W	Northing	Easting	Latitude	Longitude		
0.00	0.00	1379473.75	3210604.92	40.3725930	-104.7441130		

Plan: Plan #1 (Evans 10N-14C-L/OH)

CASING DETAILS

Created By: rscott Date: 9:42, March 14 2016

TVD	MD	Name	Size
1700.00	700.55	9 5/8"	9.625





Synergy Resources Corp.

Weld County, CO NAD 83

Evans 7-26 Pad

Evans 10N-14C-L

OH

Plan: Plan #1

Standard Planning Report

13 March, 2016



Database:	Casper District	Local Co-ordinate Reference:	Well Evans 10N-14C-L
Company:	Synergy Resources Corp.	TVD Reference:	GL 4940 & KB 20 @ 4960.00ft (PD 462)
Project:	Weld County, CO NAD 83	MD Reference:	GL 4940 & KB 20 @ 4960.00ft (PD 462)
Site:	Evans 7-26 Pad	North Reference:	True
Well:	Evans 10N-14C-L	Survey Calculation Method:	Minimum Curvature
Wellbore:	OH		
Design:	Plan #1		

Project	Weld County, CO NAD 83		
Map System:	US State Plane 1983	System Datum:	Mean Sea Level
Geo Datum:	North American Datum 1983		
Map Zone:	Colorado Northern Zone		

Site		Evans 7-26 Pad, SECTION 26 T5N R66W			
Site Position:		Northing:	1,379,289.48 usft	Latitude:	40.3720970
From:	Lat/Long	Easting:	3,210,182.68 usft	Longitude:	-104.7456340
Position Uncertainty:	3.28 ft	Slot Radius:	13.200 in	Grid Convergence:	0.49 °

Well	Evans 10N-14C-L, 1885 FNL 2575 FEL					
Well Position	+N/-S	180.68 ft	Northing:	1,379,473.76 usft	Latitude:	40.3725930
	+E/-W	423.79 ft	Easting:	3,210,604.92 usft	Longitude:	-104.7441130
Position Uncertainty		3.28 ft	Wellhead Elevation:	0.00 ft	Ground Level:	4,940.00 ft

Wellbore	OH				
Magnetics	Model Name	Sample Date	Declination (°)	Dip Angle (°)	Field Strength (nT)
	BGGM2015	3/9/2016	8.48	66.93	52,530

Design	Plan #1			
Audit Notes:				
Version:	Phase:	PLAN	Tie On Depth:	0.00
Vertical Section:	Depth From (TVD) (ft)	+N/-S (ft)	+E/-W (ft)	Direction (°)
	0.00	0.00	0.00	0.19

Plan Sections										
Measured Depth (ft)	Inclination (°)	Azimuth (°)	Vertical Depth (ft)	+N/-S (ft)	+E/-W (ft)	Dogleg Rate (°/100ft)	Build Rate (°/100ft)	Turn Rate (°/100ft)	TFO (°)	Target
0.00	0.00	0.00	0.00	0.00	0.00	0.00	0.00	0.00	0.00	
1,400.00	0.00	0.00	1,400.00	0.00	0.00	0.00	0.00	0.00	0.00	
1,921.37	10.43	176.12	1,918.50	-47.20	3.20	2.00	2.00	0.00	176.12	
5,544.20	10.43	176.12	5,481.50	-701.41	47.51	0.00	0.00	0.00	0.00	
6,065.58	0.00	0.00	6,000.00	-748.61	50.71	2.00	-2.00	0.00	180.00	
6,839.71	0.00	0.00	6,774.13	-748.61	50.71	0.00	0.00	0.00	0.00	
7,655.60	89.75	359.89	7,295.00	-230.03	49.72	11.00	11.00	-0.01	359.89	
17,226.31	89.75	359.89	7,337.00	9,340.57	31.47	0.00	0.00	0.00	0.00	10N-14C-L(460 FNL 2

Database:	Casper District	Local Co-ordinate Reference:	Well Evans 10N-14C-L
Company:	Synergy Resources Corp.	TVD Reference:	GL 4940 & KB 20 @ 4960.00ft (PD 462)
Project:	Weld County, CO NAD 83	MD Reference:	GL 4940 & KB 20 @ 4960.00ft (PD 462)
Site:	Evans 7-26 Pad	North Reference:	True
Well:	Evans 10N-14C-L	Survey Calculation Method:	Minimum Curvature
Wellbore:	OH		
Design:	Plan #1		

Planned Survey									
Measured Depth (ft)	Inclination (°)	Azimuth (°)	Vertical Depth (ft)	+N/-S (ft)	+E/-W (ft)	Vertical Section (ft)	Dogleg Rate (°/100ft)	Build Rate (°/100ft)	Turn Rate (°/100ft)
0.00	0.00	0.00	0.00	0.00	0.00	0.00	0.00	0.00	0.00
100.00	0.00	0.00	100.00	0.00	0.00	0.00	0.00	0.00	0.00
200.00	0.00	0.00	200.00	0.00	0.00	0.00	0.00	0.00	0.00
300.00	0.00	0.00	300.00	0.00	0.00	0.00	0.00	0.00	0.00
400.00	0.00	0.00	400.00	0.00	0.00	0.00	0.00	0.00	0.00
500.00	0.00	0.00	500.00	0.00	0.00	0.00	0.00	0.00	0.00
600.00	0.00	0.00	600.00	0.00	0.00	0.00	0.00	0.00	0.00
700.00	0.00	0.00	700.00	0.00	0.00	0.00	0.00	0.00	0.00
800.00	0.00	0.00	800.00	0.00	0.00	0.00	0.00	0.00	0.00
900.00	0.00	0.00	900.00	0.00	0.00	0.00	0.00	0.00	0.00
1,000.00	0.00	0.00	1,000.00	0.00	0.00	0.00	0.00	0.00	0.00
1,100.00	0.00	0.00	1,100.00	0.00	0.00	0.00	0.00	0.00	0.00
1,200.00	0.00	0.00	1,200.00	0.00	0.00	0.00	0.00	0.00	0.00
1,300.00	0.00	0.00	1,300.00	0.00	0.00	0.00	0.00	0.00	0.00
1,400.00	0.00	0.00	1,400.00	0.00	0.00	0.00	0.00	0.00	0.00
Start Build 2.00									
1,500.00	2.00	176.12	1,499.98	-1.74	0.12	-1.74	2.00	2.00	0.00
1,600.00	4.00	176.12	1,599.84	-6.96	0.47	-6.96	2.00	2.00	0.00
1,700.00	6.00	176.12	1,699.45	-15.66	1.06	-15.65	2.00	2.00	0.00
1,700.55	6.01	176.12	1,700.00	-15.72	1.06	-15.71	2.00	2.00	0.00
9 5/8"									
1,800.00	8.00	176.12	1,798.70	-27.82	1.88	-27.81	2.00	2.00	0.00
1,900.00	10.00	176.12	1,897.47	-43.42	2.94	-43.41	2.00	2.00	0.00
1,921.37	10.43	176.12	1,918.50	-47.20	3.20	-47.19	2.00	2.00	0.00
Start 3622.83 hold at 1921.37 MD									
2,000.00	10.43	176.12	1,995.83	-61.40	4.16	-61.39	0.00	0.00	0.00
2,100.00	10.43	176.12	2,094.18	-79.46	5.38	-79.44	0.00	0.00	0.00
2,200.00	10.43	176.12	2,192.53	-97.52	6.61	-97.50	0.00	0.00	0.00
2,300.00	10.43	176.12	2,290.87	-115.58	7.83	-115.55	0.00	0.00	0.00
2,400.00	10.43	176.12	2,389.22	-133.63	9.05	-133.60	0.00	0.00	0.00
2,500.00	10.43	176.12	2,487.57	-151.69	10.28	-151.66	0.00	0.00	0.00
2,600.00	10.43	176.12	2,585.92	-169.75	11.50	-169.71	0.00	0.00	0.00
2,700.00	10.43	176.12	2,684.27	-187.81	12.72	-187.76	0.00	0.00	0.00
2,800.00	10.43	176.12	2,782.62	-205.86	13.95	-205.82	0.00	0.00	0.00
2,900.00	10.43	176.12	2,880.96	-223.92	15.17	-223.87	0.00	0.00	0.00
3,000.00	10.43	176.12	2,979.31	-241.98	16.39	-241.92	0.00	0.00	0.00
3,100.00	10.43	176.12	3,077.66	-260.04	17.61	-259.98	0.00	0.00	0.00
3,200.00	10.43	176.12	3,176.01	-278.10	18.84	-278.03	0.00	0.00	0.00
3,300.00	10.43	176.12	3,274.36	-296.15	20.06	-296.08	0.00	0.00	0.00
3,400.00	10.43	176.12	3,372.71	-314.21	21.28	-314.14	0.00	0.00	0.00
3,500.00	10.43	176.12	3,471.06	-332.27	22.51	-332.19	0.00	0.00	0.00
3,600.00	10.43	176.12	3,569.40	-350.33	23.73	-350.24	0.00	0.00	0.00
3,700.00	10.43	176.12	3,667.75	-368.38	24.95	-368.30	0.00	0.00	0.00
3,800.00	10.43	176.12	3,766.10	-386.44	26.18	-386.35	0.00	0.00	0.00
3,900.00	10.43	176.12	3,864.45	-404.50	27.40	-404.40	0.00	0.00	0.00
4,000.00	10.43	176.12	3,962.80	-422.56	28.62	-422.46	0.00	0.00	0.00
4,100.00	10.43	176.12	4,061.15	-440.61	29.85	-440.51	0.00	0.00	0.00
4,200.00	10.43	176.12	4,159.49	-458.67	31.07	-458.57	0.00	0.00	0.00
4,300.00	10.43	176.12	4,257.84	-476.73	32.29	-476.62	0.00	0.00	0.00
4,400.00	10.43	176.12	4,356.19	-494.79	33.52	-494.67	0.00	0.00	0.00
4,500.00	10.43	176.12	4,454.54	-512.85	34.74	-512.73	0.00	0.00	0.00
4,600.00	10.43	176.12	4,552.89	-530.90	35.96	-530.78	0.00	0.00	0.00
4,700.00	10.43	176.12	4,651.24	-548.96	37.19	-548.83	0.00	0.00	0.00

Database:	Casper District	Local Co-ordinate Reference:	Well Evans 10N-14C-L
Company:	Synergy Resources Corp.	TVD Reference:	GL 4940 & KB 20 @ 4960.00ft (PD 462)
Project:	Weld County, CO NAD 83	MD Reference:	GL 4940 & KB 20 @ 4960.00ft (PD 462)
Site:	Evans 7-26 Pad	North Reference:	True
Well:	Evans 10N-14C-L	Survey Calculation Method:	Minimum Curvature
Wellbore:	OH		
Design:	Plan #1		

Planned Survey									
Measured Depth (ft)	Inclination (°)	Azimuth (°)	Vertical Depth (ft)	+N/-S (ft)	+E/-W (ft)	Vertical Section (ft)	Dogleg Rate (°/100ft)	Build Rate (°/100ft)	Turn Rate (°/100ft)
4,800.00	10.43	176.12	4,749.59	-567.02	38.41	-566.89	0.00	0.00	0.00
4,900.00	10.43	176.12	4,847.93	-585.08	39.63	-584.94	0.00	0.00	0.00
5,000.00	10.43	176.12	4,946.28	-603.13	40.86	-602.99	0.00	0.00	0.00
5,100.00	10.43	176.12	5,044.63	-621.19	42.08	-621.05	0.00	0.00	0.00
5,200.00	10.43	176.12	5,142.98	-639.25	43.30	-639.10	0.00	0.00	0.00
5,300.00	10.43	176.12	5,241.33	-657.31	44.53	-657.15	0.00	0.00	0.00
5,400.00	10.43	176.12	5,339.68	-675.37	45.75	-675.21	0.00	0.00	0.00
5,500.00	10.43	176.12	5,438.02	-693.42	46.97	-693.26	0.00	0.00	0.00
5,544.20	10.43	176.12	5,481.50	-701.41	47.51	-701.24	0.00	0.00	0.00
Start Drop -2.00									
5,600.00	9.31	176.12	5,536.47	-710.95	48.16	-710.78	2.00	-2.00	0.00
5,700.00	7.31	176.12	5,635.41	-725.37	49.14	-725.20	2.00	-2.00	0.00
5,800.00	5.31	176.12	5,734.80	-736.34	49.88	-736.16	2.00	-2.00	0.00
5,900.00	3.31	176.12	5,834.51	-743.84	50.39	-743.66	2.00	-2.00	0.00
6,000.00	1.31	176.12	5,934.43	-747.86	50.66	-747.69	2.00	-2.00	0.00
6,065.58	0.00	0.00	6,000.00	-748.61	50.71	-748.43	2.00	-2.00	0.00
Start 774.13 hold at 6065.58 MD									
6,100.00	0.00	0.00	6,034.42	-748.61	50.71	-748.43	0.00	0.00	0.00
6,200.00	0.00	0.00	6,134.42	-748.61	50.71	-748.43	0.00	0.00	0.00
6,300.00	0.00	0.00	6,234.42	-748.61	50.71	-748.43	0.00	0.00	0.00
6,400.00	0.00	0.00	6,334.42	-748.61	50.71	-748.43	0.00	0.00	0.00
6,500.00	0.00	0.00	6,434.42	-748.61	50.71	-748.43	0.00	0.00	0.00
6,600.00	0.00	0.00	6,534.42	-748.61	50.71	-748.43	0.00	0.00	0.00
6,700.00	0.00	0.00	6,634.42	-748.61	50.71	-748.43	0.00	0.00	0.00
6,800.00	0.00	0.00	6,734.42	-748.61	50.71	-748.43	0.00	0.00	0.00
6,839.71	0.00	0.00	6,774.13	-748.61	50.71	-748.43	0.00	0.00	0.00
Start DLS 11.00 TFO 359.89									
6,900.00	6.63	359.89	6,834.29	-745.12	50.70	-744.95	11.00	11.00	0.00
7,000.00	17.63	359.89	6,931.90	-724.14	50.66	-723.97	11.00	11.00	0.00
7,100.00	28.63	359.89	7,023.72	-684.92	50.59	-684.74	11.00	11.00	0.00
7,200.00	39.63	359.89	7,106.37	-628.89	50.48	-628.72	11.00	11.00	0.00
7,300.00	50.63	359.89	7,176.81	-558.13	50.35	-557.95	11.00	11.00	0.00
7,400.00	61.63	359.89	7,232.45	-475.22	50.19	-475.05	11.00	11.00	0.00
7,500.00	72.63	359.89	7,271.25	-383.22	50.01	-383.05	11.00	11.00	0.00
7,600.00	83.63	359.89	7,291.79	-285.51	49.83	-285.34	11.00	11.00	0.00
7,655.60	89.75	359.89	7,295.00	-230.03	49.72	-229.86	11.00	11.00	0.00
Start 9570.71 hold at 7655.60 MD									
7,700.00	89.75	359.89	7,295.19	-185.63	49.64	-185.46	0.00	0.00	0.00
7,800.00	89.75	359.89	7,295.63	-85.63	49.45	-85.47	0.00	0.00	0.00
7,900.00	89.75	359.89	7,296.07	14.37	49.26	14.53	0.00	0.00	0.00
8,000.00	89.75	359.89	7,296.51	114.37	49.06	114.53	0.00	0.00	0.00
8,100.00	89.75	359.89	7,296.95	214.36	48.87	214.53	0.00	0.00	0.00
8,200.00	89.75	359.89	7,297.39	314.36	48.68	314.53	0.00	0.00	0.00
8,300.00	89.75	359.89	7,297.82	414.36	48.49	414.52	0.00	0.00	0.00
8,400.00	89.75	359.89	7,298.26	514.36	48.30	514.52	0.00	0.00	0.00
8,500.00	89.75	359.89	7,298.70	614.36	48.11	614.52	0.00	0.00	0.00
8,600.00	89.75	359.89	7,299.14	714.36	47.92	714.52	0.00	0.00	0.00
8,700.00	89.75	359.89	7,299.58	814.36	47.73	814.51	0.00	0.00	0.00
8,800.00	89.75	359.89	7,300.02	914.36	47.54	914.51	0.00	0.00	0.00
8,900.00	89.75	359.89	7,300.46	1,014.35	47.35	1,014.51	0.00	0.00	0.00
9,000.00	89.75	359.89	7,300.90	1,114.35	47.16	1,114.51	0.00	0.00	0.00
9,100.00	89.75	359.89	7,301.34	1,214.35	46.97	1,214.50	0.00	0.00	0.00
9,200.00	89.75	359.89	7,301.77	1,314.35	46.78	1,314.50	0.00	0.00	0.00
9,300.00	89.75	359.89	7,302.21	1,414.35	46.59	1,414.50	0.00	0.00	0.00

Database:	Casper District	Local Co-ordinate Reference:	Well Evans 10N-14C-L
Company:	Synergy Resources Corp.	TVD Reference:	GL 4940 & KB 20 @ 4960.00ft (PD 462)
Project:	Weld County, CO NAD 83	MD Reference:	GL 4940 & KB 20 @ 4960.00ft (PD 462)
Site:	Evans 7-26 Pad	North Reference:	True
Well:	Evans 10N-14C-L	Survey Calculation Method:	Minimum Curvature
Wellbore:	OH		
Design:	Plan #1		

Planned Survey									
Measured Depth (ft)	Inclination (°)	Azimuth (°)	Vertical Depth (ft)	+N/-S (ft)	+E/-W (ft)	Vertical Section (ft)	Dogleg Rate (°/100ft)	Build Rate (°/100ft)	Turn Rate (°/100ft)
9,400.00	89.75	359.89	7,302.65	1,514.35	46.40	1,514.50	0.00	0.00	0.00
9,500.00	89.75	359.89	7,303.09	1,614.35	46.20	1,614.49	0.00	0.00	0.00
9,600.00	89.75	359.89	7,303.53	1,714.35	46.01	1,714.49	0.00	0.00	0.00
9,700.00	89.75	359.89	7,303.97	1,814.35	45.82	1,814.49	0.00	0.00	0.00
9,800.00	89.75	359.89	7,304.41	1,914.34	45.63	1,914.49	0.00	0.00	0.00
9,900.00	89.75	359.89	7,304.85	2,014.34	45.44	2,014.49	0.00	0.00	0.00
10,000.00	89.75	359.89	7,305.29	2,114.34	45.25	2,114.48	0.00	0.00	0.00
10,100.00	89.75	359.89	7,305.72	2,214.34	45.06	2,214.48	0.00	0.00	0.00
10,200.00	89.75	359.89	7,306.16	2,314.34	44.87	2,314.48	0.00	0.00	0.00
10,300.00	89.75	359.89	7,306.60	2,414.34	44.68	2,414.48	0.00	0.00	0.00
10,400.00	89.75	359.89	7,307.04	2,514.34	44.49	2,514.47	0.00	0.00	0.00
10,500.00	89.75	359.89	7,307.48	2,614.34	44.30	2,614.47	0.00	0.00	0.00
10,600.00	89.75	359.89	7,307.92	2,714.34	44.11	2,714.47	0.00	0.00	0.00
10,700.00	89.75	359.89	7,308.36	2,814.33	43.92	2,814.47	0.00	0.00	0.00
10,800.00	89.75	359.89	7,308.80	2,914.33	43.73	2,914.46	0.00	0.00	0.00
10,900.00	89.75	359.89	7,309.23	3,014.33	43.54	3,014.46	0.00	0.00	0.00
11,000.00	89.75	359.89	7,309.67	3,114.33	43.34	3,114.46	0.00	0.00	0.00
11,100.00	89.75	359.89	7,310.11	3,214.33	43.15	3,214.46	0.00	0.00	0.00
11,200.00	89.75	359.89	7,310.55	3,314.33	42.96	3,314.45	0.00	0.00	0.00
11,300.00	89.75	359.89	7,310.99	3,414.33	42.77	3,414.45	0.00	0.00	0.00
11,400.00	89.75	359.89	7,311.43	3,514.33	42.58	3,514.45	0.00	0.00	0.00
11,500.00	89.75	359.89	7,311.87	3,614.33	42.39	3,614.45	0.00	0.00	0.00
11,600.00	89.75	359.89	7,312.31	3,714.32	42.20	3,714.45	0.00	0.00	0.00
11,700.00	89.75	359.89	7,312.75	3,814.32	42.01	3,814.44	0.00	0.00	0.00
11,800.00	89.75	359.89	7,313.18	3,914.32	41.82	3,914.44	0.00	0.00	0.00
11,900.00	89.75	359.89	7,313.62	4,014.32	41.63	4,014.44	0.00	0.00	0.00
12,000.00	89.75	359.89	7,314.06	4,114.32	41.44	4,114.44	0.00	0.00	0.00
12,100.00	89.75	359.89	7,314.50	4,214.32	41.25	4,214.43	0.00	0.00	0.00
12,200.00	89.75	359.89	7,314.94	4,314.32	41.06	4,314.43	0.00	0.00	0.00
12,300.00	89.75	359.89	7,315.38	4,414.32	40.87	4,414.43	0.00	0.00	0.00
12,400.00	89.75	359.89	7,315.82	4,514.31	40.67	4,514.43	0.00	0.00	0.00
12,500.00	89.75	359.89	7,316.26	4,614.31	40.48	4,614.42	0.00	0.00	0.00
12,600.00	89.75	359.89	7,316.70	4,714.31	40.29	4,714.42	0.00	0.00	0.00
12,700.00	89.75	359.89	7,317.13	4,814.31	40.10	4,814.42	0.00	0.00	0.00
12,800.00	89.75	359.89	7,317.57	4,914.31	39.91	4,914.42	0.00	0.00	0.00
12,900.00	89.75	359.89	7,318.01	5,014.31	39.72	5,014.41	0.00	0.00	0.00
13,000.00	89.75	359.89	7,318.45	5,114.31	39.53	5,114.41	0.00	0.00	0.00
13,100.00	89.75	359.89	7,318.89	5,214.31	39.34	5,214.41	0.00	0.00	0.00
13,200.00	89.75	359.89	7,319.33	5,314.31	39.15	5,314.41	0.00	0.00	0.00
13,300.00	89.75	359.89	7,319.77	5,414.30	38.96	5,414.41	0.00	0.00	0.00
13,400.00	89.75	359.89	7,320.21	5,514.30	38.77	5,514.40	0.00	0.00	0.00
13,500.00	89.75	359.89	7,320.65	5,614.30	38.58	5,614.40	0.00	0.00	0.00
13,600.00	89.75	359.89	7,321.08	5,714.30	38.39	5,714.40	0.00	0.00	0.00
13,700.00	89.75	359.89	7,321.52	5,814.30	38.20	5,814.40	0.00	0.00	0.00
13,800.00	89.75	359.89	7,321.96	5,914.30	38.01	5,914.39	0.00	0.00	0.00
13,900.00	89.75	359.89	7,322.40	6,014.30	37.81	6,014.39	0.00	0.00	0.00
14,000.00	89.75	359.89	7,322.84	6,114.30	37.62	6,114.39	0.00	0.00	0.00
14,100.00	89.75	359.89	7,323.28	6,214.30	37.43	6,214.39	0.00	0.00	0.00
14,200.00	89.75	359.89	7,323.72	6,314.29	37.24	6,314.38	0.00	0.00	0.00
14,300.00	89.75	359.89	7,324.16	6,414.29	37.05	6,414.38	0.00	0.00	0.00
14,400.00	89.75	359.89	7,324.60	6,514.29	36.86	6,514.38	0.00	0.00	0.00
14,500.00	89.75	359.89	7,325.03	6,614.29	36.67	6,614.38	0.00	0.00	0.00
14,600.00	89.75	359.89	7,325.47	6,714.29	36.48	6,714.37	0.00	0.00	0.00
14,700.00	89.75	359.89	7,325.91	6,814.29	36.29	6,814.37	0.00	0.00	0.00

Database:	Casper District	Local Co-ordinate Reference:	Well Evans 10N-14C-L
Company:	Synergy Resources Corp.	TVD Reference:	GL 4940 & KB 20 @ 4960.00ft (PD 462)
Project:	Weld County, CO NAD 83	MD Reference:	GL 4940 & KB 20 @ 4960.00ft (PD 462)
Site:	Evans 7-26 Pad	North Reference:	True
Well:	Evans 10N-14C-L	Survey Calculation Method:	Minimum Curvature
Wellbore:	OH		
Design:	Plan #1		

Planned Survey									
Measured Depth (ft)	Inclination (°)	Azimuth (°)	Vertical Depth (ft)	+N/-S (ft)	+E/-W (ft)	Vertical Section (ft)	Dogleg Rate (°/100ft)	Build Rate (°/100ft)	Turn Rate (°/100ft)
14,800.00	89.75	359.89	7,326.35	6,914.29	36.10	6,914.37	0.00	0.00	0.00
14,900.00	89.75	359.89	7,326.79	7,014.29	35.91	7,014.37	0.00	0.00	0.00
15,000.00	89.75	359.89	7,327.23	7,114.29	35.72	7,114.37	0.00	0.00	0.00
15,100.00	89.75	359.89	7,327.67	7,214.28	35.53	7,214.36	0.00	0.00	0.00
15,200.00	89.75	359.89	7,328.11	7,314.28	35.34	7,314.36	0.00	0.00	0.00
15,300.00	89.75	359.89	7,328.55	7,414.28	35.15	7,414.36	0.00	0.00	0.00
15,400.00	89.75	359.89	7,328.98	7,514.28	34.95	7,514.36	0.00	0.00	0.00
15,500.00	89.75	359.89	7,329.42	7,614.28	34.76	7,614.35	0.00	0.00	0.00
15,600.00	89.75	359.89	7,329.86	7,714.28	34.57	7,714.35	0.00	0.00	0.00
15,700.00	89.75	359.89	7,330.30	7,814.28	34.38	7,814.35	0.00	0.00	0.00
15,800.00	89.75	359.89	7,330.74	7,914.28	34.19	7,914.35	0.00	0.00	0.00
15,900.00	89.75	359.89	7,331.18	8,014.27	34.00	8,014.34	0.00	0.00	0.00
16,000.00	89.75	359.89	7,331.62	8,114.27	33.81	8,114.34	0.00	0.00	0.00
16,100.00	89.75	359.89	7,332.06	8,214.27	33.62	8,214.34	0.00	0.00	0.00
16,200.00	89.75	359.89	7,332.50	8,314.27	33.43	8,314.34	0.00	0.00	0.00
16,300.00	89.75	359.89	7,332.93	8,414.27	33.24	8,414.33	0.00	0.00	0.00
16,400.00	89.75	359.89	7,333.37	8,514.27	33.05	8,514.33	0.00	0.00	0.00
16,500.00	89.75	359.89	7,333.81	8,614.27	32.86	8,614.33	0.00	0.00	0.00
16,600.00	89.75	359.89	7,334.25	8,714.27	32.67	8,714.33	0.00	0.00	0.00
16,700.00	89.75	359.89	7,334.69	8,814.27	32.48	8,814.33	0.00	0.00	0.00
16,800.00	89.75	359.89	7,335.13	8,914.26	32.29	8,914.32	0.00	0.00	0.00
16,900.00	89.75	359.89	7,335.57	9,014.26	32.09	9,014.32	0.00	0.00	0.00
17,000.00	89.75	359.89	7,336.01	9,114.26	31.90	9,114.32	0.00	0.00	0.00
17,100.00	89.75	359.89	7,336.45	9,214.26	31.71	9,214.32	0.00	0.00	0.00
17,200.00	89.75	359.89	7,336.88	9,314.26	31.52	9,314.31	0.00	0.00	0.00
17,226.31	89.75	359.89	7,337.00	9,340.57	31.47	9,340.63	0.00	0.00	0.00
TD at 17226.31 - 10N-14C-L(460 FNL 2520 FEL)PBHL									

Design Targets									
Target Name	Dip Angle (°)	Dip Dir. (°)	TVD (ft)	+N/-S (ft)	+E/-W (ft)	Northing (usft)	Easting (usft)	Latitude	Longitude
10N-14C-L(460 FNL 252	0.00	0.00	7,337.00	9,340.57	31.47	1,388,814.24	3,210,556.77	40.3982330	-104.7440000
- hit/miss target									
- Shape									
- plan hits target center									
- Point									

Casing Points					
Measured Depth (ft)	Vertical Depth (ft)	Name	Casing Diameter (in)	Hole Diameter (in)	
1,700.55	1,700.00	9 5/8"	9.625	13.500	

Database:	Casper District	Local Co-ordinate Reference:	Well Evans 10N-14C-L
Company:	Synergy Resources Corp.	TVD Reference:	GL 4940 & KB 20 @ 4960.00ft (PD 462)
Project:	Weld County, CO NAD 83	MD Reference:	GL 4940 & KB 20 @ 4960.00ft (PD 462)
Site:	Evans 7-26 Pad	North Reference:	True
Well:	Evans 10N-14C-L	Survey Calculation Method:	Minimum Curvature
Wellbore:	OH		
Design:	Plan #1		

Plan Annotations				
Measured Depth (ft)	Vertical Depth (ft)	Local Coordinates		Comment
		+N/-S (ft)	+E/-W (ft)	
1,400.00	1,400.00	0.00	0.00	Start Build 2.00
1,921.37	1,918.50	-47.20	3.20	Start 3622.83 hold at 1921.37 MD
5,544.20	5,481.50	-701.41	47.51	Start Drop -2.00
6,065.58	6,000.00	-748.61	50.71	Start 774.13 hold at 6065.58 MD
6,839.71	6,774.13	-748.61	50.71	Start DLS 11.00 TFO 359.89
7,655.60	7,295.00	-230.03	49.72	Start 9570.71 hold at 7655.60 MD
17,226.31	7,337.00	9,340.57	31.47	TD at 17226.31