



PROJECT DETAILS: Weld County, CO NAD 83

Geodetic System: US State Plane 1983
Datum: North American Datum 1983
Ellipsoid: GRS 1980
Zone: Colorado Northern Zone
System Datum: Mean Sea Level
Local North: True

Project: Weld County, CO NAD 83
Site: Evans 7-26 Pad
Well: Evans 24C-14-L
Wellbore: OH
Design: Plan #1



Azimuths to True North
Magnetic North: 8.48°



Magnetic Field
Strength: 52529.5nT
Dip Angle: 66.93°
Date: 3/9/2016
Model: BGGM2015

SECTION DETAILS

MD	Inc	Azi	TVD	+N/-S	+E/-W	Dleg	TFace	V Sect
0.00	0.00	0.00	0.00	0.00	0.00	0.00	0.00	0.00
1000.00	0.00	0.00	1000.00	0.00	0.00	0.00	0.00	0.00
1896.22	17.92	117.02	1881.68	-63.17	123.87	2.00	117.02	-45.92
5718.39	17.92	117.02	5518.32	-597.62	1171.77	0.00	0.00	-434.40
6614.61	0.00	0.00	6400.00	-660.79	1295.64	2.00	180.00	-480.32
7101.74	0.00	0.00	6887.13	-660.79	1295.64	0.00	0.00	-480.32
7920.31	90.04	359.89	7408.00	-139.54	1294.65	11.00	359.89	36.05
17453.65	90.04	359.89	7401.00	9393.79	1276.45	0.00	0.00	9480.12

DESIGN TARGET DETAILS

Name	TVD	+N/-S	+E/-W	Northing	Easting	Latitude	Longitude	Shape
PBHL	7401.00	9393.79	1276.45	1388777.89	3211802.38	40.3981040	-104.7395290	Point
- plan hits target center								

WELL DETAILS: Evans 24C-14-L

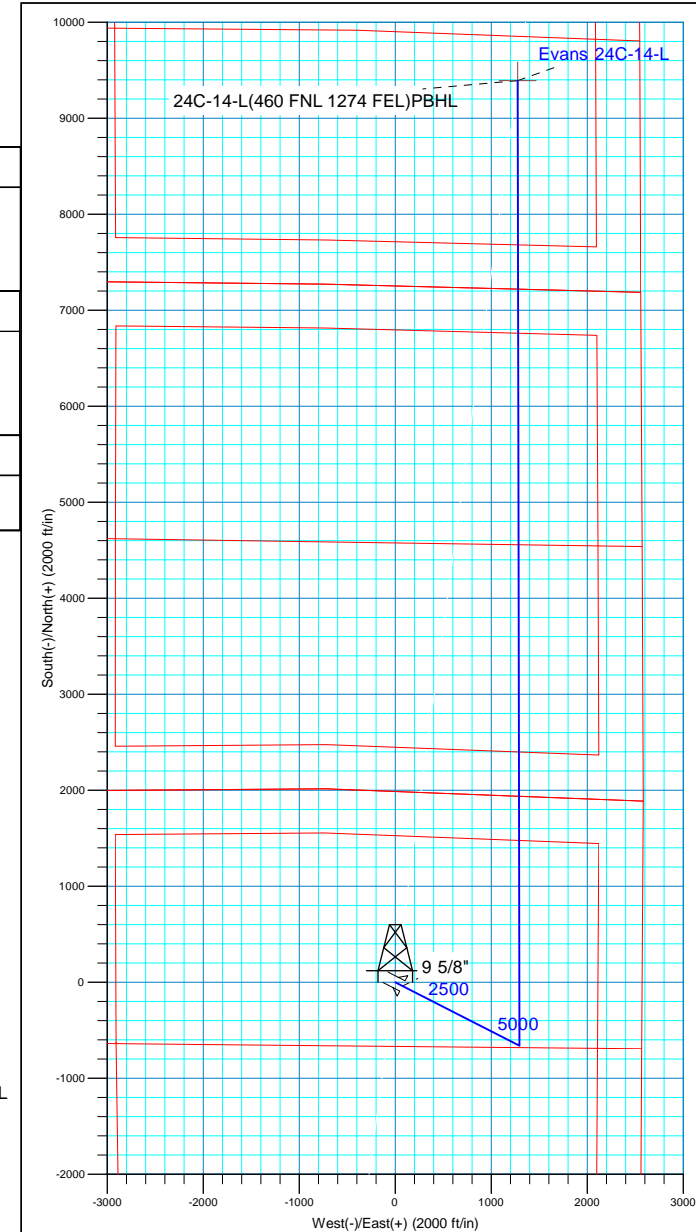
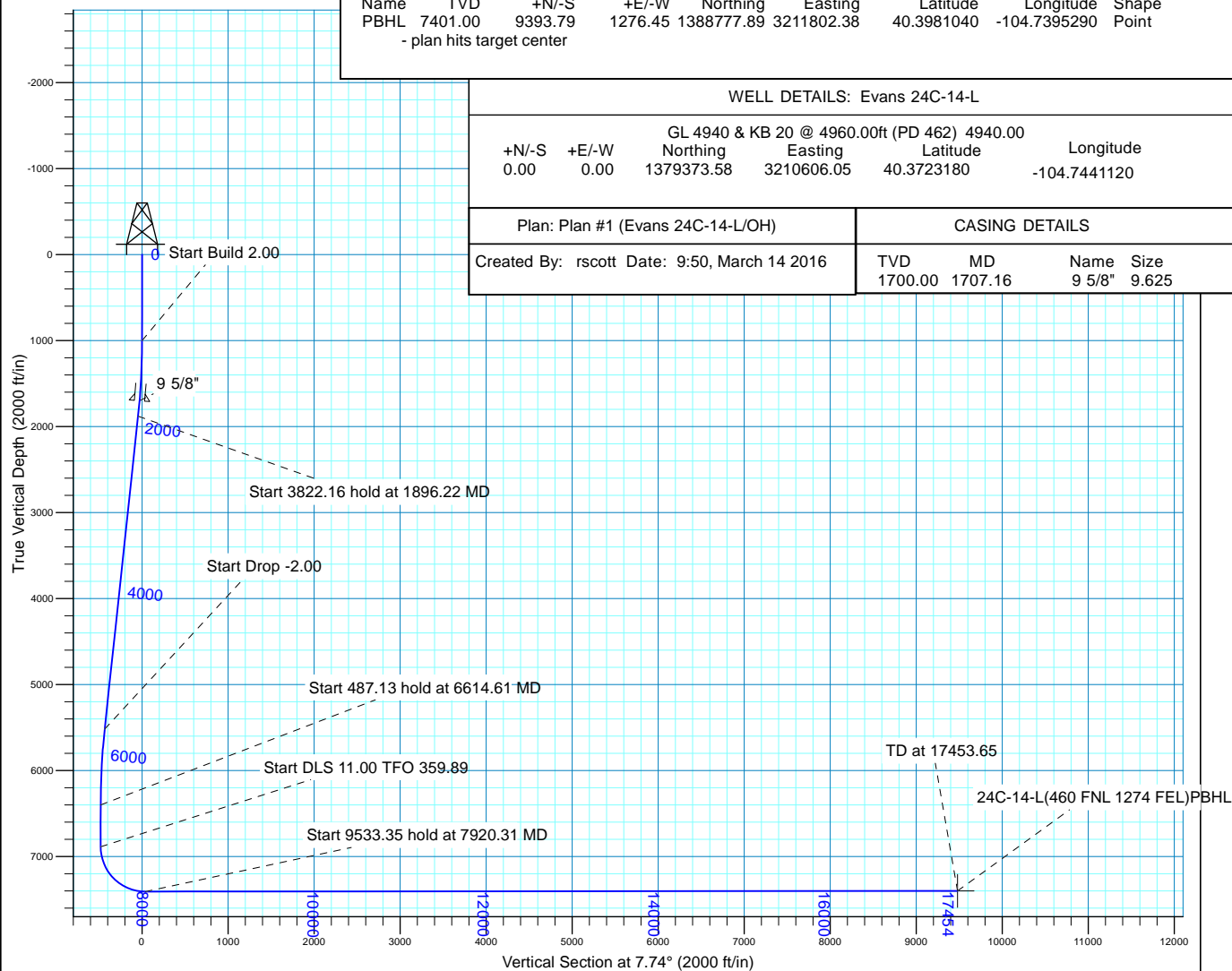
GL 4940 & KB 20 @ 4960.00ft (PD 462) 4940.00							
+N/-S	+E/-W	Northing	Easting	Latitude	Longitude		
0.00	0.00	1379373.58	3210606.05	40.3723180	-104.7441120		

Plan: Plan #1 (Evans 24C-14-L/OH)

CASING DETAILS

Created By: rscott Date: 9:50, March 14 2016

TVD	MD	Name	Size
1700.00	1707.16	9 5/8"	9.625





Synergy Resources Corp.

Weld County, CO NAD 83

Evans 7-26 Pad

Evans 24C-14-L

OH

Plan: Plan #1

Standard Planning Report

14 March, 2016



Database:	Casper District	Local Co-ordinate Reference:	Well Evans 24C-14-L
Company:	Synergy Resources Corp.	TVD Reference:	GL 4940 & KB 20 @ 4960.00ft (PD 462)
Project:	Weld County, CO NAD 83	MD Reference:	GL 4940 & KB 20 @ 4960.00ft (PD 462)
Site:	Evans 7-26 Pad	North Reference:	True
Well:	Evans 24C-14-L	Survey Calculation Method:	Minimum Curvature
Wellbore:	OH		
Design:	Plan #1		

Project	Weld County, CO NAD 83		
Map System:	US State Plane 1983	System Datum:	Mean Sea Level
Geo Datum:	North American Datum 1983		
Map Zone:	Colorado Northern Zone		

Site	Evans 7-26 Pad, SECTION 26 T5N R66W			
Site Position:		Northing:	1,379,289.48 usft	Latitude: 40.3720970
From:	Lat/Long	Easting:	3,210,182.68 usft	Longitude: -104.7456340
Position Uncertainty:	3.28 ft	Slot Radius:	13.200 in	Grid Convergence: 0.49 °

Well	Evans 24C-14-L, 1985 FNL 2574 FEL			
Well Position	+N/-S	80.50 ft	Northing:	1,379,373.58 usft
	+E/-W	424.07 ft	Easting:	3,210,606.05 usft
Position Uncertainty		3.28 ft	Wellhead Elevation:	0.00 ft
			Ground Level:	4,940.00 ft

Wellbore	OH				
Magnetics	Model Name	Sample Date	Declination (°)	Dip Angle (°)	Field Strength (nT)
	BGGM2015	3/9/2016	8.48	66.93	52,530

Design	Plan #1			
Audit Notes:				
Version:	Phase:	PLAN	Tie On Depth:	0.00
Vertical Section:	Depth From (TVD) (ft)	+N/-S (ft)	+E/-W (ft)	Direction (°)
	0.00	0.00	0.00	7.74

Plan Sections										
Measured Depth (ft)	Inclination (°)	Azimuth (°)	Vertical Depth (ft)	+N/-S (ft)	+E/-W (ft)	Dogleg Rate (°/100ft)	Build Rate (°/100ft)	Turn Rate (°/100ft)	TFO (°)	Target
0.00	0.00	0.00	0.00	0.00	0.00	0.00	0.00	0.00	0.00	
1,000.00	0.00	0.00	1,000.00	0.00	0.00	0.00	0.00	0.00	0.00	
1,896.22	17.92	117.02	1,881.68	-63.17	123.87	2.00	2.00	0.00	117.02	
5,718.39	17.92	117.02	5,518.32	-597.62	1,171.77	0.00	0.00	0.00	0.00	
6,614.61	0.00	0.00	6,400.00	-660.79	1,295.64	2.00	-2.00	0.00	180.00	
7,101.74	0.00	0.00	6,887.13	-660.79	1,295.64	0.00	0.00	0.00	0.00	
7,920.31	90.04	359.89	7,408.00	-139.54	1,294.65	11.00	11.00	-0.01	359.89	
17,453.65	90.04	359.89	7,401.00	9,393.79	1,276.45	0.00	0.00	0.00	0.00	24C-14-L(460 FNL 12

Database:	Casper District	Local Co-ordinate Reference:	Well Evans 24C-14-L
Company:	Synergy Resources Corp.	TVD Reference:	GL 4940 & KB 20 @ 4960.00ft (PD 462)
Project:	Weld County, CO NAD 83	MD Reference:	GL 4940 & KB 20 @ 4960.00ft (PD 462)
Site:	Evans 7-26 Pad	North Reference:	True
Well:	Evans 24C-14-L	Survey Calculation Method:	Minimum Curvature
Wellbore:	OH		
Design:	Plan #1		

Planned Survey									
Measured Depth (ft)	Inclination (°)	Azimuth (°)	Vertical Depth (ft)	+N/-S (ft)	+E/-W (ft)	Vertical Section (ft)	Dogleg Rate (°/100ft)	Build Rate (°/100ft)	Turn Rate (°/100ft)
0.00	0.00	0.00	0.00	0.00	0.00	0.00	0.00	0.00	0.00
100.00	0.00	0.00	100.00	0.00	0.00	0.00	0.00	0.00	0.00
200.00	0.00	0.00	200.00	0.00	0.00	0.00	0.00	0.00	0.00
300.00	0.00	0.00	300.00	0.00	0.00	0.00	0.00	0.00	0.00
400.00	0.00	0.00	400.00	0.00	0.00	0.00	0.00	0.00	0.00
500.00	0.00	0.00	500.00	0.00	0.00	0.00	0.00	0.00	0.00
600.00	0.00	0.00	600.00	0.00	0.00	0.00	0.00	0.00	0.00
700.00	0.00	0.00	700.00	0.00	0.00	0.00	0.00	0.00	0.00
800.00	0.00	0.00	800.00	0.00	0.00	0.00	0.00	0.00	0.00
900.00	0.00	0.00	900.00	0.00	0.00	0.00	0.00	0.00	0.00
1,000.00	0.00	0.00	1,000.00	0.00	0.00	0.00	0.00	0.00	0.00
Start Build 2.00									
1,100.00	2.00	117.02	1,099.98	-0.79	1.55	-0.58	2.00	2.00	0.00
1,200.00	4.00	117.02	1,199.84	-3.17	6.22	-2.30	2.00	2.00	0.00
1,300.00	6.00	117.02	1,299.45	-7.13	13.98	-5.18	2.00	2.00	0.00
1,400.00	8.00	117.02	1,398.70	-12.67	24.84	-9.21	2.00	2.00	0.00
1,500.00	10.00	117.02	1,497.47	-19.77	38.77	-14.37	2.00	2.00	0.00
1,600.00	12.00	117.02	1,595.62	-28.44	55.77	-20.67	2.00	2.00	0.00
1,700.00	14.00	117.02	1,693.06	-38.66	75.81	-28.10	2.00	2.00	0.00
1,707.16	14.14	117.02	1,700.00	-39.45	77.36	-28.68	2.00	2.00	0.00
9 5/8"									
1,800.00	16.00	117.02	1,789.64	-50.42	98.86	-36.65	2.00	2.00	0.00
1,896.22	17.92	117.02	1,881.68	-63.17	123.87	-45.92	2.00	2.00	0.00
Start 3822.16 hold at 1896.22 MD									
1,900.00	17.92	117.02	1,885.27	-63.70	124.90	-46.30	0.00	0.00	0.00
2,000.00	17.92	117.02	1,980.42	-77.68	152.32	-56.47	0.00	0.00	0.00
2,100.00	17.92	117.02	2,075.56	-91.67	179.74	-66.63	0.00	0.00	0.00
2,200.00	17.92	117.02	2,170.71	-105.65	207.15	-76.80	0.00	0.00	0.00
2,300.00	17.92	117.02	2,265.85	-119.63	234.57	-86.96	0.00	0.00	0.00
2,400.00	17.92	117.02	2,361.00	-133.62	261.99	-97.12	0.00	0.00	0.00
2,500.00	17.92	117.02	2,456.15	-147.60	289.40	-107.29	0.00	0.00	0.00
2,600.00	17.92	117.02	2,551.29	-161.58	316.82	-117.45	0.00	0.00	0.00
2,700.00	17.92	117.02	2,646.44	-175.56	344.24	-127.62	0.00	0.00	0.00
2,800.00	17.92	117.02	2,741.59	-189.55	371.65	-137.78	0.00	0.00	0.00
2,900.00	17.92	117.02	2,836.73	-203.53	399.07	-147.94	0.00	0.00	0.00
3,000.00	17.92	117.02	2,931.88	-217.51	426.49	-158.11	0.00	0.00	0.00
3,100.00	17.92	117.02	3,027.03	-231.49	453.90	-168.27	0.00	0.00	0.00
3,200.00	17.92	117.02	3,122.17	-245.48	481.32	-178.43	0.00	0.00	0.00
3,300.00	17.92	117.02	3,217.32	-259.46	508.73	-188.60	0.00	0.00	0.00
3,400.00	17.92	117.02	3,312.46	-273.44	536.15	-198.76	0.00	0.00	0.00
3,500.00	17.92	117.02	3,407.61	-287.43	563.57	-208.93	0.00	0.00	0.00
3,600.00	17.92	117.02	3,502.76	-301.41	590.98	-219.09	0.00	0.00	0.00
3,700.00	17.92	117.02	3,597.90	-315.39	618.40	-229.25	0.00	0.00	0.00
3,800.00	17.92	117.02	3,693.05	-329.37	645.82	-239.42	0.00	0.00	0.00
3,900.00	17.92	117.02	3,788.20	-343.36	673.23	-249.58	0.00	0.00	0.00
4,000.00	17.92	117.02	3,883.34	-357.34	700.65	-259.75	0.00	0.00	0.00
4,100.00	17.92	117.02	3,978.49	-371.32	728.07	-269.91	0.00	0.00	0.00
4,200.00	17.92	117.02	4,073.63	-385.30	755.48	-280.07	0.00	0.00	0.00
4,300.00	17.92	117.02	4,168.78	-399.29	782.90	-290.24	0.00	0.00	0.00
4,400.00	17.92	117.02	4,263.93	-413.27	810.32	-300.40	0.00	0.00	0.00
4,500.00	17.92	117.02	4,359.07	-427.25	837.73	-310.57	0.00	0.00	0.00
4,600.00	17.92	117.02	4,454.22	-441.24	865.15	-320.73	0.00	0.00	0.00
4,700.00	17.92	117.02	4,549.37	-455.22	892.57	-330.89	0.00	0.00	0.00

Database:	Casper District	Local Co-ordinate Reference:	Well Evans 24C-14-L
Company:	Synergy Resources Corp.	TVD Reference:	GL 4940 & KB 20 @ 4960.00ft (PD 462)
Project:	Weld County, CO NAD 83	MD Reference:	GL 4940 & KB 20 @ 4960.00ft (PD 462)
Site:	Evans 7-26 Pad	North Reference:	True
Well:	Evans 24C-14-L	Survey Calculation Method:	Minimum Curvature
Wellbore:	OH		
Design:	Plan #1		

Planned Survey									
Measured Depth (ft)	Inclination (°)	Azimuth (°)	Vertical Depth (ft)	+N/-S (ft)	+E/-W (ft)	Vertical Section (ft)	Dogleg Rate (°/100ft)	Build Rate (°/100ft)	Turn Rate (°/100ft)
4,800.00	17.92	117.02	4,644.51	-469.20	919.98	-341.06	0.00	0.00	0.00
4,900.00	17.92	117.02	4,739.66	-483.18	947.40	-351.22	0.00	0.00	0.00
5,000.00	17.92	117.02	4,834.80	-497.17	974.81	-361.38	0.00	0.00	0.00
5,100.00	17.92	117.02	4,929.95	-511.15	1,002.23	-371.55	0.00	0.00	0.00
5,200.00	17.92	117.02	5,025.10	-525.13	1,029.65	-381.71	0.00	0.00	0.00
5,300.00	17.92	117.02	5,120.24	-539.11	1,057.06	-391.88	0.00	0.00	0.00
5,400.00	17.92	117.02	5,215.39	-553.10	1,084.48	-402.04	0.00	0.00	0.00
5,500.00	17.92	117.02	5,310.54	-567.08	1,111.90	-412.20	0.00	0.00	0.00
5,600.00	17.92	117.02	5,405.68	-581.06	1,139.31	-422.37	0.00	0.00	0.00
5,700.00	17.92	117.02	5,500.83	-595.04	1,166.73	-432.53	0.00	0.00	0.00
5,718.39	17.92	117.02	5,518.32	-597.62	1,171.77	-434.40	0.00	0.00	0.00
Start Drop -2.00									
5,800.00	16.29	117.02	5,596.32	-608.52	1,193.16	-442.33	2.00	-2.00	0.00
5,900.00	14.29	117.02	5,692.78	-620.51	1,216.65	-451.04	2.00	-2.00	0.00
6,000.00	12.29	117.02	5,790.09	-630.95	1,237.13	-458.63	2.00	-2.00	0.00
6,100.00	10.29	117.02	5,888.15	-639.85	1,254.58	-465.10	2.00	-2.00	0.00
6,200.00	8.29	117.02	5,986.84	-647.18	1,268.96	-470.43	2.00	-2.00	0.00
6,300.00	6.29	117.02	6,086.02	-652.95	1,280.27	-474.62	2.00	-2.00	0.00
6,400.00	4.29	117.02	6,185.59	-657.14	1,288.48	-477.67	2.00	-2.00	0.00
6,500.00	2.29	117.02	6,285.42	-659.75	1,293.60	-479.56	2.00	-2.00	0.00
6,600.00	0.29	117.02	6,385.39	-660.77	1,295.61	-480.31	2.00	-2.00	0.00
6,614.61	0.00	0.00	6,400.00	-660.79	1,295.64	-480.32	2.00	-2.00	0.00
Start 487.13 hold at 6614.61 MD									
6,700.00	0.00	0.00	6,485.39	-660.79	1,295.64	-480.32	0.00	0.00	0.00
6,800.00	0.00	0.00	6,585.39	-660.79	1,295.64	-480.32	0.00	0.00	0.00
6,900.00	0.00	0.00	6,685.39	-660.79	1,295.64	-480.32	0.00	0.00	0.00
7,000.00	0.00	0.00	6,785.39	-660.79	1,295.64	-480.32	0.00	0.00	0.00
7,100.00	0.00	0.00	6,885.39	-660.79	1,295.64	-480.32	0.00	0.00	0.00
7,101.74	0.00	0.00	6,887.13	-660.79	1,295.64	-480.32	0.00	0.00	0.00
Start DLS 11.00 TFO 359.89									
7,200.00	10.81	359.89	6,984.81	-651.55	1,295.62	-471.17	11.00	11.00	0.00
7,300.00	21.81	359.89	7,080.64	-623.51	1,295.57	-443.39	11.00	11.00	0.00
7,400.00	32.81	359.89	7,169.36	-577.70	1,295.48	-398.01	11.00	11.00	0.00
7,500.00	43.81	359.89	7,247.70	-515.81	1,295.36	-336.70	11.00	11.00	0.00
7,600.00	54.81	359.89	7,312.80	-440.10	1,295.22	-261.70	11.00	11.00	0.00
7,700.00	65.81	359.89	7,362.26	-353.37	1,295.05	-175.78	11.00	11.00	0.00
7,800.00	76.81	359.89	7,394.26	-258.79	1,294.87	-82.08	11.00	11.00	0.00
7,900.00	87.81	359.89	7,407.62	-159.84	1,294.68	15.94	11.00	11.00	0.00
7,920.31	90.04	359.89	7,408.00	-139.54	1,294.65	36.05	11.00	11.00	0.00
Start 9533.35 hold at 7920.31 MD									
8,000.00	90.04	359.89	7,407.94	-59.84	1,294.49	115.00	0.00	0.00	0.00
8,100.00	90.04	359.89	7,407.87	40.16	1,294.30	214.06	0.00	0.00	0.00
8,200.00	90.04	359.89	7,407.80	140.16	1,294.11	313.13	0.00	0.00	0.00
8,300.00	90.04	359.89	7,407.72	240.16	1,293.92	412.19	0.00	0.00	0.00
8,400.00	90.04	359.89	7,407.65	340.16	1,293.73	511.25	0.00	0.00	0.00
8,500.00	90.04	359.89	7,407.58	440.16	1,293.54	610.32	0.00	0.00	0.00
8,600.00	90.04	359.89	7,407.50	540.16	1,293.35	709.38	0.00	0.00	0.00
8,700.00	90.04	359.89	7,407.43	640.16	1,293.16	808.44	0.00	0.00	0.00
8,800.00	90.04	359.89	7,407.35	740.16	1,292.97	907.51	0.00	0.00	0.00
8,900.00	90.04	359.89	7,407.28	840.16	1,292.78	1,006.57	0.00	0.00	0.00
9,000.00	90.04	359.89	7,407.21	940.15	1,292.58	1,105.63	0.00	0.00	0.00
9,100.00	90.04	359.89	7,407.13	1,040.15	1,292.39	1,204.70	0.00	0.00	0.00
9,200.00	90.04	359.89	7,407.06	1,140.15	1,292.20	1,303.76	0.00	0.00	0.00
9,300.00	90.04	359.89	7,406.99	1,240.15	1,292.01	1,402.82	0.00	0.00	0.00

Database:	Casper District	Local Co-ordinate Reference:	Well Evans 24C-14-L
Company:	Synergy Resources Corp.	TVD Reference:	GL 4940 & KB 20 @ 4960.00ft (PD 462)
Project:	Weld County, CO NAD 83	MD Reference:	GL 4940 & KB 20 @ 4960.00ft (PD 462)
Site:	Evans 7-26 Pad	North Reference:	True
Well:	Evans 24C-14-L	Survey Calculation Method:	Minimum Curvature
Wellbore:	OH		
Design:	Plan #1		

Planned Survey									
Measured Depth (ft)	Inclination (°)	Azimuth (°)	Vertical Depth (ft)	+N/-S (ft)	+E/-W (ft)	Vertical Section (ft)	Dogleg Rate (°/100ft)	Build Rate (°/100ft)	Turn Rate (°/100ft)
9,400.00	90.04	359.89	7,406.91	1,340.15	1,291.82	1,501.89	0.00	0.00	0.00
9,500.00	90.04	359.89	7,406.84	1,440.15	1,291.63	1,600.95	0.00	0.00	0.00
9,600.00	90.04	359.89	7,406.77	1,540.15	1,291.44	1,700.01	0.00	0.00	0.00
9,700.00	90.04	359.89	7,406.69	1,640.15	1,291.25	1,799.08	0.00	0.00	0.00
9,800.00	90.04	359.89	7,406.62	1,740.15	1,291.06	1,898.14	0.00	0.00	0.00
9,900.00	90.04	359.89	7,406.55	1,840.15	1,290.87	1,997.21	0.00	0.00	0.00
10,000.00	90.04	359.89	7,406.47	1,940.15	1,290.68	2,096.27	0.00	0.00	0.00
10,100.00	90.04	359.89	7,406.40	2,040.15	1,290.49	2,195.33	0.00	0.00	0.00
10,200.00	90.04	359.89	7,406.33	2,140.15	1,290.29	2,294.40	0.00	0.00	0.00
10,300.00	90.04	359.89	7,406.25	2,240.15	1,290.10	2,393.46	0.00	0.00	0.00
10,400.00	90.04	359.89	7,406.18	2,340.15	1,289.91	2,492.52	0.00	0.00	0.00
10,500.00	90.04	359.89	7,406.11	2,440.15	1,289.72	2,591.59	0.00	0.00	0.00
10,600.00	90.04	359.89	7,406.03	2,540.15	1,289.53	2,690.65	0.00	0.00	0.00
10,700.00	90.04	359.89	7,405.96	2,640.15	1,289.34	2,789.71	0.00	0.00	0.00
10,800.00	90.04	359.89	7,405.89	2,740.15	1,289.15	2,888.78	0.00	0.00	0.00
10,900.00	90.04	359.89	7,405.81	2,840.15	1,288.96	2,987.84	0.00	0.00	0.00
11,000.00	90.04	359.89	7,405.74	2,940.15	1,288.77	3,086.90	0.00	0.00	0.00
11,100.00	90.04	359.89	7,405.67	3,040.15	1,288.58	3,185.97	0.00	0.00	0.00
11,200.00	90.04	359.89	7,405.59	3,140.15	1,288.39	3,285.03	0.00	0.00	0.00
11,300.00	90.04	359.89	7,405.52	3,240.15	1,288.20	3,384.09	0.00	0.00	0.00
11,400.00	90.04	359.89	7,405.45	3,340.15	1,288.00	3,483.16	0.00	0.00	0.00
11,500.00	90.04	359.89	7,405.37	3,440.15	1,287.81	3,582.22	0.00	0.00	0.00
11,600.00	90.04	359.89	7,405.30	3,540.15	1,287.62	3,681.28	0.00	0.00	0.00
11,700.00	90.04	359.89	7,405.23	3,640.15	1,287.43	3,780.35	0.00	0.00	0.00
11,800.00	90.04	359.89	7,405.15	3,740.15	1,287.24	3,879.41	0.00	0.00	0.00
11,900.00	90.04	359.89	7,405.08	3,840.15	1,287.05	3,978.47	0.00	0.00	0.00
12,000.00	90.04	359.89	7,405.00	3,940.15	1,286.86	4,077.54	0.00	0.00	0.00
12,100.00	90.04	359.89	7,404.93	4,040.15	1,286.67	4,176.60	0.00	0.00	0.00
12,200.00	90.04	359.89	7,404.86	4,140.15	1,286.48	4,275.67	0.00	0.00	0.00
12,300.00	90.04	359.89	7,404.78	4,240.15	1,286.29	4,374.73	0.00	0.00	0.00
12,400.00	90.04	359.89	7,404.71	4,340.15	1,286.10	4,473.79	0.00	0.00	0.00
12,500.00	90.04	359.89	7,404.64	4,440.15	1,285.91	4,572.86	0.00	0.00	0.00
12,600.00	90.04	359.89	7,404.56	4,540.15	1,285.71	4,671.92	0.00	0.00	0.00
12,700.00	90.04	359.89	7,404.49	4,640.15	1,285.52	4,770.98	0.00	0.00	0.00
12,800.00	90.04	359.89	7,404.42	4,740.15	1,285.33	4,870.05	0.00	0.00	0.00
12,900.00	90.04	359.89	7,404.34	4,840.15	1,285.14	4,969.11	0.00	0.00	0.00
13,000.00	90.04	359.89	7,404.27	4,940.15	1,284.95	5,068.17	0.00	0.00	0.00
13,100.00	90.04	359.89	7,404.20	5,040.15	1,284.76	5,167.24	0.00	0.00	0.00
13,200.00	90.04	359.89	7,404.12	5,140.15	1,284.57	5,266.30	0.00	0.00	0.00
13,300.00	90.04	359.89	7,404.05	5,240.15	1,284.38	5,365.36	0.00	0.00	0.00
13,400.00	90.04	359.89	7,403.98	5,340.15	1,284.19	5,464.43	0.00	0.00	0.00
13,500.00	90.04	359.89	7,403.90	5,440.15	1,284.00	5,563.49	0.00	0.00	0.00
13,600.00	90.04	359.89	7,403.83	5,540.15	1,283.81	5,662.55	0.00	0.00	0.00
13,700.00	90.04	359.89	7,403.76	5,640.15	1,283.61	5,761.62	0.00	0.00	0.00
13,800.00	90.04	359.89	7,403.68	5,740.14	1,283.42	5,860.68	0.00	0.00	0.00
13,900.00	90.04	359.89	7,403.61	5,840.14	1,283.23	5,959.74	0.00	0.00	0.00
14,000.00	90.04	359.89	7,403.54	5,940.14	1,283.04	6,058.81	0.00	0.00	0.00
14,100.00	90.04	359.89	7,403.46	6,040.14	1,282.85	6,157.87	0.00	0.00	0.00
14,200.00	90.04	359.89	7,403.39	6,140.14	1,282.66	6,256.94	0.00	0.00	0.00
14,300.00	90.04	359.89	7,403.32	6,240.14	1,282.47	6,356.00	0.00	0.00	0.00
14,400.00	90.04	359.89	7,403.24	6,340.14	1,282.28	6,455.06	0.00	0.00	0.00
14,500.00	90.04	359.89	7,403.17	6,440.14	1,282.09	6,554.13	0.00	0.00	0.00
14,600.00	90.04	359.89	7,403.10	6,540.14	1,281.90	6,653.19	0.00	0.00	0.00
14,700.00	90.04	359.89	7,403.02	6,640.14	1,281.71	6,752.25	0.00	0.00	0.00

Database:	Casper District	Local Co-ordinate Reference:	Well Evans 24C-14-L
Company:	Synergy Resources Corp.	TVD Reference:	GL 4940 & KB 20 @ 4960.00ft (PD 462)
Project:	Weld County, CO NAD 83	MD Reference:	GL 4940 & KB 20 @ 4960.00ft (PD 462)
Site:	Evans 7-26 Pad	North Reference:	True
Well:	Evans 24C-14-L	Survey Calculation Method:	Minimum Curvature
Wellbore:	OH		
Design:	Plan #1		

Planned Survey									
Measured Depth (ft)	Inclination (°)	Azimuth (°)	Vertical Depth (ft)	+N/-S (ft)	+E/-W (ft)	Vertical Section (ft)	Dogleg Rate (°/100ft)	Build Rate (°/100ft)	Turn Rate (°/100ft)
14,800.00	90.04	359.89	7,402.95	6,740.14	1,281.52	6,851.32	0.00	0.00	0.00
14,900.00	90.04	359.89	7,402.88	6,840.14	1,281.32	6,950.38	0.00	0.00	0.00
15,000.00	90.04	359.89	7,402.80	6,940.14	1,281.13	7,049.44	0.00	0.00	0.00
15,100.00	90.04	359.89	7,402.73	7,040.14	1,280.94	7,148.51	0.00	0.00	0.00
15,200.00	90.04	359.89	7,402.66	7,140.14	1,280.75	7,247.57	0.00	0.00	0.00
15,300.00	90.04	359.89	7,402.58	7,240.14	1,280.56	7,346.63	0.00	0.00	0.00
15,400.00	90.04	359.89	7,402.51	7,340.14	1,280.37	7,445.70	0.00	0.00	0.00
15,500.00	90.04	359.89	7,402.43	7,440.14	1,280.18	7,544.76	0.00	0.00	0.00
15,600.00	90.04	359.89	7,402.36	7,540.14	1,279.99	7,643.82	0.00	0.00	0.00
15,700.00	90.04	359.89	7,402.29	7,640.14	1,279.80	7,742.89	0.00	0.00	0.00
15,800.00	90.04	359.89	7,402.21	7,740.14	1,279.61	7,841.95	0.00	0.00	0.00
15,900.00	90.04	359.89	7,402.14	7,840.14	1,279.42	7,941.01	0.00	0.00	0.00
16,000.00	90.04	359.89	7,402.07	7,940.14	1,279.23	8,040.08	0.00	0.00	0.00
16,100.00	90.04	359.89	7,401.99	8,040.14	1,279.03	8,139.14	0.00	0.00	0.00
16,200.00	90.04	359.89	7,401.92	8,140.14	1,278.84	8,238.20	0.00	0.00	0.00
16,300.00	90.04	359.89	7,401.85	8,240.14	1,278.65	8,337.27	0.00	0.00	0.00
16,400.00	90.04	359.89	7,401.77	8,340.14	1,278.46	8,436.33	0.00	0.00	0.00
16,500.00	90.04	359.89	7,401.70	8,440.14	1,278.27	8,535.40	0.00	0.00	0.00
16,600.00	90.04	359.89	7,401.63	8,540.14	1,278.08	8,634.46	0.00	0.00	0.00
16,700.00	90.04	359.89	7,401.55	8,640.14	1,277.89	8,733.52	0.00	0.00	0.00
16,800.00	90.04	359.89	7,401.48	8,740.14	1,277.70	8,832.59	0.00	0.00	0.00
16,900.00	90.04	359.89	7,401.41	8,840.14	1,277.51	8,931.65	0.00	0.00	0.00
17,000.00	90.04	359.89	7,401.33	8,940.14	1,277.32	9,030.71	0.00	0.00	0.00
17,100.00	90.04	359.89	7,401.26	9,040.14	1,277.13	9,129.78	0.00	0.00	0.00
17,200.00	90.04	359.89	7,401.19	9,140.14	1,276.94	9,228.84	0.00	0.00	0.00
17,300.00	90.04	359.89	7,401.11	9,240.14	1,276.74	9,327.90	0.00	0.00	0.00
17,400.00	90.04	359.89	7,401.04	9,340.14	1,276.55	9,426.97	0.00	0.00	0.00
17,453.65	90.04	359.89	7,401.00	9,393.79	1,276.45	9,480.12	0.00	0.00	0.00
TD at 17453.65 - 24C-14-L(460 FNL 1274 FEL)PBHL									

Design Targets									
Target Name	Dip Angle (°)	Dip Dir. (°)	TVD (ft)	+N/-S (ft)	+E/-W (ft)	Northing (usft)	Easting (usft)	Latitude	Longitude
24C-14-L(460 FNL 1274	0.00	0.00	7,401.00	9,393.79	1,276.45	1,388,777.89	3,211,802.38	40.3981040	-104.7395290
- hit/miss target									
- Shape									
- plan hits target center									
- Point									

Casing Points					
Measured Depth (ft)	Vertical Depth (ft)	Name	Casing Diameter (in)	Hole Diameter (in)	
1,707.16	1,700.00	9 5/8"	9.625	13.500	

Database:	Casper District	Local Co-ordinate Reference:	Well Evans 24C-14-L
Company:	Synergy Resources Corp.	TVD Reference:	GL 4940 & KB 20 @ 4960.00ft (PD 462)
Project:	Weld County, CO NAD 83	MD Reference:	GL 4940 & KB 20 @ 4960.00ft (PD 462)
Site:	Evans 7-26 Pad	North Reference:	True
Well:	Evans 24C-14-L	Survey Calculation Method:	Minimum Curvature
Wellbore:	OH		
Design:	Plan #1		

Plan Annotations				
Measured Depth (ft)	Vertical Depth (ft)	Local Coordinates		Comment
		+N/-S (ft)	+E/-W (ft)	
1,000.00	1,000.00	0.00	0.00	Start Build 2.00
1,896.22	1,881.68	-63.17	123.87	Start 3822.16 hold at 1896.22 MD
5,718.39	5,518.32	-597.62	1,171.77	Start Drop -2.00
6,614.61	6,400.00	-660.79	1,295.64	Start 487.13 hold at 6614.61 MD
7,101.74	6,887.13	-660.79	1,295.64	Start DLS 11.00 TFO 359.89
7,920.31	7,408.00	-139.54	1,294.65	Start 9533.35 hold at 7920.31 MD
17,453.65	7,401.00	9,393.79	1,276.45	TD at 17453.65