

Federal 11-90-15 #1:

- (1A) (existing well location)
39.09424° N 548 FSL
107.43781° W 1527 FWL

Federal 11-90-15 #2:

- (2A) Surface Location
39.09428° N 562 FSL
107.43783° W 1522 FWL
(2B) Bottom Hole Location
39.10308° N 1495 FNL
107.44771° W 1277 FEL

Federal 11-90-15 #3:

- (3A) Surface Location
39.09432° N 575 FSL
107.43785° W 1516 FWL
(3B) Bottom Hole Location
39.10533° N 683 FNL
107.44317° W 14 FWL

Federal 11-90-15 #4:

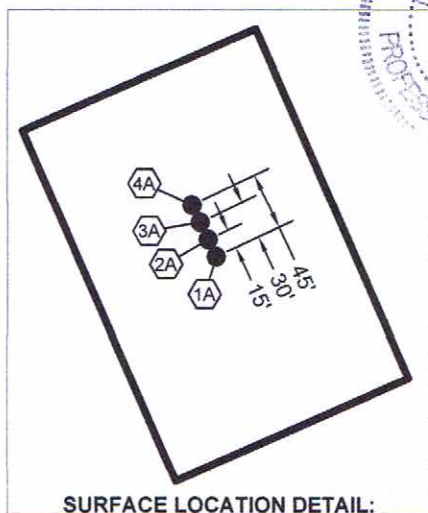
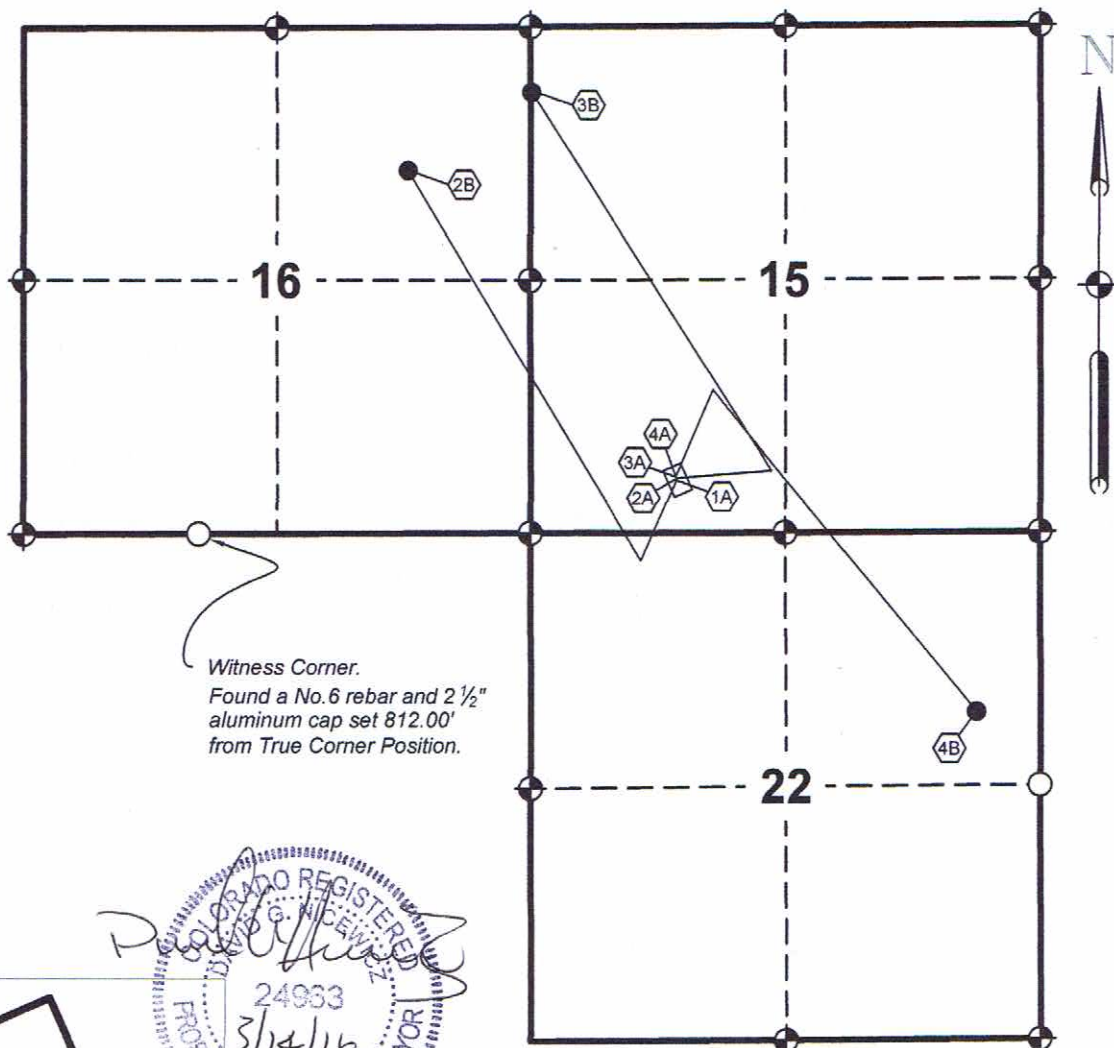
- (4A) Surface Location
39.09435° N 589 FSL
107.43788° W 1509 FWL
(4B) Bottom Hole Location
39.08767° N 1871 FNL
107.42683° W 663 FEL

Note:

- ~ FNL, FSL, FEL and FWL is the footage to the nearest section line measured perpendicularly. (i.e. feet North to Line)
~ Horizontal Datum = NAD83

Witness Corner.

Found a No.6 rebar and 2 1/2" aluminum cap set 812.00' from True Corner Position.



SURFACE LOCATION DETAIL:

Not to Scale

LEGEND

- ◆ ~ FOUND ORIGINAL STONE
- ⊕ ~ FOUND GLO BRASS CAP ON STEEL POST
- ⊕ ~ FOUND REBAR AND CAP BY LS15710
- ~ FOUND No.6 REBAR WITH A 2 1/2" ALUMINUM CAP, LS24963
- ~ WELL FEATURES

MULTIWELL LOCATION PLAT

SG INTEREST I, LTD.
FEDERAL 11-90-15 #1, 2, 3 & 4
Located in the SW 1/4 of Section 15, T. 11 S., R. 90 W.,
Sixth P.M., Gunnison County, Colorado

SURVEYED BY: DGN	DWG DATE: 03/14/2016	AECOM David G. Nicewicz, PLS 804 Colorado Ave, Suite 201 Glenwood Springs Co 81610 cell: (720) 458-1104 email: david.nicewicz@aecom.com
DRAFTED BY: MLD	SCALE: 1" = 2000'	
JOB NO.: 22243490.01000	SHEET NO. 1 of 1	

0' 2000' 4000' 6000'

Scale: 1" = 2000 U.S. Survey feet