



PROJECT DETAILS: Weld County, CO NAD 83

Geodetic System: US State Plane 1983  
Datum: North American Datum 1983  
Ellipsoid: GRS 1980  
Zone: Colorado Northern Zone  
System Datum: Mean Sea Level  
Local North: True

Project: Weld County, CO NAD 83  
Site: Evans 7-26 Pad  
Well: Evans 24N-14A-L  
Wellbore: OH  
Design: Plan #1



Azimuths to True North  
Magnetic North: 8.48°



Magnetic Field  
Strength: 52529.5nT  
Dip Angle: 66.93°  
Date: 3/9/2016  
Model: BGGM2015

#### SECTION DETAILS

MD	Inc	Azi	TVD	+N/-S	+E/-W	Dleg	TFace	VSect
0.00	0.00	0.00	0.00	0.00	0.00	0.00	0.00	0.00
500.00	0.00	0.00	500.00	0.00	0.00	0.00	0.00	0.00
1309.16	16.18	111.10	1298.44	-40.87	105.90	2.00	111.10	-26.27
5477.44	16.18	111.10	5301.56	-459.13	1189.74	0.00	0.00	-295.11
6286.60	0.00	0.00	6100.00	-500.00	1295.64	2.00	180.00	-321.38
6810.73	0.00	0.00	6624.13	-500.00	1295.64	0.00	0.00	-321.38
7630.68	90.20	359.89	7145.00	22.64	1294.63	11.00	359.89	196.39
17021.94	90.20	359.89	7113.00	9413.83	1276.45	0.00	0.00	9499.97

#### DESIGN TARGET DETAILS

Name	TVD	+N/-S	+E/-W	Northing	Easting	Latitude	Longitude	Shape
PBHL	7113.00	9413.83	1276.45	1388777.89	3211802.38	40.3981040	-104.7395290	Point
- plan hits target center								

#### WELL DETAILS: Evans 24N-14A-L

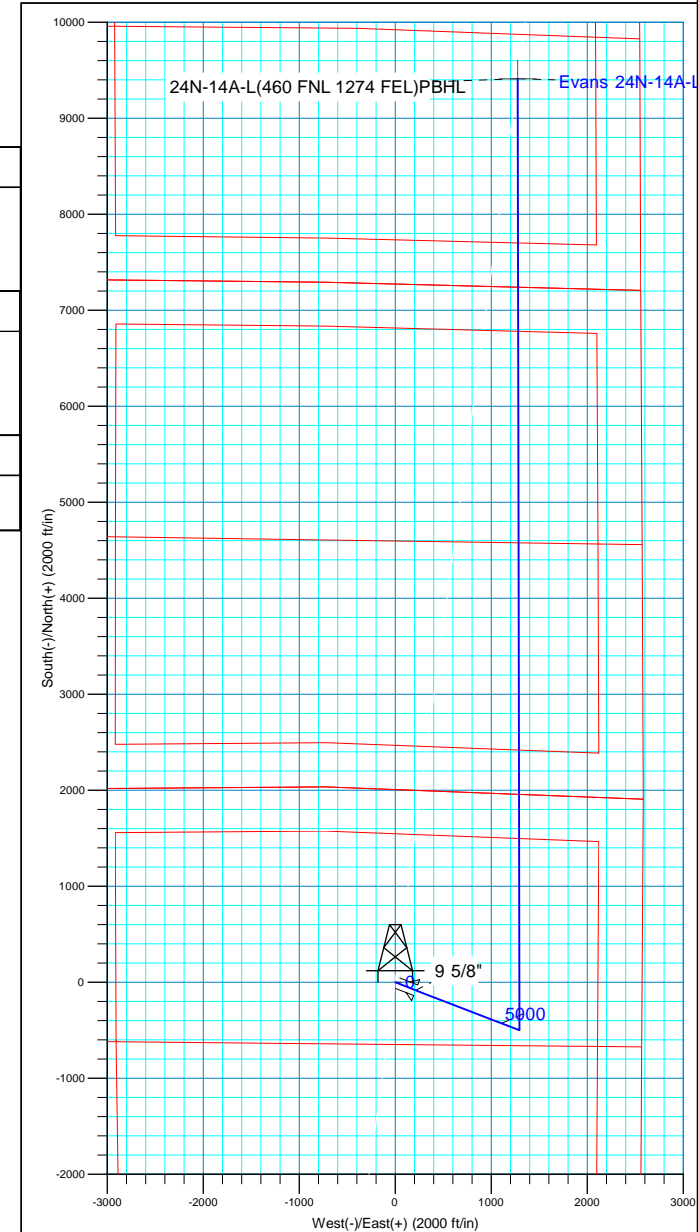
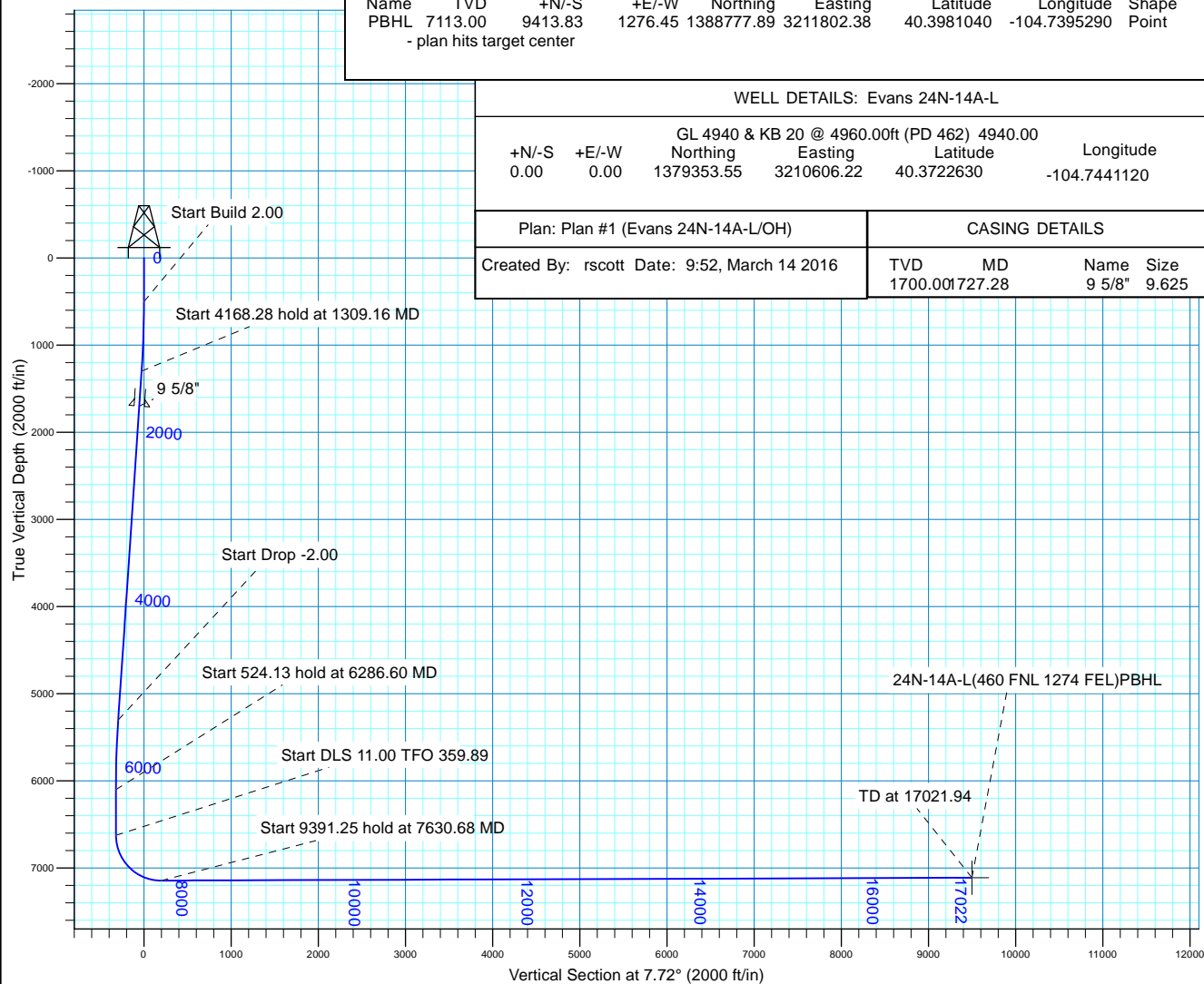
GL 4940 & KB 20 @ 4960.00ft (PD 462) 4940.00							
+N/-S	+E/-W	Northing	Easting	Latitude	Longitude		
0.00	0.00	1379353.55	3210606.22	40.3722630	-104.7441120		

Plan: Plan #1 (Evans 24N-14A-L/OH)

#### CASING DETAILS

Created By: rscott Date: 9:52, March 14 2016

TVD	MD	Name	Size
1700.00	727.28	9 5/8"	9.625





## **Synergy Resources Corp.**

Weld County, CO NAD 83

Evans 7-26 Pad

Evans 24N-14A-L

OH

Plan: Plan #1

## **Standard Planning Report**

13 March, 2016



<b>Database:</b>	Casper District	<b>Local Co-ordinate Reference:</b>	Well Evans 24N-14A-L
<b>Company:</b>	Synergy Resources Corp.	<b>TVD Reference:</b>	GL 4940 & KB 20 @ 4960.00ft (PD 462)
<b>Project:</b>	Weld County, CO NAD 83	<b>MD Reference:</b>	GL 4940 & KB 20 @ 4960.00ft (PD 462)
<b>Site:</b>	Evans 7-26 Pad	<b>North Reference:</b>	True
<b>Well:</b>	Evans 24N-14A-L	<b>Survey Calculation Method:</b>	Minimum Curvature
<b>Wellbore:</b>	OH		
<b>Design:</b>	Plan #1		

<b>Project</b>	Weld County, CO NAD 83		
<b>Map System:</b>	US State Plane 1983	<b>System Datum:</b>	Mean Sea Level
<b>Geo Datum:</b>	North American Datum 1983		
<b>Map Zone:</b>	Colorado Northern Zone		

Site		Evans 7-26 Pad, SECTION 26 T5N R66W			
Site Position:		Northing:	1,379,289.48 usft	Latitude:	40.3720970
From:	Lat/Long	Easting:	3,210,182.68 usft	Longitude:	-104.7456340
Position Uncertainty:	3.28 ft	Slot Radius:	13.200 in	Grid Convergence:	0.49 °

Well	Evans 24N-14A-L, 2005 FNL 2574 FEL					
Well Position	+N/-S	60.47 ft	Northing:	1,379,353.55 usft	Latitude:	40.3722630
	+E/-W	424.07 ft	Easting:	3,210,606.22 usft	Longitude:	-104.7441120
Position Uncertainty		3.28 ft	Wellhead Elevation:	0.00 ft	Ground Level:	4,940.00 ft

<b>Wellbore</b>	OH				
<b>Magnetics</b>	<b>Model Name</b>	<b>Sample Date</b>	<b>Declination (°)</b>	<b>Dip Angle (°)</b>	<b>Field Strength (nT)</b>
	BGGM2015	3/9/2016	8.48	66.93	52,530

<b>Design</b>	Plan #1			
<b>Audit Notes:</b>				
<b>Version:</b>	<b>Phase:</b>	PLAN	<b>Tie On Depth:</b>	0.00
<b>Vertical Section:</b>	<b>Depth From (TVD) (ft)</b>	<b>+N/-S (ft)</b>	<b>+E/-W (ft)</b>	<b>Direction (°)</b>
	0.00	0.00	0.00	7.72

<b>Plan Sections</b>										
Measured Depth (ft)	Inclination (°)	Azimuth (°)	Vertical Depth (ft)	+N/-S (ft)	+E/-W (ft)	Dogleg Rate (°/100ft)	Build Rate (°/100ft)	Turn Rate (°/100ft)	TFO (°)	Target
0.00	0.00	0.00	0.00	0.00	0.00	0.00	0.00	0.00	0.00	
500.00	0.00	0.00	500.00	0.00	0.00	0.00	0.00	0.00	0.00	
1,309.16	16.18	111.10	1,298.44	-40.87	105.90	2.00	2.00	0.00	111.10	
5,477.44	16.18	111.10	5,301.56	-459.13	1,189.74	0.00	0.00	0.00	0.00	
6,286.60	0.00	0.00	6,100.00	-500.00	1,295.64	2.00	-2.00	0.00	180.00	
6,810.73	0.00	0.00	6,624.13	-500.00	1,295.64	0.00	0.00	0.00	0.00	
7,630.68	90.20	359.89	7,145.00	22.64	1,294.63	11.00	11.00	-0.01	359.89	
17,021.94	90.20	359.89	7,113.00	9,413.83	1,276.45	0.00	0.00	0.00	0.00	24N-14A-L(460 FNL 1

<b>Database:</b>	Casper District	<b>Local Co-ordinate Reference:</b>	Well Evans 24N-14A-L
<b>Company:</b>	Synergy Resources Corp.	<b>TVD Reference:</b>	GL 4940 & KB 20 @ 4960.00ft (PD 462)
<b>Project:</b>	Weld County, CO NAD 83	<b>MD Reference:</b>	GL 4940 & KB 20 @ 4960.00ft (PD 462)
<b>Site:</b>	Evans 7-26 Pad	<b>North Reference:</b>	True
<b>Well:</b>	Evans 24N-14A-L	<b>Survey Calculation Method:</b>	Minimum Curvature
<b>Wellbore:</b>	OH		
<b>Design:</b>	Plan #1		

Planned Survey									
Measured Depth (ft)	Inclination (°)	Azimuth (°)	Vertical Depth (ft)	+N/-S (ft)	+E/-W (ft)	Vertical Section (ft)	Dogleg Rate (°/100ft)	Build Rate (°/100ft)	Turn Rate (°/100ft)
0.00	0.00	0.00	0.00	0.00	0.00	0.00	0.00	0.00	0.00
100.00	0.00	0.00	100.00	0.00	0.00	0.00	0.00	0.00	0.00
200.00	0.00	0.00	200.00	0.00	0.00	0.00	0.00	0.00	0.00
300.00	0.00	0.00	300.00	0.00	0.00	0.00	0.00	0.00	0.00
400.00	0.00	0.00	400.00	0.00	0.00	0.00	0.00	0.00	0.00
500.00	0.00	0.00	500.00	0.00	0.00	0.00	0.00	0.00	0.00
Start Build 2.00									
600.00	2.00	111.10	599.98	-0.63	1.63	-0.40	2.00	2.00	0.00
700.00	4.00	111.10	699.84	-2.51	6.51	-1.61	2.00	2.00	0.00
800.00	6.00	111.10	799.45	-5.65	14.64	-3.63	2.00	2.00	0.00
900.00	8.00	111.10	898.70	-10.04	26.01	-6.45	2.00	2.00	0.00
1,000.00	10.00	111.10	997.47	-15.67	40.60	-10.07	2.00	2.00	0.00
1,100.00	12.00	111.10	1,095.62	-22.54	58.40	-14.49	2.00	2.00	0.00
1,200.00	14.00	111.10	1,193.06	-30.64	79.39	-19.69	2.00	2.00	0.00
1,300.00	16.00	111.10	1,289.64	-39.96	103.53	-25.68	2.00	2.00	0.00
1,309.16	16.18	111.10	1,298.44	-40.87	105.90	-26.27	2.00	2.00	0.00
Start 4168.28 hold at 1309.16 MD									
1,400.00	16.18	111.10	1,385.68	-49.98	129.52	-32.13	0.00	0.00	0.00
1,500.00	16.18	111.10	1,481.72	-60.02	155.53	-38.58	0.00	0.00	0.00
1,600.00	16.18	111.10	1,577.76	-70.05	181.53	-45.03	0.00	0.00	0.00
1,700.00	16.18	111.10	1,673.80	-80.09	207.53	-51.48	0.00	0.00	0.00
1,727.28	16.18	111.10	1,700.00	-82.83	214.62	-53.24	0.00	0.00	0.00
9 5/8"									
1,800.00	16.18	111.10	1,769.83	-90.12	233.53	-57.93	0.00	0.00	0.00
1,900.00	16.18	111.10	1,865.87	-100.16	259.53	-64.38	0.00	0.00	0.00
2,000.00	16.18	111.10	1,961.91	-110.19	285.54	-70.83	0.00	0.00	0.00
2,100.00	16.18	111.10	2,057.95	-120.23	311.54	-77.28	0.00	0.00	0.00
2,200.00	16.18	111.10	2,153.98	-130.26	337.54	-83.73	0.00	0.00	0.00
2,300.00	16.18	111.10	2,250.02	-140.29	363.54	-90.18	0.00	0.00	0.00
2,400.00	16.18	111.10	2,346.06	-150.33	389.54	-96.62	0.00	0.00	0.00
2,500.00	16.18	111.10	2,442.10	-160.36	415.55	-103.07	0.00	0.00	0.00
2,600.00	16.18	111.10	2,538.14	-170.40	441.55	-109.52	0.00	0.00	0.00
2,700.00	16.18	111.10	2,634.17	-180.43	467.55	-115.97	0.00	0.00	0.00
2,800.00	16.18	111.10	2,730.21	-190.47	493.55	-122.42	0.00	0.00	0.00
2,900.00	16.18	111.10	2,826.25	-200.50	519.55	-128.87	0.00	0.00	0.00
3,000.00	16.18	111.10	2,922.29	-210.53	545.55	-135.32	0.00	0.00	0.00
3,100.00	16.18	111.10	3,018.32	-220.57	571.56	-141.77	0.00	0.00	0.00
3,200.00	16.18	111.10	3,114.36	-230.60	597.56	-148.22	0.00	0.00	0.00
3,300.00	16.18	111.10	3,210.40	-240.64	623.56	-154.67	0.00	0.00	0.00
3,400.00	16.18	111.10	3,306.44	-250.67	649.56	-161.12	0.00	0.00	0.00
3,500.00	16.18	111.10	3,402.47	-260.71	675.56	-167.57	0.00	0.00	0.00
3,600.00	16.18	111.10	3,498.51	-270.74	701.57	-174.02	0.00	0.00	0.00
3,700.00	16.18	111.10	3,594.55	-280.78	727.57	-180.47	0.00	0.00	0.00
3,800.00	16.18	111.10	3,690.59	-290.81	753.57	-186.92	0.00	0.00	0.00
3,900.00	16.18	111.10	3,786.62	-300.84	779.57	-193.37	0.00	0.00	0.00
4,000.00	16.18	111.10	3,882.66	-310.88	805.57	-199.82	0.00	0.00	0.00
4,100.00	16.18	111.10	3,978.70	-320.91	831.58	-206.27	0.00	0.00	0.00
4,200.00	16.18	111.10	4,074.74	-330.95	857.58	-212.72	0.00	0.00	0.00
4,300.00	16.18	111.10	4,170.77	-340.98	883.58	-219.17	0.00	0.00	0.00
4,400.00	16.18	111.10	4,266.81	-351.02	909.58	-225.62	0.00	0.00	0.00
4,500.00	16.18	111.10	4,362.85	-361.05	935.58	-232.07	0.00	0.00	0.00
4,600.00	16.18	111.10	4,458.89	-371.09	961.59	-238.52	0.00	0.00	0.00
4,700.00	16.18	111.10	4,554.92	-381.12	987.59	-244.97	0.00	0.00	0.00

<b>Database:</b>	Casper District	<b>Local Co-ordinate Reference:</b>	Well Evans 24N-14A-L
<b>Company:</b>	Synergy Resources Corp.	<b>TVD Reference:</b>	GL 4940 & KB 20 @ 4960.00ft (PD 462)
<b>Project:</b>	Weld County, CO NAD 83	<b>MD Reference:</b>	GL 4940 & KB 20 @ 4960.00ft (PD 462)
<b>Site:</b>	Evans 7-26 Pad	<b>North Reference:</b>	True
<b>Well:</b>	Evans 24N-14A-L	<b>Survey Calculation Method:</b>	Minimum Curvature
<b>Wellbore:</b>	OH		
<b>Design:</b>	Plan #1		

Planned Survey									
Measured Depth (ft)	Inclination (°)	Azimuth (°)	Vertical Depth (ft)	+N/-S (ft)	+E/-W (ft)	Vertical Section (ft)	Dogleg Rate (°/100ft)	Build Rate (°/100ft)	Turn Rate (°/100ft)
4,800.00	16.18	111.10	4,650.96	-391.15	1,013.59	-251.42	0.00	0.00	0.00
4,900.00	16.18	111.10	4,747.00	-401.19	1,039.59	-257.87	0.00	0.00	0.00
5,000.00	16.18	111.10	4,843.04	-411.22	1,065.59	-264.32	0.00	0.00	0.00
5,100.00	16.18	111.10	4,939.07	-421.26	1,091.60	-270.77	0.00	0.00	0.00
5,200.00	16.18	111.10	5,035.11	-431.29	1,117.60	-277.22	0.00	0.00	0.00
5,300.00	16.18	111.10	5,131.15	-441.33	1,143.60	-283.67	0.00	0.00	0.00
5,400.00	16.18	111.10	5,227.19	-451.36	1,169.60	-290.12	0.00	0.00	0.00
5,477.44	16.18	111.10	5,301.56	-459.13	1,189.74	-295.11	0.00	0.00	0.00
<b>Start Drop -2.00</b>									
5,500.00	15.73	111.10	5,323.25	-461.36	1,195.52	-296.55	2.00	-2.00	0.00
5,600.00	13.73	111.10	5,419.96	-470.52	1,219.25	-302.43	2.00	-2.00	0.00
5,700.00	11.73	111.10	5,517.49	-478.45	1,239.81	-307.53	2.00	-2.00	0.00
5,800.00	9.73	111.10	5,615.74	-485.16	1,257.18	-311.84	2.00	-2.00	0.00
5,900.00	7.73	111.10	5,714.57	-490.62	1,271.34	-315.35	2.00	-2.00	0.00
6,000.00	5.73	111.10	5,813.88	-494.84	1,282.28	-318.06	2.00	-2.00	0.00
6,100.00	3.73	111.10	5,913.53	-497.81	1,289.97	-319.97	2.00	-2.00	0.00
6,200.00	1.73	111.10	6,013.42	-499.53	1,294.42	-321.08	2.00	-2.00	0.00
6,286.60	0.00	0.00	6,100.00	-500.00	1,295.64	-321.38	2.00	-2.00	0.00
<b>Start 524.13 hold at 6286.60 MD</b>									
6,300.00	0.00	0.00	6,113.40	-500.00	1,295.64	-321.38	0.00	0.00	0.00
6,400.00	0.00	0.00	6,213.40	-500.00	1,295.64	-321.38	0.00	0.00	0.00
6,500.00	0.00	0.00	6,313.40	-500.00	1,295.64	-321.38	0.00	0.00	0.00
6,600.00	0.00	0.00	6,413.40	-500.00	1,295.64	-321.38	0.00	0.00	0.00
6,700.00	0.00	0.00	6,513.40	-500.00	1,295.64	-321.38	0.00	0.00	0.00
6,800.00	0.00	0.00	6,613.40	-500.00	1,295.64	-321.38	0.00	0.00	0.00
6,810.73	0.00	0.00	6,624.13	-500.00	1,295.64	-321.38	0.00	0.00	0.00
<b>Start DLS 11.00 TFO 359.89</b>									
6,900.00	9.82	359.89	6,712.97	-492.37	1,295.63	-313.82	11.00	11.00	0.00
7,000.00	20.82	359.89	6,809.26	-465.99	1,295.57	-287.68	11.00	11.00	0.00
7,100.00	31.82	359.89	6,898.76	-421.72	1,295.49	-243.83	11.00	11.00	0.00
7,200.00	42.82	359.89	6,978.16	-361.18	1,295.37	-183.86	11.00	11.00	0.00
7,300.00	53.82	359.89	7,044.56	-286.61	1,295.23	-109.98	11.00	11.00	0.00
7,400.00	64.82	359.89	7,095.51	-200.74	1,295.06	-24.91	11.00	11.00	0.00
7,500.00	75.82	359.89	7,129.13	-106.73	1,294.88	68.22	11.00	11.00	0.00
7,600.00	86.82	359.89	7,144.20	-8.03	1,294.69	166.01	11.00	11.00	0.00
7,630.68	90.20	359.89	7,145.00	22.64	1,294.63	196.39	11.00	11.00	0.00
<b>Start 9391.25 hold at 7630.68 MD</b>									
7,700.00	90.20	359.89	7,144.76	91.96	1,294.49	265.06	0.00	0.00	0.00
7,800.00	90.20	359.89	7,144.42	191.96	1,294.30	364.12	0.00	0.00	0.00
7,900.00	90.20	359.89	7,144.08	291.96	1,294.11	463.19	0.00	0.00	0.00
8,000.00	90.20	359.89	7,143.74	391.96	1,293.91	562.26	0.00	0.00	0.00
8,100.00	90.20	359.89	7,143.40	491.96	1,293.72	661.32	0.00	0.00	0.00
8,200.00	90.20	359.89	7,143.06	591.96	1,293.53	760.39	0.00	0.00	0.00
8,300.00	90.20	359.89	7,142.72	691.95	1,293.33	859.46	0.00	0.00	0.00
8,400.00	90.20	359.89	7,142.38	791.95	1,293.14	958.52	0.00	0.00	0.00
8,500.00	90.20	359.89	7,142.04	891.95	1,292.95	1,057.59	0.00	0.00	0.00
8,600.00	90.20	359.89	7,141.70	991.95	1,292.75	1,156.66	0.00	0.00	0.00
8,700.00	90.20	359.89	7,141.35	1,091.95	1,292.56	1,255.72	0.00	0.00	0.00
8,800.00	90.20	359.89	7,141.01	1,191.95	1,292.37	1,354.79	0.00	0.00	0.00
8,900.00	90.20	359.89	7,140.67	1,291.95	1,292.17	1,453.86	0.00	0.00	0.00
9,000.00	90.20	359.89	7,140.33	1,391.95	1,291.98	1,552.92	0.00	0.00	0.00
9,100.00	90.20	359.89	7,139.99	1,491.95	1,291.78	1,651.99	0.00	0.00	0.00
9,200.00	90.20	359.89	7,139.65	1,591.95	1,291.59	1,751.06	0.00	0.00	0.00
9,300.00	90.20	359.89	7,139.31	1,691.95	1,291.40	1,850.12	0.00	0.00	0.00

<b>Database:</b>	Casper District	<b>Local Co-ordinate Reference:</b>	Well Evans 24N-14A-L
<b>Company:</b>	Synergy Resources Corp.	<b>TVD Reference:</b>	GL 4940 & KB 20 @ 4960.00ft (PD 462)
<b>Project:</b>	Weld County, CO NAD 83	<b>MD Reference:</b>	GL 4940 & KB 20 @ 4960.00ft (PD 462)
<b>Site:</b>	Evans 7-26 Pad	<b>North Reference:</b>	True
<b>Well:</b>	Evans 24N-14A-L	<b>Survey Calculation Method:</b>	Minimum Curvature
<b>Wellbore:</b>	OH		
<b>Design:</b>	Plan #1		

Planned Survey									
Measured Depth (ft)	Inclination (°)	Azimuth (°)	Vertical Depth (ft)	+N/-S (ft)	+E/-W (ft)	Vertical Section (ft)	Dogleg Rate (°/100ft)	Build Rate (°/100ft)	Turn Rate (°/100ft)
9,400.00	90.20	359.89	7,138.97	1,791.95	1,291.20	1,949.19	0.00	0.00	0.00
9,500.00	90.20	359.89	7,138.63	1,891.95	1,291.01	2,048.25	0.00	0.00	0.00
9,600.00	90.20	359.89	7,138.29	1,991.94	1,290.82	2,147.32	0.00	0.00	0.00
9,700.00	90.20	359.89	7,137.95	2,091.94	1,290.62	2,246.39	0.00	0.00	0.00
9,800.00	90.20	359.89	7,137.61	2,191.94	1,290.43	2,345.45	0.00	0.00	0.00
9,900.00	90.20	359.89	7,137.27	2,291.94	1,290.24	2,444.52	0.00	0.00	0.00
10,000.00	90.20	359.89	7,136.93	2,391.94	1,290.04	2,543.59	0.00	0.00	0.00
10,100.00	90.20	359.89	7,136.58	2,491.94	1,289.85	2,642.65	0.00	0.00	0.00
10,200.00	90.20	359.89	7,136.24	2,591.94	1,289.66	2,741.72	0.00	0.00	0.00
10,300.00	90.20	359.89	7,135.90	2,691.94	1,289.46	2,840.79	0.00	0.00	0.00
10,400.00	90.20	359.89	7,135.56	2,791.94	1,289.27	2,939.85	0.00	0.00	0.00
10,500.00	90.20	359.89	7,135.22	2,891.94	1,289.07	3,038.92	0.00	0.00	0.00
10,600.00	90.20	359.89	7,134.88	2,991.94	1,288.88	3,137.99	0.00	0.00	0.00
10,700.00	90.20	359.89	7,134.54	3,091.94	1,288.69	3,237.05	0.00	0.00	0.00
10,800.00	90.20	359.89	7,134.20	3,191.94	1,288.49	3,336.12	0.00	0.00	0.00
10,900.00	90.20	359.89	7,133.86	3,291.93	1,288.30	3,435.18	0.00	0.00	0.00
11,000.00	90.20	359.89	7,133.52	3,391.93	1,288.11	3,534.25	0.00	0.00	0.00
11,100.00	90.20	359.89	7,133.18	3,491.93	1,287.91	3,633.32	0.00	0.00	0.00
11,200.00	90.20	359.89	7,132.84	3,591.93	1,287.72	3,732.38	0.00	0.00	0.00
11,300.00	90.20	359.89	7,132.50	3,691.93	1,287.53	3,831.45	0.00	0.00	0.00
11,400.00	90.20	359.89	7,132.16	3,791.93	1,287.33	3,930.52	0.00	0.00	0.00
11,500.00	90.20	359.89	7,131.81	3,891.93	1,287.14	4,029.58	0.00	0.00	0.00
11,600.00	90.20	359.89	7,131.47	3,991.93	1,286.95	4,128.65	0.00	0.00	0.00
11,700.00	90.20	359.89	7,131.13	4,091.93	1,286.75	4,227.72	0.00	0.00	0.00
11,800.00	90.20	359.89	7,130.79	4,191.93	1,286.56	4,326.78	0.00	0.00	0.00
11,900.00	90.20	359.89	7,130.45	4,291.93	1,286.36	4,425.85	0.00	0.00	0.00
12,000.00	90.20	359.89	7,130.11	4,391.93	1,286.17	4,524.92	0.00	0.00	0.00
12,100.00	90.20	359.89	7,129.77	4,491.93	1,285.98	4,623.98	0.00	0.00	0.00
12,200.00	90.20	359.89	7,129.43	4,591.92	1,285.78	4,723.05	0.00	0.00	0.00
12,300.00	90.20	359.89	7,129.09	4,691.92	1,285.59	4,822.11	0.00	0.00	0.00
12,400.00	90.20	359.89	7,128.75	4,791.92	1,285.40	4,921.18	0.00	0.00	0.00
12,500.00	90.20	359.89	7,128.41	4,891.92	1,285.20	5,020.25	0.00	0.00	0.00
12,600.00	90.20	359.89	7,128.07	4,991.92	1,285.01	5,119.31	0.00	0.00	0.00
12,700.00	90.20	359.89	7,127.73	5,091.92	1,284.82	5,218.38	0.00	0.00	0.00
12,800.00	90.20	359.89	7,127.39	5,191.92	1,284.62	5,317.45	0.00	0.00	0.00
12,900.00	90.20	359.89	7,127.04	5,291.92	1,284.43	5,416.51	0.00	0.00	0.00
13,000.00	90.20	359.89	7,126.70	5,391.92	1,284.24	5,515.58	0.00	0.00	0.00
13,100.00	90.20	359.89	7,126.36	5,491.92	1,284.04	5,614.65	0.00	0.00	0.00
13,200.00	90.20	359.89	7,126.02	5,591.92	1,283.85	5,713.71	0.00	0.00	0.00
13,300.00	90.20	359.89	7,125.68	5,691.92	1,283.66	5,812.78	0.00	0.00	0.00
13,400.00	90.20	359.89	7,125.34	5,791.92	1,283.46	5,911.85	0.00	0.00	0.00
13,500.00	90.20	359.89	7,125.00	5,891.91	1,283.27	6,010.91	0.00	0.00	0.00
13,600.00	90.20	359.89	7,124.66	5,991.91	1,283.07	6,109.98	0.00	0.00	0.00
13,700.00	90.20	359.89	7,124.32	6,091.91	1,282.88	6,209.04	0.00	0.00	0.00
13,800.00	90.20	359.89	7,123.98	6,191.91	1,282.69	6,308.11	0.00	0.00	0.00
13,900.00	90.20	359.89	7,123.64	6,291.91	1,282.49	6,407.18	0.00	0.00	0.00
14,000.00	90.20	359.89	7,123.30	6,391.91	1,282.30	6,506.24	0.00	0.00	0.00
14,100.00	90.20	359.89	7,122.96	6,491.91	1,282.11	6,605.31	0.00	0.00	0.00
14,200.00	90.20	359.89	7,122.62	6,591.91	1,281.91	6,704.38	0.00	0.00	0.00
14,300.00	90.20	359.89	7,122.27	6,691.91	1,281.72	6,803.44	0.00	0.00	0.00
14,400.00	90.20	359.89	7,121.93	6,791.91	1,281.53	6,902.51	0.00	0.00	0.00
14,500.00	90.20	359.89	7,121.59	6,891.91	1,281.33	7,001.58	0.00	0.00	0.00
14,600.00	90.20	359.89	7,121.25	6,991.91	1,281.14	7,100.64	0.00	0.00	0.00
14,700.00	90.20	359.89	7,120.91	7,091.91	1,280.95	7,199.71	0.00	0.00	0.00

<b>Database:</b>	Casper District	<b>Local Co-ordinate Reference:</b>	Well Evans 24N-14A-L
<b>Company:</b>	Synergy Resources Corp.	<b>TVD Reference:</b>	GL 4940 & KB 20 @ 4960.00ft (PD 462)
<b>Project:</b>	Weld County, CO NAD 83	<b>MD Reference:</b>	GL 4940 & KB 20 @ 4960.00ft (PD 462)
<b>Site:</b>	Evans 7-26 Pad	<b>North Reference:</b>	True
<b>Well:</b>	Evans 24N-14A-L	<b>Survey Calculation Method:</b>	Minimum Curvature
<b>Wellbore:</b>	OH		
<b>Design:</b>	Plan #1		

Planned Survey										
Measured Depth (ft)	Inclination (°)	Azimuth (°)	Vertical Depth (ft)	+N/-S (ft)	+E/-W (ft)	Vertical Section (ft)	Dogleg Rate (°/100ft)	Build Rate (°/100ft)	Turn Rate (°/100ft)	
14,800.00	90.20	359.89	7,120.57	7,191.90	1,280.75	7,298.78	0.00	0.00	0.00	
14,900.00	90.20	359.89	7,120.23	7,291.90	1,280.56	7,397.84	0.00	0.00	0.00	
15,000.00	90.20	359.89	7,119.89	7,391.90	1,280.36	7,496.91	0.00	0.00	0.00	
15,100.00	90.20	359.89	7,119.55	7,491.90	1,280.17	7,595.98	0.00	0.00	0.00	
15,200.00	90.20	359.89	7,119.21	7,591.90	1,279.98	7,695.04	0.00	0.00	0.00	
15,300.00	90.20	359.89	7,118.87	7,691.90	1,279.78	7,794.11	0.00	0.00	0.00	
15,400.00	90.20	359.89	7,118.53	7,791.90	1,279.59	7,893.17	0.00	0.00	0.00	
15,500.00	90.20	359.89	7,118.19	7,891.90	1,279.40	7,992.24	0.00	0.00	0.00	
15,600.00	90.20	359.89	7,117.84	7,991.90	1,279.20	8,091.31	0.00	0.00	0.00	
15,700.00	90.20	359.89	7,117.50	8,091.90	1,279.01	8,190.37	0.00	0.00	0.00	
15,800.00	90.20	359.89	7,117.16	8,191.90	1,278.82	8,289.44	0.00	0.00	0.00	
15,900.00	90.20	359.89	7,116.82	8,291.90	1,278.62	8,388.51	0.00	0.00	0.00	
16,000.00	90.20	359.89	7,116.48	8,391.90	1,278.43	8,487.57	0.00	0.00	0.00	
16,100.00	90.20	359.89	7,116.14	8,491.89	1,278.24	8,586.64	0.00	0.00	0.00	
16,200.00	90.20	359.89	7,115.80	8,591.89	1,278.04	8,685.71	0.00	0.00	0.00	
16,300.00	90.20	359.89	7,115.46	8,691.89	1,277.85	8,784.77	0.00	0.00	0.00	
16,400.00	90.20	359.89	7,115.12	8,791.89	1,277.66	8,883.84	0.00	0.00	0.00	
16,500.00	90.20	359.89	7,114.78	8,891.89	1,277.46	8,982.91	0.00	0.00	0.00	
16,600.00	90.20	359.89	7,114.44	8,991.89	1,277.27	9,081.97	0.00	0.00	0.00	
16,700.00	90.20	359.89	7,114.10	9,091.89	1,277.07	9,181.04	0.00	0.00	0.00	
16,800.00	90.20	359.89	7,113.76	9,191.89	1,276.88	9,280.10	0.00	0.00	0.00	
16,900.00	90.20	359.89	7,113.42	9,291.89	1,276.69	9,379.17	0.00	0.00	0.00	
17,000.00	90.20	359.89	7,113.07	9,391.89	1,276.49	9,478.24	0.00	0.00	0.00	
17,021.94	90.20	359.89	7,113.00	9,413.83	1,276.45	9,499.97	0.00	0.00	0.00	
TD at 17021.94 - 24N-14A-L(460 FNL 1274 FEL)PBHL										

Design Targets									
Target Name	Dip Angle (°)	Dip Dir. (°)	TVD (ft)	+N/-S (ft)	+E/-W (ft)	Northing (usft)	Easting (usft)	Latitude	Longitude
24N-14A-L(460 FNL 127	0.00	0.00	7,113.00	9,413.83	1,276.45	1,388,777.89	3,211,802.38	40.3981040	-104.7395290
- hit/miss target									
- Shape									
- plan hits target center									
- Point									

Casing Points					
Measured Depth (ft)	Vertical Depth (ft)	Name	Casing Diameter (in)	Hole Diameter (in)	
1,727.28	1,700.00	9 5/8"	9.625	13.500	

<b>Database:</b>	Casper District	<b>Local Co-ordinate Reference:</b>	Well Evans 24N-14A-L
<b>Company:</b>	Synergy Resources Corp.	<b>TVD Reference:</b>	GL 4940 & KB 20 @ 4960.00ft (PD 462)
<b>Project:</b>	Weld County, CO NAD 83	<b>MD Reference:</b>	GL 4940 & KB 20 @ 4960.00ft (PD 462)
<b>Site:</b>	Evans 7-26 Pad	<b>North Reference:</b>	True
<b>Well:</b>	Evans 24N-14A-L	<b>Survey Calculation Method:</b>	Minimum Curvature
<b>Wellbore:</b>	OH		
<b>Design:</b>	Plan #1		

Plan Annotations				
Measured Depth (ft)	Vertical Depth (ft)	Local Coordinates		Comment
		+N/-S (ft)	+E/-W (ft)	
500.00	500.00	0.00	0.00	Start Build 2.00
1,309.16	1,298.44	-40.87	105.90	Start 4168.28 hold at 1309.16 MD
5,477.44	5,301.56	-459.13	1,189.74	Start Drop -2.00
6,286.60	6,100.00	-500.00	1,295.64	Start 524.13 hold at 6286.60 MD
6,810.73	6,624.13	-500.00	1,295.64	Start DLS 11.00 TFO 359.89
7,630.68	7,145.00	22.64	1,294.63	Start 9391.25 hold at 7630.68 MD
17,021.94	7,113.00	9,413.83	1,276.45	TD at 17021.94