



Kerr-McGee Oil & Gas Onshore LP

A subsidiary of Anadarko Petroleum Corporation

1099 18th Street
Denver, CO 80202
720-929-6000

March 1, 2016

Matt Lepore
Director, Colorado Oil and Gas Conservation Commission
Department of Natural Resources
The Chancery Building
1120 Lincoln Street, Suite 801
Denver, CO 80203

Re: **30 Day Certification Letter - 318A.e**
HILGERS 33N1-22HZ (Doc No. 400927218)
Township 3 North, Range 68 West
Section 22: NESE
Unit Acreage: 400 acres
Unit Spacing: 3N 68W Sec 22: S2
3N 68W Sec 23: W2SW
Weld County, Colorado

Dear Director Lepore:

Kerr-McGee Oil and Gas Onshore LP ("KMG") hereby certifies that a thirty (30) day notice has been given by certified mail to all mineral owners in the proposed wellbore spacing unit. We have not received any objections to such well location, proposed spacing unit, or additional producing formation. KMG hereby respectfully requests approval of this boundary well.

If you have any questions or issues regarding this permit, please contact our office.

Sincerely,

Kerr-McGee Oil and Gas Onshore LP

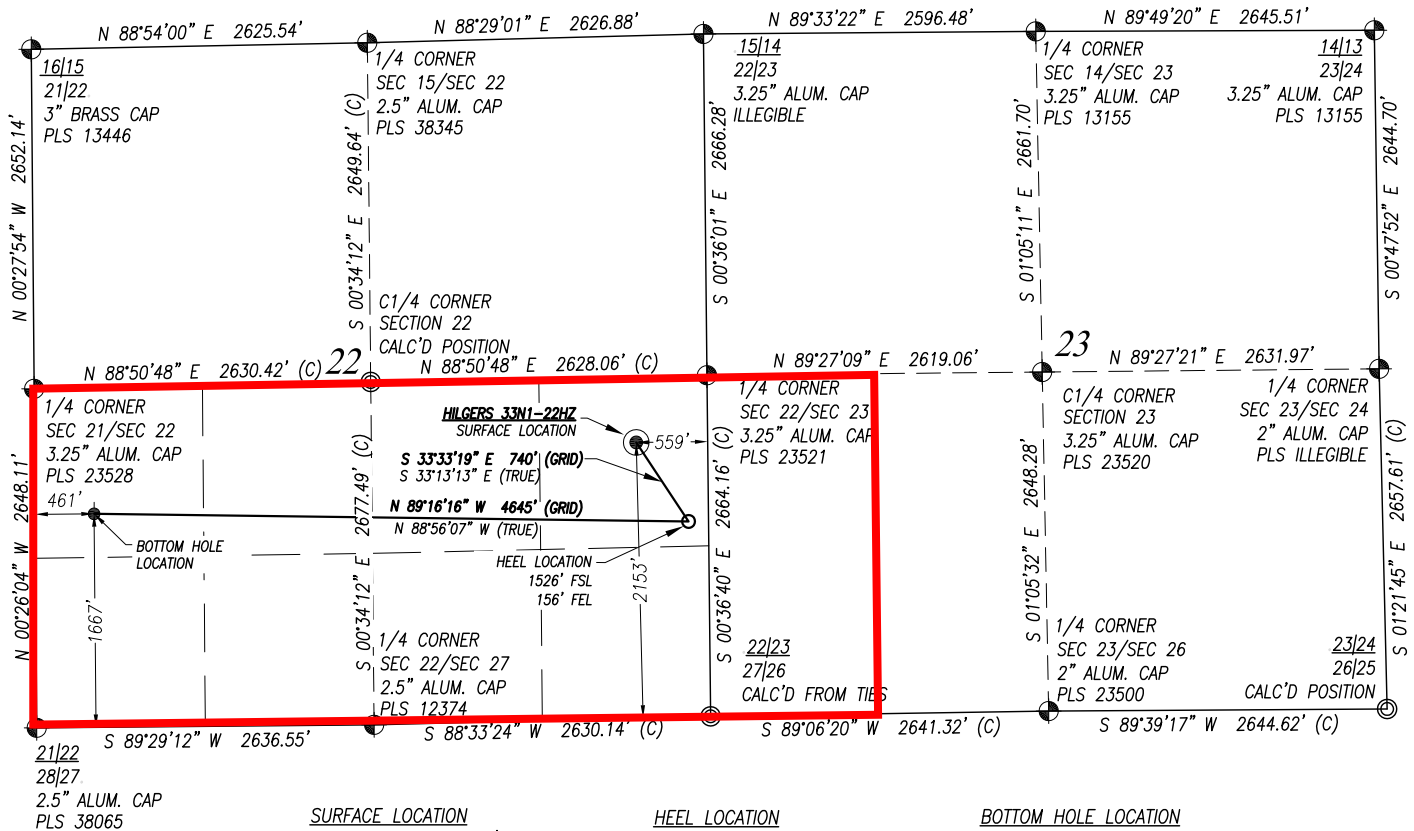
A handwritten signature in blue ink that reads 'RPowers'.

Ronett Powers
Regulatory Analyst II

Enclosure

WELL LOCATION CERTIFICATE: HILGERS 33N1-22HZ

SECTION 22, TOWNSHIP 3 NORTH, RANGE 68 WEST, 6TH P.M.



SURFACE LOCATION

GROUND ELEVATION=4997'
 NAD 83
 LATITUDE= 40.210173
 LONGITUDE= -104.981563
 LATITUDE= 40°12'36.624"
 LONGITUDE= -104°58'53.626"

HEEL LOCATION

NAD 83
 LATITUDE= 40.208473
 LONGITUDE= -104.980111
 LATITUDE= 40°12'30.504"
 LONGITUDE= -104°58'48.398"

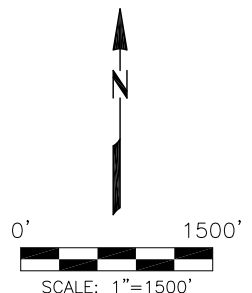
BOTTOM HOLE LOCATION

NAD 83
 LATITUDE= 40.208709
 LONGITUDE= -104.996740
 LATITUDE= 40°12'31.352"
 LONGITUDE= -104°59'48.264"

SURVEYOR'S CERTIFICATION:

I, Mark A. Hall, a licensed professional land surveyor in the state of Colorado do hereby certify to KERR-MCGEE OIL & GAS ONSHORE LP that the survey and well location certificate shown hereon were done by me or under my direct supervision and that the drawing shown hereon accurately depicts the proposed location of the well. this certificate does not represent a land survey plat or improvement survey plat as defined by c.r.s. 38-51-102 and cannot be relied upon to determine ownership.

Mark A. Hall, PLS #36073
 FOR AND ON BEHALF OF ACKLAM, INC.
 195 Telluride Street Suite 7
 Brighton CO 80601



PREPARED FOR:

KerrMcGee
Kerr-McGee Oil & Gas Onshore L.P.
 1099 18th Street
 Denver, Colorado 80202

Acklam, Inc.

DATE SURVEYED: 06/29/2015

DATE DRAFTED: 11/02/2015

DRAFTED BY: SMF CHK BY: JAM

JOB No. 155004 REVISED:

WELL LOCATION CERTIFICATE

HILGERS 33N1-22HZ

SURFACE 2153' FSL 559' FEL
 GROUND ELEVATION=4997'

HEEL 1526' FSL 156' FEL
 BOTTOM HOLE 1667' FSL 461' FWL

NE1/4 SE1/4
 SECTION 22, T3N, R68W, 6TH PM
 WELD COUNTY, COLORADO

NOTES:

- Found Section Corner
- Calculated Section Corner
- Basis of Elevations: NAVD88 (GEOID12).
- Basis of Bearings: Colorado coordinate system 1983 north zone ("GRID").
- Basis of Distances: GRID; Combined Factor=0.999719068.
- GPS Operator: **Jeff Hawkins** PDOP 1.3
- See attachments for existing improvements within 500 feet of the well pad.
- Well footages are measured at right angles to the section lines.
- The Bottom Hole Location bears **S 82°29'52" W 4272'** from the Surface Location.

NOTICE: According to Colorado law you must commence any legal action based upon any defect in this survey within three years after you first discover such defect. In no event may any action based upon any defect in this survey be commenced more than ten years from the date of the certification shown hereon.