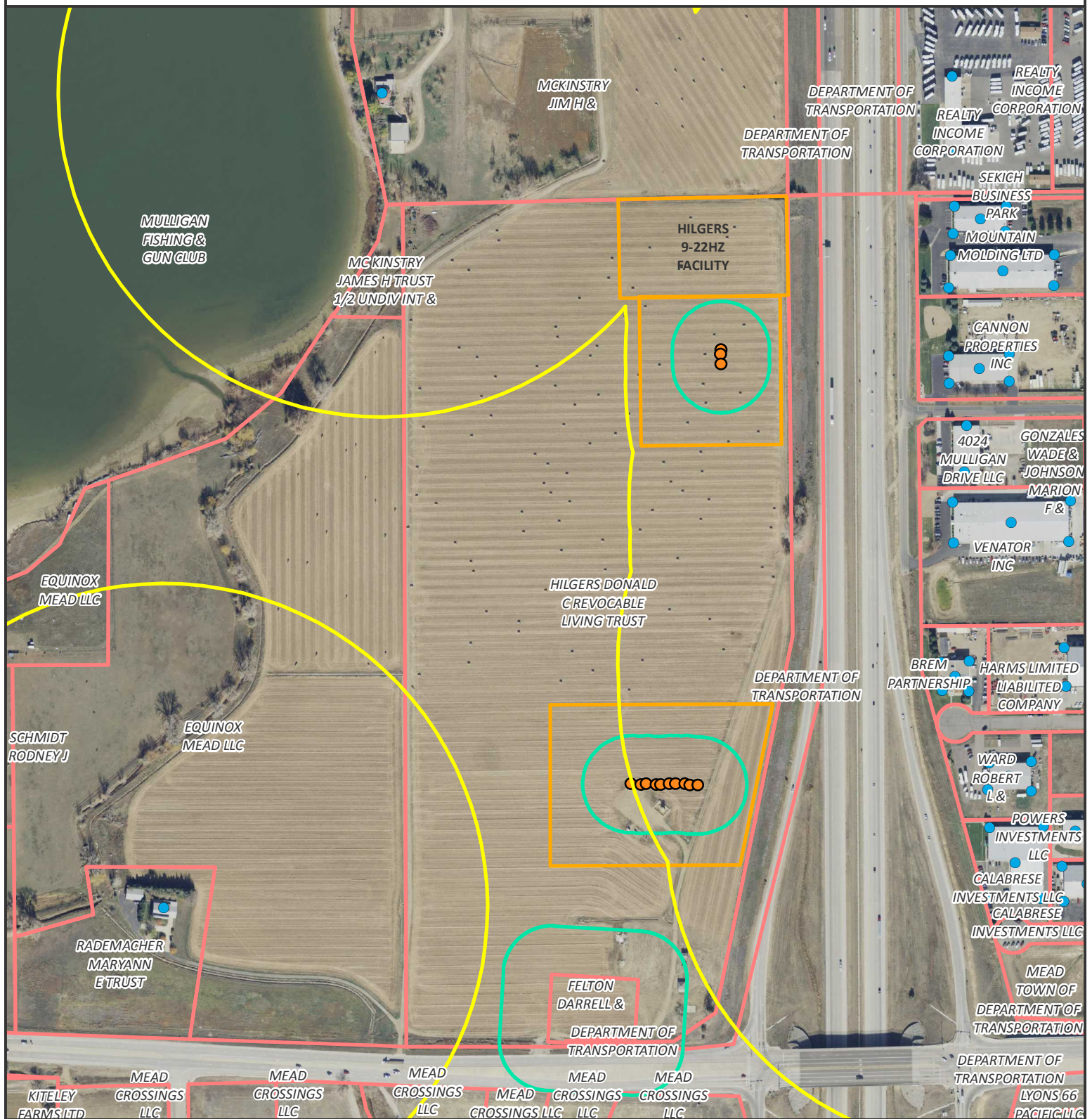


HILGERS 12N-22HZ SITING RATIONALE

SECTION 22, TWN 3N, R 68W, 6TH P.M.



Legend

- 1000' Buffer
- 150' Buffer
- Building Units
- Pad (Proposed)
- Wells
- Weld County Parcels



Date created: 2/4/2016

Created by: APC Regulatory GIS

Scale: 1:5,000

Projection: NAD83 UTM 13N

