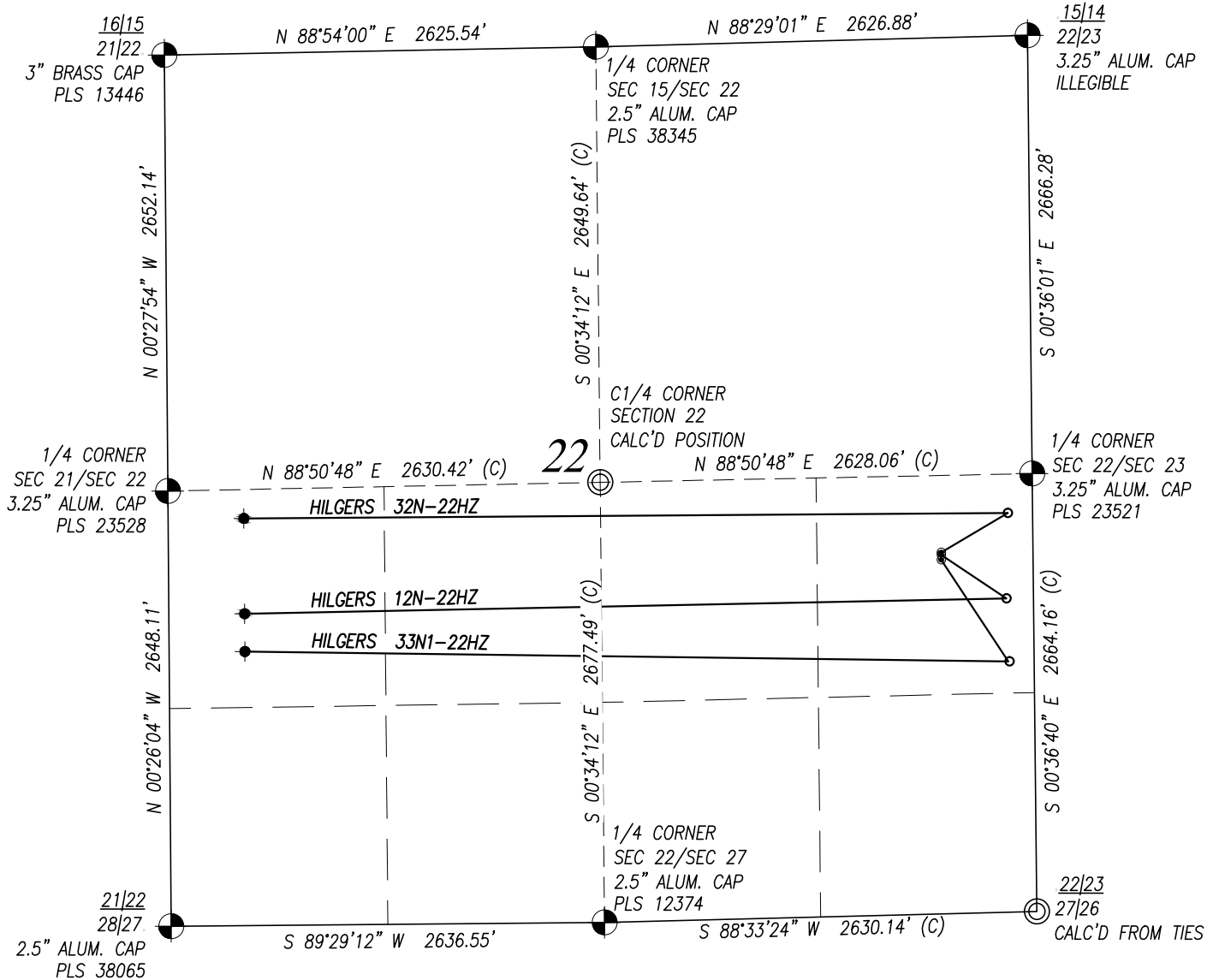


MULTI WELL PLAN: HILGERS 12N-22HZ

SECTION 22, TOWNSHIP 3 NORTH, RANGE 68 WEST, 6TH P.M.



LEGEND

- = FOUND SECTION CORNER
- ⊙ = CALCULATED SECTION CORNER
- = PROPOSED WELL
- ✦ = BOTTOM HOLE
- = HEEL LOCATION

HILGERS 32N-22HZ
 SURFACE: 2198' FSL, 559' FEL
 BOTTOM HOLE: 2477' FSL, 461' FWL

HILGERS 12N-22HZ
 SURFACE: 2183' FSL, 559' FEL
 BOTTOM HOLE: 1897' FSL, 461' FWL

HILGERS 33N1-22HZ
 SURFACE: 2153' FSL, 559' FEL
 BOTTOM HOLE: 1667' FSL, 461' FWL

PREPARED FOR:

KerrMcGee
Kerr-McGee Oil & Gas Onshore L.P.
 1099 18th Street
 Denver, Colorado 80202

Acklam, Inc.

MULTI WELL PLAN - HILGERS 12N-22HZ

DATE SURVEYED: 06/25/2015

DATE DRAFTED: 08/24/2015

DRAFTED BY: SMF CHK BY: JAM

JOB No. 155004 REVISED: 09/16/2015

SURFACE LOCATION
 NE1/4 SE1/4 SECTION 22, T3N, R68W, 6TH P.M.
 WELD COUNTY, COLORADO

NOTICE: According to Colorado law you must commence any legal action based upon any defect in this survey within three years after you first discover such defect. In no event may any action based upon any defect in this survey be commenced more than ten years from the date of the certification shown hereon.

SHEET 1 OF 1