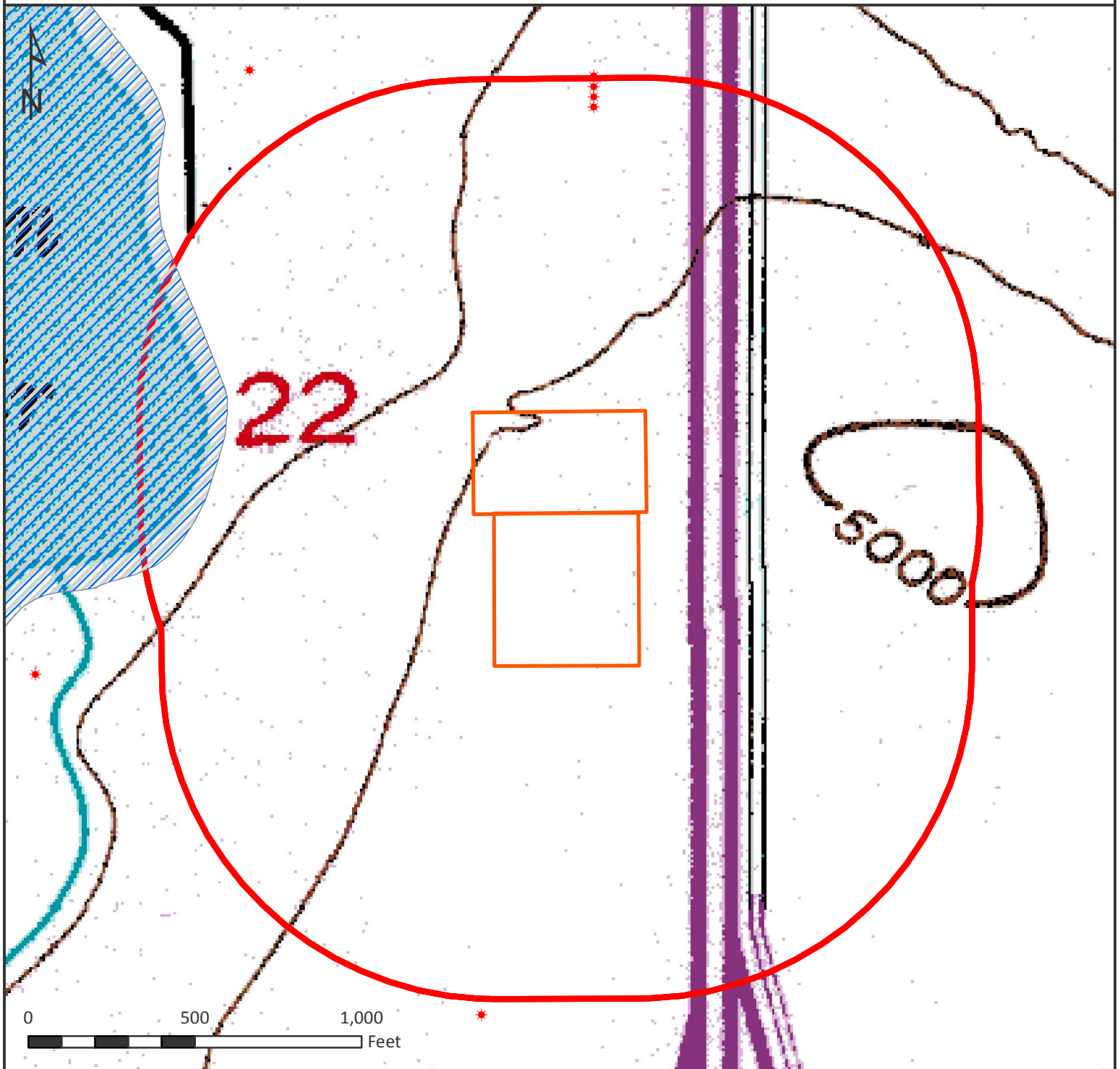


# HYDROLOGY MAP HILGERS 12N-22HZ







## Nearest Surface Water Feature

Mulligan Reservoir: 789' W Elev: 4969'  
Loc Elev: 4997'

All measurements are made from  
edge of disturbed area.

## Legend

-  100-Year Floodplain
-  1000' buffer
-  Well pad (proposed)
-  Existing oil/gas well (COGCC)



Date created: 11/11/2015  
Created by: APC Regulatory GIS  
Scale: 1:5,000  
Projection: NAD83 UTM 13N