

- Access Road
- Site Boundary
- 20 ft Contours
- 5 ft Contours
- Drainage Direction
- Diversion Ditch
- Culverts w Outlet Protection

**Kinder Morgan CO₂
CO, L.P.**

DC-29 CO₂ Well

BMP Map

Page 1 of 4

Dolores County, Colorado

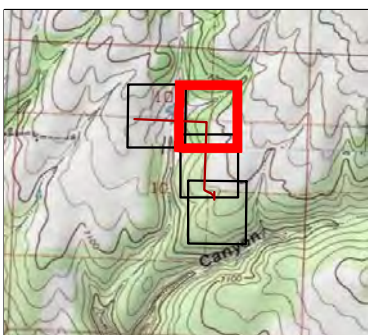
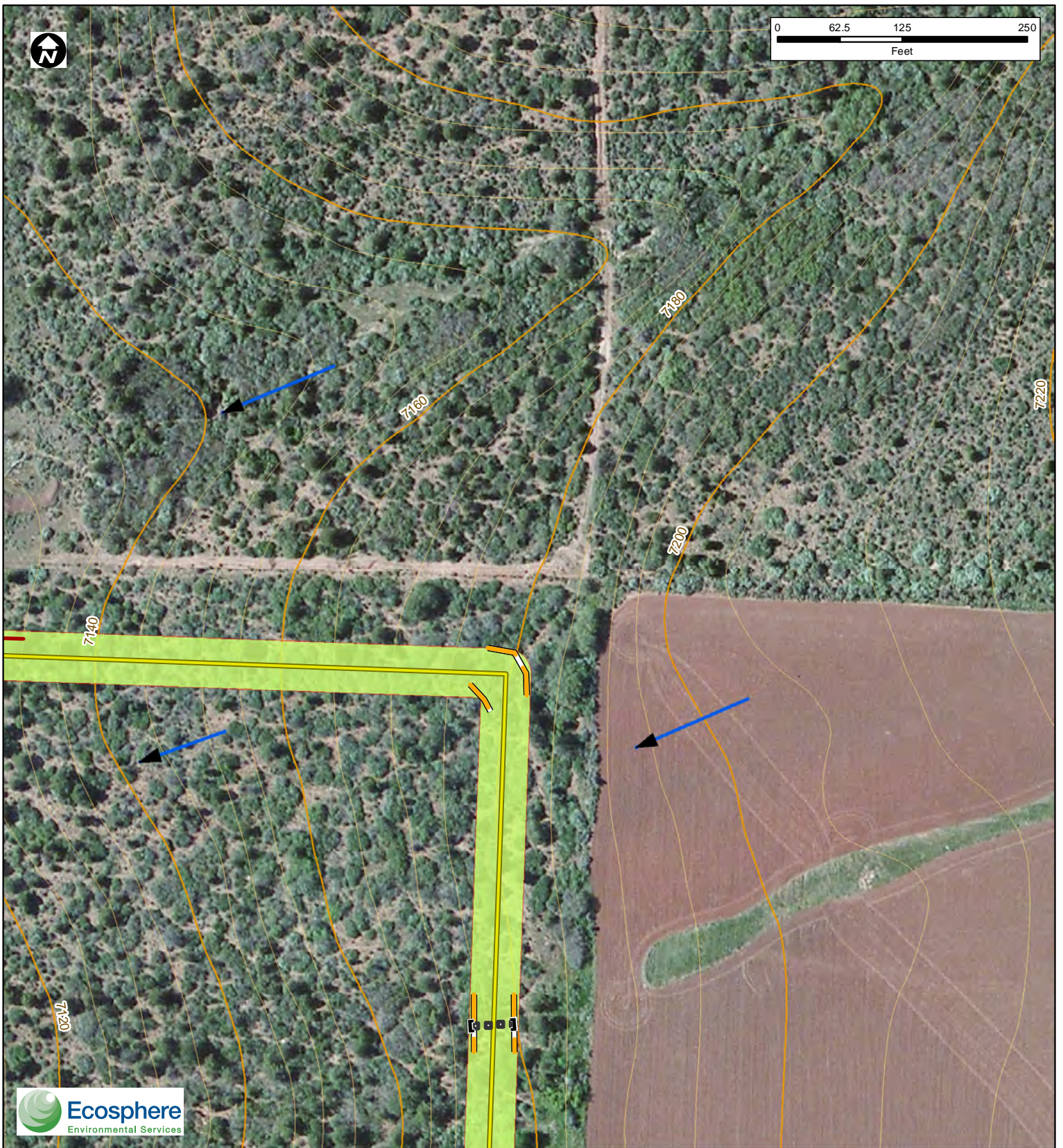
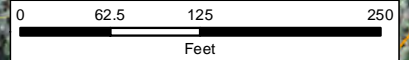
Twn. 40 N Range 18 W Sec 10

1:24k Quadangle: Cahone

1:1,600

Date: 3/10/2016

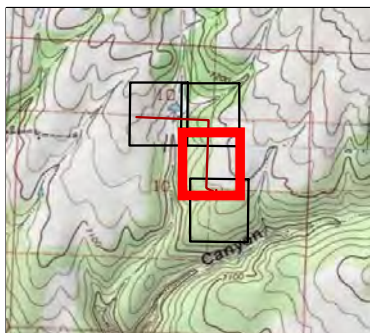
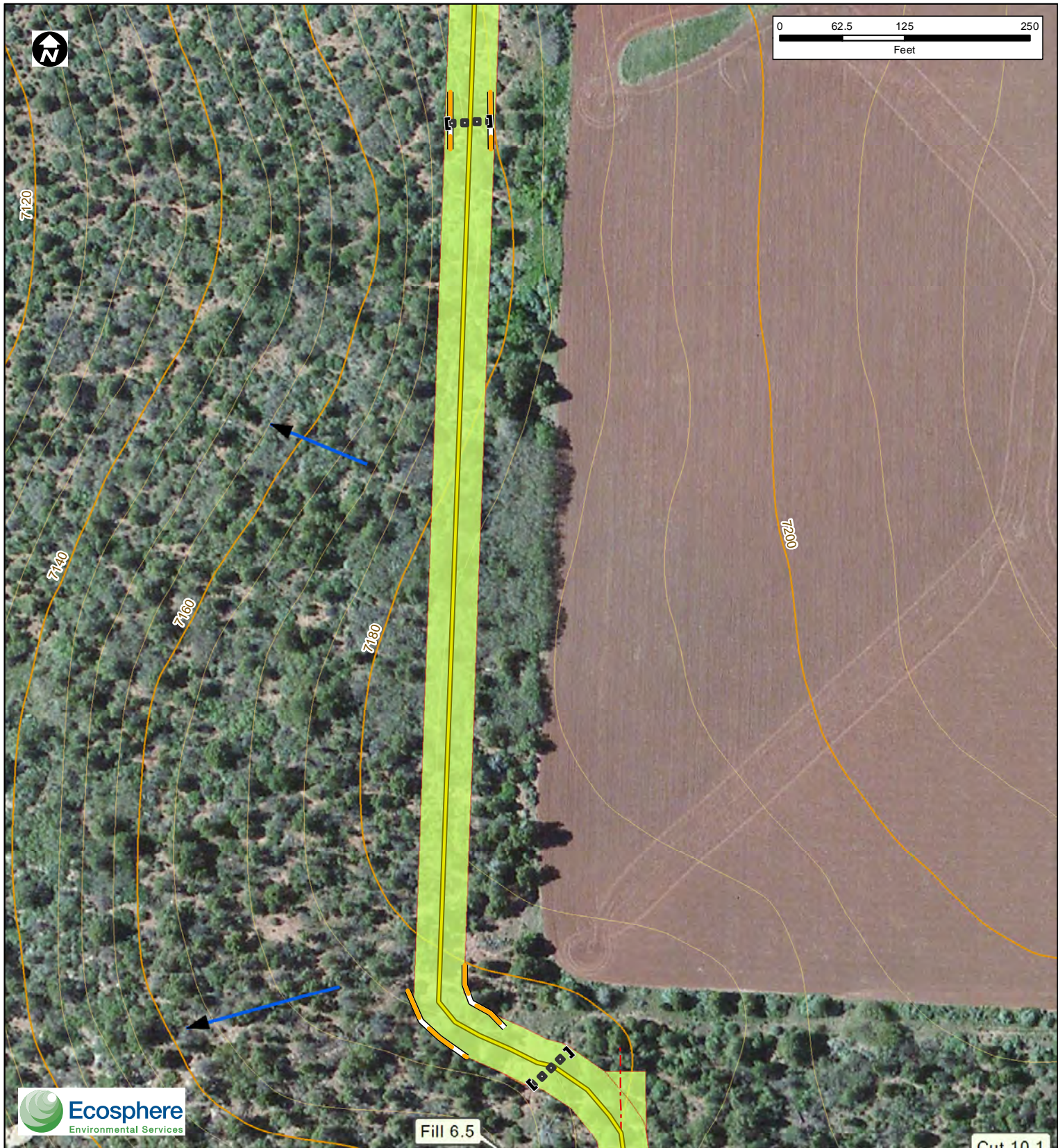
Coordinate System: NAD 1983 StatePlane Colorado South FIPS 0503 Feet



- Access Road
- Site Boundary
- 20 ft Contours
- 5 ft Contours
- Drainage Direction
- Diversion Ditch
- Culverts w Outlet Protection
- Erosion Control Wattles

**Kinder Morgan CO₂
CO, L.P.
DC-29 CO₂ Well
BMP Map
Page 2 of 4
Dolores County, Colorado
Twn. 40 N Range 18 W Sec 10
1:24k Quadangle: Cahone**

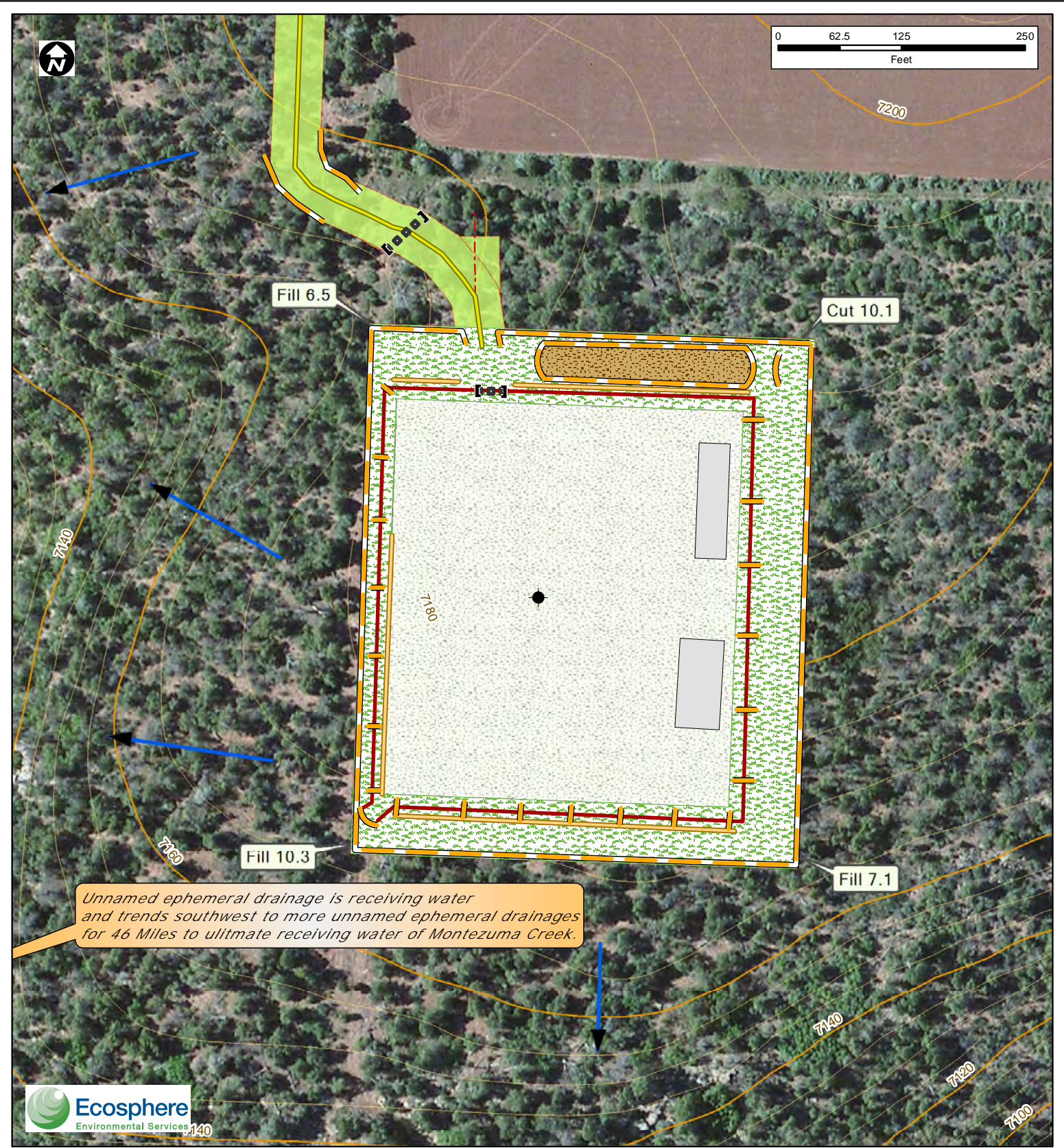
1:1,600
Date: 3/10/2016



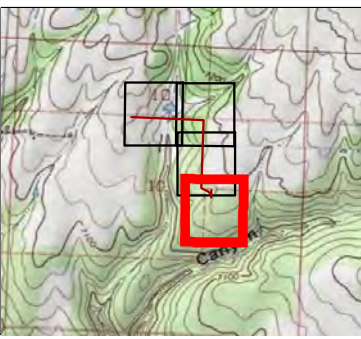
- Access Road
- Pipeline
- Site Boundary
- 20 ft Contours
- 5 ft Contours
- Drainage Direction
- Culverts w Outlet Protection
- Erosion Control Wattles

**Kinder Morgan CO₂
CO, L.P.**
DC-29 CO₂ Well
BMP Map
Page 3 of 4
Dolores County, Colorado
Twn. 40 N Range 18 W Sec 10
1:24k Quadangle: Cahone

1:1,600
Date: 3/10/2016



Unnamed ephemeral drainage is receiving water and trends southwest to more unnamed ephemeral drainages for 46 Miles to ultimate receiving water of Montezuma Creek.



- Access Road
- - - Pipeline
- Site Boundary
- 20 ft Contours
- 5 ft Contours
- Tackifier
- ▶ Drainage Direction
- Diversion Ditch
- Culverts w Outlet Protection
- Earth Berm
- Erosion Control Wattles
- Graveled Surface for Industrial Use
- Soil
- Waste / Storage

Kinder Morgan CO₂ CO, L.P.
DC-29 CO₂ Well
BMP Map
Page 4 of 4
 Dolores County, Colorado
 Twn. 40 N Range 18 W Sec 10
 1:24k Quadangle: Cahone

1:1,600
 Date: 3/10/2016