

RADIAL CEMENT BOND GAMMA RAY CCL

Company	ANADARKO PETROLEUM COMPANY		
Well	COOK 6-9		
Field	WATTENBURG		
County	WELD	State	CO
Location:	API # : 05-123-21928		Other Services
SHL: 2195' FNL 2175' FWL SE/NW LAT: 40.15450 LONG: -104.67050 SEC 9 TWP 2N RGE 65W			
Permanent Datum	GL	Elevation	4875'
Log Measured From	KB 12'		
Drilling Measured From	KB		
Elevation		K.B. 4887' D.F. 4886' G.L. 4875'	
Date	2-19-16		
Run Number	ONE		
Depth Driller	7336'		
Depth Logger	4309'		
Bottom Logged Interval	4302'		
Top Log Interval	SURFACE		
Open Hole Size	7.625"		
Type Fluid	FRESH WATER		
Density / Viscosity	1.0		
Max. Recorded Temp.	144		
Estimated Cement Top	732'		
Time Well Ready	NA		
Time Logger on Bottom	NA		
Equipment Number	7770		
Location	GREELEY, CO		
Recorded By	A.STEERMAN		
Witnessed By	NLANG		
Borehole Record			
Run Number	Bit	From	To
ONE	12.25	SURFACE	842'
TWO	7 7/8	842'	7375'
Tubing Record			
Casing Record	Size	Wgt/Ft	Top
Surface String	8.63	24#	SURFACE
Prot. String			
Production String	4.5	11.6#	SURFACE
Liner			

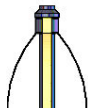
<<< Fold Here >>>

All interpretations are opinions based on inferences from electrical or other measurements and we cannot and do not guarantee the accuracy or correctness of any interpretation, and we shall not, except in the case of gross or willful negligence on our part, be liable or responsible for any loss, costs, damages, or expenses incurred or sustained by anyone resulting from any interpretation made by any of our officers, agents or employees. These interpretations are also subject to our general terms and conditions set out in our current Price Schedule.



Comments

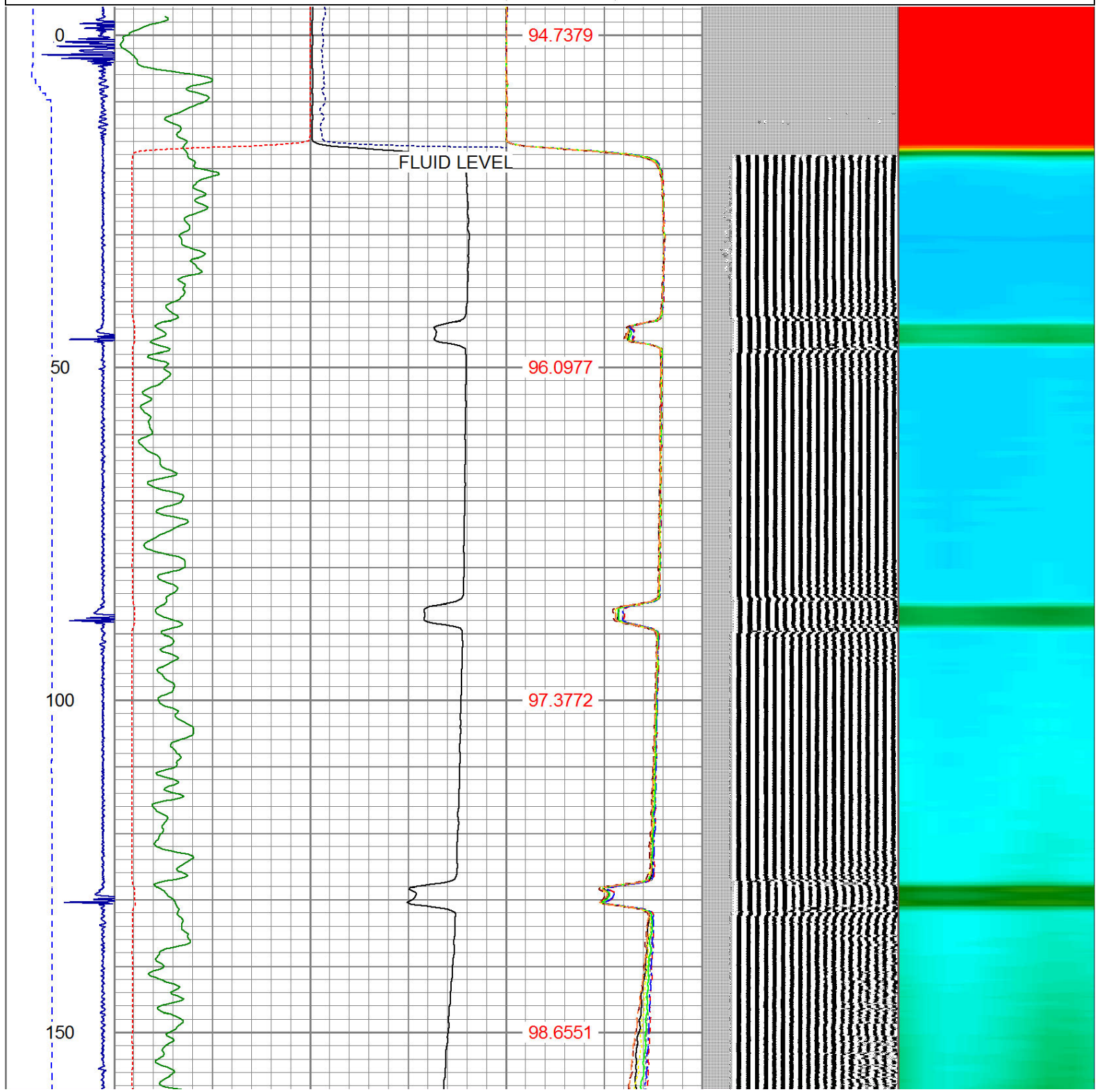
RAN CBL TO VERIFY CEMENT BOND
WELL FILLED BEFORE ARIVAL
CORRELATED TO ASAP LOG FROM 2-2-2004
NO SHIFT NEEDED

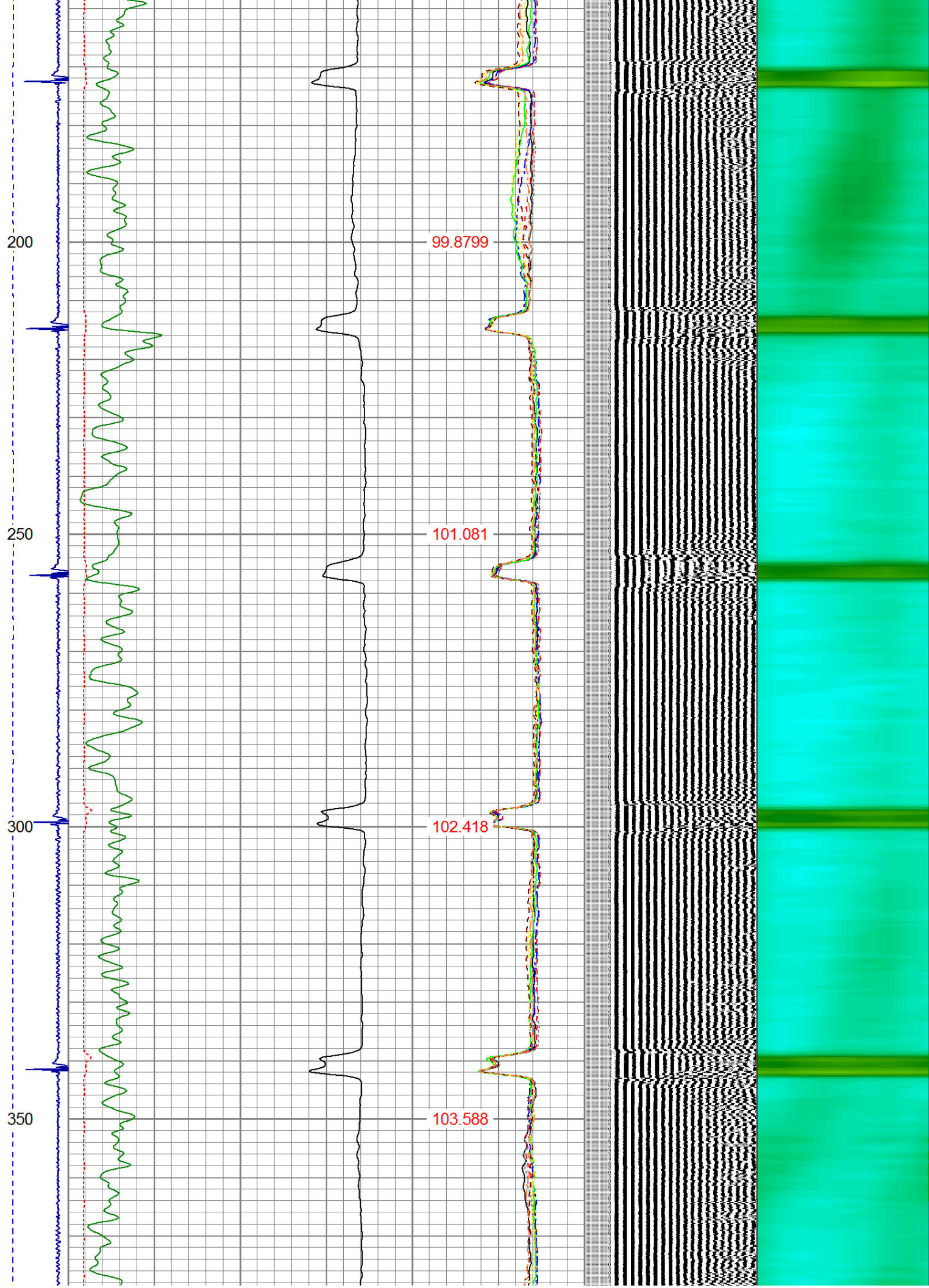
THANK YOU FOR CHOOSING IPS!

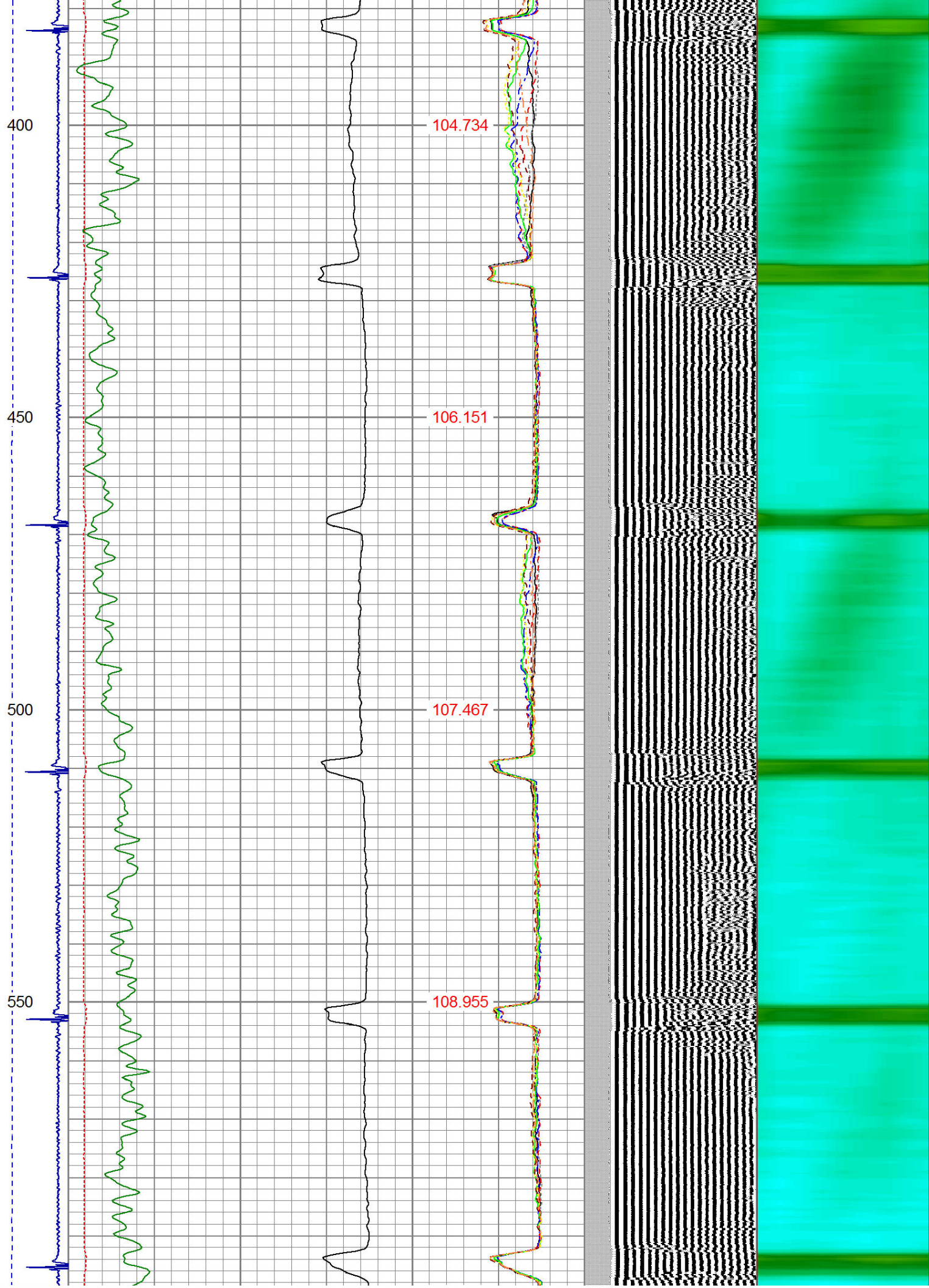
Sensor	Offset (ft)	Schematic	Description	Len (ft)	OD (in)	Wt (lb)
						

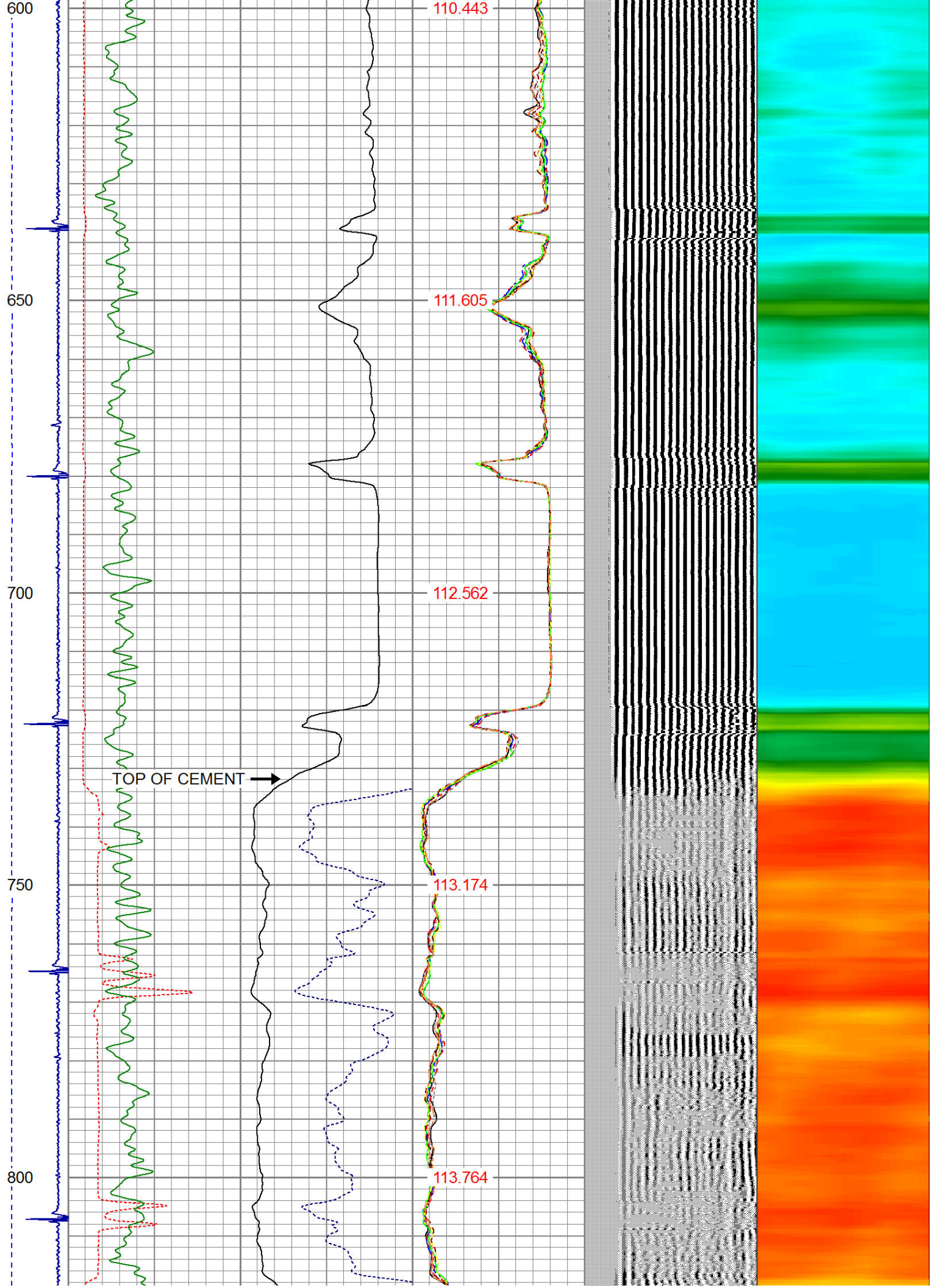
			PTS275	2.83	2.75	
HEADVOLT	16.13					
IntTemp	14.71					
WVF3FT	11.46		RBT-Probe (Base)	8.92	2.75	90.00
WVFCAL	11.46		Probe Radii Bond Tool with Digital Telemetry			
WVFS1	11.46					
WVFS2	11.46					
WVFS3	11.46					
WVFS4	11.46					
WVFS5	11.46					
WVFS6	11.46					
WVFS7	11.46					
WVFS8	11.46					
WVF5FT	10.46					
CNLSC	6.00		CNT-Probe_B (275)	2.88	2.75	40.00
CNSSC	5.17		6 bow centralizer			
CCL	3.64					
			GR-Probe (275)	4.33	2.75	30.00
			Probe 2.75"			
GR	0.90					
Dataset: cook 6-9.db: field/well/run1/pass4 Total Length: 18.96 ft Total Weight: 160.00 lb O.D. 2.75 in						

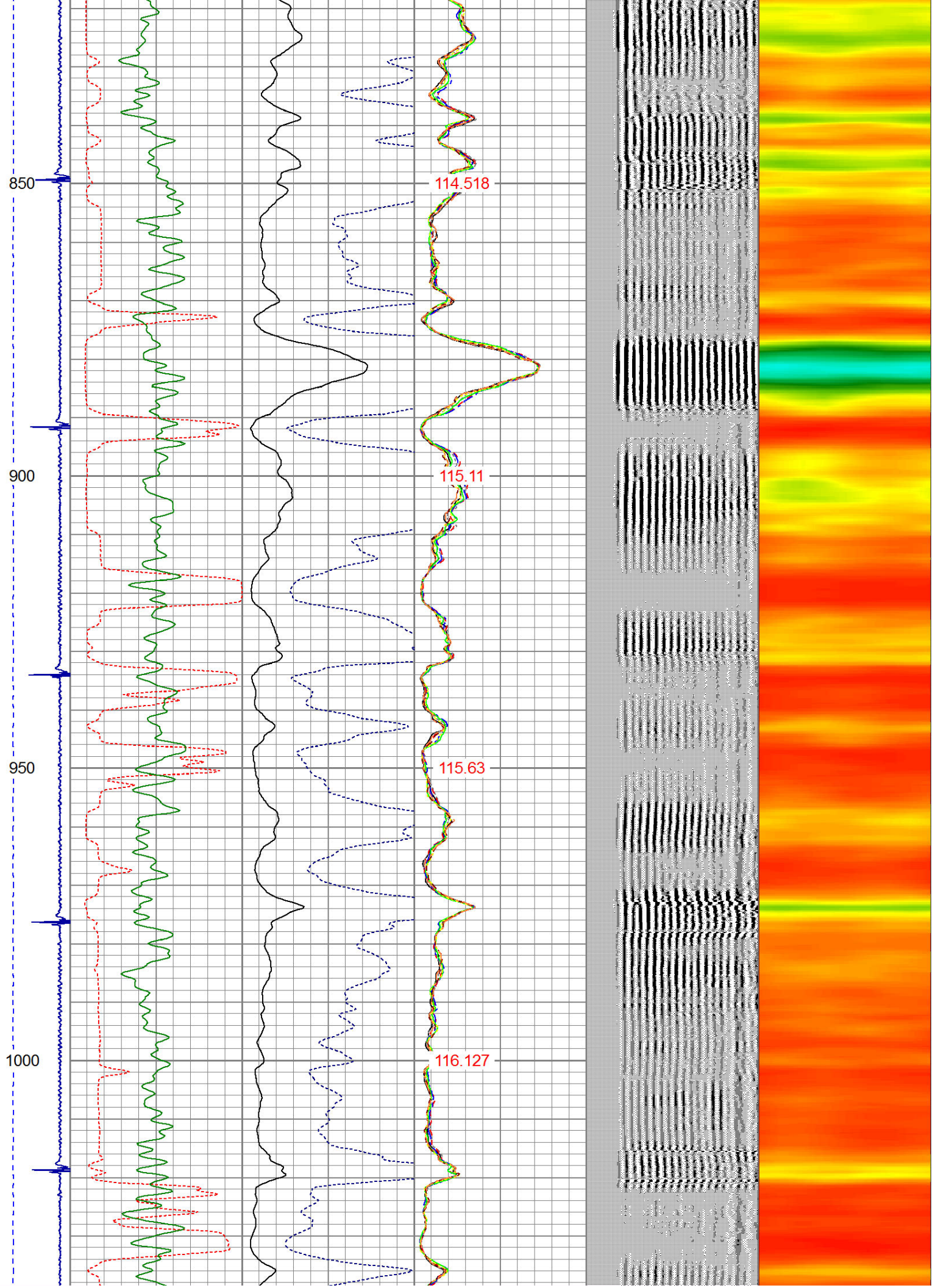
-9	CCL	1	200	TT (usec)	800	0	AMP (mV)	100	0	AMPS1	100	200	VDL	1200	1	Cement Map	8
LSPD (ft/min)	0	250	0	GR (GAPI)	200	0	AMPx5 (mV)	20	0	AMPS2	100		1	100			
			200	GR (GAPI)	400				0	AMPS3	100						
									0	AMPS4	100						
									0	AMPS5	100						
									0	AMPS6	100						
									0	AMPS7	100						
									0	AMPS8	100						
									IntTemp (degF)								

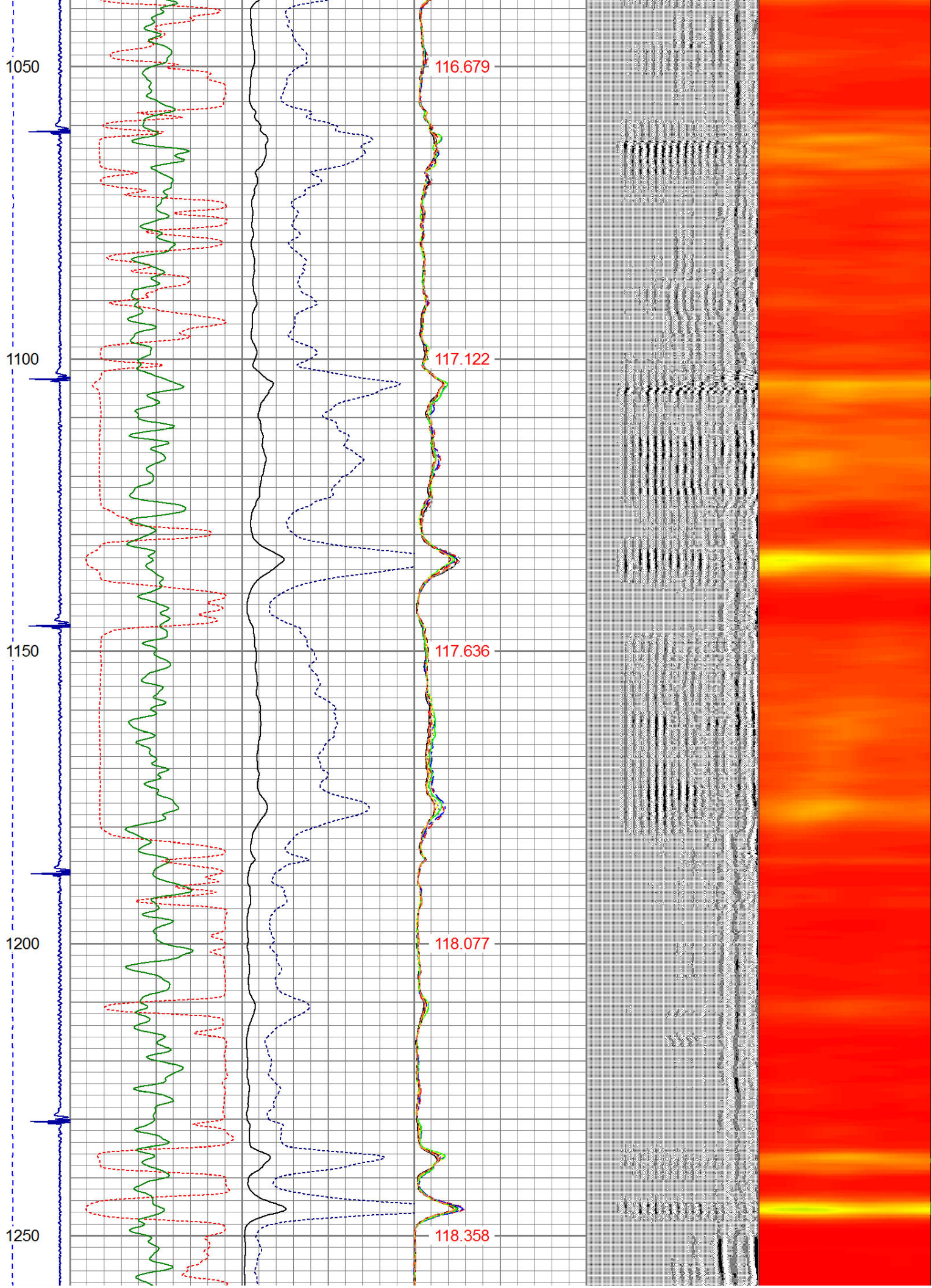


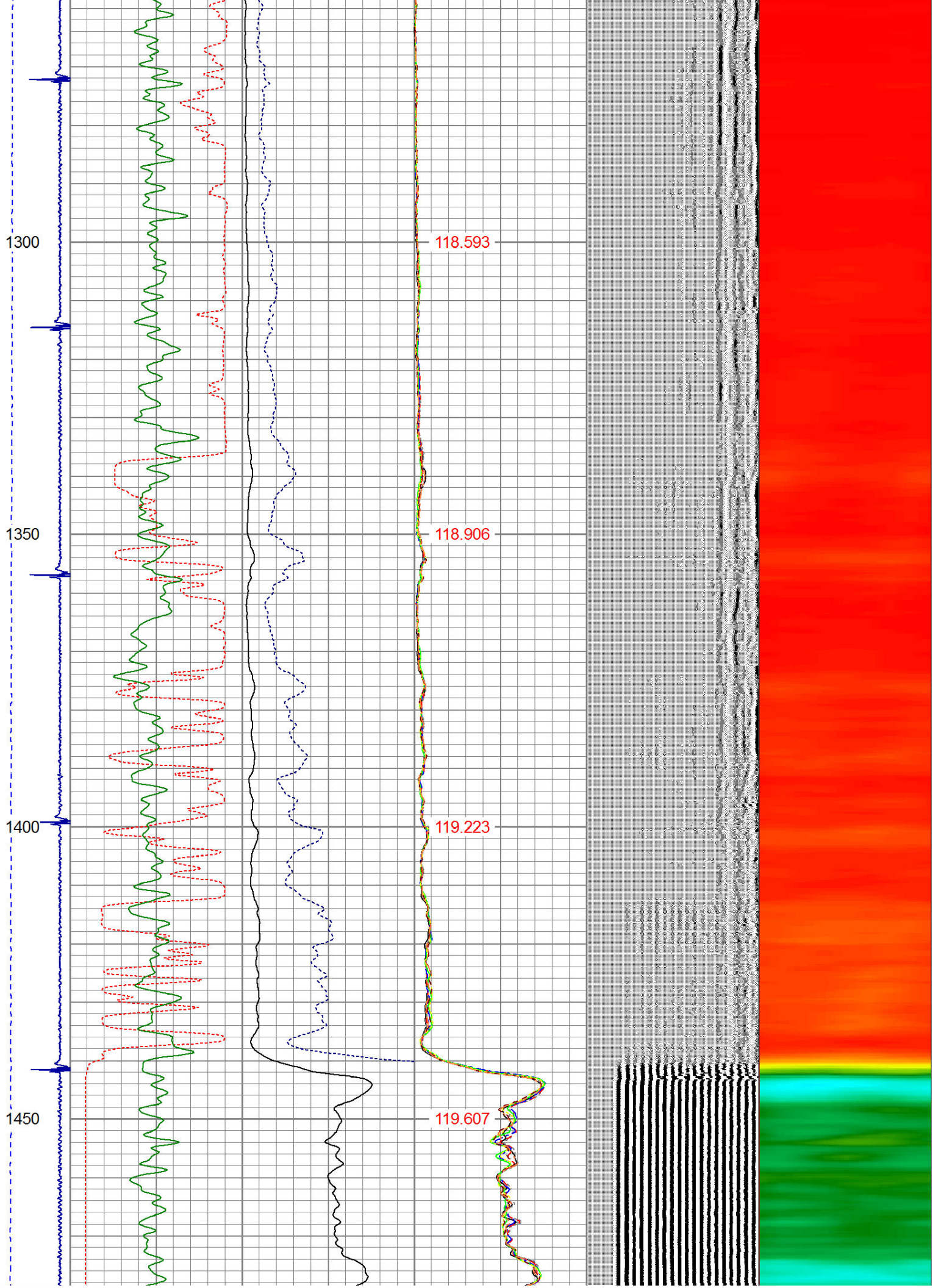


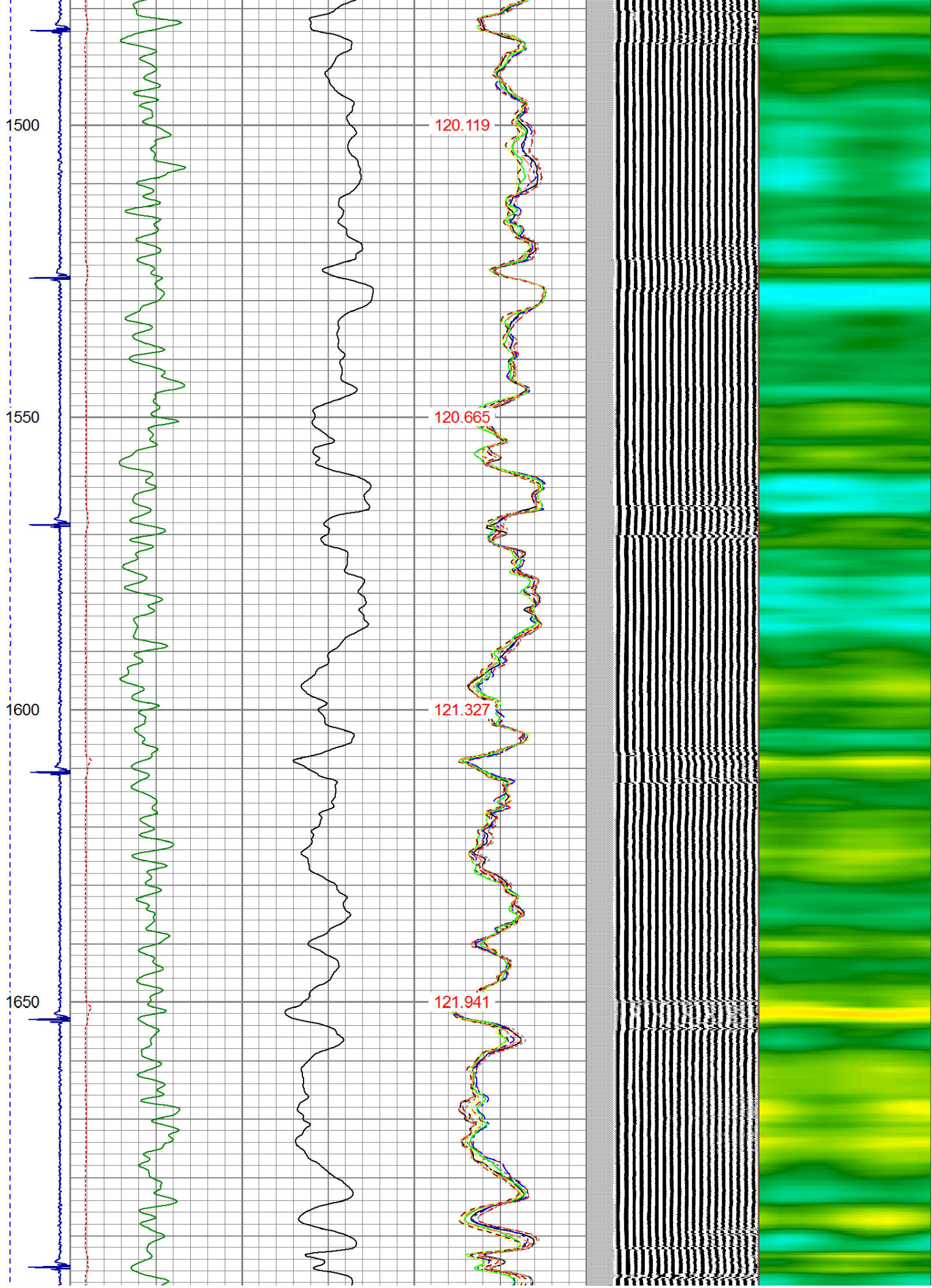


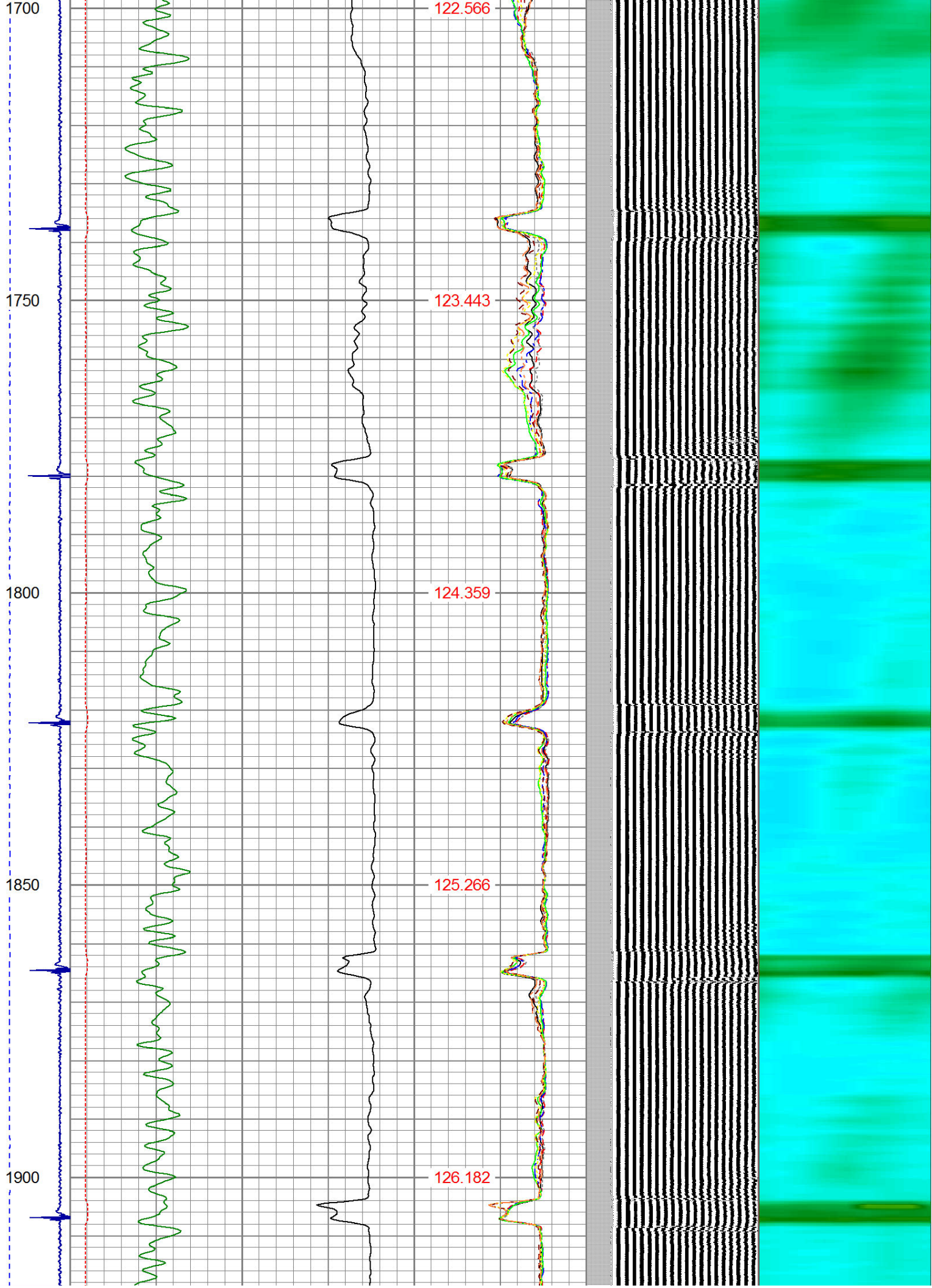


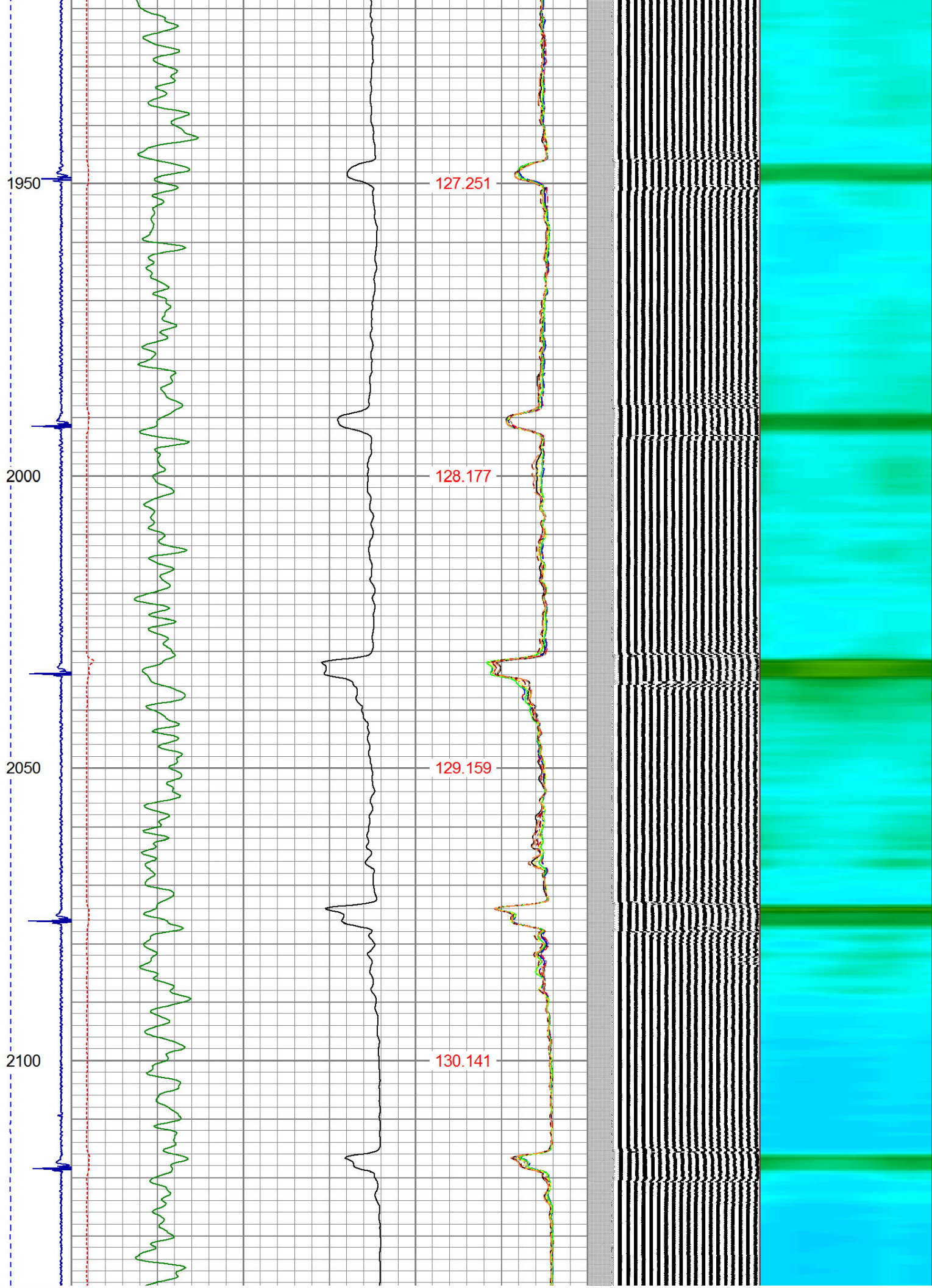




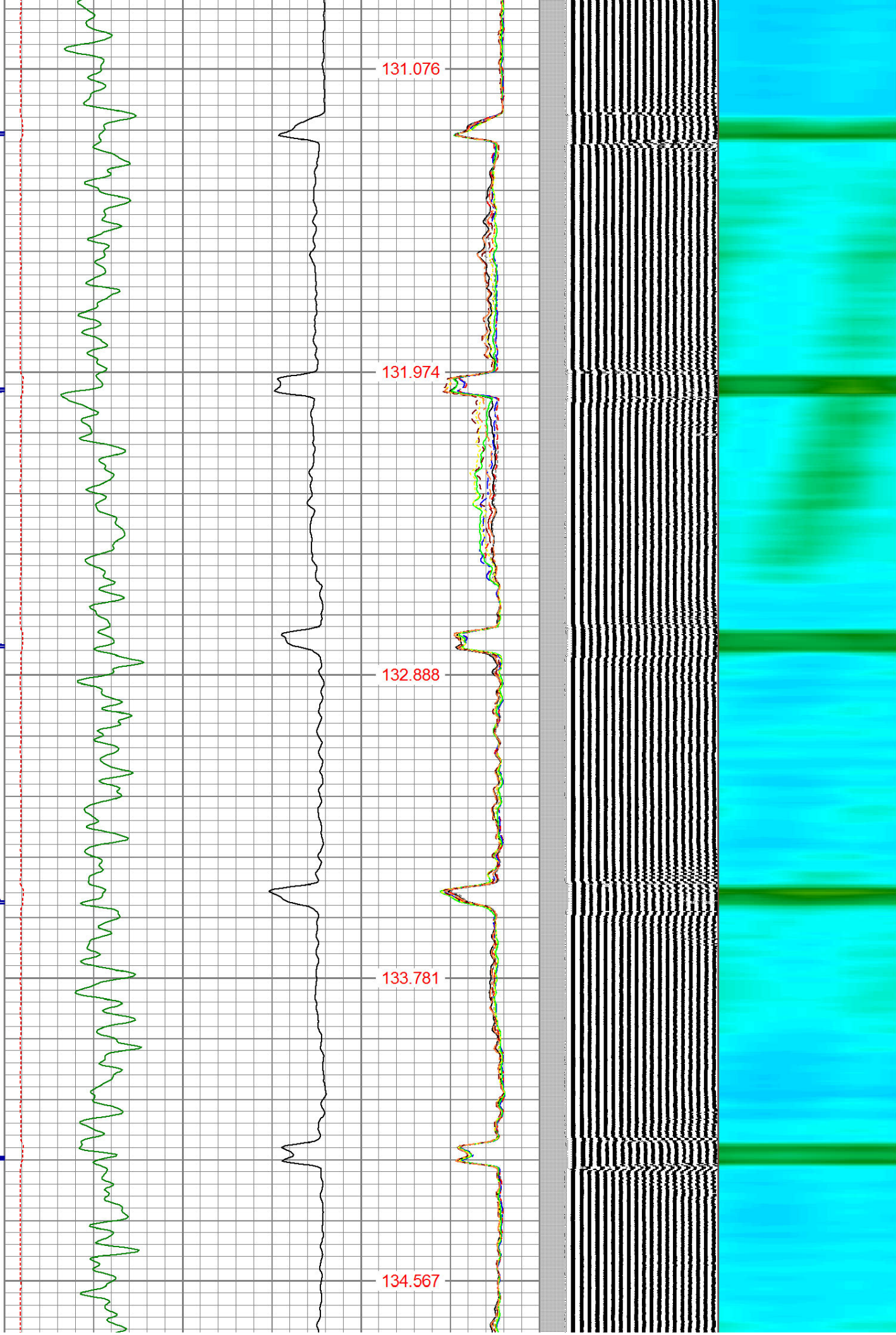


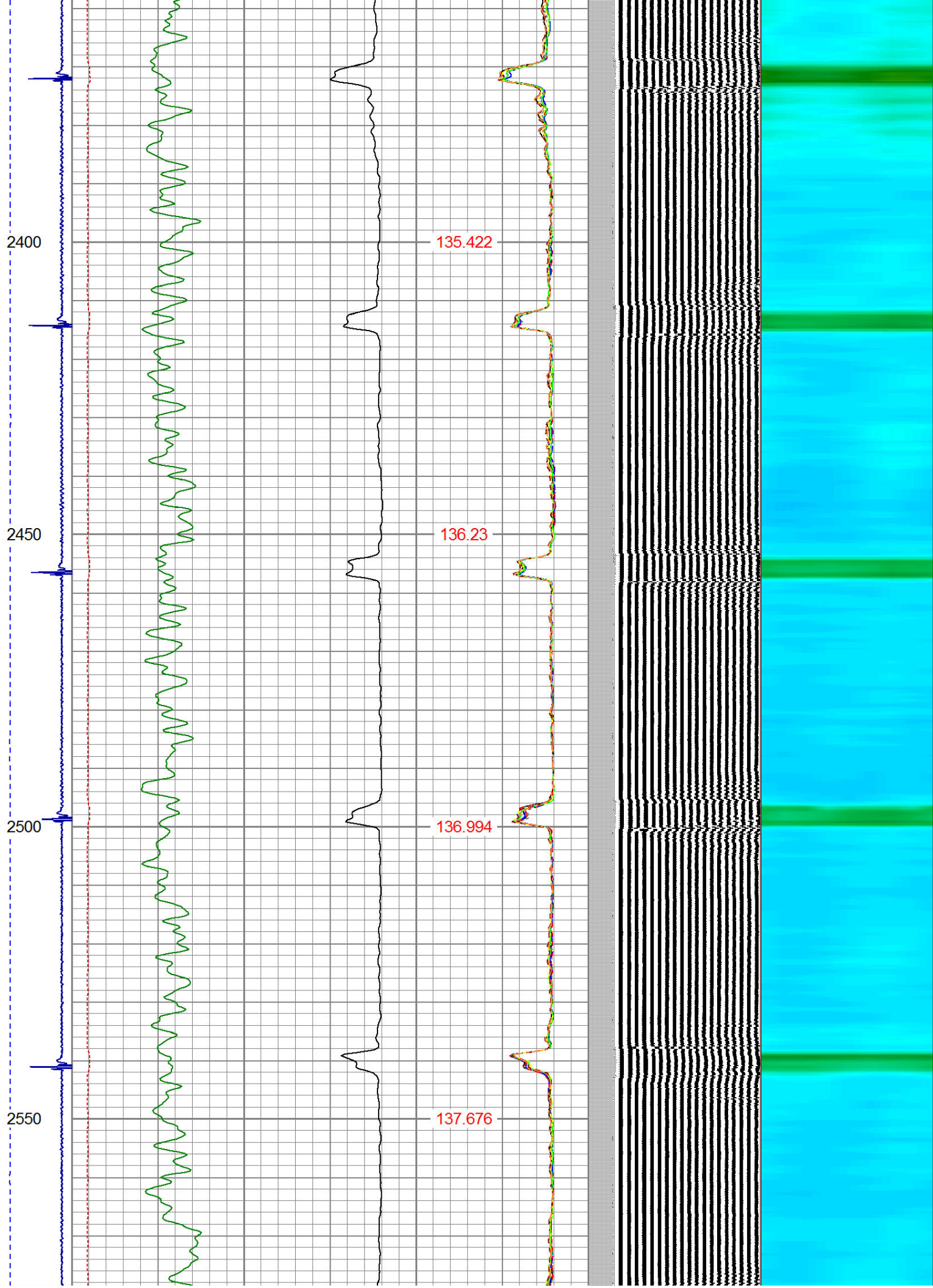


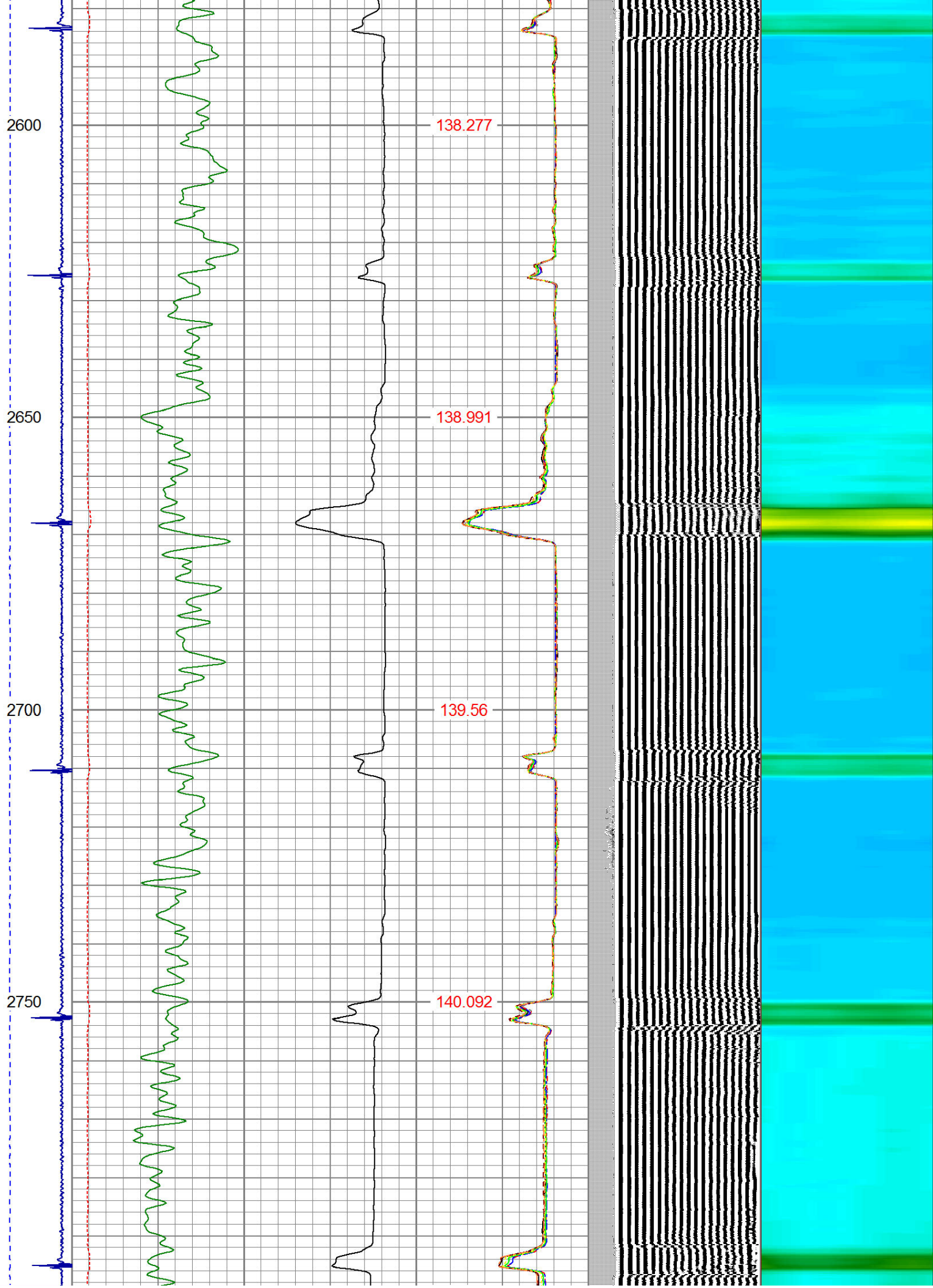


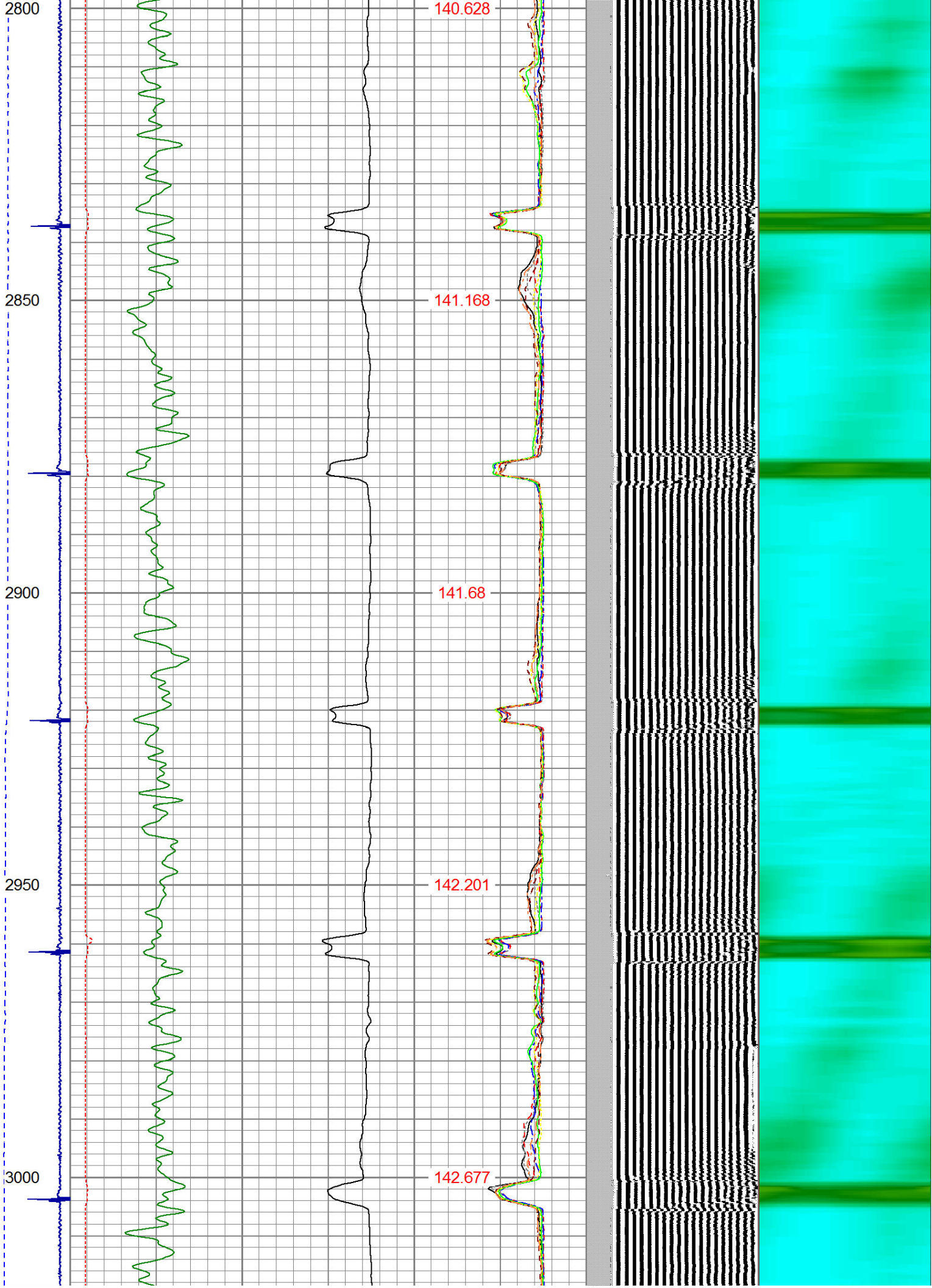


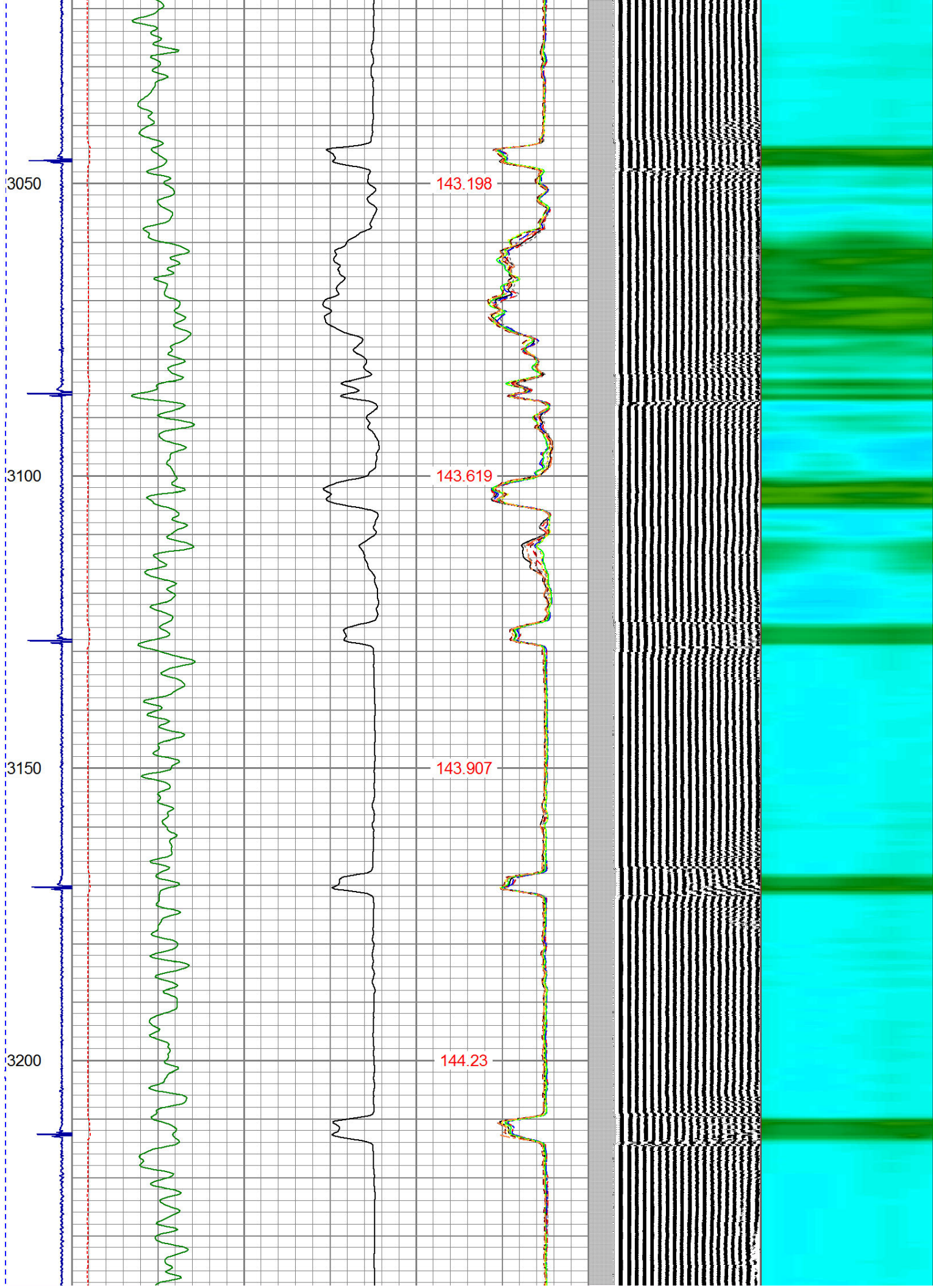
2150
2200
2250
2300
2350



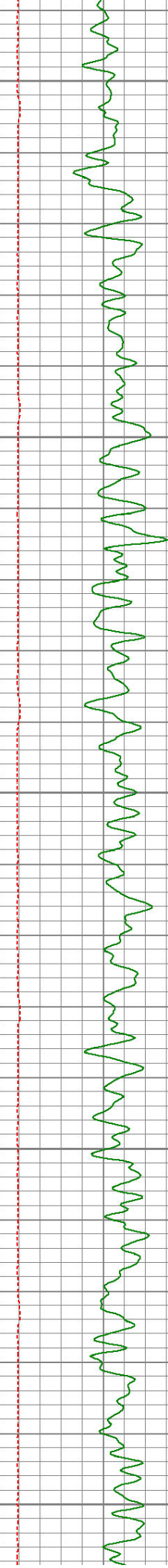




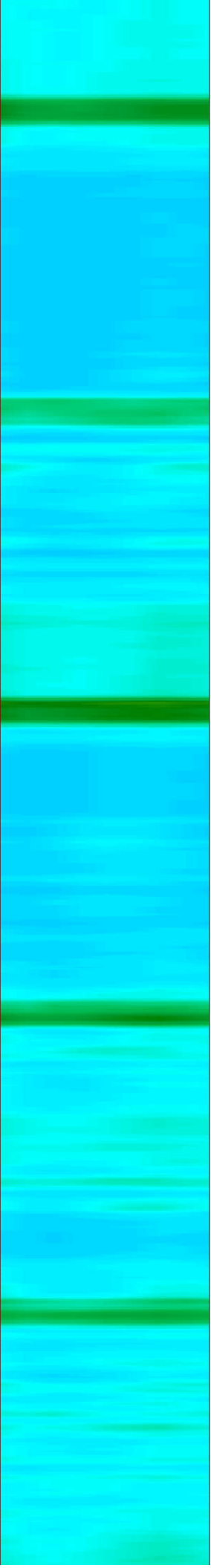
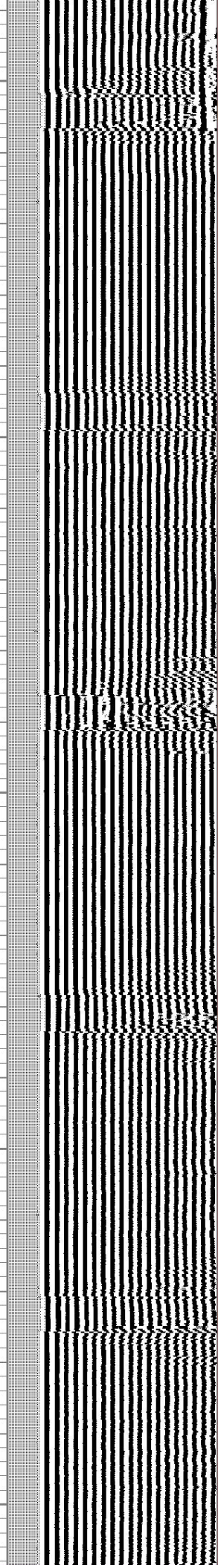
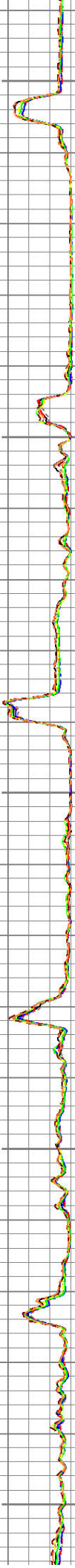




3250
3300
3350
3400
3450



144.566
144.746
144.859
144.814
144.766



3500

3550

3600

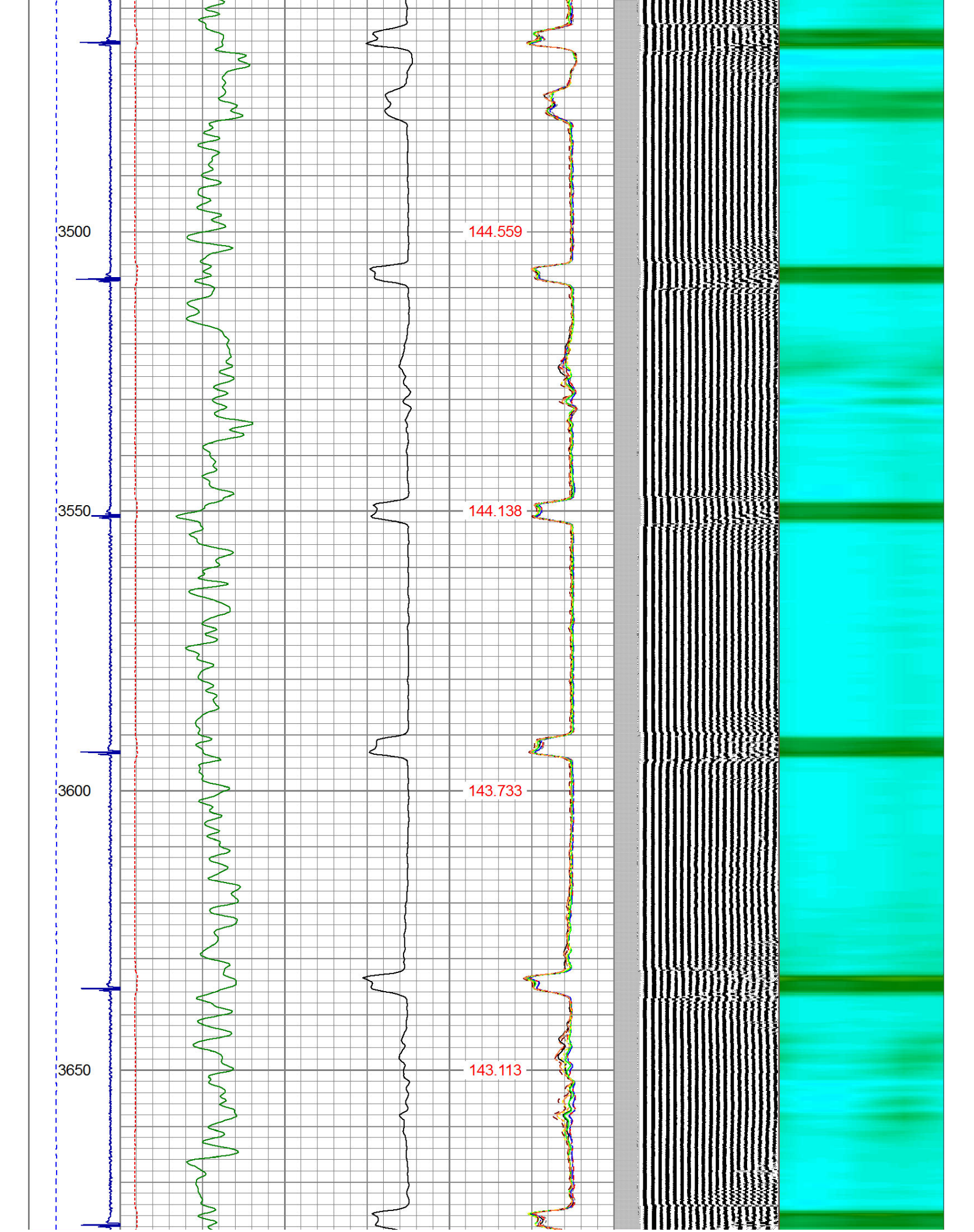
3650

144.559

144.138

143.733

143.113



3700

142.335

3750

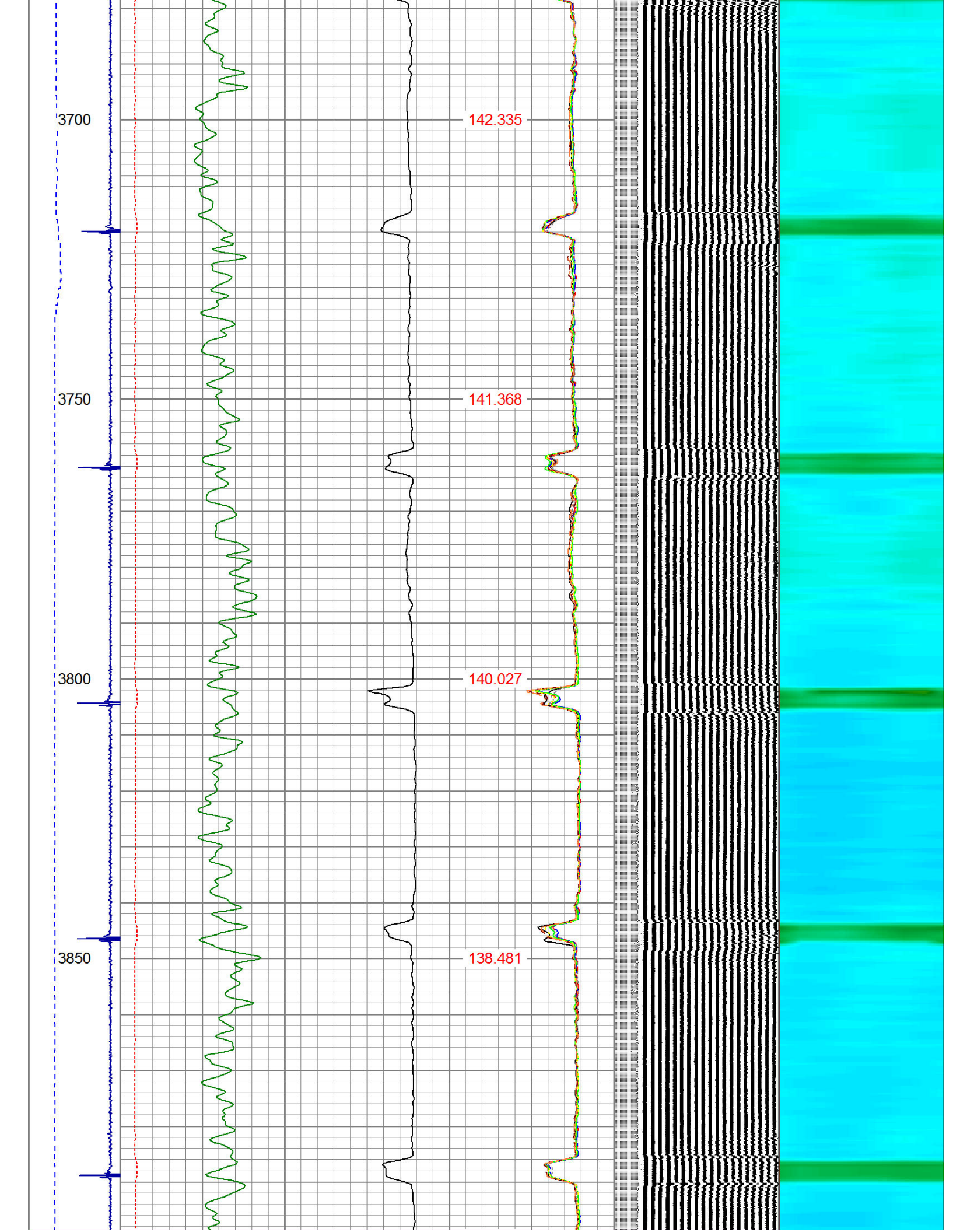
141.368

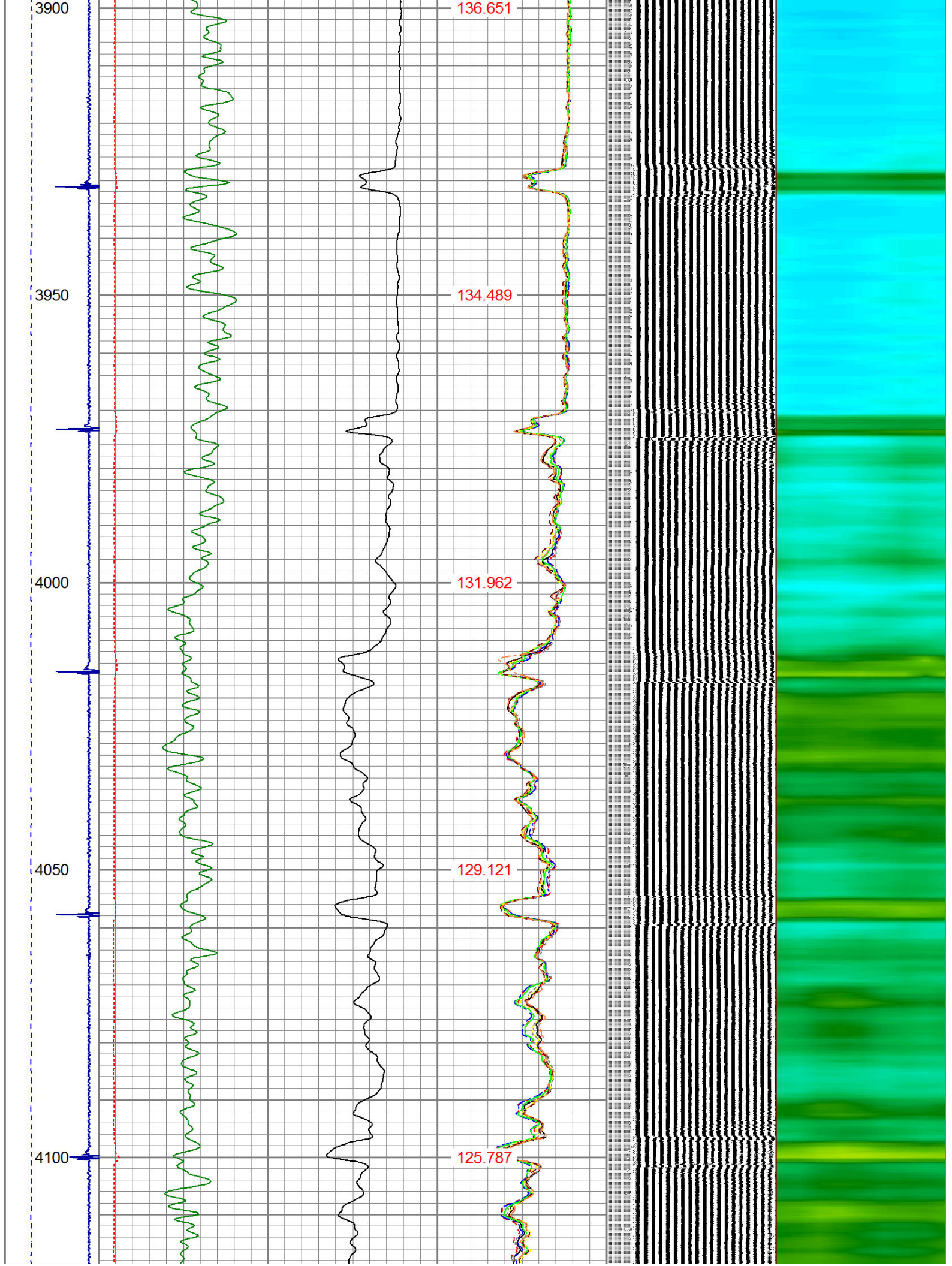
3800

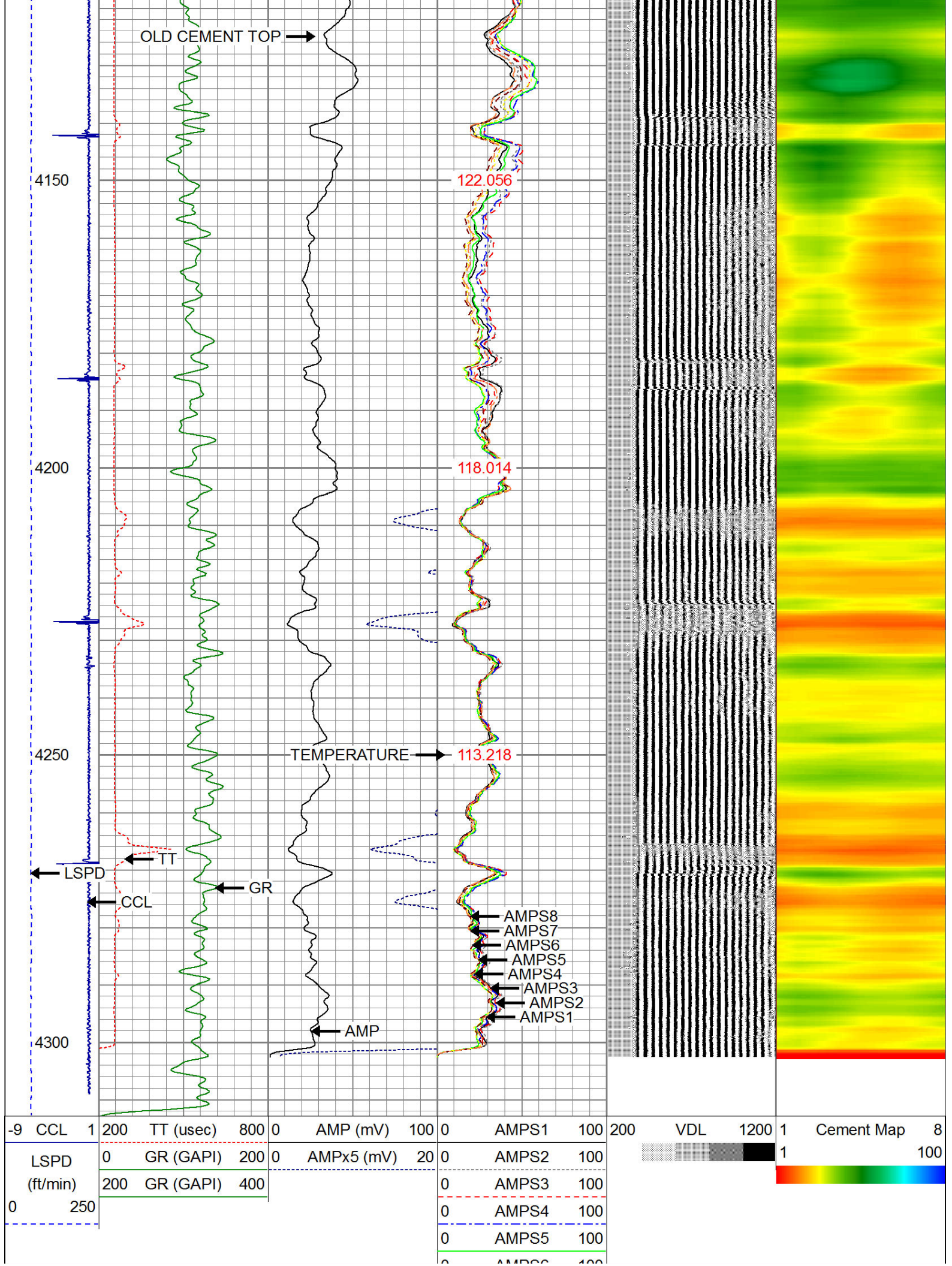
140.027

3850

138.481







0	AMPS6	100
0	AMPS7	100
0	AMPS8	100
IntTemp		
(degF)		

Calibration Report

Database File: cook 6-9.db
Dataset Pathname: pass4
Dataset Creation: Fri Feb 19 07:26:09 2016 by Log Std Casedhole 09061

Gamma Ray Calibration Report

Serial Number: 275
Tool Model: Probe
Performed: Wed Nov 06 11:09:15 2013

Calibrator Value: 100.0 GAPI

Background Reading: 35.0 cps
Calibrator Reading: 160.0 cps

Sensitivity: 0.9000 GAPI/cps

Compensated Neutron Calibration Report

Serial Number: 275
Tool Model: Probe_B

CALIBRATION Wed Jul 30 08:47:19 2008

Detector	Readings	Target	Normalization
Short Space	5001.20 cps	0.00 cps	1.0000
Long Space	1029.31 cps	0.00 cps	1.0000

PRE-SURVEY VERIFICATION

	Detector	Readings	Measured	Target
1)	Short Space	cps		
	Long Space	cps	pu	pu
2)	Short Space	cps		
	Long Space	cps	pu	
3)	Short Space	cps		
	Long Space	cps	pu	

POST-SURVEY VERIFICATION

	Detector	Readings	Measured	Target
1)	Short Space	cps		
	Long Space	cps	pu	pu
2)	Short Space	cps		
	Long Space	cps	pu	pu
3)	Short Space	cps		
	Long Space	cps	pu	pu

Segmented Cement Bond Log Calibration Report

Serial Number: Base
Tool Model: Probe

Calibration Casing Diameter:
Calibration Depth:

4.500
2693.075

in
ft

Master Calibration, performed Fri Feb 19 07:22:38 2016:

	Raw (v)		Calibrated (mv)		Results	
	Zero	Cal	Zero	Cal	Gain	Offset
3'	0.003	2.462	1.500	81.196	32.413	1.387
CAL	1.039	2.496				
5'	0.004	2.308	1.500	81.196	34.584	1.367
SUM						
S1	0.002	2.414	0.500	81.000	33.374	0.422
S2	0.006	2.482	0.500	81.000	32.512	0.319
S3	0.004	2.499	0.500	81.000	32.265	0.358
S4	0.004	2.495	0.500	81.000	32.327	0.356
S5	0.005	2.470	0.500	81.000	32.657	0.327
S6	0.006	2.441	0.500	81.000	33.059	0.313
S7	0.006	2.408	0.500	81.000	33.519	0.293
S8	0.004	2.407	0.500	81.000	33.511	0.355

Internal Reference Calibration, performed Tue Jun 05 07:53:42 2012:

	Raw (v)		Calibrated (v)		Results	
	Zero	Cal	Zero	Cal	Gain	Offset
CAL	0.000	0.000	1.039	2.496	1.000	0.000

Air Zero Calibration, performed Fri Feb 19 06:44:08 2016:

	Raw (v)		Calibrated (v)		Results	
	Zero		Zero			Offset
3'	0.000		0.000			0.000
5'	0.000		0.000			0.000
SUM						
S1	0.000		0.000			0.000
S2	0.000		0.000			0.000
S3	0.000		0.000			0.000
S4	0.000		0.000			0.000
S5	0.000		0.000			0.000
S6	0.000		0.000			0.000
S7	0.000		0.000			0.000
S8	0.000		0.000			0.000



CompanyANADARKO PETROLEUM COMPANY
Well COOK 6-9
Field WATTENBURG
County WELD
State CO