

Interim Reclamation Inspection



Photo 1. Photo taken of Tank Battery sign, servicing Mandy 43-28 (API# 123-10604).

Interim Reclamation Inspection



Photo 2. Photo taken from the southeast tank battery location, facing East. Need to control stormwater runoff that minimizes erosion and transport of sediment offsite per Rule 1002. Erosion and transport of sediment is occurring east, offsite, onto cropland. Refer to following photos illustrating erosion and transport of sediment on cropland.

Interim Reclamation Inspection



Photo 3. Photo taken east of tank battery location, facing Southeast. Photo illustrating erosion and transport of sediment on cropland.

Interim Reclamation Inspection



Photo 4. Photo taken east of tank battery location, facing Southeast. Photo illustrating erosion and transport of sediment on cropland.

Interim Reclamation Inspection



Photo 5. Photo taken east of tank battery location, facing Southeast. Photo illustrating erosion and transport of sediment on cropland.

Interim Reclamation Inspection



Photo 6. Photo taken east of tank battery location, facing Southeast. Photo illustrating erosion and transport of sediment on cropland.

Interim Reclamation Inspection



Photo 7. Photo taken east of tank battery location, facing West towards tank battery. Photo illustrating erosion and transport of sediment on cropland, then onto CR 4.

Interim Reclamation Inspection

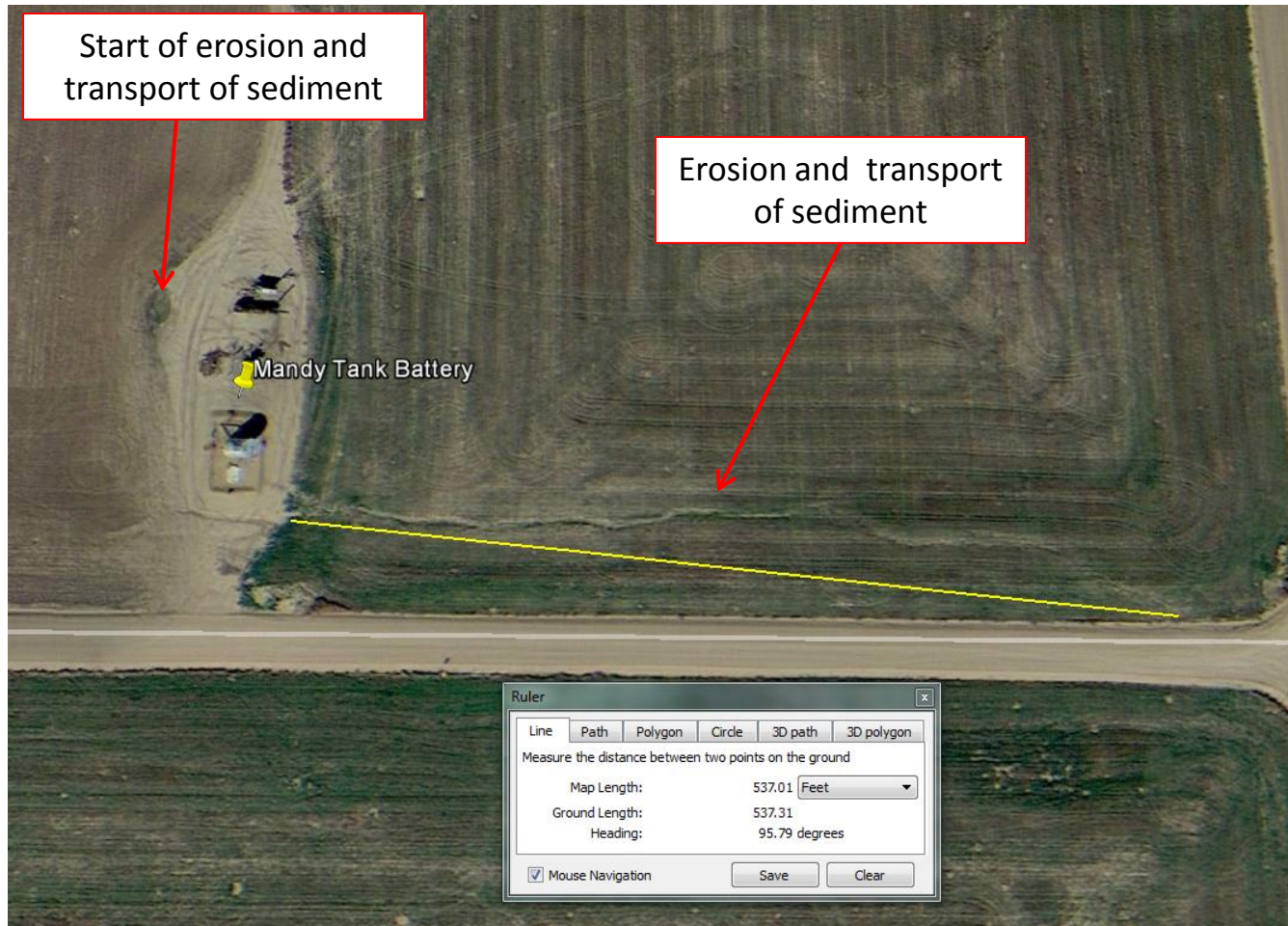


Photo 8. Google Earth aerial photo taken 10/9/2015. Erosion and transport of sediment initiates on the western area of the tank battery, then travels east through cropland, and then onto the north roadside ditch of CR 4, totaling approximately 535 feet.