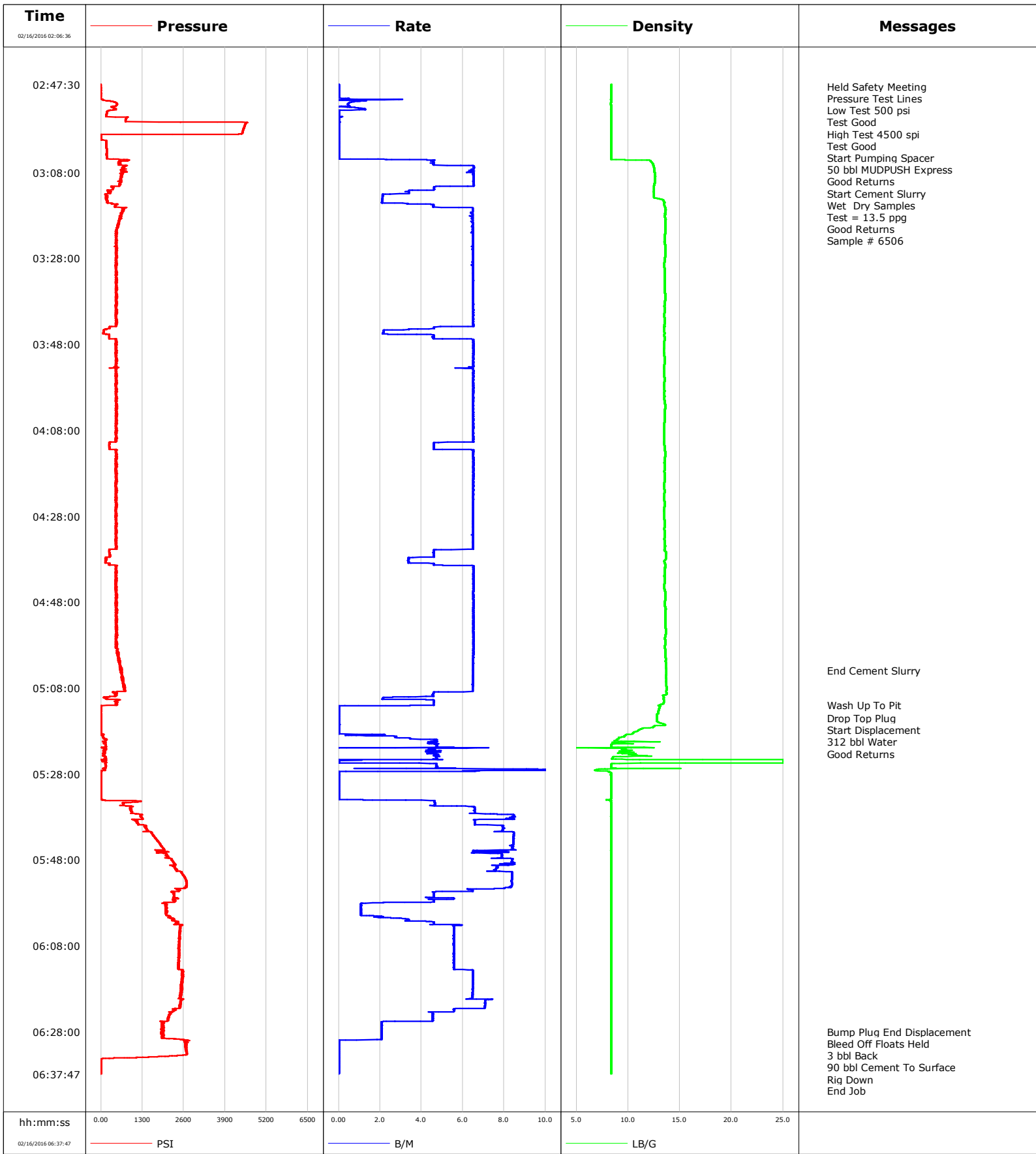


Well	Horsetail 07E-1836	Client	Whiting
Field		SIR No.	DJT7-00032
Engineer	Jordan Moreland / Stacy Terry	Job Type	5 1/2 Monobore
Country		Job Date	



						Customer		Job Number		
						Whiting		DJT7-00032		
Well			Location (legal)			Schlumberger Location			Job Start	
Horsetail 07E-1836									Feb/16/2016	
Field		Formation Name/Type			Deviation	Bit Size		Well MD	Well TVD	
					deg	8.5 in		ft	ft	
County		State/Province			BHP	BHST	BHCT	Pore Press. Gradient		
		Colorado			psi	214 degF	214 degF	lb/gal		
Well Master		API/UWI								
0631641687		05123416460000								
Rig Name	Drilled For		Service Via		Casing/Liner					
Unit 409					Depth, ft	Size, in	Weight, lb/ft	Grade	Thread	
Offshore Zone	Well Class		Well Type		14130.0	5.5	20.0	P110	BUTT	
	New		Development		0.0	0.0	0.0			
Drilling Fluid Type		Max. Density	Plastic Viscosity		Tubing/Drill Pipe					
		lb/gal	cP		T/D	Depth, ft	Size, in	Weight, lb/ft	Grade	Thread
Service Line	Job Type									
Cementing	5 1/2 Monobore									
Max. Allowed Tub. Press	Max. Allowed Ann. Press		WH Connection		Perforations/Open Hole					
psi	psi				Top, ft	Bottom, ft	shot/ft	No. of Shots	Total Interval	
Service Instructions Rate And Density Checked 50 bbl MUDPUSH Express 2275 sks 13.5 Slurry Displace 312 bbl Water					ft	ft			ft	
					ft	ft			Diameter	
					ft	ft			in	
Treat Down	Displacement		Packer Type		Packer Depth					
1	312.0 bbl				ft					
Tubing Vol.	Casing Vol.		Annular Vol.		Openhole Vol.					
bbl	313.0 bbl		591.0 bbl		1077.0 bbl					
Casing/Tubing Secured	1 Hole Vol. Circulated prior to Cement	Casing Tools			Squeeze Job					
<input checked="" type="checkbox"/>	<input checked="" type="checkbox"/>									
Lift Pressure	Shoe Type			Shoe Depth		Squeeze Type				
psi	Float			14130.0 ft						
Pipe Rotated	Pipe Reciprocated	Stage Tool Type			Tool Type					
<input checked="" type="checkbox"/>	<input type="checkbox"/>									
No. Centralizers	Top Plugs	Bottom Plugs	Stage Tool Depth			Tool Depth				
	1	1	ft			ft				
Cement Head Type	Stage Tool Depth			Tail Pipe Size						
Single	ft			in						
Job Scheduled For	Arrived on Location		Leave Location		Collar Type		Tail Pipe Depth			
Feb/16/2016	Feb/16/2016		Feb/16/2016		Float		ft			
Collar Depth	Sqz. Total Vol.									
14081.0 ft	bbl									
Date	Time 24-hr clock	Treating Pressure PSI	Flow Rate B/M	Density LB/G	Volume BBL	Backside NULL	Well NULL	Message		
02/16/2016	02:06:36	-3	0.0	0.00	0.0	-3750	-3750			
02/16/2016	02:08:36	-3	0.0	0.00	0.0	-3750	-3750			
02/16/2016	02:10:36	-3	0.0	0.00	0.0	-3750	-3750			
02/16/2016	02:12:36	-4	0.0	0.00	0.0	-3750	-3750			
02/16/2016	02:14:36	34	1.9	8.31	3.5	-3750	-3750			
02/16/2016	02:16:36	4	0.0	8.53	6.5	-3750	-3750			
02/16/2016	02:18:36	-0	0.0	8.49	6.5	-3750	-3750			
02/16/2016	02:20:36	-0	0.0	8.48	6.5	-3750	-3750			
02/16/2016	02:22:36	54	3.0	8.36	7.4	-3750	-3750			
02/16/2016	02:24:36	-1	0.0	8.35	9.0	-3750	-3750			
02/16/2016	02:26:36	-0	0.0	8.35	9.0	-3750	-3750			
02/16/2016	02:28:36	6	0.1	8.36	9.4	-3750	-3750			
02/16/2016	02:30:36	-0	0.0	8.35	9.4	-3750	-3750			
02/16/2016	02:32:36	-1	0.0	8.35	9.4	-3750	-3750			
02/16/2016	02:34:36	-0	0.0	8.35	9.4	-3750	-3750			
02/16/2016	02:36:36	-0	0.0	8.35	9.4	-3750	-3750			
02/16/2016	02:38:36	-1	0.0	8.35	9.4	-3750	-3750			
02/16/2016	02:40:36	-0	0.0	8.35	11.0	-3750	-3750			
02/16/2016	02:42:36	-0	0.0	8.35	11.0	-3750	-3750			
02/16/2016	02:44:36	-0	0.0	8.35	11.0	-3750	-3750			
02/16/2016	02:46:36	1	0.0	8.36	11.0	-3750	-3750			

Well			Field			Job Start		Customer		Job Number
Horsetail 07E-1836						Feb/16/2016		Whiting		DJT7-00032
Date	Time 24-hr clock	Treating Pressure PSI	Flow Rate B/M	Density LB/G	Volume BBL	Backside NULL	Well NULL	Message		
02/16/2016	02:48:00	-0	0.0	8.35	11.0	-3750	-3750	Held Safety Meeting		
02/16/2016	02:48:36	-0	0.0	8.36	11.0	-3750	-3750			
02/16/2016	02:49:00	-1	0.0	8.35	11.0	-3750	-3750	Pressure Test Lines		
02/16/2016	02:50:00	0	0.0	8.35	11.0	-3750	-3750	Low Test 500 psi		
02/16/2016	02:50:36	-2	0.0	8.35	11.0	-3750	-3750			
02/16/2016	02:51:00	51	2.7	8.34	0.1	-3750	-3750	High Test 4500 spi		
02/16/2016	02:52:36	453	0.5	8.35	1.3	-3750	-3750			
02/16/2016	02:53:00	402	0.9	8.35	1.4	-3750	-3750	Test Good		
02/16/2016	02:54:36	170	0.0	8.35	2.0	-3750	-3750			
02/16/2016	02:56:36	4546	0.0	8.35	2.0	-3750	-3750			
02/16/2016	02:58:36	4447	0.0	8.35	2.0	-3750	-3750			
02/16/2016	03:00:00	5	0.0	8.35	2.0	-3750	-3750	Start Pumping Spacer		
02/16/2016	03:00:36	163	0.0	8.35	2.0	-3750	-3750			
02/16/2016	03:01:00	166	0.0	8.35	2.0	-3750	-3750	50 bbl MUDPUSH Express		
02/16/2016	03:02:00	169	0.0	8.35	2.0	-3750	-3750	Good Returns		
02/16/2016	03:02:36	172	0.0	8.35	2.0	-3750	-3750			
02/16/2016	03:04:36	175	0.0	8.35	2.0	-3750	-3750			
02/16/2016	03:06:36	756	6.5	12.47	9.8	-3750	-3750			
02/16/2016	03:08:36	633	6.5	12.60	22.8	-3750	-3750			
02/16/2016	03:10:36	603	6.5	12.55	35.8	-3750	-3750			
02/16/2016	03:12:00	371	4.6	12.50	43.6	-3750	-3750	Start Cement Slurry		
02/16/2016	03:12:36	252	3.4	12.49	45.8	-3750	-3750			
02/16/2016	03:13:00	192	3.0	12.49	47.1	-3750	-3750	Wet Dry Samples		
02/16/2016	03:14:00	196	2.1	12.70	49.3	-3750	-3750	Test = 13.5 ppg		
02/16/2016	03:14:36	181	2.1	13.41	50.5	-3750	-3750			
02/16/2016	03:15:00	232	2.1	13.52	51.4	-3750	-3750	Good Returns		
02/16/2016	03:16:00	463	4.6	13.55	0.3	-3750	-3750	Sample # 6506		
02/16/2016	03:16:36	717	6.5	13.61	3.9	-3750	-3750			
02/16/2016	03:18:36	613	6.5	13.58	16.8	-3750	-3750			
02/16/2016	03:20:36	524	6.5	13.60	29.8	-3750	-3750			
02/16/2016	03:22:36	475	6.5	13.56	42.7	-3750	-3750			
02/16/2016	03:24:36	478	6.5	13.54	55.7	-3750	-3750			
02/16/2016	03:26:36	482	6.5	13.59	68.7	-3750	-3750			
02/16/2016	03:28:36	482	6.5	13.54	81.7	-3750	-3750			
02/16/2016	03:30:36	475	6.5	13.53	94.7	-3750	-3750			
02/16/2016	03:32:36	475	6.5	13.56	107.6	-3750	-3750			
02/16/2016	03:34:36	495	6.5	13.56	120.6	-3750	-3750			
02/16/2016	03:36:36	488	6.5	13.57	133.6	-3750	-3750			
02/16/2016	03:38:36	506	6.5	13.54	146.6	-3750	-3750			
02/16/2016	03:40:36	467	6.5	13.54	159.6	-3750	-3750			
02/16/2016	03:42:36	471	6.5	13.55	172.6	-3750	-3750			
02/16/2016	03:44:36	154	3.4	13.49	184.1	-3750	-3750			
02/16/2016	03:46:36	261	4.6	13.52	190.7	-3750	-3750			
02/16/2016	03:48:36	473	6.5	13.49	203.4	-3750	-3750			
02/16/2016	03:50:36	474	6.5	13.50	216.4	-3750	-3750			
02/16/2016	03:52:36	473	6.5	13.53	229.4	-3750	-3750			
02/16/2016	03:54:36	475	6.5	13.49	242.3	-3750	-3750			
02/16/2016	03:56:36	491	6.5	13.53	255.3	-3750	-3750			
02/16/2016	03:58:36	469	6.5	13.51	268.3	-3750	-3750			
02/16/2016	04:00:36	484	6.5	13.50	281.3	-3750	-3750			
02/16/2016	04:02:36	504	6.5	13.57	294.3	-3750	-3750			
02/16/2016	04:04:36	514	6.5	13.54	307.3	-3750	-3750			
02/16/2016	04:06:36	490	6.5	13.51	320.3	-3750	-3750			
02/16/2016	04:08:36	451	6.5	13.51	333.3	-3750	-3750			

Well			Field			Job Start		Customer		Job Number
Horsetail 07E-1836						Feb/16/2016		Whiting		DJT7-00032
Date	Time 24-hr clock	Treating Pressure PSI	Flow Rate B/M	Density LB/G	Volume BBL	Backside NULL	Well NULL	Message		
02/16/2016	04:12:36	449	6.5	13.55	356.1	-3750	-3750			
02/16/2016	04:14:36	501	6.5	13.56	369.1	-3750	-3750			
02/16/2016	04:16:36	492	6.5	13.55	382.1	-3750	-3750			
02/16/2016	04:18:36	462	6.5	13.55	395.1	-3750	-3750			
02/16/2016	04:20:36	455	6.5	13.47	408.2	-3750	-3750			
02/16/2016	04:22:36	492	6.5	13.51	421.2	-3750	-3750			
02/16/2016	04:24:36	474	6.5	13.52	434.2	-3750	-3750			
02/16/2016	04:26:36	456	6.5	13.47	447.2	-3750	-3750			
02/16/2016	04:28:36	473	6.5	13.51	460.1	-3750	-3750			
02/16/2016	04:30:36	467	6.5	13.53	473.1	-3750	-3750			
02/16/2016	04:32:36	475	6.5	13.54	486.1	-3750	-3750			
02/16/2016	04:34:36	470	6.5	13.56	499.1	-3750	-3750			
02/16/2016	04:36:36	269	4.6	13.67	510.5	-3750	-3750			
02/16/2016	04:38:36	138	3.4	13.48	518.5	-3750	-3750			
02/16/2016	04:40:36	485	6.5	13.55	529.4	-3750	-3750			
02/16/2016	04:42:36	489	6.5	13.52	542.5	-3750	-3750			
02/16/2016	04:44:36	453	6.5	13.50	555.5	-3750	-3750			
02/16/2016	04:46:36	470	6.5	13.61	568.5	-3750	-3750			
02/16/2016	04:48:36	454	6.5	13.55	581.5	-3750	-3750			
02/16/2016	04:50:36	469	6.5	13.60	594.5	-3750	-3750			
02/16/2016	04:52:36	494	6.5	13.60	607.6	-3750	-3750			
02/16/2016	04:54:36	494	6.5	13.64	620.6	-3750	-3750			
02/16/2016	04:56:36	463	6.5	13.56	633.6	-3750	-3750			
02/16/2016	04:58:36	486	6.5	13.55	646.6	-3750	-3750			
02/16/2016	05:00:36	549	6.5	13.60	659.6	-3750	-3750			
02/16/2016	05:02:36	592	6.5	13.63	672.6	-3750	-3750			
02/16/2016	05:04:00	649	6.5	13.68	681.7	-3750	-3750	End Cement Slurry		
02/16/2016	05:04:36	655	6.5	13.69	685.6	-3750	-3750			
02/16/2016	05:06:36	669	6.5	13.67	698.6	-3750	-3750			
02/16/2016	05:08:36	748	6.5	13.70	711.6	-3750	-3750			
02/16/2016	05:10:36	196	2.1	13.42	719.9	-3750	-3750			
02/16/2016	05:12:00	490	4.6	12.97	726.2	-3750	-3750	Wash Up To Pit		
02/16/2016	05:12:36	10	0.0	13.02	726.6	-3750	-3750			
02/16/2016	05:14:36	13	0.0	12.79	726.7	-3750	-3750			
02/16/2016	05:15:00	13	0.0	12.79	726.7	-3750	-3750	Drop Top Plug		
02/16/2016	05:16:00	13	0.0	12.97	726.7	-3750	-3750	Start Displacement		
02/16/2016	05:16:36	12	0.0	13.62	726.7	-3750	-3750			
02/16/2016	05:17:00	13	0.0	12.42	726.7	-3750	-3750	312 bbl Water		
02/16/2016	05:18:00	14	0.0	10.92	726.7	-3750	-3750	Good Returns		
02/16/2016	05:18:36	15	0.0	10.43	726.7	-3750	-3750			
02/16/2016	05:20:36	138	4.6	8.78	5.6	-3750	-3750			
02/16/2016	05:22:36	115	4.8	9.73	14.7	-3750	-3750			
02/16/2016	05:24:36	100	4.8	9.89	24.0	-3750	-3750			
02/16/2016	05:26:36	147	4.7	8.38	29.7	-3750	-3750			
02/16/2016	05:28:36	11	0.0	8.36	35.7	-3750	-3750			
02/16/2016	05:30:36	10	0.0	8.36	35.7	-3750	-3750			
02/16/2016	05:32:36	9	0.0	8.36	35.7	-3750	-3750			
02/16/2016	05:34:36	867	4.6	8.36	2.4	-3750	-3750			
02/16/2016	05:36:36	955	6.6	8.36	13.9	-3750	-3750			
02/16/2016	05:38:36	1071	6.8	8.36	29.4	-3750	-3750			
02/16/2016	05:40:36	1403	8.0	8.36	43.5	-3750	-3750			
02/16/2016	05:42:36	1668	8.4	8.36	59.9	-3750	-3750			
02/16/2016	05:44:36	1878	8.3	8.36	76.8	-3750	-3750			
02/16/2016	05:46:36	2073	7.9	8.36	92.5	-3750	-3750			

Well			Field			Job Start		Customer		Job Number	
Horsetail 07E-1836						Feb/16/2016		Whiting		DJT7-00032	
Date	Time 24-hr clock	Treating Pressure PSI	Flow Rate B/M	Density LB/G	Volume BBL	Backside NULL	Well NULL	Message			
02/16/2016	05:50:36	2366	7.6	8.36	124.3	-3750	-3750				
02/16/2016	05:52:36	2674	8.4	8.36	141.0	-3750	-3750				
02/16/2016	05:54:36	2615	8.0	8.36	157.7	-3750	-3750				
02/16/2016	05:56:36	2287	4.6	8.36	168.4	-3750	-3750				
02/16/2016	05:58:36	2070	1.1	8.36	175.4	-3750	-3750				
02/16/2016	06:00:36	2056	1.1	8.36	177.6	-3750	-3750				
02/16/2016	06:02:36	2379	4.6	8.36	183.1	-3750	-3750				
02/16/2016	06:04:36	2501	5.6	8.36	193.9	-3750	-3750				
02/16/2016	06:06:36	2463	5.6	8.36	205.0	-3750	-3750				
02/16/2016	06:08:36	2476	5.6	8.36	216.1	-3750	-3750				
02/16/2016	06:10:36	2444	5.6	8.36	227.3	-3750	-3750				
02/16/2016	06:12:36	2431	5.6	8.36	238.4	-3750	-3750				
02/16/2016	06:14:36	2567	6.5	8.36	250.5	-3750	-3750				
02/16/2016	06:16:36	2550	6.5	8.37	263.4	-3750	-3750				
02/16/2016	06:18:36	2521	6.5	8.37	276.4	-3750	-3750				
02/16/2016	06:20:36	2489	7.1	8.37	289.5	-3750	-3750				
02/16/2016	06:22:36	2325	5.7	8.38	303.6	-3750	-3750				
02/16/2016	06:24:36	2131	4.5	8.38	313.4	-3750	-3750				
02/16/2016	06:26:36	1909	2.1	8.38	320.0	-3750	-3750				
02/16/2016	06:28:00	1938	2.1	8.38	322.9	-3750	-3750	Bump Plug End Displacement			
02/16/2016	06:28:36	1964	2.1	8.38	324.1	-3750	-3750				
02/16/2016	06:30:00	2612	0.0	8.39	326.8	-3750	-3750	Bleed Off Floats Held			
02/16/2016	06:30:36	2675	0.0	8.39	326.8	-3750	-3750				
02/16/2016	06:31:00	2712	0.0	8.39	326.8	-3750	-3750	3 bbl Back			
02/16/2016	06:32:00	2683	0.0	8.39	326.8	-3750	-3750	90 bbl Cement To Surface			
02/16/2016	06:32:36	2692	0.0	8.39	326.8	-3750	-3750				
02/16/2016	06:33:00	2697	0.0	8.39	326.8	-3750	-3750	Rig Down			
02/16/2016	06:34:00	1112	0.0	8.39	326.8	-3750	-3750	End Job			
02/16/2016	06:34:36	7	0.0	8.39	326.8	-3750	-3750				

Post Job Summary

Average Pump Rates, bbl/min					Volume of Fluid Injected, bbl			
Slurry	N2	Mud	Maximum Rate		Total Slurry	Mud	Spacer	N2
Treating Pressure Summary, psi					Breakdown Fluid			
Maximum	Final	Average	Bump Plug to	Breakdown	Type	Volume		Density
	0					bbl		lb/gal
Avg. N2 Percent %	Designed Slurry Volume 0.0 bbl		Displacement bbl	Mix Water Temp 63 degF	Cement Circulated to Surface? <input checked="" type="checkbox"/>		Volume bbl	
Customer or Authorized Representative					Washed Thru Perfs <input type="checkbox"/>		To ft	
Schlumberger Supervisor			Jordan Moreland / Stacy Terry		Circulation Lost <input type="checkbox"/>		Job Completed <input checked="" type="checkbox"/>	
					-		-	