



PROJECT DETAILS: Weld County, CO NAD 83

Geodetic System: US State Plane 1983
Datum: North American Datum 1983
Ellipsoid: GRS 1980
Zone: Colorado Northern Zone
System Datum: Mean Sea Level
Local North: True

Project: Weld County, CO NAD 83
Site: Evans 7-26 Pad
Well: Evans 29N-14A-XR
Wellbore: OH
Design: Plan #1



Azimuths to True North
Magnetic North: 8.48°



Magnetic Field
Strength: 52529.4snT
Dip Angle: 66.93°
Date: 3/9/2016
Model: BGGM2015

SECTION DETAILS

MD	Inc	Azi	TVD	+N/-S	+E/-W	Dleg	TFace	VSect
0.00	0.00	0.00	0.00	0.00	0.00	0.00	0.00	0.00
500.00	0.00	0.00	500.00	0.00	0.00	0.00	0.00	0.00
1253.71	15.07	242.54	1245.04	-45.46	-87.47	2.00	242.54	-36.70
5510.08	15.07	242.54	5354.96	-555.94	-1069.69	0.00	0.00	-448.85
6263.79	0.00	0.00	6100.00	-601.40	-1157.16	2.00	180.00	-485.55
6786.92	0.00	0.00	6623.13	-601.40	-1157.16	0.00	0.00	-485.55
7606.91	90.20	359.90	7144.00	-78.72	-1158.09	11.00	359.90	34.72
19711.20	90.20	359.90	7102.00	12025.48	-1179.68	0.00	0.00	12083.20

DESIGN TARGET DETAILS

Name	TVD	+N/-S	+E/-W	Northing	Easting	Latitude	Longitude	Shape
PBHL	7102.00	12025.48	-1179.68	1391444.33	3208899.56	40.4054910	-104.7498700	Point
- plan hits target center								

WELL DETAILS: Evans 29N-14A-XR

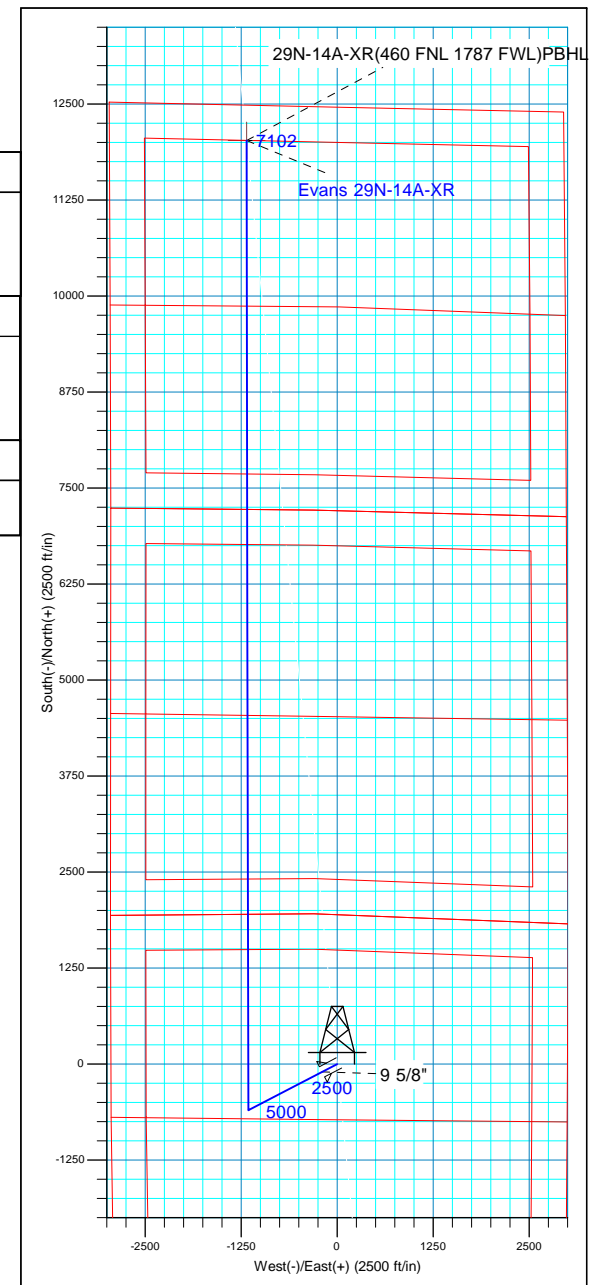
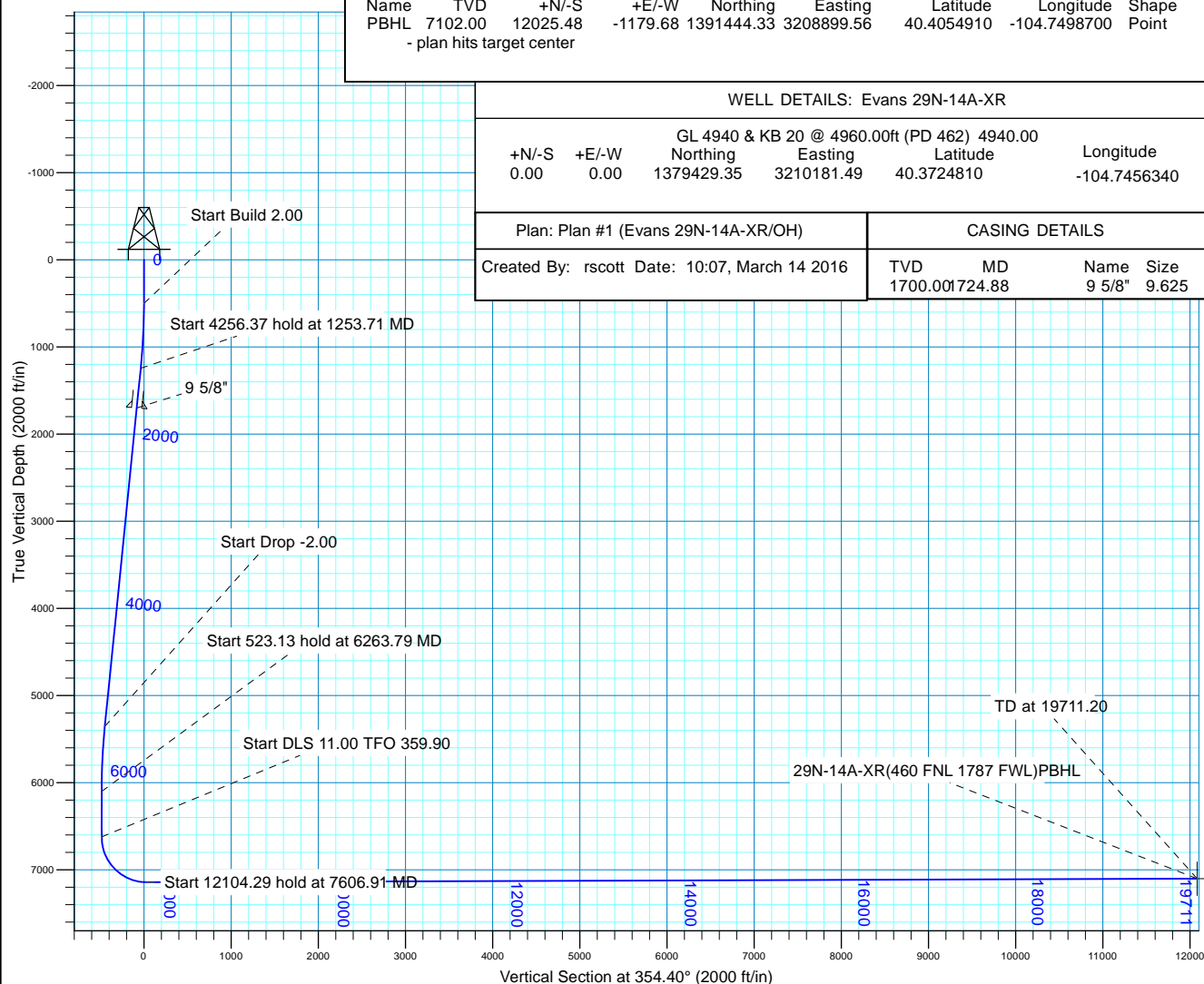
		GL 4940 & KB 20 @ 4960.00ft (PD 462)		4940.00		
+N/-S	+E/-W	Northing	Easting	Latitude	Longitude	
0.00	0.00	1379429.35	3210181.49	40.3724810	-104.7456340	

Plan: Plan #1 (Evans 29N-14A-XR/OH)

CASING DETAILS

Created By: rscott Date: 10:07, March 14 2016

TVD	MD	Name	Size
1700.00	724.88	9 5/8"	9.625





Synergy Resources Corp.

Weld County, CO NAD 83

Evans 7-26 Pad

Evans 29N-14A-XR

OH

Plan: Plan #1

Standard Planning Report

13 March, 2016



Database:	Casper District	Local Co-ordinate Reference:	Well Evans 29N-14A-XR
Company:	Synergy Resources Corp.	TVD Reference:	GL 4940 & KB 20 @ 4960.00ft (PD 462)
Project:	Weld County, CO NAD 83	MD Reference:	GL 4940 & KB 20 @ 4960.00ft (PD 462)
Site:	Evans 7-26 Pad	North Reference:	True
Well:	Evans 29N-14A-XR	Survey Calculation Method:	Minimum Curvature
Wellbore:	OH		
Design:	Plan #1		

Project	Weld County, CO NAD 83		
Map System:	US State Plane 1983	System Datum:	Mean Sea Level
Geo Datum:	North American Datum 1983		
Map Zone:	Colorado Northern Zone		

Site		Evans 7-26 Pad, SECTION 26 T5N R66W			
Site Position:		Northing:	1,379,289.48 usft	Latitude:	40.3720970
From:	Lat/Long	Easting:	3,210,182.68 usft	Longitude:	-104.7456340
Position Uncertainty:	3.28 ft	Slot Radius:	13.200 in	Grid Convergence:	0.49 °

Well	Evans 29N-14A-XR, 1942 FNL 2999 FEL					
Well Position	+N/-S	139.88 ft	Northing:	1,379,429.35 usft	Latitude:	40.3724810
	+E/-W	0.00 ft	Easting:	3,210,181.49 usft	Longitude:	-104.7456340
Position Uncertainty		3.28 ft	Wellhead Elevation:	0.00 ft	Ground Level:	4,940.00 ft

Wellbore	OH				
Magnetics	Model Name	Sample Date	Declination (°)	Dip Angle (°)	Field Strength (nT)
	BGGM2015	3/9/2016	8.48	66.93	52,529

Design	Plan #1			
Audit Notes:				
Version:	Phase:	PLAN	Tie On Depth:	0.00
Vertical Section:	Depth From (TVD) (ft)	+N/-S (ft)	+E/-W (ft)	Direction (°)
	0.00	0.00	0.00	354.40

Plan Sections										
Measured Depth (ft)	Inclination (°)	Azimuth (°)	Vertical Depth (ft)	+N/-S (ft)	+E/-W (ft)	Dogleg Rate (°/100ft)	Build Rate (°/100ft)	Turn Rate (°/100ft)	TFO (°)	Target
0.00	0.00	0.00	0.00	0.00	0.00	0.00	0.00	0.00	0.00	
500.00	0.00	0.00	500.00	0.00	0.00	0.00	0.00	0.00	0.00	
1,253.71	15.07	242.54	1,245.04	-45.46	-87.47	2.00	2.00	0.00	242.54	
5,510.08	15.07	242.54	5,354.96	-555.94	-1,069.69	0.00	0.00	0.00	0.00	
6,263.79	0.00	0.00	6,100.00	-601.40	-1,157.16	2.00	-2.00	0.00	180.00	
6,786.92	0.00	0.00	6,623.13	-601.40	-1,157.16	0.00	0.00	0.00	0.00	
7,606.91	90.20	359.90	7,144.00	-78.72	-1,158.09	11.00	11.00	-0.01	359.90	
19,711.20	90.20	359.90	7,102.00	12,025.48	-1,179.68	0.00	0.00	0.00	0.00	29N-14A-XR(460 FNL

Database:	Casper District	Local Co-ordinate Reference:	Well Evans 29N-14A-XR
Company:	Synergy Resources Corp.	TVD Reference:	GL 4940 & KB 20 @ 4960.00ft (PD 462)
Project:	Weld County, CO NAD 83	MD Reference:	GL 4940 & KB 20 @ 4960.00ft (PD 462)
Site:	Evans 7-26 Pad	North Reference:	True
Well:	Evans 29N-14A-XR	Survey Calculation Method:	Minimum Curvature
Wellbore:	OH		
Design:	Plan #1		

Planned Survey									
Measured Depth (ft)	Inclination (°)	Azimuth (°)	Vertical Depth (ft)	+N/-S (ft)	+E/-W (ft)	Vertical Section (ft)	Dogleg Rate (°/100ft)	Build Rate (°/100ft)	Turn Rate (°/100ft)
0.00	0.00	0.00	0.00	0.00	0.00	0.00	0.00	0.00	0.00
100.00	0.00	0.00	100.00	0.00	0.00	0.00	0.00	0.00	0.00
200.00	0.00	0.00	200.00	0.00	0.00	0.00	0.00	0.00	0.00
300.00	0.00	0.00	300.00	0.00	0.00	0.00	0.00	0.00	0.00
400.00	0.00	0.00	400.00	0.00	0.00	0.00	0.00	0.00	0.00
500.00	0.00	0.00	500.00	0.00	0.00	0.00	0.00	0.00	0.00
Start Build 2.00									
600.00	2.00	242.54	599.98	-0.80	-1.55	-0.65	2.00	2.00	0.00
700.00	4.00	242.54	699.84	-3.22	-6.19	-2.60	2.00	2.00	0.00
800.00	6.00	242.54	799.45	-7.24	-13.93	-5.84	2.00	2.00	0.00
900.00	8.00	242.54	898.70	-12.86	-24.74	-10.38	2.00	2.00	0.00
1,000.00	10.00	242.54	997.47	-20.07	-38.62	-16.20	2.00	2.00	0.00
1,100.00	12.00	242.54	1,095.62	-28.87	-55.55	-23.31	2.00	2.00	0.00
1,200.00	14.00	242.54	1,193.06	-39.24	-75.51	-31.68	2.00	2.00	0.00
1,253.71	15.07	242.54	1,245.04	-45.46	-87.47	-36.70	2.00	2.00	0.00
Start 4256.37 hold at 1253.71 MD									
1,300.00	15.07	242.54	1,289.74	-51.01	-98.15	-41.19	0.00	0.00	0.00
1,400.00	15.07	242.54	1,386.30	-63.00	-121.23	-50.87	0.00	0.00	0.00
1,500.00	15.07	242.54	1,482.86	-75.00	-144.30	-60.55	0.00	0.00	0.00
1,600.00	15.07	242.54	1,579.42	-86.99	-167.38	-70.23	0.00	0.00	0.00
1,700.00	15.07	242.54	1,675.98	-98.98	-190.46	-79.92	0.00	0.00	0.00
1,724.88	15.07	242.54	1,700.00	-101.97	-196.20	-82.33	0.00	0.00	0.00
9 5/8"									
1,800.00	15.07	242.54	1,772.54	-110.98	-213.53	-89.60	0.00	0.00	0.00
1,900.00	15.07	242.54	1,869.10	-122.97	-236.61	-99.28	0.00	0.00	0.00
2,000.00	15.07	242.54	1,965.65	-134.96	-259.69	-108.97	0.00	0.00	0.00
2,100.00	15.07	242.54	2,062.21	-146.96	-282.76	-118.65	0.00	0.00	0.00
2,200.00	15.07	242.54	2,158.77	-158.95	-305.84	-128.33	0.00	0.00	0.00
2,300.00	15.07	242.54	2,255.33	-170.94	-328.92	-138.02	0.00	0.00	0.00
2,400.00	15.07	242.54	2,351.89	-182.94	-351.99	-147.70	0.00	0.00	0.00
2,500.00	15.07	242.54	2,448.45	-194.93	-375.07	-157.38	0.00	0.00	0.00
2,600.00	15.07	242.54	2,545.01	-206.92	-398.15	-167.07	0.00	0.00	0.00
2,700.00	15.07	242.54	2,641.57	-218.92	-421.22	-176.75	0.00	0.00	0.00
2,800.00	15.07	242.54	2,738.13	-230.91	-444.30	-186.43	0.00	0.00	0.00
2,900.00	15.07	242.54	2,834.69	-242.90	-467.38	-196.11	0.00	0.00	0.00
3,000.00	15.07	242.54	2,931.24	-254.90	-490.45	-205.80	0.00	0.00	0.00
3,100.00	15.07	242.54	3,027.80	-266.89	-513.53	-215.48	0.00	0.00	0.00
3,200.00	15.07	242.54	3,124.36	-278.88	-536.60	-225.16	0.00	0.00	0.00
3,300.00	15.07	242.54	3,220.92	-290.88	-559.68	-234.85	0.00	0.00	0.00
3,400.00	15.07	242.54	3,317.48	-302.87	-582.76	-244.53	0.00	0.00	0.00
3,500.00	15.07	242.54	3,414.04	-314.86	-605.83	-254.21	0.00	0.00	0.00
3,600.00	15.07	242.54	3,510.60	-326.86	-628.91	-263.90	0.00	0.00	0.00
3,700.00	15.07	242.54	3,607.16	-338.85	-651.99	-273.58	0.00	0.00	0.00
3,800.00	15.07	242.54	3,703.72	-350.84	-675.06	-283.26	0.00	0.00	0.00
3,900.00	15.07	242.54	3,800.28	-362.84	-698.14	-292.95	0.00	0.00	0.00
4,000.00	15.07	242.54	3,896.83	-374.83	-721.22	-302.63	0.00	0.00	0.00
4,100.00	15.07	242.54	3,993.39	-386.82	-744.29	-312.31	0.00	0.00	0.00
4,200.00	15.07	242.54	4,089.95	-398.82	-767.37	-321.99	0.00	0.00	0.00
4,300.00	15.07	242.54	4,186.51	-410.81	-790.45	-331.68	0.00	0.00	0.00
4,400.00	15.07	242.54	4,283.07	-422.80	-813.52	-341.36	0.00	0.00	0.00
4,500.00	15.07	242.54	4,379.63	-434.80	-836.60	-351.04	0.00	0.00	0.00
4,600.00	15.07	242.54	4,476.19	-446.79	-859.68	-360.73	0.00	0.00	0.00
4,700.00	15.07	242.54	4,572.75	-458.78	-882.75	-370.41	0.00	0.00	0.00

Database:	Casper District	Local Co-ordinate Reference:	Well Evans 29N-14A-XR
Company:	Synergy Resources Corp.	TVD Reference:	GL 4940 & KB 20 @ 4960.00ft (PD 462)
Project:	Weld County, CO NAD 83	MD Reference:	GL 4940 & KB 20 @ 4960.00ft (PD 462)
Site:	Evans 7-26 Pad	North Reference:	True
Well:	Evans 29N-14A-XR	Survey Calculation Method:	Minimum Curvature
Wellbore:	OH		
Design:	Plan #1		

Planned Survey									
Measured Depth (ft)	Inclination (°)	Azimuth (°)	Vertical Depth (ft)	+N/-S (ft)	+E/-W (ft)	Vertical Section (ft)	Dogleg Rate (°/100ft)	Build Rate (°/100ft)	Turn Rate (°/100ft)
4,800.00	15.07	242.54	4,669.31	-470.78	-905.83	-380.09	0.00	0.00	0.00
4,900.00	15.07	242.54	4,765.87	-482.77	-928.90	-389.78	0.00	0.00	0.00
5,000.00	15.07	242.54	4,862.42	-494.76	-951.98	-399.46	0.00	0.00	0.00
5,100.00	15.07	242.54	4,958.98	-506.76	-975.06	-409.14	0.00	0.00	0.00
5,200.00	15.07	242.54	5,055.54	-518.75	-998.13	-418.83	0.00	0.00	0.00
5,300.00	15.07	242.54	5,152.10	-530.74	-1,021.21	-428.51	0.00	0.00	0.00
5,400.00	15.07	242.54	5,248.66	-542.74	-1,044.29	-438.19	0.00	0.00	0.00
5,500.00	15.07	242.54	5,345.22	-554.73	-1,067.36	-447.87	0.00	0.00	0.00
5,510.08	15.07	242.54	5,354.96	-555.94	-1,069.69	-448.85	0.00	0.00	0.00
Start Drop -2.00									
5,600.00	13.28	242.54	5,442.13	-566.09	-1,089.23	-457.05	2.00	-2.00	0.00
5,700.00	11.28	242.54	5,539.84	-575.90	-1,108.09	-464.96	2.00	-2.00	0.00
5,800.00	9.28	242.54	5,638.23	-584.12	-1,123.92	-471.61	2.00	-2.00	0.00
5,900.00	7.28	242.54	5,737.18	-590.76	-1,136.69	-476.97	2.00	-2.00	0.00
6,000.00	5.28	242.54	5,836.58	-595.80	-1,146.39	-481.04	2.00	-2.00	0.00
6,100.00	3.28	242.54	5,936.30	-599.24	-1,153.01	-483.81	2.00	-2.00	0.00
6,200.00	1.28	242.54	6,036.21	-601.07	-1,156.53	-485.29	2.00	-2.00	0.00
6,263.79	0.00	0.00	6,100.00	-601.40	-1,157.16	-485.55	2.00	-2.00	0.00
Start 523.13 hold at 6263.79 MD									
6,300.00	0.00	0.00	6,136.21	-601.40	-1,157.16	-485.55	0.00	0.00	0.00
6,400.00	0.00	0.00	6,236.21	-601.40	-1,157.16	-485.55	0.00	0.00	0.00
6,500.00	0.00	0.00	6,336.21	-601.40	-1,157.16	-485.55	0.00	0.00	0.00
6,600.00	0.00	0.00	6,436.21	-601.40	-1,157.16	-485.55	0.00	0.00	0.00
6,700.00	0.00	0.00	6,536.21	-601.40	-1,157.16	-485.55	0.00	0.00	0.00
6,786.92	0.00	0.00	6,623.13	-601.40	-1,157.16	-485.55	0.00	0.00	0.00
Start DLS 11.00 TFO 359.90									
6,800.00	1.44	359.90	6,636.21	-601.24	-1,157.16	-485.39	11.00	11.00	0.00
6,900.00	12.44	359.90	6,735.32	-589.17	-1,157.18	-473.38	11.00	11.00	0.00
7,000.00	23.44	359.90	6,830.31	-558.42	-1,157.24	-442.77	11.00	11.00	0.00
7,100.00	34.44	359.90	6,917.69	-510.11	-1,157.32	-394.68	11.00	11.00	0.00
7,200.00	45.44	359.90	6,994.25	-446.01	-1,157.44	-330.88	11.00	11.00	0.00
7,300.00	56.44	359.90	7,057.17	-368.48	-1,157.58	-253.71	11.00	11.00	0.00
7,400.00	67.44	359.90	7,104.14	-280.37	-1,157.73	-166.01	11.00	11.00	0.00
7,500.00	78.44	359.90	7,133.43	-184.92	-1,157.90	-70.99	11.00	11.00	0.00
7,600.00	89.44	359.90	7,143.98	-85.63	-1,158.08	27.84	11.00	11.00	0.00
7,606.91	90.20	359.90	7,144.00	-78.72	-1,158.09	34.72	11.00	11.00	0.00
Start 12104.29 hold at 7606.91 MD									
7,700.00	90.20	359.90	7,143.67	14.36	-1,158.26	127.38	0.00	0.00	0.00
7,800.00	90.20	359.90	7,143.33	114.36	-1,158.44	226.92	0.00	0.00	0.00
7,900.00	90.20	359.90	7,142.98	214.36	-1,158.61	326.45	0.00	0.00	0.00
8,000.00	90.20	359.90	7,142.63	314.36	-1,158.79	425.99	0.00	0.00	0.00
8,100.00	90.20	359.90	7,142.29	414.36	-1,158.97	525.53	0.00	0.00	0.00
8,200.00	90.20	359.90	7,141.94	514.36	-1,159.15	625.07	0.00	0.00	0.00
8,300.00	90.20	359.90	7,141.59	614.36	-1,159.33	724.61	0.00	0.00	0.00
8,400.00	90.20	359.90	7,141.25	714.36	-1,159.51	824.15	0.00	0.00	0.00
8,500.00	90.20	359.90	7,140.90	814.36	-1,159.68	923.69	0.00	0.00	0.00
8,600.00	90.20	359.90	7,140.55	914.36	-1,159.86	1,023.23	0.00	0.00	0.00
8,700.00	90.20	359.90	7,140.21	1,014.36	-1,160.04	1,122.77	0.00	0.00	0.00
8,800.00	90.20	359.90	7,139.86	1,114.36	-1,160.22	1,222.30	0.00	0.00	0.00
8,900.00	90.20	359.90	7,139.51	1,214.36	-1,160.40	1,321.84	0.00	0.00	0.00
9,000.00	90.20	359.90	7,139.16	1,314.35	-1,160.58	1,421.38	0.00	0.00	0.00
9,100.00	90.20	359.90	7,138.82	1,414.35	-1,160.75	1,520.92	0.00	0.00	0.00
9,200.00	90.20	359.90	7,138.47	1,514.35	-1,160.93	1,620.46	0.00	0.00	0.00
9,300.00	90.20	359.90	7,138.12	1,614.35	-1,161.11	1,720.00	0.00	0.00	0.00

Database:	Casper District	Local Co-ordinate Reference:	Well Evans 29N-14A-XR
Company:	Synergy Resources Corp.	TVD Reference:	GL 4940 & KB 20 @ 4960.00ft (PD 462)
Project:	Weld County, CO NAD 83	MD Reference:	GL 4940 & KB 20 @ 4960.00ft (PD 462)
Site:	Evans 7-26 Pad	North Reference:	True
Well:	Evans 29N-14A-XR	Survey Calculation Method:	Minimum Curvature
Wellbore:	OH		
Design:	Plan #1		

Planned Survey									
Measured Depth (ft)	Inclination (°)	Azimuth (°)	Vertical Depth (ft)	+N/-S (ft)	+E/-W (ft)	Vertical Section (ft)	Dogleg Rate (°/100ft)	Build Rate (°/100ft)	Turn Rate (°/100ft)
9,400.00	90.20	359.90	7,137.78	1,714.35	-1,161.29	1,819.54	0.00	0.00	0.00
9,500.00	90.20	359.90	7,137.43	1,814.35	-1,161.47	1,919.08	0.00	0.00	0.00
9,600.00	90.20	359.90	7,137.08	1,914.35	-1,161.65	2,018.62	0.00	0.00	0.00
9,700.00	90.20	359.90	7,136.74	2,014.35	-1,161.82	2,118.15	0.00	0.00	0.00
9,800.00	90.20	359.90	7,136.39	2,114.35	-1,162.00	2,217.69	0.00	0.00	0.00
9,900.00	90.20	359.90	7,136.04	2,214.35	-1,162.18	2,317.23	0.00	0.00	0.00
10,000.00	90.20	359.90	7,135.69	2,314.35	-1,162.36	2,416.77	0.00	0.00	0.00
10,100.00	90.20	359.90	7,135.35	2,414.35	-1,162.54	2,516.31	0.00	0.00	0.00
10,200.00	90.20	359.90	7,135.00	2,514.35	-1,162.72	2,615.85	0.00	0.00	0.00
10,300.00	90.20	359.90	7,134.65	2,614.34	-1,162.89	2,715.39	0.00	0.00	0.00
10,400.00	90.20	359.90	7,134.31	2,714.34	-1,163.07	2,814.93	0.00	0.00	0.00
10,500.00	90.20	359.90	7,133.96	2,814.34	-1,163.25	2,914.47	0.00	0.00	0.00
10,600.00	90.20	359.90	7,133.61	2,914.34	-1,163.43	3,014.01	0.00	0.00	0.00
10,700.00	90.20	359.90	7,133.27	3,014.34	-1,163.61	3,113.54	0.00	0.00	0.00
10,800.00	90.20	359.90	7,132.92	3,114.34	-1,163.79	3,213.08	0.00	0.00	0.00
10,900.00	90.20	359.90	7,132.57	3,214.34	-1,163.96	3,312.62	0.00	0.00	0.00
11,000.00	90.20	359.90	7,132.22	3,314.34	-1,164.14	3,412.16	0.00	0.00	0.00
11,100.00	90.20	359.90	7,131.88	3,414.34	-1,164.32	3,511.70	0.00	0.00	0.00
11,200.00	90.20	359.90	7,131.53	3,514.34	-1,164.50	3,611.24	0.00	0.00	0.00
11,300.00	90.20	359.90	7,131.18	3,614.34	-1,164.68	3,710.78	0.00	0.00	0.00
11,400.00	90.20	359.90	7,130.84	3,714.34	-1,164.86	3,810.32	0.00	0.00	0.00
11,500.00	90.20	359.90	7,130.49	3,814.34	-1,165.03	3,909.86	0.00	0.00	0.00
11,600.00	90.20	359.90	7,130.14	3,914.34	-1,165.21	4,009.39	0.00	0.00	0.00
11,700.00	90.20	359.90	7,129.80	4,014.33	-1,165.39	4,108.93	0.00	0.00	0.00
11,800.00	90.20	359.90	7,129.45	4,114.33	-1,165.57	4,208.47	0.00	0.00	0.00
11,900.00	90.20	359.90	7,129.10	4,214.33	-1,165.75	4,308.01	0.00	0.00	0.00
12,000.00	90.20	359.90	7,128.76	4,314.33	-1,165.93	4,407.55	0.00	0.00	0.00
12,100.00	90.20	359.90	7,128.41	4,414.33	-1,166.10	4,507.09	0.00	0.00	0.00
12,200.00	90.20	359.90	7,128.06	4,514.33	-1,166.28	4,606.63	0.00	0.00	0.00
12,300.00	90.20	359.90	7,127.71	4,614.33	-1,166.46	4,706.17	0.00	0.00	0.00
12,400.00	90.20	359.90	7,127.37	4,714.33	-1,166.64	4,805.71	0.00	0.00	0.00
12,500.00	90.20	359.90	7,127.02	4,814.33	-1,166.82	4,905.25	0.00	0.00	0.00
12,600.00	90.20	359.90	7,126.67	4,914.33	-1,167.00	5,004.78	0.00	0.00	0.00
12,700.00	90.20	359.90	7,126.33	5,014.33	-1,167.17	5,104.32	0.00	0.00	0.00
12,800.00	90.20	359.90	7,125.98	5,114.33	-1,167.35	5,203.86	0.00	0.00	0.00
12,900.00	90.20	359.90	7,125.63	5,214.33	-1,167.53	5,303.40	0.00	0.00	0.00
13,000.00	90.20	359.90	7,125.29	5,314.32	-1,167.71	5,402.94	0.00	0.00	0.00
13,100.00	90.20	359.90	7,124.94	5,414.32	-1,167.89	5,502.48	0.00	0.00	0.00
13,200.00	90.20	359.90	7,124.59	5,514.32	-1,168.07	5,602.02	0.00	0.00	0.00
13,300.00	90.20	359.90	7,124.24	5,614.32	-1,168.24	5,701.56	0.00	0.00	0.00
13,400.00	90.20	359.90	7,123.90	5,714.32	-1,168.42	5,801.10	0.00	0.00	0.00
13,500.00	90.20	359.90	7,123.55	5,814.32	-1,168.60	5,900.63	0.00	0.00	0.00
13,600.00	90.20	359.90	7,123.20	5,914.32	-1,168.78	6,000.17	0.00	0.00	0.00
13,700.00	90.20	359.90	7,122.86	6,014.32	-1,168.96	6,099.71	0.00	0.00	0.00
13,800.00	90.20	359.90	7,122.51	6,114.32	-1,169.14	6,199.25	0.00	0.00	0.00
13,900.00	90.20	359.90	7,122.16	6,214.32	-1,169.31	6,298.79	0.00	0.00	0.00
14,000.00	90.20	359.90	7,121.82	6,314.32	-1,169.49	6,398.33	0.00	0.00	0.00
14,100.00	90.20	359.90	7,121.47	6,414.32	-1,169.67	6,497.87	0.00	0.00	0.00
14,200.00	90.20	359.90	7,121.12	6,514.32	-1,169.85	6,597.41	0.00	0.00	0.00
14,300.00	90.20	359.90	7,120.78	6,614.31	-1,170.03	6,696.95	0.00	0.00	0.00
14,400.00	90.20	359.90	7,120.43	6,714.31	-1,170.21	6,796.49	0.00	0.00	0.00
14,500.00	90.20	359.90	7,120.08	6,814.31	-1,170.38	6,896.02	0.00	0.00	0.00
14,600.00	90.20	359.90	7,119.73	6,914.31	-1,170.56	6,995.56	0.00	0.00	0.00
14,700.00	90.20	359.90	7,119.39	7,014.31	-1,170.74	7,095.10	0.00	0.00	0.00

Database:	Casper District	Local Co-ordinate Reference:	Well Evans 29N-14A-XR
Company:	Synergy Resources Corp.	TVD Reference:	GL 4940 & KB 20 @ 4960.00ft (PD 462)
Project:	Weld County, CO NAD 83	MD Reference:	GL 4940 & KB 20 @ 4960.00ft (PD 462)
Site:	Evans 7-26 Pad	North Reference:	True
Well:	Evans 29N-14A-XR	Survey Calculation Method:	Minimum Curvature
Wellbore:	OH		
Design:	Plan #1		

Planned Survey									
Measured Depth (ft)	Inclination (°)	Azimuth (°)	Vertical Depth (ft)	+N/-S (ft)	+E/-W (ft)	Vertical Section (ft)	Dogleg Rate (°/100ft)	Build Rate (°/100ft)	Turn Rate (°/100ft)
14,800.00	90.20	359.90	7,119.04	7,114.31	-1,170.92	7,194.64	0.00	0.00	0.00
14,900.00	90.20	359.90	7,118.69	7,214.31	-1,171.10	7,294.18	0.00	0.00	0.00
15,000.00	90.20	359.90	7,118.35	7,314.31	-1,171.28	7,393.72	0.00	0.00	0.00
15,100.00	90.20	359.90	7,118.00	7,414.31	-1,171.45	7,493.26	0.00	0.00	0.00
15,200.00	90.20	359.90	7,117.65	7,514.31	-1,171.63	7,592.80	0.00	0.00	0.00
15,300.00	90.20	359.90	7,117.31	7,614.31	-1,171.81	7,692.34	0.00	0.00	0.00
15,400.00	90.20	359.90	7,116.96	7,714.31	-1,171.99	7,791.87	0.00	0.00	0.00
15,500.00	90.20	359.90	7,116.61	7,814.31	-1,172.17	7,891.41	0.00	0.00	0.00
15,600.00	90.20	359.90	7,116.26	7,914.30	-1,172.35	7,990.95	0.00	0.00	0.00
15,700.00	90.20	359.90	7,115.92	8,014.30	-1,172.52	8,090.49	0.00	0.00	0.00
15,800.00	90.20	359.90	7,115.57	8,114.30	-1,172.70	8,190.03	0.00	0.00	0.00
15,900.00	90.20	359.90	7,115.22	8,214.30	-1,172.88	8,289.57	0.00	0.00	0.00
16,000.00	90.20	359.90	7,114.88	8,314.30	-1,173.06	8,389.11	0.00	0.00	0.00
16,100.00	90.20	359.90	7,114.53	8,414.30	-1,173.24	8,488.65	0.00	0.00	0.00
16,200.00	90.20	359.90	7,114.18	8,514.30	-1,173.42	8,588.19	0.00	0.00	0.00
16,300.00	90.20	359.90	7,113.84	8,614.30	-1,173.59	8,687.72	0.00	0.00	0.00
16,400.00	90.20	359.90	7,113.49	8,714.30	-1,173.77	8,787.26	0.00	0.00	0.00
16,500.00	90.20	359.90	7,113.14	8,814.30	-1,173.95	8,886.80	0.00	0.00	0.00
16,600.00	90.20	359.90	7,112.79	8,914.30	-1,174.13	8,986.34	0.00	0.00	0.00
16,700.00	90.20	359.90	7,112.45	9,014.30	-1,174.31	9,085.88	0.00	0.00	0.00
16,800.00	90.20	359.90	7,112.10	9,114.30	-1,174.49	9,185.42	0.00	0.00	0.00
16,900.00	90.20	359.90	7,111.75	9,214.29	-1,174.66	9,284.96	0.00	0.00	0.00
17,000.00	90.20	359.90	7,111.41	9,314.29	-1,174.84	9,384.50	0.00	0.00	0.00
17,100.00	90.20	359.90	7,111.06	9,414.29	-1,175.02	9,484.04	0.00	0.00	0.00
17,200.00	90.20	359.90	7,110.71	9,514.29	-1,175.20	9,583.58	0.00	0.00	0.00
17,300.00	90.20	359.90	7,110.37	9,614.29	-1,175.38	9,683.11	0.00	0.00	0.00
17,400.00	90.20	359.90	7,110.02	9,714.29	-1,175.56	9,782.65	0.00	0.00	0.00
17,500.00	90.20	359.90	7,109.67	9,814.29	-1,175.73	9,882.19	0.00	0.00	0.00
17,600.00	90.20	359.90	7,109.33	9,914.29	-1,175.91	9,981.73	0.00	0.00	0.00
17,700.00	90.20	359.90	7,108.98	10,014.29	-1,176.09	10,081.27	0.00	0.00	0.00
17,800.00	90.20	359.90	7,108.63	10,114.29	-1,176.27	10,180.81	0.00	0.00	0.00
17,900.00	90.20	359.90	7,108.28	10,214.29	-1,176.45	10,280.35	0.00	0.00	0.00
18,000.00	90.20	359.90	7,107.94	10,314.29	-1,176.63	10,379.89	0.00	0.00	0.00
18,100.00	90.20	359.90	7,107.59	10,414.29	-1,176.80	10,479.43	0.00	0.00	0.00
18,200.00	90.20	359.90	7,107.24	10,514.29	-1,176.98	10,578.96	0.00	0.00	0.00
18,300.00	90.20	359.90	7,106.90	10,614.28	-1,177.16	10,678.50	0.00	0.00	0.00
18,400.00	90.20	359.90	7,106.55	10,714.28	-1,177.34	10,778.04	0.00	0.00	0.00
18,500.00	90.20	359.90	7,106.20	10,814.28	-1,177.52	10,877.58	0.00	0.00	0.00
18,600.00	90.20	359.90	7,105.86	10,914.28	-1,177.70	10,977.12	0.00	0.00	0.00
18,700.00	90.20	359.90	7,105.51	11,014.28	-1,177.87	11,076.66	0.00	0.00	0.00
18,800.00	90.20	359.90	7,105.16	11,114.28	-1,178.05	11,176.20	0.00	0.00	0.00
18,900.00	90.20	359.90	7,104.81	11,214.28	-1,178.23	11,275.74	0.00	0.00	0.00
19,000.00	90.20	359.90	7,104.47	11,314.28	-1,178.41	11,375.28	0.00	0.00	0.00
19,100.00	90.20	359.90	7,104.12	11,414.28	-1,178.59	11,474.82	0.00	0.00	0.00
19,200.00	90.20	359.90	7,103.77	11,514.28	-1,178.77	11,574.35	0.00	0.00	0.00
19,300.00	90.20	359.90	7,103.43	11,614.28	-1,178.94	11,673.89	0.00	0.00	0.00
19,400.00	90.20	359.90	7,103.08	11,714.28	-1,179.12	11,773.43	0.00	0.00	0.00
19,500.00	90.20	359.90	7,102.73	11,814.28	-1,179.30	11,872.97	0.00	0.00	0.00
19,600.00	90.20	359.90	7,102.39	11,914.27	-1,179.48	11,972.51	0.00	0.00	0.00
19,700.00	90.20	359.90	7,102.04	12,014.27	-1,179.66	12,072.05	0.00	0.00	0.00
19,711.20	90.20	359.90	7,102.00	12,025.48	-1,179.68	12,083.20	0.00	0.00	0.00
TD at 19711.20 - 29N-14A-XR(460 FNL 1787 FWL)PBHL									

Database:	Casper District	Local Co-ordinate Reference:	Well Evans 29N-14A-XR
Company:	Synergy Resources Corp.	TVD Reference:	GL 4940 & KB 20 @ 4960.00ft (PD 462)
Project:	Weld County, CO NAD 83	MD Reference:	GL 4940 & KB 20 @ 4960.00ft (PD 462)
Site:	Evans 7-26 Pad	North Reference:	True
Well:	Evans 29N-14A-XR	Survey Calculation Method:	Minimum Curvature
Wellbore:	OH		
Design:	Plan #1		

Design Targets									
Target Name	Dip Angle (°)	Dip Dir. (°)	TVD (ft)	+N/-S (ft)	+E/-W (ft)	Northing (usft)	Easting (usft)	Latitude	Longitude
29N-14A-XR(460 FNL 1' - hit/miss target - Shape - plan hits target center - Point	0.00	0.00	7,102.00	12,025.48	-1,179.68	1,391,444.33	3,208,899.56	40.4054910	-104.7498700

Casing Points					
Measured Depth (ft)	Vertical Depth (ft)	Name	Casing Diameter (in)	Hole Diameter (in)	
1,724.88	1,700.00	9 5/8"	9.625	13.500	

Plan Annotations				
Measured Depth (ft)	Vertical Depth (ft)	Local Coordinates		Comment
		+N/-S (ft)	+E/-W (ft)	
500.00	500.00	0.00	0.00	Start Build 2.00
1,253.71	1,245.04	-45.46	-87.47	Start 4256.37 hold at 1253.71 MD
5,510.08	5,354.96	-555.94	-1,069.69	Start Drop -2.00
6,263.79	6,100.00	-601.40	-1,157.16	Start 523.13 hold at 6263.79 MD
6,786.92	6,623.13	-601.40	-1,157.16	Start DLS 11.00 TFO 359.90
7,606.91	7,144.00	-78.72	-1,158.09	Start 12104.29 hold at 7606.91 MD
19,711.20	7,102.00	12,025.48	-1,179.68	TD at 19711.20