



# CEMENT BOND LOG GAMMA RAY / CCL

Company	GREAT WESTERN OIL & GAS, LLC.		Country	U.S.A.			
Well	GREAT WESTERN 26-41						
Field	WATTENBERG						
County	WELD						
State	COLORADO						
Company GREAT WESTERN OIL & GAS, LLC.			Country U.S.A.				
Well GREAT WESTERN 26-41							
Field WATTENBERG							
County WELD							
State COLORADO			Country U.S.A.				
Location:			API # : 05-123-24282				
SEC 26 TWP 6N RGE 67W			Other Services				
190' FNL & 660' FEL NE NE			NONE				
Permanent Datum	G.L.	Elevation	4761'				
Log Measured From	K.B.		K.B. 4777'				
Drilling Measured From	K.B.		D.F. 4776'				
			G.L. 4761'				
Date	1-20-2016						
Run Number	ONE						
Depth Driller	7286'						
Depth Logger	1615'						
Bottom Logged Interval	1600'						
Top Log Interval	SURFACE						
Open Hole Size	N/A						
Type Fluid	WATER						
Density / Viscosity	N/A						
Max. Recorded Temp.	N/A						
Estimated Cement Top							
Time Well Ready	7:00AM						
Time Logger on Bottom	7:45AM						
Equipment Number	41						
location	JOHNSTOWN						
Recorded By	WILLIAMS						
Witnessed By	MR. LINDSEY						
Borehole Record			Tubing Record				
Run Number	Bit	From	To	Size	Weight	From	To
Casing Record	Size		Wgt/Ft		Top		Bottom
Surface String							
Prot. String							
Production String							
Liner							

<<< Fold Here >>>

All interpretations are opinions based on inferences from electrical or other measurements and we cannot and do not guarantee the accuracy or correctness of any interpretation, and we shall not, except in the case of gross or willful negligence on our part, be liable or responsible for any loss, costs, damages, or expenses incurred or sustained by anyone resulting from any interpretation made by any of our officers, agents or employees. These interpretations are also subject to our general terms and conditions set out in our current Price Schedule.

## Comments

NOTE: THIS LOG WAS NOT CORRELATED TO ANY OTHER LOG

MAIN PASS: 5" = 100'  
CSG PSI: 800

## Calibration Report

Database File: 1202016\_greatwestern26-41.db  
Dataset Pathname: mainpress/pass1  
Dataset Creation: Wed Jan 20 09:53:39 2016 by Log Std Casedhole 10081

Serial Number:  
Tool Model:  
Performed:

080221  
Probe  
Sun Jun 13 13:33:21 1993

Calibrator Value:

1.0

GAPI

Background Reading:

0.0

cps

Calibrator Reading:

1.0

cps

Sensitivity:

1.0000

GAPI/cps

Segmented Cement Bond Log Calibration Report

Serial Number:  
Tool Model:

120303  
Probe

Calibration Casing Diameter:

4.500

in

Calibration Depth:

1395.683

ft

Master Calibration, performed Wed Jan 20 09:50:53 2016:

	Raw (v)		Calibrated (mv)		Results	
	Zero	Cal	Zero	Cal	Gain	Offset
3'	0.002	0.303	2.000	81.196	262.896	1.429
CAL	0.001	0.710				
5'	0.004	0.327	2.000	81.196	245.358	1.021
SUM						
S1	0.004	0.413	0.000	100.000	244.421	-1.032
S2	0.004	0.288	0.000	100.000	351.830	-1.490
S3	0.004	0.299	0.000	100.000	339.663	-1.455
S4	0.005	0.326	0.000	100.000	311.436	-1.437
S5	0.003	0.328	0.000	100.000	308.225	-1.001
S6	0.003	0.328	0.000	100.000	307.854	-0.868
S7	0.002	0.333	0.000	100.000	302.076	-0.490
S8	0.002	0.355	0.000	100.000	283.401	-0.581

Internal Reference Calibration, performed Wed Dec 31 17:00:00 1969:

	Raw (v)		Calibrated (v)		Results	
	Zero	Cal	Zero	Cal	Gain	Offset
CAL	0.000	0.000	0.001	0.710	1.000	0.000

Air Zero Calibration, performed Wed Jan 20 09:28:11 2016:

	Raw (v)		Calibrated (v)		Results	
	Zero		Zero		Offset	
3'	0.000		0.000		0.000	
5'	0.000		0.000		0.000	
SUM						
S1	0.000		0.000		0.000	
S2	0.000		0.000		0.000	
S3	0.000		0.000		0.000	
S4	0.000		0.000		0.000	
S5	0.000		0.000		0.000	
S6	0.000		0.000		0.000	
S7	0.000		0.000		0.000	

S8

0.000

0.000

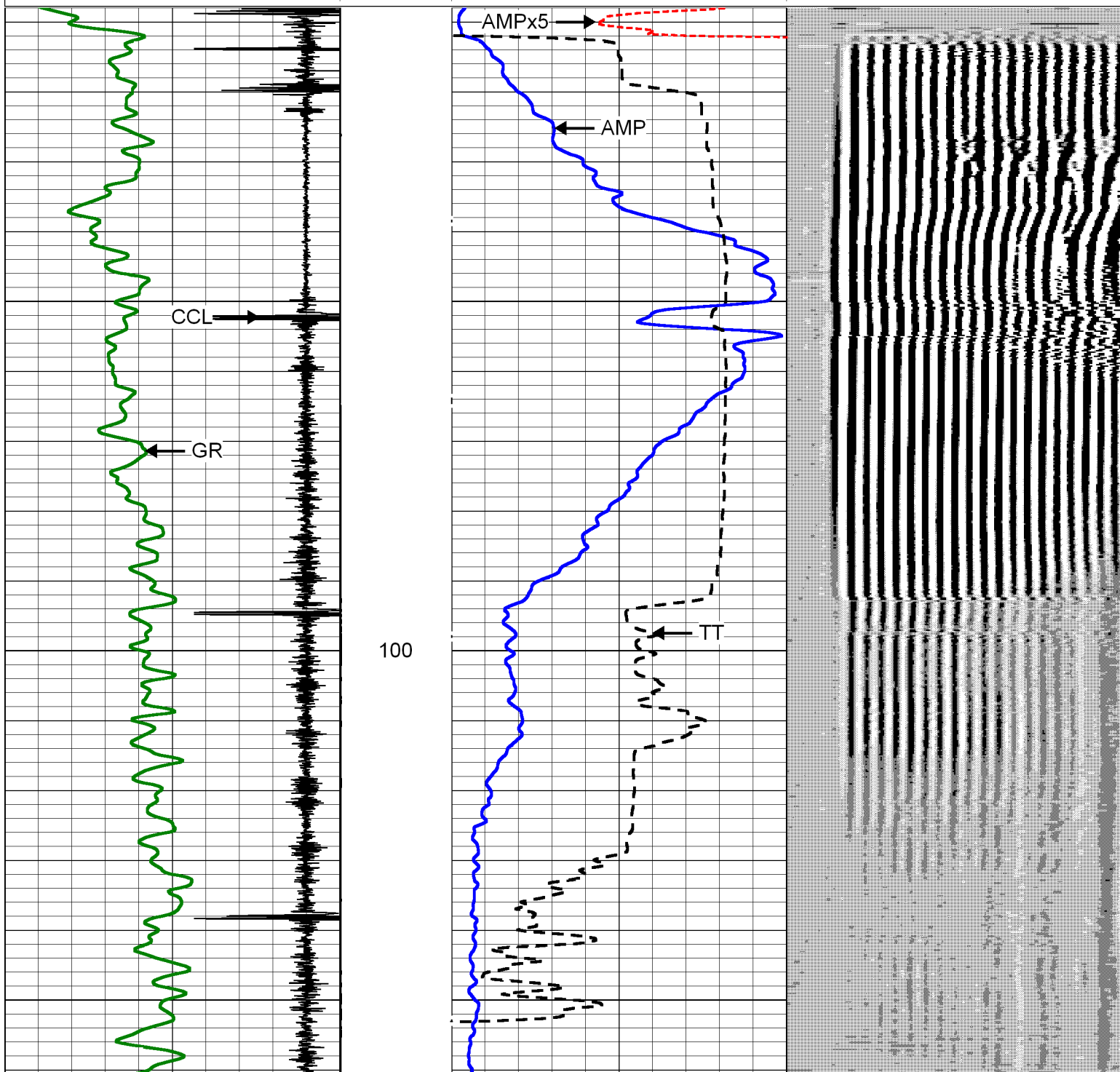
0.000

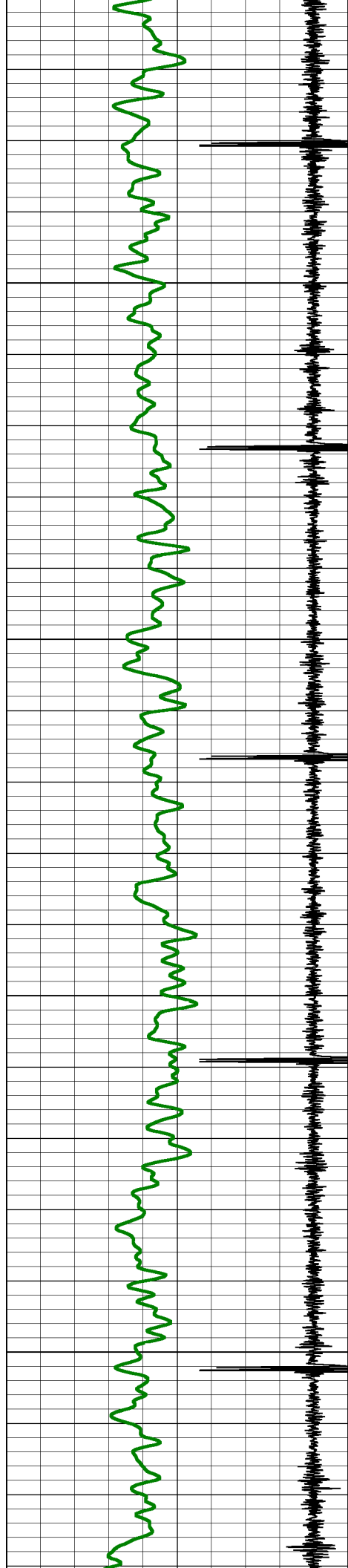


# MAIN PASS 800PSI

Database File: 1202016\_greatwestern26-41.db  
Dataset Pathname: mainpress/merge2  
Presentation Format: rmws\_dsc  
Dataset Creation: Wed Jan 20 10:50:58 2016 by Calc Std Casedhole 10081  
Charted by: Depth in Feet scaled 1:240

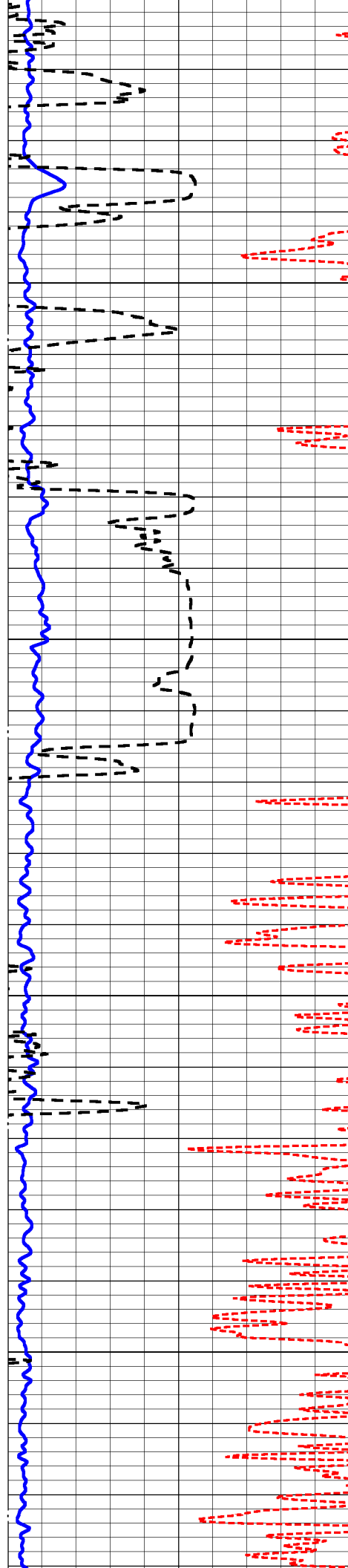
-27	CCL	3	LTEN	0	AMPx5 (mV)	5	200	VDL	1200
0	GR (GAPI)	150	(lb)	0	AMP (mV)	100			
			0	4000	380	TT (usec)	180		



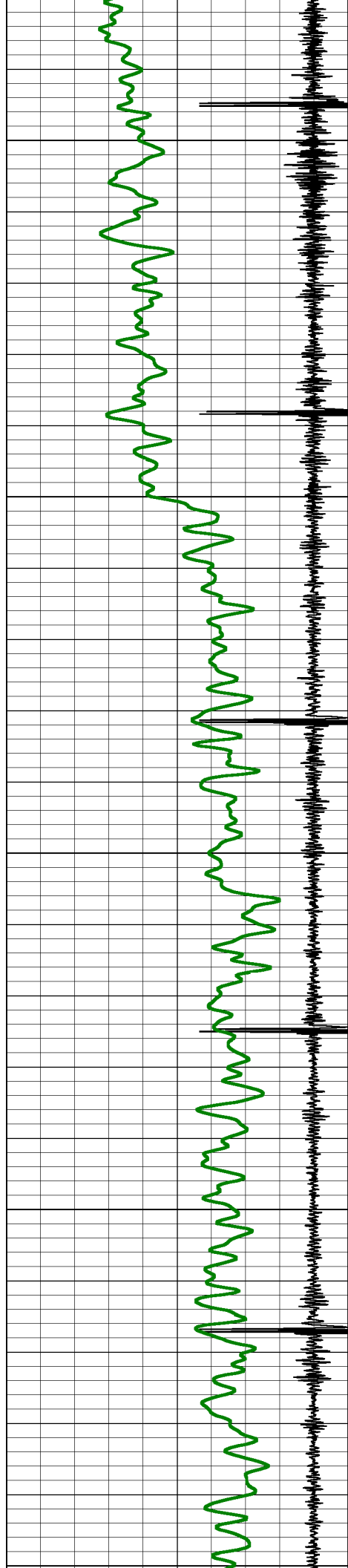


200

300



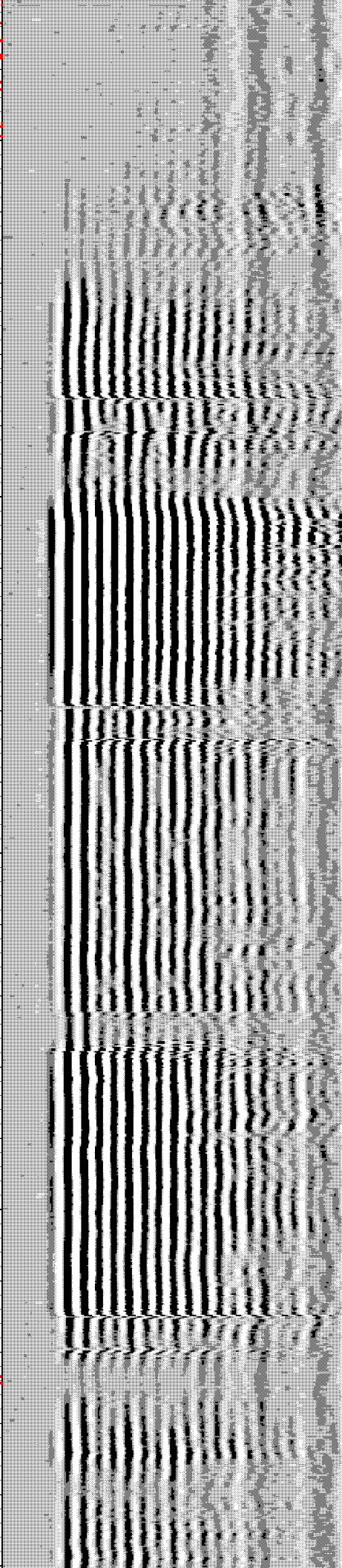
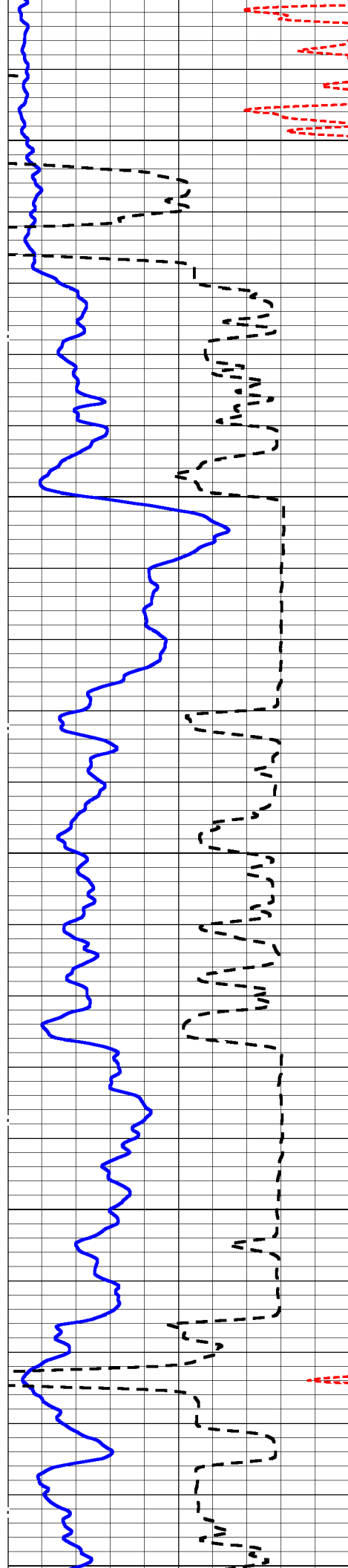


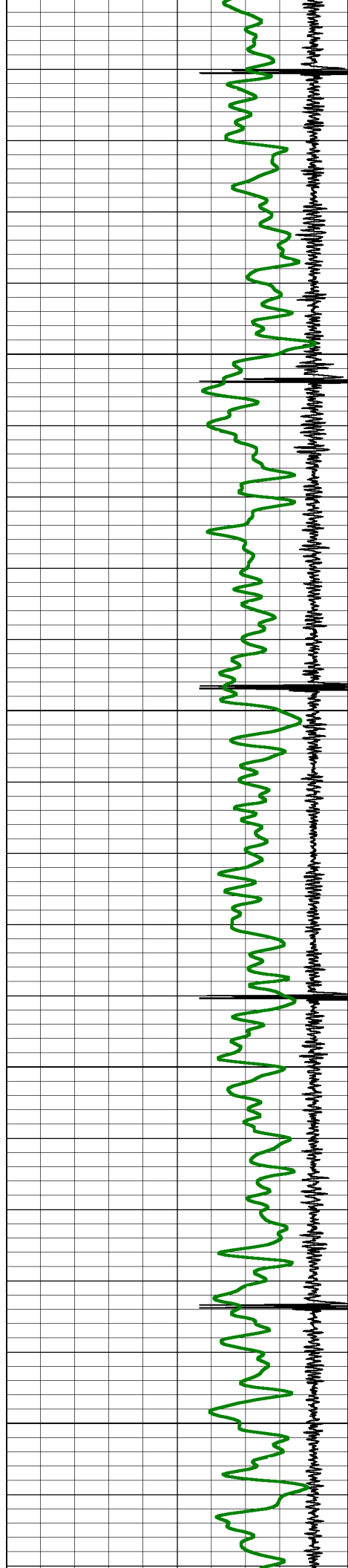


400

500

600

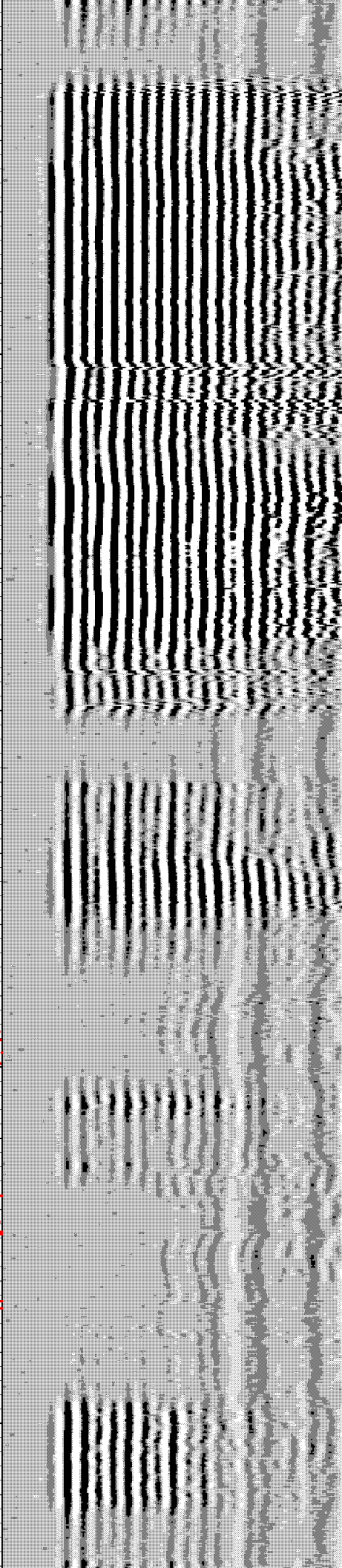
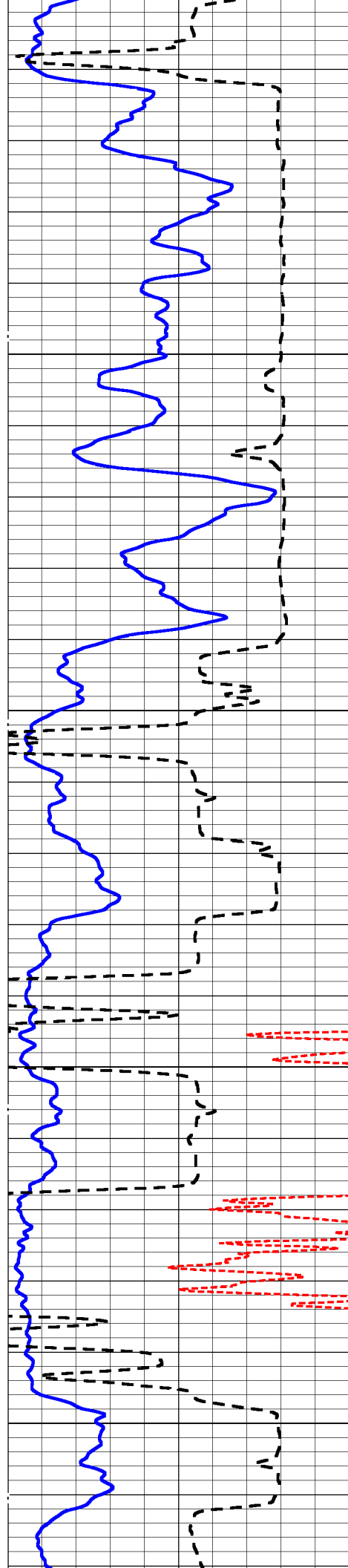


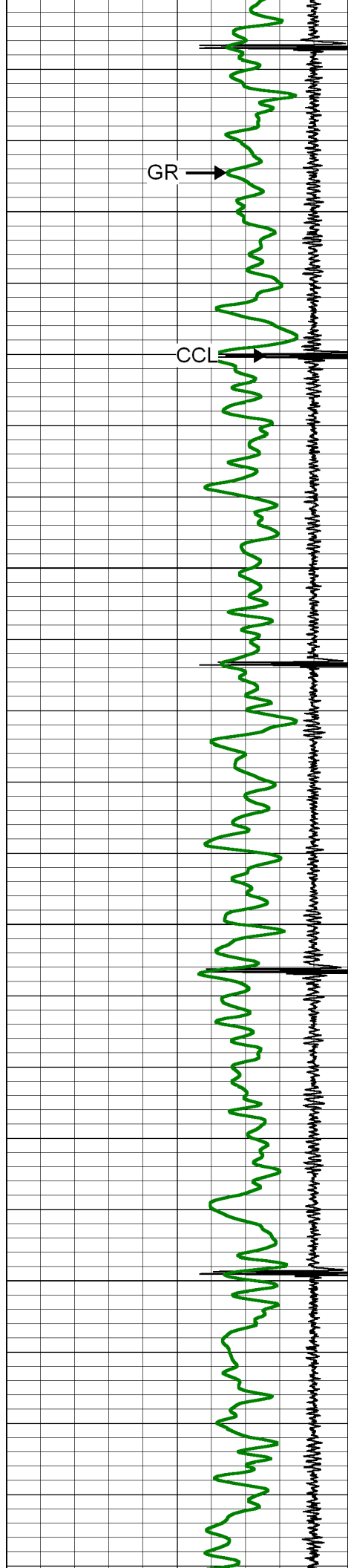


600

700

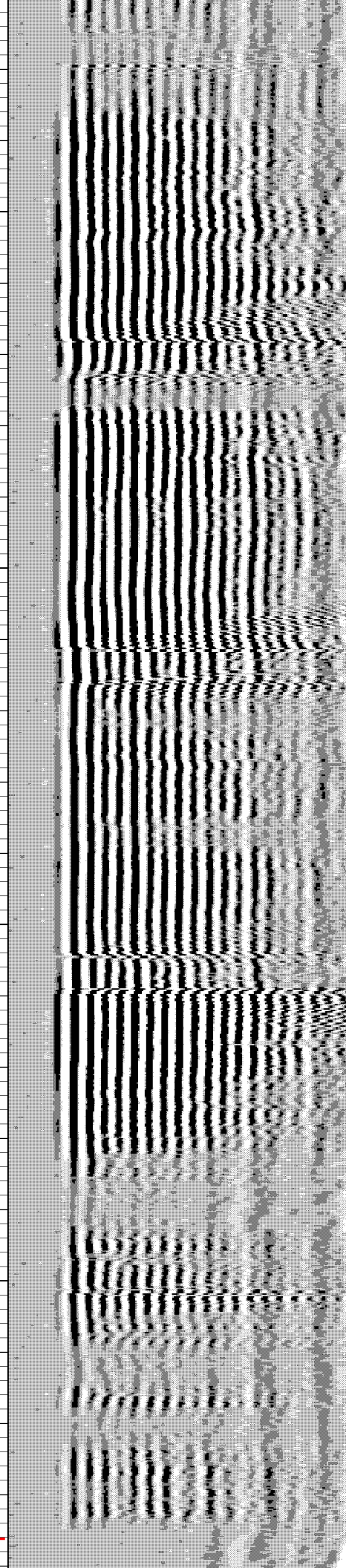
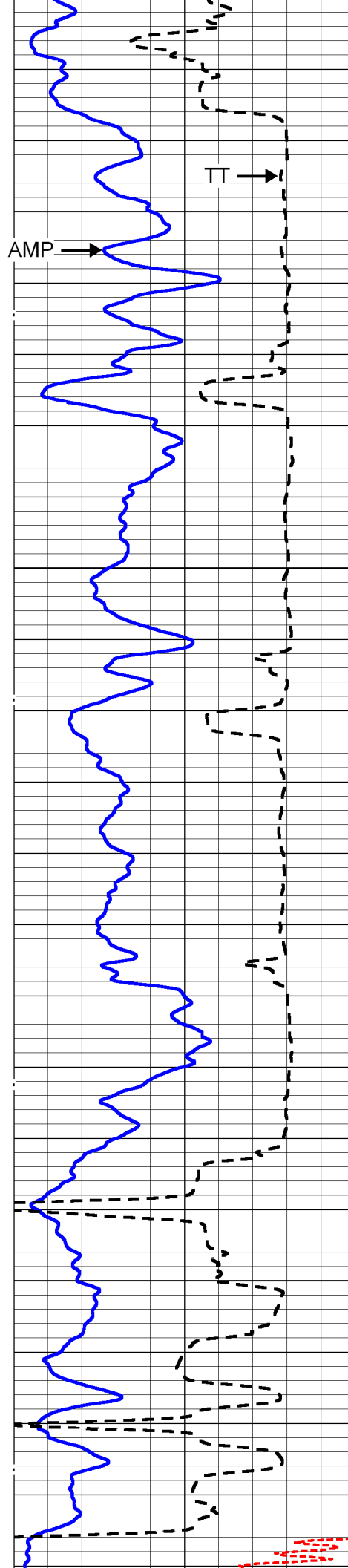
800



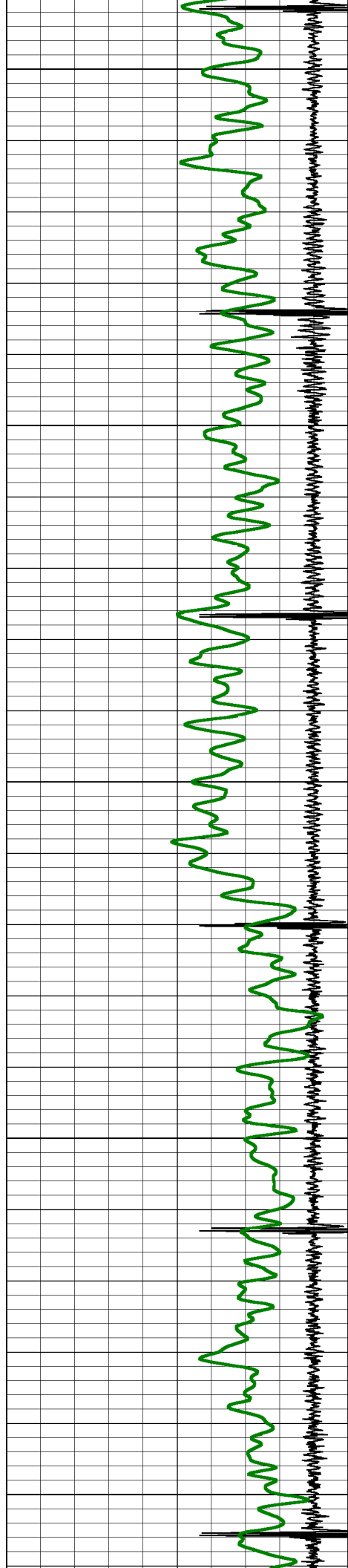


900

1000

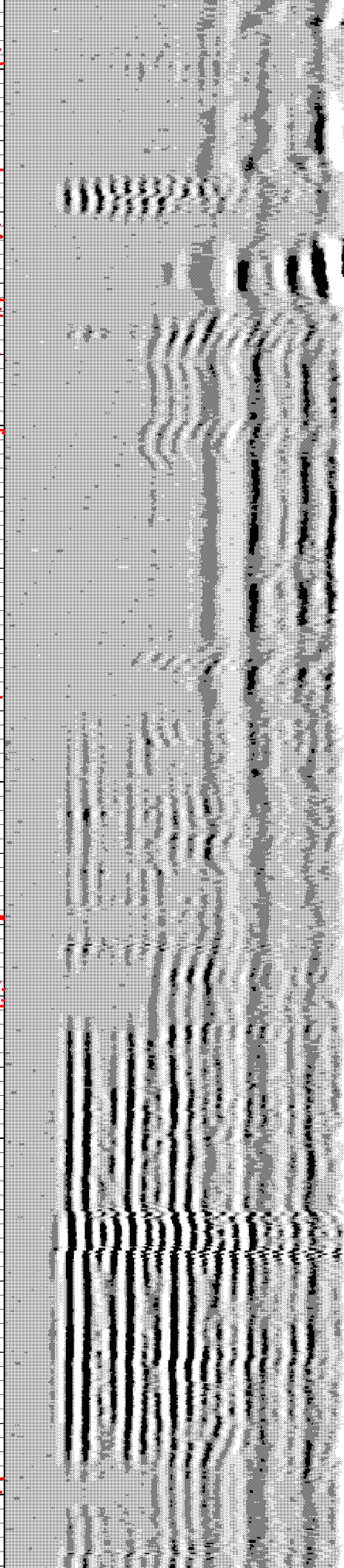
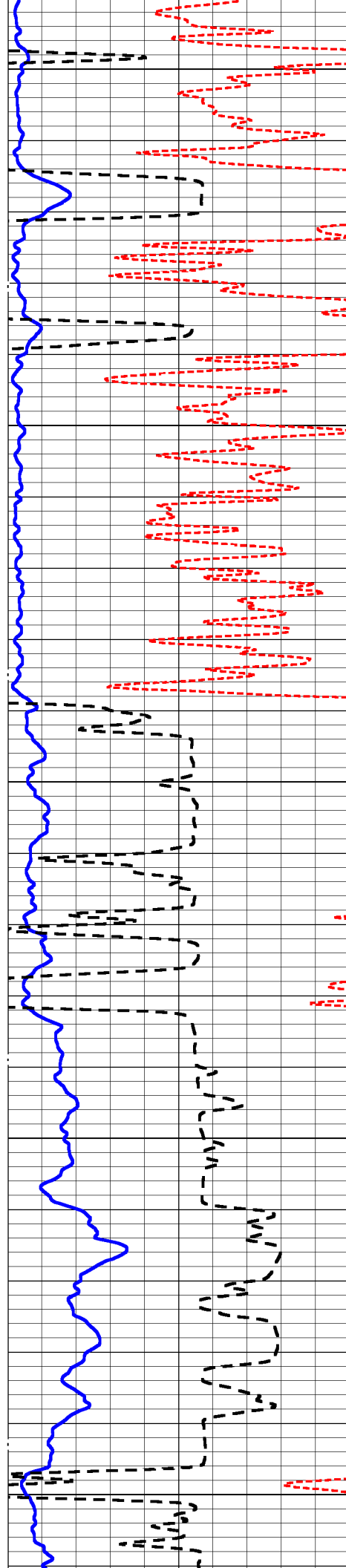




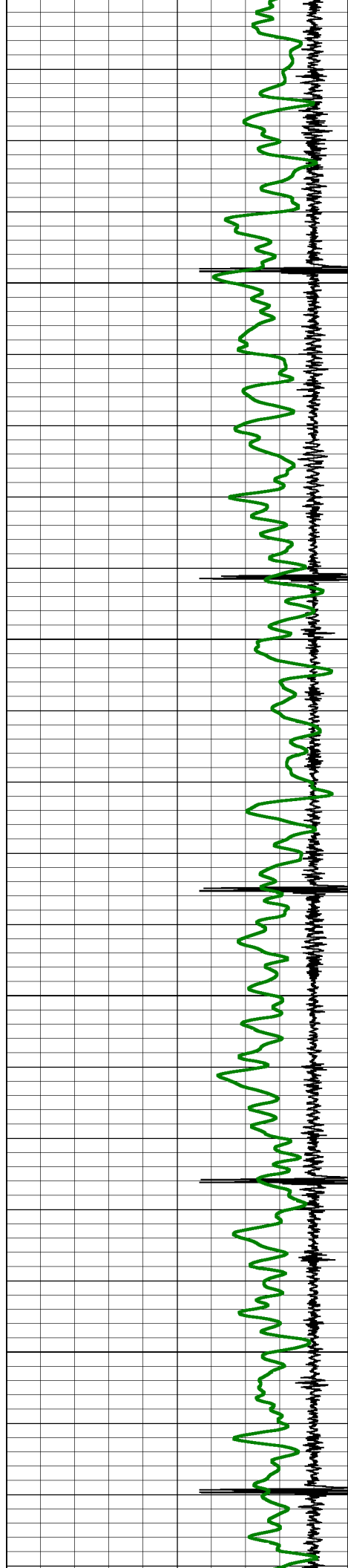


1100

1200

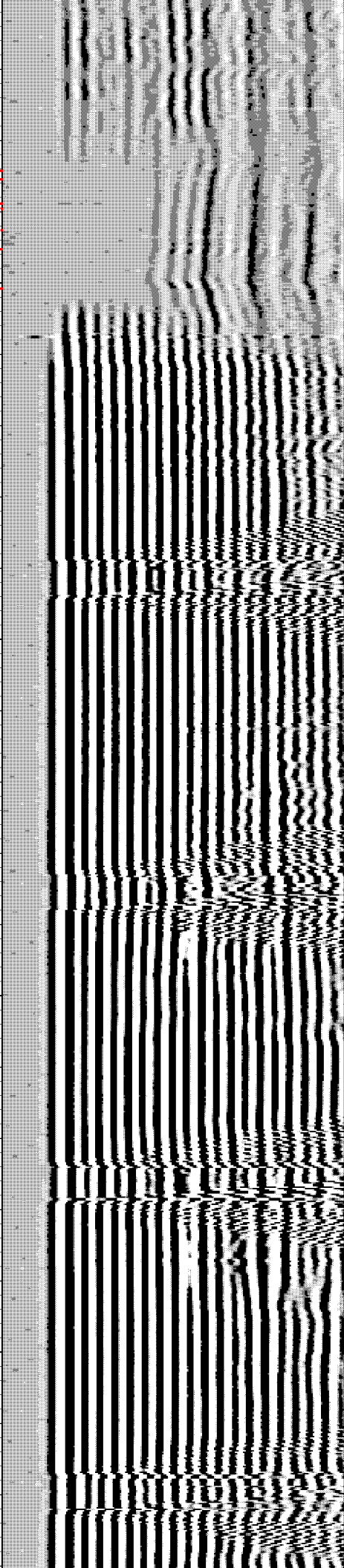
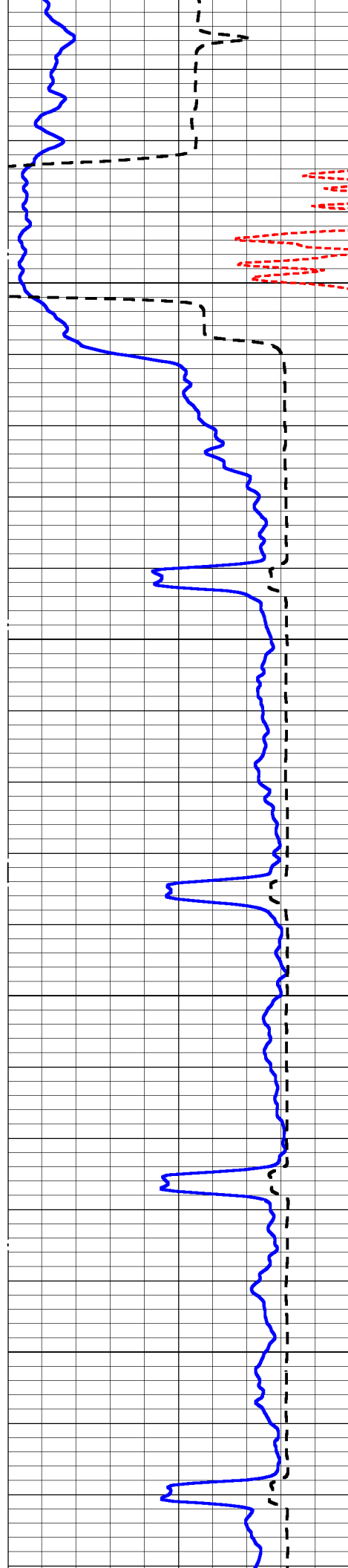


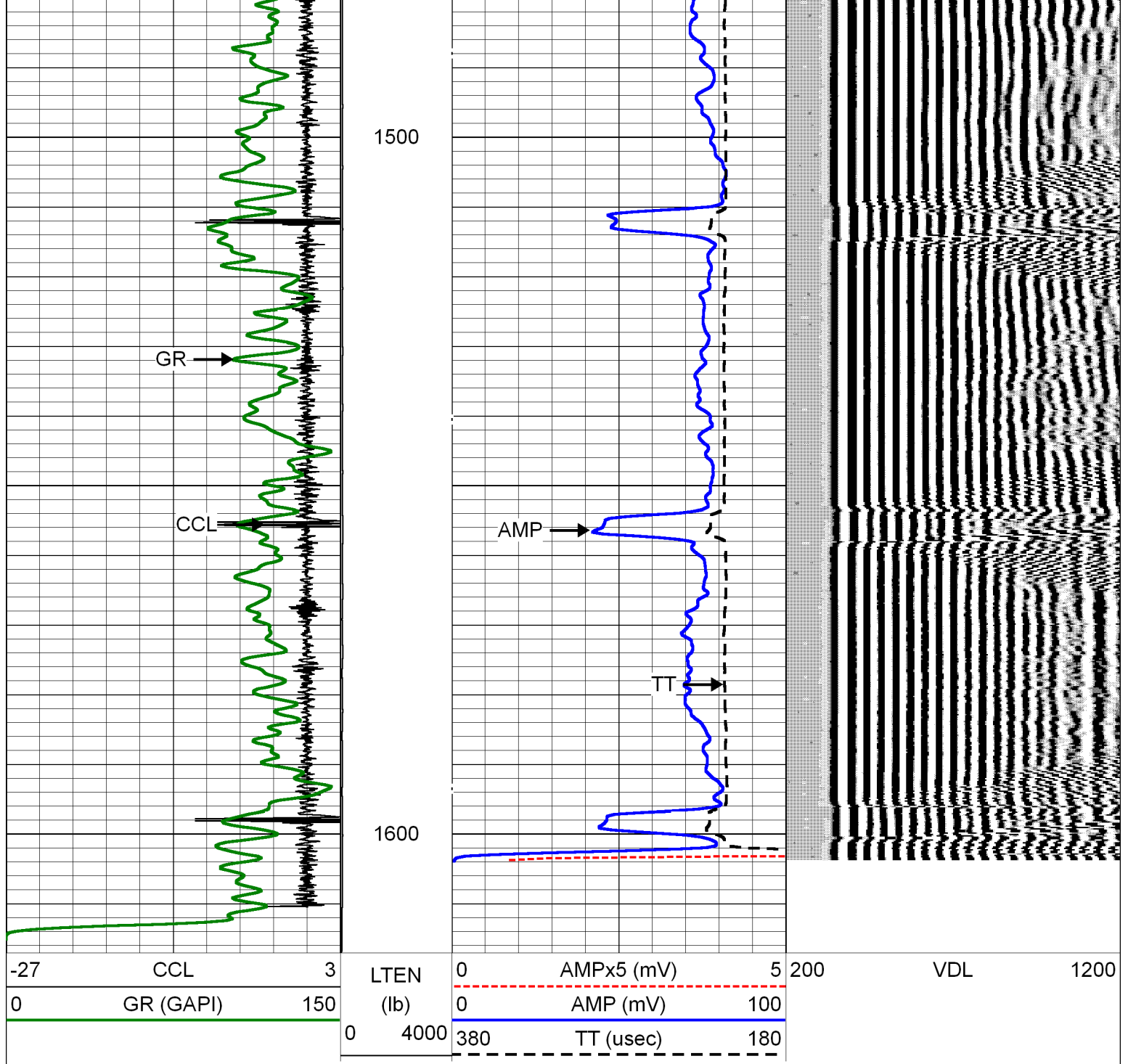




1300

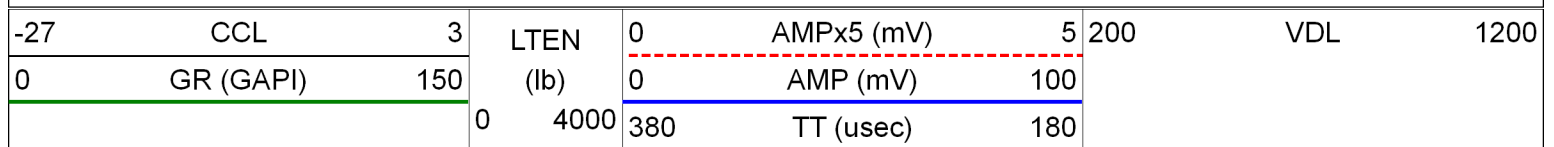
1400

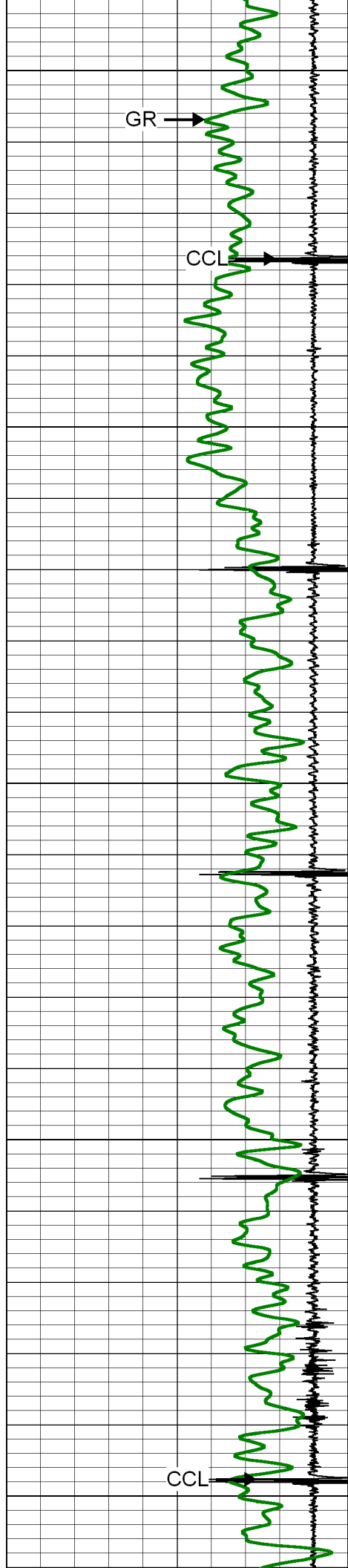




# REPEAT PASS

Database File: 1202016\_greatwestern26-41.db  
 Dataset Pathname: mainnopres/pass1  
 Presentation Format: rmws\_dsc  
 Dataset Creation: Wed Jan 20 10:55:26 2016  
 Charted by: Depth in Feet scaled 1:240

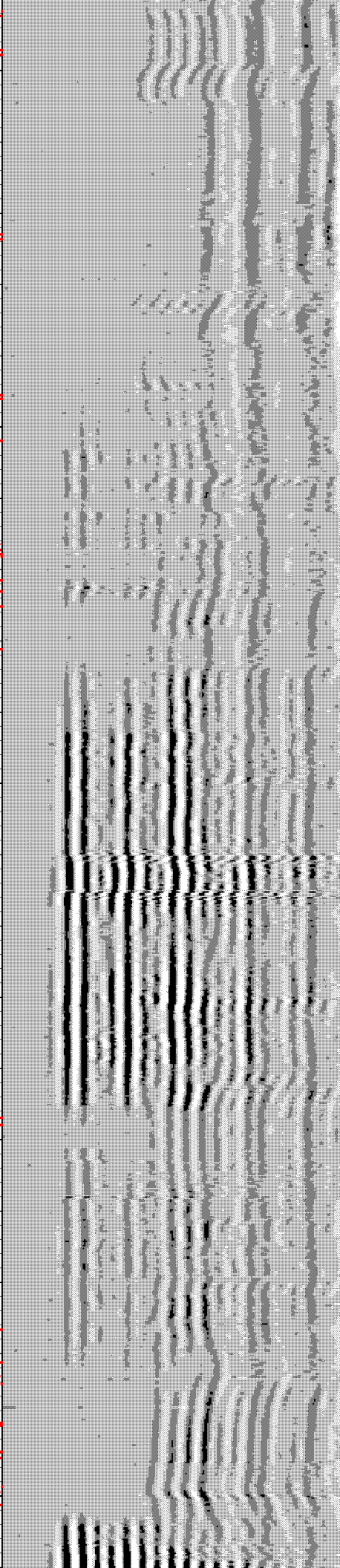
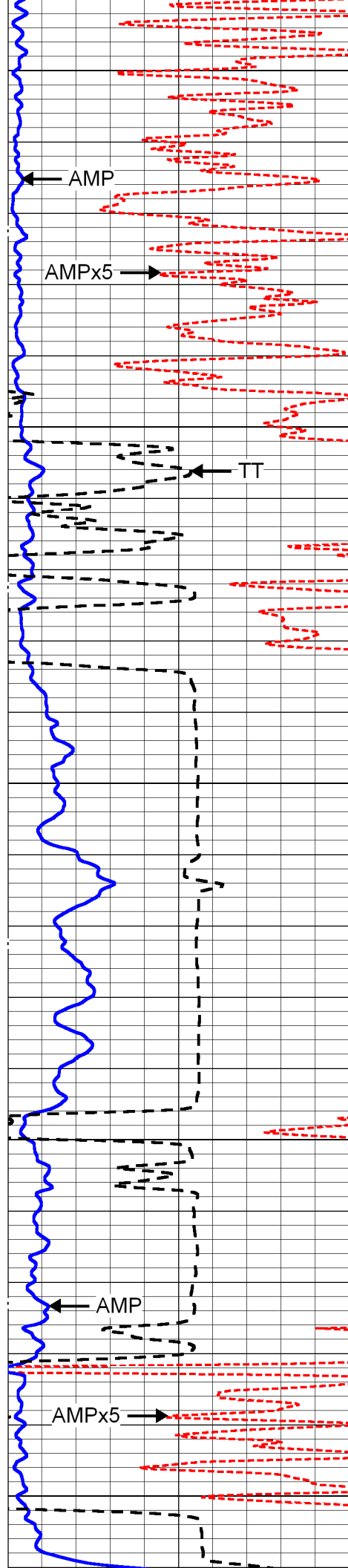


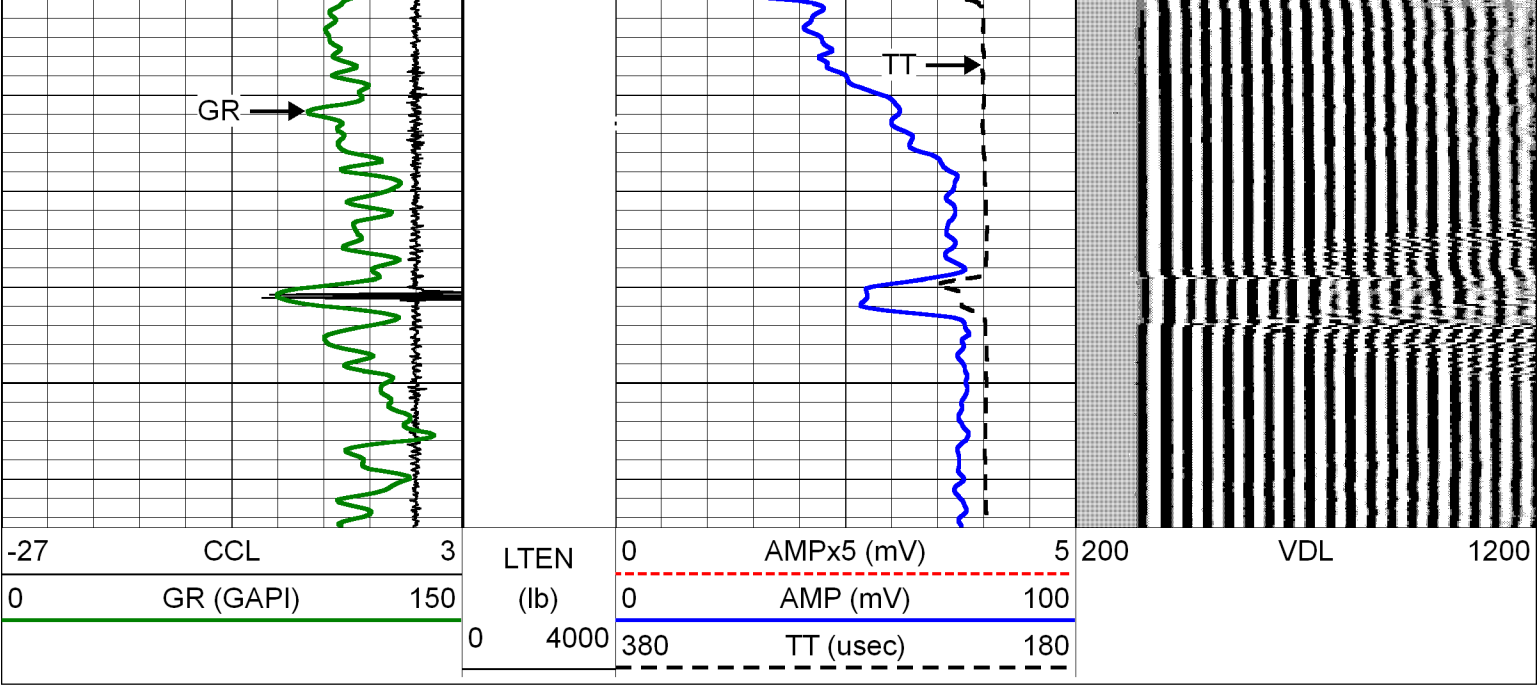



1100

1200


1300






Sensor	Offset (ft)	Schematic	Description	Len (ft)	OD (in)	Wt (lb)
			PTS275	2.83	2.75	
WVF3FT	14.58		RBT-Probe (120303) Probe Radii Bond Tool with Digital Telemetry	8.92	2.75	90.00
WVFCAL	14.58					
WVFS1	14.58					
WVFS2	14.58					
WVFS3	14.58					
WVFS4	14.58					
WVFS5	14.58					
WVFS6	14.58					
WVFS7	14.58					
WVFS8	14.58					
WVF5FT	13.50					
			PTS275	2.83	2.75	



CCL	6.47					
GR	3.73		GR-Probe (080221) Probe 2.75" 4 Channel Pulse	4.58	2.75	30.00
			PTS275	2.83	2.75	
Dataset: 1202016_greatwestern26-41.db: field/well/mainpress/pass1 Total Length: 22.00 ft Total Weight: 120.00 lb O.D. 2.75 in						

	Company	GREAT WESTERN OIL & GAS, LLC.				
	Well	GREAT WESTERN 26-41				
	Field	WATTENBERG				
	County	WELD				
	State	COLORADO				Country U.S.A.