



PROJECT DETAILS: Weld County, CO NAD 83

Geodetic System: US State Plane 1983  
Datum: North American Datum 1983  
Ellipsoid: GRS 1980  
Zone: Colorado Northern Zone  
System Datum: Mean Sea Level  
Local North: True

Project: Weld County, CO NAD 83  
Site: Evans 7-26 Pad  
Well: Evans 3N-14B-XR  
Wellbore: OH  
Design: Plan #1



Azimuths to True North  
Magnetic North: 8.48°



Magnetic Field  
Strength: 52529.4nT  
Dip Angle: 66.93°  
Date: 3/9/2016  
Model: BGGM2015

#### SECTION DETAILS

MD	Inc	Azi	TVD	+N/-S	+E/-W	Dleg	TFace	VSect
0.00	0.00	0.00	0.00	0.00	0.00	0.00	0.00	0.00
600.00	0.00	0.00	600.00	0.00	0.00	0.00	0.00	0.00
1189.42	11.79	225.67	1185.27	-42.22	-43.22	2.00	225.67	-39.42
5612.16	11.79	225.67	5514.73	-673.60	-689.58	0.00	0.00	-628.92
6201.58	0.00	0.00	6100.00	-715.82	-732.80	2.00	180.00	-668.34
6799.71	0.00	0.00	6698.13	-715.82	-732.80	0.00	0.00	-668.34
7617.89	90.00	359.90	7219.00	-194.95	-733.73	11.00	359.90	-148.44
19808.44	90.00	359.90	7219.00	11995.58	-755.54	0.00	0.00	12019.35

#### DESIGN TARGET DETAILS

Name	TVD	+N/-S	+E/-W	Northing	Easting	Latitude	Longitude	Shape
PBHL	7219.00	11995.58	-755.54	1391438.08	3209323.77	40.4054640	-104.7483470	Point
- plan hits target center								

#### WELL DETAILS: Evans 3N-14B-XR

GL 4940 & KB 20 @ 4960.00ft (PD 462)				4940.00
+N/-S	+E/-W	Northing	Easting	Latitude
0.00	0.00	1379449.39	3210181.32	40.3725360

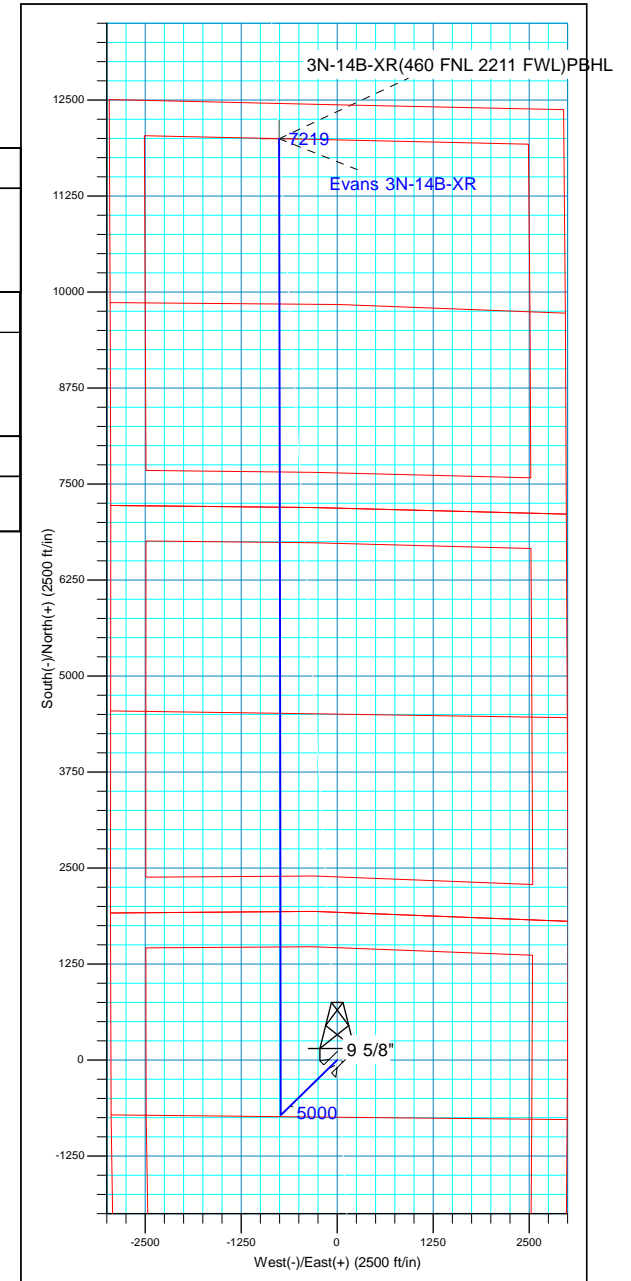
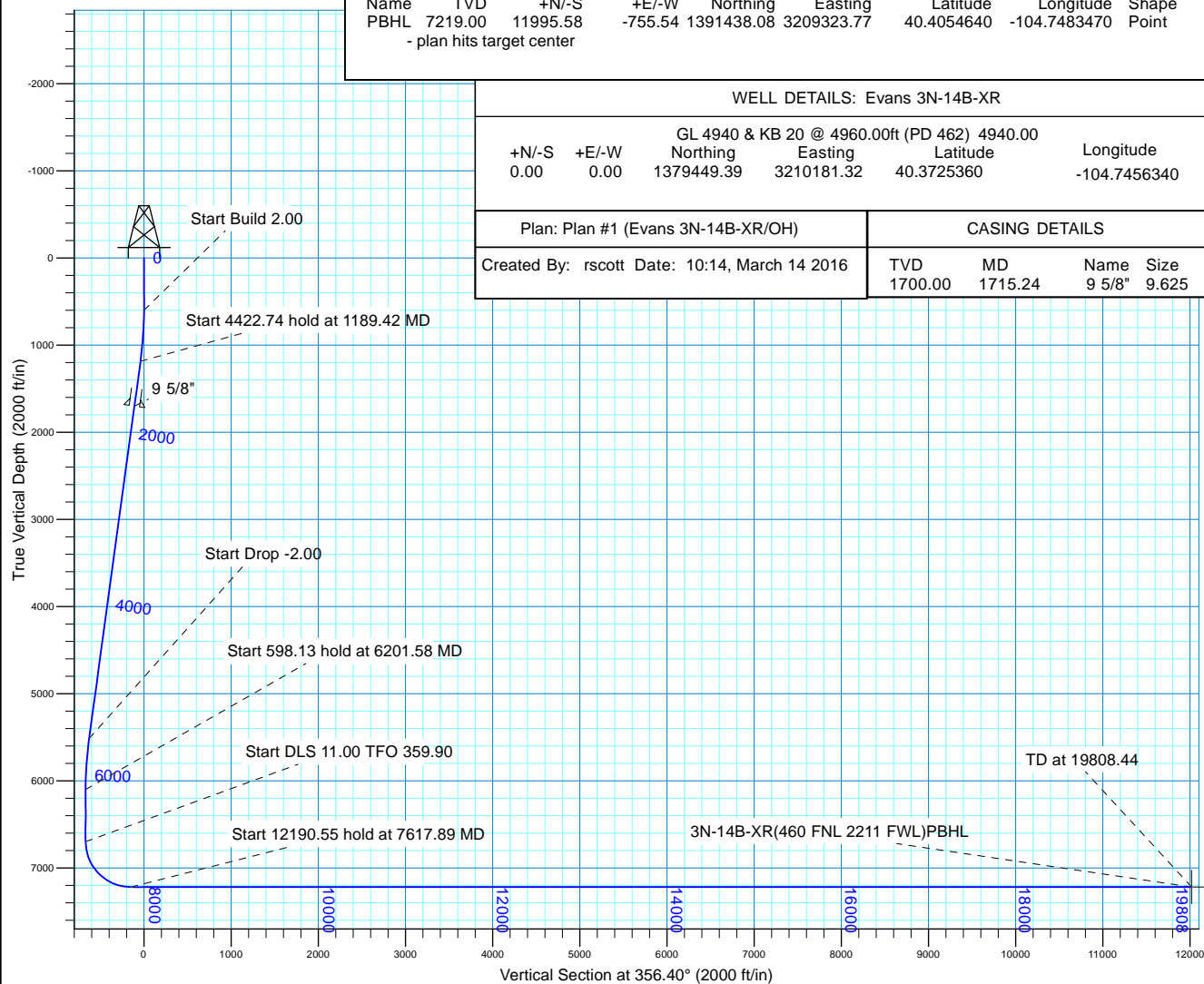
Longitude  
-104.7456340

Plan: Plan #1 (Evans 3N-14B-XR/OH)

#### CASING DETAILS

Created By: rscott Date: 10:14, March 14 2016

TVD	MD	Name	Size
1700.00	1715.24	9 5/8"	9.625





## **Synergy Resources Corp.**

**Weld County, CO NAD 83**

**Evans 7-26 Pad**

**Evans 3N-14B-XR**

**OH**

**Plan: Plan #1**

## **Standard Planning Report**

**13 March, 2016**



<b>Database:</b>	Casper District	<b>Local Co-ordinate Reference:</b>	Well Evans 3N-14B-XR
<b>Company:</b>	Synergy Resources Corp.	<b>TVD Reference:</b>	GL 4940 & KB 20 @ 4960.00ft (PD 462)
<b>Project:</b>	Weld County, CO NAD 83	<b>MD Reference:</b>	GL 4940 & KB 20 @ 4960.00ft (PD 462)
<b>Site:</b>	Evans 7-26 Pad	<b>North Reference:</b>	True
<b>Well:</b>	Evans 3N-14B-XR	<b>Survey Calculation Method:</b>	Minimum Curvature
<b>Wellbore:</b>	OH		
<b>Design:</b>	Plan #1		

<b>Project</b>	Weld County, CO NAD 83		
<b>Map System:</b>	US State Plane 1983	<b>System Datum:</b>	Mean Sea Level
<b>Geo Datum:</b>	North American Datum 1983		
<b>Map Zone:</b>	Colorado Northern Zone		

Site		Evans 7-26 Pad, SECTION 26 T5N R66W			
Site Position:		Northing:	1,379,289.48 usft	Latitude:	40.3720970
From:	Lat/Long	Easting:	3,210,182.68 usft	Longitude:	-104.7456340
Position Uncertainty:	3.28 ft	Slot Radius:	13.200 in	Grid Convergence:	0.49 °

Well	Evans 3N-14B-XR, 1922 FNL 2999 FEL					
Well Position	+N/-S	159.92 ft	Northing:	1,379,449.39 usft	Latitude:	40.3725360
	+E/-W	0.00 ft	Easting:	3,210,181.32 usft	Longitude:	-104.7456340
Position Uncertainty		3.28 ft	Wellhead Elevation:	0.00 ft	Ground Level:	4,940.00 ft

<b>Wellbore</b>	OH				
<b>Magnetics</b>	<b>Model Name</b>	<b>Sample Date</b>	<b>Declination (°)</b>	<b>Dip Angle (°)</b>	<b>Field Strength (nT)</b>
	BGGM2015	3/9/2016	8.48	66.93	52,529

<b>Design</b>	Plan #1			
<b>Audit Notes:</b>				
<b>Version:</b>	<b>Phase:</b>	PLAN	<b>Tie On Depth:</b>	0.00
<b>Vertical Section:</b>	<b>Depth From (TVD) (ft)</b>	<b>+N/-S (ft)</b>	<b>+E/-W (ft)</b>	<b>Direction (°)</b>
	0.00	0.00	0.00	356.40

<b>Plan Sections</b>										
Measured Depth (ft)	Inclination (°)	Azimuth (°)	Vertical Depth (ft)	+N/-S (ft)	+E/-W (ft)	Dogleg Rate (°/100ft)	Build Rate (°/100ft)	Turn Rate (°/100ft)	TFO (°)	Target
0.00	0.00	0.00	0.00	0.00	0.00	0.00	0.00	0.00	0.00	
600.00	0.00	0.00	600.00	0.00	0.00	0.00	0.00	0.00	0.00	
1,189.42	11.79	225.67	1,185.27	-42.22	-43.22	2.00	2.00	0.00	225.67	
5,612.16	11.79	225.67	5,514.73	-673.60	-689.58	0.00	0.00	0.00	0.00	
6,201.58	0.00	0.00	6,100.00	-715.82	-732.80	2.00	-2.00	0.00	180.00	
6,799.71	0.00	0.00	6,698.13	-715.82	-732.80	0.00	0.00	0.00	0.00	
7,617.89	90.00	359.90	7,219.00	-194.95	-733.73	11.00	11.00	-0.01	359.90	
19,808.45	90.00	359.90	7,219.00	11,995.58	-755.54	0.00	0.00	0.00	0.00	3N-14B-XR(460 FNL :

<b>Database:</b>	Casper District	<b>Local Co-ordinate Reference:</b>	Well Evans 3N-14B-XR
<b>Company:</b>	Synergy Resources Corp.	<b>TVD Reference:</b>	GL 4940 & KB 20 @ 4960.00ft (PD 462)
<b>Project:</b>	Weld County, CO NAD 83	<b>MD Reference:</b>	GL 4940 & KB 20 @ 4960.00ft (PD 462)
<b>Site:</b>	Evans 7-26 Pad	<b>North Reference:</b>	True
<b>Well:</b>	Evans 3N-14B-XR	<b>Survey Calculation Method:</b>	Minimum Curvature
<b>Wellbore:</b>	OH		
<b>Design:</b>	Plan #1		

Planned Survey									
Measured Depth (ft)	Inclination (°)	Azimuth (°)	Vertical Depth (ft)	+N/-S (ft)	+E/-W (ft)	Vertical Section (ft)	Dogleg Rate (°/100ft)	Build Rate (°/100ft)	Turn Rate (°/100ft)
0.00	0.00	0.00	0.00	0.00	0.00	0.00	0.00	0.00	0.00
100.00	0.00	0.00	100.00	0.00	0.00	0.00	0.00	0.00	0.00
200.00	0.00	0.00	200.00	0.00	0.00	0.00	0.00	0.00	0.00
300.00	0.00	0.00	300.00	0.00	0.00	0.00	0.00	0.00	0.00
400.00	0.00	0.00	400.00	0.00	0.00	0.00	0.00	0.00	0.00
500.00	0.00	0.00	500.00	0.00	0.00	0.00	0.00	0.00	0.00
600.00	0.00	0.00	600.00	0.00	0.00	0.00	0.00	0.00	0.00
<b>Start Build 2.00</b>									
700.00	2.00	225.67	699.98	-1.22	-1.25	-1.14	2.00	2.00	0.00
800.00	4.00	225.67	799.84	-4.88	-4.99	-4.55	2.00	2.00	0.00
900.00	6.00	225.67	899.45	-10.97	-11.23	-10.24	2.00	2.00	0.00
1,000.00	8.00	225.67	998.70	-19.48	-19.94	-18.19	2.00	2.00	0.00
1,100.00	10.00	225.67	1,097.47	-30.41	-31.13	-28.40	2.00	2.00	0.00
1,189.42	11.79	225.67	1,185.27	-42.22	-43.22	-39.42	2.00	2.00	0.00
<b>Start 4422.74 hold at 1189.42 MD</b>									
1,200.00	11.79	225.67	1,195.63	-43.73	-44.77	-40.83	0.00	0.00	0.00
1,300.00	11.79	225.67	1,293.52	-58.01	-59.38	-54.16	0.00	0.00	0.00
1,400.00	11.79	225.67	1,391.41	-72.28	-74.00	-67.49	0.00	0.00	0.00
1,500.00	11.79	225.67	1,489.30	-86.56	-88.61	-80.82	0.00	0.00	0.00
1,600.00	11.79	225.67	1,587.19	-100.83	-103.23	-94.15	0.00	0.00	0.00
1,700.00	11.79	225.67	1,685.08	-115.11	-117.84	-107.47	0.00	0.00	0.00
1,715.24	11.79	225.67	1,700.00	-117.29	-120.07	-109.51	0.00	0.00	0.00
<b>9 5/8"</b>									
1,800.00	11.79	225.67	1,782.97	-129.39	-132.45	-120.80	0.00	0.00	0.00
1,900.00	11.79	225.67	1,880.86	-143.66	-147.07	-134.13	0.00	0.00	0.00
2,000.00	11.79	225.67	1,978.75	-157.94	-161.68	-147.46	0.00	0.00	0.00
2,100.00	11.79	225.67	2,076.65	-172.21	-176.30	-160.79	0.00	0.00	0.00
2,200.00	11.79	225.67	2,174.54	-186.49	-190.91	-174.12	0.00	0.00	0.00
2,300.00	11.79	225.67	2,272.43	-200.76	-205.53	-187.45	0.00	0.00	0.00
2,400.00	11.79	225.67	2,370.32	-215.04	-220.14	-200.78	0.00	0.00	0.00
2,500.00	11.79	225.67	2,468.21	-229.32	-234.76	-214.11	0.00	0.00	0.00
2,600.00	11.79	225.67	2,566.10	-243.59	-249.37	-227.43	0.00	0.00	0.00
2,700.00	11.79	225.67	2,663.99	-257.87	-263.98	-240.76	0.00	0.00	0.00
2,800.00	11.79	225.67	2,761.88	-272.14	-278.60	-254.09	0.00	0.00	0.00
2,900.00	11.79	225.67	2,859.77	-286.42	-293.21	-267.42	0.00	0.00	0.00
3,000.00	11.79	225.67	2,957.66	-300.69	-307.83	-280.75	0.00	0.00	0.00
3,100.00	11.79	225.67	3,055.55	-314.97	-322.44	-294.08	0.00	0.00	0.00
3,200.00	11.79	225.67	3,153.44	-329.25	-337.06	-307.41	0.00	0.00	0.00
3,300.00	11.79	225.67	3,251.34	-343.52	-351.67	-320.74	0.00	0.00	0.00
3,400.00	11.79	225.67	3,349.23	-357.80	-366.28	-334.06	0.00	0.00	0.00
3,500.00	11.79	225.67	3,447.12	-372.07	-380.90	-347.39	0.00	0.00	0.00
3,600.00	11.79	225.67	3,545.01	-386.35	-395.51	-360.72	0.00	0.00	0.00
3,700.00	11.79	225.67	3,642.90	-400.62	-410.13	-374.05	0.00	0.00	0.00
3,800.00	11.79	225.67	3,740.79	-414.90	-424.74	-387.38	0.00	0.00	0.00
3,900.00	11.79	225.67	3,838.68	-429.18	-439.36	-400.71	0.00	0.00	0.00
4,000.00	11.79	225.67	3,936.57	-443.45	-453.97	-414.04	0.00	0.00	0.00
4,100.00	11.79	225.67	4,034.46	-457.73	-468.59	-427.37	0.00	0.00	0.00
4,200.00	11.79	225.67	4,132.35	-472.00	-483.20	-440.70	0.00	0.00	0.00
4,300.00	11.79	225.67	4,230.24	-486.28	-497.81	-454.02	0.00	0.00	0.00
4,400.00	11.79	225.67	4,328.14	-500.55	-512.43	-467.35	0.00	0.00	0.00
4,500.00	11.79	225.67	4,426.03	-514.83	-527.04	-480.68	0.00	0.00	0.00
4,600.00	11.79	225.67	4,523.92	-529.11	-541.66	-494.01	0.00	0.00	0.00
4,700.00	11.79	225.67	4,621.81	-543.38	-556.27	-507.34	0.00	0.00	0.00

<b>Database:</b>	Casper District	<b>Local Co-ordinate Reference:</b>	Well Evans 3N-14B-XR
<b>Company:</b>	Synergy Resources Corp.	<b>TVD Reference:</b>	GL 4940 & KB 20 @ 4960.00ft (PD 462)
<b>Project:</b>	Weld County, CO NAD 83	<b>MD Reference:</b>	GL 4940 & KB 20 @ 4960.00ft (PD 462)
<b>Site:</b>	Evans 7-26 Pad	<b>North Reference:</b>	True
<b>Well:</b>	Evans 3N-14B-XR	<b>Survey Calculation Method:</b>	Minimum Curvature
<b>Wellbore:</b>	OH		
<b>Design:</b>	Plan #1		

Planned Survey									
Measured Depth (ft)	Inclination (°)	Azimuth (°)	Vertical Depth (ft)	+N/-S (ft)	+E/-W (ft)	Vertical Section (ft)	Dogleg Rate (°/100ft)	Build Rate (°/100ft)	Turn Rate (°/100ft)
4,800.00	11.79	225.67	4,719.70	-557.66	-570.89	-520.67	0.00	0.00	0.00
4,900.00	11.79	225.67	4,817.59	-571.93	-585.50	-534.00	0.00	0.00	0.00
5,000.00	11.79	225.67	4,915.48	-586.21	-600.11	-547.33	0.00	0.00	0.00
5,100.00	11.79	225.67	5,013.37	-600.48	-614.73	-560.65	0.00	0.00	0.00
5,200.00	11.79	225.67	5,111.26	-614.76	-629.34	-573.98	0.00	0.00	0.00
5,300.00	11.79	225.67	5,209.15	-629.04	-643.96	-587.31	0.00	0.00	0.00
5,400.00	11.79	225.67	5,307.04	-643.31	-658.57	-600.64	0.00	0.00	0.00
5,500.00	11.79	225.67	5,404.94	-657.59	-673.19	-613.97	0.00	0.00	0.00
5,600.00	11.79	225.67	5,502.83	-671.86	-687.80	-627.30	0.00	0.00	0.00
5,612.16	11.79	225.67	5,514.73	-673.60	-689.58	-628.92	0.00	0.00	0.00
Start Drop -2.00									
5,700.00	10.03	225.67	5,600.98	-685.22	-701.47	-639.77	2.00	-2.00	0.00
5,800.00	8.03	225.67	5,699.73	-696.18	-712.70	-650.01	2.00	-2.00	0.00
5,900.00	6.03	225.67	5,798.98	-704.74	-721.46	-657.99	2.00	-2.00	0.00
6,000.00	4.03	225.67	5,898.59	-710.87	-727.73	-663.72	2.00	-2.00	0.00
6,100.00	2.03	225.67	5,998.44	-714.56	-731.51	-667.17	2.00	-2.00	0.00
6,200.00	0.03	225.67	6,098.42	-715.82	-732.80	-668.34	2.00	-2.00	0.00
6,201.58	0.00	0.00	6,100.00	-715.82	-732.80	-668.34	2.00	-2.00	0.00
Start 598.13 hold at 6201.58 MD									
6,300.00	0.00	0.00	6,198.42	-715.82	-732.80	-668.34	0.00	0.00	0.00
6,400.00	0.00	0.00	6,298.42	-715.82	-732.80	-668.34	0.00	0.00	0.00
6,500.00	0.00	0.00	6,398.42	-715.82	-732.80	-668.34	0.00	0.00	0.00
6,600.00	0.00	0.00	6,498.42	-715.82	-732.80	-668.34	0.00	0.00	0.00
6,700.00	0.00	0.00	6,598.42	-715.82	-732.80	-668.34	0.00	0.00	0.00
6,799.71	0.00	0.00	6,698.13	-715.82	-732.80	-668.34	0.00	0.00	0.00
Start DLS 11.00 TFO 359.90									
6,800.00	0.03	359.90	6,698.42	-715.82	-732.80	-668.34	11.00	11.00	0.00
6,900.00	11.03	359.90	6,797.80	-706.19	-732.82	-658.73	11.00	11.00	0.00
7,000.00	22.03	359.90	6,893.52	-677.78	-732.87	-630.38	11.00	11.00	0.00
7,100.00	33.03	359.90	6,982.06	-631.63	-732.95	-584.31	11.00	11.00	0.00
7,200.00	44.03	359.90	7,060.17	-569.43	-733.06	-522.22	11.00	11.00	0.00
7,300.00	55.03	359.90	7,124.97	-493.47	-733.20	-446.41	11.00	11.00	0.00
7,400.00	66.03	359.90	7,174.09	-406.54	-733.35	-359.64	11.00	11.00	0.00
7,500.00	77.03	359.90	7,205.72	-311.84	-733.52	-265.11	11.00	11.00	0.00
7,600.00	88.03	359.90	7,218.69	-212.84	-733.70	-166.30	11.00	11.00	0.00
7,617.89	90.00	359.90	7,219.00	-194.95	-733.73	-148.44	11.00	11.00	0.00
Start 12190.55 hold at 7617.89 MD									
7,700.00	90.00	359.90	7,219.00	-112.84	-733.88	-66.49	0.00	0.00	0.00
7,800.00	90.00	359.90	7,219.00	-12.84	-734.06	33.33	0.00	0.00	0.00
7,900.00	90.00	359.90	7,219.00	87.16	-734.24	133.14	0.00	0.00	0.00
8,000.00	90.00	359.90	7,219.00	187.16	-734.42	232.95	0.00	0.00	0.00
8,100.00	90.00	359.90	7,219.00	287.16	-734.59	332.77	0.00	0.00	0.00
8,200.00	90.00	359.90	7,219.00	387.16	-734.77	432.58	0.00	0.00	0.00
8,300.00	90.00	359.90	7,219.00	487.16	-734.95	532.39	0.00	0.00	0.00
8,400.00	90.00	359.90	7,219.00	587.16	-735.13	632.21	0.00	0.00	0.00
8,500.00	90.00	359.90	7,219.00	687.16	-735.31	732.02	0.00	0.00	0.00
8,600.00	90.00	359.90	7,219.00	787.16	-735.49	831.83	0.00	0.00	0.00
8,700.00	90.00	359.90	7,219.00	887.16	-735.67	931.65	0.00	0.00	0.00
8,800.00	90.00	359.90	7,219.00	987.16	-735.85	1,031.46	0.00	0.00	0.00
8,900.00	90.00	359.90	7,219.00	1,087.16	-736.03	1,131.27	0.00	0.00	0.00
9,000.00	90.00	359.90	7,219.00	1,187.16	-736.20	1,231.09	0.00	0.00	0.00
9,100.00	90.00	359.90	7,219.00	1,287.16	-736.38	1,330.90	0.00	0.00	0.00
9,200.00	90.00	359.90	7,219.00	1,387.16	-736.56	1,430.71	0.00	0.00	0.00
9,300.00	90.00	359.90	7,219.00	1,487.16	-736.74	1,530.53	0.00	0.00	0.00

<b>Database:</b>	Casper District	<b>Local Co-ordinate Reference:</b>	Well Evans 3N-14B-XR
<b>Company:</b>	Synergy Resources Corp.	<b>TVD Reference:</b>	GL 4940 & KB 20 @ 4960.00ft (PD 462)
<b>Project:</b>	Weld County, CO NAD 83	<b>MD Reference:</b>	GL 4940 & KB 20 @ 4960.00ft (PD 462)
<b>Site:</b>	Evans 7-26 Pad	<b>North Reference:</b>	True
<b>Well:</b>	Evans 3N-14B-XR	<b>Survey Calculation Method:</b>	Minimum Curvature
<b>Wellbore:</b>	OH		
<b>Design:</b>	Plan #1		

Planned Survey									
Measured Depth (ft)	Inclination (°)	Azimuth (°)	Vertical Depth (ft)	+N/-S (ft)	+E/-W (ft)	Vertical Section (ft)	Dogleg Rate (°/100ft)	Build Rate (°/100ft)	Turn Rate (°/100ft)
9,400.00	90.00	359.90	7,219.00	1,587.15	-736.92	1,630.34	0.00	0.00	0.00
9,500.00	90.00	359.90	7,219.00	1,687.15	-737.10	1,730.15	0.00	0.00	0.00
9,600.00	90.00	359.90	7,219.00	1,787.15	-737.28	1,829.97	0.00	0.00	0.00
9,700.00	90.00	359.90	7,219.00	1,887.15	-737.46	1,929.78	0.00	0.00	0.00
9,800.00	90.00	359.90	7,219.00	1,987.15	-737.64	2,029.59	0.00	0.00	0.00
9,900.00	90.00	359.90	7,219.00	2,087.15	-737.81	2,129.41	0.00	0.00	0.00
10,000.00	90.00	359.90	7,219.00	2,187.15	-737.99	2,229.22	0.00	0.00	0.00
10,100.00	90.00	359.90	7,219.00	2,287.15	-738.17	2,329.03	0.00	0.00	0.00
10,200.00	90.00	359.90	7,219.00	2,387.15	-738.35	2,428.85	0.00	0.00	0.00
10,300.00	90.00	359.90	7,219.00	2,487.15	-738.53	2,528.66	0.00	0.00	0.00
10,400.00	90.00	359.90	7,219.00	2,587.15	-738.71	2,628.47	0.00	0.00	0.00
10,500.00	90.00	359.90	7,219.00	2,687.15	-738.89	2,728.29	0.00	0.00	0.00
10,600.00	90.00	359.90	7,219.00	2,787.15	-739.07	2,828.10	0.00	0.00	0.00
10,700.00	90.00	359.90	7,219.00	2,887.15	-739.25	2,927.91	0.00	0.00	0.00
10,800.00	90.00	359.90	7,219.00	2,987.15	-739.42	3,027.73	0.00	0.00	0.00
10,900.00	90.00	359.90	7,219.00	3,087.15	-739.60	3,127.54	0.00	0.00	0.00
11,000.00	90.00	359.90	7,219.00	3,187.15	-739.78	3,227.35	0.00	0.00	0.00
11,100.00	90.00	359.90	7,219.00	3,287.15	-739.96	3,327.17	0.00	0.00	0.00
11,200.00	90.00	359.90	7,219.00	3,387.15	-740.14	3,426.98	0.00	0.00	0.00
11,300.00	90.00	359.90	7,219.00	3,487.15	-740.32	3,526.79	0.00	0.00	0.00
11,400.00	90.00	359.90	7,219.00	3,587.15	-740.50	3,626.61	0.00	0.00	0.00
11,500.00	90.00	359.90	7,219.00	3,687.15	-740.68	3,726.42	0.00	0.00	0.00
11,600.00	90.00	359.90	7,219.00	3,787.15	-740.86	3,826.23	0.00	0.00	0.00
11,700.00	90.00	359.90	7,219.00	3,887.15	-741.03	3,926.05	0.00	0.00	0.00
11,800.00	90.00	359.90	7,219.00	3,987.15	-741.21	4,025.86	0.00	0.00	0.00
11,900.00	90.00	359.90	7,219.00	4,087.15	-741.39	4,125.67	0.00	0.00	0.00
12,000.00	90.00	359.90	7,219.00	4,187.15	-741.57	4,225.49	0.00	0.00	0.00
12,100.00	90.00	359.90	7,219.00	4,287.15	-741.75	4,325.30	0.00	0.00	0.00
12,200.00	90.00	359.90	7,219.00	4,387.15	-741.93	4,425.11	0.00	0.00	0.00
12,300.00	90.00	359.90	7,219.00	4,487.15	-742.11	4,524.93	0.00	0.00	0.00
12,400.00	90.00	359.90	7,219.00	4,587.15	-742.29	4,624.74	0.00	0.00	0.00
12,500.00	90.00	359.90	7,219.00	4,687.15	-742.47	4,724.55	0.00	0.00	0.00
12,600.00	90.00	359.90	7,219.00	4,787.15	-742.64	4,824.37	0.00	0.00	0.00
12,700.00	90.00	359.90	7,219.00	4,887.15	-742.82	4,924.18	0.00	0.00	0.00
12,800.00	90.00	359.90	7,219.00	4,987.15	-743.00	5,023.99	0.00	0.00	0.00
12,900.00	90.00	359.90	7,219.00	5,087.15	-743.18	5,123.81	0.00	0.00	0.00
13,000.00	90.00	359.90	7,219.00	5,187.15	-743.36	5,223.62	0.00	0.00	0.00
13,100.00	90.00	359.90	7,219.00	5,287.15	-743.54	5,323.43	0.00	0.00	0.00
13,200.00	90.00	359.90	7,219.00	5,387.15	-743.72	5,423.25	0.00	0.00	0.00
13,300.00	90.00	359.90	7,219.00	5,487.15	-743.90	5,523.06	0.00	0.00	0.00
13,400.00	90.00	359.90	7,219.00	5,587.15	-744.08	5,622.87	0.00	0.00	0.00
13,500.00	90.00	359.90	7,219.00	5,687.15	-744.25	5,722.69	0.00	0.00	0.00
13,600.00	90.00	359.90	7,219.00	5,787.15	-744.43	5,822.50	0.00	0.00	0.00
13,700.00	90.00	359.90	7,219.00	5,887.15	-744.61	5,922.31	0.00	0.00	0.00
13,800.00	90.00	359.90	7,219.00	5,987.15	-744.79	6,022.13	0.00	0.00	0.00
13,900.00	90.00	359.90	7,219.00	6,087.15	-744.97	6,121.94	0.00	0.00	0.00
14,000.00	90.00	359.90	7,219.00	6,187.15	-745.15	6,221.75	0.00	0.00	0.00
14,100.00	90.00	359.90	7,219.00	6,287.15	-745.33	6,321.57	0.00	0.00	0.00
14,200.00	90.00	359.90	7,219.00	6,387.15	-745.51	6,421.38	0.00	0.00	0.00
14,300.00	90.00	359.90	7,219.00	6,487.15	-745.69	6,521.19	0.00	0.00	0.00
14,400.00	90.00	359.90	7,219.00	6,587.15	-745.86	6,621.01	0.00	0.00	0.00
14,500.00	90.00	359.90	7,219.00	6,687.15	-746.04	6,720.82	0.00	0.00	0.00
14,600.00	90.00	359.90	7,219.00	6,787.15	-746.22	6,820.63	0.00	0.00	0.00
14,700.00	90.00	359.90	7,219.00	6,887.15	-746.40	6,920.45	0.00	0.00	0.00

<b>Database:</b>	Casper District	<b>Local Co-ordinate Reference:</b>	Well Evans 3N-14B-XR
<b>Company:</b>	Synergy Resources Corp.	<b>TVD Reference:</b>	GL 4940 & KB 20 @ 4960.00ft (PD 462)
<b>Project:</b>	Weld County, CO NAD 83	<b>MD Reference:</b>	GL 4940 & KB 20 @ 4960.00ft (PD 462)
<b>Site:</b>	Evans 7-26 Pad	<b>North Reference:</b>	True
<b>Well:</b>	Evans 3N-14B-XR	<b>Survey Calculation Method:</b>	Minimum Curvature
<b>Wellbore:</b>	OH		
<b>Design:</b>	Plan #1		

Planned Survey									
Measured Depth (ft)	Inclination (°)	Azimuth (°)	Vertical Depth (ft)	+N/-S (ft)	+E/-W (ft)	Vertical Section (ft)	Dogleg Rate (°/100ft)	Build Rate (°/100ft)	Turn Rate (°/100ft)
14,800.00	90.00	359.90	7,219.00	6,987.15	-746.58	7,020.26	0.00	0.00	0.00
14,900.00	90.00	359.90	7,219.00	7,087.15	-746.76	7,120.07	0.00	0.00	0.00
15,000.00	90.00	359.90	7,219.00	7,187.15	-746.94	7,219.89	0.00	0.00	0.00
15,100.00	90.00	359.90	7,219.00	7,287.15	-747.12	7,319.70	0.00	0.00	0.00
15,200.00	90.00	359.90	7,219.00	7,387.15	-747.30	7,419.51	0.00	0.00	0.00
15,300.00	90.00	359.90	7,219.00	7,487.15	-747.47	7,519.33	0.00	0.00	0.00
15,400.00	90.00	359.90	7,219.00	7,587.15	-747.65	7,619.14	0.00	0.00	0.00
15,500.00	90.00	359.90	7,219.00	7,687.15	-747.83	7,718.95	0.00	0.00	0.00
15,600.00	90.00	359.90	7,219.00	7,787.15	-748.01	7,818.76	0.00	0.00	0.00
15,700.00	90.00	359.90	7,219.00	7,887.15	-748.19	7,918.58	0.00	0.00	0.00
15,800.00	90.00	359.90	7,219.00	7,987.14	-748.37	8,018.39	0.00	0.00	0.00
15,900.00	90.00	359.90	7,219.00	8,087.14	-748.55	8,118.20	0.00	0.00	0.00
16,000.00	90.00	359.90	7,219.00	8,187.14	-748.73	8,218.02	0.00	0.00	0.00
16,100.00	90.00	359.90	7,219.00	8,287.14	-748.91	8,317.83	0.00	0.00	0.00
16,200.00	90.00	359.90	7,219.00	8,387.14	-749.08	8,417.64	0.00	0.00	0.00
16,300.00	90.00	359.90	7,219.00	8,487.14	-749.26	8,517.46	0.00	0.00	0.00
16,400.00	90.00	359.90	7,219.00	8,587.14	-749.44	8,617.27	0.00	0.00	0.00
16,500.00	90.00	359.90	7,219.00	8,687.14	-749.62	8,717.08	0.00	0.00	0.00
16,600.00	90.00	359.90	7,219.00	8,787.14	-749.80	8,816.90	0.00	0.00	0.00
16,700.00	90.00	359.90	7,219.00	8,887.14	-749.98	8,916.71	0.00	0.00	0.00
16,800.00	90.00	359.90	7,219.00	8,987.14	-750.16	9,016.52	0.00	0.00	0.00
16,900.00	90.00	359.90	7,219.00	9,087.14	-750.34	9,116.34	0.00	0.00	0.00
17,000.00	90.00	359.90	7,219.00	9,187.14	-750.52	9,216.15	0.00	0.00	0.00
17,100.00	90.00	359.90	7,219.00	9,287.14	-750.69	9,315.96	0.00	0.00	0.00
17,200.00	90.00	359.90	7,219.00	9,387.14	-750.87	9,415.78	0.00	0.00	0.00
17,300.00	90.00	359.90	7,219.00	9,487.14	-751.05	9,515.59	0.00	0.00	0.00
17,400.00	90.00	359.90	7,219.00	9,587.14	-751.23	9,615.40	0.00	0.00	0.00
17,500.00	90.00	359.90	7,219.00	9,687.14	-751.41	9,715.22	0.00	0.00	0.00
17,600.00	90.00	359.90	7,219.00	9,787.14	-751.59	9,815.03	0.00	0.00	0.00
17,700.00	90.00	359.90	7,219.00	9,887.14	-751.77	9,914.84	0.00	0.00	0.00
17,800.00	90.00	359.90	7,219.00	9,987.14	-751.95	10,014.66	0.00	0.00	0.00
17,900.00	90.00	359.90	7,219.00	10,087.14	-752.13	10,114.47	0.00	0.00	0.00
18,000.00	90.00	359.90	7,219.00	10,187.14	-752.30	10,214.28	0.00	0.00	0.00
18,100.00	90.00	359.90	7,219.00	10,287.14	-752.48	10,314.10	0.00	0.00	0.00
18,200.00	90.00	359.90	7,219.00	10,387.14	-752.66	10,413.91	0.00	0.00	0.00
18,300.00	90.00	359.90	7,219.00	10,487.14	-752.84	10,513.72	0.00	0.00	0.00
18,400.00	90.00	359.90	7,219.00	10,587.14	-753.02	10,613.54	0.00	0.00	0.00
18,500.00	90.00	359.90	7,219.00	10,687.14	-753.20	10,713.35	0.00	0.00	0.00
18,600.00	90.00	359.90	7,219.00	10,787.14	-753.38	10,813.16	0.00	0.00	0.00
18,700.00	90.00	359.90	7,219.00	10,887.14	-753.56	10,912.98	0.00	0.00	0.00
18,800.00	90.00	359.90	7,219.00	10,987.14	-753.74	11,012.79	0.00	0.00	0.00
18,900.00	90.00	359.90	7,219.00	11,087.14	-753.91	11,112.60	0.00	0.00	0.00
19,000.00	90.00	359.90	7,219.00	11,187.14	-754.09	11,212.42	0.00	0.00	0.00
19,100.00	90.00	359.90	7,219.00	11,287.14	-754.27	11,312.23	0.00	0.00	0.00
19,200.00	90.00	359.90	7,219.00	11,387.14	-754.45	11,412.04	0.00	0.00	0.00
19,300.00	90.00	359.90	7,219.00	11,487.14	-754.63	11,511.86	0.00	0.00	0.00
19,400.00	90.00	359.90	7,219.00	11,587.14	-754.81	11,611.67	0.00	0.00	0.00
19,500.00	90.00	359.90	7,219.00	11,687.14	-754.99	11,711.48	0.00	0.00	0.00
19,600.00	90.00	359.90	7,219.00	11,787.14	-755.17	11,811.30	0.00	0.00	0.00
19,700.00	90.00	359.90	7,219.00	11,887.14	-755.35	11,911.11	0.00	0.00	0.00
19,800.00	90.00	359.90	7,219.00	11,987.14	-755.52	12,010.92	0.00	0.00	0.00
19,808.45	90.00	359.90	7,219.00	11,995.58	-755.54	12,019.35	0.00	0.00	0.00
TD at 19808.44 - 3N-14B-XR(460 FNL 2211 FWL)PBHL									

<b>Database:</b>	Casper District	<b>Local Co-ordinate Reference:</b>	Well Evans 3N-14B-XR
<b>Company:</b>	Synergy Resources Corp.	<b>TVD Reference:</b>	GL 4940 & KB 20 @ 4960.00ft (PD 462)
<b>Project:</b>	Weld County, CO NAD 83	<b>MD Reference:</b>	GL 4940 & KB 20 @ 4960.00ft (PD 462)
<b>Site:</b>	Evans 7-26 Pad	<b>North Reference:</b>	True
<b>Well:</b>	Evans 3N-14B-XR	<b>Survey Calculation Method:</b>	Minimum Curvature
<b>Wellbore:</b>	OH		
<b>Design:</b>	Plan #1		

Design Targets									
Target Name	Dip Angle	Dip Dir.	TVD	+N/-S	+E/-W	Northing	Easting	Latitude	Longitude
- hit/miss target	(°)	(°)	(ft)	(ft)	(ft)	(usft)	(usft)		
- Shape									
3N-14B-XR(460 FNL 22'	0.00	0.00	7,219.00	11,995.58	-755.54	1,391,438.08	3,209,323.77	40.4054640	-104.7483470
- plan hits target center									
- Point									

Casing Points					
Measured Depth	Vertical Depth	Name		Casing Diameter	Hole Diameter
(ft)	(ft)			(in)	(in)
1,715.24	1,700.00	9 5/8"		9.625	13.500

Plan Annotations				
Measured Depth	Vertical Depth	Local Coordinates		Comment
(ft)	(ft)	+N/-S (ft)	+E/-W (ft)	
600.00	600.00	0.00	0.00	Start Build 2.00
1,189.42	1,185.27	-42.22	-43.22	Start 4422.74 hold at 1189.42 MD
5,612.16	5,514.73	-673.60	-689.58	Start Drop -2.00
6,201.58	6,100.00	-715.82	-732.80	Start 598.13 hold at 6201.58 MD
6,799.71	6,698.13	-715.82	-732.80	Start DLS 11.00 TFO 359.90
7,617.89	7,219.00	-194.95	-733.73	Start 12190.55 hold at 7617.89 MD
19,808.45	7,219.00	11,995.58	-755.54	TD at 19808.44