



PROJECT DETAILS: Weld County, CO NAD 83

Geodetic System: US State Plane 1983
Datum: North American Datum 1983
Ellipsoid: GRS 1980
Zone: Colorado Northern Zone
System Datum: Mean Sea Level
Local North: True

Project: Weld County, CO NAD 83
Site: Evans 7-26 Pad
Well: Evans 24N-14B-L
Wellbore: OH
Design: Plan #1



Azimuths to True North
Magnetic North: 8.48°



Magnetic Field
Strength: 52529.5nT
Dip Angle: 66.93°
Date: 3/9/2016
Model: BGGM2015

SECTION DETAILS

MD	Inc	Azi	TVD	+N/-S	+E/-W	Dleg	TFace	VSect
0.00	0.00	0.00	0.00	0.00	0.00	0.00	0.00	0.00
500.00	0.00	0.00	500.00	0.00	0.00	0.00	0.00	0.00
1454.81	19.10	108.95	1437.23	-51.20	149.10	2.00	108.95	-27.07
5413.17	19.10	108.95	5177.77	-471.80	1373.90	0.00	0.00	-249.44
6367.99	0.00	0.00	6115.00	-523.00	1523.00	2.00	180.00	-276.51
6972.12	0.00	0.00	6719.13	-523.00	1523.00	0.00	0.00	-276.51
7790.80	90.05	359.89	7240.00	-1.63	1521.99	11.00	359.89	238.19
17217.23	90.05	359.89	7231.00	9424.78	1503.72	0.00	0.00	9543.98

DESIGN TARGET DETAILS

Name	TVD	+N/-S	+E/-W	Northing	Easting	Latitude	Longitude	Shape
PBHL	7231.00	9424.78	1503.72	1388771.10	3212029.71	40.3980800	-104.7387130	Point
- plan hits target center								

WELL DETAILS: Evans 24N-14B-L

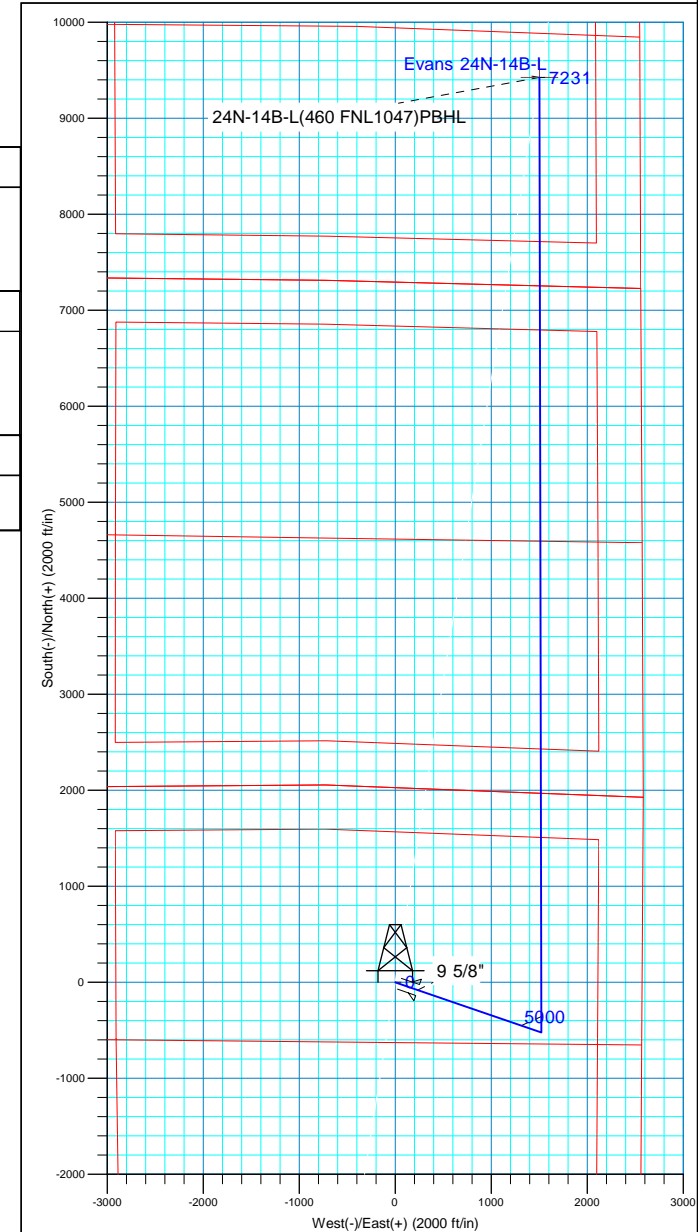
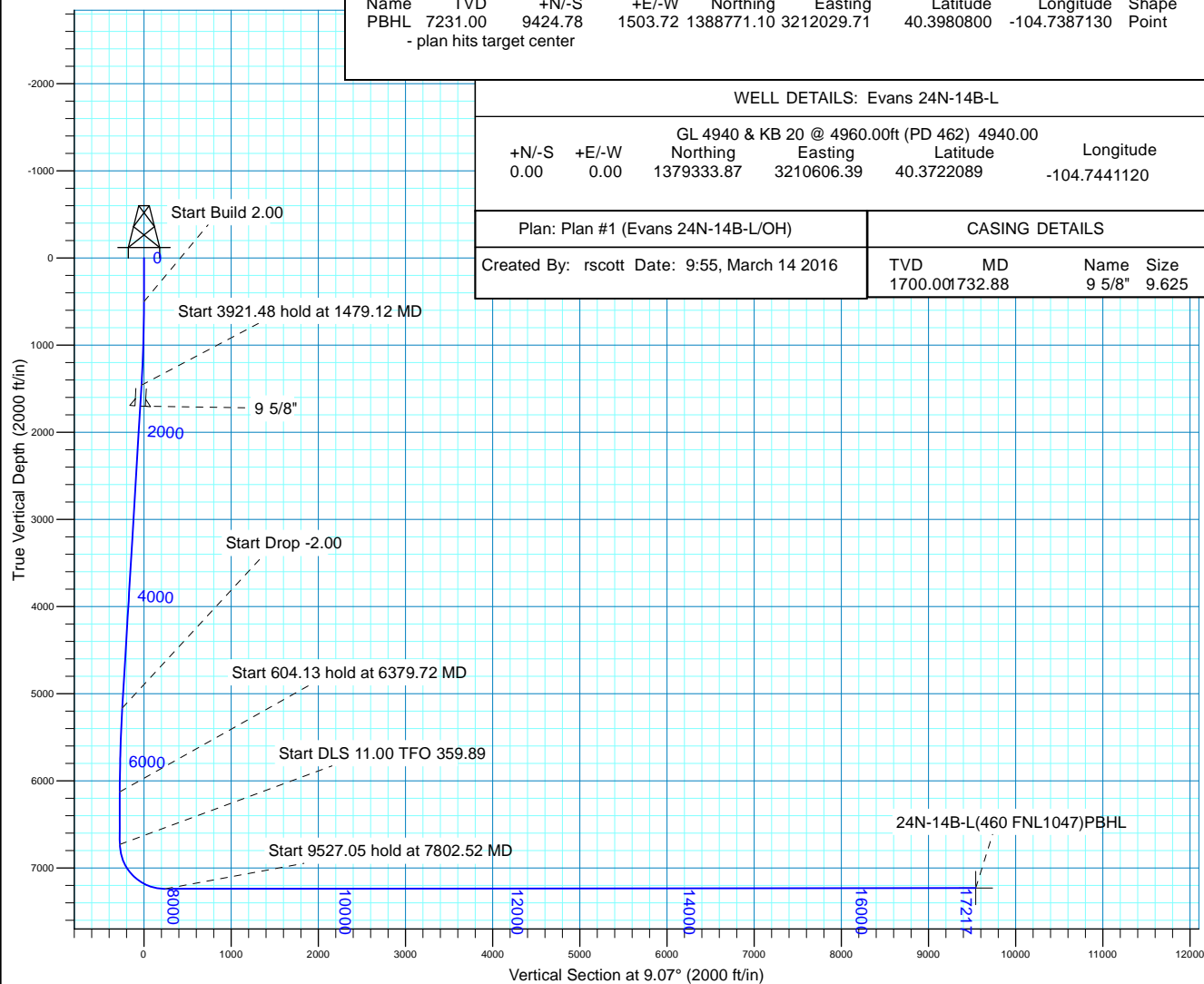
GL 4940 & KB 20 @ 4960.00ft (PD 462)				4940.00	
+N/-S	+E/-W	Northing	Easting	Latitude	Longitude
0.00	0.00	1379333.87	3210606.39	40.3722089	-104.7441120

Plan: Plan #1 (Evans 24N-14B-L/OH)

CASING DETAILS

Created By: rscott Date: 9:55, March 14 2016

TVD	MD	Name	Size
1700.00	732.88	9 5/8"	9.625





Synergy Resources Corp.

Weld County, CO NAD 83

Evans 7-26 Pad

Evans 24N-14B-L

OH

Plan: Plan #1

Standard Planning Report

13 March, 2016



Database:	Casper District	Local Co-ordinate Reference:	Well Evans 24N-14B-L
Company:	Synergy Resources Corp.	TVD Reference:	GL 4940 & KB 20 @ 4960.00ft (PD 462)
Project:	Weld County, CO NAD 83	MD Reference:	GL 4940 & KB 20 @ 4960.00ft (PD 462)
Site:	Evans 7-26 Pad	North Reference:	True
Well:	Evans 24N-14B-L	Survey Calculation Method:	Minimum Curvature
Wellbore:	OH		
Design:	Plan #1		

Project	Weld County, CO NAD 83		
Map System:	US State Plane 1983	System Datum:	Mean Sea Level
Geo Datum:	North American Datum 1983		
Map Zone:	Colorado Northern Zone		

Site		Evans 7-26 Pad, SECTION 26 T5N R66W			
Site Position:		Northing:	1,379,289.48 usft	Latitude:	40.3720970
From:	Lat/Long	Easting:	3,210,182.68 usft	Longitude:	-104.7456340
Position Uncertainty:	3.28 ft	Slot Radius:	13.200 in	Grid Convergence:	0.49 °

Well	Evans 24N-14B-L, 2025 FNL 2574 FEL					
Well Position	+N/-S	40.79 ft	Northing:	1,379,333.87 usft	Latitude:	40.3722090
	+E/-W	424.07 ft	Easting:	3,210,606.39 usft	Longitude:	-104.7441120
Position Uncertainty		3.28 ft	Wellhead Elevation:	0.00 ft	Ground Level:	4,940.00 ft

Wellbore	OH				
Magnetics	Model Name	Sample Date	Declination (°)	Dip Angle (°)	Field Strength (nT)
	BGGM2015	3/9/2016	8.48	66.93	52,529

Design	Plan #1			
Audit Notes:				
Version:	Phase:	PLAN	Tie On Depth:	0.00
Vertical Section:	Depth From (TVD) (ft)	+N/-S (ft)	+E/-W (ft)	Direction (°)
	0.00	0.00	0.00	9.07

Plan Sections										
Measured Depth (ft)	Inclination (°)	Azimuth (°)	Vertical Depth (ft)	+N/-S (ft)	+E/-W (ft)	Dogleg Rate (°/100ft)	Build Rate (°/100ft)	Turn Rate (°/100ft)	TFO (°)	Target
0.00	0.00	0.00	0.00	0.00	0.00	0.00	0.00	0.00	0.00	
500.00	0.00	0.00	500.00	0.00	0.00	0.00	0.00	0.00	0.00	
1,454.81	19.10	108.95	1,437.23	-51.20	149.10	2.00	2.00	0.00	108.95	
5,413.17	19.10	108.95	5,177.77	-471.80	1,373.90	0.00	0.00	0.00	0.00	
6,367.99	0.00	0.00	6,115.00	-523.00	1,523.00	2.00	-2.00	0.00	180.00	
6,972.12	0.00	0.00	6,719.13	-523.00	1,523.00	0.00	0.00	0.00	0.00	
7,790.80	90.05	359.89	7,240.00	-1.63	1,521.99	11.00	11.00	-0.01	359.89	
17,217.23	90.05	359.89	7,231.00	9,424.78	1,503.72	0.00	0.00	0.00	0.00	24N-14B-L(460 FNL1

Database:	Casper District	Local Co-ordinate Reference:	Well Evans 24N-14B-L
Company:	Synergy Resources Corp.	TVD Reference:	GL 4940 & KB 20 @ 4960.00ft (PD 462)
Project:	Weld County, CO NAD 83	MD Reference:	GL 4940 & KB 20 @ 4960.00ft (PD 462)
Site:	Evans 7-26 Pad	North Reference:	True
Well:	Evans 24N-14B-L	Survey Calculation Method:	Minimum Curvature
Wellbore:	OH		
Design:	Plan #1		

Planned Survey									
Measured Depth (ft)	Inclination (°)	Azimuth (°)	Vertical Depth (ft)	+N/-S (ft)	+E/-W (ft)	Vertical Section (ft)	Dogleg Rate (°/100ft)	Build Rate (°/100ft)	Turn Rate (°/100ft)
0.00	0.00	0.00	0.00	0.00	0.00	0.00	0.00	0.00	0.00
100.00	0.00	0.00	100.00	0.00	0.00	0.00	0.00	0.00	0.00
200.00	0.00	0.00	200.00	0.00	0.00	0.00	0.00	0.00	0.00
300.00	0.00	0.00	300.00	0.00	0.00	0.00	0.00	0.00	0.00
400.00	0.00	0.00	400.00	0.00	0.00	0.00	0.00	0.00	0.00
500.00	0.00	0.00	500.00	0.00	0.00	0.00	0.00	0.00	0.00
Start Build 2.00									
600.00	2.00	108.95	599.98	-0.57	1.65	-0.30	2.00	2.00	0.00
700.00	4.00	108.95	699.84	-2.27	6.60	-1.20	2.00	2.00	0.00
800.00	6.00	108.95	799.45	-5.10	14.84	-2.69	2.00	2.00	0.00
900.00	8.00	108.95	898.70	-9.05	26.37	-4.79	2.00	2.00	0.00
1,000.00	10.00	108.95	997.47	-14.14	41.16	-7.47	2.00	2.00	0.00
1,100.00	12.00	108.95	1,095.62	-20.33	59.21	-10.75	2.00	2.00	0.00
1,200.00	14.00	108.95	1,193.06	-27.64	80.48	-14.61	2.00	2.00	0.00
1,300.00	16.00	108.95	1,289.64	-36.04	104.96	-19.06	2.00	2.00	0.00
1,400.00	18.00	108.95	1,385.27	-45.54	132.61	-24.08	2.00	2.00	0.00
1,454.81	19.10	108.95	1,437.23	-51.20	149.10	-27.07	2.00	2.00	0.00
1,479.12	19.10	108.95	1,460.20	-53.78	156.62	-28.44	0.00	0.00	0.00
Start 3921.48 hold at 1479.12 MD									
1,500.00	19.10	108.95	1,479.93	-56.00	163.08	-29.61	0.00	0.00	0.00
1,600.00	19.10	108.95	1,574.43	-66.63	194.03	-35.23	0.00	0.00	0.00
1,700.00	19.10	108.95	1,668.93	-77.25	224.97	-40.84	0.00	0.00	0.00
1,732.88	19.10	108.95	1,700.00	-80.75	235.14	-42.69	0.00	0.00	0.00
9 5/8"									
1,800.00	19.10	108.95	1,763.43	-87.88	255.91	-46.46	0.00	0.00	0.00
1,900.00	19.10	108.95	1,857.92	-98.51	286.85	-52.08	0.00	0.00	0.00
2,000.00	19.10	108.95	1,952.42	-109.13	317.79	-57.70	0.00	0.00	0.00
2,100.00	19.10	108.95	2,046.92	-119.76	348.74	-63.31	0.00	0.00	0.00
2,200.00	19.10	108.95	2,141.41	-130.38	379.68	-68.93	0.00	0.00	0.00
2,300.00	19.10	108.95	2,235.91	-141.01	410.62	-74.55	0.00	0.00	0.00
2,400.00	19.10	108.95	2,330.41	-151.63	441.56	-80.17	0.00	0.00	0.00
2,500.00	19.10	108.95	2,424.90	-162.26	472.50	-85.79	0.00	0.00	0.00
2,600.00	19.10	108.95	2,519.40	-172.88	503.45	-91.40	0.00	0.00	0.00
2,700.00	19.10	108.95	2,613.90	-183.51	534.39	-97.02	0.00	0.00	0.00
2,800.00	19.10	108.95	2,708.40	-194.13	565.33	-102.64	0.00	0.00	0.00
2,900.00	19.10	108.95	2,802.89	-204.76	596.27	-108.26	0.00	0.00	0.00
3,000.00	19.10	108.95	2,897.39	-215.39	627.21	-113.87	0.00	0.00	0.00
3,100.00	19.10	108.95	2,991.89	-226.01	658.16	-119.49	0.00	0.00	0.00
3,200.00	19.10	108.95	3,086.38	-236.64	689.10	-125.11	0.00	0.00	0.00
3,300.00	19.10	108.95	3,180.88	-247.26	720.04	-130.73	0.00	0.00	0.00
3,400.00	19.10	108.95	3,275.38	-257.89	750.98	-136.34	0.00	0.00	0.00
3,500.00	19.10	108.95	3,369.87	-268.51	781.92	-141.96	0.00	0.00	0.00
3,600.00	19.10	108.95	3,464.37	-279.14	812.87	-147.58	0.00	0.00	0.00
3,700.00	19.10	108.95	3,558.87	-289.76	843.81	-153.20	0.00	0.00	0.00
3,800.00	19.10	108.95	3,653.37	-300.39	874.75	-158.82	0.00	0.00	0.00
3,900.00	19.10	108.95	3,747.86	-311.02	905.69	-164.43	0.00	0.00	0.00
4,000.00	19.10	108.95	3,842.36	-321.64	936.63	-170.05	0.00	0.00	0.00
4,100.00	19.10	108.95	3,936.86	-332.27	967.58	-175.67	0.00	0.00	0.00
4,200.00	19.10	108.95	4,031.35	-342.89	998.52	-181.29	0.00	0.00	0.00
4,300.00	19.10	108.95	4,125.85	-353.52	1,029.46	-186.90	0.00	0.00	0.00
4,400.00	19.10	108.95	4,220.35	-364.14	1,060.40	-192.52	0.00	0.00	0.00
4,500.00	19.10	108.95	4,314.85	-374.77	1,091.34	-198.14	0.00	0.00	0.00
4,600.00	19.10	108.95	4,409.34	-385.39	1,122.29	-203.76	0.00	0.00	0.00

Database:	Casper District	Local Co-ordinate Reference:	Well Evans 24N-14B-L
Company:	Synergy Resources Corp.	TVD Reference:	GL 4940 & KB 20 @ 4960.00ft (PD 462)
Project:	Weld County, CO NAD 83	MD Reference:	GL 4940 & KB 20 @ 4960.00ft (PD 462)
Site:	Evans 7-26 Pad	North Reference:	True
Well:	Evans 24N-14B-L	Survey Calculation Method:	Minimum Curvature
Wellbore:	OH		
Design:	Plan #1		

Planned Survey									
Measured Depth (ft)	Inclination (°)	Azimuth (°)	Vertical Depth (ft)	+N/-S (ft)	+E/-W (ft)	Vertical Section (ft)	Dogleg Rate (°/100ft)	Build Rate (°/100ft)	Turn Rate (°/100ft)
4,700.00	19.10	108.95	4,503.84	-396.02	1,153.23	-209.37	0.00	0.00	0.00
4,800.00	19.10	108.95	4,598.34	-406.65	1,184.17	-214.99	0.00	0.00	0.00
4,900.00	19.10	108.95	4,692.83	-417.27	1,215.11	-220.61	0.00	0.00	0.00
5,000.00	19.10	108.95	4,787.33	-427.90	1,246.05	-226.23	0.00	0.00	0.00
5,100.00	19.10	108.95	4,881.83	-438.52	1,277.00	-231.84	0.00	0.00	0.00
5,200.00	19.10	108.95	4,976.32	-449.15	1,307.94	-237.46	0.00	0.00	0.00
5,300.00	19.10	108.95	5,070.82	-459.77	1,338.88	-243.08	0.00	0.00	0.00
5,400.00	19.10	108.95	5,165.32	-470.40	1,369.82	-248.70	0.00	0.00	0.00
5,400.60	19.10	108.95	5,165.88	-470.46	1,370.01	-248.73	0.00	0.00	0.00
Start Drop -2.00									
5,413.17	19.10	108.95	5,177.77	-471.80	1,373.90	-249.44	0.00	0.00	0.00
5,500.00	17.36	108.95	5,260.23	-480.62	1,399.58	-254.10	2.00	-2.00	0.00
5,600.00	15.36	108.95	5,356.18	-489.77	1,426.22	-258.94	2.00	-2.00	0.00
5,700.00	13.36	108.95	5,453.05	-497.82	1,449.68	-263.20	2.00	-2.00	0.00
5,800.00	11.36	108.95	5,550.73	-504.77	1,469.92	-266.87	2.00	-2.00	0.00
5,900.00	9.36	108.95	5,649.09	-510.61	1,486.93	-269.96	2.00	-2.00	0.00
6,000.00	7.36	108.95	5,748.03	-515.33	1,500.68	-272.46	2.00	-2.00	0.00
6,100.00	5.36	108.95	5,847.40	-518.93	1,511.15	-274.36	2.00	-2.00	0.00
6,200.00	3.36	108.95	5,947.11	-521.40	1,518.34	-275.66	2.00	-2.00	0.00
6,300.00	1.36	108.95	6,047.02	-522.74	1,522.24	-276.37	2.00	-2.00	0.00
6,367.99	0.00	0.00	6,115.00	-523.00	1,523.00	-276.51	2.00	-2.00	0.00
6,379.72	0.00	0.00	6,126.73	-523.00	1,523.00	-276.51	0.00	0.00	0.00
Start 604.13 hold at 6379.72 MD									
6,400.00	0.00	0.00	6,147.01	-523.00	1,523.00	-276.51	0.00	0.00	0.00
6,500.00	0.00	0.00	6,247.01	-523.00	1,523.00	-276.51	0.00	0.00	0.00
6,600.00	0.00	0.00	6,347.01	-523.00	1,523.00	-276.51	0.00	0.00	0.00
6,700.00	0.00	0.00	6,447.01	-523.00	1,523.00	-276.51	0.00	0.00	0.00
6,800.00	0.00	0.00	6,547.01	-523.00	1,523.00	-276.51	0.00	0.00	0.00
6,900.00	0.00	0.00	6,647.01	-523.00	1,523.00	-276.51	0.00	0.00	0.00
6,972.12	0.00	0.00	6,719.13	-523.00	1,523.00	-276.51	0.00	0.00	0.00
6,983.85	1.29	359.89	6,730.86	-522.87	1,523.00	-276.38	11.00	11.00	0.00
Start DLS 11.00 TFO 359.89									
7,000.00	3.07	359.89	6,747.00	-522.25	1,523.00	-275.77	11.00	11.00	0.00
7,100.00	14.07	359.89	6,845.73	-507.38	1,522.97	-261.09	11.00	11.00	0.00
7,200.00	25.07	359.89	6,939.81	-473.94	1,522.90	-228.08	11.00	11.00	0.00
7,300.00	36.07	359.89	7,025.78	-423.16	1,522.81	-177.95	11.00	11.00	0.00
7,400.00	47.07	359.89	7,100.49	-356.92	1,522.68	-112.55	11.00	11.00	0.00
7,500.00	58.07	359.89	7,161.18	-277.63	1,522.52	-34.28	11.00	11.00	0.00
7,600.00	69.07	359.89	7,205.62	-188.22	1,522.35	53.99	11.00	11.00	0.00
7,693.33	79.33	359.89	7,231.00	-98.54	1,522.18	142.52	11.00	11.00	0.00
Formation 2									
7,700.00	80.07	359.89	7,232.19	-91.98	1,522.16	149.00	11.00	11.00	0.00
7,790.80	90.05	359.89	7,240.00	-1.63	1,521.99	238.19	11.00	11.00	0.00
7,800.00	90.05	359.89	7,239.99	7.57	1,521.97	247.28	0.00	0.00	0.00
7,802.52	90.05	359.89	7,239.99	10.09	1,521.97	249.77	0.00	0.00	0.00
Start 9527.05 hold at 7802.52 MD									
7,900.00	90.05	359.89	7,239.90	107.57	1,521.78	346.00	0.00	0.00	0.00
8,000.00	90.05	359.89	7,239.80	207.57	1,521.58	444.72	0.00	0.00	0.00
8,100.00	90.05	359.89	7,239.71	307.57	1,521.39	543.44	0.00	0.00	0.00
8,200.00	90.05	359.89	7,239.61	407.57	1,521.20	642.16	0.00	0.00	0.00
8,300.00	90.05	359.89	7,239.51	507.57	1,521.00	740.88	0.00	0.00	0.00
8,400.00	90.05	359.89	7,239.42	607.57	1,520.81	839.60	0.00	0.00	0.00
8,500.00	90.05	359.89	7,239.32	707.57	1,520.62	938.32	0.00	0.00	0.00
8,600.00	90.05	359.89	7,239.23	807.57	1,520.42	1,037.04	0.00	0.00	0.00

Database:	Casper District	Local Co-ordinate Reference:	Well Evans 24N-14B-L
Company:	Synergy Resources Corp.	TVD Reference:	GL 4940 & KB 20 @ 4960.00ft (PD 462)
Project:	Weld County, CO NAD 83	MD Reference:	GL 4940 & KB 20 @ 4960.00ft (PD 462)
Site:	Evans 7-26 Pad	North Reference:	True
Well:	Evans 24N-14B-L	Survey Calculation Method:	Minimum Curvature
Wellbore:	OH		
Design:	Plan #1		

Planned Survey									
Measured Depth (ft)	Inclination (°)	Azimuth (°)	Vertical Depth (ft)	+N/-S (ft)	+E/-W (ft)	Vertical Section (ft)	Dogleg Rate (°/100ft)	Build Rate (°/100ft)	Turn Rate (°/100ft)
8,700.00	90.05	359.89	7,239.13	907.57	1,520.23	1,135.76	0.00	0.00	0.00
8,800.00	90.05	359.89	7,239.04	1,007.57	1,520.03	1,234.48	0.00	0.00	0.00
8,900.00	90.05	359.89	7,238.94	1,107.57	1,519.84	1,333.20	0.00	0.00	0.00
9,000.00	90.05	359.89	7,238.85	1,207.57	1,519.65	1,431.92	0.00	0.00	0.00
9,100.00	90.05	359.89	7,238.75	1,307.57	1,519.45	1,530.64	0.00	0.00	0.00
9,200.00	90.05	359.89	7,238.66	1,407.57	1,519.26	1,629.36	0.00	0.00	0.00
9,300.00	90.05	359.89	7,238.56	1,507.57	1,519.07	1,728.08	0.00	0.00	0.00
9,400.00	90.05	359.89	7,238.46	1,607.57	1,518.87	1,826.80	0.00	0.00	0.00
9,500.00	90.05	359.89	7,238.37	1,707.57	1,518.68	1,925.52	0.00	0.00	0.00
9,600.00	90.05	359.89	7,238.27	1,807.57	1,518.48	2,024.24	0.00	0.00	0.00
9,700.00	90.05	359.89	7,238.18	1,907.57	1,518.29	2,122.96	0.00	0.00	0.00
9,800.00	90.05	359.89	7,238.08	2,007.57	1,518.10	2,221.68	0.00	0.00	0.00
9,900.00	90.05	359.89	7,237.99	2,107.57	1,517.90	2,320.40	0.00	0.00	0.00
10,000.00	90.05	359.89	7,237.89	2,207.57	1,517.71	2,419.12	0.00	0.00	0.00
10,100.00	90.05	359.89	7,237.80	2,307.57	1,517.51	2,517.84	0.00	0.00	0.00
10,200.00	90.05	359.89	7,237.70	2,407.57	1,517.32	2,616.56	0.00	0.00	0.00
10,300.00	90.05	359.89	7,237.60	2,507.57	1,517.13	2,715.28	0.00	0.00	0.00
10,400.00	90.05	359.89	7,237.51	2,607.57	1,516.93	2,814.00	0.00	0.00	0.00
10,500.00	90.05	359.89	7,237.41	2,707.57	1,516.74	2,912.72	0.00	0.00	0.00
10,600.00	90.05	359.89	7,237.32	2,807.57	1,516.55	3,011.44	0.00	0.00	0.00
10,700.00	90.05	359.89	7,237.22	2,907.57	1,516.35	3,110.16	0.00	0.00	0.00
10,800.00	90.05	359.89	7,237.13	3,007.57	1,516.16	3,208.88	0.00	0.00	0.00
10,900.00	90.05	359.89	7,237.03	3,107.56	1,515.96	3,307.60	0.00	0.00	0.00
11,000.00	90.05	359.89	7,236.94	3,207.56	1,515.77	3,406.32	0.00	0.00	0.00
11,100.00	90.05	359.89	7,236.84	3,307.56	1,515.58	3,505.04	0.00	0.00	0.00
11,200.00	90.05	359.89	7,236.75	3,407.56	1,515.38	3,603.76	0.00	0.00	0.00
11,300.00	90.05	359.89	7,236.65	3,507.56	1,515.19	3,702.48	0.00	0.00	0.00
11,400.00	90.05	359.89	7,236.55	3,607.56	1,515.00	3,801.20	0.00	0.00	0.00
11,500.00	90.05	359.89	7,236.46	3,707.56	1,514.80	3,899.92	0.00	0.00	0.00
11,600.00	90.05	359.89	7,236.36	3,807.56	1,514.61	3,998.64	0.00	0.00	0.00
11,700.00	90.05	359.89	7,236.27	3,907.56	1,514.41	4,097.36	0.00	0.00	0.00
11,800.00	90.05	359.89	7,236.17	4,007.56	1,514.22	4,196.08	0.00	0.00	0.00
11,900.00	90.05	359.89	7,236.08	4,107.56	1,514.03	4,294.80	0.00	0.00	0.00
12,000.00	90.05	359.89	7,235.98	4,207.56	1,513.83	4,393.52	0.00	0.00	0.00
12,100.00	90.05	359.89	7,235.89	4,307.56	1,513.64	4,492.24	0.00	0.00	0.00
12,200.00	90.05	359.89	7,235.79	4,407.56	1,513.45	4,590.97	0.00	0.00	0.00
12,300.00	90.05	359.89	7,235.70	4,507.56	1,513.25	4,689.69	0.00	0.00	0.00
12,400.00	90.05	359.89	7,235.60	4,607.56	1,513.06	4,788.41	0.00	0.00	0.00
12,500.00	90.05	359.89	7,235.50	4,707.56	1,512.86	4,887.13	0.00	0.00	0.00
12,600.00	90.05	359.89	7,235.41	4,807.56	1,512.67	4,985.85	0.00	0.00	0.00
12,700.00	90.05	359.89	7,235.31	4,907.56	1,512.48	5,084.57	0.00	0.00	0.00
12,800.00	90.05	359.89	7,235.22	5,007.56	1,512.28	5,183.29	0.00	0.00	0.00
12,900.00	90.05	359.89	7,235.12	5,107.56	1,512.09	5,282.01	0.00	0.00	0.00
13,000.00	90.05	359.89	7,235.03	5,207.56	1,511.90	5,380.73	0.00	0.00	0.00
13,100.00	90.05	359.89	7,234.93	5,307.56	1,511.70	5,479.45	0.00	0.00	0.00
13,200.00	90.05	359.89	7,234.84	5,407.56	1,511.51	5,578.17	0.00	0.00	0.00
13,300.00	90.05	359.89	7,234.74	5,507.56	1,511.31	5,676.89	0.00	0.00	0.00
13,400.00	90.05	359.89	7,234.64	5,607.56	1,511.12	5,775.61	0.00	0.00	0.00
13,500.00	90.05	359.89	7,234.55	5,707.56	1,510.93	5,874.33	0.00	0.00	0.00
13,600.00	90.05	359.89	7,234.45	5,807.56	1,510.73	5,973.05	0.00	0.00	0.00
13,700.00	90.05	359.89	7,234.36	5,907.56	1,510.54	6,071.77	0.00	0.00	0.00
13,800.00	90.05	359.89	7,234.26	6,007.56	1,510.34	6,170.49	0.00	0.00	0.00
13,900.00	90.05	359.89	7,234.17	6,107.56	1,510.15	6,269.21	0.00	0.00	0.00
14,000.00	90.05	359.89	7,234.07	6,207.56	1,509.96	6,367.93	0.00	0.00	0.00

Database:	Casper District	Local Co-ordinate Reference:	Well Evans 24N-14B-L
Company:	Synergy Resources Corp.	TVD Reference:	GL 4940 & KB 20 @ 4960.00ft (PD 462)
Project:	Weld County, CO NAD 83	MD Reference:	GL 4940 & KB 20 @ 4960.00ft (PD 462)
Site:	Evans 7-26 Pad	North Reference:	True
Well:	Evans 24N-14B-L	Survey Calculation Method:	Minimum Curvature
Wellbore:	OH		
Design:	Plan #1		

Planned Survey									
Measured Depth (ft)	Inclination (°)	Azimuth (°)	Vertical Depth (ft)	+N/-S (ft)	+E/-W (ft)	Vertical Section (ft)	Dogleg Rate (°/100ft)	Build Rate (°/100ft)	Turn Rate (°/100ft)
14,100.00	90.05	359.89	7,233.98	6,307.56	1,509.76	6,466.65	0.00	0.00	0.00
14,200.00	90.05	359.89	7,233.88	6,407.56	1,509.57	6,565.37	0.00	0.00	0.00
14,300.00	90.05	359.89	7,233.79	6,507.56	1,509.38	6,664.09	0.00	0.00	0.00
14,400.00	90.05	359.89	7,233.69	6,607.56	1,509.18	6,762.81	0.00	0.00	0.00
14,500.00	90.05	359.89	7,233.59	6,707.56	1,508.99	6,861.53	0.00	0.00	0.00
14,600.00	90.05	359.89	7,233.50	6,807.56	1,508.79	6,960.25	0.00	0.00	0.00
14,700.00	90.05	359.89	7,233.40	6,907.56	1,508.60	7,058.97	0.00	0.00	0.00
14,800.00	90.05	359.89	7,233.31	7,007.56	1,508.41	7,157.69	0.00	0.00	0.00
14,900.00	90.05	359.89	7,233.21	7,107.56	1,508.21	7,256.41	0.00	0.00	0.00
15,000.00	90.05	359.89	7,233.12	7,207.56	1,508.02	7,355.13	0.00	0.00	0.00
15,100.00	90.05	359.89	7,233.02	7,307.56	1,507.83	7,453.85	0.00	0.00	0.00
15,200.00	90.05	359.89	7,232.93	7,407.55	1,507.63	7,552.57	0.00	0.00	0.00
15,300.00	90.05	359.89	7,232.83	7,507.55	1,507.44	7,651.29	0.00	0.00	0.00
15,400.00	90.05	359.89	7,232.74	7,607.55	1,507.24	7,750.01	0.00	0.00	0.00
15,500.00	90.05	359.89	7,232.64	7,707.55	1,507.05	7,848.73	0.00	0.00	0.00
15,600.00	90.05	359.89	7,232.54	7,807.55	1,506.86	7,947.45	0.00	0.00	0.00
15,700.00	90.05	359.89	7,232.45	7,907.55	1,506.66	8,046.17	0.00	0.00	0.00
15,800.00	90.05	359.89	7,232.35	8,007.55	1,506.47	8,144.89	0.00	0.00	0.00
15,900.00	90.05	359.89	7,232.26	8,107.55	1,506.28	8,243.61	0.00	0.00	0.00
16,000.00	90.05	359.89	7,232.16	8,207.55	1,506.08	8,342.33	0.00	0.00	0.00
16,100.00	90.05	359.89	7,232.07	8,307.55	1,505.89	8,441.05	0.00	0.00	0.00
16,200.00	90.05	359.89	7,231.97	8,407.55	1,505.69	8,539.77	0.00	0.00	0.00
16,300.00	90.05	359.89	7,231.88	8,507.55	1,505.50	8,638.49	0.00	0.00	0.00
16,400.00	90.05	359.89	7,231.78	8,607.55	1,505.31	8,737.21	0.00	0.00	0.00
16,500.00	90.05	359.89	7,231.68	8,707.55	1,505.11	8,835.93	0.00	0.00	0.00
16,600.00	90.05	359.89	7,231.59	8,807.55	1,504.92	8,934.65	0.00	0.00	0.00
16,700.00	90.05	359.89	7,231.49	8,907.55	1,504.73	9,033.38	0.00	0.00	0.00
16,800.00	90.05	359.89	7,231.40	9,007.55	1,504.53	9,132.10	0.00	0.00	0.00
16,900.00	90.05	359.89	7,231.30	9,107.55	1,504.34	9,230.82	0.00	0.00	0.00
17,000.00	90.05	359.89	7,231.21	9,207.55	1,504.14	9,329.54	0.00	0.00	0.00
17,100.00	90.05	359.89	7,231.11	9,307.55	1,503.95	9,428.26	0.00	0.00	0.00
17,200.00	90.05	359.89	7,231.02	9,407.55	1,503.76	9,526.98	0.00	0.00	0.00
17,217.23	90.05	359.89	7,231.00	9,424.78	1,503.72	9,543.98	0.00	0.00	0.00
24N-14B-L(460 FNL1047)PBHL									

Design Targets									
Target Name	Dip Angle (°)	Dip Dir. (°)	TVD (ft)	+N/-S (ft)	+E/-W (ft)	Northing (usft)	Easting (usft)	Latitude	Longitude
24N-14B-L(460 FNL1047) - hit/miss target - Shape - plan hits target center - Point	0.00	0.00	7,231.00	9,424.78	1,503.72	1,388,771.10	3,212,029.72	40.3980800	-104.7387130

Casing Points					
Measured Depth (ft)	Vertical Depth (ft)	Name	Casing Diameter (in)	Hole Diameter (in)	
1,732.88	1,700.00	9 5/8"	9.625	13.500	

Database:	Casper District	Local Co-ordinate Reference:	Well Evans 24N-14B-L
Company:	Synergy Resources Corp.	TVD Reference:	GL 4940 & KB 20 @ 4960.00ft (PD 462)
Project:	Weld County, CO NAD 83	MD Reference:	GL 4940 & KB 20 @ 4960.00ft (PD 462)
Site:	Evans 7-26 Pad	North Reference:	True
Well:	Evans 24N-14B-L	Survey Calculation Method:	Minimum Curvature
Wellbore:	OH		
Design:	Plan #1		

Formations					
Measured Depth (ft)	Vertical Depth (ft)	Name	Lithology	Dip (°)	Dip Direction (°)
7,693.33	7,231.00	Formation 2		0.00	

Plan Annotations					
Measured Depth (ft)	Vertical Depth (ft)	Local Coordinates			
		+N/-S (ft)	+E/-W (ft)	Comment	
500.00	500.00	0.00	0.00	Start Build 2.00	
1,479.12	1,460.20	-53.78	156.62	Start 3921.48 hold at 1479.12 MD	
5,400.60	5,165.88	-470.46	1,370.01	Start Drop -2.00	
6,379.72	6,126.73	-523.00	1,523.00	Start 604.13 hold at 6379.72 MD	
6,983.85	6,730.86	-522.87	1,523.00	Start DLS 11.00 TFO 359.89	
7,802.52	7,239.99	10.09	1,521.97	Start 9527.05 hold at 7802.52 MD	
17,329.57				TD at 17329.57	