



PROJECT DETAILS: Weld County, CO NAD 83

Geodetic System: US State Plane 1983
Datum: North American Datum 1983
Ellipsoid: GRS 1980
Zone: Colorado Northern Zone
System Datum: Mean Sea Level
Local North: True

Project: Weld County, CO NAD 83
Site: Evans 7-26 Pad
Well: Evans 9N-14C-L
Wellbore: OH
Design: Plan #1



Azimuths to True North
Magnetic North: 8.48°



Magnetic Field
Strength: 52529.4snT
Dip Angle: 66.93°
Date: 3/9/2016
Model: BGGM2015

SECTION DETAILS

MD	Inc	Azi	TVD	+N/-S	+E/-W	Dleg	TFace	VSect
0.00	0.00	0.00	0.00	0.00	0.00	0.00	0.00	0.00
300.00	0.00	0.00	300.00	0.00	0.00	0.00	0.00	0.00
1443.45	22.87	107.68	1413.33	-68.37	214.55	2.00	107.68	-24.97
5430.16	22.87	107.68	5086.67	-538.82	1690.74	0.00	0.00	-196.77
6573.61	0.00	0.00	6200.00	-607.19	1905.29	2.00	180.00	-221.74
7154.74	0.00	0.00	6781.13	-607.19	1905.29	0.00	0.00	-221.74
7972.92	90.00	359.89	7302.00	-86.32	1904.30	11.00	359.89	288.82
17489.89	90.00	359.89	7302.00	9430.63	1886.13	0.00	0.00	9617.40

DESIGN TARGET DETAILS

Name	TVD	+N/-S	+E/-W	Northing	Easting	Latitude	Longitude	Shape
PBHL	7302.00	9430.63	1886.13	1388760.18	3212412.23	40.3980410	-104.7373400	Point
- plan hits target center								

WELL DETAILS: Evans 9N-14C-L

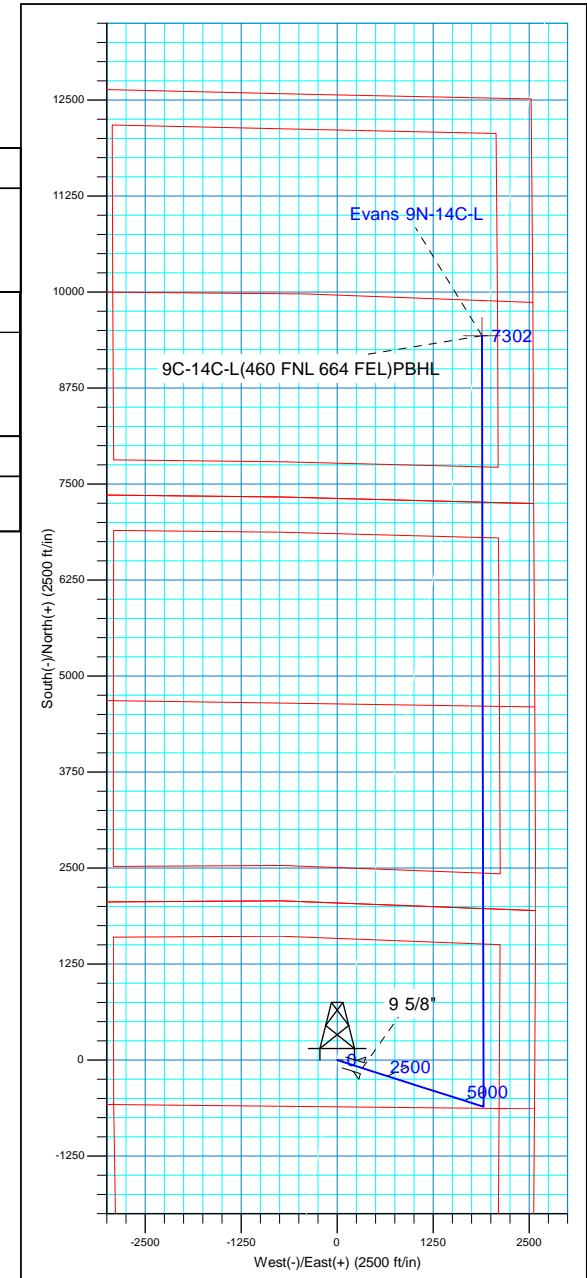
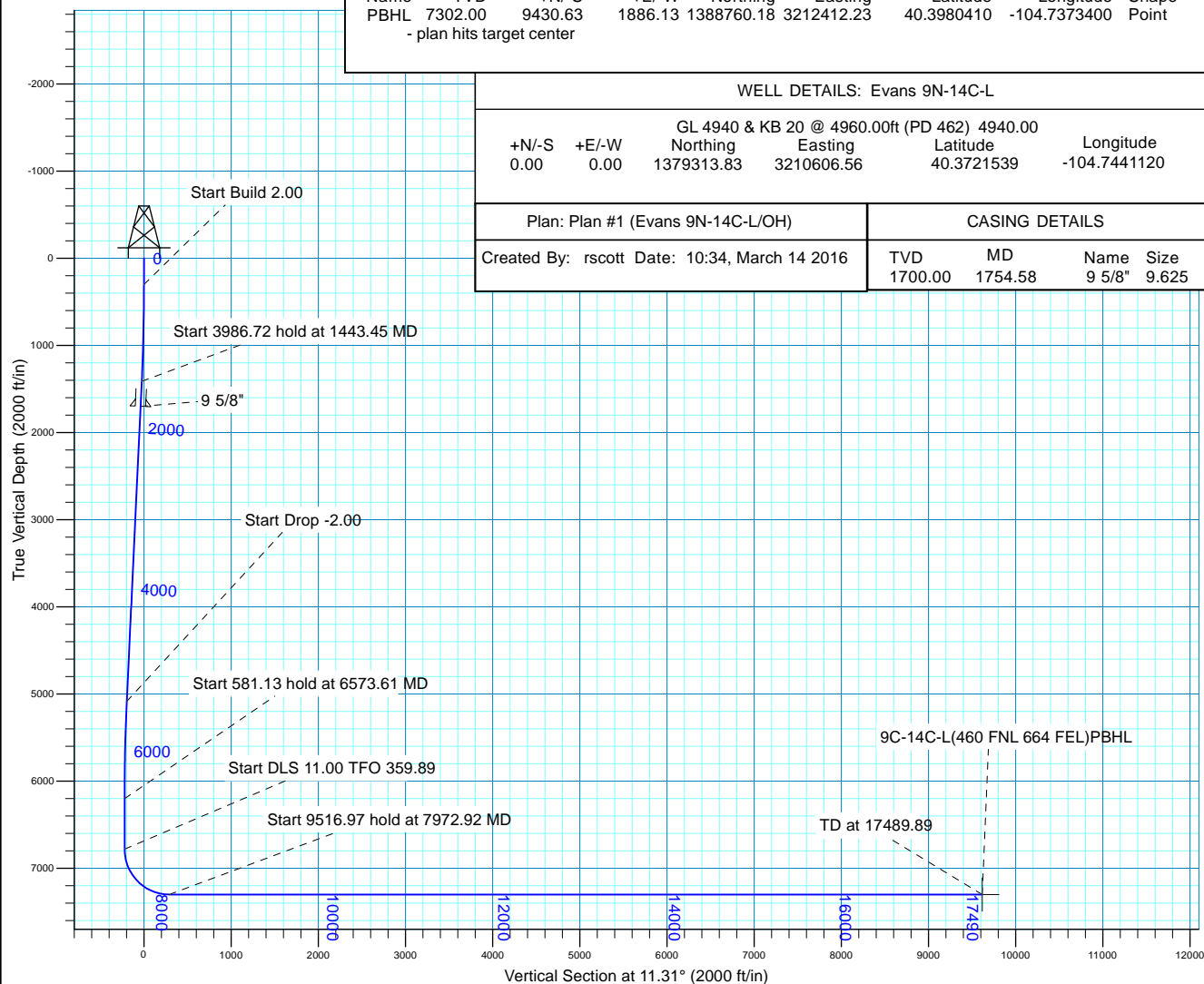
		GL 4940 & KB 20 @ 4960.00ft (PD 462)		4940.00	
+N/-S	+E/-W	Northing	Easting	Latitude	Longitude
0.00	0.00	1379313.83	3210606.56	40.3721539	-104.7441120

Plan: Plan #1 (Evans 9N-14C-L/OH)

CASING DETAILS

Created By: rscott Date: 10:34, March 14 2016

TVD	MD	Name	Size
1700.00	1754.58	9 5/8"	9.625





Synergy Resources Corp.

Weld County, CO NAD 83

Evans 7-26 Pad

Evans 9N-14C-L

OH

Plan: Plan #1

Standard Planning Report

13 March, 2016



Database:	Casper District	Local Co-ordinate Reference:	Well Evans 9N-14C-L
Company:	Synergy Resources Corp.	TVD Reference:	GL 4940 & KB 20 @ 4960.00ft (PD 462)
Project:	Weld County, CO NAD 83	MD Reference:	GL 4940 & KB 20 @ 4960.00ft (PD 462)
Site:	Evans 7-26 Pad	North Reference:	True
Well:	Evans 9N-14C-L	Survey Calculation Method:	Minimum Curvature
Wellbore:	OH		
Design:	Plan #1		

Project	Weld County, CO NAD 83		
Map System:	US State Plane 1983	System Datum:	Mean Sea Level
Geo Datum:	North American Datum 1983		
Map Zone:	Colorado Northern Zone		

Site	Evans 7-26 Pad, SECTION 26 T5N R66W				
Site Position:		Northing:	1,379,289.48 usft	Latitude:	40.3720970
From:	Lat/Long	Easting:	3,210,182.68 usft	Longitude:	-104.7456340
Position Uncertainty:	3.28 ft	Slot Radius:	13.200 in	Grid Convergence:	0.49 °

Well	Evans 9N-14C-L, 2045 FNL 2574 FEL					
Well Position	+N/-S	20.75 ft	Northing:	1,379,313.83 usft	Latitude:	40.3721540
	+E/-W	424.07 ft	Easting:	3,210,606.56 usft	Longitude:	-104.7441120
Position Uncertainty		3.28 ft	Wellhead Elevation:	0.00 ft	Ground Level:	4,940.00 ft

Wellbore	OH				
Magnetics	Model Name	Sample Date	Declination (°)	Dip Angle (°)	Field Strength (nT)
	BGGM2015	3/9/2016	8.48	66.93	52,529

Design	Plan #1			
Audit Notes:				
Version:	Phase:	PLAN	Tie On Depth:	0.00
Vertical Section:	Depth From (TVD) (ft)	+N/-S (ft)	+E/-W (ft)	Direction (°)
	0.00	0.00	0.00	11.31

Plan Sections										
Measured Depth (ft)	Inclination (°)	Azimuth (°)	Vertical Depth (ft)	+N/-S (ft)	+E/-W (ft)	Dogleg Rate (°/100ft)	Build Rate (°/100ft)	Turn Rate (°/100ft)	TFO (°)	Target
0.00	0.00	0.00	0.00	0.00	0.00	0.00	0.00	0.00	0.00	
300.00	0.00	0.00	300.00	0.00	0.00	0.00	0.00	0.00	0.00	
1,443.45	22.87	107.68	1,413.33	-68.37	214.55	2.00	2.00	0.00	107.68	
5,430.16	22.87	107.68	5,086.67	-538.82	1,690.74	0.00	0.00	0.00	0.00	
6,573.61	0.00	0.00	6,200.00	-607.19	1,905.29	2.00	-2.00	0.00	180.00	
7,154.74	0.00	0.00	6,781.13	-607.19	1,905.29	0.00	0.00	0.00	0.00	
7,972.92	90.00	359.89	7,302.00	-86.32	1,904.30	11.00	11.00	-0.01	359.89	
17,489.89	90.00	359.89	7,302.00	9,430.63	1,886.13	0.00	0.00	0.00	0.00	9C-14C-L(460 FNL 66

Database:	Casper District	Local Co-ordinate Reference:	Well Evans 9N-14C-L
Company:	Synergy Resources Corp.	TVD Reference:	GL 4940 & KB 20 @ 4960.00ft (PD 462)
Project:	Weld County, CO NAD 83	MD Reference:	GL 4940 & KB 20 @ 4960.00ft (PD 462)
Site:	Evans 7-26 Pad	North Reference:	True
Well:	Evans 9N-14C-L	Survey Calculation Method:	Minimum Curvature
Wellbore:	OH		
Design:	Plan #1		

Planned Survey									
Measured Depth (ft)	Inclination (°)	Azimuth (°)	Vertical Depth (ft)	+N/-S (ft)	+E/-W (ft)	Vertical Section (ft)	Dogleg Rate (°/100ft)	Build Rate (°/100ft)	Turn Rate (°/100ft)
0.00	0.00	0.00	0.00	0.00	0.00	0.00	0.00	0.00	0.00
100.00	0.00	0.00	100.00	0.00	0.00	0.00	0.00	0.00	0.00
200.00	0.00	0.00	200.00	0.00	0.00	0.00	0.00	0.00	0.00
300.00	0.00	0.00	300.00	0.00	0.00	0.00	0.00	0.00	0.00
Start Build 2.00									
400.00	2.00	107.68	399.98	-0.53	1.66	-0.19	2.00	2.00	0.00
500.00	4.00	107.68	499.84	-2.12	6.65	-0.77	2.00	2.00	0.00
600.00	6.00	107.68	599.45	-4.77	14.95	-1.74	2.00	2.00	0.00
700.00	8.00	107.68	698.70	-8.47	26.56	-3.09	2.00	2.00	0.00
800.00	10.00	107.68	797.47	-13.22	41.47	-4.83	2.00	2.00	0.00
900.00	12.00	107.68	895.62	-19.01	59.65	-6.94	2.00	2.00	0.00
1,000.00	14.00	107.68	993.06	-25.84	81.08	-9.44	2.00	2.00	0.00
1,100.00	16.00	107.68	1,089.64	-33.70	105.74	-12.31	2.00	2.00	0.00
1,200.00	18.00	107.68	1,185.27	-42.57	133.59	-15.55	2.00	2.00	0.00
1,300.00	20.00	107.68	1,279.82	-52.46	164.61	-19.16	2.00	2.00	0.00
1,400.00	22.00	107.68	1,373.17	-63.34	198.75	-23.13	2.00	2.00	0.00
1,443.45	22.87	107.68	1,413.33	-68.37	214.55	-24.97	2.00	2.00	0.00
Start 3986.72 hold at 1443.45 MD									
1,500.00	22.87	107.68	1,465.43	-75.05	235.49	-27.41	0.00	0.00	0.00
1,600.00	22.87	107.68	1,557.57	-86.85	272.52	-31.72	0.00	0.00	0.00
1,700.00	22.87	107.68	1,649.71	-98.65	309.55	-36.03	0.00	0.00	0.00
1,754.58	22.87	107.68	1,700.00	-105.09	329.76	-38.38	0.00	0.00	0.00
9 5/8"									
1,800.00	22.87	107.68	1,741.85	-110.45	346.57	-40.33	0.00	0.00	0.00
1,900.00	22.87	107.68	1,833.99	-122.25	383.60	-44.64	0.00	0.00	0.00
2,000.00	22.87	107.68	1,926.13	-134.05	420.63	-48.95	0.00	0.00	0.00
2,100.00	22.87	107.68	2,018.27	-145.85	457.66	-53.26	0.00	0.00	0.00
2,200.00	22.87	107.68	2,110.41	-157.65	494.69	-57.57	0.00	0.00	0.00
2,300.00	22.87	107.68	2,202.55	-169.45	531.71	-61.88	0.00	0.00	0.00
2,400.00	22.87	107.68	2,294.69	-181.25	568.74	-66.19	0.00	0.00	0.00
2,500.00	22.87	107.68	2,386.83	-193.05	605.77	-70.50	0.00	0.00	0.00
2,600.00	22.87	107.68	2,478.97	-204.85	642.80	-74.81	0.00	0.00	0.00
2,700.00	22.87	107.68	2,571.11	-216.65	679.82	-79.12	0.00	0.00	0.00
2,800.00	22.87	107.68	2,663.25	-228.45	716.85	-83.43	0.00	0.00	0.00
2,900.00	22.87	107.68	2,755.39	-240.25	753.88	-87.74	0.00	0.00	0.00
3,000.00	22.87	107.68	2,847.53	-252.05	790.91	-92.05	0.00	0.00	0.00
3,100.00	22.87	107.68	2,939.67	-263.85	827.93	-96.36	0.00	0.00	0.00
3,200.00	22.87	107.68	3,031.81	-275.65	864.96	-100.67	0.00	0.00	0.00
3,300.00	22.87	107.68	3,123.95	-287.45	901.99	-104.97	0.00	0.00	0.00
3,400.00	22.87	107.68	3,216.09	-299.25	939.02	-109.28	0.00	0.00	0.00
3,500.00	22.87	107.68	3,308.23	-311.05	976.04	-113.59	0.00	0.00	0.00
3,600.00	22.87	107.68	3,400.37	-322.85	1,013.07	-117.90	0.00	0.00	0.00
3,700.00	22.87	107.68	3,492.51	-334.65	1,050.10	-122.21	0.00	0.00	0.00
3,800.00	22.87	107.68	3,584.65	-346.45	1,087.13	-126.52	0.00	0.00	0.00
3,900.00	22.87	107.68	3,676.79	-358.25	1,124.16	-130.83	0.00	0.00	0.00
4,000.00	22.87	107.68	3,768.93	-370.05	1,161.18	-135.14	0.00	0.00	0.00
4,100.00	22.87	107.68	3,861.07	-381.85	1,198.21	-139.45	0.00	0.00	0.00
4,200.00	22.87	107.68	3,953.20	-393.65	1,235.24	-143.76	0.00	0.00	0.00
4,300.00	22.87	107.68	4,045.34	-405.45	1,272.27	-148.07	0.00	0.00	0.00
4,400.00	22.87	107.68	4,137.48	-417.25	1,309.29	-152.38	0.00	0.00	0.00
4,500.00	22.87	107.68	4,229.62	-429.05	1,346.32	-156.69	0.00	0.00	0.00
4,600.00	22.87	107.68	4,321.76	-440.85	1,383.35	-161.00	0.00	0.00	0.00
4,700.00	22.87	107.68	4,413.90	-452.65	1,420.38	-165.31	0.00	0.00	0.00

Database:	Casper District	Local Co-ordinate Reference:	Well Evans 9N-14C-L
Company:	Synergy Resources Corp.	TVD Reference:	GL 4940 & KB 20 @ 4960.00ft (PD 462)
Project:	Weld County, CO NAD 83	MD Reference:	GL 4940 & KB 20 @ 4960.00ft (PD 462)
Site:	Evans 7-26 Pad	North Reference:	True
Well:	Evans 9N-14C-L	Survey Calculation Method:	Minimum Curvature
Wellbore:	OH		
Design:	Plan #1		

Planned Survey									
Measured Depth (ft)	Inclination (°)	Azimuth (°)	Vertical Depth (ft)	+N/-S (ft)	+E/-W (ft)	Vertical Section (ft)	Dogleg Rate (°/100ft)	Build Rate (°/100ft)	Turn Rate (°/100ft)
4,800.00	22.87	107.68	4,506.04	-464.45	1,457.40	-169.61	0.00	0.00	0.00
4,900.00	22.87	107.68	4,598.18	-476.25	1,494.43	-173.92	0.00	0.00	0.00
5,000.00	22.87	107.68	4,690.32	-488.06	1,531.46	-178.23	0.00	0.00	0.00
5,100.00	22.87	107.68	4,782.46	-499.86	1,568.49	-182.54	0.00	0.00	0.00
5,200.00	22.87	107.68	4,874.60	-511.66	1,605.51	-186.85	0.00	0.00	0.00
5,300.00	22.87	107.68	4,966.74	-523.46	1,642.54	-191.16	0.00	0.00	0.00
5,400.00	22.87	107.68	5,058.88	-535.26	1,679.57	-195.47	0.00	0.00	0.00
5,430.16	22.87	107.68	5,086.67	-538.82	1,690.74	-196.77	0.00	0.00	0.00
Start Drop -2.00									
5,500.00	21.47	107.68	5,151.34	-546.82	1,715.85	-199.69	2.00	-2.00	0.00
5,600.00	19.47	107.68	5,245.02	-557.44	1,749.17	-203.57	2.00	-2.00	0.00
5,700.00	17.47	107.68	5,339.87	-567.06	1,779.36	-207.08	2.00	-2.00	0.00
5,800.00	15.47	107.68	5,435.76	-575.67	1,806.37	-210.23	2.00	-2.00	0.00
5,900.00	13.47	107.68	5,532.58	-583.25	1,830.18	-213.00	2.00	-2.00	0.00
6,000.00	11.47	107.68	5,630.21	-589.81	1,850.76	-215.39	2.00	-2.00	0.00
6,100.00	9.47	107.68	5,728.54	-595.33	1,868.07	-217.41	2.00	-2.00	0.00
6,200.00	7.47	107.68	5,827.45	-599.80	1,882.11	-219.04	2.00	-2.00	0.00
6,300.00	5.47	107.68	5,926.81	-603.23	1,892.85	-220.29	2.00	-2.00	0.00
6,400.00	3.47	107.68	6,026.50	-605.59	1,900.28	-221.16	2.00	-2.00	0.00
6,500.00	1.47	107.68	6,126.40	-606.90	1,904.39	-221.64	2.00	-2.00	0.00
6,573.61	0.00	0.00	6,200.00	-607.19	1,905.29	-221.74	2.00	-2.00	0.00
Start 581.13 hold at 6573.61 MD									
6,600.00	0.00	0.00	6,226.39	-607.19	1,905.29	-221.74	0.00	0.00	0.00
6,700.00	0.00	0.00	6,326.39	-607.19	1,905.29	-221.74	0.00	0.00	0.00
6,800.00	0.00	0.00	6,426.39	-607.19	1,905.29	-221.74	0.00	0.00	0.00
6,900.00	0.00	0.00	6,526.39	-607.19	1,905.29	-221.74	0.00	0.00	0.00
7,000.00	0.00	0.00	6,626.39	-607.19	1,905.29	-221.74	0.00	0.00	0.00
7,100.00	0.00	0.00	6,726.39	-607.19	1,905.29	-221.74	0.00	0.00	0.00
7,154.74	0.00	0.00	6,781.13	-607.19	1,905.29	-221.74	0.00	0.00	0.00
Start DLS 11.00 TFO 359.89									
7,200.00	4.98	359.89	6,826.33	-605.22	1,905.29	-219.81	11.00	11.00	0.00
7,300.00	15.98	359.89	6,924.51	-587.07	1,905.25	-202.01	11.00	11.00	0.00
7,400.00	26.98	359.89	7,017.43	-550.51	1,905.18	-166.18	11.00	11.00	0.00
7,500.00	37.98	359.89	7,101.66	-496.89	1,905.08	-113.62	11.00	11.00	0.00
7,600.00	48.98	359.89	7,174.11	-428.19	1,904.95	-46.28	11.00	11.00	0.00
7,700.00	59.98	359.89	7,232.12	-346.92	1,904.79	33.37	11.00	11.00	0.00
7,800.00	70.98	359.89	7,273.56	-256.08	1,904.62	122.42	11.00	11.00	0.00
7,900.00	81.98	359.89	7,296.90	-159.00	1,904.43	217.57	11.00	11.00	0.00
7,972.92	90.00	359.89	7,302.00	-86.32	1,904.30	288.82	11.00	11.00	0.00
Start 9516.97 hold at 7972.92 MD									
8,000.00	90.00	359.89	7,302.00	-59.24	1,904.24	315.36	0.00	0.00	0.00
8,100.00	90.00	359.89	7,302.00	40.76	1,904.05	413.38	0.00	0.00	0.00
8,200.00	90.00	359.89	7,302.00	140.76	1,903.86	511.40	0.00	0.00	0.00
8,300.00	90.00	359.89	7,302.00	240.76	1,903.67	609.42	0.00	0.00	0.00
8,400.00	90.00	359.89	7,302.00	340.76	1,903.48	707.44	0.00	0.00	0.00
8,500.00	90.00	359.89	7,302.00	440.76	1,903.29	805.46	0.00	0.00	0.00
8,600.00	90.00	359.89	7,302.00	540.76	1,903.10	903.48	0.00	0.00	0.00
8,700.00	90.00	359.89	7,302.00	640.76	1,902.91	1,001.50	0.00	0.00	0.00
8,800.00	90.00	359.89	7,302.00	740.76	1,902.72	1,099.53	0.00	0.00	0.00
8,900.00	90.00	359.89	7,302.00	840.76	1,902.53	1,197.55	0.00	0.00	0.00
9,000.00	90.00	359.89	7,302.00	940.76	1,902.34	1,295.57	0.00	0.00	0.00
9,100.00	90.00	359.89	7,302.00	1,040.76	1,902.14	1,393.59	0.00	0.00	0.00
9,200.00	90.00	359.89	7,302.00	1,140.76	1,901.95	1,491.61	0.00	0.00	0.00
9,300.00	90.00	359.89	7,302.00	1,240.75	1,901.76	1,589.63	0.00	0.00	0.00

Database:	Casper District	Local Co-ordinate Reference:	Well Evans 9N-14C-L
Company:	Synergy Resources Corp.	TVD Reference:	GL 4940 & KB 20 @ 4960.00ft (PD 462)
Project:	Weld County, CO NAD 83	MD Reference:	GL 4940 & KB 20 @ 4960.00ft (PD 462)
Site:	Evans 7-26 Pad	North Reference:	True
Well:	Evans 9N-14C-L	Survey Calculation Method:	Minimum Curvature
Wellbore:	OH		
Design:	Plan #1		

Planned Survey									
Measured Depth (ft)	Inclination (°)	Azimuth (°)	Vertical Depth (ft)	+N/-S (ft)	+E/-W (ft)	Vertical Section (ft)	Dogleg Rate (°/100ft)	Build Rate (°/100ft)	Turn Rate (°/100ft)
9,400.00	90.00	359.89	7,302.00	1,340.75	1,901.57	1,687.65	0.00	0.00	0.00
9,500.00	90.00	359.89	7,302.00	1,440.75	1,901.38	1,785.67	0.00	0.00	0.00
9,600.00	90.00	359.89	7,302.00	1,540.75	1,901.19	1,883.69	0.00	0.00	0.00
9,700.00	90.00	359.89	7,302.00	1,640.75	1,901.00	1,981.71	0.00	0.00	0.00
9,800.00	90.00	359.89	7,302.00	1,740.75	1,900.81	2,079.73	0.00	0.00	0.00
9,900.00	90.00	359.89	7,302.00	1,840.75	1,900.62	2,177.75	0.00	0.00	0.00
10,000.00	90.00	359.89	7,302.00	1,940.75	1,900.43	2,275.77	0.00	0.00	0.00
10,100.00	90.00	359.89	7,302.00	2,040.75	1,900.24	2,373.79	0.00	0.00	0.00
10,200.00	90.00	359.89	7,302.00	2,140.75	1,900.04	2,471.81	0.00	0.00	0.00
10,300.00	90.00	359.89	7,302.00	2,240.75	1,899.85	2,569.83	0.00	0.00	0.00
10,400.00	90.00	359.89	7,302.00	2,340.75	1,899.66	2,667.85	0.00	0.00	0.00
10,500.00	90.00	359.89	7,302.00	2,440.75	1,899.47	2,765.87	0.00	0.00	0.00
10,600.00	90.00	359.89	7,302.00	2,540.75	1,899.28	2,863.89	0.00	0.00	0.00
10,700.00	90.00	359.89	7,302.00	2,640.75	1,899.09	2,961.91	0.00	0.00	0.00
10,800.00	90.00	359.89	7,302.00	2,740.75	1,898.90	3,059.93	0.00	0.00	0.00
10,900.00	90.00	359.89	7,302.00	2,840.75	1,898.71	3,157.95	0.00	0.00	0.00
11,000.00	90.00	359.89	7,302.00	2,940.75	1,898.52	3,255.97	0.00	0.00	0.00
11,100.00	90.00	359.89	7,302.00	3,040.75	1,898.33	3,354.00	0.00	0.00	0.00
11,200.00	90.00	359.89	7,302.00	3,140.75	1,898.14	3,452.02	0.00	0.00	0.00
11,300.00	90.00	359.89	7,302.00	3,240.75	1,897.95	3,550.04	0.00	0.00	0.00
11,400.00	90.00	359.89	7,302.00	3,340.75	1,897.75	3,648.06	0.00	0.00	0.00
11,500.00	90.00	359.89	7,302.00	3,440.75	1,897.56	3,746.08	0.00	0.00	0.00
11,600.00	90.00	359.89	7,302.00	3,540.75	1,897.37	3,844.10	0.00	0.00	0.00
11,700.00	90.00	359.89	7,302.00	3,640.75	1,897.18	3,942.12	0.00	0.00	0.00
11,800.00	90.00	359.89	7,302.00	3,740.75	1,896.99	4,040.14	0.00	0.00	0.00
11,900.00	90.00	359.89	7,302.00	3,840.75	1,896.80	4,138.16	0.00	0.00	0.00
12,000.00	90.00	359.89	7,302.00	3,940.75	1,896.61	4,236.18	0.00	0.00	0.00
12,100.00	90.00	359.89	7,302.00	4,040.75	1,896.42	4,334.20	0.00	0.00	0.00
12,200.00	90.00	359.89	7,302.00	4,140.75	1,896.23	4,432.22	0.00	0.00	0.00
12,300.00	90.00	359.89	7,302.00	4,240.75	1,896.04	4,530.24	0.00	0.00	0.00
12,400.00	90.00	359.89	7,302.00	4,340.75	1,895.85	4,628.26	0.00	0.00	0.00
12,500.00	90.00	359.89	7,302.00	4,440.75	1,895.65	4,726.28	0.00	0.00	0.00
12,600.00	90.00	359.89	7,302.00	4,540.75	1,895.46	4,824.30	0.00	0.00	0.00
12,700.00	90.00	359.89	7,302.00	4,640.75	1,895.27	4,922.32	0.00	0.00	0.00
12,800.00	90.00	359.89	7,302.00	4,740.75	1,895.08	5,020.34	0.00	0.00	0.00
12,900.00	90.00	359.89	7,302.00	4,840.75	1,894.89	5,118.36	0.00	0.00	0.00
13,000.00	90.00	359.89	7,302.00	4,940.75	1,894.70	5,216.38	0.00	0.00	0.00
13,100.00	90.00	359.89	7,302.00	5,040.75	1,894.51	5,314.40	0.00	0.00	0.00
13,200.00	90.00	359.89	7,302.00	5,140.75	1,894.32	5,412.42	0.00	0.00	0.00
13,300.00	90.00	359.89	7,302.00	5,240.75	1,894.13	5,510.45	0.00	0.00	0.00
13,400.00	90.00	359.89	7,302.00	5,340.75	1,893.94	5,608.47	0.00	0.00	0.00
13,500.00	90.00	359.89	7,302.00	5,440.75	1,893.75	5,706.49	0.00	0.00	0.00
13,600.00	90.00	359.89	7,302.00	5,540.75	1,893.56	5,804.51	0.00	0.00	0.00
13,700.00	90.00	359.89	7,302.00	5,640.75	1,893.36	5,902.53	0.00	0.00	0.00
13,800.00	90.00	359.89	7,302.00	5,740.75	1,893.17	6,000.55	0.00	0.00	0.00
13,900.00	90.00	359.89	7,302.00	5,840.75	1,892.98	6,098.57	0.00	0.00	0.00
14,000.00	90.00	359.89	7,302.00	5,940.75	1,892.79	6,196.59	0.00	0.00	0.00
14,100.00	90.00	359.89	7,302.00	6,040.75	1,892.60	6,294.61	0.00	0.00	0.00
14,200.00	90.00	359.89	7,302.00	6,140.75	1,892.41	6,392.63	0.00	0.00	0.00
14,300.00	90.00	359.89	7,302.00	6,240.75	1,892.22	6,490.65	0.00	0.00	0.00
14,400.00	90.00	359.89	7,302.00	6,340.75	1,892.03	6,588.67	0.00	0.00	0.00
14,500.00	90.00	359.89	7,302.00	6,440.75	1,891.84	6,686.69	0.00	0.00	0.00
14,600.00	90.00	359.89	7,302.00	6,540.75	1,891.65	6,784.71	0.00	0.00	0.00
14,700.00	90.00	359.89	7,302.00	6,640.75	1,891.46	6,882.73	0.00	0.00	0.00

Database:	Casper District	Local Co-ordinate Reference:	Well Evans 9N-14C-L
Company:	Synergy Resources Corp.	TVD Reference:	GL 4940 & KB 20 @ 4960.00ft (PD 462)
Project:	Weld County, CO NAD 83	MD Reference:	GL 4940 & KB 20 @ 4960.00ft (PD 462)
Site:	Evans 7-26 Pad	North Reference:	True
Well:	Evans 9N-14C-L	Survey Calculation Method:	Minimum Curvature
Wellbore:	OH		
Design:	Plan #1		

Planned Survey									
Measured Depth (ft)	Inclination (°)	Azimuth (°)	Vertical Depth (ft)	+N/-S (ft)	+E/-W (ft)	Vertical Section (ft)	Dogleg Rate (°/100ft)	Build Rate (°/100ft)	Turn Rate (°/100ft)
14,800.00	90.00	359.89	7,302.00	6,740.75	1,891.26	6,980.75	0.00	0.00	0.00
14,900.00	90.00	359.89	7,302.00	6,840.74	1,891.07	7,078.77	0.00	0.00	0.00
15,000.00	90.00	359.89	7,302.00	6,940.74	1,890.88	7,176.79	0.00	0.00	0.00
15,100.00	90.00	359.89	7,302.00	7,040.74	1,890.69	7,274.81	0.00	0.00	0.00
15,200.00	90.00	359.89	7,302.00	7,140.74	1,890.50	7,372.83	0.00	0.00	0.00
15,300.00	90.00	359.89	7,302.00	7,240.74	1,890.31	7,470.85	0.00	0.00	0.00
15,400.00	90.00	359.89	7,302.00	7,340.74	1,890.12	7,568.87	0.00	0.00	0.00
15,500.00	90.00	359.89	7,302.00	7,440.74	1,889.93	7,666.90	0.00	0.00	0.00
15,600.00	90.00	359.89	7,302.00	7,540.74	1,889.74	7,764.92	0.00	0.00	0.00
15,700.00	90.00	359.89	7,302.00	7,640.74	1,889.55	7,862.94	0.00	0.00	0.00
15,800.00	90.00	359.89	7,302.00	7,740.74	1,889.36	7,960.96	0.00	0.00	0.00
15,900.00	90.00	359.89	7,302.00	7,840.74	1,889.17	8,058.98	0.00	0.00	0.00
16,000.00	90.00	359.89	7,302.00	7,940.74	1,888.97	8,157.00	0.00	0.00	0.00
16,100.00	90.00	359.89	7,302.00	8,040.74	1,888.78	8,255.02	0.00	0.00	0.00
16,200.00	90.00	359.89	7,302.00	8,140.74	1,888.59	8,353.04	0.00	0.00	0.00
16,300.00	90.00	359.89	7,302.00	8,240.74	1,888.40	8,451.06	0.00	0.00	0.00
16,400.00	90.00	359.89	7,302.00	8,340.74	1,888.21	8,549.08	0.00	0.00	0.00
16,500.00	90.00	359.89	7,302.00	8,440.74	1,888.02	8,647.10	0.00	0.00	0.00
16,600.00	90.00	359.89	7,302.00	8,540.74	1,887.83	8,745.12	0.00	0.00	0.00
16,700.00	90.00	359.89	7,302.00	8,640.74	1,887.64	8,843.14	0.00	0.00	0.00
16,800.00	90.00	359.89	7,302.00	8,740.74	1,887.45	8,941.16	0.00	0.00	0.00
16,900.00	90.00	359.89	7,302.00	8,840.74	1,887.26	9,039.18	0.00	0.00	0.00
17,000.00	90.00	359.89	7,302.00	8,940.74	1,887.07	9,137.20	0.00	0.00	0.00
17,100.00	90.00	359.89	7,302.00	9,040.74	1,886.87	9,235.22	0.00	0.00	0.00
17,200.00	90.00	359.89	7,302.00	9,140.74	1,886.68	9,333.24	0.00	0.00	0.00
17,300.00	90.00	359.89	7,302.00	9,240.74	1,886.49	9,431.26	0.00	0.00	0.00
17,400.00	90.00	359.89	7,302.00	9,340.74	1,886.30	9,529.28	0.00	0.00	0.00
17,489.89	90.00	359.89	7,302.00	9,430.63	1,886.13	9,617.39	0.00	0.00	0.00
TD at 17489.89 - 9C-14C-L(460 FNL 664 FEL)PBHL									

Design Targets									
Target Name	Dip Angle (°)	Dip Dir. (°)	TVD (ft)	+N/-S (ft)	+E/-W (ft)	Northing (usft)	Easting (usft)	Latitude	Longitude
9C-14C-L(460 FNL 664 - hit/miss target - Shape - Point	0.00	0.00	7,302.00	9,430.63	1,886.13	1,388,760.18	3,212,412.23	40.3980410	-104.7373400

Casing Points					
Measured Depth (ft)	Vertical Depth (ft)	Name	Casing Diameter (in)	Hole Diameter (in)	
1,754.58	1,700.00	9 5/8"	9.625	13.500	

Database:	Casper District	Local Co-ordinate Reference:	Well Evans 9N-14C-L
Company:	Synergy Resources Corp.	TVD Reference:	GL 4940 & KB 20 @ 4960.00ft (PD 462)
Project:	Weld County, CO NAD 83	MD Reference:	GL 4940 & KB 20 @ 4960.00ft (PD 462)
Site:	Evans 7-26 Pad	North Reference:	True
Well:	Evans 9N-14C-L	Survey Calculation Method:	Minimum Curvature
Wellbore:	OH		
Design:	Plan #1		

Plan Annotations				
Measured Depth (ft)	Vertical Depth (ft)	Local Coordinates		Comment
		+N/-S (ft)	+E/-W (ft)	
300.00	300.00	0.00	0.00	Start Build 2.00
1,443.45	1,413.33	-68.37	214.55	Start 3986.72 hold at 1443.45 MD
5,430.16	5,086.67	-538.82	1,690.74	Start Drop -2.00
6,573.61	6,200.00	-607.19	1,905.29	Start 581.13 hold at 6573.61 MD
7,154.74	6,781.13	-607.19	1,905.29	Start DLS 11.00 TFO 359.89
7,972.92	7,302.00	-86.32	1,904.30	Start 9516.97 hold at 7972.92 MD
17,489.89	7,302.00	9,430.63	1,886.13	TD at 17489.89