



Scale 1:240 (5"=100') Imperial
Measured Depth Log

Well Name: Horsetail 07E-1834
Well Id: 05-123-41642-00
Location: Sec 7-T10N-R57W
License Number: 05-123-41642-00
Spud Date: 12/15/2015
Surface Coordinates: Lat.: 40.853961 Long.: -103.801258

Region: Redtail Field
Drilling Completed: 12/20/2015

Bottom Hole
Coordinates:
Ground Elevation (ft): 4926
Logged Interval (ft): 5310 To: 14144
Formation: Pierre, Sharon Springs, Niobrara A, Niobrara B, Niobrara C
Type of Drilling Fluid: Water Based Mud

K.B. Elevation (ft): 4947
Total Depth (ft): 14144

Printed by HORIZONTAL.LOG from WellSight Systems 1-800-447-1534 www.WellSight.com

OPERATOR

Company: Whiting Oil & Gas Corp.
Address: 1700 Broadway Suite 2300
Denver, CO 80290

GEOLOGIST

Name: Brian Reddick and Eli DenBeten
Company: Acme Geologic Consulting
Address: 108 Berry Street
Little Rock, AR 72205

Drilling Company

Unit Drilling Company
Rig 409

Gas Detection






Mudlogging Systems, Inc., M Logger, Model TGC, Total Gas and Chromatograph

Comments

Lithologies and tops at drilled depths, not corrected to elogs. Where the well bore gas is 100% methane, the C1 line is moved to 85% for graphical purposes only.

ROCK TYPES

 Anhy
 Bent
 Brec
 Cht
 Clyst

 Coal
 Congl
 Dol
 Gyp
 Igne

 Lmst
 Meta
 Cyan mrlst
 Mrlst
 Salt

 Shale
 Shcol
 Shgy
 Sltst
 Ss



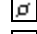
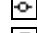

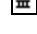
 Till
 Cyan chk
 Chalk

ACCESSORIES

MINERAL
 Anhy
 Arggrn
 Arg
 Bent
 Bit
 Brecfrag
 Calc
 Carb
 Chtdk
 Chtlt
 Dol
 Feldspar
 Ferrpel
 Ferr
 Glau

 Gyp
 Hvymin
 Kaol
 Marl
 Minxl
 Nodule
 Phos
 Pyr
 Salt
 Sandy
 Silt
 Sil
 Sulphur
 Tuff

FOSSIL
 Algae
 Amph
 Belm
 Bioclst
 Brach
 Bryozoa
 Cephal
 Coral
 Crin
 Echin
 Fish
 Foram
 Fossil
 Gastro
 Oolite

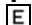




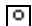
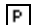
 Ostra
 Pelec
 Pellet
 Pisolite
 Plant
 Strom

STRINGER
 Anhy
 Arg
 Bent
 Coal
 Dol
 Gyp
 Ls
 Mrst

 Sltstrg
 Ssstrg

TEXTURE
 Boundst
 Chalky
 Cryxln
 Earthy
 Finexln
 Grainst
 Lithogr
 Microxln
 Mudst
 Packst
 Wackest

POROSITY

-  Earthy
-  Fenest
-  Fracture
-  Inter
-  Moldic
-  Organic
-  Pinpoint



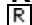
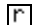
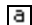

Vuggy

SORTING

-  Well
-  Moderate
-  Poor

OTHER SYMBOLS

ROUNDING

-  Rounded
-  Subrnd
-  Subang
-  Angular

OIL SHOW

-  Even



Spotted



Ques



Dead

INTERVAL



Core



Dst

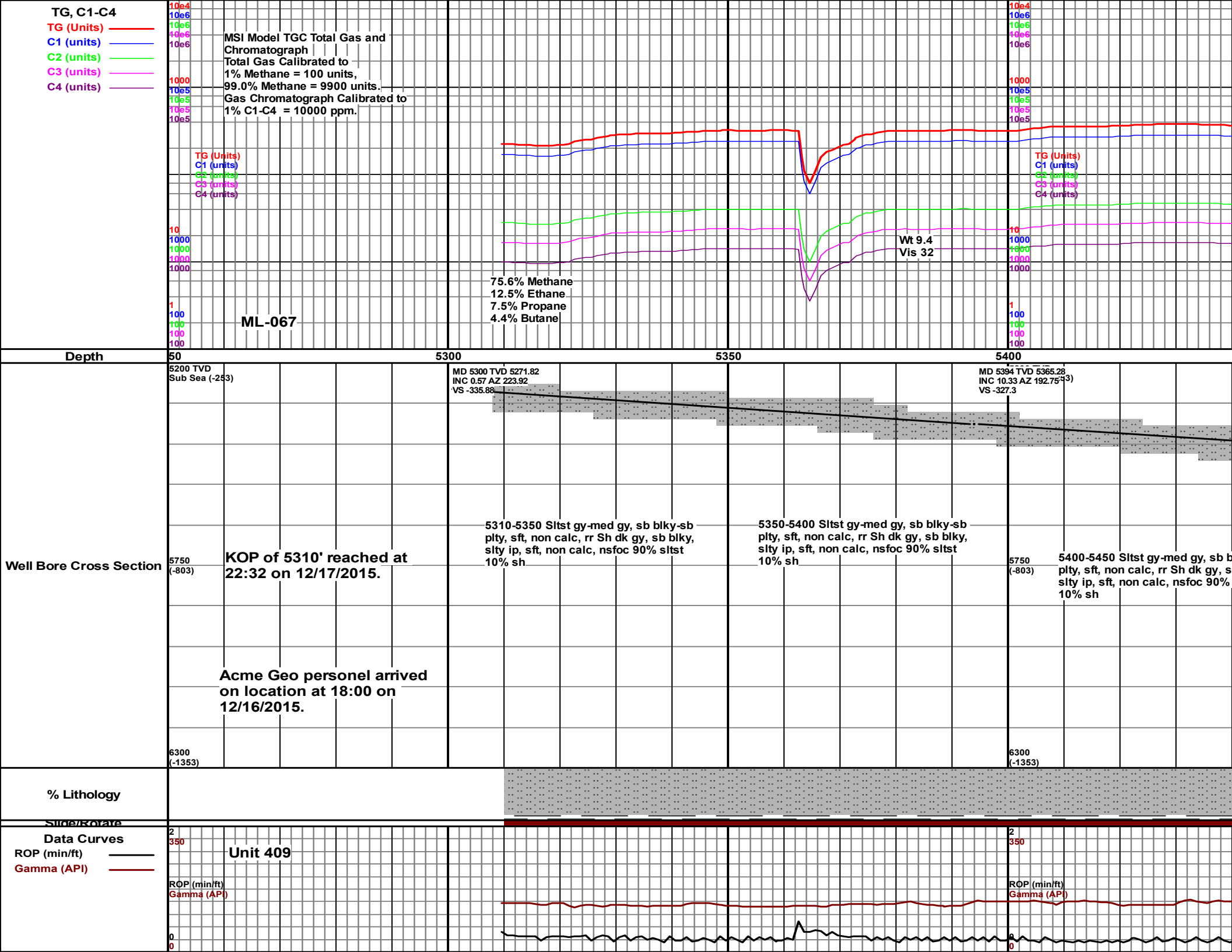
EVENT

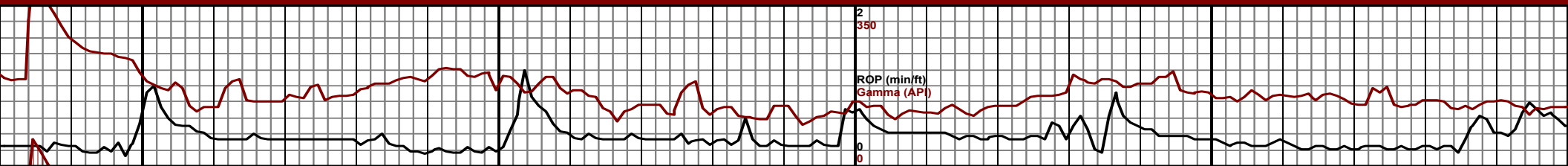
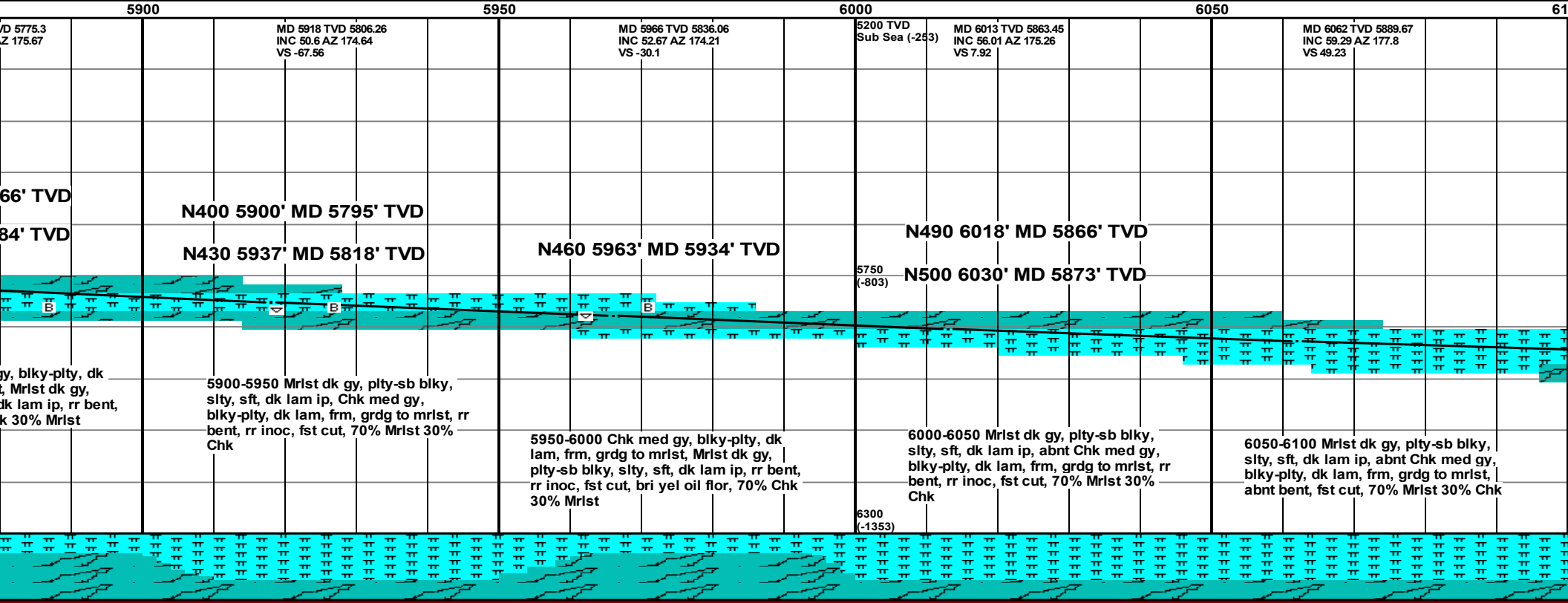
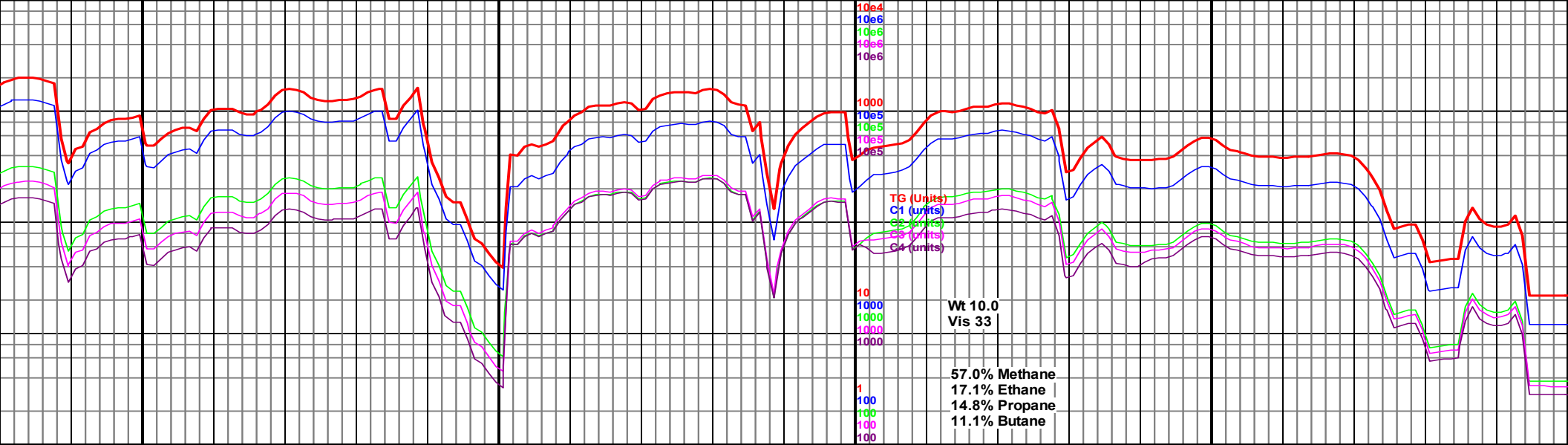


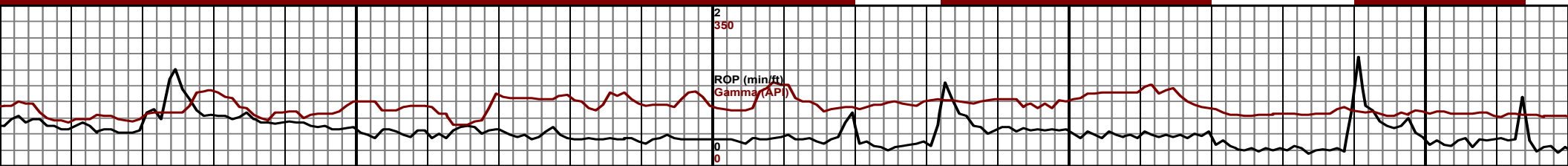
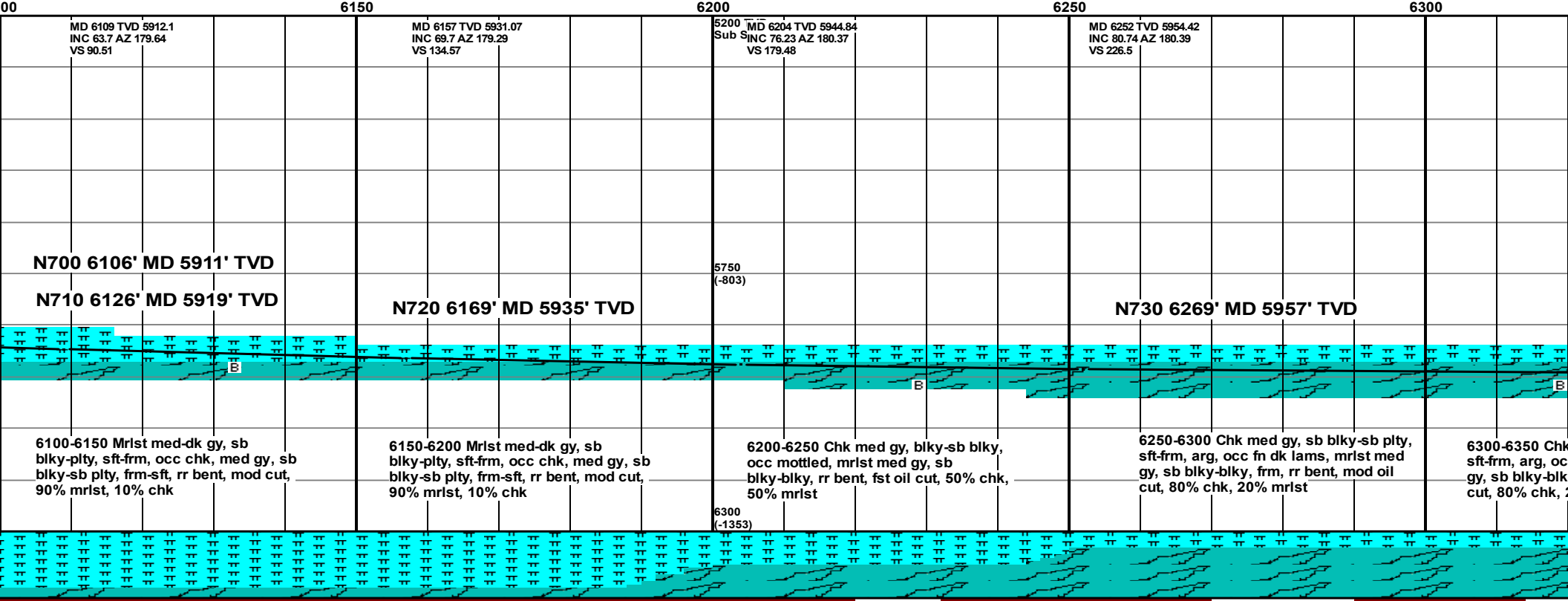
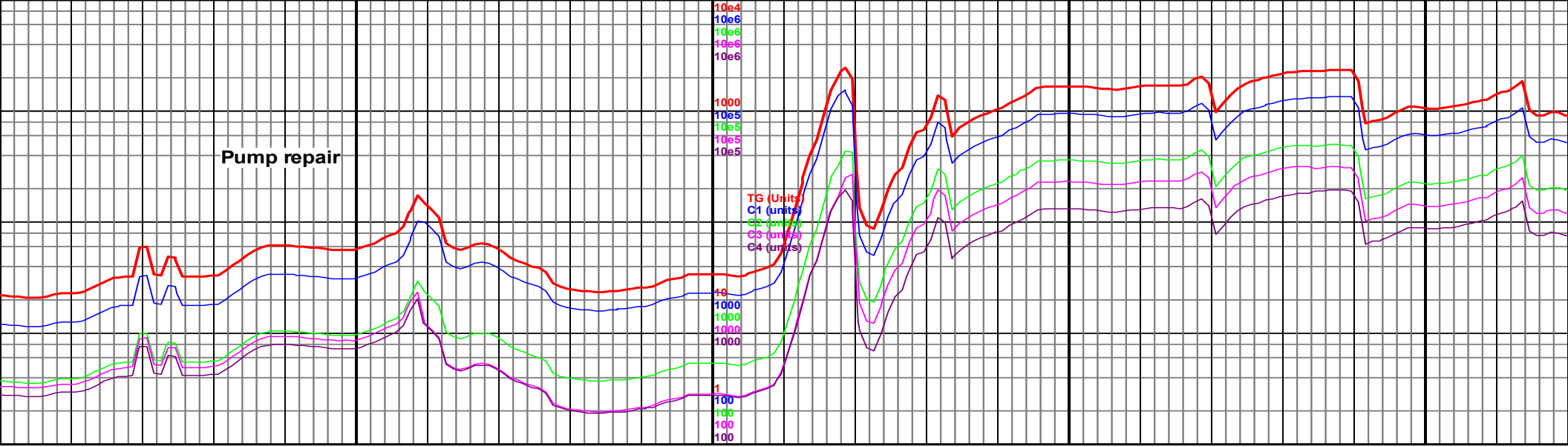
Rft

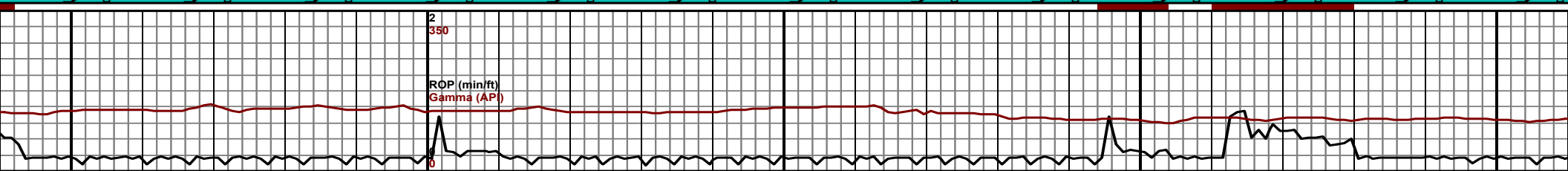
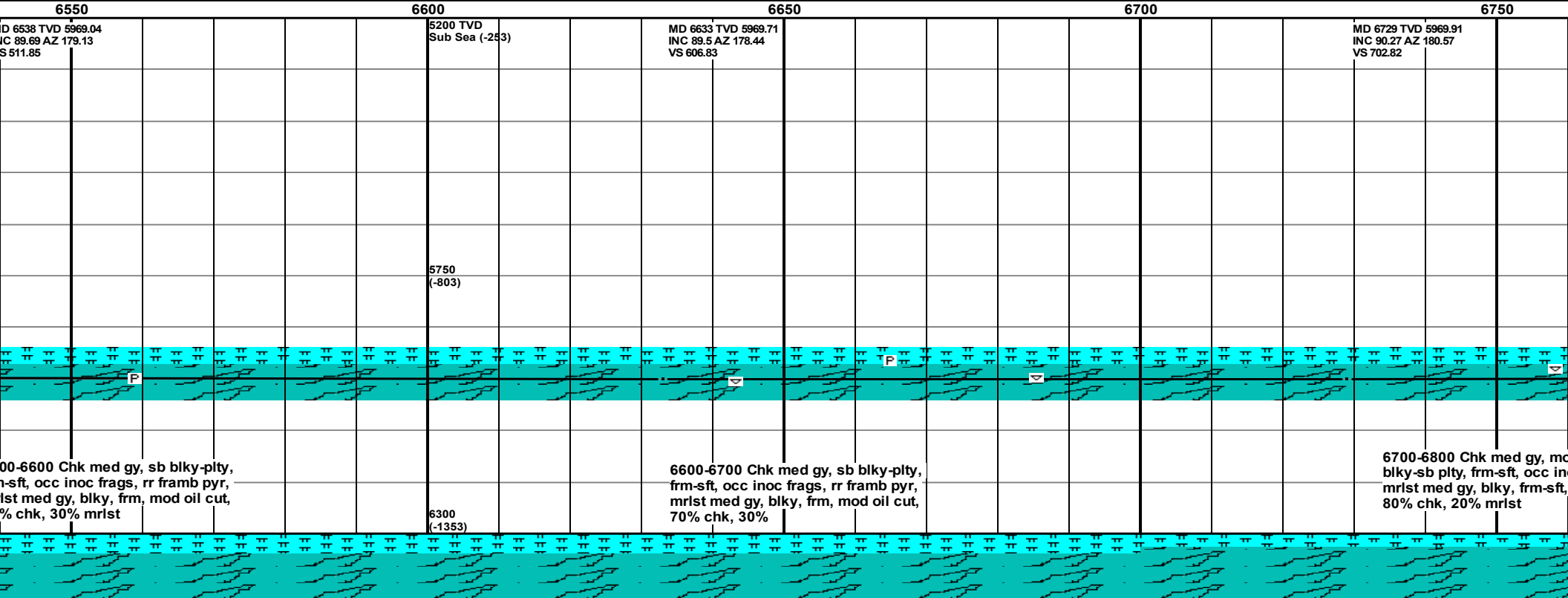
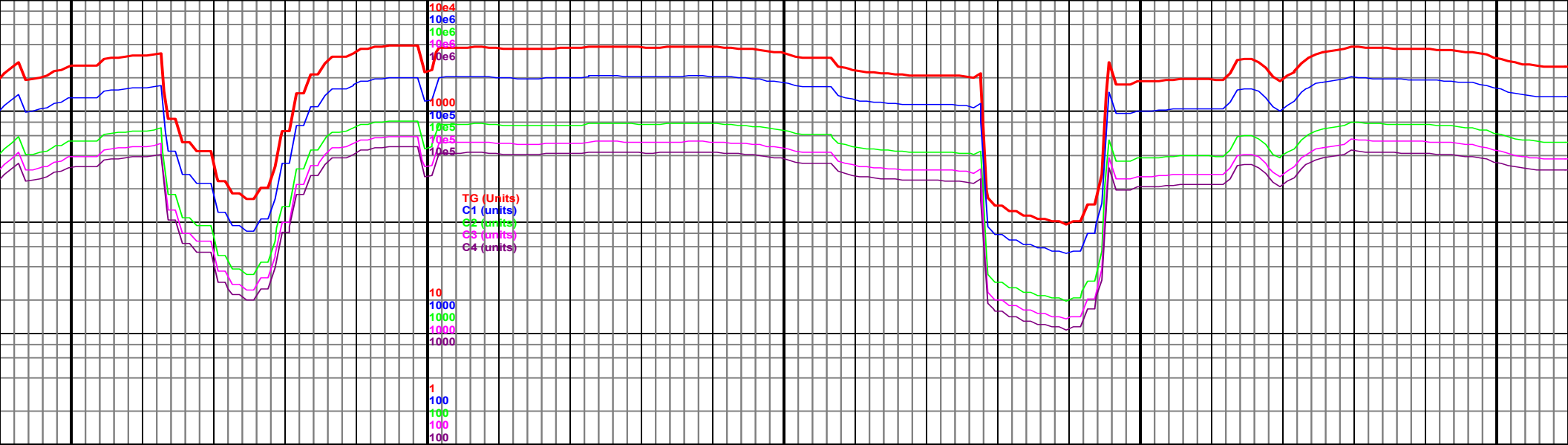


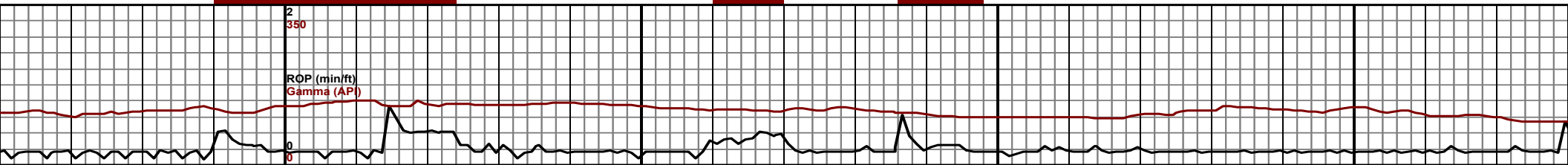
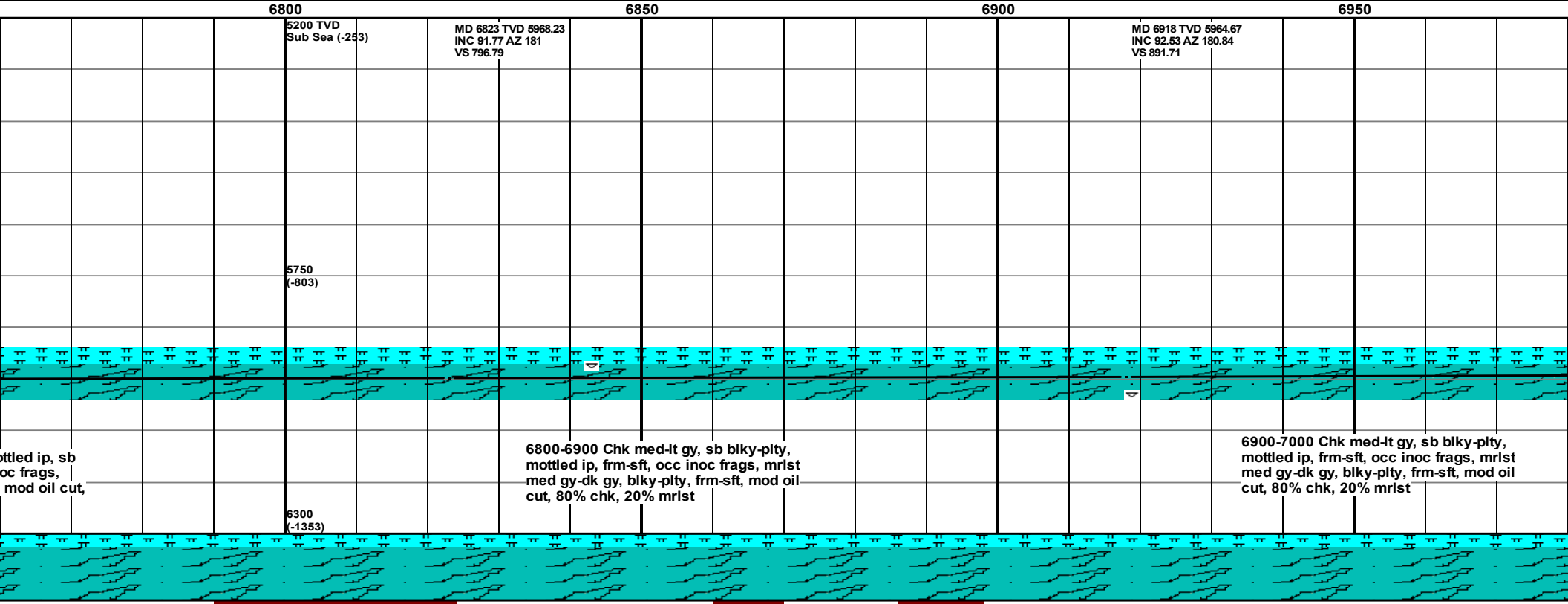
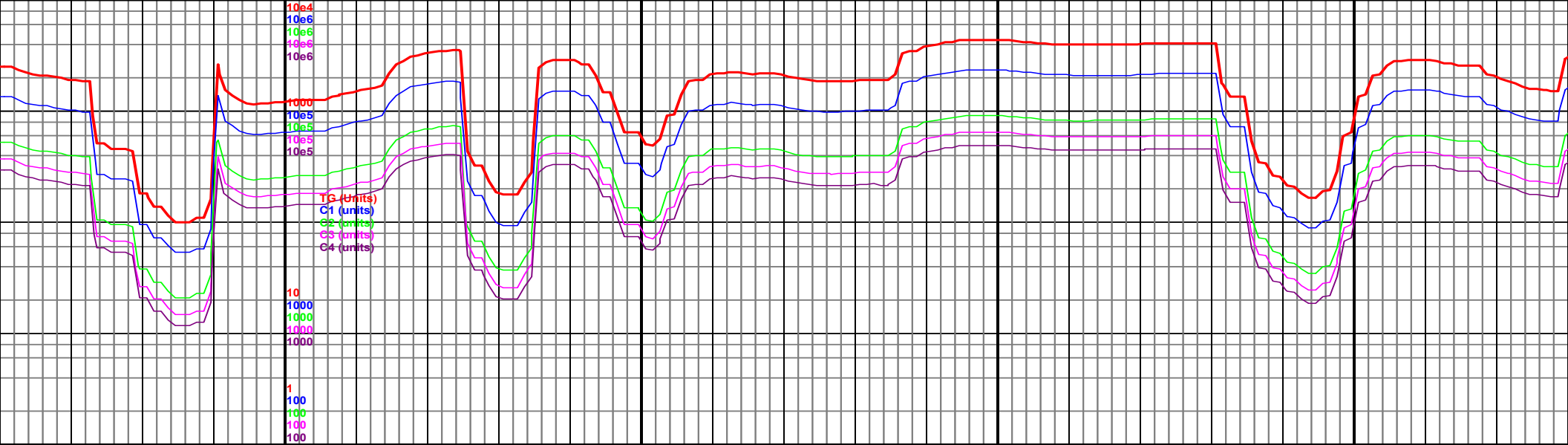
Sidewall

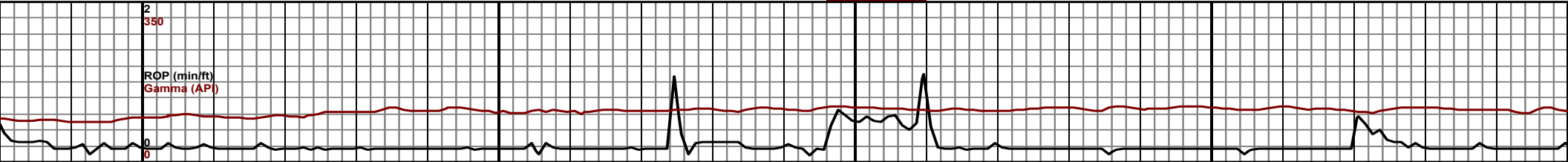
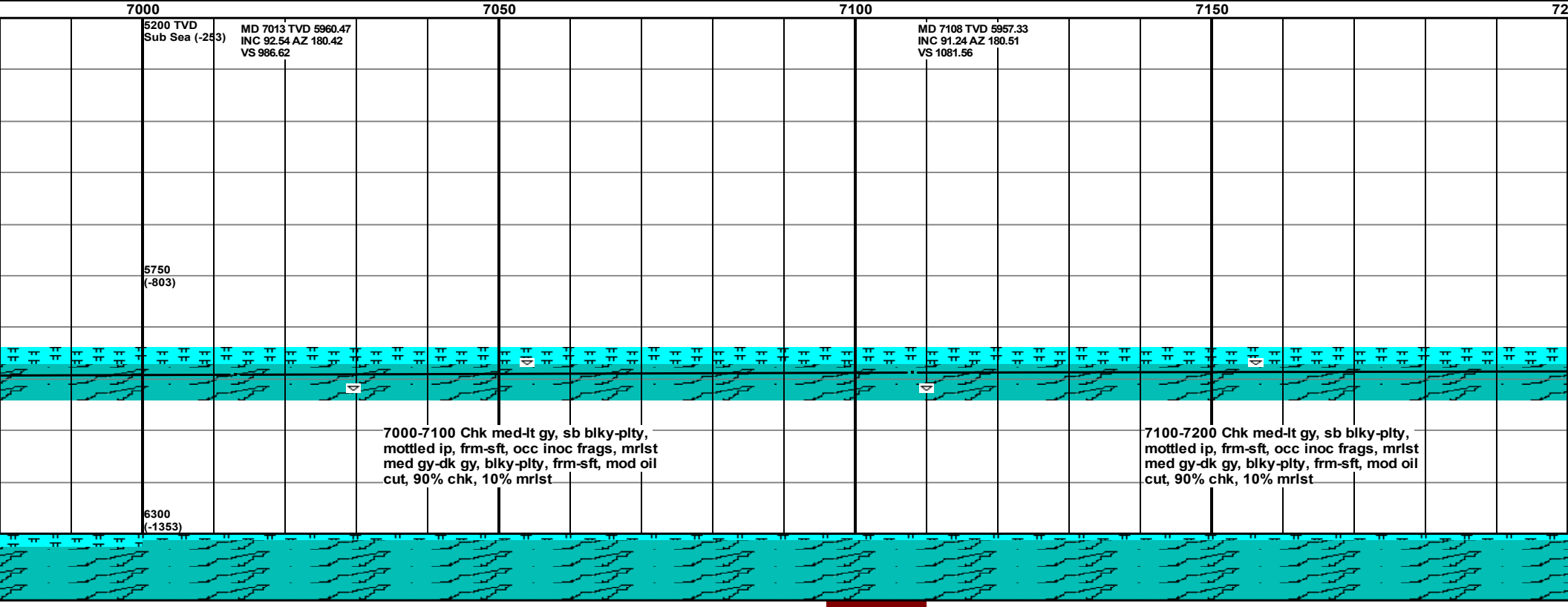
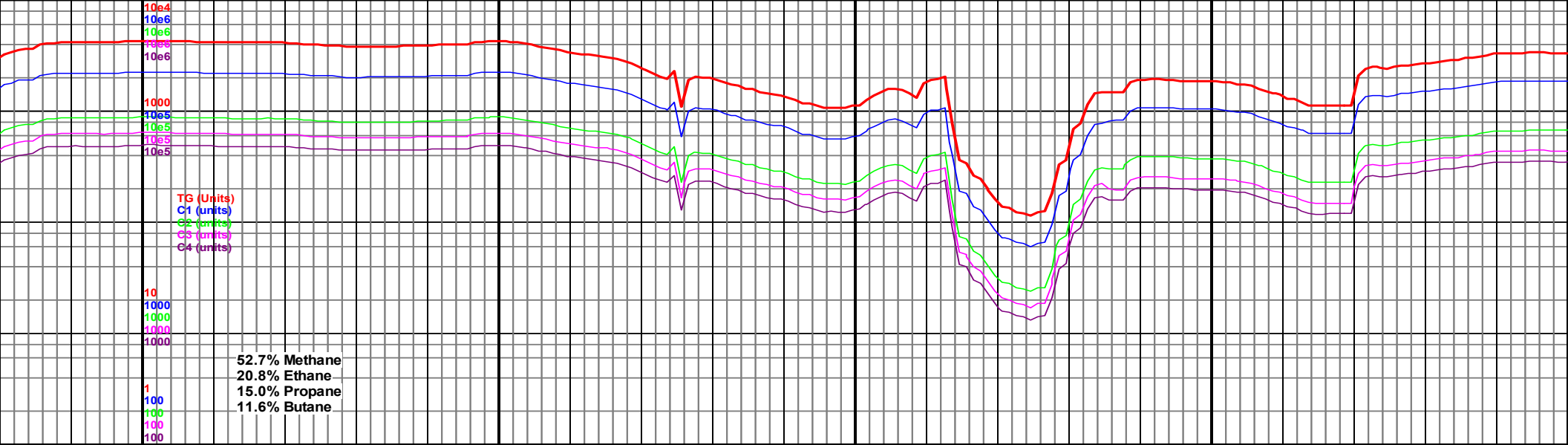


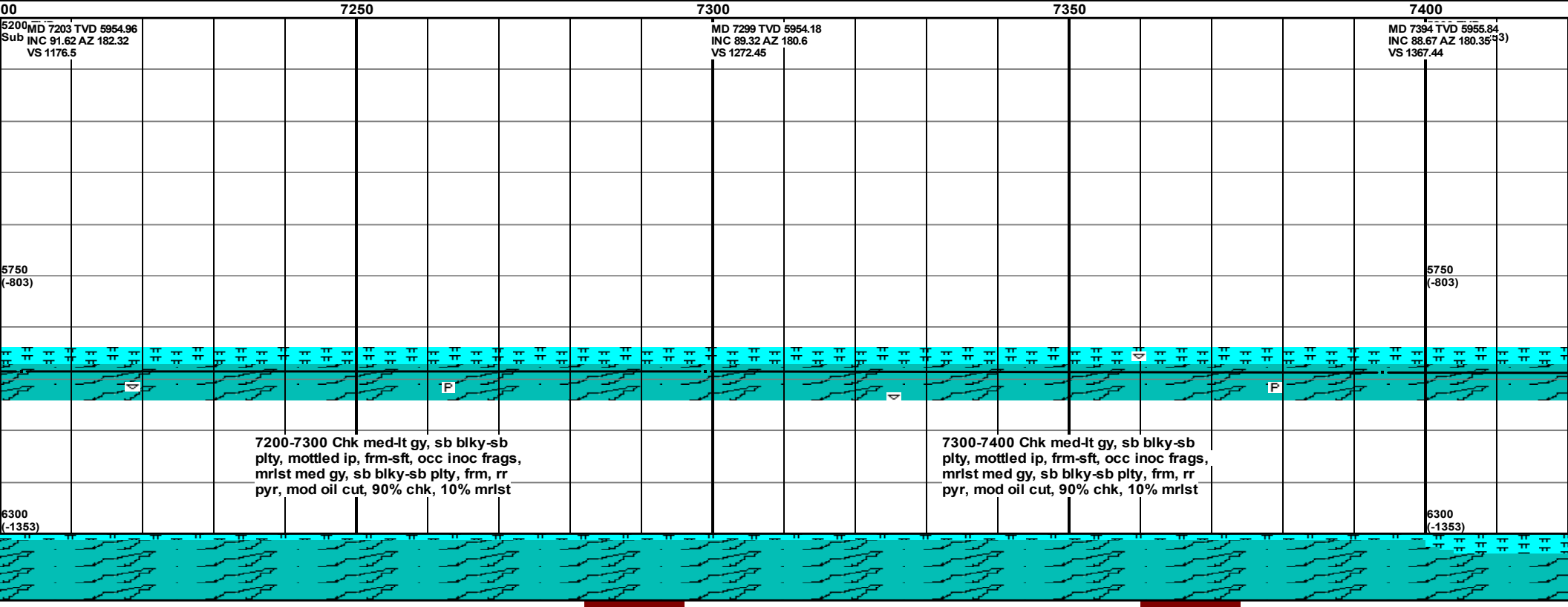
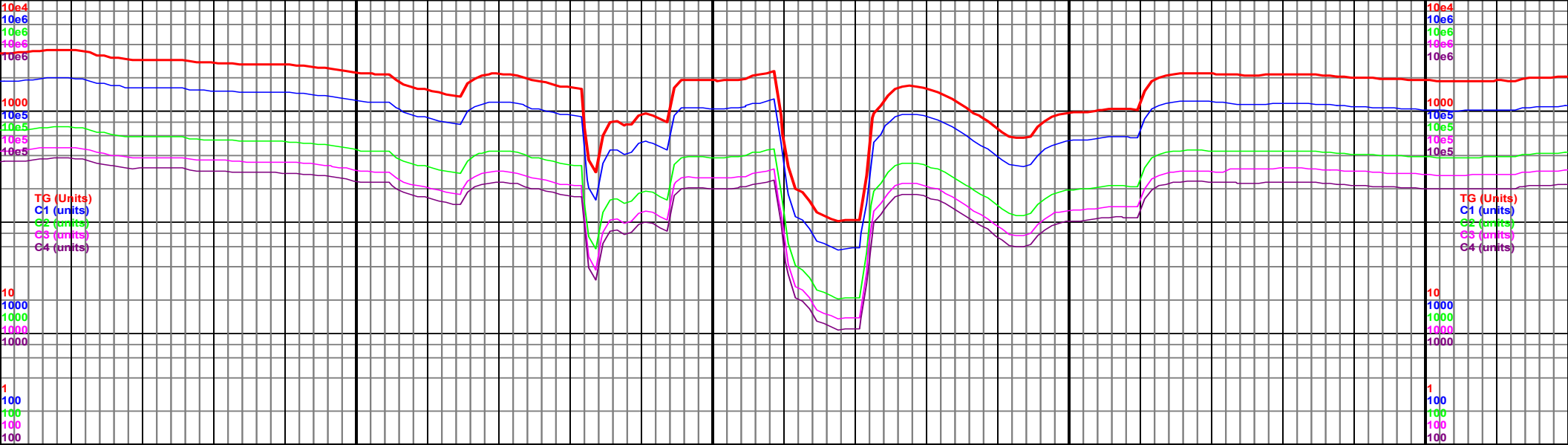


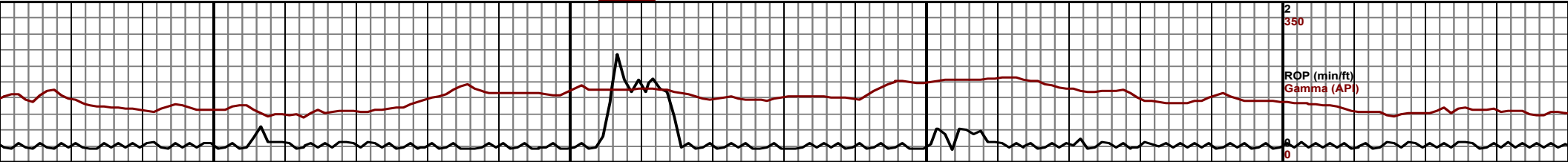
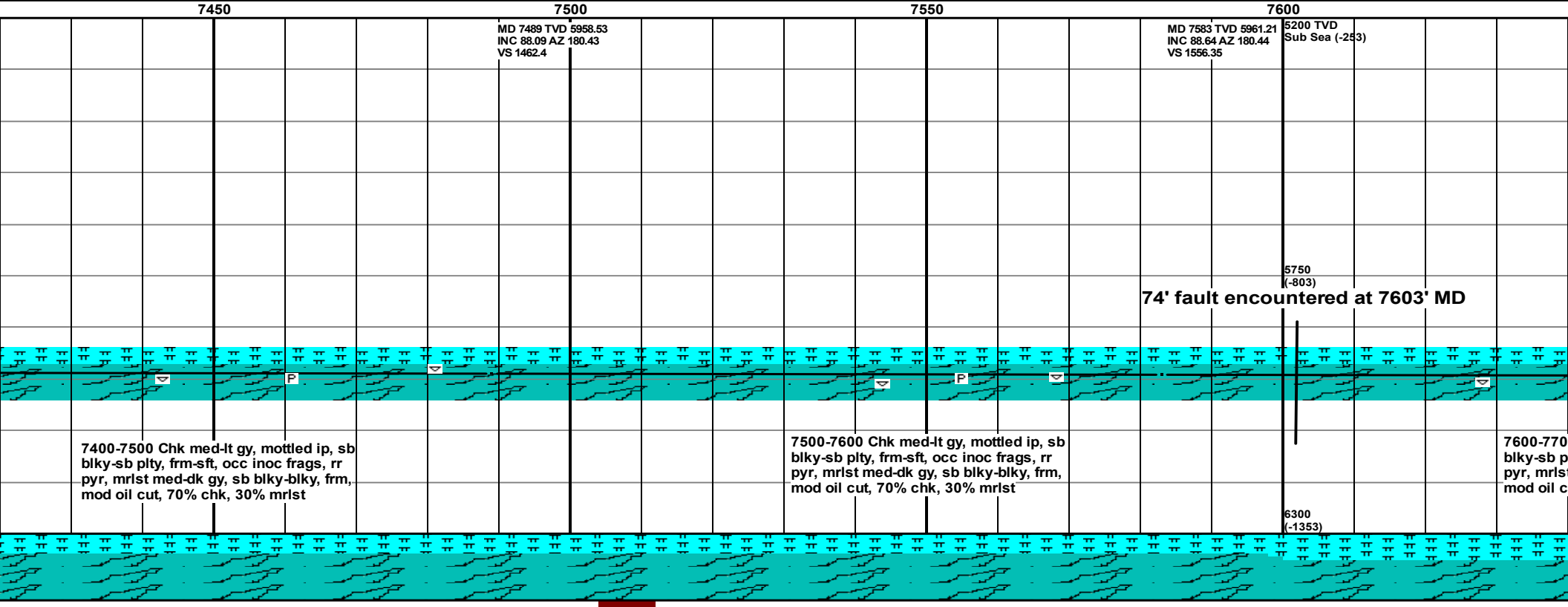
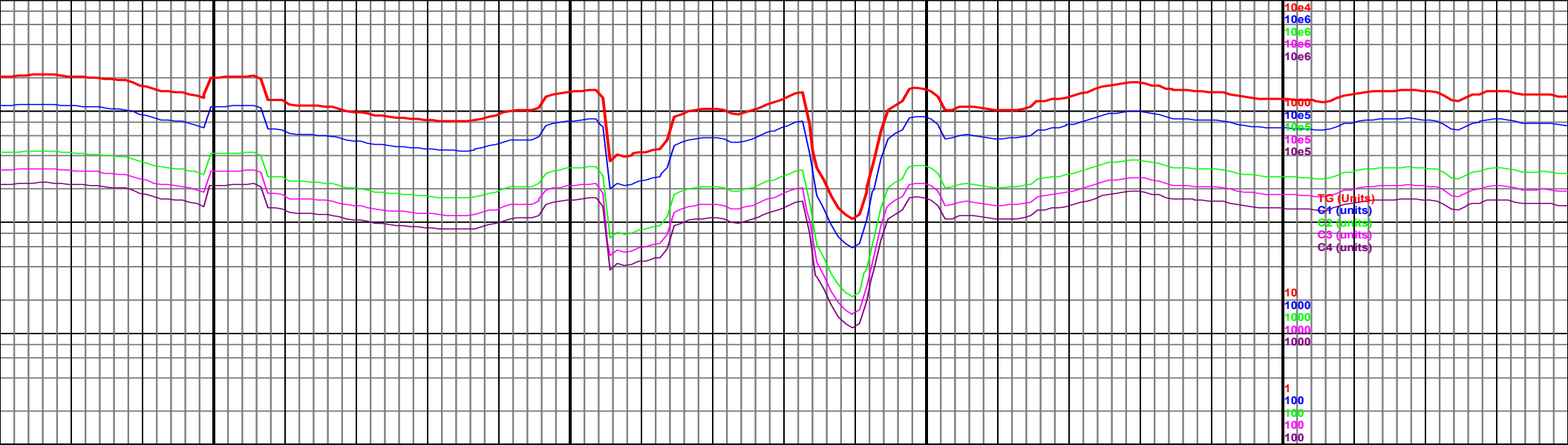


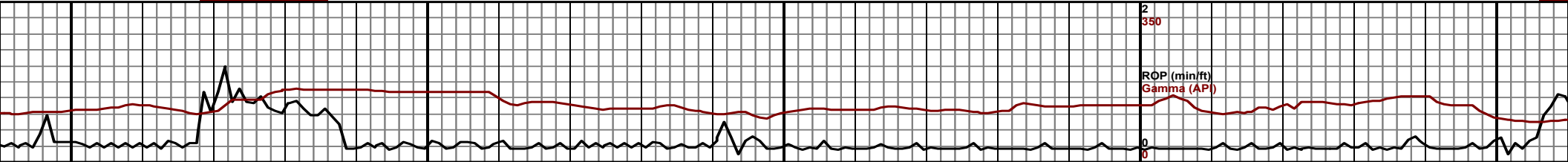
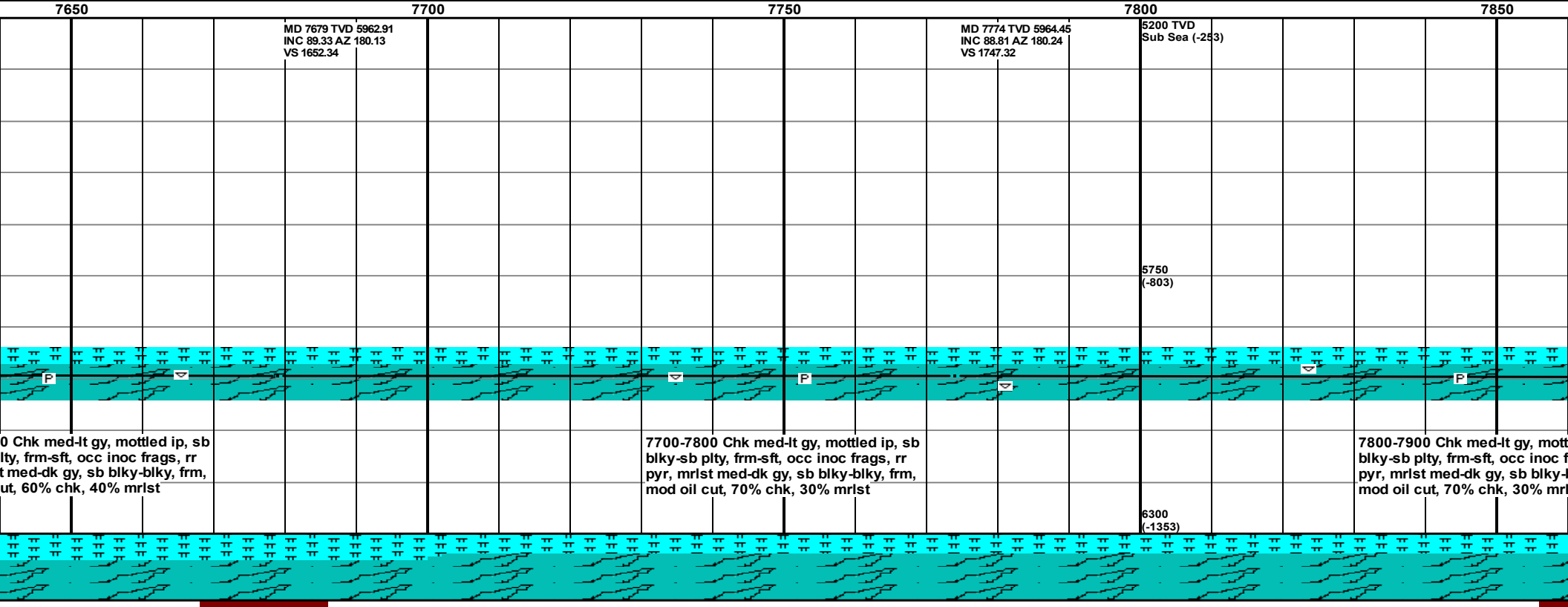
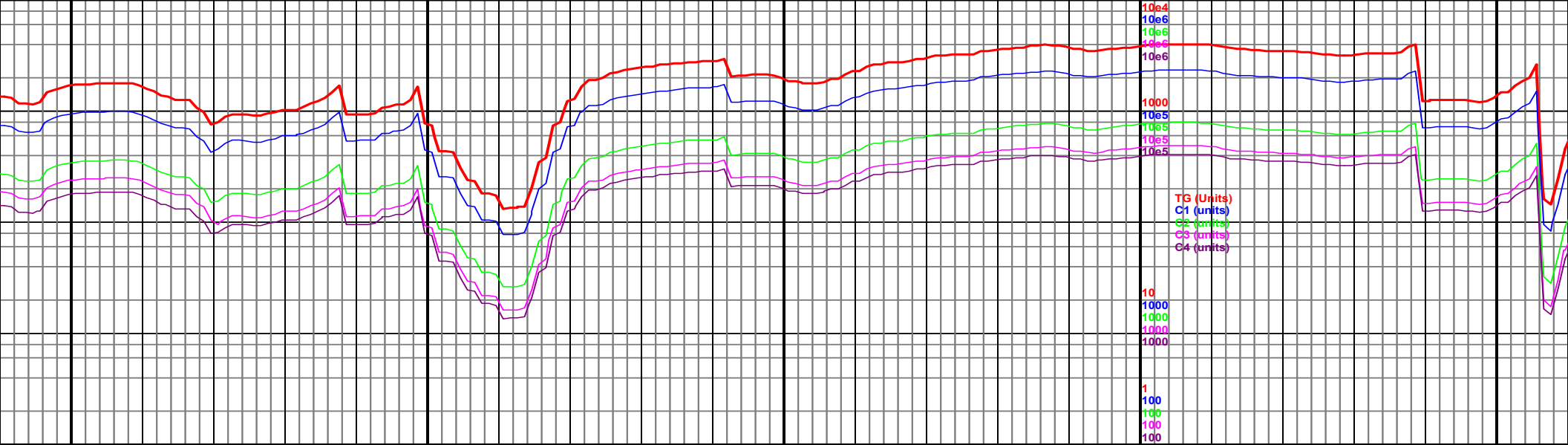


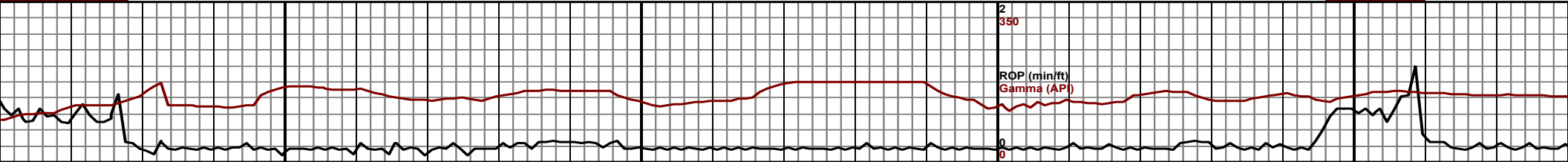
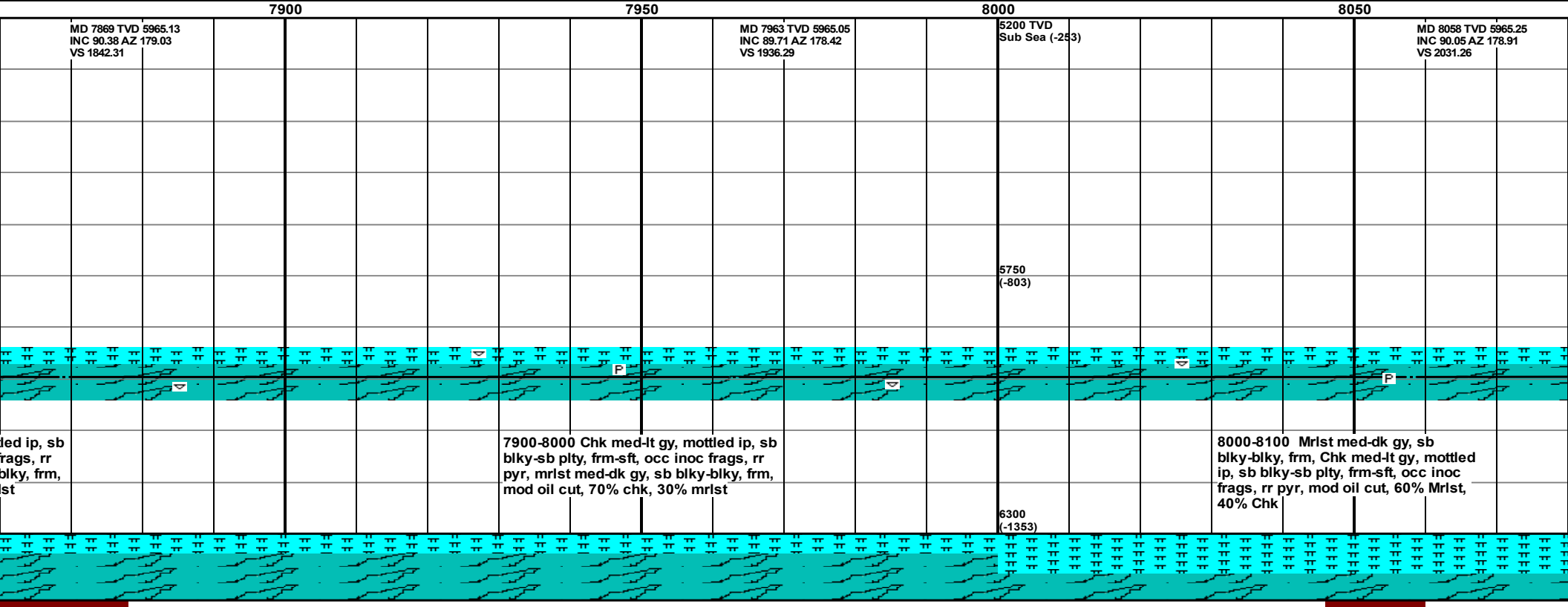
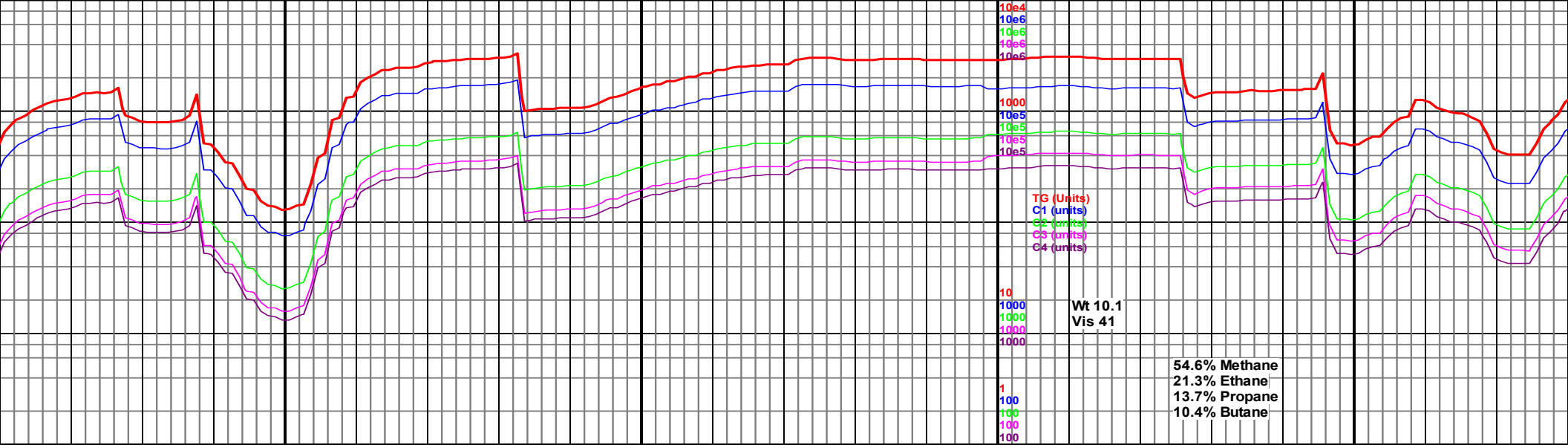


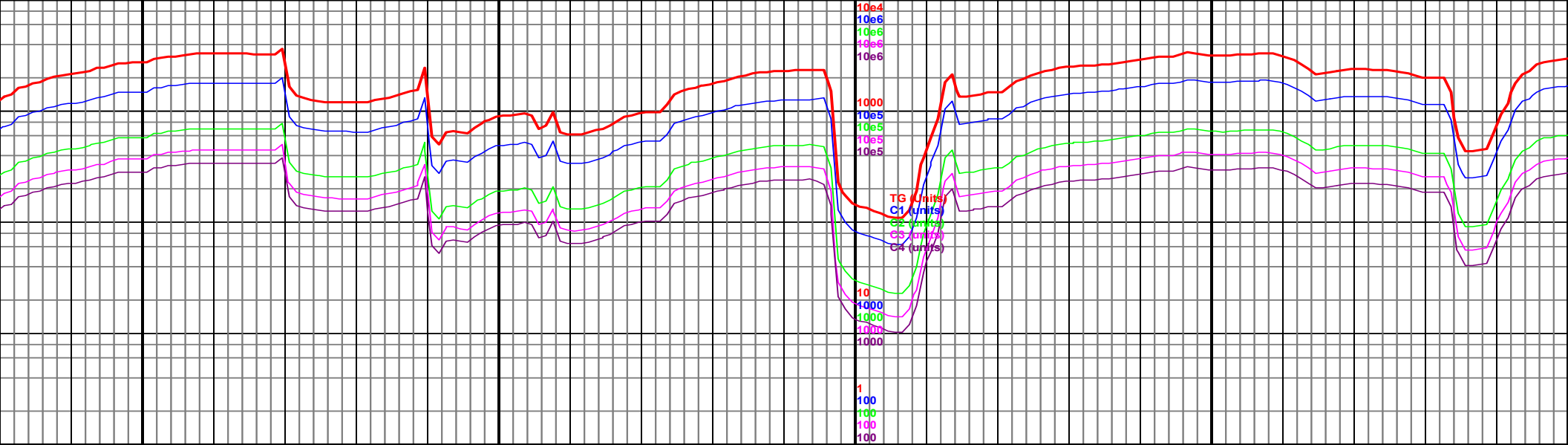












8100

8150

8200

8250

8300

MD 8152 TVD 5963.87
INC 91.63 AZ 180.05
VS 2125.25

5200 TVD
Sub Sea (-253)

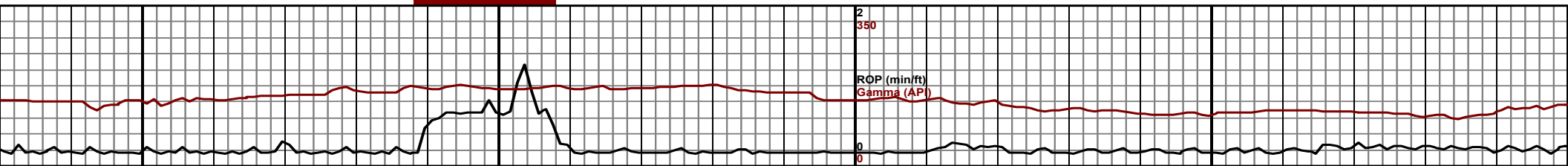
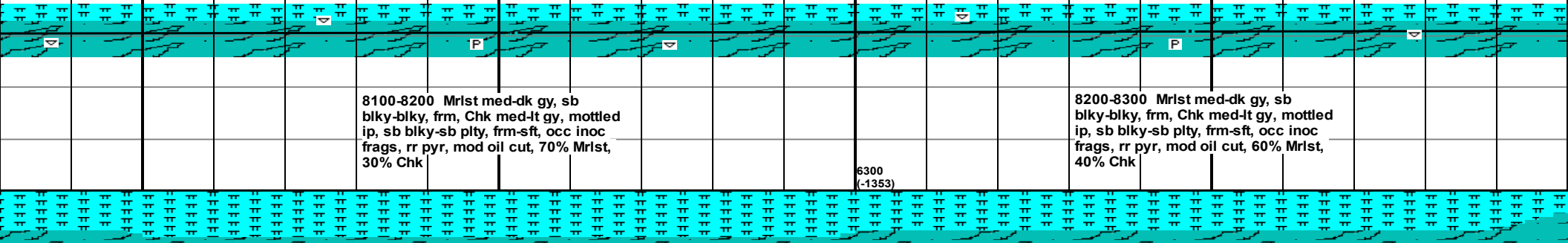
MD 8247 TVD 5960.86
INC 92.42 AZ 180.05
VS 2220.2

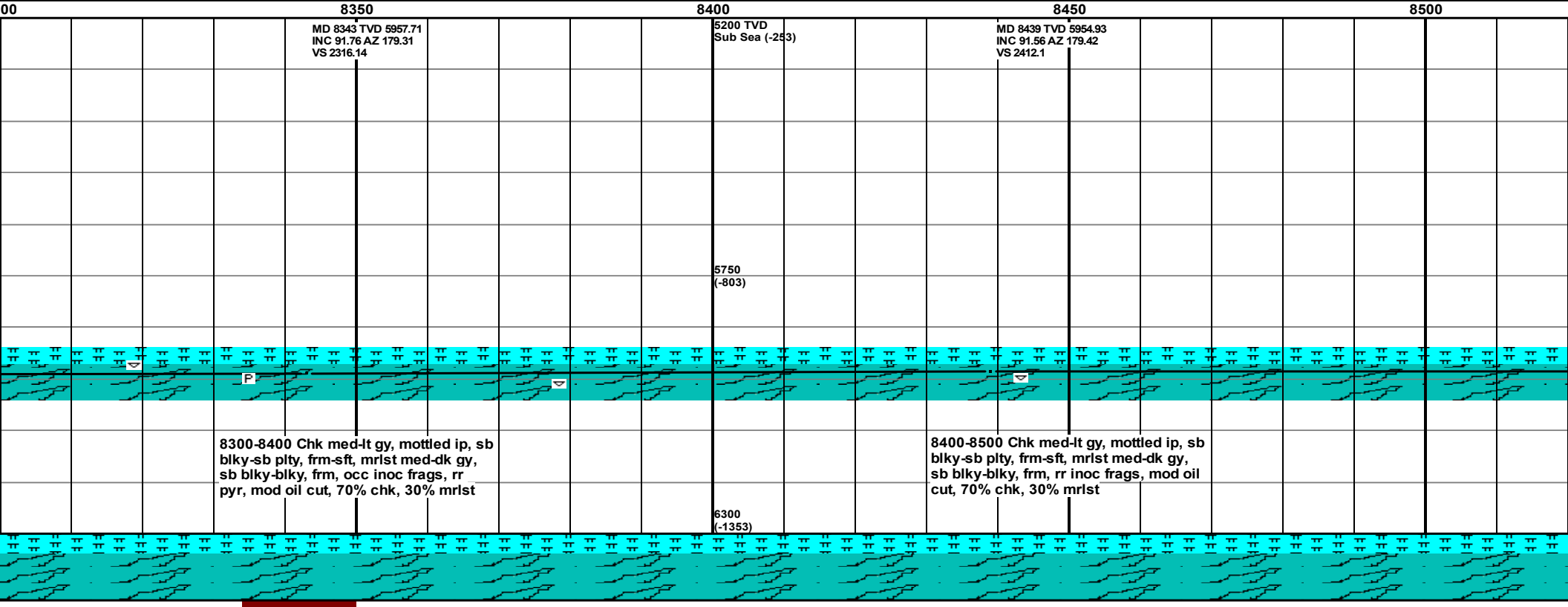
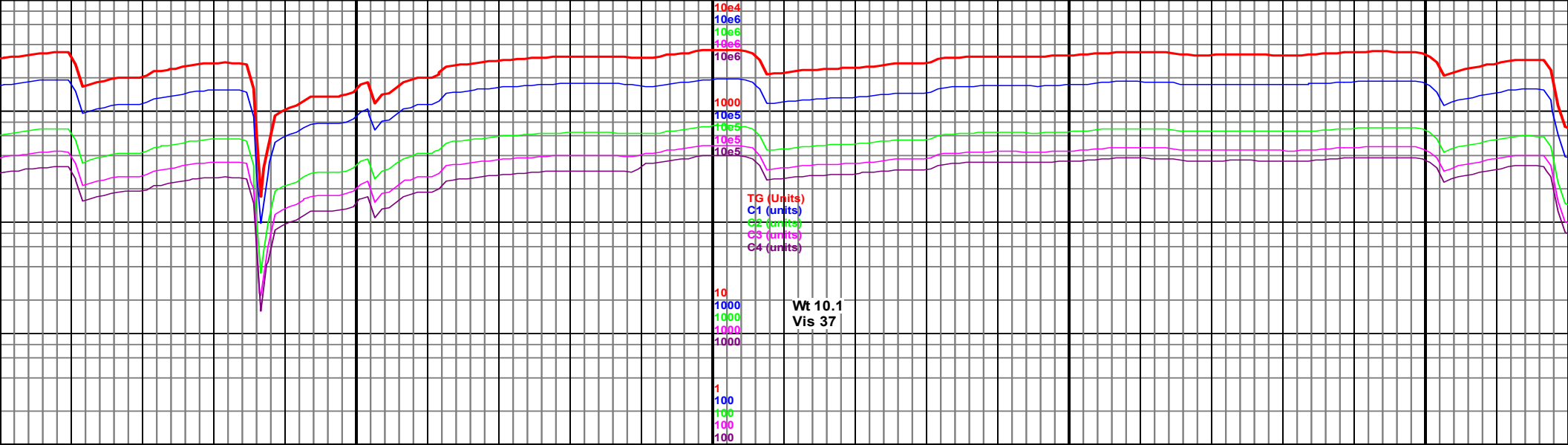
5750
(-803)

6300
(-1353)

8100-8200 Mrlst med-dk gy, sb
blky-blky, frm, Chk med-lt gy, mottled
ip, sb blky-sb plty, frm-sft, occ inoc
frags, rr pyr, mod oil cut, 70% Mrlst,
30% Chk

8200-8300 Mrlst med-dk gy, sb
blky-blky, frm, Chk med-lt gy, mottled
ip, sb blky-sb plty, frm-sft, occ inoc
frags, rr pyr, mod oil cut, 60% Mrlst,
40% Chk





8300-8400 Chk med-lt gy, mottled ip, sb
blky-sb plty, frm-sft, mrlst med-dk gy,
sb blky-blky, frm, occ inoc frags, rr
pyr, mod oil cut, 70% chk, 30% mrlst

8400-8500 Chk med-lt gy, mottled ip, sb
blky-sb plty, frm-sft, mrlst med-dk gy,
sb blky-blky, frm, rr inoc frags, mod oil
cut, 70% chk, 30% mrlst

