



LEGEND

- ◆ ~ FOUND ORIGINAL STONE
- ~ FOUND GLO BRASS CAP ON STEEL POST
- ⊕ ~ FOUND REBAR AND CAP BY LS15710
- ~ FOUND No.6 REBAR WITH A 2 1/2" ALUMINUM CAP, LS24963
- ~ WELL HEAD
- (M) ~ MEASURED IN FIELD
- (R) ~ RECORD GLO DATA, 1922
- L ~ 90° SYMBOL
- WC ~ WITNESS CORNER

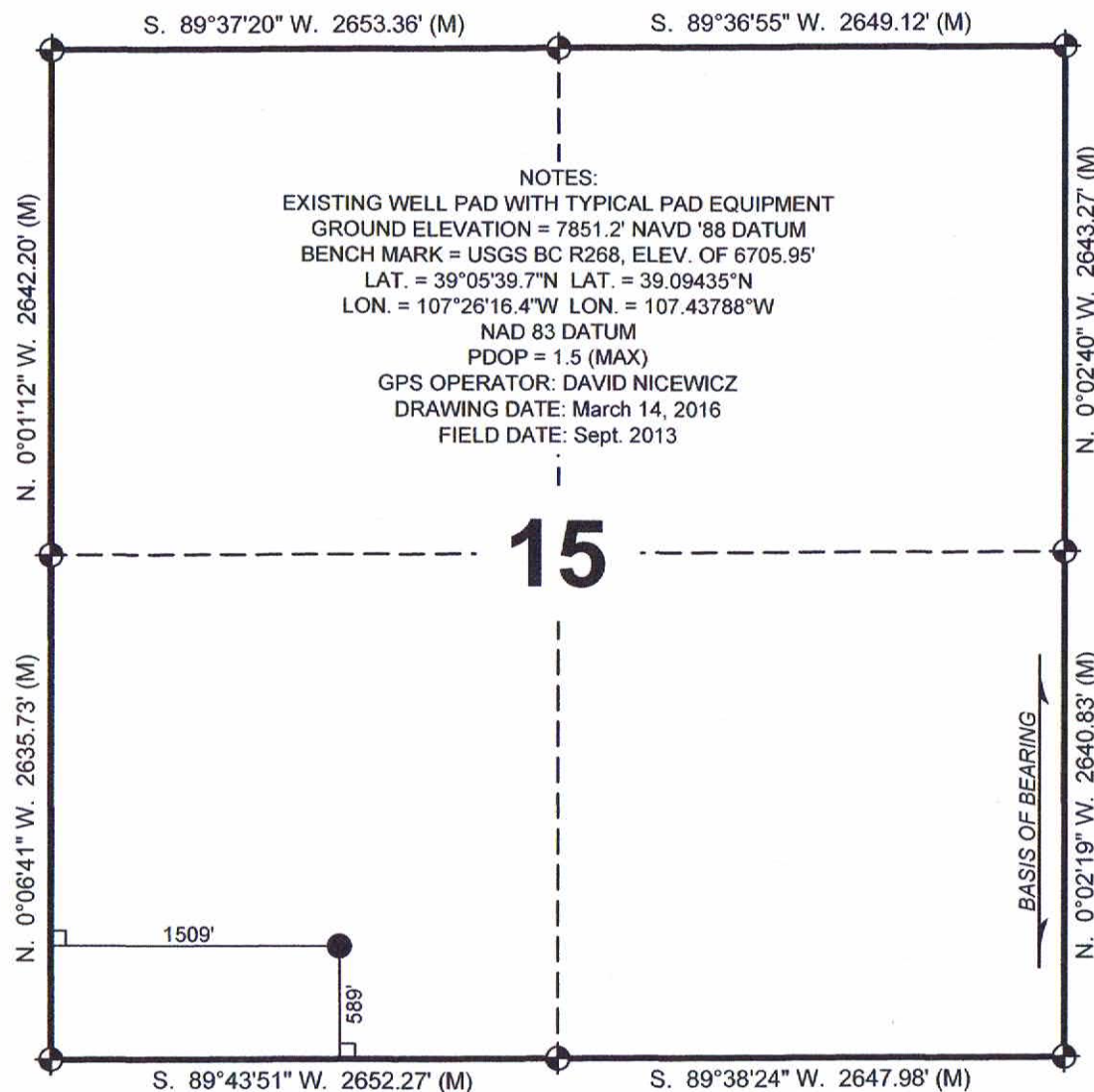
BASIS OF BEARING:

THE LINE FROM THE SE CORNER TO THE E 1/4 CORNER OF SECTION 15, TOWNSHIP 11 SOUTH, RANGE 90 WEST, 6TH P.M., WAS ASSUMED TO BEAR N. 0°19'48" E. AS MONUMENTED AND SHOWN HEREON.

CERTIFICATE OF SURVEY:

I, David G. Nicewicz, a Registered Land Surveyor in the State of Colorado, do hereby certify that the survey represented by this plat was made under my direction and supervision, and that this plat accurately represents this survey.

David G. Nicewicz P.L.S. No. 24963
(for and on behalf of AECOM)



NOTES:
EXISTING WELL PAD WITH TYPICAL PAD EQUIPMENT
GROUND ELEVATION = 7851.2' NAVD '88 DATUM
BENCH MARK = USGS BC R268, ELEV. OF 6705.95'
LAT. = 39°05'39.7"N LAT. = 39.09435°N
LON. = 107°26'16.4"W LON. = 107.43788°W
NAD 83 DATUM
PDOP = 1.5 (MAX)
GPS OPERATOR: DAVID NICEWICZ
DRAWING DATE: March 14, 2016
FIELD DATE: Sept. 2013

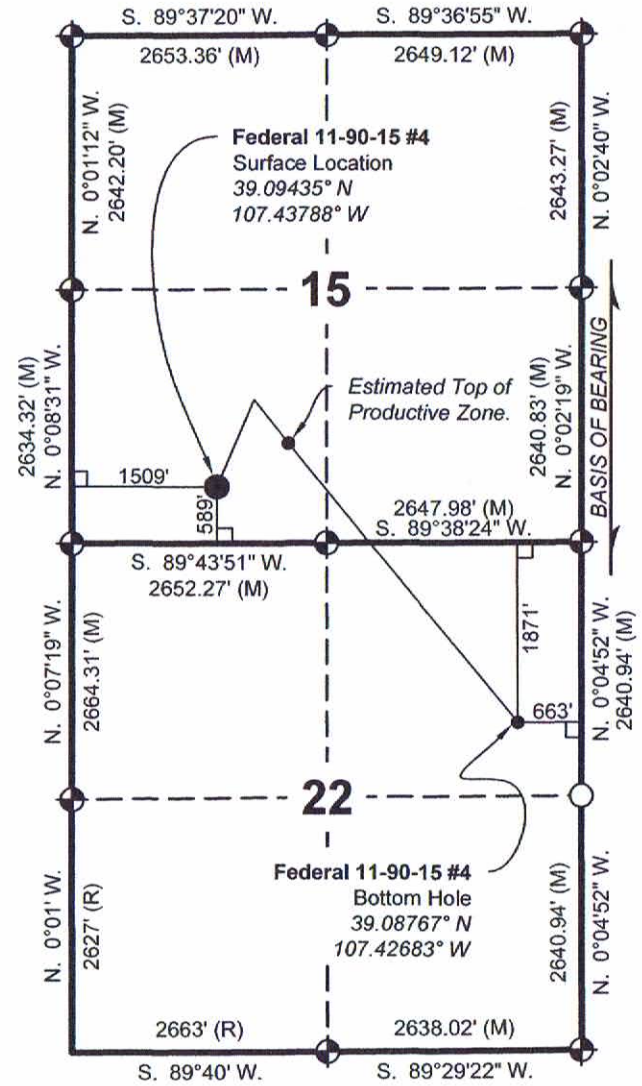
AECOM OF GLENWOOD SPRINGS COLORADO, has in accordance with a request from ERIC SANFORD, for SG INTERESTS I, LTD, determined the location of FEDERAL 11-90-15 #4 SURFACE LOCATION to be 589 FSL & 1509 FWL Section 15, Township 11 South, Range 90 West, of the Sixth Principal Meridian, Gunnison County, Colorado.

GAS WELL LOCATION PLAT

FEDERAL 11-90-15 #4
SURFACE LOCATION

Located in the SE 1/4 Section 15, T. 11 S., R. 90 W.,
Sixth P.M., Gunnison County, Colorado

| | | |
|-------------------------|-------------------------|---|
| SURVEYED BY: DGN | DWG DATE: 03/14/2016 | AECOM David G. Nicewicz, PLS |
| DRAFTED BY: MLD | SCALE: 1" = 1000' | 804 Colorado Ave, Suite 201 Glenwood Springs Co 81610 cell: (720) 456-1104 email: david.nicewicz@aecom.com |
| JOB NO.: 22243490.01000 | SHEET NO. 1 of 1 | |



LEGEND

- ◆ ~ FOUND ORIGINAL STONE
- ~ FOUND GLO BRASS CAP ON STEEL POST
- ⊕ ~ FOUND REBAR AND CAP BY LS15710
- ~ FOUND No.6 REBAR WITH A 2 1/2" ALUMINUM CAP, LS24963
- ~ WELL HEAD
- (M) ~ MEASURED IN FIELD
- (R) ~ RECORD GLO DATA, 1922
- └ ~ 90° SYMBOL
- WC ~ WITNESS CORNER

BASIS OF BEARING:

THE LINE FROM THE SE CORNER TO THE E 1/4 CORNER OF SECTION 15, TOWNSHIP 11 SOUTH, RANGE 90 WEST, 6TH P.M., WAS ASSUMED TO BEAR N. 0°19'48" E. AS MONUMENTED AND SHOWN HEREON.

CERTIFICATE OF SURVEY:

I, David G. Nicewicz, a Registered Land Surveyor in the State of Colorado, do hereby certify that the survey represented by this plat was made under my direction and supervision, and that this plat accurately represents this survey.

David G. Nicewicz P.L.S. No. 24963
(for and on behalf of AECOM)



GAS WELL LOCATION PLAT

**FEDERAL 11-90-15 #4
BOTTOM HOLE LOCATION**
Located in the NE 1/4 Section 22, T. 11 S., R. 90 W.,
Sixth P.M., Gunnison County, Colorado

| | | | | | |
|-------------------------|--|-------------------------|--|--|--|
| SURVEYED BY: DGN | | DWG DATE: 03/14/2016 | | AECOM David G. Nicewicz, PLS 804 Colorado Ave, Suite 201 Glenwood Springs Co 81610 cell: (720) 456-1104 email: david.nicewicz@aecom.com | |
| DRAFTED BY: MLD | | SCALE: 1" = 2000' | | | |
| JOB NO.: 22243490.01000 | | | | SHEET NO. 1 of 1 | |

AECOM OF GLENWOOD SPRINGS COLORADO, has in accordance with a request from ERIC SANFORD, for SG INTERESTS I, LTD, determined the location of **FEDERAL 11-90-15 #4 BOTTOM HOLE** to be 1871 FNL & 663 FEL Section 22, Township 11 South, Range 90 West, of the Sixth Principal Meridian, Gunnison County, Colorado.