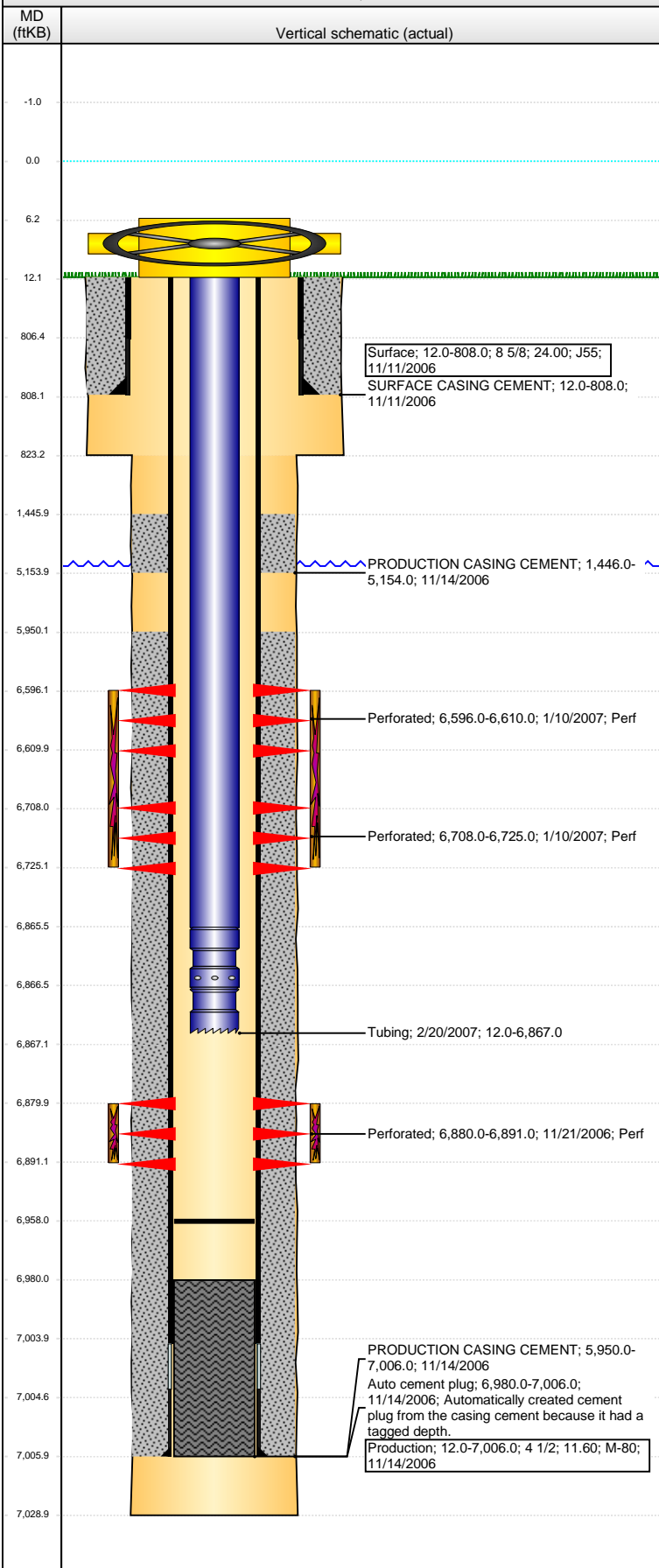


Well Name: CECIL USX A01-16

VERTICAL - ORIGINAL HOLE, 3/17/2016 4:17:11 PM



Well Header								
API 05-123-24339		Business Unit DJ BASIN		District 15		Well Config VERTICAL		
Original KB Elevation (ft) 4,727		KB - GL / MSL (ftKB) 12.00		Spud Date 11/10/2006		P & A Date		
Comment								
Directions To Well								
Congressional Location								
Quarter 1	Quarter 2	Quarter 3	Quarter 4	Section	Township	Twnshp N...	Range	Rng E/W Dir
		SE	SE	1	6	N	64	W
Bottom Hole Location								
North-South Distance (ft)		From N or S Line		East-West Distance (ft)			From E or W Line	
Plug Back Total Depths								
Date	Depth (ftKB)	Method			Com			
11/13/2006	7,005.0	FLOAT COLLAR						
11/20/2006	6,980.0	CASED HOLE LOG						
2/15/2007	6,958.0	TAG						
Wellbore Sections								
Section Des			Size (in)		Act Top, MD (ftKB)		Act Btm, MD (ftKB)	
SURFACE			12 1/4		12.0		823.0	
PRODUCTION			7 7/8		823.0		7,029.0	
Zone Statuses								
Zone Name	Status Date	Status	Fluid Type	Job	Prod Method			
NBRR	1/10/2007	PR						
CODL	1/10/2007	PR						
Casing Strings								
Surface, 808.0ftKB								
Casing Description		Run Date	OD (in)	Wt/Len (l...	Grade	Top, MD (ft...	MD (ftKB)	
Surface		11/11/2006	8 5/8	24.00	J55	12.0	808.0	
Production, 7,006.0ftKB								
Casing Description		Run Date	OD (in)	Wt/Len (l...	Grade	Top, MD (ft...	MD (ftKB)	
Production		11/14/2006	4 1/2	11.60	M-80	12.0	7,006.0	
Cement								
Description					Top Depth (ftKB)		Bottom Depth (ftKB)	
SURFACE CASING CEMENT					12.0		808.0	
Description					Top Depth (ftKB)		Bottom Depth (ftKB)	
PRODUCTION CASING CEMENT					1,446.0		5,154.0	
Description					Top Depth (ftKB)		Bottom Depth (ftKB)	
PRODUCTION CASING CEMENT					5,950.0		7,006.0	
Tubing Strings								
Tubing Description		Run Date	String...	ID (in)	Wt (lb/ft)	Grade	Len (ft)	Set De...
Tubing		2/20/2007	2 3/8	1.995	4.70	J-55	6,855.00	
Tubing Components								
Item Des		OD (in)	Wt (lb/ft)	Grade	Jts	Len (ft)	Btm (ftKB)	Btm (TVD) (ftKB)
EUE 8rd Tubing		2 3/8	4.70	J-55	209	6,853.40	6,865.4	
Seal Nipple		2 3/8			1	1.10	6,866.5	
Notched collar		2 3/8			1	0.50	6,867.0	
Perforation Data								
Zone		Bnch/St g	Entered Shot Total	Top (ftKB)		Btm (ftKB)		Date
NBRR, ORIGINAL HOLE			84	6,596.00		6,610.00		1/10/2007
NBRR, ORIGINAL HOLE			102	6,708.00		6,725.00		1/10/2007
CODL, ORIGINAL HOLE			44	6,880.00		6,891.00		11/21/2006
Stimulations & Treatments								
Date	Zone			Primary Job Type				
1/10/2007	CODL, ORIGINAL HOLE							
Technical Result			Tech Result Details			Tech Result Note		
Comment								
2nd attempt originally the sand master wouldn't start and job was delayed a day.								
Date	Zone			Primary Job Type				
1/10/2007	NBRR, ORIGINAL HOLE							
Technical Result			Tech Result Details			Tech Result Note		
Comment								
2nd attempt originally the sand master wouldn't start and job was delayed a day.								

Well Name: CECIL USX A01-16

VERTICAL - ORIGINAL HOLE, 3/17/2016 4:17:14 PM

Other In Hole

Run Date	Des	OD (in)	Top (ftKB)	Btm (ftKB)

Logs

Date	Type	Top, MD (ftKB)	Btm, MD (ftKB)
11/14/2006		12.0	7,029.0
11/14/2006	INDUCTION	12.0	7,029.0
11/20/2006	CEMENT BOND	1,270.0	6,980.0
1/13/2012	GYRO	12.0	6,800.0

