

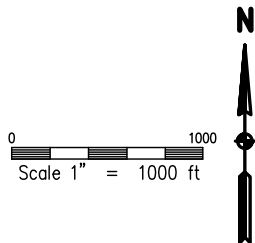
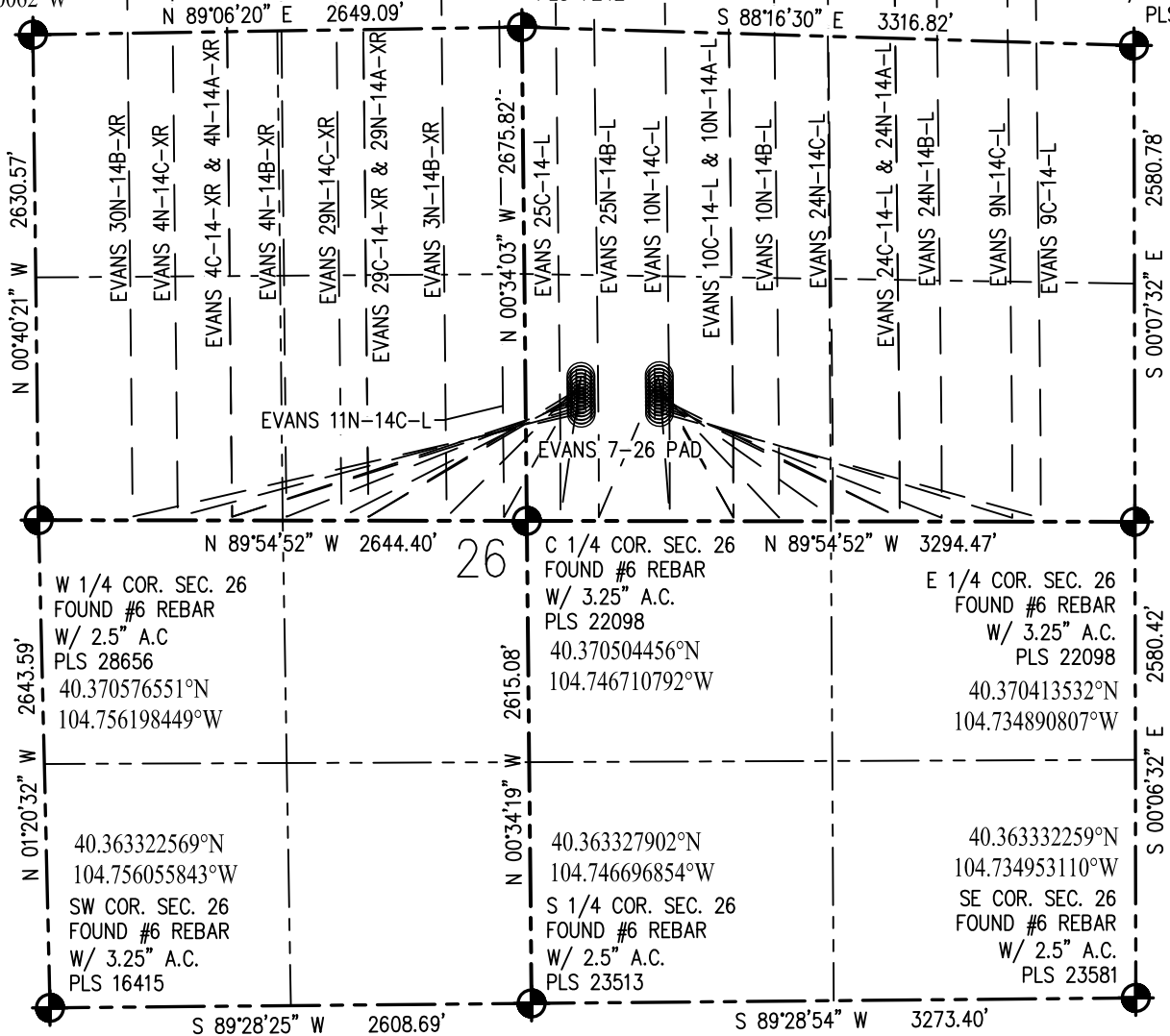
NW COR. SEC. 26  
FOUND #6 REBAR  
W/ 3.25" A.C.  
PLS 37947  
40.377795555°N  
104.756230062°W

# MULTI WELL PAD PLAN



THIS MAP DOES NOT REPRESENT A BOUNDARY SURVEY

N 1/4 COR. SEC. 26  
FOUND #6 REBAR  
W/ 3.25" A.C.  
PLS 7242

NE COR. SEC. 26  
FOUND #6 REBAR  
W/ 3.25" A.C.  
PLS 10855

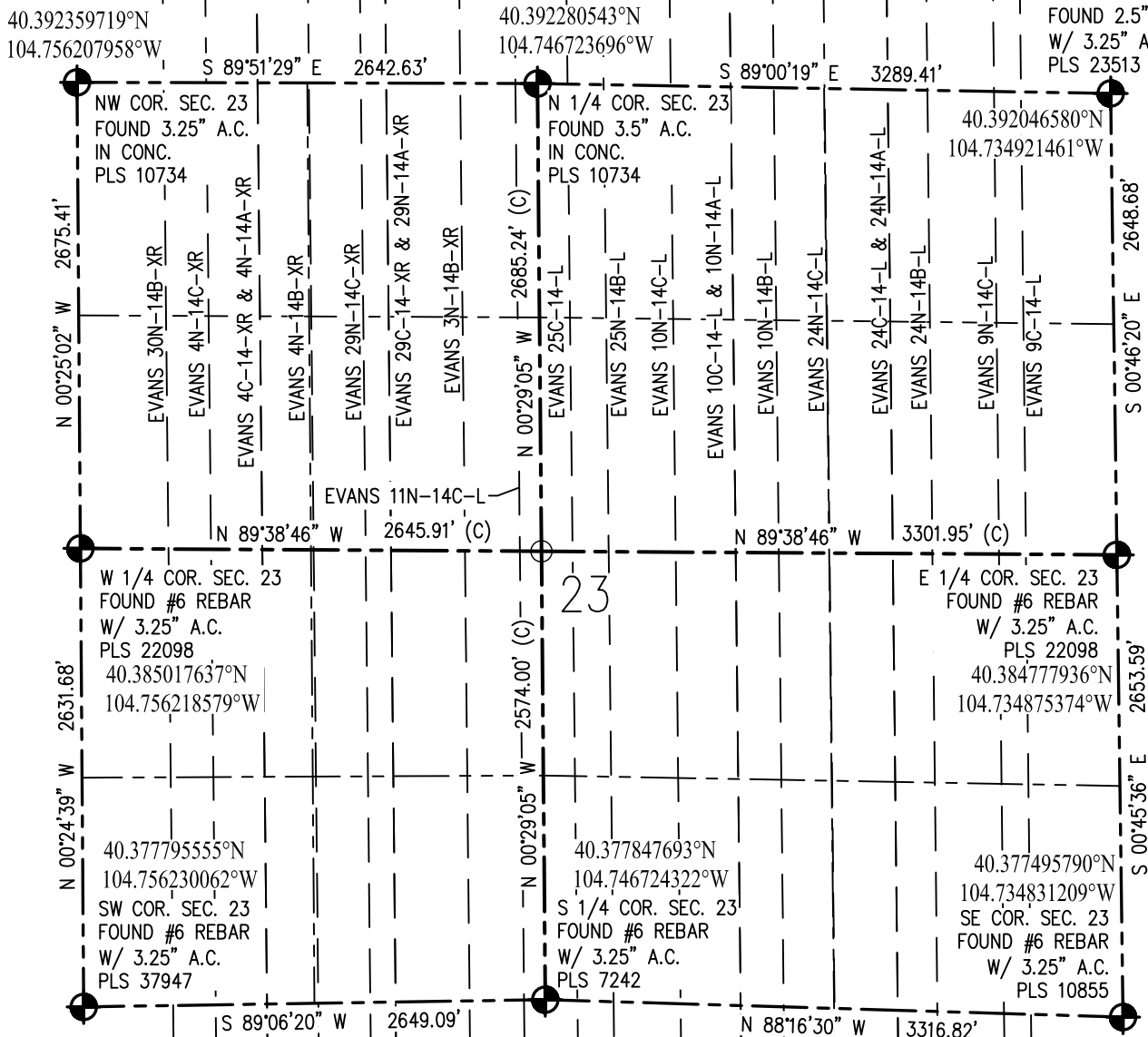


## LEGEND

-  - FOUND/SET SURVEY MONUMENT PER MONUMENT RECORD EXCEPTIONS NOTED.
-  - CALCULATED SURVEY MONUMENT POSITION
- (C) - CALCULATED DIMENSION

**MULTI WELL PAD PLAN**

THIS MAP DOES NOT REPRESENT A BOUNDARY SURVEY



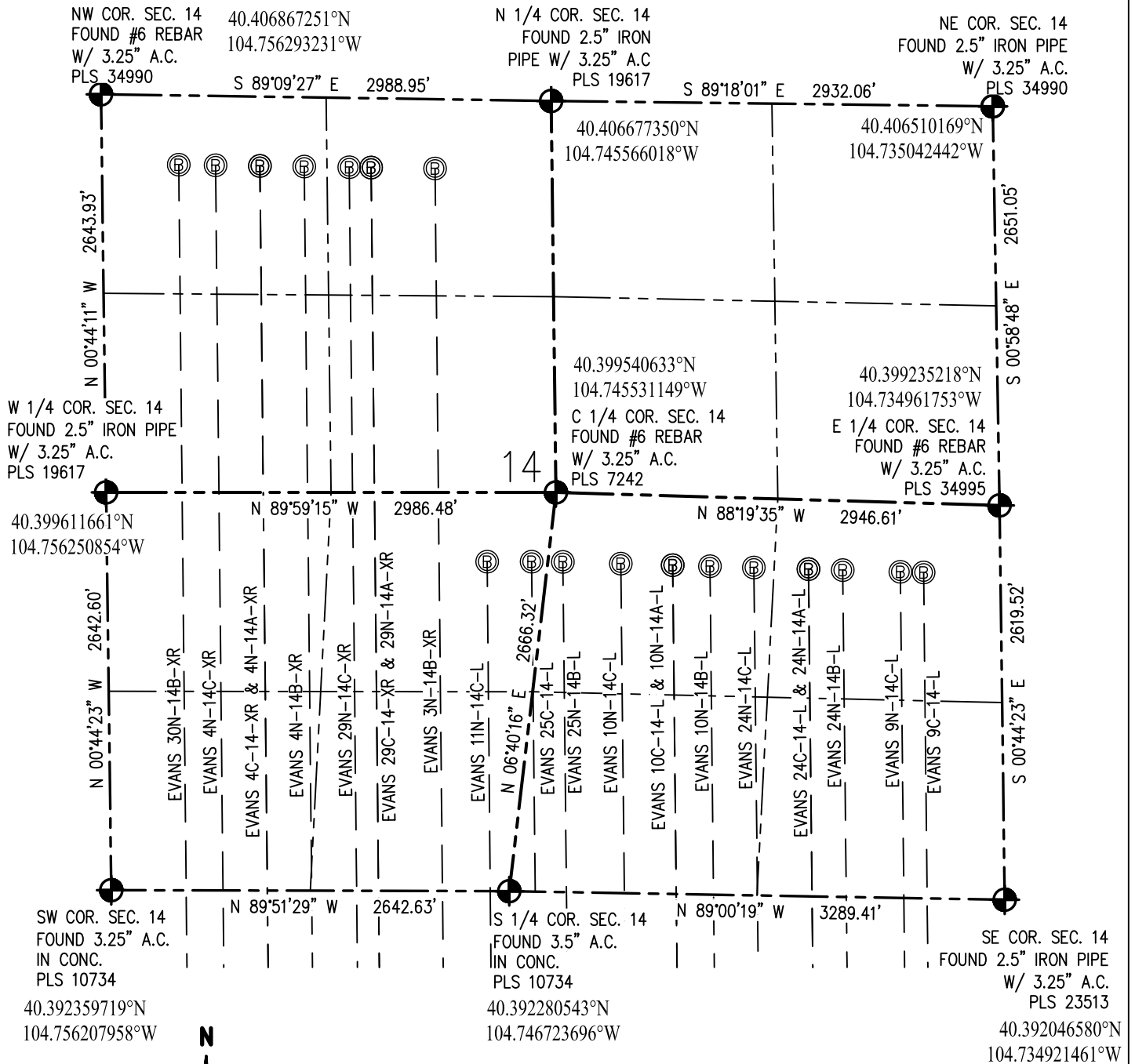
0 1000  
Scale 1" = 1000 ft


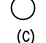
**LEGEND**

- - FOUND/SET SURVEY MONUMENT PER MONUMENT RECORD EXCEPTIONS NOTED.
- - CALCULATED SURVEY MONUMENT POSITION
- (c) - CALCULATED DIMENSION

**MULTI WELL PAD PLAN**

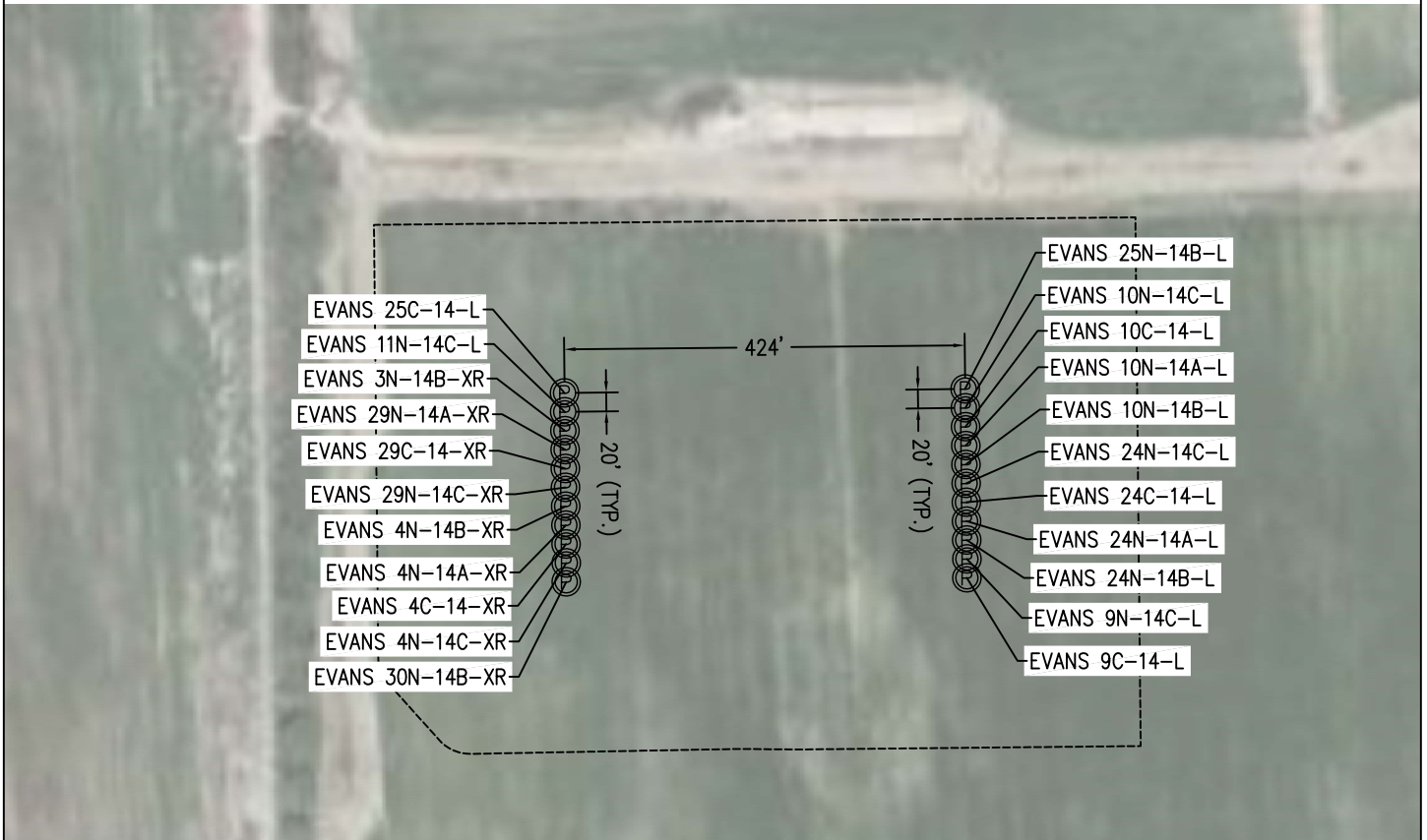
THIS MAP DOES NOT REPRESENT A BOUNDARY SURVEY

**LEGEND**

-  - FOUND/SET SURVEY MONUMENT PER MONUMENT RECORD EXCEPTIONS NOTED.
-  - CALCULATED SURVEY MONUMENT POSITION
- (C) - CALCULATED DIMENSION

**MULTI WELL PAD PLAN**

THIS MAP DOES NOT REPRESENT A BOUNDARY SURVEY



0 200  
Scale 1" = 200 ft



## MULTI WELL PAD PLAN

SURFACE HOLE LOCATION				
WELL NAME	LATITUDE	LONGITUDE	FNL/FSL	FWL/FEL
EVANS 30N-14B-XR	40.372097	-104.745634	2082 FNL	2998 FEL
EVANS 4N-14C-XR	40.372152	-104.745634	2062 FNL	2998 FEL
EVANS 4C-14-XR	40.372207	-104.745634	2042 FNL	2998 FEL
EVANS 4N-14A-XR	40.372262	-104.745634	2022 FNL	2998 FEL
EVANS 4N-14B-XR	40.372317	-104.745634	2002 FNL	2998 FEL
EVANS 29N-14C-XR	40.372372	-104.745634	1982 FNL	2999 FEL
EVANS 29C-14-XR	40.372426	-104.745634	1962 FNL	2999 FEL
EVANS 29N-14A-XR	40.372481	-104.745634	1942 FNL	2999 FEL
EVANS 3N-14B-XR	40.372536	-104.745634	1922 FNL	2999 FEL
EVANS 11N-14C-L	40.372591	-104.745634	1902 FNL	2999 FEL
EVANS 25C-14-L	40.372646	-104.745635	1882 FNL	2999 FEL
EVANS 25N-14B-L	40.372648	-104.744113	1865 FNL	2575 FEL
EVANS 10N-14C-L	40.372593	-104.744113	1885 FNL	2575 FEL
EVANS 10C-14-L	40.372538	-104.744113	1905 FNL	2575 FEL
EVANS 10N-14A-L	40.372483	-104.744113	1925 FNL	2575 FEL
EVANS 10N-14B-L	40.372428	-104.744113	1945 FNL	2575 FEL
EVANS 24N-14C-L	40.372373	-104.744112	1965 FNL	2575 FEL
EVANS 24C-14-L	40.372318	-104.744112	1985 FNL	2574 FEL
EVANS 24N-14A-L	40.372263	-104.744112	2005 FNL	2574 FEL
EVANS 24N-14B-L	40.372209	-104.744112	2025 FNL	2574 FEL
EVANS 9N-14C-L	40.372154	-104.744112	2045 FNL	2574 FEL
EVANS 9C-14-L	40.372099	-104.744113	2065 FNL	2574 FEL

TOP OF PRODUCTION ZONE				
WELL NAME	LATITUDE	LONGITUDE	FNL/FSL	FWL/FEL
EVANS 30N-14B-XR	40.371825	-104.754374	2179 FNL	510 FWL
EVANS 4N-14C-XR	40.371819	-104.753497	2183 FNL	754 FWL
EVANS 4C-14-XR	40.371811	-104.752441	2188 FNL	1049 FWL
EVANS 4N-14A-XR	40.371811	-104.752441	2188 FNL	1049 FWL
EVANS 4N-14B-XR	40.371803	-104.751385	2193 FNL	1343 FWL
EVANS 29N-14C-XR	40.371794	-104.750314	2199 FNL	1642 FWL
EVANS 29C-14-XR	40.371790	-104.749792	2201 FNL	1787 FWL
EVANS 29N-14A-XR	40.371790	-104.749792	2201 FNL	1787 FWL
EVANS 3N-14B-XR	40.371779	-104.748269	2208 FNL	2211 FWL
EVANS 11N-14C-L	40.371770	-104.747156	2214 FNL	2522 FWL
EVANS 25C-14-L	40.371762	-104.746044	2209 FNL	3111 FEL
EVANS 25N-14B-L	40.371756	-104.745300	2203 FNL	2904 FEL
EVANS 10N-14C-L	40.371746	-104.743921	2192 FNL	2520 FEL
EVANS 10C-14-L	40.371736	-104.742685	2182 FNL	2175 FEL
EVANS 10N-14A-L	40.371736	-104.742685	2182 FNL	2175 FEL
EVANS 10N-14B-L	40.371729	-104.741797	2175 FNL	1928 FEL
EVANS 24N-14C-L	40.371721	-104.740752	2166 FNL	1637 FEL
EVANS 24C-14-L	40.371711	-104.739452	2156 FNL	1274 FEL
EVANS 24N-14A-L	40.371711	-104.739452	2156 FNL	1274 FEL
EVANS 24N-14B-L	40.371705	-104.738636	2150 FNL	1047 FEL
EVANS 9N-14C-L	40.371694	-104.737264	2139 FNL	664 FEL
EVANS 9C-14-L	40.371690	-104.736710	2134 FNL	510 FEL

BOTTOM HOLE LOCATION				
WELL NAME	LATITUDE	LONGITUDE	FNL/FSL	FWL/FEL
EVANS 30N-14B-XR	40.405572	-104.754455	460 FNL	510 FWL
EVANS 4N-14C-XR	40.405557	-104.753577	460 FNL	754 FWL
EVANS 4C-14-XR	40.405538	-104.752521	460 FNL	1049 FWL
EVANS 4N-14A-XR	40.405538	-104.752521	460 FNL	1049 FWL
EVANS 4N-14B-XR	40.405519	-104.751464	460 FNL	1343 FWL
EVANS 29N-14C-XR	40.405500	-104.750392	460 FNL	1642 FWL
EVANS 29C-14-XR	40.405491	-104.749870	460 FNL	1787 FWL
EVANS 29N-14A-XR	40.405491	-104.749870	460 FNL	1787 FWL
EVANS 3N-14B-XR	40.405464	-104.748347	460 FNL	2211 FWL
EVANS 11N-14C-L	40.398289	-104.747184	2188 FSL	2524 FWL
EVANS 25C-14-L	40.398282	-104.746125	2191 FSL	2819 FWL
EVANS 25N-14B-L	40.398273	-104.745380	2193 FSL	2904 FEL
EVANS 10N-14C-L	40.398233	-104.744000	2188 FSL	2520 FEL
EVANS 10C-14-L	40.398198	-104.742764	2184 FSL	2175 FEL
EVANS 10N-14A-L	40.398198	-104.742764	2184 FSL	2175 FEL
EVANS 10N-14B-L	40.398172	-104.741876	2181 FSL	1928 FEL
EVANS 24N-14C-L	40.398142	-104.740830	2178 FSL	1637 FEL
EVANS 24C-14-L	40.398104	-104.739529	2173 FSL	1274 FEL
EVANS 24N-14A-L	40.398104	-104.739529	2173 FSL	1274 FEL
EVANS 24N-14B-L	40.398080	-104.738713	2171 FSL	1047 FEL
EVANS 9N-14C-L	40.398041	-104.737340	2166 FSL	664 FEL
EVANS 9C-14-L	40.398025	-104.736786	2164 FSL	510 FEL