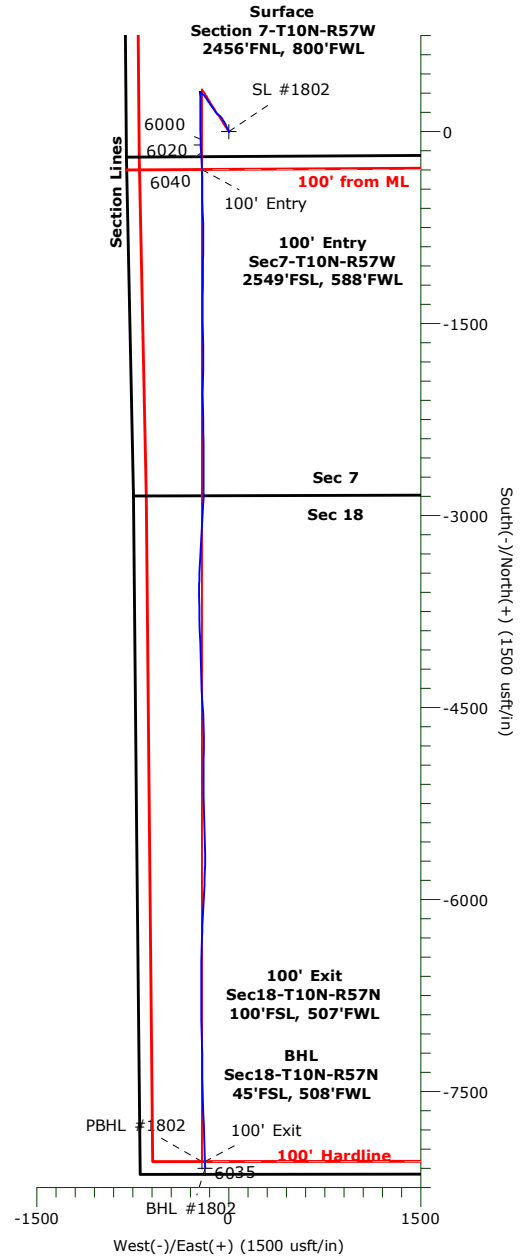
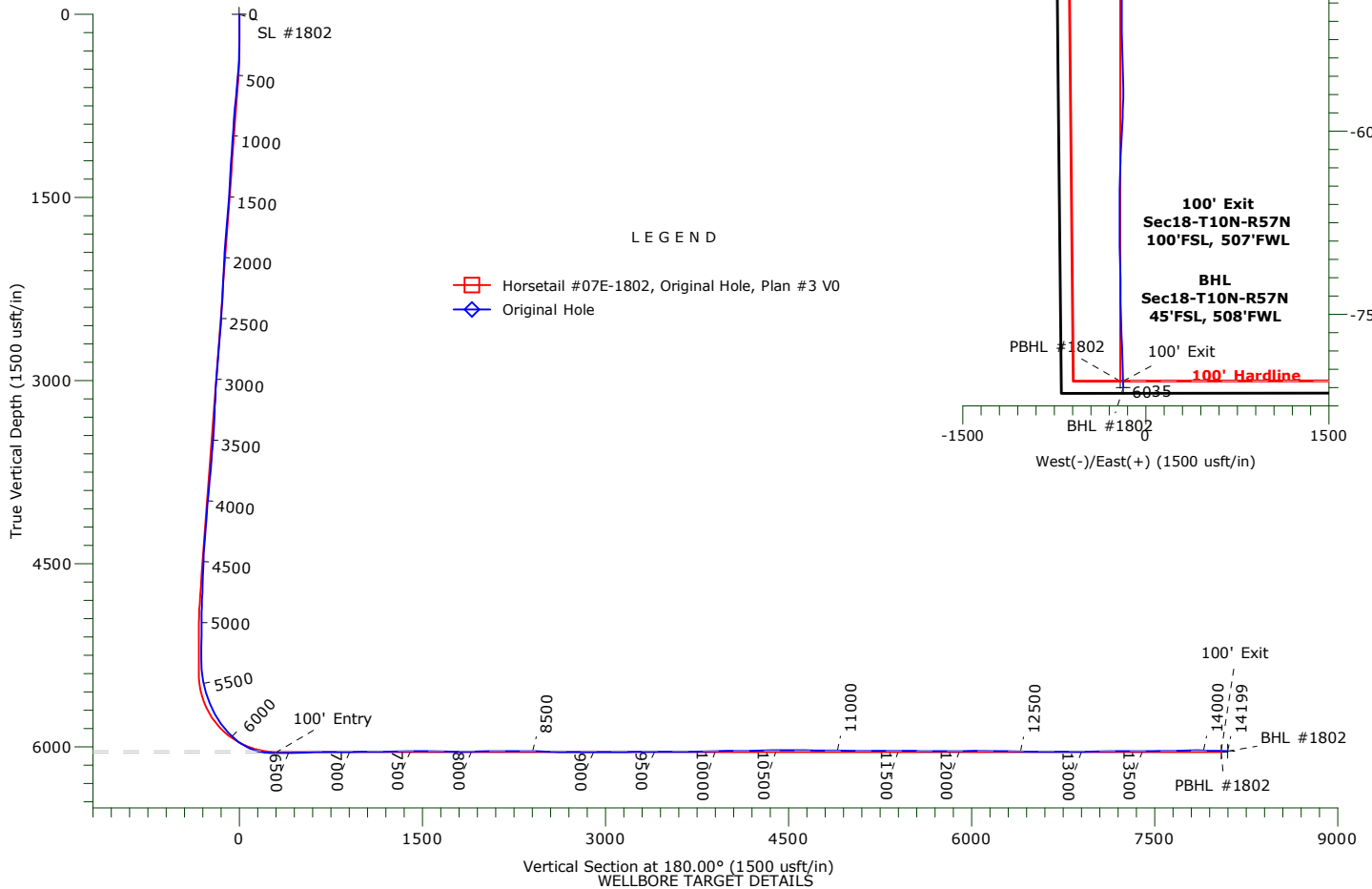




**WHITING PETROLEUM CORP.**  
**Project: Weld County, CO**  
**Site: Sec 7-T10N-R57W**  
**Well: Horsetail #07E-1802**  
**Wellbore: Original Hole**  
**Design: Original Hole**



TVD	MD	+N/-S	+E/-W	Annotation
6051.91	6390.00	-294.42	-209.11	100' Entry
6033.98	14144.00	-8044.58	-186.39	100' Exit



# **WHITING PETROLEUM CORP.**

**Weld County, CO**

**Sec 7-T10N-R57W**

**Horsetail #07E-1802**

**Original Hole**

**Design: Original Hole**

## **Standard Survey Report**

**18 January, 2016**

# Precision Drilling Corporation

## Survey Report

<b>Company:</b> WHITING PETROLEUM CORP.	<b>Local Co-ordinate Reference:</b> Well Horsetail #07E-1802
<b>Project:</b> Weld County, CO	<b>TVD Reference:</b> 4925.6'GL+21'KB @ 4946.60usft (Unit 409)
<b>Site:</b> Sec 7-T10N-R57W	<b>MD Reference:</b> 4925.6'GL+21'KB @ 4946.60usft (Unit 409)
<b>Well:</b> Horsetail #07E-1802	<b>North Reference:</b> True
<b>Wellbore:</b> Original Hole	<b>Survey Calculation Method:</b> Minimum Curvature
<b>Design:</b> Original Hole	<b>Database:</b> Compass_US

<b>Project</b> Weld County, CO	
<b>Map System:</b> US State Plane 1983	<b>System Datum:</b> Mean Sea Level
<b>Geo Datum:</b> North American Datum 1983	
<b>Map Zone:</b> Colorado Northern Zone	

<b>Site</b> Sec 7-T10N-R57W		
<b>Site Position:</b>	<b>Northing:</b> 1,558,398.04 usft	<b>Latitude:</b> 40.853825°N
<b>From:</b> Lat/Long	<b>Easting:</b> 3,469,889.54 usft	<b>Longitude:</b> 103.801372°W
<b>Position Uncertainty:</b> 0.00 usft	<b>Slot Radius:</b> 13.20 in	<b>Grid Convergence:</b> 1.10 °

<b>Well</b> Horsetail #07E-1802		
<b>Well Position</b> +N/-S 0.00 usft	<b>Northing:</b> 1,558,447.78 usft	<b>Latitude:</b> 40.853958°N
+E/-W 0.00 usft	<b>Easting:</b> 3,469,950.08 usft	<b>Longitude:</b> 103.801150°W
<b>Position Uncertainty</b> 0.00 usft	<b>Wellhead Elevation:</b> 0.00 usft	<b>Ground Level:</b> 4,925.60 usft

<b>Wellbore</b> Original Hole					
<b>Magnetics</b>	<b>Model Name</b>	<b>Sample Date</b>	<b>Declination (°)</b>	<b>Dip Angle (°)</b>	<b>Field Strength (nT)</b>
	IGRF2015	02/07/16	7.86	67.40	52,879

<b>Design</b> Original Hole					
<b>Audit Notes:</b>					
<b>Version:</b> 1.0	<b>Phase:</b> ACTUAL	<b>Tie On Depth:</b> 0.00			
<b>Vertical Section:</b>	<b>Depth From (TVD) (usft)</b>	<b>+N/-S (usft)</b>	<b>+E/-W (usft)</b>	<b>Direction (°)</b>	
	0.00	0.00	0.00	180.00	

<b>Survey Program</b>		<b>Date</b> 01/18/16		
<b>From (usft)</b>	<b>To (usft)</b>	<b>Survey (Wellbore)</b>	<b>Tool Name</b>	<b>Description</b>
130.00	14,136.00	Survey #1 (Original Hole)	MWD+IFR1+MS	Fixed:v2:crustal dec & 3-axis correction
14,199.00	14,199.00	Survey #2 (Original Hole)	BLIND	OWSG BLIND

<b>Survey</b>										
Measured Depth (usft)	Inclination (°)	Azimuth (°)	Vertical Depth (usft)	+N/-S (usft)	+E/-W (usft)	Vertical Section (usft)	Dogleg Rate (°/100usft)	Build Rate (°/100usft)	Turn Rate (°/100usft)	
0.00	0.00	0.00	0.00	0.00	0.00	0.00	0.00	0.00	0.00	0.00
<b>SL #1802</b>										
130.00	0.45	96.82	130.00	-0.06	0.50	0.06	0.34	0.34	0.00	
221.00	0.64	115.37	220.99	-0.32	1.31	0.32	0.29	0.22	20.38	
313.00	1.61	326.63	312.98	0.54	1.07	-0.54	2.38	1.05	-161.68	
404.00	3.84	333.64	403.88	4.34	-0.99	-4.34	2.47	2.45	7.70	
496.00	5.35	336.19	495.58	11.02	-4.09	-11.02	1.65	1.63	2.77	
587.00	5.37	336.87	586.18	18.81	-7.47	-18.81	0.07	0.02	0.75	
680.00	5.48	335.10	678.76	26.84	-11.05	-26.84	0.22	0.12	-1.91	
770.00	5.45	334.69	768.36	34.60	-14.68	-34.60	0.06	-0.04	-0.45	

# Precision Drilling Corporation

## Survey Report

<b>Company:</b>	WHITING PETROLEUM CORP.	<b>Local Co-ordinate Reference:</b>	Well Horsetail #07E-1802
<b>Project:</b>	Weld County, CO	<b>TVD Reference:</b>	4925.6'GL+21'KB @ 4946.60usft (Unit 409)
<b>Site:</b>	Sec 7-T10N-R57W	<b>MD Reference:</b>	4925.6'GL+21'KB @ 4946.60usft (Unit 409)
<b>Well:</b>	Horsetail #07E-1802	<b>North Reference:</b>	True
<b>Wellbore:</b>	Original Hole	<b>Survey Calculation Method:</b>	Minimum Curvature
<b>Design:</b>	Original Hole	<b>Database:</b>	Compass_US

Survey										
Measured Depth (usft)	Inclination (°)	Azimuth (°)	Vertical Depth (usft)	+N/S (usft)	+E/W (usft)	Vertical Section (usft)	Dogleg Rate (°/100usft)	Build Rate (°/100usft)	Turn Rate (°/100usft)	
862.00	5.06	332.55	859.97	42.15	-18.42	-42.15	0.47	-0.42	-2.33	
953.00	4.65	336.77	950.64	49.10	-21.73	-49.10	0.60	-0.46	4.64	
1,045.00	4.56	334.75	1,042.35	55.83	-24.76	-55.83	0.20	-0.09	-2.20	
1,137.00	4.37	334.29	1,134.07	62.29	-27.83	-62.29	0.21	-0.21	-0.50	
1,229.00	4.05	331.00	1,225.82	68.29	-30.93	-68.29	0.43	-0.34	-3.57	
1,321.00	3.72	329.95	1,317.61	73.72	-34.00	-73.72	0.37	-0.36	-1.15	
1,413.00	3.73	329.96	1,409.41	78.89	-37.00	-78.89	0.01	0.01	0.02	
1,505.00	5.22	325.88	1,501.13	84.95	-40.84	-84.95	1.65	1.62	-4.44	
1,597.00	5.36	327.61	1,592.74	92.05	-45.49	-92.05	0.23	0.15	1.87	
1,688.00	6.10	328.50	1,683.28	99.76	-50.30	-99.76	0.82	0.82	0.98	
1,779.00	5.65	325.66	1,773.80	107.58	-55.35	-107.58	0.60	-0.50	-3.13	
1,872.00	5.06	320.24	1,866.40	114.51	-60.56	-114.51	0.83	-0.63	-5.83	
1,972.00	4.28	312.85	1,966.07	120.44	-66.11	-120.44	0.99	-0.78	-7.39	
1,986.00	4.20	311.44	1,980.03	121.13	-66.88	-121.13	0.92	-0.54	-10.07	
2,036.00	3.69	307.54	2,029.91	123.33	-69.53	-123.33	1.16	-1.03	-7.79	
2,131.00	5.00	310.12	2,124.63	127.86	-75.12	-127.86	1.40	1.38	2.71	
2,226.00	4.87	305.56	2,219.28	132.87	-81.57	-132.87	0.43	-0.14	-4.79	
2,320.00	4.66	303.66	2,312.96	137.31	-87.99	-137.31	0.28	-0.22	-2.03	
2,415.00	5.15	320.78	2,407.61	142.76	-93.91	-142.76	1.62	0.51	18.02	
2,511.00	4.78	321.03	2,503.25	149.21	-99.15	-149.21	0.39	-0.39	0.27	
2,606.00	5.92	326.46	2,597.84	156.37	-104.34	-156.37	1.31	1.19	5.72	
2,701.00	5.59	326.88	2,692.36	164.33	-109.58	-164.33	0.34	-0.34	0.44	
2,795.00	5.62	326.06	2,785.91	171.98	-114.65	-171.98	0.09	0.03	-0.87	
2,891.00	5.33	323.58	2,881.47	179.47	-119.92	-179.47	0.39	-0.30	-2.59	
2,986.00	4.82	324.45	2,976.10	186.27	-124.86	-186.27	0.54	-0.54	0.92	
3,081.00	4.05	324.95	3,070.81	192.26	-129.11	-192.26	0.81	-0.81	0.53	
3,177.00	2.98	332.35	3,166.63	197.24	-132.21	-197.24	1.21	-1.12	7.70	
3,270.00	4.07	322.39	3,259.46	202.00	-135.35	-202.00	1.34	1.18	-10.70	
3,365.00	3.40	319.07	3,354.25	206.80	-139.25	-206.80	0.75	-0.71	-3.49	
3,461.00	4.81	329.17	3,450.01	212.40	-143.18	-212.40	1.65	1.47	10.52	
3,555.00	4.56	326.86	3,543.69	218.92	-147.24	-218.92	0.33	-0.27	-2.46	
3,650.00	6.35	324.97	3,638.26	226.38	-152.32	-226.38	1.89	1.88	-1.99	
3,745.00	6.33	327.09	3,732.68	235.08	-158.18	-235.08	0.25	-0.02	2.23	
3,841.00	5.93	327.90	3,828.13	243.73	-163.70	-243.73	0.43	-0.42	0.84	
3,937.00	5.91	323.70	3,923.62	251.91	-169.25	-251.91	0.45	-0.02	-4.37	
4,033.00	5.98	326.69	4,019.10	260.07	-174.92	-260.07	0.33	0.08	3.12	
4,147.00	5.69	325.14	4,132.51	269.67	-181.41	-269.67	0.29	-0.26	-1.36	
4,242.00	5.27	325.62	4,227.08	277.13	-186.57	-277.13	0.45	-0.44	0.50	
4,337.00	5.03	323.81	4,321.69	284.09	-191.49	-284.09	0.30	-0.25	-1.90	
4,433.00	4.35	307.29	4,417.38	289.69	-196.87	-289.69	1.57	-0.71	-17.21	
4,528.00	4.28	303.40	4,512.11	293.82	-202.69	-293.82	0.32	-0.07	-4.10	
4,624.00	5.33	304.58	4,607.77	298.32	-209.35	-298.32	1.10	1.09	1.24	
4,719.00	4.42	289.65	4,702.43	302.05	-216.42	-302.05	1.64	-0.96	-15.73	

# Precision Drilling Corporation

## Survey Report

<b>Company:</b>	WHITING PETROLEUM CORP.	<b>Local Co-ordinate Reference:</b>	Well Horsetail #07E-1802
<b>Project:</b>	Weld County, CO	<b>TVD Reference:</b>	4925.6'GL+21'KB @ 4946.60usft (Unit 409)
<b>Site:</b>	Sec 7-T10N-R57W	<b>MD Reference:</b>	4925.6'GL+21'KB @ 4946.60usft (Unit 409)
<b>Well:</b>	Horsetail #07E-1802	<b>North Reference:</b>	True
<b>Wellbore:</b>	Original Hole	<b>Survey Calculation Method:</b>	Minimum Curvature
<b>Design:</b>	Original Hole	<b>Database:</b>	Compass_US

Survey										
Measured Depth (usft)	Inclination (°)	Azimuth (°)	Vertical Depth (usft)	+N-S (usft)	+E-W (usft)	Vertical Section (usft)	Dogleg Rate (°/100usft)	Build Rate (°/100usft)	Turn Rate (°/100usft)	
4,815.00	3.00	317.71	4,798.23	305.15	-221.59	-305.15	2.36	-1.48	29.23	
4,910.00	0.87	342.07	4,893.18	307.68	-223.48	-307.68	2.35	-2.24	25.65	
5,005.00	0.84	15.66	4,988.17	309.04	-223.52	-309.04	0.52	-0.03	35.35	
5,101.00	0.51	321.33	5,084.16	310.05	-223.60	-310.05	0.71	-0.34	-56.59	
5,196.00	0.56	345.80	5,179.16	310.83	-223.97	-310.83	0.24	0.04	25.76	
5,291.00	0.52	311.36	5,274.15	311.56	-224.41	-311.56	0.34	-0.04	-36.26	
5,385.00	3.72	177.90	5,368.09	308.79	-224.62	-308.79	4.35	3.41	-141.98	
5,481.00	11.14	177.21	5,463.22	296.40	-224.05	-296.40	7.73	7.73	-0.71	
5,577.00	16.86	177.23	5,556.33	273.21	-222.93	-273.21	5.95	5.95	0.02	
5,671.00	22.32	180.17	5,644.86	241.73	-222.32	-241.73	5.90	5.81	3.12	
5,767.00	28.64	181.34	5,731.48	200.46	-222.91	-200.46	6.61	6.59	1.22	
5,862.00	35.07	179.32	5,812.12	150.35	-223.12	-150.35	6.86	6.77	-2.12	
5,958.00	43.30	179.79	5,886.47	89.74	-222.66	-89.74	8.57	8.56	0.49	
6,053.00	52.75	177.85	5,949.94	19.22	-221.12	-19.22	10.07	9.95	-2.04	
6,148.00	62.69	180.00	6,000.62	-60.97	-219.70	60.97	10.64	10.46	2.27	
6,209.00	69.11	177.88	6,025.51	-116.61	-218.64	116.61	10.99	10.52	-3.48	
6,244.00	74.67	176.21	6,036.39	-149.82	-216.92	149.82	16.52	15.89	-4.77	
6,276.00	81.28	174.68	6,043.05	-181.00	-214.43	181.00	21.17	20.65	-4.79	
6,340.00	86.47	178.35	6,049.88	-244.48	-210.57	244.48	9.91	8.11	5.73	
6,390.00	88.87	178.30	6,051.91	-294.42	-209.11	294.42	4.81	4.81	-0.09	
<b>100' Entry</b>										
6,435.00	91.04	178.26	6,051.95	-339.40	-207.76	339.40	4.81	4.81	-0.09	
6,530.00	91.84	179.90	6,049.56	-434.35	-206.24	434.35	1.92	0.85	1.73	
6,626.00	91.28	179.35	6,046.94	-530.31	-205.60	530.31	0.83	-0.59	-0.58	
6,721.00	91.16	178.84	6,044.92	-625.28	-204.10	625.28	0.54	-0.12	-0.53	
6,816.00	89.39	177.39	6,044.46	-720.22	-200.98	720.22	2.42	-1.87	-1.53	
6,910.00	90.37	180.12	6,044.66	-814.19	-198.93	814.19	3.09	1.04	2.91	
7,005.00	91.41	181.20	6,043.19	-909.16	-200.03	909.16	1.58	1.09	1.14	
7,101.00	90.17	180.16	6,041.87	-1,005.15	-201.17	1,005.15	1.68	-1.29	-1.08	
7,196.00	91.06	180.31	6,040.85	-1,100.14	-201.56	1,100.14	0.96	0.94	0.16	
7,291.00	90.97	180.27	6,039.16	-1,195.12	-202.05	1,195.12	0.11	-0.10	-0.04	
7,386.00	90.79	180.33	6,037.71	-1,290.11	-202.54	1,290.11	0.20	-0.19	0.06	
7,482.00	90.71	180.08	6,036.46	-1,386.10	-202.88	1,386.10	0.27	-0.08	-0.26	
7,575.00	89.77	179.69	6,036.07	-1,479.10	-202.70	1,479.10	1.09	-1.00	-0.42	
7,671.00	89.53	178.98	6,036.65	-1,575.09	-201.58	1,575.09	0.78	-0.26	-0.73	
7,767.00	88.88	179.15	6,037.98	-1,671.07	-200.02	1,671.07	0.70	-0.67	0.18	
7,862.00	89.26	180.33	6,039.52	-1,766.05	-199.59	1,766.05	1.30	0.40	1.24	
7,955.00	90.74	180.85	6,039.53	-1,859.04	-200.55	1,859.04	1.68	1.59	0.55	
8,050.00	91.50	180.77	6,037.68	-1,954.02	-201.90	1,954.02	0.81	0.80	-0.08	
8,144.00	90.25	179.96	6,036.25	-2,048.00	-202.50	2,048.00	1.59	-1.33	-0.86	
8,240.00	90.28	179.44	6,035.81	-2,144.00	-202.01	2,144.00	0.54	0.04	-0.54	
8,335.00	90.46	178.87	6,035.19	-2,238.99	-200.61	2,238.99	0.63	0.19	-0.60	
8,431.00	89.49	178.13	6,035.23	-2,334.95	-198.10	2,334.95	1.27	-1.01	-0.77	
8,526.00	88.43	180.18	6,036.95	-2,429.92	-196.70	2,429.92	2.43	-1.12	2.15	

# Precision Drilling Corporation

## Survey Report

<b>Company:</b>	WHITING PETROLEUM CORP.	<b>Local Co-ordinate Reference:</b>	Well Horsetail #07E-1802
<b>Project:</b>	Weld County, CO	<b>TVD Reference:</b>	4925.6'GL+21'KB @ 4946.60usft (Unit 409)
<b>Site:</b>	Sec 7-T10N-R57W	<b>MD Reference:</b>	4925.6'GL+21'KB @ 4946.60usft (Unit 409)
<b>Well:</b>	Horsetail #07E-1802	<b>North Reference:</b>	True
<b>Wellbore:</b>	Original Hole	<b>Survey Calculation Method:</b>	Minimum Curvature
<b>Design:</b>	Original Hole	<b>Database:</b>	Compass_US

Survey									
Measured Depth (usft)	Inclination (°)	Azimuth (°)	Vertical Depth (usft)	+N/S (usft)	+E/W (usft)	Vertical Section (usft)	Dogleg Rate (°/100usft)	Build Rate (°/100usft)	Turn Rate (°/100usft)
8,620.00	87.80	179.64	6,040.04	-2,523.87	-196.54	2,523.87	0.88	-0.67	-0.57
8,716.00	89.24	179.99	6,042.52	-2,619.83	-196.23	2,619.83	1.54	1.49	0.37
8,811.00	89.71	179.06	6,043.40	-2,714.82	-195.45	2,714.82	1.10	0.50	-0.99
8,902.00	89.17	180.41	6,044.29	-2,805.81	-195.03	2,805.81	1.60	-0.59	1.49
8,994.00	91.00	183.73	6,044.15	-2,897.74	-198.35	2,897.74	4.11	1.99	3.60
9,085.00	90.48	183.82	6,042.98	-2,988.53	-204.33	2,988.53	0.58	-0.57	0.10
9,177.00	90.13	183.14	6,042.49	-3,080.36	-209.91	3,080.36	0.83	-0.38	-0.74
9,269.00	90.02	183.19	6,042.37	-3,172.22	-214.99	3,172.22	0.13	-0.12	0.06
9,360.00	90.67	183.22	6,041.82	-3,263.08	-220.07	3,263.08	0.72	0.72	0.03
9,452.00	89.77	182.83	6,041.47	-3,354.95	-224.92	3,354.95	1.07	-0.99	-0.43
9,543.00	90.97	182.43	6,040.88	-3,445.85	-229.09	3,445.85	1.40	1.33	-0.44
9,634.00	90.38	180.42	6,039.80	-3,536.81	-231.35	3,536.81	2.30	-0.65	-2.21
9,726.00	89.07	179.27	6,040.24	-3,628.80	-231.10	3,628.80	1.89	-1.42	-1.25
9,818.00	90.74	179.17	6,040.39	-3,720.79	-229.84	3,720.79	1.82	1.81	-0.11
9,909.00	92.34	178.97	6,037.94	-3,811.74	-228.37	3,811.74	1.77	1.76	-0.22
10,001.00	90.86	178.62	6,035.36	-3,903.68	-226.44	3,903.68	1.65	-1.61	-0.38
10,093.00	90.65	177.72	6,034.15	-3,995.63	-223.49	3,995.63	1.01	-0.23	-0.98
10,186.00	90.41	177.56	6,033.29	-4,088.55	-219.66	4,088.55	0.32	-0.26	-0.17
10,278.00	90.76	178.63	6,032.35	-4,180.49	-216.60	4,180.49	1.22	0.38	1.16
10,370.00	90.50	177.77	6,031.35	-4,272.44	-213.71	4,272.44	0.97	-0.28	-0.93
10,461.00	91.41	177.92	6,029.84	-4,363.36	-210.29	4,363.36	1.01	1.00	0.16
10,552.00	90.30	176.50	6,028.48	-4,454.24	-205.85	4,454.24	1.98	-1.21	-1.56
10,644.00	89.27	176.29	6,028.82	-4,546.05	-200.06	4,546.05	1.14	-1.12	-0.23
10,735.00	89.74	178.48	6,029.61	-4,636.95	-195.91	4,636.95	2.46	0.51	2.41
10,826.00	89.61	179.82	6,030.13	-4,727.94	-194.56	4,727.94	1.48	-0.14	1.47
10,918.00	89.54	180.26	6,030.81	-4,819.93	-194.62	4,819.93	0.48	-0.08	0.47
11,009.00	89.64	180.45	6,031.46	-4,910.93	-195.18	4,910.93	0.24	0.10	0.21
11,100.00	89.98	180.44	6,031.77	-5,001.92	-195.89	5,001.92	0.37	0.37	-0.01
11,192.00	89.83	180.16	6,031.92	-5,093.92	-196.37	5,093.92	0.34	-0.16	-0.30
11,283.00	89.88	179.23	6,032.15	-5,184.92	-195.88	5,184.92	1.02	0.05	-1.02
11,375.00	89.73	178.87	6,032.46	-5,276.91	-194.36	5,276.91	0.42	-0.16	-0.39
11,467.00	90.23	178.07	6,032.50	-5,368.87	-191.90	5,368.87	1.02	0.54	-0.87
11,559.00	89.66	178.67	6,032.58	-5,460.84	-189.29	5,460.84	0.89	-0.61	0.65
11,651.00	88.21	178.35	6,034.29	-5,552.79	-186.89	5,552.79	1.62	-1.58	-0.35
11,743.00	89.83	179.55	6,035.87	-5,644.75	-185.20	5,644.75	2.20	1.76	1.31
11,835.00	90.27	181.53	6,035.76	-5,736.74	-186.41	5,736.74	1.58	0.35	1.54
11,927.00	90.42	181.44	6,035.35	-5,828.72	-188.17	5,828.72	0.25	0.21	-0.13
12,019.00	90.25	182.84	6,034.82	-5,920.65	-191.61	5,920.65	1.53	-0.19	1.52
12,111.00	90.93	183.29	6,033.88	-6,012.51	-196.52	6,012.51	0.89	0.74	0.49
12,203.00	89.15	182.71	6,033.82	-6,104.38	-201.28	6,104.38	2.05	-1.95	-0.64
12,295.00	89.51	183.14	6,034.91	-6,196.25	-206.03	6,196.25	0.60	0.38	0.46
12,387.00	89.08	181.67	6,036.04	-6,288.16	-209.84	6,288.16	1.68	-0.47	-1.62
12,479.00	88.71	180.99	6,037.77	-6,380.12	-211.93	6,380.12	0.86	-0.41	-0.75

# Precision Drilling Corporation

## Survey Report

<b>Company:</b>	WHITING PETROLEUM CORP.	<b>Local Co-ordinate Reference:</b>	Well Horsetail #07E-1802
<b>Project:</b>	Weld County, CO	<b>TVD Reference:</b>	4925.6'GL+21'KB @ 4946.60usft (Unit 409)
<b>Site:</b>	Sec 7-T10N-R57W	<b>MD Reference:</b>	4925.6'GL+21'KB @ 4946.60usft (Unit 409)
<b>Well:</b>	Horsetail #07E-1802	<b>North Reference:</b>	True
<b>Wellbore:</b>	Original Hole	<b>Survey Calculation Method:</b>	Minimum Curvature
<b>Design:</b>	Original Hole	<b>Database:</b>	Compass_US

Survey										
Measured Depth (usft)	Inclination (°)	Azimuth (°)	Vertical Depth (usft)	+N-S (usft)	+E-W (usft)	Vertical Section (usft)	Dogleg Rate (°/100usft)	Build Rate (°/100usft)	Turn Rate (°/100usft)	
12,580.00	89.16	180.65	6,039.48	-6,481.10	-213.25	6,481.10	0.61	0.48	-0.37	
12,672.00	89.78	180.36	6,040.34	-6,573.09	-214.06	6,573.09	0.75	0.67	-0.32	
12,765.00	89.96	180.34	6,040.56	-6,666.09	-214.62	6,666.09	0.19	0.19	-0.02	
12,855.00	90.26	180.03	6,040.39	-6,756.09	-214.91	6,756.09	0.48	0.33	-0.34	
12,947.00	90.37	179.56	6,039.89	-6,848.08	-214.59	6,848.08	0.52	0.13	-0.51	
13,038.00	90.49	178.89	6,039.21	-6,939.07	-213.36	6,939.07	0.75	0.13	-0.74	
13,129.00	90.64	178.93	6,038.31	-7,030.05	-211.63	7,030.05	0.18	0.17	0.05	
13,220.00	91.07	178.23	6,036.95	-7,121.01	-209.38	7,121.01	0.90	0.47	-0.77	
13,312.00	89.93	179.56	6,036.15	-7,212.99	-207.60	7,212.99	1.90	-1.24	1.44	
13,403.00	90.24	179.57	6,036.02	-7,303.99	-206.91	7,303.99	0.34	0.34	0.02	
13,495.00	90.38	179.23	6,035.53	-7,395.98	-205.94	7,395.98	0.40	0.16	-0.37	
13,585.00	90.48	178.50	6,034.86	-7,485.96	-204.16	7,485.96	0.81	0.11	-0.81	
13,677.00	90.96	178.26	6,033.71	-7,577.91	-201.56	7,577.91	0.59	0.52	-0.27	
13,769.00	91.23	177.81	6,031.96	-7,669.84	-198.40	7,669.84	0.57	0.29	-0.49	
13,861.00	91.06	177.62	6,030.12	-7,761.75	-194.73	7,761.75	0.27	-0.18	-0.20	
13,953.00	89.17	178.22	6,029.94	-7,853.69	-191.39	7,853.69	2.16	-2.05	0.66	
14,044.00	88.47	178.61	6,031.81	-7,944.63	-188.88	7,944.63	0.88	-0.77	0.43	
14,136.00	89.00	178.55	6,033.84	-8,036.58	-186.59	8,036.58	0.58	0.57	-0.07	
14,144.00	89.00	178.55	6,033.98	-8,044.58	-186.39	8,044.58	0.00	0.00	0.00	
<b>100' Exit</b>										
14,199.00	89.00	178.55	6,034.94	-8,099.55	-185.00	8,099.55	0.00	0.00	0.00	
<b>BHL #1802</b>										

Design Targets										
Target Name	Dip Angle (°)	Dip Dir. (°)	TVD (usft)	+N-S (usft)	+E-W (usft)	Northing (usft)	Easting (usft)	Latitude	Longitude	
SL #1802 - hit/miss target - Shape	0.00	0.00	0.00	0.00	0.00	1,558,447.78	3,469,950.08	40.853958°N	103.801150°W	
- actual wellpath hits target center										
- Point										
BHL #1802 - hit/miss target - Shape	0.00	0.00	6,034.94	-8,099.55	-185.00	1,550,346.17	3,469,920.28	40.831728°N	103.801819°W	
- actual wellpath hits target center										
- Point										

Design Annotations					
Measured Depth (usft)	Vertical Depth (usft)	Local Coordinates		Comment	
		+N-S (usft)	+E-W (usft)		
6,390.00	6,051.91	-294.42	-209.11	100' Entry	
14,144.00	6,033.98	-8,044.58	-186.39	100' Exit	