

WHITING PETROLEUM CORP.

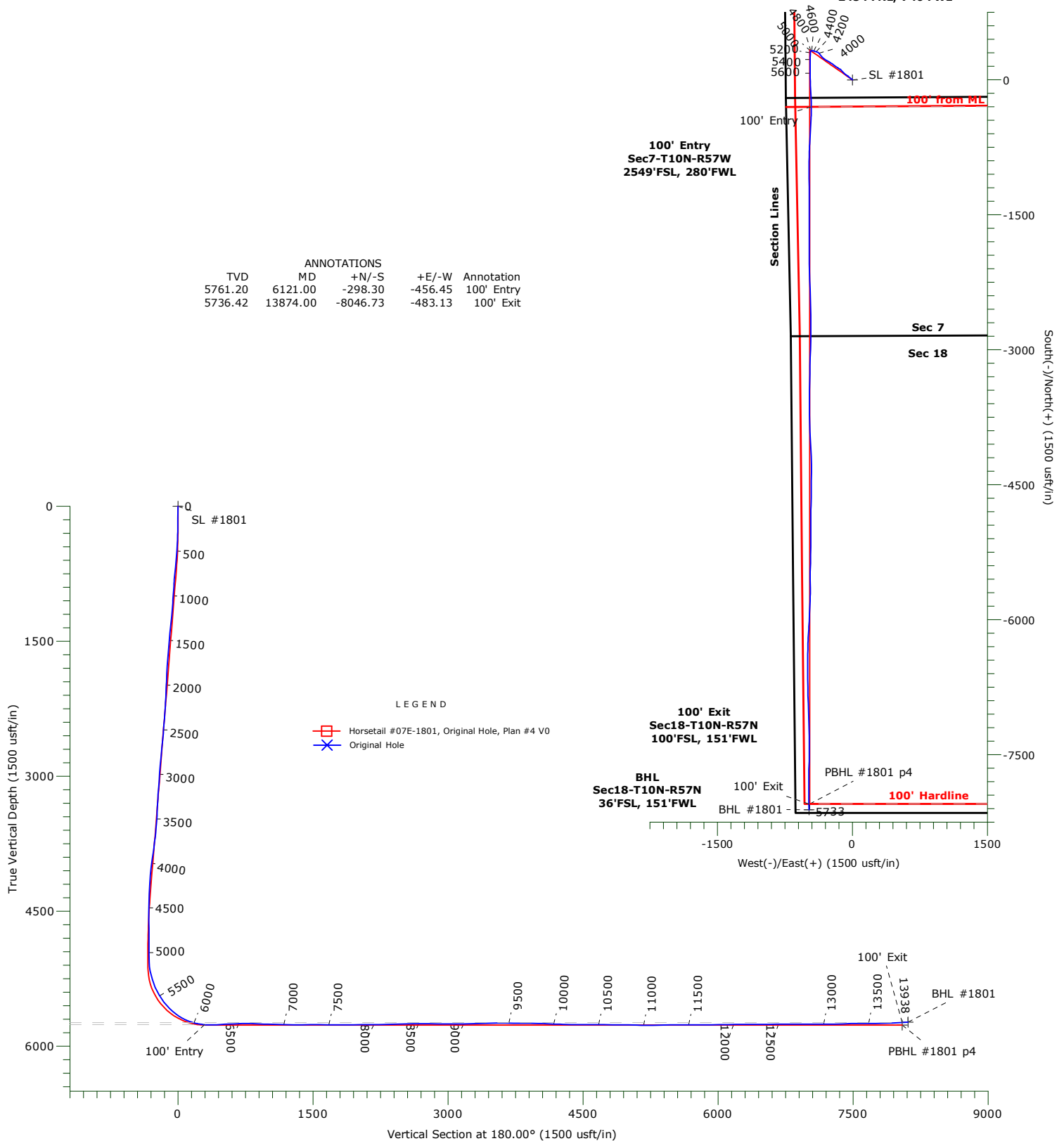
Project: Weld County, CO
Site: Sec 7-T10N-R57W
Well: Horsetail #07E-1801
Vellbore: Original Hole
Design: Original Hole



Precision

Directional Services

Surface
Section 7-T10N-R57W
2454'FNL, 740'FWL



Name	TVD	+N/-S	+E/-W	Northing	Easting	Latitude	Longitude	Shape
SL #1801	0.00	0.00	0.00	1558448.65	3469890.11	40.853964°N	103.801368°W	Point
BHL #1801	5732.70	-8110.60	-481.79	1550330.31	3469563.77	40.831703°N	103.803108°W	Point
PBHL #1801 p4	5765.00	-8046.90	-474.29	1550394.14	3469570.04	40.831878°N	103.803081°W	Point

WHITING PETROLEUM CORP.

Weld County, CO

Sec 7-T10N-R57W

Horsetail #07E-1801

Original Hole

Design: Original Hole

Standard Survey Report

13 January, 2016

Precision Drilling Corporation

Survey Report

Company:	WHITING PETROLEUM CORP.	Local Co-ordinate Reference:	Well Horsetail #07E-1801
Project:	Weld County, CO	TVD Reference:	4925.6'GL+21'KB @ 4946.6usft (Unit 409)
Site:	Sec 7-T10N-R57W	MD Reference:	4925.6'GL+21'KB @ 4946.6usft (Unit 409)
Well:	Horsetail #07E-1801	North Reference:	True
Wellbore:	Original Hole	Survey Calculation Method:	Minimum Curvature
Design:	Original Hole	Database:	Compass_US

Project	Weld County, CO		
Map System:	US State Plane 1983	System Datum:	Mean Sea Level
Geo Datum:	North American Datum 1983		
Map Zone:	Colorado Northern Zone		

Site		Sec 7-T10N-R57W				
Site Position:		Northing:	1,558,398.04 usft	Latitude:	40.853825°N	
From:	Lat/Long	Easting:	3,469,889.54 usft	Longitude:	103.801372°W	
Position Uncertainty:		0.0 usft	Slot Radius:	13.20 in	Grid Convergence:	1.10 °

Well	Horsetail #07E-1801					
Well Position	+N-S	0.0 usft	Northing:	1,558,448.66 usft	Latitude:	40.853964°N
	+E-W	0.0 usft	Easting:	3,469,890.11 usft	Longitude:	103.801367°W
Position Uncertainty		0.0 usft	Wellhead Elevation:	0.0 usft	Ground Level:	4,925.6 usft

Wellbore	Original Hole				
Magnetics	Model Name	Sample Date	Declination (°)	Dip Angle (°)	Field Strength (nT)
	IGRF2015	01/31/16	7.87	67.40	52,881

Design	Original Hole				
Audit Notes:					
Version:	1.0	Phase:	ACTUAL	Tie On Depth:	0.0
Vertical Section:	Depth From (TVD) (usft)	+N-S (usft)	+E-W (usft)	Direction (°)	
	0.0	0.0	0.0	180.00	

Survey Program	Date	01/13/16			
From (usft)	To (usft)	Survey (Wellbore)	Tool Name	Description	
131.0	13,856.0	Survey #1 (Original Hole)	MWD+IFR1+MS	Fixed:v2:crustal dec & 3-axis correction	
13,938.0	13,938.0	Survey #2 (Original Hole)	BLIND	OWSG BLIND	

Survey										
Measured Depth (usft)	Inclination (°)	Azimuth (°)	Vertical Depth (usft)	+N-S (usft)	+E-W (usft)	Vertical Section (usft)	Dogleg Rate (°/100usft)	Build Rate (°/100usft)	Turn Rate (°/100usft)	
0.0	0.00	0.00	0.0	0.0	0.0	0.0	0.00	0.00	0.00	
131.0	0.15	2.55	131.0	0.2	0.0	-0.2	0.11	0.11	0.00	
223.0	0.34	49.79	223.0	0.5	0.2	-0.5	0.29	0.21	51.35	
314.0	2.35	312.56	314.0	1.9	-0.9	-1.9	2.66	2.21	-106.85	
406.0	4.62	310.26	405.8	5.6	-5.2	-5.6	2.47	2.47	-2.50	
498.0	6.32	307.36	497.4	11.0	-12.0	-11.0	1.87	1.85	-3.15	
589.0	8.59	307.46	587.6	18.2	-21.4	-18.2	2.49	2.49	0.11	
681.0	9.10	308.32	678.5	26.9	-32.6	-26.9	0.57	0.55	0.93	
772.0	8.66	307.47	768.4	35.5	-43.6	-35.5	0.50	-0.48	-0.93	
863.0	5.37	305.75	858.7	42.2	-52.5	-42.2	3.62	-3.62	-1.89	

Precision Drilling Corporation

Survey Report

Company:	WHITING PETROLEUM CORP.	Local Co-ordinate Reference:	Well Horsetail #07E-1801
Project:	Weld County, CO	TVD Reference:	4925.6'GL+21'KB @ 4946.6usft (Unit 409)
Site:	Sec 7-T10N-R57W	MD Reference:	4925.6'GL+21'KB @ 4946.6usft (Unit 409)
Well:	Horsetail #07E-1801	North Reference:	True
Wellbore:	Original Hole	Survey Calculation Method:	Minimum Curvature
Design:	Original Hole	Database:	Compass_US

Survey

Measured Depth (usft)	Inclination (°)	Azimuth (°)	Vertical Depth (usft)	+N/-S (usft)	+E/-W (usft)	Vertical Section (usft)	Dogleg Rate (°/100usft)	Build Rate (°/100usft)	Turn Rate (°/100usft)
955.0	7.85	306.73	950.1	48.5	-61.1	-48.5	2.70	2.70	1.07
1,047.0	5.18	305.44	1,041.5	54.6	-69.5	-54.6	2.91	-2.90	-1.40
1,138.0	7.22	305.08	1,132.0	60.3	-77.5	-60.3	2.24	2.24	-0.40
1,230.0	9.39	313.78	1,223.0	68.8	-87.7	-68.8	2.72	2.36	9.46
1,322.0	8.49	315.92	1,313.9	78.9	-97.8	-78.9	1.04	-0.98	2.33
1,415.0	7.33	316.25	1,406.0	88.1	-106.7	-88.1	1.25	-1.25	0.35
1,507.0	6.84	316.27	1,497.3	96.3	-114.5	-96.3	0.53	-0.53	0.02
1,599.0	6.42	314.75	1,588.7	103.9	-122.0	-103.9	0.49	-0.46	-1.65
1,690.0	6.09	315.61	1,679.1	110.9	-129.0	-110.9	0.38	-0.36	0.95
1,781.0	6.30	305.00	1,769.6	117.2	-136.4	-117.2	1.28	0.23	-11.66
1,873.0	5.61	299.75	1,861.1	122.4	-144.5	-122.4	0.95	-0.75	-5.71
1,964.0	5.43	302.31	1,951.7	126.9	-152.0	-126.9	0.34	-0.20	2.81
1,993.0	4.45	296.68	1,980.6	128.1	-154.1	-128.1	3.77	-3.38	-19.41
2,039.0	4.19	314.27	2,026.4	130.1	-156.9	-130.1	2.92	-0.57	38.24
2,134.0	4.03	295.79	2,121.2	134.0	-162.4	-134.0	1.40	-0.17	-19.45
2,229.0	6.90	301.86	2,215.8	138.4	-170.3	-138.4	3.08	3.02	6.39
2,323.0	7.06	300.42	2,309.1	144.3	-180.1	-144.3	0.25	0.17	-1.53
2,419.0	8.16	309.04	2,404.2	151.6	-190.4	-151.6	1.65	1.15	8.98
2,514.0	7.31	306.93	2,498.4	159.5	-200.5	-159.5	0.94	-0.89	-2.22
2,609.0	10.58	305.78	2,592.2	168.2	-212.4	-168.2	3.45	3.44	-1.21
2,704.0	9.92	305.85	2,685.7	178.1	-226.1	-178.1	0.69	-0.69	0.07
2,798.0	9.53	303.79	2,778.3	187.2	-239.2	-187.2	0.56	-0.41	-2.19
2,894.0	9.01	301.06	2,873.1	195.5	-252.2	-195.5	0.71	-0.54	-2.84
2,989.0	8.46	300.57	2,967.0	202.9	-264.6	-202.9	0.58	-0.58	-0.52
3,085.0	7.48	302.74	3,062.0	209.8	-275.9	-209.8	1.07	-1.02	2.26
3,180.0	7.99	297.76	3,156.2	216.3	-287.0	-216.3	0.89	0.54	-5.24
3,273.0	6.40	297.94	3,248.4	221.7	-297.3	-221.7	1.71	-1.71	0.19
3,368.0	5.98	306.17	3,342.9	227.1	-305.9	-227.1	1.03	-0.44	8.66
3,464.0	4.71	302.73	3,438.5	232.2	-313.3	-232.2	1.36	-1.32	-3.58
3,558.0	6.85	310.03	3,532.0	237.9	-320.8	-237.9	2.40	2.28	7.77
3,653.0	8.20	314.45	3,626.2	246.3	-330.0	-246.3	1.55	1.42	4.65
3,749.0	9.62	319.64	3,721.0	257.2	-340.1	-257.2	1.70	1.48	5.41
3,844.0	10.18	320.02	3,814.6	269.7	-350.6	-269.7	0.59	0.59	0.40
3,940.0	10.65	319.82	3,909.0	282.9	-361.8	-282.9	0.49	0.49	-0.21
4,036.0	10.25	321.36	4,003.4	296.4	-372.9	-296.4	0.51	-0.42	1.60
4,131.0	9.73	293.29	4,097.0	306.2	-385.5	-306.2	5.10	-0.55	-29.55
4,251.0	9.20	289.26	4,215.4	313.3	-403.9	-313.3	0.71	-0.44	-3.36
4,347.0	8.42	285.20	4,310.3	317.7	-417.9	-317.7	1.04	-0.81	-4.23
4,442.0	7.63	282.37	4,404.3	320.9	-430.8	-320.9	0.93	-0.83	-2.98
4,537.0	7.03	274.47	4,498.6	322.7	-442.7	-322.7	1.23	-0.63	-8.32
4,633.0	3.66	259.67	4,594.1	322.6	-451.6	-322.6	3.76	-3.51	-15.42
4,728.0	3.60	250.86	4,688.9	321.1	-457.4	-321.1	0.59	-0.06	-9.27
4,824.0	1.53	280.22	4,784.9	320.3	-461.5	-320.3	2.49	-2.16	30.58

Precision Drilling Corporation

Survey Report

Company:	WHITING PETROLEUM CORP.	Local Co-ordinate Reference:	Well Horsetail #07E-1801
Project:	Weld County, CO	TVD Reference:	4925.6'GL+21'KB @ 4946.6usft (Unit 409)
Site:	Sec 7-T10N-R57W	MD Reference:	4925.6'GL+21'KB @ 4946.6usft (Unit 409)
Well:	Horsetail #07E-1801	North Reference:	True
Wellbore:	Original Hole	Survey Calculation Method:	Minimum Curvature
Design:	Original Hole	Database:	Compass_US

Survey

Measured Depth (usft)	Inclination (°)	Azimuth (°)	Vertical Depth (usft)	+N/-S (usft)	+E/-W (usft)	Vertical Section (usft)	Dogleg Rate (°/100usft)	Build Rate (°/100usft)	Turn Rate (°/100usft)
4,919.0	1.10	262.50	4,879.8	320.4	-463.7	-320.4	0.62	-0.45	-18.65
5,015.0	0.90	249.39	4,975.8	320.0	-465.3	-320.0	0.32	-0.21	-13.66
5,110.0	1.98	213.90	5,070.8	318.4	-466.9	-318.4	1.42	1.14	-37.36
5,157.0	6.31	181.59	5,117.7	315.2	-467.4	-315.2	10.12	9.21	-68.74
5,205.0	11.14	177.19	5,165.1	307.9	-467.3	-307.9	10.15	10.06	-9.17
5,301.0	16.50	181.98	5,258.3	285.0	-467.3	-285.0	5.70	5.58	4.99
5,394.0	23.70	182.28	5,345.6	253.1	-468.5	-253.1	7.74	7.74	0.32
5,490.0	30.81	181.07	5,430.8	209.1	-469.7	-209.1	7.43	7.41	-1.26
5,586.0	37.42	179.04	5,510.3	155.3	-469.7	-155.3	6.99	6.89	-2.11
5,680.0	44.82	180.58	5,581.0	93.6	-469.6	-93.6	7.95	7.87	1.64
5,727.0	49.18	180.15	5,613.1	59.2	-469.8	-59.2	9.30	9.28	-0.91
5,776.0	53.10	177.72	5,643.8	21.1	-469.0	-21.1	8.88	8.00	-4.96
5,823.0	58.35	178.64	5,670.3	-17.7	-467.8	17.7	11.29	11.17	1.96
5,872.0	62.41	178.82	5,694.5	-60.3	-466.9	60.3	8.29	8.29	0.37
5,919.0	67.36	177.08	5,714.4	-102.8	-465.3	102.8	11.05	10.53	-3.70
5,967.0	71.85	176.63	5,731.2	-147.7	-462.9	147.7	9.40	9.35	-0.94
6,014.0	76.73	176.37	5,743.9	-192.9	-460.1	192.9	10.40	10.38	-0.55
6,062.0	80.00	177.71	5,753.6	-239.8	-457.7	239.8	7.34	6.81	2.79
6,121.0	85.15	179.87	5,761.2	-298.3	-456.4	298.3	9.45	8.72	3.66
100' Entry									
6,157.0	88.29	181.17	5,763.3	-334.2	-456.8	334.2	9.45	8.73	3.61
6,253.0	93.33	182.45	5,761.9	-430.1	-459.8	430.1	5.42	5.25	1.33
6,348.0	92.63	183.00	5,757.0	-524.9	-464.3	524.9	0.94	-0.74	0.58
6,444.0	93.58	182.92	5,751.8	-620.6	-469.3	620.6	0.99	0.99	-0.08
6,538.0	91.26	183.62	5,747.8	-714.4	-474.6	714.4	2.58	-2.47	0.74
6,634.0	87.22	182.06	5,749.1	-810.2	-479.4	810.2	4.51	-4.21	-1.63
6,730.0	87.32	181.01	5,753.6	-906.1	-481.9	906.1	1.10	0.10	-1.09
6,824.0	88.69	179.79	5,756.9	-1,000.0	-482.6	1,000.0	1.95	1.46	-1.30
6,919.0	89.45	179.00	5,758.5	-1,095.0	-481.6	1,095.0	1.15	0.80	-0.83
7,014.0	88.69	180.00	5,760.0	-1,190.0	-480.8	1,190.0	1.32	-0.80	1.05
7,109.0	88.56	180.16	5,762.3	-1,285.0	-480.9	1,285.0	0.22	-0.14	0.17
7,204.0	91.73	179.69	5,762.0	-1,380.0	-480.8	1,380.0	3.37	3.34	-0.49
7,299.0	90.00	179.88	5,760.6	-1,474.9	-480.4	1,474.9	1.83	-1.82	0.20
7,394.0	89.66	179.93	5,760.9	-1,569.9	-480.3	1,569.9	0.36	-0.36	0.05
7,490.0	89.07	179.87	5,761.9	-1,665.9	-480.1	1,665.9	0.62	-0.61	-0.06
7,584.0	89.21	180.74	5,763.4	-1,759.9	-480.6	1,759.9	0.94	0.15	0.93
7,679.0	90.97	180.30	5,763.2	-1,854.9	-481.5	1,854.9	1.91	1.85	-0.46
7,775.0	90.69	179.51	5,761.8	-1,950.9	-481.3	1,950.9	0.87	-0.29	-0.82
7,870.0	90.47	178.65	5,760.9	-2,045.9	-479.8	2,045.9	0.93	-0.23	-0.91
7,964.0	90.34	178.04	5,760.2	-2,139.8	-477.1	2,139.8	0.66	-0.14	-0.65
8,058.0	90.99	178.51	5,759.1	-2,233.8	-474.2	2,233.8	0.85	0.69	0.50
8,153.0	91.40	177.12	5,757.1	-2,328.7	-470.6	2,328.7	1.53	0.43	-1.46
8,248.0	91.24	178.92	5,754.9	-2,423.6	-467.3	2,423.6	1.90	-0.17	1.89

Precision Drilling Corporation

Survey Report

Company:	WHITING PETROLEUM CORP.	Local Co-ordinate Reference:	Well Horsetail #07E-1801
Project:	Weld County, CO	TVD Reference:	4925.6'GL+21'KB @ 4946.6usft (Unit 409)
Site:	Sec 7-T10N-R57W	MD Reference:	4925.6'GL+21'KB @ 4946.6usft (Unit 409)
Well:	Horsetail #07E-1801	North Reference:	True
Wellbore:	Original Hole	Survey Calculation Method:	Minimum Curvature
Design:	Original Hole	Database:	Compass_US

Survey

Measured Depth (usft)	Inclination (°)	Azimuth (°)	Vertical Depth (usft)	+N/-S (usft)	+E/-W (usft)	Vertical Section (usft)	Dogleg Rate (°/100usft)	Build Rate (°/100usft)	Turn Rate (°/100usft)
8,343.0	91.54	177.80	5,752.6	-2,518.5	-464.6	2,518.5	1.22	0.32	-1.18
8,439.0	90.45	178.49	5,751.0	-2,614.5	-461.5	2,614.5	1.34	-1.14	0.72
8,535.0	89.98	180.39	5,750.6	-2,710.5	-460.6	2,710.5	2.04	-0.49	1.98
8,628.0	89.73	180.39	5,750.8	-2,803.5	-461.2	2,803.5	0.27	-0.27	0.00
8,724.0	89.69	181.95	5,751.3	-2,899.4	-463.2	2,899.4	1.63	-0.04	1.63
8,819.0	89.62	181.72	5,751.9	-2,994.4	-466.2	2,994.4	0.25	-0.07	-0.24
8,911.0	90.18	181.83	5,752.1	-3,086.3	-469.1	3,086.3	0.62	0.61	0.12
9,002.0	90.68	181.38	5,751.4	-3,177.3	-471.6	3,177.3	0.74	0.55	-0.49
9,094.0	90.79	181.00	5,750.2	-3,269.3	-473.5	3,269.3	0.43	0.12	-0.41
9,185.0	91.40	180.90	5,748.5	-3,360.3	-475.0	3,360.3	0.68	0.67	-0.11
9,277.0	92.21	180.82	5,745.6	-3,452.2	-476.4	3,452.2	0.88	0.88	-0.09
9,368.0	90.73	180.52	5,743.2	-3,543.2	-477.5	3,543.2	1.66	-1.63	-0.33
9,461.0	89.31	179.54	5,743.2	-3,636.2	-477.5	3,636.2	1.86	-1.53	-1.05
9,551.0	89.66	179.37	5,744.0	-3,726.1	-476.7	3,726.1	0.43	0.39	-0.19
9,643.0	89.06	178.17	5,745.0	-3,818.1	-474.7	3,818.1	1.46	-0.65	-1.30
9,734.0	89.19	178.00	5,746.4	-3,909.1	-471.6	3,909.1	0.24	0.14	-0.19
9,826.0	89.17	177.13	5,747.7	-4,001.0	-467.7	4,001.0	0.95	-0.02	-0.95
9,917.0	87.58	175.88	5,750.3	-4,091.8	-462.2	4,091.8	2.22	-1.75	-1.37
10,010.0	87.25	178.16	5,754.5	-4,184.5	-457.4	4,184.5	2.47	-0.35	2.45
10,102.0	89.08	179.23	5,757.4	-4,276.4	-455.3	4,276.4	2.30	1.99	1.16
10,194.0	89.35	180.86	5,758.7	-4,368.4	-455.3	4,368.4	1.80	0.29	1.77
10,286.0	89.72	180.79	5,759.5	-4,460.4	-456.7	4,460.4	0.41	0.40	-0.08
10,378.0	89.59	180.01	5,760.0	-4,552.4	-457.3	4,552.4	0.86	-0.14	-0.85
10,469.0	89.52	181.14	5,760.7	-4,643.4	-458.2	4,643.4	1.24	-0.08	1.24
10,560.0	89.87	181.53	5,761.2	-4,734.4	-460.3	4,734.4	0.58	0.38	0.43
10,652.0	89.61	180.04	5,761.6	-4,826.4	-461.6	4,826.4	1.64	-0.28	-1.62
10,744.0	88.91	179.72	5,762.8	-4,918.4	-461.4	4,918.4	0.84	-0.76	-0.35
10,834.0	89.16	180.64	5,764.3	-5,008.3	-461.7	5,008.3	1.06	0.28	1.02
10,926.0	88.90	179.91	5,765.9	-5,100.3	-462.1	5,100.3	0.84	-0.28	-0.79
11,017.0	90.02	181.27	5,766.7	-5,191.3	-463.1	5,191.3	1.94	1.23	1.49
11,108.0	90.46	180.81	5,766.4	-5,282.3	-464.7	5,282.3	0.70	0.48	-0.51
11,200.0	91.06	181.33	5,765.1	-5,374.3	-466.4	5,374.3	0.86	0.65	0.57
11,292.0	91.05	180.84	5,763.4	-5,466.2	-468.2	5,466.2	0.53	-0.01	-0.53
11,384.0	90.30	179.80	5,762.4	-5,558.2	-468.7	5,558.2	1.39	-0.82	-1.13
11,476.0	89.24	179.26	5,762.7	-5,650.2	-467.9	5,650.2	1.29	-1.15	-0.59
11,567.0	89.13	181.42	5,764.0	-5,741.2	-468.5	5,741.2	2.38	-0.12	2.37
11,659.0	90.31	182.81	5,764.5	-5,833.1	-471.9	5,833.1	1.98	1.28	1.51
11,751.0	91.02	182.69	5,763.4	-5,925.0	-476.3	5,925.0	0.78	0.77	-0.13
11,842.0	92.27	182.23	5,760.8	-6,015.9	-480.2	6,015.9	1.46	1.37	-0.51
11,934.0	90.43	183.61	5,758.6	-6,107.8	-484.9	6,107.8	2.50	-2.00	1.50
12,026.0	91.05	183.93	5,757.4	-6,199.6	-490.9	6,199.6	0.76	0.67	0.35
12,118.0	89.28	181.67	5,757.2	-6,291.4	-495.4	6,291.4	3.12	-1.92	-2.46
12,209.0	89.69	180.34	5,758.0	-6,382.4	-497.0	6,382.4	1.53	0.45	-1.46
12,301.0	90.04	179.68	5,758.2	-6,474.4	-497.0	6,474.4	0.81	0.38	-0.72

Precision Drilling Corporation

Survey Report

Company:	WHITING PETROLEUM CORP.	Local Co-ordinate Reference:	Well Horsetail #07E-1801
Project:	Weld County, CO	TVD Reference:	4925.6'GL+21'KB @ 4946.6usft (Unit 409)
Site:	Sec 7-T10N-R57W	MD Reference:	4925.6'GL+21'KB @ 4946.6usft (Unit 409)
Well:	Horsetail #07E-1801	North Reference:	True
Wellbore:	Original Hole	Survey Calculation Method:	Minimum Curvature
Design:	Original Hole	Database:	Compass_US

Survey										
Measured Depth (usft)	Inclination (°)	Azimuth (°)	Vertical Depth (usft)	+N/-S (usft)	+E/-W (usft)	Vertical Section (usft)	Dogleg Rate (°/100usft)	Build Rate (°/100usft)	Turn Rate (°/100usft)	
12,392.0	91.42	180.39	5,757.0	-6,565.4	-497.1	6,565.4	1.71	1.52	0.78	
12,483.0	90.33	179.61	5,755.7	-6,656.4	-497.1	6,656.4	1.47	-1.20	-0.86	
12,575.0	89.77	178.95	5,755.6	-6,748.4	-495.9	6,748.4	0.94	-0.61	-0.72	
12,667.0	89.97	178.14	5,755.8	-6,840.4	-493.6	6,840.4	0.91	0.22	-0.88	
12,759.0	90.68	177.98	5,755.3	-6,932.3	-490.5	6,932.3	0.79	0.77	-0.17	
12,850.0	89.90	178.35	5,754.8	-7,023.2	-487.6	7,023.2	0.95	-0.86	0.41	
12,941.0	90.02	177.56	5,754.9	-7,114.2	-484.3	7,114.2	0.88	0.13	-0.87	
13,033.0	89.85	179.39	5,755.0	-7,206.2	-481.9	7,206.2	2.00	-0.18	1.99	
13,124.0	91.20	180.11	5,754.1	-7,297.1	-481.5	7,297.1	1.68	1.48	0.79	
13,215.0	92.29	179.85	5,751.4	-7,388.1	-481.4	7,388.1	1.23	1.20	-0.29	
13,307.0	91.04	179.05	5,748.7	-7,480.1	-480.6	7,480.1	1.61	-1.36	-0.87	
13,398.0	90.73	181.26	5,747.3	-7,571.0	-480.8	7,571.0	2.45	-0.34	2.43	
13,490.0	89.62	181.72	5,747.0	-7,663.0	-483.2	7,663.0	1.31	-1.21	0.50	
13,580.0	90.11	180.48	5,747.2	-7,753.0	-484.9	7,753.0	1.48	0.54	-1.38	
13,671.0	91.44	179.97	5,746.0	-7,844.0	-485.3	7,844.0	1.57	1.46	-0.56	
13,764.0	92.90	179.51	5,742.5	-7,936.9	-484.9	7,936.9	1.65	1.57	-0.49	
13,856.0	93.33	178.80	5,737.5	-8,028.8	-483.5	8,028.8	0.90	0.47	-0.77	
13,874.0	93.33	178.80	5,736.4	-8,046.7	-483.1	8,046.7	0.00	0.00	0.00	
100' Exit										
13,938.0	93.33	178.80	5,732.7	-8,110.6	-481.8	8,110.6	0.00	0.00	0.00	
BHL #1801										

Design Targets										
Target Name	Dip Angle (°)	Dip Dir. (°)	TVD (usft)	+N/-S (usft)	+E/-W (usft)	Northing (usft)	Easting (usft)	Latitude	Longitude	
SL #1801	0.00	0.00	0.0	0.0	0.0	1,558,448.66	3,469,890.11	40.853964°N	103.801367°W	
- hit/miss target										
- Shape										
- actual wellpath hits target center										
- Point										
BHL #1801	0.00	0.00	5,732.7	-8,110.6	-481.8	1,550,330.32	3,469,563.76	40.831703°N	103.803108°W	
- actual wellpath hits target center										
- Point										

Design Annotations					
Measured Depth (usft)	Vertical Depth (usft)	+N/-S (usft)	+E/-W (usft)	Comment	
6,121.0	5,761.2	-298.3	-456.4	100' Entry	
13,874.0	5,736.4	-8,046.7	-483.1	100' Exit	