

# **BILL BARRETT CORP**

**WELD COUNTY, COLORADO  
Will Trust 6-62-3\_2 NWSW Pad  
Will Trust 6-62-3-4841B2**

**Wellbore #1**

**Plan: Design #1**

## **Standard Planning Report**

**07 March, 2016**

# Bill Barrett Corp

## Planning Report

<b>Database:</b>	Compass	<b>Local Co-ordinate Reference:</b>	Well Will Trust 6-62-3-4841B2
<b>Company:</b>	BILL BARRETT CORP	<b>TVD Reference:</b>	KB @ 4833.0ft (Original Well Elev)
<b>Project:</b>	WELD COUNTY, COLORADO	<b>MD Reference:</b>	KB @ 4833.0ft (Original Well Elev)
<b>Site:</b>	Will Trust 6-62-3_2 NWSW Pad	<b>North Reference:</b>	True
<b>Well:</b>	Will Trust 6-62-3-4841B2	<b>Survey Calculation Method:</b>	Minimum Curvature
<b>Wellbore:</b>	Wellbore #1		
<b>Design:</b>	Design #1		

<b>Project</b>	WELD COUNTY, COLORADO		
<b>Map System:</b>	US State Plane 1983	<b>System Datum:</b>	Mean Sea Level
<b>Geo Datum:</b>	North American Datum 1983		
<b>Map Zone:</b>	Colorado Northern Zone		

Site		Will Trust 6-62-3_2 NWSW Pad			
Site Position:		Northing:	1,432,565.25 ft	Latitude:	40° 30' 53.168 N
From:	Lat/Long	Easting:	3,328,933.28 ft	Longitude:	104° 19' 0.901 W
Position Uncertainty:	0.0 ft	Slot Radius:	"	Grid Convergence:	0.76 °

Well		Will Trust 6-62-3-4841B2				
Well Position	+N-S	-59.4 ft	Northing:	1,432,505.88 ft	Latitude:	40° 30' 52.581 N
	+E-W	0.8 ft	Easting:	3,328,934.91 ft	Longitude:	104° 19' 0.890 W
Position Uncertainty		0.0 ft	Wellhead Elevation:	ft	Ground Level:	4,817.0ft

<b>Wellbore</b>	Wellbore #1				
<b>Magnetics</b>	<b>Model Name</b>	<b>Sample Date</b>	<b>Declination (°)</b>	<b>Dip Angle (°)</b>	<b>Field Strength (nT)</b>
	IGRF2010	12/31/2014	8.15	67.09	52,863

<b>Design</b>	Design #1				
<b>Audit Notes:</b>					
<b>Version:</b>	<b>Phase:</b>	PLAN	<b>Tie On Depth:</b>	0.0	
<b>Vertical Section:</b>	<b>Depth From (TVD) (ft)</b>	<b>+N/-S (ft)</b>	<b>+E/-W (ft)</b>	<b>Direction (°)</b>	
	0.0	0.0	0.0	93.72	

<b>Plan Sections</b>										
Measured Depth (ft)	Inclination (°)	Azimuth (°)	Vertical Depth (ft)	+N/-S (ft)	+E/-W (ft)	Dogleg Rate (°/100ft)	Build Rate (°/100ft)	Turn Rate (°/100ft)	TFO (°)	Target
0.0	0.00	0.00	0.0	0.0	0.0	0.00	0.00	0.00	0.00	
1,000.0	0.00	0.00	1,000.0	0.0	0.0	0.00	0.00	0.00	0.00	
1,420.0	8.40	205.32	1,418.5	-27.8	-13.1	2.00	2.00	0.00	205.32	
5,427.5	8.40	205.32	5,383.0	-557.0	-263.5	0.00	0.00	0.00	0.00	
5,847.5	0.00	90.30	5,801.5	-584.7	-276.7	2.00	-2.00	0.00	180.00	
6,097.5	0.00	90.30	6,051.5	-584.7	-276.7	0.00	0.00	0.00	90.30	
6,850.0	90.30	90.30	6,529.0	-587.3	203.3	12.00	12.00	0.00	90.30	WT 6-62-3-4841B2
16,453.8	90.30	90.30	6,479.0	-637.8	9,806.7	0.00	0.00	0.00	0.00	WT 6-62-3-4841B2

# Bill Barrett Corp

## Planning Report

<b>Database:</b>	Compass	<b>Local Co-ordinate Reference:</b>	Well Will Trust 6-62-3-4841B2
<b>Company:</b>	BILL BARRETT CORP	<b>TVD Reference:</b>	KB @ 4833.0ft (Original Well Elev)
<b>Project:</b>	WELD COUNTY, COLORADO	<b>MD Reference:</b>	KB @ 4833.0ft (Original Well Elev)
<b>Site:</b>	Will Trust 6-62-3_2 NWSW Pad	<b>North Reference:</b>	True
<b>Well:</b>	Will Trust 6-62-3-4841B2	<b>Survey Calculation Method:</b>	Minimum Curvature
<b>Wellbore:</b>	Wellbore #1		
<b>Design:</b>	Design #1		

Planned Survey									
Measured Depth (ft)	Inclination (°)	Azimuth (°)	Vertical Depth (ft)	+N/-S (ft)	+E/-W (ft)	Vertical Section (ft)	Dogleg Rate (°/100ft)	Build Rate (°/100ft)	Turn Rate (°/100ft)
0.0	0.00	0.00	0.0	0.0	0.0	0.0	0.00	0.00	0.00
100.0	0.00	0.00	100.0	0.0	0.0	0.0	0.00	0.00	0.00
200.0	0.00	0.00	200.0	0.0	0.0	0.0	0.00	0.00	0.00
300.0	0.00	0.00	300.0	0.0	0.0	0.0	0.00	0.00	0.00
400.0	0.00	0.00	400.0	0.0	0.0	0.0	0.00	0.00	0.00
500.0	0.00	0.00	500.0	0.0	0.0	0.0	0.00	0.00	0.00
600.0	0.00	0.00	600.0	0.0	0.0	0.0	0.00	0.00	0.00
700.0	0.00	0.00	700.0	0.0	0.0	0.0	0.00	0.00	0.00
800.0	0.00	0.00	800.0	0.0	0.0	0.0	0.00	0.00	0.00
900.0	0.00	0.00	900.0	0.0	0.0	0.0	0.00	0.00	0.00
1,000.0	0.00	0.00	1,000.0	0.0	0.0	0.0	0.00	0.00	0.00
1,100.0	2.00	205.32	1,100.0	-1.6	-0.7	-0.6	2.00	2.00	0.00
1,200.0	4.00	205.32	1,199.8	-6.3	-3.0	-2.6	2.00	2.00	0.00
1,300.0	6.00	205.32	1,299.5	-14.2	-6.7	-5.8	2.00	2.00	0.00
1,400.0	8.00	205.32	1,398.7	-25.2	-11.9	-10.3	2.00	2.00	0.00
1,420.0	8.40	205.32	1,418.5	-27.8	-13.1	-11.3	2.00	2.00	0.00
1,500.0	8.40	205.32	1,497.6	-38.3	-18.1	-15.6	0.00	0.00	0.00
1,600.0	8.40	205.32	1,596.6	-51.5	-24.4	-21.0	0.00	0.00	0.00
1,700.0	8.40	205.32	1,695.5	-64.8	-30.6	-26.4	0.00	0.00	0.00
1,800.0	8.40	205.32	1,794.4	-78.0	-36.9	-31.8	0.00	0.00	0.00
1,900.0	8.40	205.32	1,893.3	-91.2	-43.1	-37.1	0.00	0.00	0.00
2,000.0	8.40	205.32	1,992.3	-104.4	-49.4	-42.5	0.00	0.00	0.00
2,100.0	8.40	205.32	2,091.2	-117.6	-55.6	-47.9	0.00	0.00	0.00
2,200.0	8.40	205.32	2,190.1	-130.8	-61.9	-53.3	0.00	0.00	0.00
2,300.0	8.40	205.32	2,289.1	-144.0	-68.1	-58.6	0.00	0.00	0.00
2,400.0	8.40	205.32	2,388.0	-157.2	-74.4	-64.0	0.00	0.00	0.00
2,500.0	8.40	205.32	2,486.9	-170.4	-80.6	-69.4	0.00	0.00	0.00
2,600.0	8.40	205.32	2,585.8	-183.6	-86.9	-74.8	0.00	0.00	0.00
2,700.0	8.40	205.32	2,684.8	-196.8	-93.1	-80.2	0.00	0.00	0.00
2,800.0	8.40	205.32	2,783.7	-210.0	-99.4	-85.5	0.00	0.00	0.00
2,900.0	8.40	205.32	2,882.6	-223.2	-105.6	-90.9	0.00	0.00	0.00
3,000.0	8.40	205.32	2,981.5	-236.4	-111.9	-96.3	0.00	0.00	0.00
3,100.0	8.40	205.32	3,080.5	-249.6	-118.1	-101.7	0.00	0.00	0.00
3,200.0	8.40	205.32	3,179.4	-262.8	-124.4	-107.0	0.00	0.00	0.00
3,300.0	8.40	205.32	3,278.3	-276.0	-130.6	-112.4	0.00	0.00	0.00
3,400.0	8.40	205.32	3,377.3	-289.2	-136.9	-117.8	0.00	0.00	0.00
3,500.0	8.40	205.32	3,476.2	-302.4	-143.1	-123.2	0.00	0.00	0.00
3,600.0	8.40	205.32	3,575.1	-315.6	-149.4	-128.6	0.00	0.00	0.00
3,700.0	8.40	205.32	3,674.0	-328.8	-155.6	-133.9	0.00	0.00	0.00
3,800.0	8.40	205.32	3,773.0	-342.0	-161.9	-139.3	0.00	0.00	0.00
3,900.0	8.40	205.32	3,871.9	-355.2	-168.1	-144.7	0.00	0.00	0.00
4,000.0	8.40	205.32	3,970.8	-368.5	-174.4	-150.1	0.00	0.00	0.00
4,100.0	8.40	205.32	4,069.7	-381.7	-180.6	-155.5	0.00	0.00	0.00
4,200.0	8.40	205.32	4,168.7	-394.9	-186.8	-160.8	0.00	0.00	0.00
4,300.0	8.40	205.32	4,267.6	-408.1	-193.1	-166.2	0.00	0.00	0.00
4,400.0	8.40	205.32	4,366.5	-421.3	-199.3	-171.6	0.00	0.00	0.00
4,500.0	8.40	205.32	4,465.5	-434.5	-205.6	-177.0	0.00	0.00	0.00
4,600.0	8.40	205.32	4,564.4	-447.7	-211.8	-182.3	0.00	0.00	0.00
4,700.0	8.40	205.32	4,663.3	-460.9	-218.1	-187.7	0.00	0.00	0.00
4,800.0	8.40	205.32	4,762.2	-474.1	-224.3	-193.1	0.00	0.00	0.00
4,900.0	8.40	205.32	4,861.2	-487.3	-230.6	-198.5	0.00	0.00	0.00
5,000.0	8.40	205.32	4,960.1	-500.5	-236.8	-203.9	0.00	0.00	0.00
5,100.0	8.40	205.32	5,059.0	-513.7	-243.1	-209.2	0.00	0.00	0.00
5,200.0	8.40	205.32	5,157.9	-526.9	-249.3	-214.6	0.00	0.00	0.00

# Bill Barrett Corp

## Planning Report

<b>Database:</b>	Compass	<b>Local Co-ordinate Reference:</b>	Well Will Trust 6-62-3-4841B2
<b>Company:</b>	BILL BARRETT CORP	<b>TVD Reference:</b>	KB @ 4833.0ft (Original Well Elev)
<b>Project:</b>	WELD COUNTY, COLORADO	<b>MD Reference:</b>	KB @ 4833.0ft (Original Well Elev)
<b>Site:</b>	Will Trust 6-62-3_2 NWSW Pad	<b>North Reference:</b>	True
<b>Well:</b>	Will Trust 6-62-3-4841B2	<b>Survey Calculation Method:</b>	Minimum Curvature
<b>Wellbore:</b>	Wellbore #1		
<b>Design:</b>	Design #1		

Planned Survey									
Measured Depth (ft)	Inclination (°)	Azimuth (°)	Vertical Depth (ft)	+N/-S (ft)	+E/-W (ft)	Vertical Section (ft)	Dogleg Rate (°/100ft)	Build Rate (°/100ft)	Turn Rate (°/100ft)
5,300.0	8.40	205.32	5,256.9	-540.1	-255.6	-220.0	0.00	0.00	0.00
5,400.0	8.40	205.32	5,355.8	-553.3	-261.8	-225.4	0.00	0.00	0.00
5,427.5	8.40	205.32	5,383.0	-557.0	-263.5	-226.8	0.00	0.00	0.00
5,500.0	6.95	205.32	5,454.9	-565.7	-267.7	-230.4	2.00	-2.00	0.00
5,600.0	4.95	205.32	5,554.3	-575.1	-272.1	-234.2	2.00	-2.00	0.00
5,700.0	2.95	205.32	5,654.1	-581.3	-275.1	-236.8	2.00	-2.00	0.00
5,800.0	0.95	205.32	5,754.0	-584.4	-276.5	-238.0	2.00	-2.00	0.00
5,847.5	0.00	90.30	5,801.5	-584.7	-276.7	-238.2	2.00	-2.00	0.00
5,900.0	0.00	90.30	5,854.0	-584.7	-276.7	-238.2	0.00	0.00	0.00
6,000.0	0.00	90.30	5,954.0	-584.7	-276.7	-238.2	0.00	0.00	0.00
6,097.5	0.00	90.30	6,051.5	-584.7	-276.7	-238.2	0.00	0.00	0.00
6,100.0	0.30	90.30	6,054.0	-584.7	-276.7	-238.2	12.00	12.00	0.00
6,200.0	12.30	90.30	6,153.2	-584.8	-265.7	-227.2	12.00	12.00	0.00
6,300.0	24.30	90.30	6,248.0	-585.0	-234.4	-196.0	12.00	12.00	0.00
6,400.0	36.30	90.30	6,334.2	-585.2	-184.1	-145.7	12.00	12.00	0.00
6,500.0	48.30	90.30	6,408.0	-585.6	-116.9	-78.6	12.00	12.00	0.00
6,600.0	60.30	90.30	6,466.3	-586.0	-35.8	2.3	12.00	12.00	0.00
6,700.0	72.30	90.30	6,506.4	-586.5	55.6	93.5	12.00	12.00	0.00
6,800.0	84.30	90.30	6,526.6	-587.0	153.3	191.1	12.00	12.00	0.00
6,850.0	90.30	90.30	6,529.0	-587.3	203.3	240.9	12.00	12.00	0.00
WT 6-62-3-4841B2 LP									
6,900.0	90.30	90.30	6,528.7	-587.5	253.2	290.8	0.00	0.00	0.00
7,000.0	90.30	90.30	6,528.2	-588.0	353.2	390.6	0.00	0.00	0.00
7,100.0	90.30	90.30	6,527.7	-588.6	453.2	490.5	0.00	0.00	0.00
7,200.0	90.30	90.30	6,527.2	-589.1	553.2	590.3	0.00	0.00	0.00
7,300.0	90.30	90.30	6,526.7	-589.6	653.2	690.1	0.00	0.00	0.00
7,400.0	90.30	90.30	6,526.1	-590.1	753.2	789.9	0.00	0.00	0.00
7,500.0	90.30	90.30	6,525.6	-590.7	853.2	889.7	0.00	0.00	0.00
7,600.0	90.30	90.30	6,525.1	-591.2	953.2	989.6	0.00	0.00	0.00
7,700.0	90.30	90.30	6,524.6	-591.7	1,053.2	1,089.4	0.00	0.00	0.00
7,800.0	90.30	90.30	6,524.1	-592.3	1,153.2	1,189.2	0.00	0.00	0.00
7,900.0	90.30	90.30	6,523.5	-592.8	1,253.2	1,289.0	0.00	0.00	0.00
8,000.0	90.30	90.30	6,523.0	-593.3	1,353.2	1,388.8	0.00	0.00	0.00
8,100.0	90.30	90.30	6,522.5	-593.8	1,453.2	1,488.7	0.00	0.00	0.00
8,200.0	90.30	90.30	6,522.0	-594.4	1,553.2	1,588.5	0.00	0.00	0.00
8,300.0	90.30	90.30	6,521.5	-594.9	1,653.2	1,688.3	0.00	0.00	0.00
8,400.0	90.30	90.30	6,520.9	-595.4	1,753.2	1,788.1	0.00	0.00	0.00
8,500.0	90.30	90.30	6,520.4	-595.9	1,853.2	1,887.9	0.00	0.00	0.00
8,600.0	90.30	90.30	6,519.9	-596.5	1,953.2	1,987.8	0.00	0.00	0.00
8,700.0	90.30	90.30	6,519.4	-597.0	2,053.2	2,087.6	0.00	0.00	0.00
8,800.0	90.30	90.30	6,518.8	-597.5	2,153.2	2,187.4	0.00	0.00	0.00
8,900.0	90.30	90.30	6,518.3	-598.0	2,253.2	2,287.2	0.00	0.00	0.00
9,000.0	90.30	90.30	6,517.8	-598.6	2,353.2	2,387.1	0.00	0.00	0.00
9,100.0	90.30	90.30	6,517.3	-599.1	2,453.2	2,486.9	0.00	0.00	0.00
9,200.0	90.30	90.30	6,516.8	-599.6	2,553.2	2,586.7	0.00	0.00	0.00
9,300.0	90.30	90.30	6,516.2	-600.1	2,653.2	2,686.5	0.00	0.00	0.00
9,400.0	90.30	90.30	6,515.7	-600.7	2,753.2	2,786.3	0.00	0.00	0.00
9,500.0	90.30	90.30	6,515.2	-601.2	2,853.2	2,886.2	0.00	0.00	0.00
9,600.0	90.30	90.30	6,514.7	-601.7	2,953.2	2,986.0	0.00	0.00	0.00
9,700.0	90.30	90.30	6,514.2	-602.2	3,053.1	3,085.8	0.00	0.00	0.00
9,800.0	90.30	90.30	6,513.6	-602.8	3,153.1	3,185.6	0.00	0.00	0.00
9,900.0	90.30	90.30	6,513.1	-603.3	3,253.1	3,285.4	0.00	0.00	0.00
10,000.0	90.30	90.30	6,512.6	-603.8	3,353.1	3,385.3	0.00	0.00	0.00

# Bill Barrett Corp

## Planning Report

<b>Database:</b>	Compass	<b>Local Co-ordinate Reference:</b>	Well Will Trust 6-62-3-4841B2
<b>Company:</b>	BILL BARRETT CORP	<b>TVD Reference:</b>	KB @ 4833.0ft (Original Well Elev)
<b>Project:</b>	WELD COUNTY, COLORADO	<b>MD Reference:</b>	KB @ 4833.0ft (Original Well Elev)
<b>Site:</b>	Will Trust 6-62-3_2 NWSW Pad	<b>North Reference:</b>	True
<b>Well:</b>	Will Trust 6-62-3-4841B2	<b>Survey Calculation Method:</b>	Minimum Curvature
<b>Wellbore:</b>	Wellbore #1		
<b>Design:</b>	Design #1		

Planned Survey									
Measured Depth (ft)	Inclination (°)	Azimuth (°)	Vertical Depth (ft)	+N/-S (ft)	+E/-W (ft)	Vertical Section (ft)	Dogleg Rate (°/100ft)	Build Rate (°/100ft)	Turn Rate (°/100ft)
10,100.0	90.30	90.30	6,512.1	-604.3	3,453.1	3,485.1	0.00	0.00	0.00
10,200.0	90.30	90.30	6,511.6	-604.9	3,553.1	3,584.9	0.00	0.00	0.00
10,300.0	90.30	90.30	6,511.0	-605.4	3,653.1	3,684.7	0.00	0.00	0.00
10,400.0	90.30	90.30	6,510.5	-605.9	3,753.1	3,784.5	0.00	0.00	0.00
10,500.0	90.30	90.30	6,510.0	-606.5	3,853.1	3,884.4	0.00	0.00	0.00
10,600.0	90.30	90.30	6,509.5	-607.0	3,953.1	3,984.2	0.00	0.00	0.00
10,700.0	90.30	90.30	6,509.0	-607.5	4,053.1	4,084.0	0.00	0.00	0.00
10,800.0	90.30	90.30	6,508.4	-608.0	4,153.1	4,183.8	0.00	0.00	0.00
10,900.0	90.30	90.30	6,507.9	-608.6	4,253.1	4,283.6	0.00	0.00	0.00
11,000.0	90.30	90.30	6,507.4	-609.1	4,353.1	4,383.5	0.00	0.00	0.00
11,100.0	90.30	90.30	6,506.9	-609.6	4,453.1	4,483.3	0.00	0.00	0.00
11,200.0	90.30	90.30	6,506.4	-610.1	4,553.1	4,583.1	0.00	0.00	0.00
11,300.0	90.30	90.30	6,505.8	-610.7	4,653.1	4,682.9	0.00	0.00	0.00
11,400.0	90.30	90.30	6,505.3	-611.2	4,753.1	4,782.7	0.00	0.00	0.00
11,500.0	90.30	90.30	6,504.8	-611.7	4,853.1	4,882.6	0.00	0.00	0.00
11,600.0	90.30	90.30	6,504.3	-612.2	4,953.1	4,982.4	0.00	0.00	0.00
11,700.0	90.30	90.30	6,503.7	-612.8	5,053.1	5,082.2	0.00	0.00	0.00
11,800.0	90.30	90.30	6,503.2	-613.3	5,153.1	5,182.0	0.00	0.00	0.00
11,900.0	90.30	90.30	6,502.7	-613.8	5,253.1	5,281.9	0.00	0.00	0.00
12,000.0	90.30	90.30	6,502.2	-614.3	5,353.1	5,381.7	0.00	0.00	0.00
12,100.0	90.30	90.30	6,501.7	-614.9	5,453.1	5,481.5	0.00	0.00	0.00
12,200.0	90.30	90.30	6,501.1	-615.4	5,553.1	5,581.3	0.00	0.00	0.00
12,300.0	90.30	90.30	6,500.6	-615.9	5,653.1	5,681.1	0.00	0.00	0.00
12,400.0	90.30	90.30	6,500.1	-616.4	5,753.1	5,781.0	0.00	0.00	0.00
12,500.0	90.30	90.30	6,499.6	-617.0	5,853.1	5,880.8	0.00	0.00	0.00
12,600.0	90.30	90.30	6,499.1	-617.5	5,953.1	5,980.6	0.00	0.00	0.00
12,700.0	90.30	90.30	6,498.5	-618.0	6,053.1	6,080.4	0.00	0.00	0.00
12,800.0	90.30	90.30	6,498.0	-618.5	6,153.1	6,180.2	0.00	0.00	0.00
12,900.0	90.30	90.30	6,497.5	-619.1	6,253.1	6,280.1	0.00	0.00	0.00
13,000.0	90.30	90.30	6,497.0	-619.6	6,353.1	6,379.9	0.00	0.00	0.00
13,100.0	90.30	90.30	6,496.5	-620.1	6,453.1	6,479.7	0.00	0.00	0.00
13,200.0	90.30	90.30	6,495.9	-620.7	6,553.1	6,579.5	0.00	0.00	0.00
13,300.0	90.30	90.30	6,495.4	-621.2	6,653.1	6,679.3	0.00	0.00	0.00
13,400.0	90.30	90.30	6,494.9	-621.7	6,753.0	6,779.2	0.00	0.00	0.00
13,500.0	90.30	90.30	6,494.4	-622.2	6,853.0	6,879.0	0.00	0.00	0.00
13,600.0	90.30	90.30	6,493.9	-622.8	6,953.0	6,978.8	0.00	0.00	0.00
13,700.0	90.30	90.30	6,493.3	-623.3	7,053.0	7,078.6	0.00	0.00	0.00
13,800.0	90.30	90.30	6,492.8	-623.8	7,153.0	7,178.4	0.00	0.00	0.00
13,900.0	90.30	90.30	6,492.3	-624.3	7,253.0	7,278.3	0.00	0.00	0.00
14,000.0	90.30	90.30	6,491.8	-624.9	7,353.0	7,378.1	0.00	0.00	0.00
14,100.0	90.30	90.30	6,491.3	-625.4	7,453.0	7,477.9	0.00	0.00	0.00
14,200.0	90.30	90.30	6,490.7	-625.9	7,553.0	7,577.7	0.00	0.00	0.00
14,300.0	90.30	90.30	6,490.2	-626.4	7,653.0	7,677.5	0.00	0.00	0.00
14,400.0	90.30	90.30	6,489.7	-627.0	7,753.0	7,777.4	0.00	0.00	0.00
14,500.0	90.30	90.30	6,489.2	-627.5	7,853.0	7,877.2	0.00	0.00	0.00
14,600.0	90.30	90.30	6,488.7	-628.0	7,953.0	7,977.0	0.00	0.00	0.00
14,700.0	90.30	90.30	6,488.1	-628.5	8,053.0	8,076.8	0.00	0.00	0.00
14,800.0	90.30	90.30	6,487.6	-629.1	8,153.0	8,176.6	0.00	0.00	0.00
14,900.0	90.30	90.30	6,487.1	-629.6	8,253.0	8,276.5	0.00	0.00	0.00
15,000.0	90.30	90.30	6,486.6	-630.1	8,353.0	8,376.3	0.00	0.00	0.00
15,100.0	90.30	90.30	6,486.0	-630.6	8,453.0	8,476.1	0.00	0.00	0.00
15,200.0	90.30	90.30	6,485.5	-631.2	8,553.0	8,575.9	0.00	0.00	0.00
15,300.0	90.30	90.30	6,485.0	-631.7	8,653.0	8,675.8	0.00	0.00	0.00
15,400.0	90.30	90.30	6,484.5	-632.2	8,753.0	8,775.6	0.00	0.00	0.00

# Bill Barrett Corp

## Planning Report

<b>Database:</b>	Compass	<b>Local Co-ordinate Reference:</b>	Well Will Trust 6-62-3-4841B2
<b>Company:</b>	BILL BARRETT CORP	<b>TVD Reference:</b>	KB @ 4833.0ft (Original Well Elev)
<b>Project:</b>	WELD COUNTY, COLORADO	<b>MD Reference:</b>	KB @ 4833.0ft (Original Well Elev)
<b>Site:</b>	Will Trust 6-62-3_2 NWSW Pad	<b>North Reference:</b>	True
<b>Well:</b>	Will Trust 6-62-3-4841B2	<b>Survey Calculation Method:</b>	Minimum Curvature
<b>Wellbore:</b>	Wellbore #1		
<b>Design:</b>	Design #1		

Planned Survey										
Measured Depth (ft)	Inclination (°)	Azimuth (°)	Vertical Depth (ft)	+N/-S (ft)	+E/-W (ft)	Vertical Section (ft)	Dogleg Rate (°/100ft)	Build Rate (°/100ft)	Turn Rate (°/100ft)	
15,500.0	90.30	90.30	6,484.0	-632.7	8,853.0	8,875.4	0.00	0.00	0.00	
15,600.0	90.30	90.30	6,483.4	-633.3	8,953.0	8,975.2	0.00	0.00	0.00	
15,700.0	90.30	90.30	6,482.9	-633.8	9,053.0	9,075.0	0.00	0.00	0.00	
15,800.0	90.30	90.30	6,482.4	-634.3	9,153.0	9,174.9	0.00	0.00	0.00	
15,900.0	90.30	90.30	6,481.9	-634.9	9,253.0	9,274.7	0.00	0.00	0.00	
16,000.0	90.30	90.30	6,481.4	-635.4	9,353.0	9,374.5	0.00	0.00	0.00	
16,100.0	90.30	90.30	6,480.8	-635.9	9,453.0	9,474.3	0.00	0.00	0.00	
16,200.0	90.30	90.30	6,480.3	-636.4	9,553.0	9,574.1	0.00	0.00	0.00	
16,300.0	90.30	90.30	6,479.8	-637.0	9,653.0	9,674.0	0.00	0.00	0.00	
16,400.0	90.30	90.30	6,479.3	-637.5	9,753.0	9,773.8	0.00	0.00	0.00	
16,453.8	90.30	90.30	6,479.0	-637.8	9,806.7	9,827.4	0.00	0.00	0.00	
WT 6-62-3-4841B2 PBHL										



**Bill Barrett Corporation**

## COMPANY DETAILS: BILL BARRETT CORP

Calculation Method: Minimum Curvature  
Error System: ISCWSA  
Scan Method: Closest Approach 3D  
Error Surface: Elliptical Conic  
Warning Method: Error Ratio

## REFERENCE INFORMATION

Co-ordinate (N/E) Reference: Well Will Trust 6-62-3-4841B2, True North  
Vertical (TVD) Reference: KB @ 4833.0ft (Original Well Elev)  
Section (VS) Reference: Slot - (0.0N, 0.0E)  
Measured Depth Reference: KB @ 4833.0ft (Original Well Elev)  
Calculation Method: Minimum Curvature

## WELL DETAILS: Will Trust 6-62-3-4841B2

+N/-S	+E/-W	Northing	Easting	Latitude	Longitude
0.0	0.0	1432505.88	3328934.91	40° 30' 52.581 N	104° 19' 0.890 W

## WELLBORE TARGET DETAILS

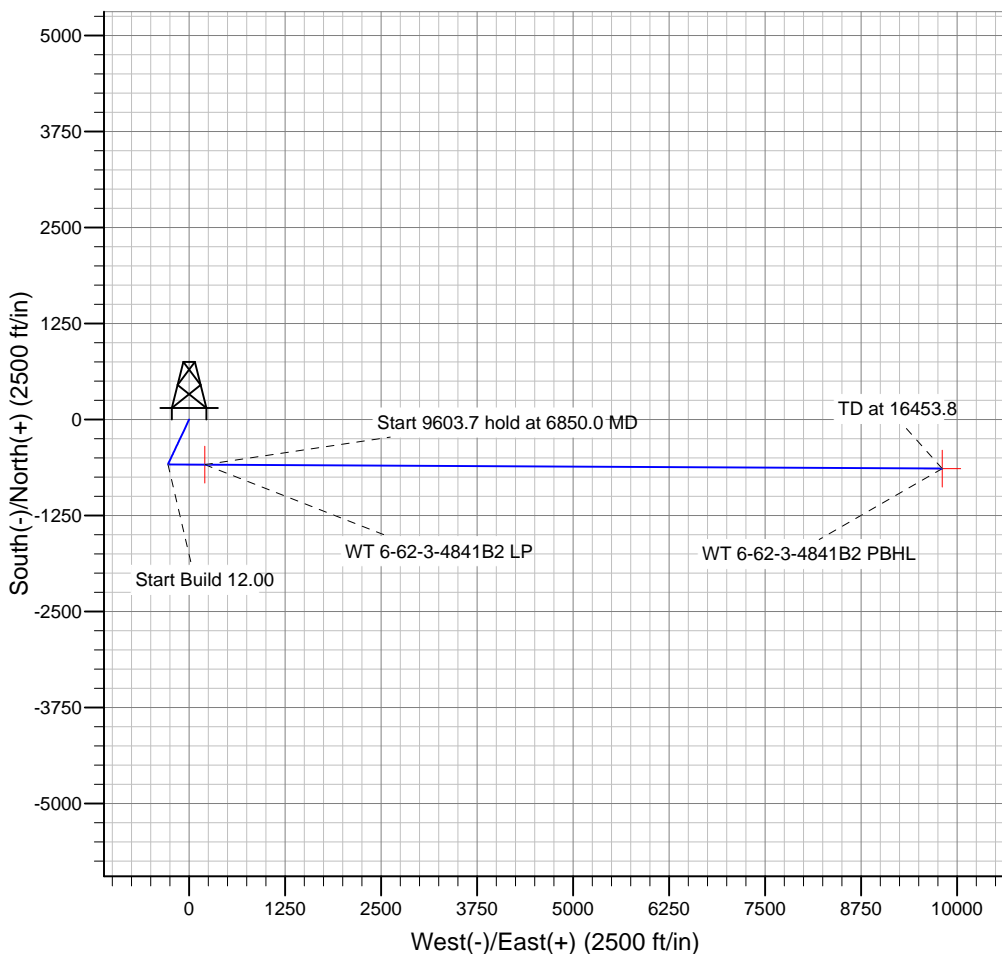
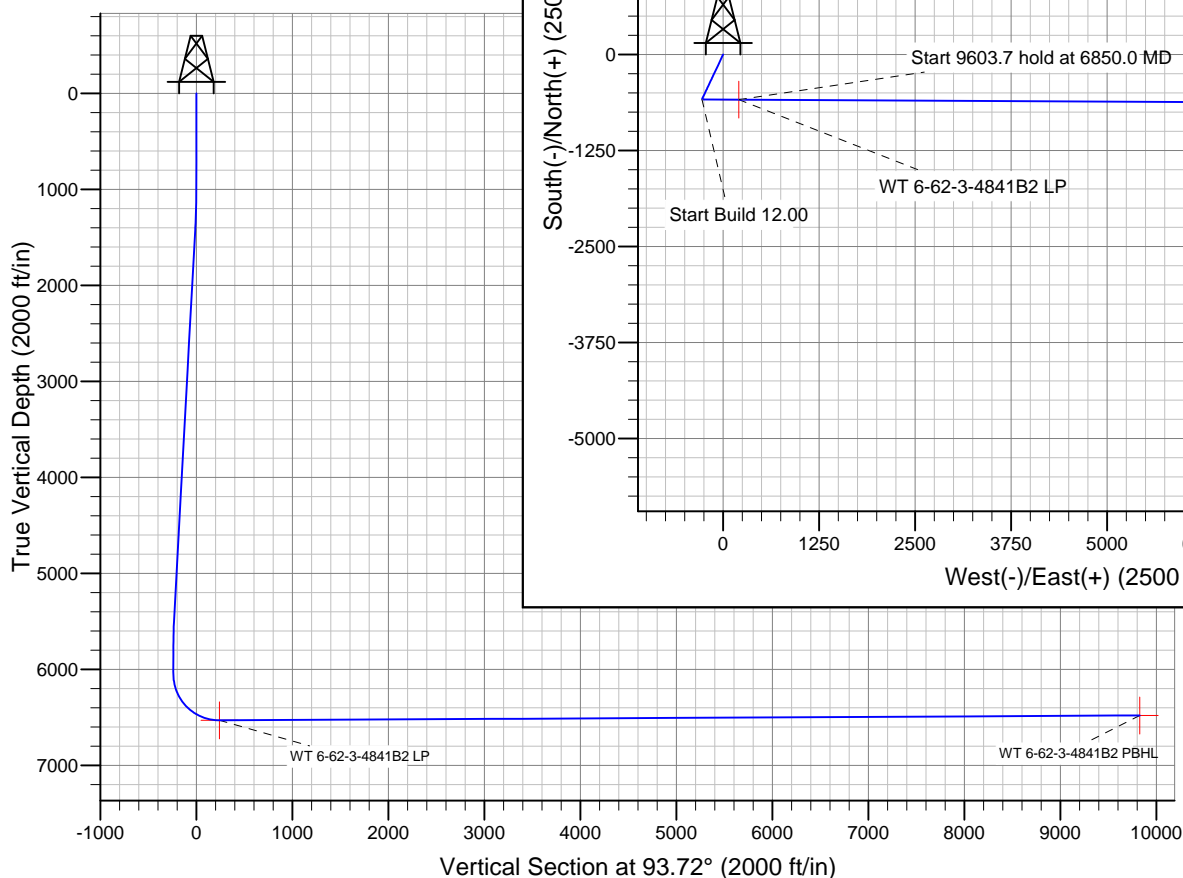
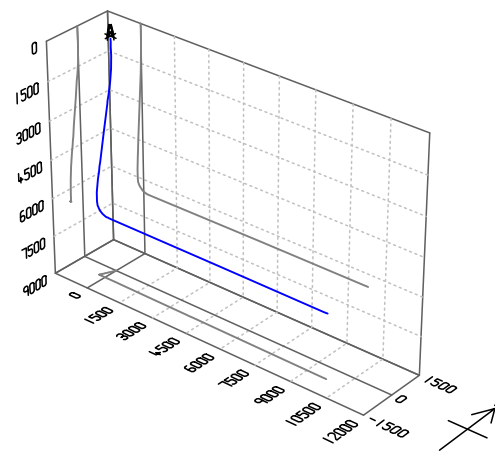
Name	TVD	+N/-S	+E/-W	Shape
WT 6-62-3-4841B2 PBHL	6479.0	-637.8	9806.7	Point
WT 6-62-3-4841B2 LP	6529.0	-587.3	203.3	Point

## PROJECT DETAILS: WELD COUNTY, COLORADO

Geodetic System: US State Plane 1983  
Datum: North American Datum 1983  
Ellipsoid: GRS 1980  
Zone: Colorado Northern Zone

## SECTION DETAILS

Sec	MD	Inc	Azi	TVD	+N/-S	+E/-W	DLeg	TFace	VSec	Target
1	0.0	0.00	0.00	0.0	0.0	0.0	0.00	0.00	0.0	
2	1000.0	0.00	0.00	1000.0	0.0	0.0	0.00	0.00	0.0	
3	1420.0	8.40	205.32	1418.5	-27.8	-13.1	2.00	205.32	-11.3	
4	5427.5	8.40	205.32	5383.0	-557.0	-263.5	0.00	0.00	-226.8	
5	5847.5	0.00	90.30	5801.5	-584.7	-276.7	2.00	180.00	-238.2	
6	6097.5	0.00	90.30	6051.5	-584.7	-276.7	0.00	90.30	-238.2	
7	6850.0	90.30	90.30	6529.0	-587.3	203.3	12.00	90.30	240.9	WT 6-62-3-4841B2 LP
8	16453.8	90.30	90.30	6479.0	-637.8	9806.7	0.00	0.00	9827.4	WT 6-62-3-4841B2 PBHL



Azimuths to True North  
Magnetic North: 8.15°

Magnetic Field  
Strength: 52863.4snT  
Dip Angle: 67.09°  
Date: 12/31/2014  
Model: IGRF2010