

BILL BARRETT CORP

**WELD COUNTY, COLORADO
Will Trust 6-62-3_2 NWSW Pad
Will Trust 6-62-3-3340B2**

Wellbore #1

Plan: Design #1

Standard Planning Report

07 March, 2016

Bill Barrett Corp

Planning Report

Database:	Compass	Local Co-ordinate Reference:	Well Will Trust 6-62-3-3340B2
Company:	BILL BARRETT CORP	TVD Reference:	KB @ 4833.0ft (Original Well Elev)
Project:	WELD COUNTY, COLORADO	MD Reference:	KB @ 4833.0ft (Original Well Elev)
Site:	Will Trust 6-62-3_2 NWSW Pad	North Reference:	True
Well:	Will Trust 6-62-3-3340B2	Survey Calculation Method:	Minimum Curvature
Wellbore:	Wellbore #1		
Design:	Design #1		

Project	WELD COUNTY, COLORADO		
Map System:	US State Plane 1983	System Datum:	Mean Sea Level
Geo Datum:	North American Datum 1983		
Map Zone:	Colorado Northern Zone		

Site		Will Trust 6-62-3_2 NWSW Pad				
Site Position:		Northing:	1,432,565.25 ft	Latitude:	40° 30' 53.168 N	
From:	Lat/Long	Easting:	3,328,933.28 ft	Longitude:	104° 19' 0.901 W	
Position Uncertainty:		0.0 ft	Slot Radius:	"	Grid Convergence:	0.76 °

Well		Will Trust 6-62-3-3340B2				
Well Position	+N-S	-29.2 ft	Northing:	1,432,536.11 ft	Latitude:	40° 30' 52.880 N
	+E-W	0.8 ft	Easting:	3,328,934.50 ft	Longitude:	104° 19' 0.890 W
Position Uncertainty		0.0 ft	Wellhead Elevation:	ft	Ground Level:	4,817.0 ft

Wellbore	Wellbore #1				
Magnetics	Model Name	Sample Date	Declination (°)	Dip Angle (°)	Field Strength (nT)
	IGRF2010	12/31/2014	8.15	67.09	52,863

Design	Design #1				
Audit Notes:					
Version:	Phase:	PLAN	Tie On Depth:	0.0	
Vertical Section:	Depth From (TVD) (ft)	+N/-S (ft)	+E/-W (ft)	Direction (°)	
	0.0	0.0	0.0	90.34	

Plan Sections										
Measured Depth (ft)	Inclination (°)	Azimuth (°)	Vertical Depth (ft)	+N/-S (ft)	+E/-W (ft)	Dogleg Rate (°/100ft)	Build Rate (°/100ft)	Turn Rate (°/100ft)	TFO (°)	Target
0.0	0.00	0.00	0.0	0.0	0.0	0.00	0.00	0.00	0.00	
1,000.0	0.00	0.00	1,000.0	0.0	0.0	0.00	0.00	0.00	0.00	
1,173.0	3.46	269.03	1,172.9	-0.1	-5.2	2.00	2.00	0.00	269.03	
5,636.9	3.46	269.03	5,628.7	-4.7	-274.5	0.00	0.00	0.00	0.00	
5,809.9	0.00	90.30	5,801.5	-4.8	-279.8	2.00	-2.00	0.00	180.00	
6,059.9	0.00	90.30	6,051.5	-4.8	-279.8	0.00	0.00	0.00	90.30	
6,812.4	90.30	90.30	6,529.0	-7.3	200.2	12.00	12.00	0.00	90.30	WT 6-62-3-3340B2
16,415.6	90.30	90.30	6,479.0	-57.8	9,803.1	0.00	0.00	0.00	0.00	WT 6-62-3-3340B2

Bill Barrett Corp

Planning Report

Database:	Compass	Local Co-ordinate Reference:	Well Will Trust 6-62-3-3340B2
Company:	BILL BARRETT CORP	TVD Reference:	KB @ 4833.0ft (Original Well Elev)
Project:	WELD COUNTY, COLORADO	MD Reference:	KB @ 4833.0ft (Original Well Elev)
Site:	Will Trust 6-62-3_2 NWSW Pad	North Reference:	True
Well:	Will Trust 6-62-3-3340B2	Survey Calculation Method:	Minimum Curvature
Wellbore:	Wellbore #1		
Design:	Design #1		

Planned Survey									
Measured Depth (ft)	Inclination (°)	Azimuth (°)	Vertical Depth (ft)	+N/-S (ft)	+E/-W (ft)	Vertical Section (ft)	Dogleg Rate (°/100ft)	Build Rate (°/100ft)	Turn Rate (°/100ft)
0.0	0.00	0.00	0.0	0.0	0.0	0.0	0.00	0.00	0.00
100.0	0.00	0.00	100.0	0.0	0.0	0.0	0.00	0.00	0.00
200.0	0.00	0.00	200.0	0.0	0.0	0.0	0.00	0.00	0.00
300.0	0.00	0.00	300.0	0.0	0.0	0.0	0.00	0.00	0.00
400.0	0.00	0.00	400.0	0.0	0.0	0.0	0.00	0.00	0.00
500.0	0.00	0.00	500.0	0.0	0.0	0.0	0.00	0.00	0.00
600.0	0.00	0.00	600.0	0.0	0.0	0.0	0.00	0.00	0.00
700.0	0.00	0.00	700.0	0.0	0.0	0.0	0.00	0.00	0.00
800.0	0.00	0.00	800.0	0.0	0.0	0.0	0.00	0.00	0.00
900.0	0.00	0.00	900.0	0.0	0.0	0.0	0.00	0.00	0.00
1,000.0	0.00	0.00	1,000.0	0.0	0.0	0.0	0.00	0.00	0.00
1,100.0	2.00	269.03	1,100.0	0.0	-1.7	-1.7	2.00	2.00	0.00
1,173.0	3.46	269.03	1,172.9	-0.1	-5.2	-5.2	2.00	2.00	0.00
1,200.0	3.46	269.03	1,199.8	-0.1	-6.9	-6.8	0.00	0.00	0.00
1,300.0	3.46	269.03	1,299.7	-0.2	-12.9	-12.9	0.00	0.00	0.00
1,400.0	3.46	269.03	1,399.5	-0.3	-18.9	-18.9	0.00	0.00	0.00
1,500.0	3.46	269.03	1,499.3	-0.4	-24.9	-24.9	0.00	0.00	0.00
1,600.0	3.46	269.03	1,599.1	-0.5	-31.0	-31.0	0.00	0.00	0.00
1,700.0	3.46	269.03	1,698.9	-0.6	-37.0	-37.0	0.00	0.00	0.00
1,800.0	3.46	269.03	1,798.8	-0.7	-43.0	-43.0	0.00	0.00	0.00
1,900.0	3.46	269.03	1,898.6	-0.8	-49.1	-49.1	0.00	0.00	0.00
2,000.0	3.46	269.03	1,998.4	-0.9	-55.1	-55.1	0.00	0.00	0.00
2,100.0	3.46	269.03	2,098.2	-1.0	-61.1	-61.1	0.00	0.00	0.00
2,200.0	3.46	269.03	2,198.0	-1.1	-67.2	-67.2	0.00	0.00	0.00
2,300.0	3.46	269.03	2,297.8	-1.2	-73.2	-73.2	0.00	0.00	0.00
2,400.0	3.46	269.03	2,397.7	-1.3	-79.2	-79.2	0.00	0.00	0.00
2,500.0	3.46	269.03	2,497.5	-1.4	-85.3	-85.3	0.00	0.00	0.00
2,600.0	3.46	269.03	2,597.3	-1.6	-91.3	-91.3	0.00	0.00	0.00
2,700.0	3.46	269.03	2,697.1	-1.7	-97.3	-97.3	0.00	0.00	0.00
2,800.0	3.46	269.03	2,796.9	-1.8	-103.4	-103.4	0.00	0.00	0.00
2,900.0	3.46	269.03	2,896.7	-1.9	-109.4	-109.4	0.00	0.00	0.00
3,000.0	3.46	269.03	2,996.6	-2.0	-115.4	-115.4	0.00	0.00	0.00
3,100.0	3.46	269.03	3,096.4	-2.1	-121.5	-121.5	0.00	0.00	0.00
3,200.0	3.46	269.03	3,196.2	-2.2	-127.5	-127.5	0.00	0.00	0.00
3,300.0	3.46	269.03	3,296.0	-2.3	-133.5	-133.5	0.00	0.00	0.00
3,400.0	3.46	269.03	3,395.8	-2.4	-139.6	-139.6	0.00	0.00	0.00
3,500.0	3.46	269.03	3,495.7	-2.5	-145.6	-145.6	0.00	0.00	0.00
3,600.0	3.46	269.03	3,595.5	-2.6	-151.6	-151.6	0.00	0.00	0.00
3,700.0	3.46	269.03	3,695.3	-2.7	-157.7	-157.7	0.00	0.00	0.00
3,800.0	3.46	269.03	3,795.1	-2.8	-163.7	-163.7	0.00	0.00	0.00
3,900.0	3.46	269.03	3,894.9	-2.9	-169.7	-169.7	0.00	0.00	0.00
4,000.0	3.46	269.03	3,994.7	-3.0	-175.8	-175.8	0.00	0.00	0.00
4,100.0	3.46	269.03	4,094.6	-3.1	-181.8	-181.8	0.00	0.00	0.00
4,200.0	3.46	269.03	4,194.4	-3.2	-187.8	-187.8	0.00	0.00	0.00
4,300.0	3.46	269.03	4,294.2	-3.3	-193.9	-193.9	0.00	0.00	0.00
4,400.0	3.46	269.03	4,394.0	-3.4	-199.9	-199.9	0.00	0.00	0.00
4,500.0	3.46	269.03	4,493.8	-3.5	-205.9	-205.9	0.00	0.00	0.00
4,600.0	3.46	269.03	4,593.7	-3.6	-212.0	-212.0	0.00	0.00	0.00
4,700.0	3.46	269.03	4,693.5	-3.7	-218.0	-218.0	0.00	0.00	0.00
4,800.0	3.46	269.03	4,793.3	-3.8	-224.0	-224.0	0.00	0.00	0.00
4,900.0	3.46	269.03	4,893.1	-3.9	-230.1	-230.1	0.00	0.00	0.00
5,000.0	3.46	269.03	4,992.9	-4.0	-236.1	-236.1	0.00	0.00	0.00
5,100.0	3.46	269.03	5,092.7	-4.1	-242.1	-242.1	0.00	0.00	0.00
5,200.0	3.46	269.03	5,192.6	-4.2	-248.2	-248.1	0.00	0.00	0.00

Bill Barrett Corp

Planning Report

Database:	Compass	Local Co-ordinate Reference:	Well Will Trust 6-62-3-3340B2
Company:	BILL BARRETT CORP	TVD Reference:	KB @ 4833.0ft (Original Well Elev)
Project:	WELD COUNTY, COLORADO	MD Reference:	KB @ 4833.0ft (Original Well Elev)
Site:	Will Trust 6-62-3_2 NWSW Pad	North Reference:	True
Well:	Will Trust 6-62-3-3340B2	Survey Calculation Method:	Minimum Curvature
Wellbore:	Wellbore #1		
Design:	Design #1		

Planned Survey									
Measured Depth (ft)	Inclination (°)	Azimuth (°)	Vertical Depth (ft)	+N/-S (ft)	+E/-W (ft)	Vertical Section (ft)	Dogleg Rate (°/100ft)	Build Rate (°/100ft)	Turn Rate (°/100ft)
5,300.0	3.46	269.03	5,292.4	-4.3	-254.2	-254.2	0.00	0.00	0.00
5,400.0	3.46	269.03	5,392.2	-4.4	-260.2	-260.2	0.00	0.00	0.00
5,500.0	3.46	269.03	5,492.0	-4.5	-266.3	-266.2	0.00	0.00	0.00
5,600.0	3.46	269.03	5,591.8	-4.6	-272.3	-272.3	0.00	0.00	0.00
5,636.9	3.46	269.03	5,628.7	-4.7	-274.5	-274.5	0.00	0.00	0.00
5,700.0	2.20	269.03	5,691.7	-4.7	-277.6	-277.6	2.00	-2.00	0.00
5,800.0	0.20	269.03	5,791.7	-4.8	-279.7	-279.7	2.00	-2.00	0.00
5,809.9	0.00	90.30	5,801.5	-4.8	-279.8	-279.7	2.00	-2.00	0.00
5,900.0	0.00	90.30	5,891.7	-4.8	-279.8	-279.7	0.00	0.00	0.00
6,000.0	0.00	90.30	5,991.7	-4.8	-279.8	-279.7	0.00	0.00	0.00
6,059.9	0.00	90.30	6,051.5	-4.8	-279.8	-279.7	0.00	0.00	0.00
6,100.0	4.81	90.30	6,091.6	-4.8	-278.1	-278.0	12.00	12.00	0.00
6,200.0	16.81	90.30	6,189.7	-4.9	-259.3	-259.3	12.00	12.00	0.00
6,300.0	28.81	90.30	6,281.7	-5.1	-220.6	-220.6	12.00	12.00	0.00
6,400.0	40.81	90.30	6,363.6	-5.4	-163.7	-163.6	12.00	12.00	0.00
6,500.0	52.81	90.30	6,431.9	-5.7	-90.9	-90.8	12.00	12.00	0.00
6,600.0	64.81	90.30	6,483.6	-6.2	-5.5	-5.4	12.00	12.00	0.00
6,700.0	76.81	90.30	6,516.4	-6.7	88.8	88.8	12.00	12.00	0.00
6,800.0	88.81	90.30	6,528.9	-7.2	187.8	187.9	12.00	12.00	0.00
6,812.4	90.30	90.30	6,529.0	-7.3	200.2	200.2	12.00	12.00	0.00
WT 6-62-3-3340B2 LP									
6,900.0	90.30	90.30	6,528.5	-7.7	287.8	287.9	0.00	0.00	0.00
7,000.0	90.30	90.30	6,528.0	-8.3	387.8	387.9	0.00	0.00	0.00
7,100.0	90.30	90.30	6,527.5	-8.8	487.8	487.9	0.00	0.00	0.00
7,200.0	90.30	90.30	6,527.0	-9.3	587.8	587.9	0.00	0.00	0.00
7,300.0	90.30	90.30	6,526.5	-9.8	687.8	687.8	0.00	0.00	0.00
7,400.0	90.30	90.30	6,525.9	-10.4	787.8	787.8	0.00	0.00	0.00
7,500.0	90.30	90.30	6,525.4	-10.9	887.8	887.8	0.00	0.00	0.00
7,600.0	90.30	90.30	6,524.9	-11.4	987.8	987.8	0.00	0.00	0.00
7,700.0	90.30	90.30	6,524.4	-11.9	1,087.8	1,087.8	0.00	0.00	0.00
7,800.0	90.30	90.30	6,523.9	-12.5	1,187.8	1,187.8	0.00	0.00	0.00
7,900.0	90.30	90.30	6,523.3	-13.0	1,287.8	1,287.8	0.00	0.00	0.00
8,000.0	90.30	90.30	6,522.8	-13.5	1,387.8	1,387.8	0.00	0.00	0.00
8,100.0	90.30	90.30	6,522.3	-14.1	1,487.8	1,487.8	0.00	0.00	0.00
8,200.0	90.30	90.30	6,521.8	-14.6	1,587.8	1,587.8	0.00	0.00	0.00
8,300.0	90.30	90.30	6,521.3	-15.1	1,687.8	1,687.8	0.00	0.00	0.00
8,400.0	90.30	90.30	6,520.7	-15.6	1,787.8	1,787.8	0.00	0.00	0.00
8,500.0	90.30	90.30	6,520.2	-16.2	1,887.8	1,887.8	0.00	0.00	0.00
8,600.0	90.30	90.30	6,519.7	-16.7	1,987.8	1,987.8	0.00	0.00	0.00
8,700.0	90.30	90.30	6,519.2	-17.2	2,087.8	2,087.8	0.00	0.00	0.00
8,800.0	90.30	90.30	6,518.7	-17.7	2,187.8	2,187.8	0.00	0.00	0.00
8,900.0	90.30	90.30	6,518.1	-18.3	2,287.8	2,287.8	0.00	0.00	0.00
9,000.0	90.30	90.30	6,517.6	-18.8	2,387.8	2,387.8	0.00	0.00	0.00
9,100.0	90.30	90.30	6,517.1	-19.3	2,487.8	2,487.8	0.00	0.00	0.00
9,200.0	90.30	90.30	6,516.6	-19.8	2,587.8	2,587.8	0.00	0.00	0.00
9,300.0	90.30	90.30	6,516.0	-20.4	2,687.7	2,687.8	0.00	0.00	0.00
9,400.0	90.30	90.30	6,515.5	-20.9	2,787.7	2,787.8	0.00	0.00	0.00
9,500.0	90.30	90.30	6,515.0	-21.4	2,887.7	2,887.8	0.00	0.00	0.00
9,600.0	90.30	90.30	6,514.5	-21.9	2,987.7	2,987.8	0.00	0.00	0.00
9,700.0	90.30	90.30	6,514.0	-22.5	3,087.7	3,087.8	0.00	0.00	0.00
9,800.0	90.30	90.30	6,513.4	-23.0	3,187.7	3,187.8	0.00	0.00	0.00
9,900.0	90.30	90.30	6,512.9	-23.5	3,287.7	3,287.8	0.00	0.00	0.00
10,000.0	90.30	90.30	6,512.4	-24.0	3,387.7	3,387.8	0.00	0.00	0.00

Bill Barrett Corp

Planning Report

Database:	Compass	Local Co-ordinate Reference:	Well Will Trust 6-62-3-3340B2
Company:	BILL BARRETT CORP	TVD Reference:	KB @ 4833.0ft (Original Well Elev)
Project:	WELD COUNTY, COLORADO	MD Reference:	KB @ 4833.0ft (Original Well Elev)
Site:	Will Trust 6-62-3_2 NWSW Pad	North Reference:	True
Well:	Will Trust 6-62-3-3340B2	Survey Calculation Method:	Minimum Curvature
Wellbore:	Wellbore #1		
Design:	Design #1		

Planned Survey										
Measured Depth (ft)	Inclination (°)	Azimuth (°)	Vertical Depth (ft)	+N/-S (ft)	+E/-W (ft)	Vertical Section (ft)	Dogleg Rate (°/100ft)	Build Rate (°/100ft)	Turn Rate (°/100ft)	
10,100.0	90.30	90.30	6,511.9	-24.6	3,487.7	3,487.8	0.00	0.00	0.00	
10,200.0	90.30	90.30	6,511.4	-25.1	3,587.7	3,587.8	0.00	0.00	0.00	
10,300.0	90.30	90.30	6,510.8	-25.6	3,687.7	3,687.8	0.00	0.00	0.00	
10,400.0	90.30	90.30	6,510.3	-26.1	3,787.7	3,787.8	0.00	0.00	0.00	
10,500.0	90.30	90.30	6,509.8	-26.7	3,887.7	3,887.8	0.00	0.00	0.00	
10,600.0	90.30	90.30	6,509.3	-27.2	3,987.7	3,987.8	0.00	0.00	0.00	
10,700.0	90.30	90.30	6,508.8	-27.7	4,087.7	4,087.8	0.00	0.00	0.00	
10,800.0	90.30	90.30	6,508.2	-28.3	4,187.7	4,187.8	0.00	0.00	0.00	
10,900.0	90.30	90.30	6,507.7	-28.8	4,287.7	4,287.8	0.00	0.00	0.00	
11,000.0	90.30	90.30	6,507.2	-29.3	4,387.7	4,387.8	0.00	0.00	0.00	
11,100.0	90.30	90.30	6,506.7	-29.8	4,487.7	4,487.8	0.00	0.00	0.00	
11,200.0	90.30	90.30	6,506.2	-30.4	4,587.7	4,587.8	0.00	0.00	0.00	
11,300.0	90.30	90.30	6,505.6	-30.9	4,687.7	4,687.8	0.00	0.00	0.00	
11,400.0	90.30	90.30	6,505.1	-31.4	4,787.7	4,787.8	0.00	0.00	0.00	
11,500.0	90.30	90.30	6,504.6	-31.9	4,887.7	4,887.8	0.00	0.00	0.00	
11,600.0	90.30	90.30	6,504.1	-32.5	4,987.7	4,987.8	0.00	0.00	0.00	
11,700.0	90.30	90.30	6,503.6	-33.0	5,087.7	5,087.8	0.00	0.00	0.00	
11,800.0	90.30	90.30	6,503.0	-33.5	5,187.7	5,187.8	0.00	0.00	0.00	
11,900.0	90.30	90.30	6,502.5	-34.0	5,287.7	5,287.8	0.00	0.00	0.00	
12,000.0	90.30	90.30	6,502.0	-34.6	5,387.7	5,387.8	0.00	0.00	0.00	
12,100.0	90.30	90.30	6,501.5	-35.1	5,487.7	5,487.8	0.00	0.00	0.00	
12,200.0	90.30	90.30	6,500.9	-35.6	5,587.7	5,587.8	0.00	0.00	0.00	
12,300.0	90.30	90.30	6,500.4	-36.1	5,687.7	5,687.8	0.00	0.00	0.00	
12,400.0	90.30	90.30	6,499.9	-36.7	5,787.7	5,787.8	0.00	0.00	0.00	
12,500.0	90.30	90.30	6,499.4	-37.2	5,887.7	5,887.8	0.00	0.00	0.00	
12,600.0	90.30	90.30	6,498.9	-37.7	5,987.7	5,987.8	0.00	0.00	0.00	
12,700.0	90.30	90.30	6,498.3	-38.2	6,087.7	6,087.8	0.00	0.00	0.00	
12,800.0	90.30	90.30	6,497.8	-38.8	6,187.7	6,187.8	0.00	0.00	0.00	
12,900.0	90.30	90.30	6,497.3	-39.3	6,287.6	6,287.8	0.00	0.00	0.00	
13,000.0	90.30	90.30	6,496.8	-39.8	6,387.6	6,387.8	0.00	0.00	0.00	
13,100.0	90.30	90.30	6,496.3	-40.3	6,487.6	6,487.8	0.00	0.00	0.00	
13,200.0	90.30	90.30	6,495.7	-40.9	6,587.6	6,587.8	0.00	0.00	0.00	
13,300.0	90.30	90.30	6,495.2	-41.4	6,687.6	6,687.8	0.00	0.00	0.00	
13,400.0	90.30	90.30	6,494.7	-41.9	6,787.6	6,787.8	0.00	0.00	0.00	
13,500.0	90.30	90.30	6,494.2	-42.5	6,887.6	6,887.8	0.00	0.00	0.00	
13,600.0	90.30	90.30	6,493.7	-43.0	6,987.6	6,987.8	0.00	0.00	0.00	
13,700.0	90.30	90.30	6,493.1	-43.5	7,087.6	7,087.8	0.00	0.00	0.00	
13,800.0	90.30	90.30	6,492.6	-44.0	7,187.6	7,187.8	0.00	0.00	0.00	
13,900.0	90.30	90.30	6,492.1	-44.6	7,287.6	7,287.8	0.00	0.00	0.00	
14,000.0	90.30	90.30	6,491.6	-45.1	7,387.6	7,387.8	0.00	0.00	0.00	
14,100.0	90.30	90.30	6,491.1	-45.6	7,487.6	7,487.8	0.00	0.00	0.00	
14,200.0	90.30	90.30	6,490.5	-46.1	7,587.6	7,587.8	0.00	0.00	0.00	
14,300.0	90.30	90.30	6,490.0	-46.7	7,687.6	7,687.8	0.00	0.00	0.00	
14,400.0	90.30	90.30	6,489.5	-47.2	7,787.6	7,787.8	0.00	0.00	0.00	
14,500.0	90.30	90.30	6,489.0	-47.7	7,887.6	7,887.8	0.00	0.00	0.00	
14,600.0	90.30	90.30	6,488.5	-48.2	7,987.6	7,987.7	0.00	0.00	0.00	
14,700.0	90.30	90.30	6,487.9	-48.8	8,087.6	8,087.7	0.00	0.00	0.00	
14,800.0	90.30	90.30	6,487.4	-49.3	8,187.6	8,187.7	0.00	0.00	0.00	
14,900.0	90.30	90.30	6,486.9	-49.8	8,287.6	8,287.7	0.00	0.00	0.00	
15,000.0	90.30	90.30	6,486.4	-50.3	8,387.6	8,387.7	0.00	0.00	0.00	
15,100.0	90.30	90.30	6,485.8	-50.9	8,487.6	8,487.7	0.00	0.00	0.00	
15,200.0	90.30	90.30	6,485.3	-51.4	8,587.6	8,587.7	0.00	0.00	0.00	
15,300.0	90.30	90.30	6,484.8	-51.9	8,687.6	8,687.7	0.00	0.00	0.00	
15,400.0	90.30	90.30	6,484.3	-52.4	8,787.6	8,787.7	0.00	0.00	0.00	

Bill Barrett Corp

Planning Report

Database:	Compass	Local Co-ordinate Reference:	Well Will Trust 6-62-3-3340B2
Company:	BILL BARRETT CORP	TVD Reference:	KB @ 4833.0ft (Original Well Elev)
Project:	WELD COUNTY, COLORADO	MD Reference:	KB @ 4833.0ft (Original Well Elev)
Site:	Will Trust 6-62-3_2 NWSW Pad	North Reference:	True
Well:	Will Trust 6-62-3-3340B2	Survey Calculation Method:	Minimum Curvature
Wellbore:	Wellbore #1		
Design:	Design #1		

Planned Survey										
Measured Depth (ft)	Inclination (°)	Azimuth (°)	Vertical Depth (ft)	+N/-S (ft)	+E/-W (ft)	Vertical Section (ft)	Dogleg Rate (°/100ft)	Build Rate (°/100ft)	Turn Rate (°/100ft)	
15,500.0	90.30	90.30	6,483.8	-53.0	8,887.6	8,887.7	0.00	0.00	0.00	
15,600.0	90.30	90.30	6,483.2	-53.5	8,987.6	8,987.7	0.00	0.00	0.00	
15,700.0	90.30	90.30	6,482.7	-54.0	9,087.6	9,087.7	0.00	0.00	0.00	
15,800.0	90.30	90.30	6,482.2	-54.6	9,187.6	9,187.7	0.00	0.00	0.00	
15,900.0	90.30	90.30	6,481.7	-55.1	9,287.6	9,287.7	0.00	0.00	0.00	
16,000.0	90.30	90.30	6,481.2	-55.6	9,387.6	9,387.7	0.00	0.00	0.00	
16,100.0	90.30	90.30	6,480.6	-56.1	9,487.6	9,487.7	0.00	0.00	0.00	
16,200.0	90.30	90.30	6,480.1	-56.7	9,587.6	9,587.7	0.00	0.00	0.00	
16,300.0	90.30	90.30	6,479.6	-57.2	9,687.6	9,687.7	0.00	0.00	0.00	
16,400.0	90.30	90.30	6,479.1	-57.7	9,787.6	9,787.7	0.00	0.00	0.00	
16,415.6	90.30	90.30	6,479.0	-57.8	9,803.1	9,803.3	0.00	0.00	0.00	
WT 6-62-3-3340B2 PBHL										



Bill Barrett Corporation

COMPANY DETAILS: BILL BARRETT CORP

Calculation Method: Minimum Curvature
Error System: ISCWSA
Scan Method: Closest Approach 3D
Error Surface: Elliptical Conic
Warning Method: Error Ratio

REFERENCE INFORMATION

Co-ordinate (N/E) Reference: Well Will Trust 6-62-3-3340B2, True North
Vertical (TVD) Reference: KB @ 4833.0ft (Original Well Elev)
Section (VS) Reference: Slot - (0.0N, 0.0E)
Measured Depth Reference: KB @ 4833.0ft (Original Well Elev)
Calculation Method: Minimum Curvature

WELL DETAILS: Will Trust 6-62-3-3340B2

+N/-S +E/-W Northing Easting Latitude Longitude
0.0 0.0 1432536.11 3328934.5040° 30' 52.880 N 104° 19' 0.890 W

WELLBORE TARGET DETAILS

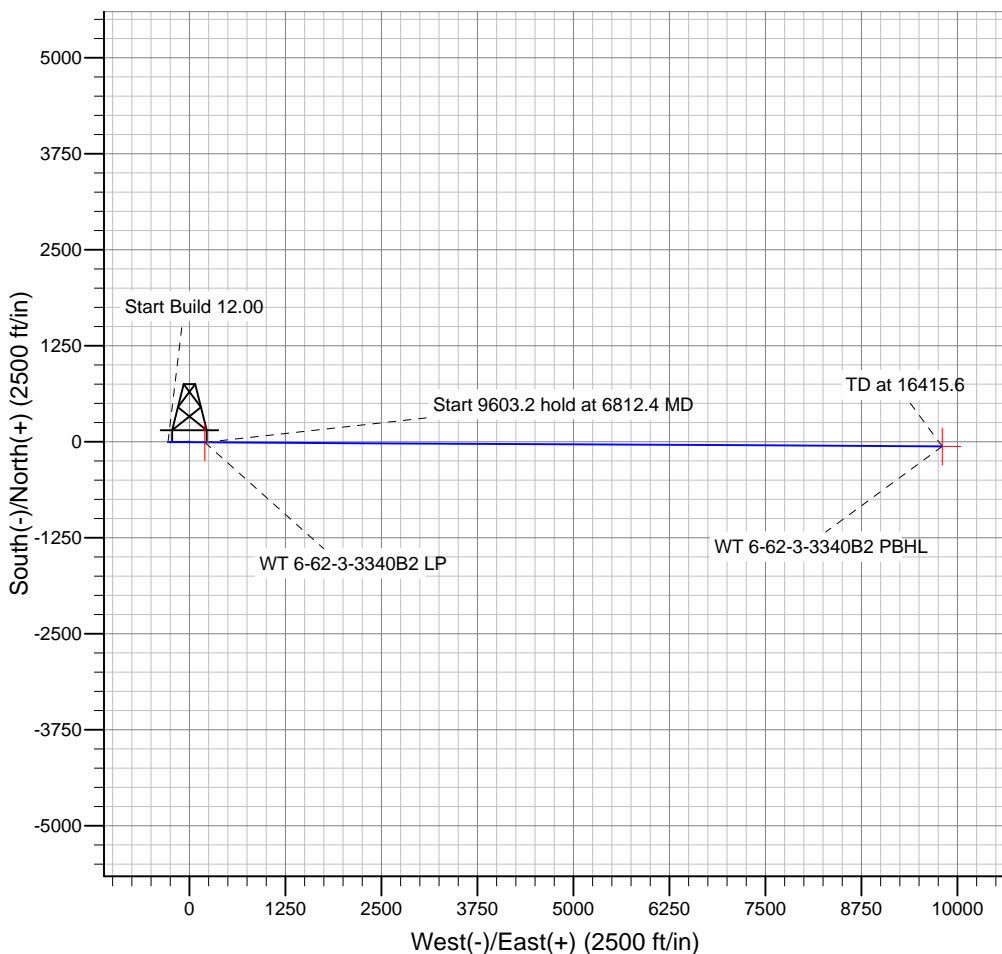
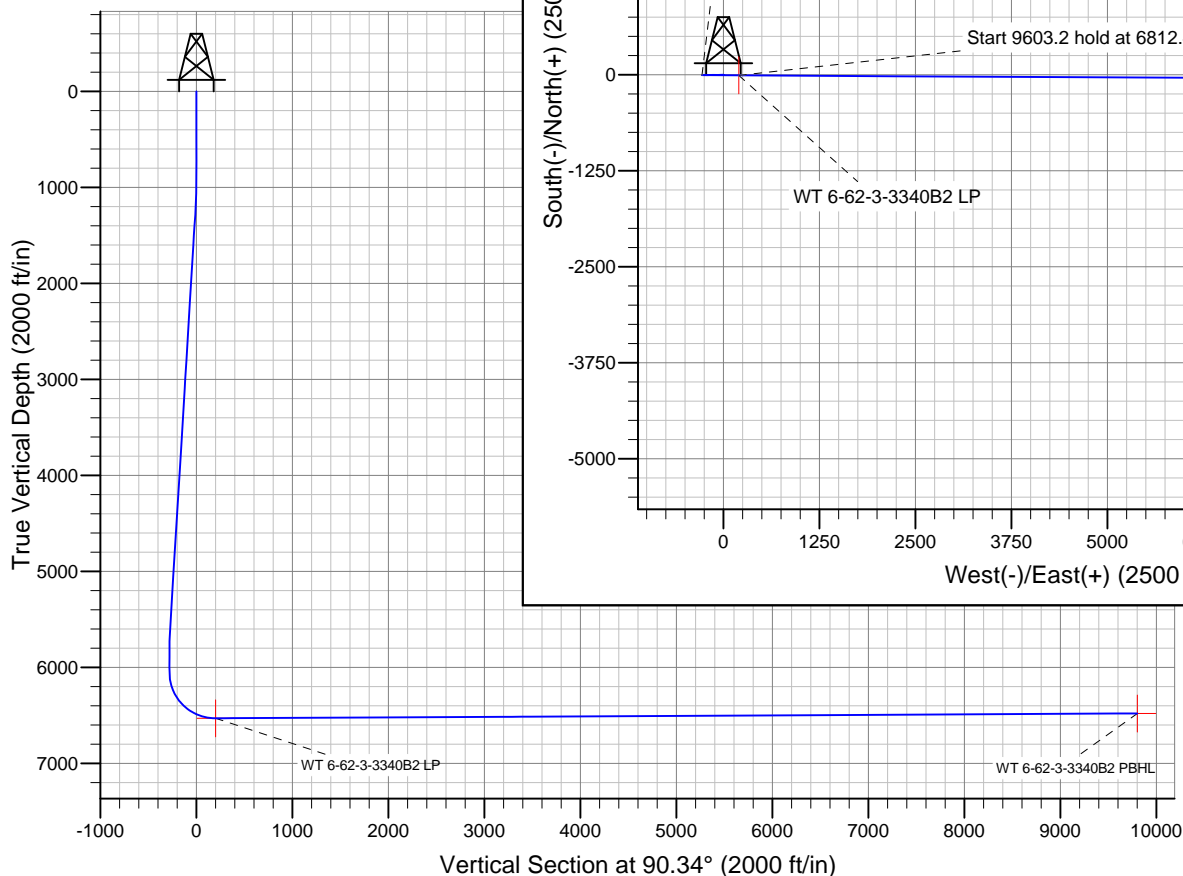
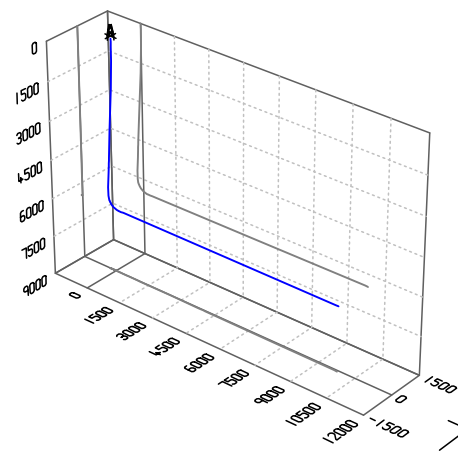
Name	TVD	+N/-S	+E/-W	Shape
WT 6-62-3-3340B2 PBHL	6479.0	-57.8	9803.1	Point
WT 6-62-3-3340B2 LP	6529.0	-7.3	200.2	Point

PROJECT DETAILS: WELD COUNTY, COLORADO

Geodetic System: US State Plane 1983
Datum: North American Datum 1983
Ellipsoid: GRS 1980
Zone: Colorado Northern Zone

SECTION DETAILS

Sec	MD	Inc	Azi	TVD	+N/-S	+E/-W	DLeg	TFace	VSec	Target
1	0.0	0.00	0.00	0.0	0.0	0.0	0.00	0.00	0.0	
2	1000.0	0.00	0.00	1000.0	0.0	0.0	0.00	0.00	0.0	
3	1173.0	3.46	269.03	1172.9	-0.1	-5.2	2.00	269.03	-5.2	
4	5636.9	3.46	269.03	5628.7	-4.7	-274.5	0.00	0.00	-274.5	
5	5809.9	0.00	90.30	5801.5	-4.8	-279.8	2.00	180.00	-279.7	
6	6059.9	0.00	90.30	6051.5	-4.8	-279.8	0.00	90.30	-279.7	
7	6812.4	90.30	90.30	6529.0	-7.3	200.2	12.00	90.30	200.2	WT 6-62-3-3340B2 LP
8	16415.6	90.30	90.30	6479.0	-57.8	9803.1	0.00	0.00	9803.3	WT 6-62-3-3340B2 PBHL



Azimuths to True North
Magnetic North: 8.15°

Magnetic Field
Strength: 52863.5snT
Dip Angle: 67.09°
Date: 12/31/2014
Model: IGRF2010