

BILL BARRETT CORP

**WELD COUNTY, COLORADO
Will Trust 6-62-3_2 NWSW Pad
Will Trust 6-62-3-3340A2**

Wellbore #1

Plan: Design #1

Standard Planning Report

07 March, 2016

Bill Barrett Corp

Planning Report

Database:	Compass	Local Co-ordinate Reference:	Well Will Trust 6-62-3-3340A2
Company:	BILL BARRETT CORP	TVD Reference:	KB @ 4833.0ft (Original Well Elev)
Project:	WELD COUNTY, COLORADO	MD Reference:	KB @ 4833.0ft (Original Well Elev)
Site:	Will Trust 6-62-3_2 NWSW Pad	North Reference:	True
Well:	Will Trust 6-62-3-3340A2	Survey Calculation Method:	Minimum Curvature
Wellbore:	Wellbore #1		
Design:	Design #1		

Project	WELD COUNTY, COLORADO		
Map System:	US State Plane 1983	System Datum:	Mean Sea Level
Geo Datum:	North American Datum 1983		
Map Zone:	Colorado Northern Zone		

Site		Will Trust 6-62-3_2 NWSW Pad				
Site Position:		Northing:	1,432,565.25 ft	Latitude:	40° 30' 53.168 N	
From:	Lat/Long	Easting:	3,328,933.28 ft	Longitude:	104° 19' 0.901 W	
Position Uncertainty:		0.0 ft	Slot Radius:	"	Grid Convergence:	0.76 °

Well	Will Trust 6-62-3-3340A2					
Well Position	+N-S	0.0 ft	Northing:	1,432,565.25 ft	Latitude:	40° 30' 53.168 N
	+E-W	0.0 ft	Easting:	3,328,933.28 ft	Longitude:	104° 19' 0.901 W
Position Uncertainty		0.0 ft	Wellhead Elevation:	ft	Ground Level:	4,817.0 ft

Wellbore	Wellbore #1				
Magnetics	Model Name	Sample Date	Declination (°)	Dip Angle (°)	Field Strength (nT)
	IGRF2010	12/31/2014	8.15	67.09	52,864

Design	Design #1				
Audit Notes:					
Version:	Phase:	PLAN		Tie On Depth:	0.0
Vertical Section:	Depth From (TVD) (ft)	+N/-S (ft)	+E/-W (ft)	Direction (°)	
	0.0	0.0	0.0	88.58	

Plan Sections										
Measured Depth (ft)	Inclination (°)	Azimuth (°)	Vertical Depth (ft)	+N/-S (ft)	+E/-W (ft)	Dogleg Rate (°/100ft)	Build Rate (°/100ft)	Turn Rate (°/100ft)	TFO (°)	Target
0.0	0.00	0.00	0.0	0.0	0.0	0.00	0.00	0.00	0.00	
1,000.0	0.00	0.00	1,000.0	0.0	0.0	0.00	0.00	0.00	0.00	
1,262.7	5.25	316.46	1,262.3	8.7	-8.3	2.00	2.00	0.00	316.46	
5,461.2	5.25	316.46	5,443.2	287.4	-273.1	0.00	0.00	0.00	0.00	
5,723.9	0.00	90.30	5,705.5	296.2	-281.4	2.00	-2.00	0.00	180.00	
5,973.9	0.00	90.30	5,955.5	296.2	-281.4	0.00	0.00	0.00	90.30	
6,726.4	90.30	90.30	6,433.0	293.6	198.5	12.00	12.00	0.00	90.30	WT 6-62-3-3340A2
16,331.4	90.30	90.30	6,383.0	243.1	9,803.3	0.00	0.00	0.00	0.00	WT 6-62-3-3340A2

Bill Barrett Corp

Planning Report

Database:	Compass	Local Co-ordinate Reference:	Well Will Trust 6-62-3-3340A2
Company:	BILL BARRETT CORP	TVD Reference:	KB @ 4833.0ft (Original Well Elev)
Project:	WELD COUNTY, COLORADO	MD Reference:	KB @ 4833.0ft (Original Well Elev)
Site:	Will Trust 6-62-3_2 NWSW Pad	North Reference:	True
Well:	Will Trust 6-62-3-3340A2	Survey Calculation Method:	Minimum Curvature
Wellbore:	Wellbore #1		
Design:	Design #1		

Planned Survey									
Measured Depth (ft)	Inclination (°)	Azimuth (°)	Vertical Depth (ft)	+N/-S (ft)	+E/-W (ft)	Vertical Section (ft)	Dogleg Rate (°/100ft)	Build Rate (°/100ft)	Turn Rate (°/100ft)
0.0	0.00	0.00	0.0	0.0	0.0	0.0	0.00	0.00	0.00
100.0	0.00	0.00	100.0	0.0	0.0	0.0	0.00	0.00	0.00
200.0	0.00	0.00	200.0	0.0	0.0	0.0	0.00	0.00	0.00
300.0	0.00	0.00	300.0	0.0	0.0	0.0	0.00	0.00	0.00
400.0	0.00	0.00	400.0	0.0	0.0	0.0	0.00	0.00	0.00
500.0	0.00	0.00	500.0	0.0	0.0	0.0	0.00	0.00	0.00
600.0	0.00	0.00	600.0	0.0	0.0	0.0	0.00	0.00	0.00
700.0	0.00	0.00	700.0	0.0	0.0	0.0	0.00	0.00	0.00
800.0	0.00	0.00	800.0	0.0	0.0	0.0	0.00	0.00	0.00
900.0	0.00	0.00	900.0	0.0	0.0	0.0	0.00	0.00	0.00
1,000.0	0.00	0.00	1,000.0	0.0	0.0	0.0	0.00	0.00	0.00
1,100.0	2.00	316.46	1,100.0	1.3	-1.2	-1.2	2.00	2.00	0.00
1,200.0	4.00	316.46	1,199.8	5.1	-4.8	-4.7	2.00	2.00	0.00
1,262.7	5.25	316.46	1,262.3	8.7	-8.3	-8.1	2.00	2.00	0.00
1,300.0	5.25	316.46	1,299.5	11.2	-10.6	-10.4	0.00	0.00	0.00
1,400.0	5.25	316.46	1,399.1	17.8	-17.0	-16.5	0.00	0.00	0.00
1,500.0	5.25	316.46	1,498.6	24.5	-23.3	-22.6	0.00	0.00	0.00
1,600.0	5.25	316.46	1,598.2	31.1	-29.6	-28.8	0.00	0.00	0.00
1,700.0	5.25	316.46	1,697.8	37.8	-35.9	-34.9	0.00	0.00	0.00
1,800.0	5.25	316.46	1,797.4	44.4	-42.2	-41.1	0.00	0.00	0.00
1,900.0	5.25	316.46	1,897.0	51.0	-48.5	-47.2	0.00	0.00	0.00
2,000.0	5.25	316.46	1,996.5	57.7	-54.8	-53.4	0.00	0.00	0.00
2,100.0	5.25	316.46	2,096.1	64.3	-61.1	-59.5	0.00	0.00	0.00
2,200.0	5.25	316.46	2,195.7	70.9	-67.4	-65.6	0.00	0.00	0.00
2,300.0	5.25	316.46	2,295.3	77.6	-73.7	-71.8	0.00	0.00	0.00
2,400.0	5.25	316.46	2,394.9	84.2	-80.0	-77.9	0.00	0.00	0.00
2,500.0	5.25	316.46	2,494.4	90.9	-86.3	-84.1	0.00	0.00	0.00
2,600.0	5.25	316.46	2,594.0	97.5	-92.6	-90.2	0.00	0.00	0.00
2,700.0	5.25	316.46	2,693.6	104.1	-99.0	-96.3	0.00	0.00	0.00
2,800.0	5.25	316.46	2,793.2	110.8	-105.3	-102.5	0.00	0.00	0.00
2,900.0	5.25	316.46	2,892.8	117.4	-111.6	-108.6	0.00	0.00	0.00
3,000.0	5.25	316.46	2,992.3	124.1	-117.9	-114.8	0.00	0.00	0.00
3,100.0	5.25	316.46	3,091.9	130.7	-124.2	-120.9	0.00	0.00	0.00
3,200.0	5.25	316.46	3,191.5	137.3	-130.5	-127.1	0.00	0.00	0.00
3,300.0	5.25	316.46	3,291.1	144.0	-136.8	-133.2	0.00	0.00	0.00
3,400.0	5.25	316.46	3,390.7	150.6	-143.1	-139.3	0.00	0.00	0.00
3,500.0	5.25	316.46	3,490.2	157.2	-149.4	-145.5	0.00	0.00	0.00
3,600.0	5.25	316.46	3,589.8	163.9	-155.7	-151.6	0.00	0.00	0.00
3,700.0	5.25	316.46	3,689.4	170.5	-162.0	-157.8	0.00	0.00	0.00
3,800.0	5.25	316.46	3,789.0	177.2	-168.3	-163.9	0.00	0.00	0.00
3,900.0	5.25	316.46	3,888.6	183.8	-174.7	-170.0	0.00	0.00	0.00
4,000.0	5.25	316.46	3,988.1	190.4	-181.0	-176.2	0.00	0.00	0.00
4,100.0	5.25	316.46	4,087.7	197.1	-187.3	-182.3	0.00	0.00	0.00
4,200.0	5.25	316.46	4,187.3	203.7	-193.6	-188.5	0.00	0.00	0.00
4,300.0	5.25	316.46	4,286.9	210.4	-199.9	-194.6	0.00	0.00	0.00
4,400.0	5.25	316.46	4,386.4	217.0	-206.2	-200.8	0.00	0.00	0.00
4,500.0	5.25	316.46	4,486.0	223.6	-212.5	-206.9	0.00	0.00	0.00
4,600.0	5.25	316.46	4,585.6	230.3	-218.8	-213.0	0.00	0.00	0.00
4,700.0	5.25	316.46	4,685.2	236.9	-225.1	-219.2	0.00	0.00	0.00
4,800.0	5.25	316.46	4,784.8	243.5	-231.4	-225.3	0.00	0.00	0.00
4,900.0	5.25	316.46	4,884.3	250.2	-237.7	-231.5	0.00	0.00	0.00
5,000.0	5.25	316.46	4,983.9	256.8	-244.0	-237.6	0.00	0.00	0.00
5,100.0	5.25	316.46	5,083.5	263.5	-250.3	-243.7	0.00	0.00	0.00
5,200.0	5.25	316.46	5,183.1	270.1	-256.7	-249.9	0.00	0.00	0.00

Bill Barrett Corp

Planning Report

Database:	Compass	Local Co-ordinate Reference:	Well Will Trust 6-62-3-3340A2
Company:	BILL BARRETT CORP	TVD Reference:	KB @ 4833.0ft (Original Well Elev)
Project:	WELD COUNTY, COLORADO	MD Reference:	KB @ 4833.0ft (Original Well Elev)
Site:	Will Trust 6-62-3_2 NWSW Pad	North Reference:	True
Well:	Will Trust 6-62-3-3340A2	Survey Calculation Method:	Minimum Curvature
Wellbore:	Wellbore #1		
Design:	Design #1		

Planned Survey									
Measured Depth (ft)	Inclination (°)	Azimuth (°)	Vertical Depth (ft)	+N/-S (ft)	+E/-W (ft)	Vertical Section (ft)	Dogleg Rate (°/100ft)	Build Rate (°/100ft)	Turn Rate (°/100ft)
5,300.0	5.25	316.46	5,282.7	276.7	-263.0	-256.0	0.00	0.00	0.00
5,400.0	5.25	316.46	5,382.2	283.4	-269.3	-262.2	0.00	0.00	0.00
5,461.2	5.25	316.46	5,443.2	287.4	-273.1	-265.9	0.00	0.00	0.00
5,500.0	4.48	316.46	5,481.9	289.8	-275.4	-268.1	2.00	-2.00	0.00
5,600.0	2.48	316.46	5,581.7	294.2	-279.6	-272.2	2.00	-2.00	0.00
5,700.0	0.48	316.46	5,681.6	296.1	-281.4	-273.9	2.00	-2.00	0.00
5,723.9	0.00	90.30	5,705.5	296.2	-281.4	-274.0	2.00	-2.00	0.00
5,800.0	0.00	90.30	5,781.6	296.2	-281.4	-274.0	0.00	0.00	0.00
5,900.0	0.00	90.30	5,881.6	296.2	-281.4	-274.0	0.00	0.00	0.00
5,973.9	0.00	90.30	5,955.5	296.2	-281.4	-274.0	0.00	0.00	0.00
6,000.0	3.13	90.30	5,981.6	296.2	-280.7	-273.3	12.00	12.00	0.00
6,100.0	15.13	90.30	6,080.2	296.1	-264.9	-257.5	12.00	12.00	0.00
6,200.0	27.13	90.30	6,173.3	295.9	-228.9	-221.5	12.00	12.00	0.00
6,300.0	39.13	90.30	6,256.9	295.6	-174.3	-167.0	12.00	12.00	0.00
6,400.0	51.13	90.30	6,327.3	295.2	-103.6	-96.3	12.00	12.00	0.00
6,500.0	63.13	90.30	6,381.5	294.8	-19.8	-12.5	12.00	12.00	0.00
6,600.0	75.13	90.30	6,417.0	294.3	73.5	80.8	12.00	12.00	0.00
6,700.0	87.13	90.30	6,432.4	293.8	172.1	179.4	12.00	12.00	0.00
6,726.4	90.30	90.30	6,433.0	293.6	198.5	205.7	12.00	12.00	0.00
WT 6-62-3-3340A2 LP									
6,800.0	90.30	90.30	6,432.6	293.2	272.1	279.3	0.00	0.00	0.00
6,900.0	90.30	90.30	6,432.1	292.7	372.1	379.3	0.00	0.00	0.00
7,000.0	90.30	90.30	6,431.6	292.2	472.1	479.2	0.00	0.00	0.00
7,100.0	90.30	90.30	6,431.1	291.7	572.1	579.2	0.00	0.00	0.00
7,200.0	90.30	90.30	6,430.5	291.1	672.1	679.1	0.00	0.00	0.00
7,300.0	90.30	90.30	6,430.0	290.6	772.1	779.1	0.00	0.00	0.00
7,400.0	90.30	90.30	6,429.5	290.1	872.1	879.0	0.00	0.00	0.00
7,500.0	90.30	90.30	6,429.0	289.6	972.1	979.0	0.00	0.00	0.00
7,600.0	90.30	90.30	6,428.5	289.0	1,072.1	1,078.9	0.00	0.00	0.00
7,700.0	90.30	90.30	6,427.9	288.5	1,172.1	1,178.9	0.00	0.00	0.00
7,800.0	90.30	90.30	6,427.4	288.0	1,272.1	1,278.8	0.00	0.00	0.00
7,900.0	90.30	90.30	6,426.9	287.5	1,372.1	1,378.8	0.00	0.00	0.00
8,000.0	90.30	90.30	6,426.4	286.9	1,472.1	1,478.7	0.00	0.00	0.00
8,100.0	90.30	90.30	6,425.8	286.4	1,572.1	1,578.7	0.00	0.00	0.00
8,200.0	90.30	90.30	6,425.3	285.9	1,672.1	1,678.6	0.00	0.00	0.00
8,300.0	90.30	90.30	6,424.8	285.4	1,772.1	1,778.6	0.00	0.00	0.00
8,400.0	90.30	90.30	6,424.3	284.8	1,872.1	1,878.6	0.00	0.00	0.00
8,500.0	90.30	90.30	6,423.8	284.3	1,972.1	1,978.5	0.00	0.00	0.00
8,600.0	90.30	90.30	6,423.2	283.8	2,072.1	2,078.5	0.00	0.00	0.00
8,700.0	90.30	90.30	6,422.7	283.3	2,172.1	2,178.4	0.00	0.00	0.00
8,800.0	90.30	90.30	6,422.2	282.7	2,272.1	2,278.4	0.00	0.00	0.00
8,900.0	90.30	90.30	6,421.7	282.2	2,372.1	2,378.3	0.00	0.00	0.00
9,000.0	90.30	90.30	6,421.2	281.7	2,472.1	2,478.3	0.00	0.00	0.00
9,100.0	90.30	90.30	6,420.6	281.2	2,572.0	2,578.2	0.00	0.00	0.00
9,200.0	90.30	90.30	6,420.1	280.6	2,672.0	2,678.2	0.00	0.00	0.00
9,300.0	90.30	90.30	6,419.6	280.1	2,772.0	2,778.1	0.00	0.00	0.00
9,400.0	90.30	90.30	6,419.1	279.6	2,872.0	2,878.1	0.00	0.00	0.00
9,500.0	90.30	90.30	6,418.6	279.1	2,972.0	2,978.0	0.00	0.00	0.00
9,600.0	90.30	90.30	6,418.0	278.5	3,072.0	3,078.0	0.00	0.00	0.00
9,700.0	90.30	90.30	6,417.5	278.0	3,172.0	3,177.9	0.00	0.00	0.00
9,800.0	90.30	90.30	6,417.0	277.5	3,272.0	3,277.9	0.00	0.00	0.00
9,900.0	90.30	90.30	6,416.5	276.9	3,372.0	3,377.9	0.00	0.00	0.00
10,000.0	90.30	90.30	6,416.0	276.4	3,472.0	3,477.8	0.00	0.00	0.00

Bill Barrett Corp

Planning Report

Database:	Compass	Local Co-ordinate Reference:	Well Will Trust 6-62-3-3340A2
Company:	BILL BARRETT CORP	TVD Reference:	KB @ 4833.0ft (Original Well Elev)
Project:	WELD COUNTY, COLORADO	MD Reference:	KB @ 4833.0ft (Original Well Elev)
Site:	Will Trust 6-62-3_2 NWSW Pad	North Reference:	True
Well:	Will Trust 6-62-3-3340A2	Survey Calculation Method:	Minimum Curvature
Wellbore:	Wellbore #1		
Design:	Design #1		

Planned Survey									
Measured Depth (ft)	Inclination (°)	Azimuth (°)	Vertical Depth (ft)	+N/-S (ft)	+E/-W (ft)	Vertical Section (ft)	Dogleg Rate (°/100ft)	Build Rate (°/100ft)	Turn Rate (°/100ft)
10,100.0	90.30	90.30	6,415.4	275.9	3,572.0	3,577.8	0.00	0.00	0.00
10,200.0	90.30	90.30	6,414.9	275.4	3,672.0	3,677.7	0.00	0.00	0.00
10,300.0	90.30	90.30	6,414.4	274.8	3,772.0	3,777.7	0.00	0.00	0.00
10,400.0	90.30	90.30	6,413.9	274.3	3,872.0	3,877.6	0.00	0.00	0.00
10,500.0	90.30	90.30	6,413.4	273.8	3,972.0	3,977.6	0.00	0.00	0.00
10,600.0	90.30	90.30	6,412.8	273.3	4,072.0	4,077.5	0.00	0.00	0.00
10,700.0	90.30	90.30	6,412.3	272.7	4,172.0	4,177.5	0.00	0.00	0.00
10,800.0	90.30	90.30	6,411.8	272.2	4,272.0	4,277.4	0.00	0.00	0.00
10,900.0	90.30	90.30	6,411.3	271.7	4,372.0	4,377.4	0.00	0.00	0.00
11,000.0	90.30	90.30	6,410.8	271.2	4,472.0	4,477.3	0.00	0.00	0.00
11,100.0	90.30	90.30	6,410.2	270.6	4,572.0	4,577.3	0.00	0.00	0.00
11,200.0	90.30	90.30	6,409.7	270.1	4,672.0	4,677.3	0.00	0.00	0.00
11,300.0	90.30	90.30	6,409.2	269.6	4,772.0	4,777.2	0.00	0.00	0.00
11,400.0	90.30	90.30	6,408.7	269.1	4,872.0	4,877.2	0.00	0.00	0.00
11,500.0	90.30	90.30	6,408.2	268.5	4,972.0	4,977.1	0.00	0.00	0.00
11,600.0	90.30	90.30	6,407.6	268.0	5,072.0	5,077.1	0.00	0.00	0.00
11,700.0	90.30	90.30	6,407.1	267.5	5,172.0	5,177.0	0.00	0.00	0.00
11,800.0	90.30	90.30	6,406.6	267.0	5,272.0	5,277.0	0.00	0.00	0.00
11,900.0	90.30	90.30	6,406.1	266.4	5,372.0	5,376.9	0.00	0.00	0.00
12,000.0	90.30	90.30	6,405.5	265.9	5,472.0	5,476.9	0.00	0.00	0.00
12,100.0	90.30	90.30	6,405.0	265.4	5,572.0	5,576.8	0.00	0.00	0.00
12,200.0	90.30	90.30	6,404.5	264.9	5,672.0	5,676.8	0.00	0.00	0.00
12,300.0	90.30	90.30	6,404.0	264.3	5,772.0	5,776.7	0.00	0.00	0.00
12,400.0	90.30	90.30	6,403.5	263.8	5,872.0	5,876.7	0.00	0.00	0.00
12,500.0	90.30	90.30	6,402.9	263.3	5,972.0	5,976.6	0.00	0.00	0.00
12,600.0	90.30	90.30	6,402.4	262.7	6,072.0	6,076.6	0.00	0.00	0.00
12,700.0	90.30	90.30	6,401.9	262.2	6,171.9	6,176.6	0.00	0.00	0.00
12,800.0	90.30	90.30	6,401.4	261.7	6,271.9	6,276.5	0.00	0.00	0.00
12,900.0	90.30	90.30	6,400.9	261.2	6,371.9	6,376.5	0.00	0.00	0.00
13,000.0	90.30	90.30	6,400.3	260.6	6,471.9	6,476.4	0.00	0.00	0.00
13,100.0	90.30	90.30	6,399.8	260.1	6,571.9	6,576.4	0.00	0.00	0.00
13,200.0	90.30	90.30	6,399.3	259.6	6,671.9	6,676.3	0.00	0.00	0.00
13,300.0	90.30	90.30	6,398.8	259.1	6,771.9	6,776.3	0.00	0.00	0.00
13,400.0	90.30	90.30	6,398.3	258.5	6,871.9	6,876.2	0.00	0.00	0.00
13,500.0	90.30	90.30	6,397.7	258.0	6,971.9	6,976.2	0.00	0.00	0.00
13,600.0	90.30	90.30	6,397.2	257.5	7,071.9	7,076.1	0.00	0.00	0.00
13,700.0	90.30	90.30	6,396.7	257.0	7,171.9	7,176.1	0.00	0.00	0.00
13,800.0	90.30	90.30	6,396.2	256.4	7,271.9	7,276.0	0.00	0.00	0.00
13,900.0	90.30	90.30	6,395.7	255.9	7,371.9	7,376.0	0.00	0.00	0.00
14,000.0	90.30	90.30	6,395.1	255.4	7,471.9	7,475.9	0.00	0.00	0.00
14,100.0	90.30	90.30	6,394.6	254.9	7,571.9	7,575.9	0.00	0.00	0.00
14,200.0	90.30	90.30	6,394.1	254.3	7,671.9	7,675.9	0.00	0.00	0.00
14,300.0	90.30	90.30	6,393.6	253.8	7,771.9	7,775.8	0.00	0.00	0.00
14,400.0	90.30	90.30	6,393.1	253.3	7,871.9	7,875.8	0.00	0.00	0.00
14,500.0	90.30	90.30	6,392.5	252.8	7,971.9	7,975.7	0.00	0.00	0.00
14,600.0	90.30	90.30	6,392.0	252.2	8,071.9	8,075.7	0.00	0.00	0.00
14,700.0	90.30	90.30	6,391.5	251.7	8,171.9	8,175.6	0.00	0.00	0.00
14,800.0	90.30	90.30	6,391.0	251.2	8,271.9	8,275.6	0.00	0.00	0.00
14,900.0	90.30	90.30	6,390.5	250.7	8,371.9	8,375.5	0.00	0.00	0.00
15,000.0	90.30	90.30	6,389.9	250.1	8,471.9	8,475.5	0.00	0.00	0.00
15,100.0	90.30	90.30	6,389.4	249.6	8,571.9	8,575.4	0.00	0.00	0.00
15,200.0	90.30	90.30	6,388.9	249.1	8,671.9	8,675.4	0.00	0.00	0.00
15,300.0	90.30	90.30	6,388.4	248.5	8,771.9	8,775.3	0.00	0.00	0.00
15,400.0	90.30	90.30	6,387.8	248.0	8,871.9	8,875.3	0.00	0.00	0.00

Bill Barrett Corp

Planning Report

Database:	Compass	Local Co-ordinate Reference:	Well Will Trust 6-62-3-3340A2
Company:	BILL BARRETT CORP	TVD Reference:	KB @ 4833.0ft (Original Well Elev)
Project:	WELD COUNTY, COLORADO	MD Reference:	KB @ 4833.0ft (Original Well Elev)
Site:	Will Trust 6-62-3_2 NWSW Pad	North Reference:	True
Well:	Will Trust 6-62-3-3340A2	Survey Calculation Method:	Minimum Curvature
Wellbore:	Wellbore #1		
Design:	Design #1		

Planned Survey										
Measured Depth (ft)	Inclination (°)	Azimuth (°)	Vertical Depth (ft)	+N/-S (ft)	+E/-W (ft)	Vertical Section (ft)	Dogleg Rate (°/100ft)	Build Rate (°/100ft)	Turn Rate (°/100ft)	
15,500.0	90.30	90.30	6,387.3	247.5	8,971.9	8,975.3	0.00	0.00	0.00	
15,600.0	90.30	90.30	6,386.8	247.0	9,071.9	9,075.2	0.00	0.00	0.00	
15,700.0	90.30	90.30	6,386.3	246.4	9,171.9	9,175.2	0.00	0.00	0.00	
15,800.0	90.30	90.30	6,385.8	245.9	9,271.9	9,275.1	0.00	0.00	0.00	
15,900.0	90.30	90.30	6,385.2	245.4	9,371.9	9,375.1	0.00	0.00	0.00	
16,000.0	90.30	90.30	6,384.7	244.9	9,471.9	9,475.0	0.00	0.00	0.00	
16,100.0	90.30	90.30	6,384.2	244.3	9,571.9	9,575.0	0.00	0.00	0.00	
16,200.0	90.30	90.30	6,383.7	243.8	9,671.9	9,674.9	0.00	0.00	0.00	
16,300.0	90.30	90.30	6,383.2	243.3	9,771.9	9,774.9	0.00	0.00	0.00	
16,331.4	90.30	90.30	6,383.0	243.1	9,803.3	9,806.3	0.00	0.00	0.00	
WT 6-62-3-3340A2 PBHL										



Bill Barrett Corporation

COMPANY DETAILS: BILL BARRETT CORP

Calculation Method: Minimum Curvature
Error System: ISCWSA
Scan Method: Closest Approach 3D
Error Surface: Elliptical Conic
Warning Method: Error Ratio

REFERENCE INFORMATION

Co-ordinate (N/E) Reference: Well Will Trust 6-62-3-3340A2, True North
Vertical (TVD) Reference: KB @ 4833.0ft (Original Well Elev)
Section (VS) Reference: Slot - (0.0N, 0.0E)
Measured Depth Reference: KB @ 4833.0ft (Original Well Elev)
Calculation Method: Minimum Curvature

WELL DETAILS: Will Trust 6-62-3-3340A2

+N/-S	+E/-W	Northing	Easting	Latitude	Longitude
0.0	0.0	1432565.25	3328933.284	40° 30' 53.168 N	104° 19' 0.901 W

WELLBORE TARGET DETAILS

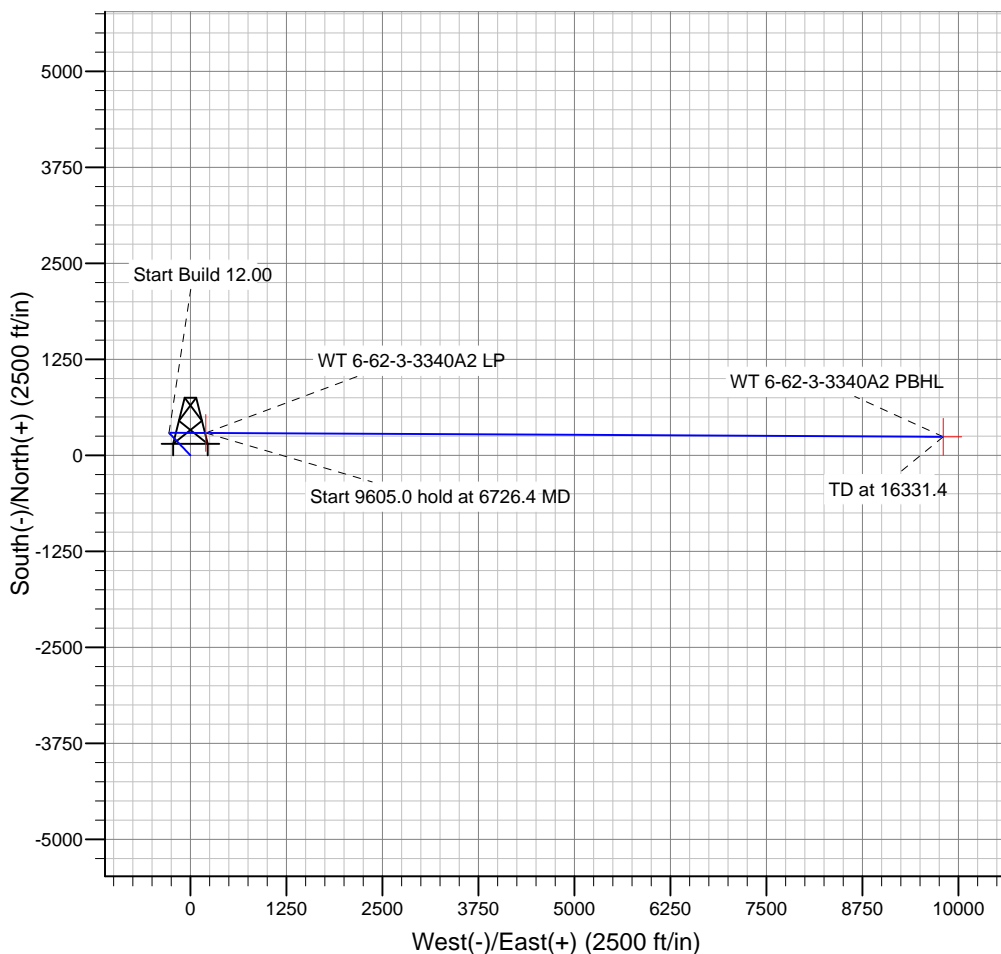
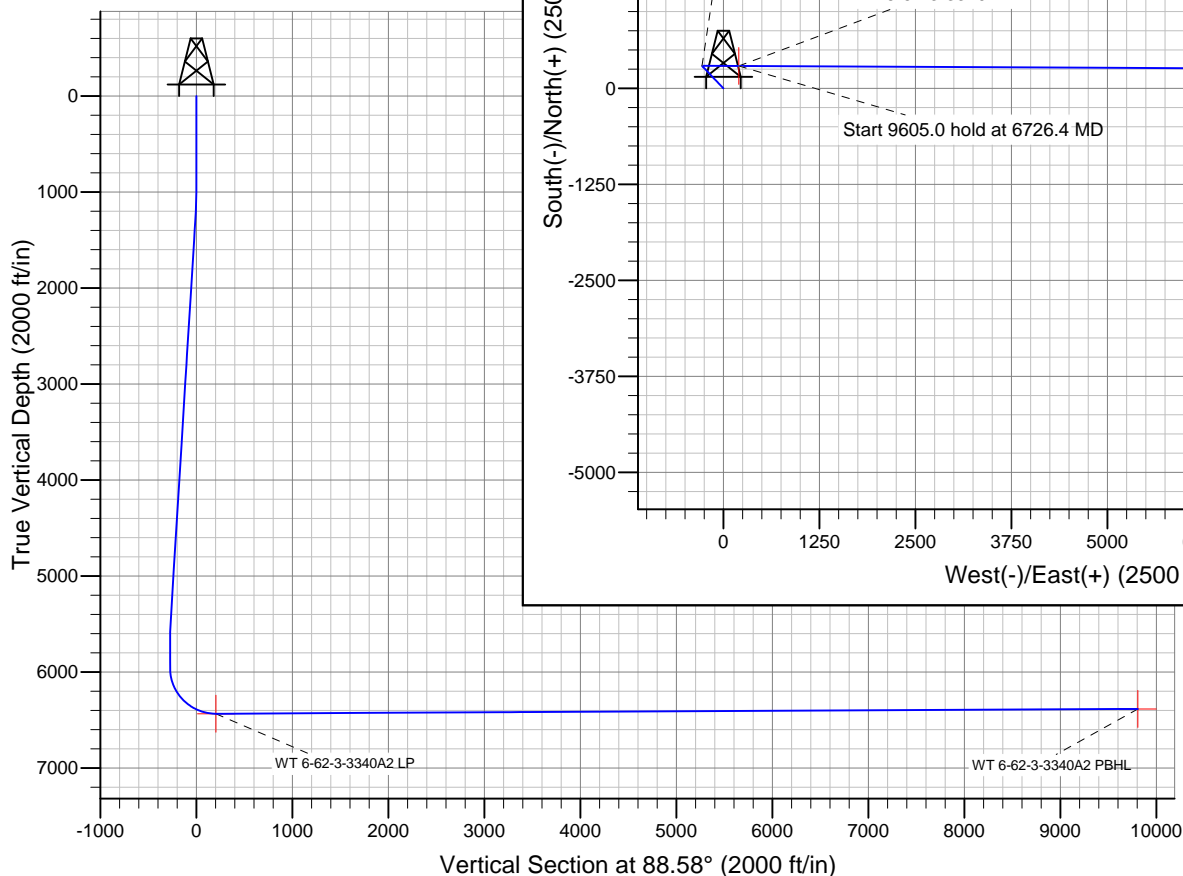
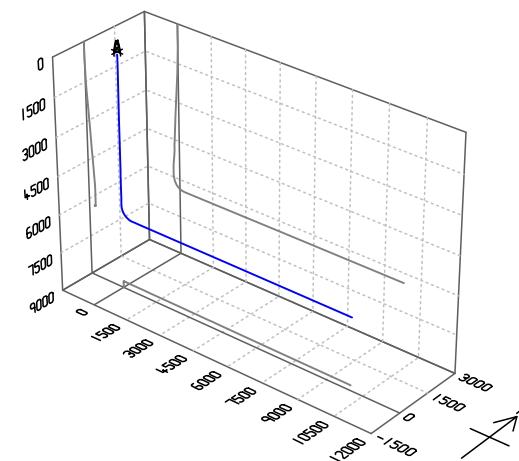
Name	TVD	+N/-S	+E/-W	Shape
WT 6-62-3-3340A2 PBHL	6383.0	243.1	9803.3	Point
WT 6-62-3-3340A2 LP	6433.0	293.6	198.5	Point

PROJECT DETAILS: WELD COUNTY, COLORADO

Geodetic System: US State Plane 1983
Datum: North American Datum 1983
Ellipsoid: GRS 1980
Zone: Colorado Northern Zone

SECTION DETAILS

Sec	MD	Inc	Azi	TVD	+N/-S	+E/-W	DLeg	TFace	VSec	Target
1	0.0	0.00	0.00	0.0	0.0	0.0	0.00	0.00	0.0	
2	1000.0	0.00	0.00	1000.0	0.0	0.0	0.00	0.00	0.0	
3	1262.7	5.25	316.46	1262.3	8.7	-8.3	2.00	316.46	-8.1	
4	5461.2	5.25	316.46	5443.2	287.4	-273.1	0.00	0.00	-265.9	
5	5723.9	0.00	90.30	5705.5	296.2	-281.4	2.00	180.00	-274.0	
6	5973.9	0.00	90.30	5955.5	296.2	-281.4	0.00	90.30	-274.0	
7	6726.4	90.30	90.30	6433.0	293.6	198.5	12.00	90.30	205.7	WT 6-62-3-3340A2 LP
8	16331.4	90.30	90.30	6383.0	243.1	9803.3	0.00	0.00	9806.3	WT 6-62-3-3340A2 PBHL



Azimuths to True North
Magnetic North: 8.15°

Magnetic Field
Strength: 52863.5snT
Dip Angle: 67.09°
Date: 12/31/2014
Model: IGRF2010