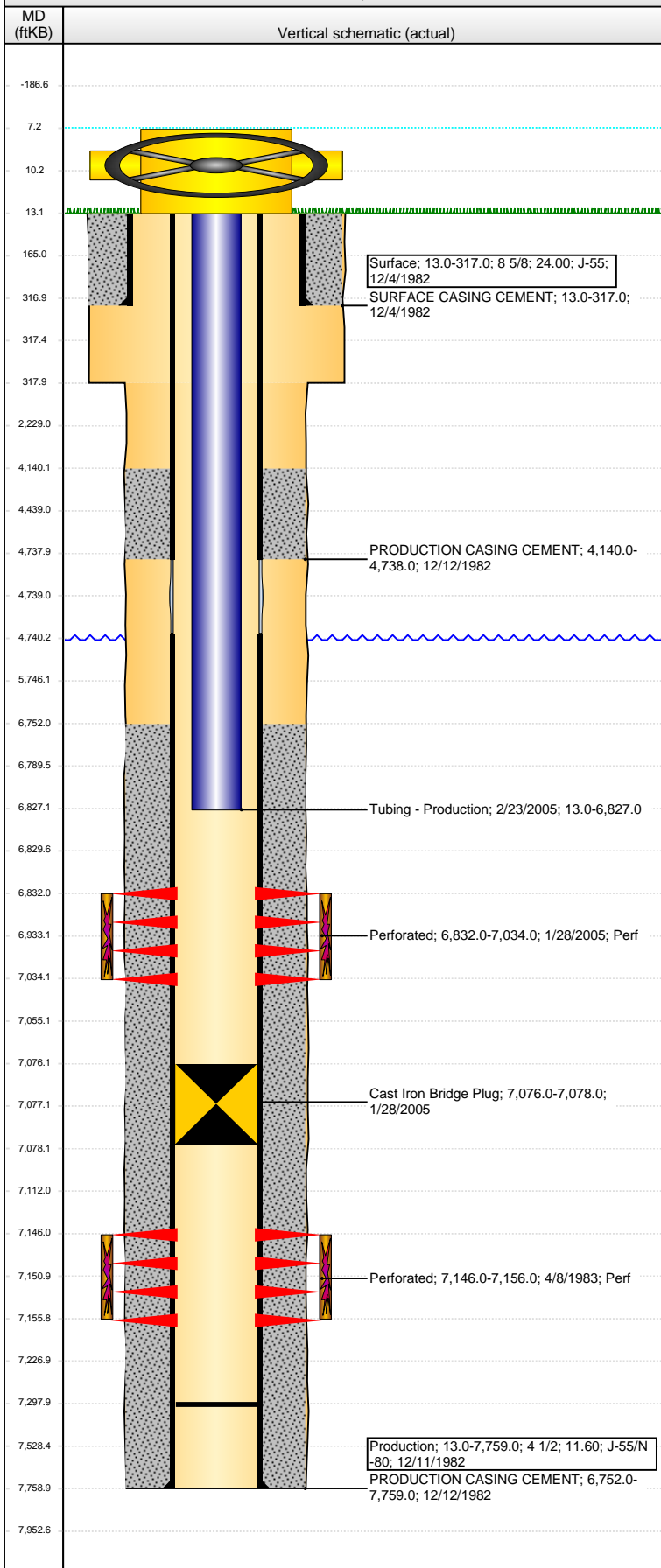


Well Name: BAILEY FEDERAL 18-01

VERTICAL - ORIGINAL HOLE, 3/16/2016 8:53:32 AM



Well Header

API 05-123-10934	Business Unit DJ BASIN	District 15	Well Config VERTICAL
Original KB Elevation (ft) 4,775	KB - GL / MSL (ftKB) 13.00	Spud Date 12/3/1982	P & A Date
Comment CEMENT STAGE COLLOAR @4738' & CIBP @7076'			
DISCREPANCY: DR RPT FROM 1982 HAS PROD CSG GRADE N-80; 1995 RPTS HAVE PROD CSG GRADE J-55			
Directions To Well			

Congressional Location

Quarter 1	Quarter 2	Quarter 3	Quarter 4	Section	Township	Twnshp N...	Range	Rng E/W Dir
		NW	NE	18	6	N	65	W

Bottom Hole Location

North-South Distance (ft)	From N or S Line	East-West Distance (ft)	From E or W Line

Plug Back Total Depths

Date	Depth (ftKB)	Method	Com
12/12/1982	7,510.0	TAG	GUIDE SHOE
1/28/2005	7,298.0	CASED HOLE LOG	DEPTH LOGGER

Wellbore Sections

Section Des	Size (in)	Act Top, MD (ftKB)	Act Btm, MD (ftKB)
SURFACE	12 1/4	13.0	318.0
PRODUCTION	8 5/8	318.0	7,759.0

Zone Statuses

Zone Name	Status Date	Status	Fluid Type	Job	Prod Method
NIOBRARA	2/9/2005	PR		RECOMPLETI...	
CODELL	4/23/1983	PR		DRILLING/CO...	
CODELL	1/28/2005	SI		RECOMPLETI...	

Casing Strings

Surface, 317.0ftKB

Casing Description	Run Date	OD (in)	Wt/Len (l...)	Grade	Top, MD (ft...)	MD (ftKB)
Surface	12/4/1982	8 5/8	24.00	J-55	13.0	317.0

Production, 7,759.0ftKB

Casing Description	Run Date	OD (in)	Wt/Len (l...)	Grade	Top, MD (ft...)	MD (ftKB)
Production	12/11/1982	4 1/2	11.60	J-55/N-80	13.0	7,759.0

Cement

Description	Top Depth (ftKB)	Bottom Depth (ftKB)
SURFACE CASING CEMENT	13.0	317.0
Description	Top Depth (ftKB)	Bottom Depth (ftKB)
PRODUCTION CASING CEMENT	4,140.0	4,738.0
Description	Top Depth (ftKB)	Bottom Depth (ftKB)
PRODUCTION CASING CEMENT	6,752.0	7,759.0

Tubing Strings

Tubing Description	Run Date	String...	ID (in)	Wt (lb/ft)	Grade	Len (ft)	Set De...
Tubing - Production	2/23/2005	2 3/8	1.995	4.70	J-55	6,814.00	

Tubing Components

Item Des	OD (in)	Wt (lb/ft)	Grade	Jts	Len (ft)	Btm (ftKB)	Btm (TVD) (ftKB)
EUE 8rd Tubing	2 3/8	4.70	J-55	211	6,814.00	6,827.0	

Perforation Data

Zone	Bnch/St g	Entered Shot Total	Top (ftKB)	Btm (ftKB)	Date
NIOBRARA, ORIGINAL HOLE		312	6,832.00	7,034.00	1/28/2005
CODELL, ORIGINAL HOLE		20	7,146.00	7,156.00	4/8/1983

Stimulations & Treatments

Date	Zone	Primary Job Type
4/9/1983	CODELL, ORIGINAL HOLE	DRILLING/COMPLETION - ORIGINAL
Technical Result		Tech Result Details
		Tech Result Note

Comment

Date	Zone	Primary Job Type
2/7/2005	NIOBRARA, ORIGINAL HOLE	RECOMPLETION
Technical Result		Tech Result Details
		Tech Result Note

Comment

Well Name: BAILEY FEDERAL 18-01

VERTICAL - ORIGINAL HOLE, 3/16/2016 8:53:34 AM

Other In Hole

Run Date	Des	OD (in)	Top (ftKB)	Btm (ftKB)
1/28/2005	Cast Iron Bridge Plug	3.99	7,076.0	7,078.0

Logs

Date	Type	Top, MD (ftKB)	Btm, MD (ftKB)
12/11/1982	GAMMA RAY	6,750.0	7,757.0
12/11/1982	INDUCTION	330.0	7,754.0
1/28/2005	CBL/CCL/GR	4,600.0	7,295.0
11/21/2014	GYRO	10.0	6,800.0

