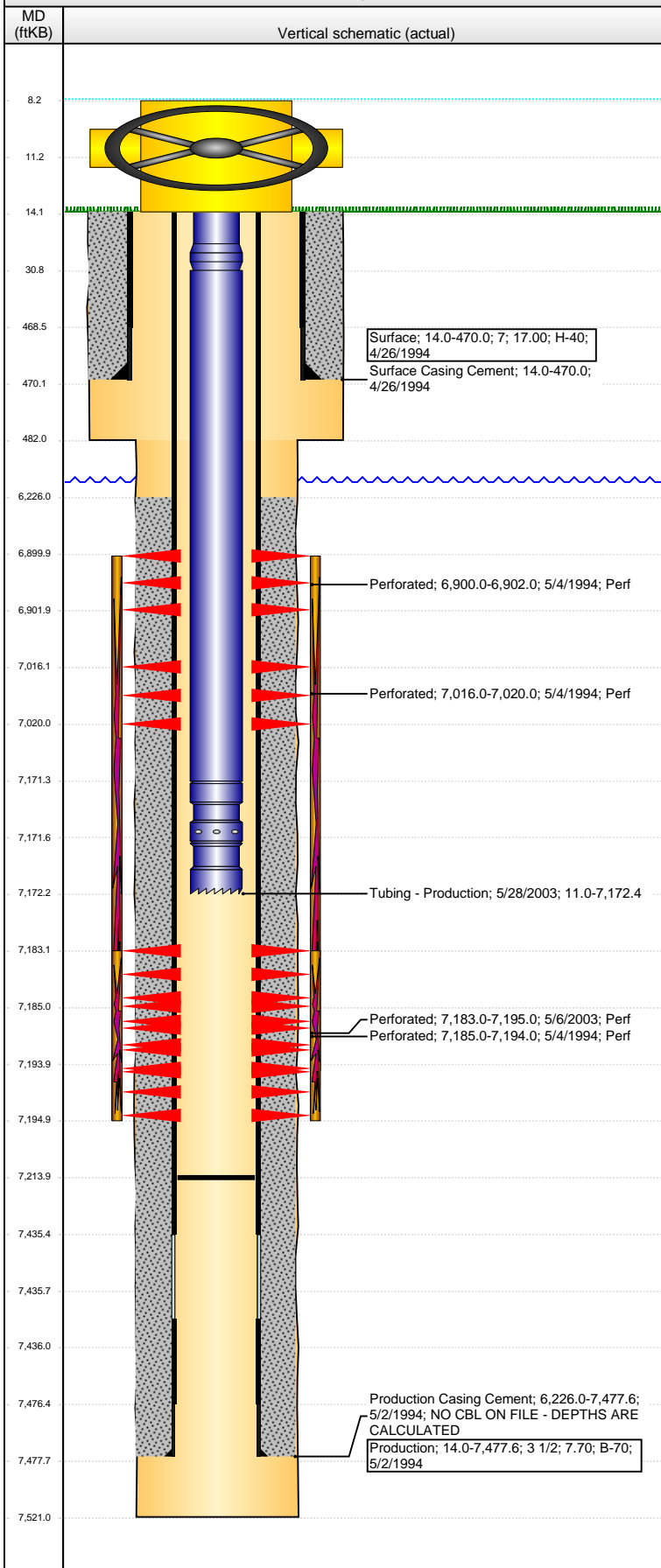


Well Name: OTTOSON 12-14G6

VERTICAL - ORIGINAL HOLE, 3/14/2016 3:21:00 PM



Well Header									
API 05-123-18233		Business Unit DJ BASIN		District 15		Well Config VERTICAL			
Original KB Elevation (ft) 4,787		KB - GL / MSL (ftKB) 14.00		Spud Date 4/25/1994		P & A Date			
Comment NO CBL ON FILE									
Directions To Well									
Congressional Location									
Quarter 1	Quarter 2	Quarter 3 SE	Quarter 4 SW	Section 12	Township 6 N	Twnshp N...	Range 66	Rng E/W Dir W	
Bottom Hole Location									
North-South Distance (ft)		From N or S Line		East-West Distance (ft)		From E or W Line			
Plug Back Total Depths									
Date	Depth (ftKB)	Method			Com				
5/2/1994	7,435.4	TAG			LATCH DOWN BAFFLE PLATE				
5/4/1994	7,414.0	TAG			WIRELINE TAG				
5/5/2003	7,265.0	TAG			CLEAN OUT				
5/28/2003	7,214.0	TAG			CLEAN OUT				
Wellbore Sections									
Section Des			Size (in)		Act Top, MD (ftKB)		Act Btm, MD (ftKB)		
SURFACE			9 7/8		14.0		482.0		
PRODUCTION			6 1/4		482.0		7,521.0		
Zone Statuses									
Zone Name	Status Date	Status	Fluid Type	Job	Prod Method				
CODELL	5/6/1994	PR		DRILLING/CO...					
CODELL	5/20/2003	PR		RE-FRAC, 5/16...					
NIOBRARA	5/6/1994	PR		DRILLING/CO...					
Casing Strings									
Surface, 470.0ftKB									
Casing Description Surface		Run Date 4/26/1994	OD (in) 7	Wt/Len (l... 17.00	Grade H-40	Top, MD (ft... 14.0	MD (ftKB) 470.0		
Production, 7,477.6ftKB									
Casing Description Production		Run Date 5/2/1994	OD (in) 3 1/2	Wt/Len (l... 7.70	Grade B-70	Top, MD (ft... 14.0	MD (ftKB) 7,477.6		
Cement									
Description Surface Casing Cement					Top Depth (ftKB) 14.0		Bottom Depth (ftKB) 470.0		
Description Production Casing Cement					Top Depth (ftKB) 6,226.0		Bottom Depth (ftKB) 7,477.6		
Tubing Strings									
Tubing Description Tubing - Production		Run Date 5/28/2003	String... 2 1/16	ID (in) 1.751	Wt (lb/ft) 3.25	Grade J-55	Len (ft) 7,161.36	Set De...	
Tubing Components									
Item Des	OD (in)	Wt (lb/ft)	Grade	Jts	Len (ft)	Btm (ftKB)	Btm (TVD) (ftKB)		
Pup Joint	2 1/16		J-55	2	20.00	31.0			
Tubing	2 1/16	3.25	J-55	209	7,140.26	7,171.3			
Pump Seating Nipple	2 1/16				0.40	7,171.7			
Notched collar	2 1/16				0.70	7,172.4			
Perforation Data									
Zone	Bnch/St g	Entered Shot Total	Top (ftKB)		Btm (ftKB)		Date		
NIOBRARA, ORIGINAL HOLE	A	2	6,900.00		6,902.00		5/4/1994		
NIOBRARA, ORIGINAL HOLE	B	4	7,016.00		7,020.00		5/4/1994		
CODELL, ORIGINAL HOLE		48	7,183.00		7,195.00		5/6/2003		
CODELL, ORIGINAL HOLE		9	7,185.00		7,194.00		5/4/1994		

Well Name: OTTOSON 12-14G6

VERTICAL - ORIGINAL HOLE, 3/14/2016 3:21:02 PM

Stimulations & Treatments

Date 5/6/1994	Zone NIOBRARA-CODELL, ORIGINAL HOLE	Primary Job Type DRILLING/COMPLETION - ORIGINAL
------------------	--	--

Technical Result	Tech Result Details	Tech Result Note
------------------	---------------------	------------------

Comment
LIMITED ENTRY

Date 5/16/2003	Zone CODELL, ORIGINAL HOLE	Primary Job Type RE-FRAC
-------------------	-------------------------------	-----------------------------

Technical Result	Tech Result Details	Tech Result Note
------------------	---------------------	------------------

Comment

Other In Hole

Run Date	Des	OD (in)	Top (ftKB)	Btm (ftKB)

Logs

Date	Type	Top, MD (ftKB)	Btm, MD (ftKB)
5/1/1994	INDUCTION	471.0	7,519.0
5/4/1994	GAMMA RAY	6,655.0	7,412.0
1/23/2015	GYRO	10.0	7,100.0

