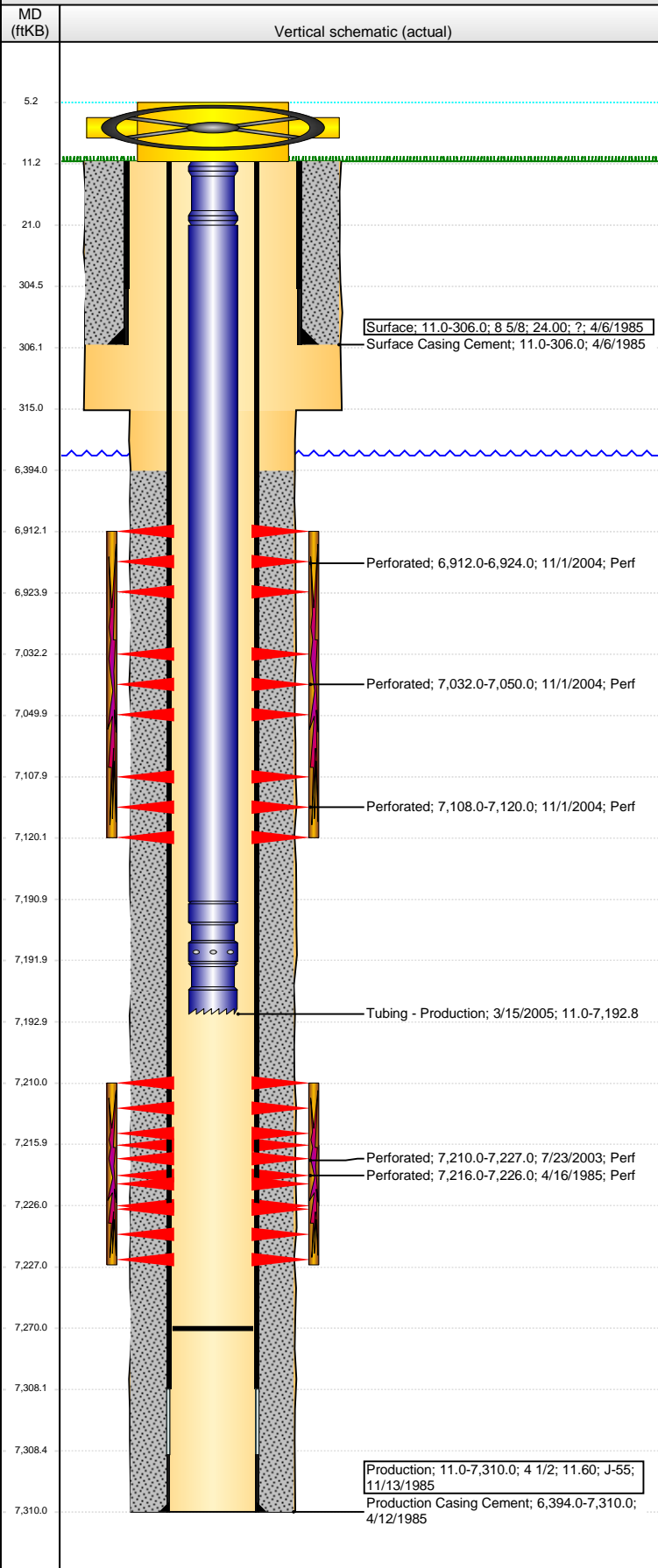


Well Name: OTTOSON 03

VERTICAL - ORIGINAL HOLE, 3/14/2016 2:36:11 PM



Well Header

API	Business Unit	District	Well Config
05-123-12390	DJ BASIN	15	VERTICAL
Original KB Elevation (ft)	KB - GL / MSL (ftKB)	Spud Date	P & A Date
4,805	11.00	4/6/1985	

Comment

SURF HOLE DEPTH DISCREPANCY; DRL RPTS = 306', ST RPT = 305'. TD DISCREPANCY: DRL RPTS = 7300, OPEN HOLE LOGS, ST RPT = 7310 - PROD CSG SET @ 7310'.

WELL FILE DATA SPARSE & SKETCHY

Directions To Well

Congressional Location

Quarter 1	Quarter 2	Quarter 3	Quarter 4	Section	Township	Twship N...	Range	Rng E/W Dir
		SW	SW	12	6	N	66	W

Bottom Hole Location

North-South Distance (ft)	From N or S Line	East-West Distance (ft)	From E or W Line

Plug Back Total Depths

Date	Depth (ftKB)	Method	Com
4/15/1985	7,273.0	CASED HOLE LOG	DEPTH LOGGER FROM CBL
10/20/1990	7,209.0	TAG	CLEAN OUT
7/30/2003	7,256.0	TAG	CLEAN OUT
3/15/2005	7,270.0	TAG	DRILL CBP TO 7270'

Wellbore Sections

Section Des	Size (in)	Act Top, MD (ftKB)	Act Btm, MD (ftKB)
SURFACE	12 1/4	11.0	315.0
PRODUCTION	7 7/8	315.0	7,310.0

Zone Statuses

Zone Name	Status Date	Status	Fluid Type	Job	Prod Method
CODELL	5/22/1985	PR		DRILLING/CO...	
CODELL	9/2/2003	PR		RE-FRAC, 7/28...	
NIOBRARA	11/17/2004	PR		RECOMPLETI...	

Casing Strings

Surface, 306.0ftKB

Casing Description	Run Date	OD (in)	Wt/Len (l...)	Grade	Top, MD (ft...)	MD (ftKB)
Surface	4/6/1985	8 5/8	24.00	?	11.0	306.0

Production, 7,310.0ftKB

Casing Description	Run Date	OD (in)	Wt/Len (l...)	Grade	Top, MD (ft...)	MD (ftKB)
Production	11/13/1985	4 1/2	11.60	J-55	11.0	7,310.0

Cement

Description	Top Depth (ftKB)	Bottom Depth (ftKB)
Surface Casing Cement	11.0	306.0
Description	Top Depth (ftKB)	Bottom Depth (ftKB)
Production Casing Cement	6,394.0	7,310.0

Tubing Strings

Tubing Description	Run Date	String...	ID (in)	Wt (lb/ft)	Grade	Len (ft)	Set De...
Tubing - Production	3/15/2005	2 3/8	1.995	4.70	J-55	7,181.76	

Tubing Components

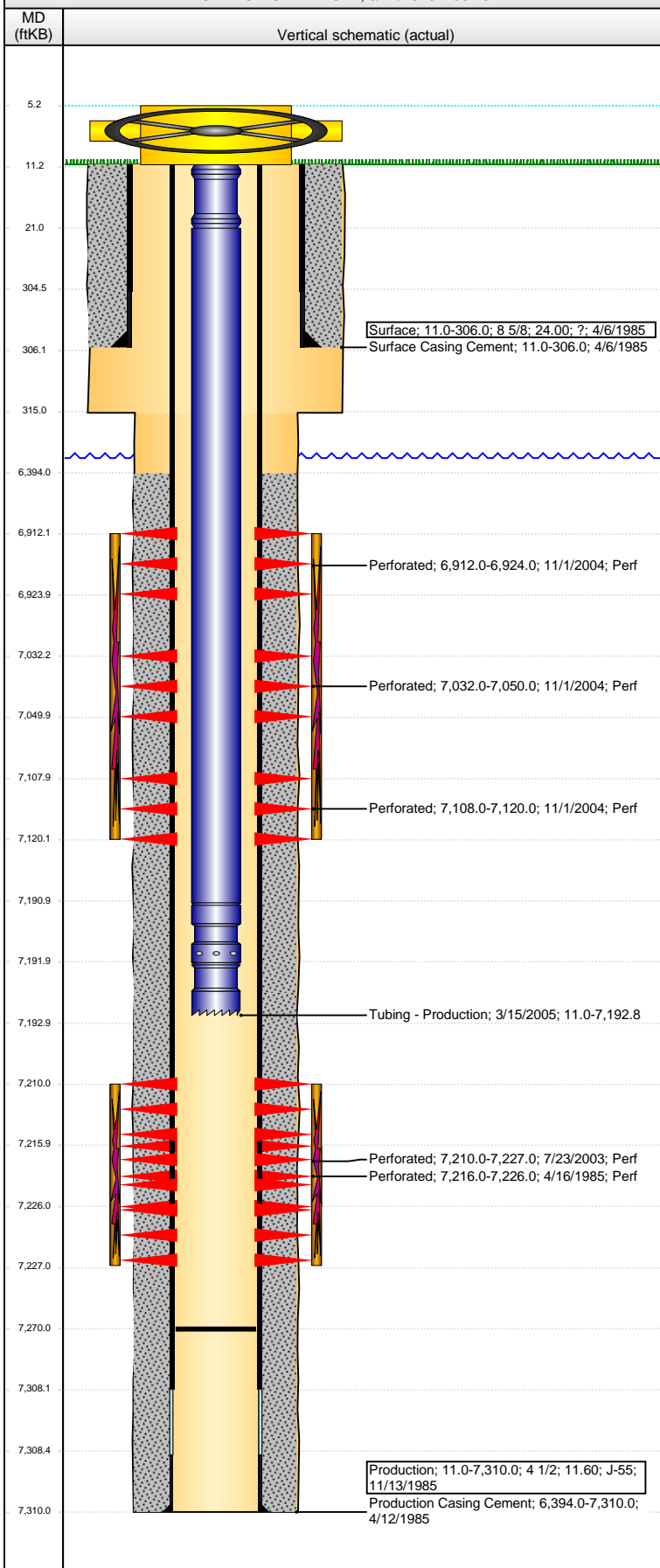
Item Des	OD (in)	Wt (lb/ft)	Grade	Jts	Len (ft)	Btm (ftKB)	Btm (TVD) (ftKB)
Pup Joint	2 3/8	4.70	J-55	1	10.00	21.0	
EUE 8rd Tubing	2 3/8	4.70	J-55	220	7,169.96	7,191.0	
Pump Seating Nipple	2 3/8	1.10			1.00	7,192.0	
Notched collar	2 3/8				0.80	7,192.8	

Perforation Data

Zone	Bnch/St g	Entered Shot Total	Top (ftKB)	Btm (ftKB)	Date
NIOBRARA, ORIGINAL HOLE	A	72	6,912.00	6,924.00	11/1/2004
NIOBRARA, ORIGINAL HOLE	B	108	7,032.00	7,050.00	11/1/2004
NIOBRARA, ORIGINAL HOLE	C	72	7,108.00	7,120.00	11/1/2004
CODELL, ORIGINAL HOLE		58	7,210.00	7,227.00	7/23/2003
CODELL, ORIGINAL HOLE		30	7,216.00	7,226.00	4/16/1985

Well Name: OTTOSON 03

VERTICAL - ORIGINAL HOLE, 3/14/2016 2:36:13 PM



Stimulations & Treatments

Date	Zone	Primary Job Type
4/18/1985	CODELL, ORIGINAL HOLE	DRILLING/COMPLETION - ORIGINAL
Technical Result	Tech Result Details	Tech Result Note
Comment		
Date	Zone	Primary Job Type
7/28/2003	CODELL, ORIGINAL HOLE	RE-FRAC
Technical Result	Tech Result Details	Tech Result Note
Comment		
Date	Zone	Primary Job Type
11/8/2004	NIOBRARA, ORIGINAL HOLE	RECOMPLETION
Technical Result	Tech Result Details	Tech Result Note
Failure	Pressured Out	
Comment	TREATMENT ABORTED	
Date	Zone	Primary Job Type
11/15/2004	NIOBRARA, ORIGINAL HOLE	RECOMPLETION
Technical Result	Tech Result Details	Tech Result Note
Comment		

Other In Hole

Run Date	Des	OD (in)	Top (ftKB)	Btm (ftKB)

Logs

Date	Type	Top, MD (ftKB)	Btm, MD (ftKB)
4/12/1985	COMPENSATED DENSITY	6,850.0	7,307.0
4/12/1985	INDUCTION	307.0	7,304.0
4/15/1985	CEMENT BOND	6,275.0	7,267.0
10/15/2014	GYRO	10.0	7,100.0