

RADIAL CEMENT BOND
GAMMA RAY
CCL

Company		ANADARKO PETROLEUM CORPORATION	
Well	DAVIS 13-15		
Field	WATTENBERG		
County	WELD	State	CO
Location:		APL # : 05-123-21703	
SHL: 465' FSL & 500' FWL SW/SW		Other Services	
LAT: 40.21900 & LONG: -104.88420			
Permanent Datum	GL	Elevation	4795'
Log Measured From	KB 12'		
Drilling Measured From	KB		
SEC 15 TWP 3N RGE 67W			
Date	2-16-2016		
Run Number	ONE		
Depth Driller	7240'		
Depth Logger	4019'		
Bottom Logged Interval	4010'		
Top Log Interval	SURFACE		
Open Hole Size	7.875		
Type Fluid	WATER		
Density / Viscosity	1.0		
Max. Recorded Temp.	128 DEG F		
Estimated Cement Top	446'		
Time Well Ready	N/A		
Time Logger on Bottom	N/A		
Equipment Number	4310		
Location	GREELEY		
Recorded By	N. BREHMER		
Witnessed By	L. MORALES		
Borehole Record			
Run Number	Bit	From	To
		Size	Weight
		From	To
Casing Record	Size	Wgt/Ft	Top
Surface String	8.63	24#	SURFACE
Prot. String			
Production String	4.5	11.6#	SURFACE
Liner			

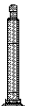
<<< Fold Here >>>

All interpretations are opinions based on inferences from electrical or other measurements and we cannot and do not guarantee the accuracy or correctness of any interpretation, and we shall not, except in the case of gross or willful negligence on our part, be liable or responsible for any loss, costs, damages, or expenses incurred or sustained by anyone resulting from any interpretation made by any of our officers, agents or employees. These interpretations are also subject to our general terms and conditions set out in our current Price Schedule.

Comments

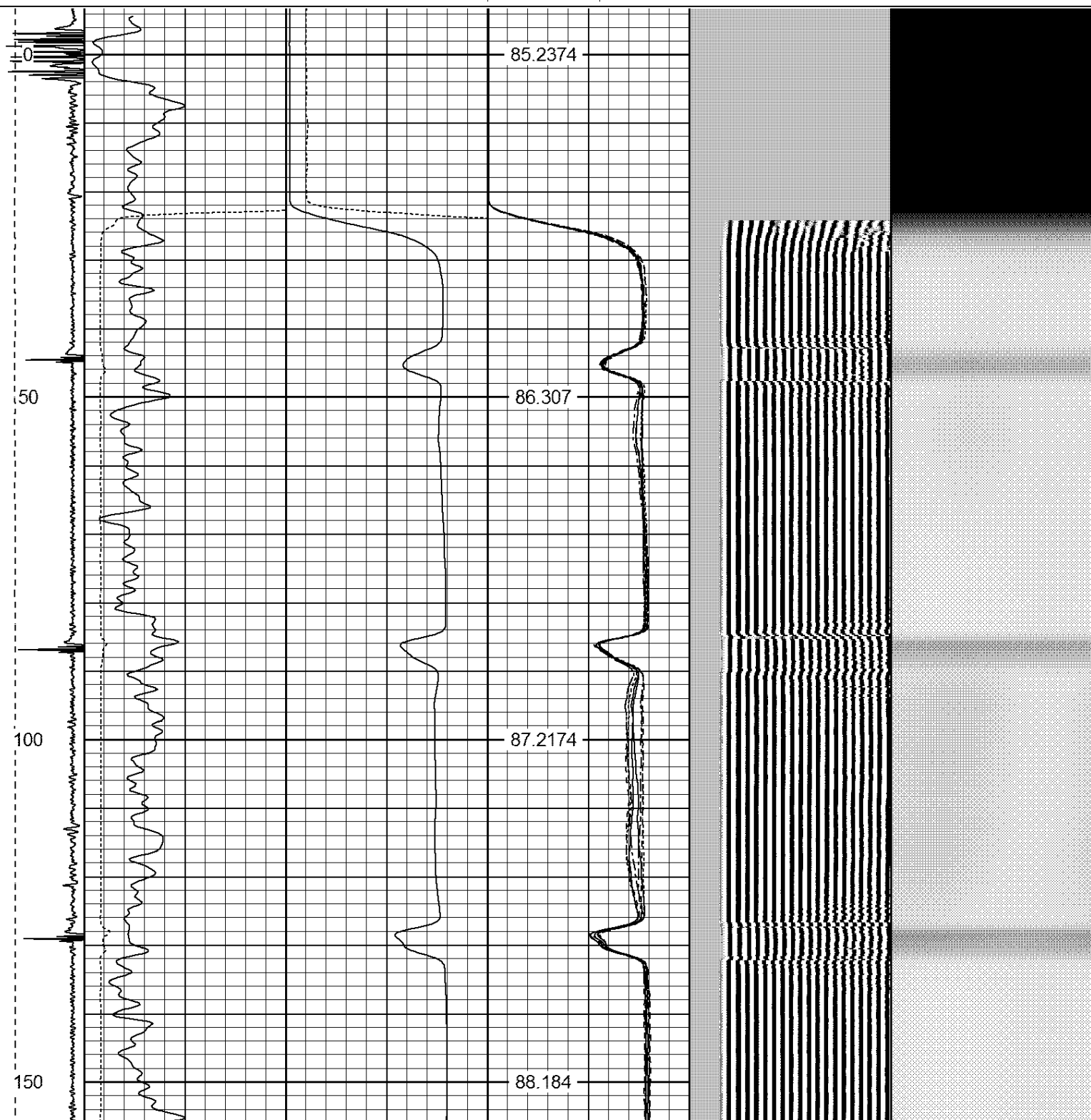
RAN CBL TO VERIFY CEMENT BOND
HOLE WAS LOADED THE NIGHT BEFORE LOGGING
CORRELATED UP HOLE 4' TO ASAP CBL 11-7-03
CALIBRATED FREE PIPE @2770', 81mA IN 4.5"

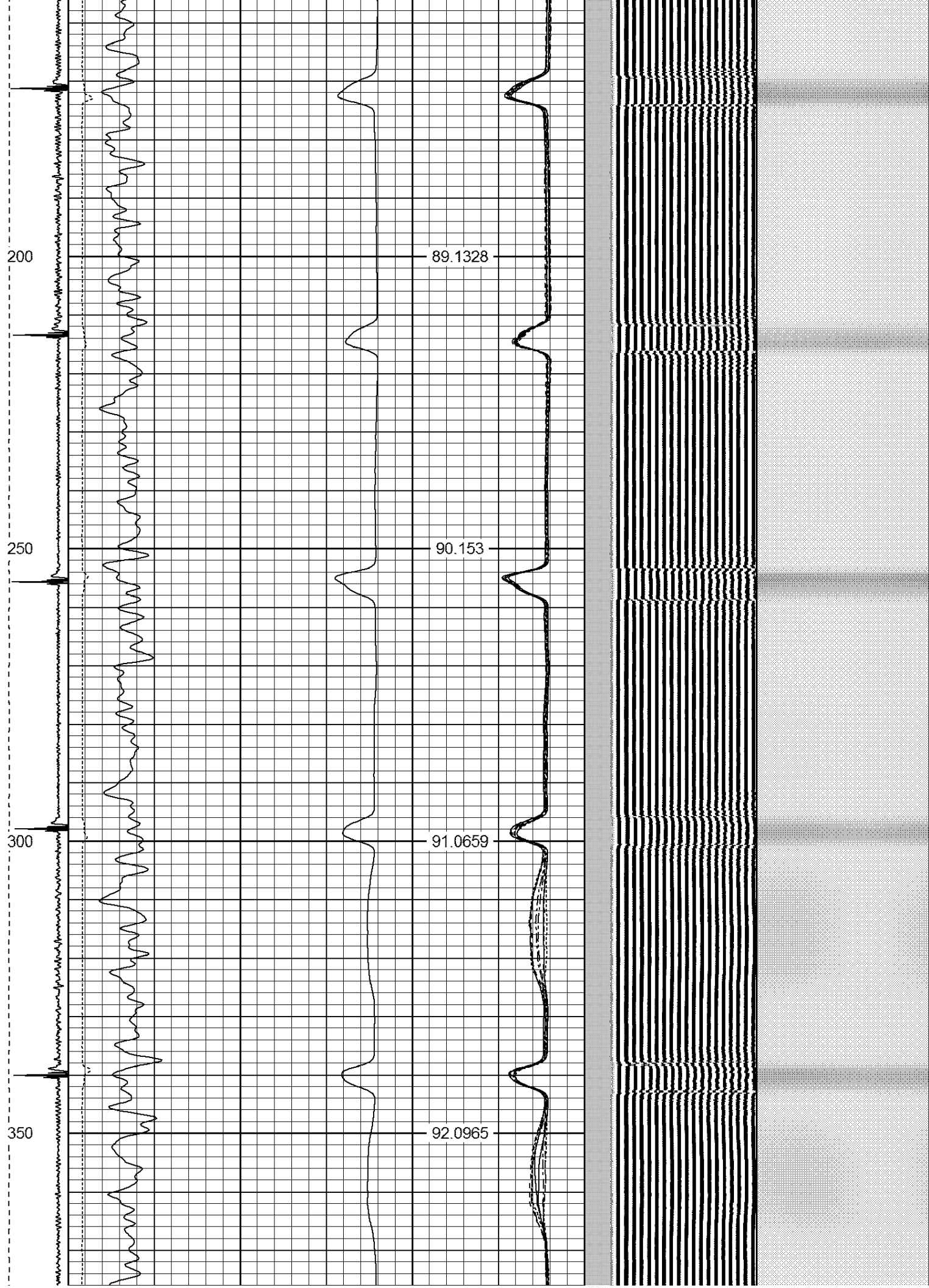
THANK YOU FOR USING IPS !!!!!!!

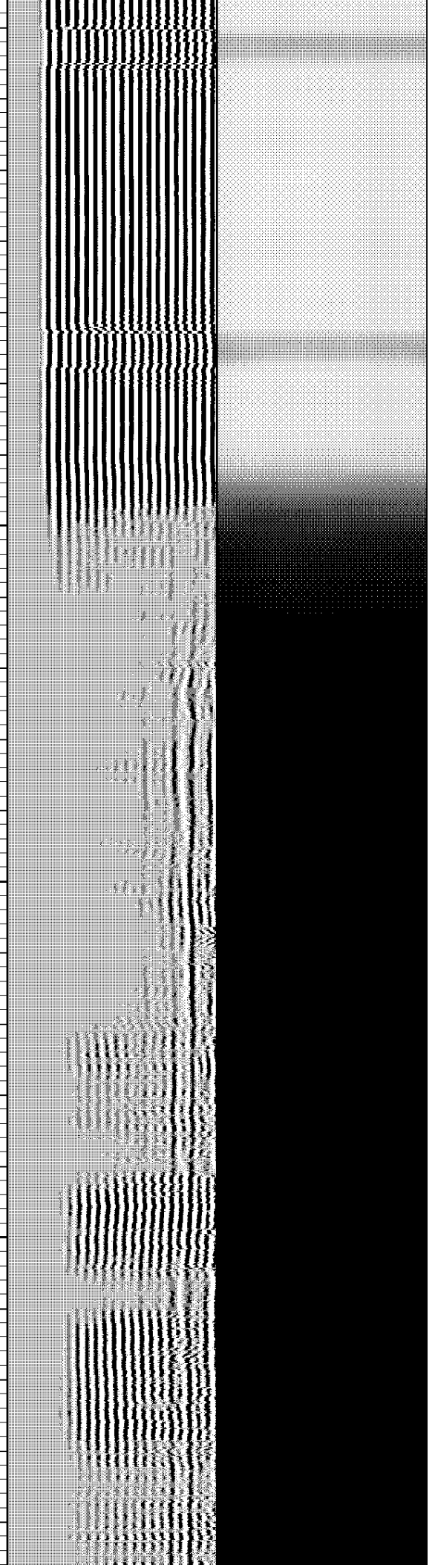
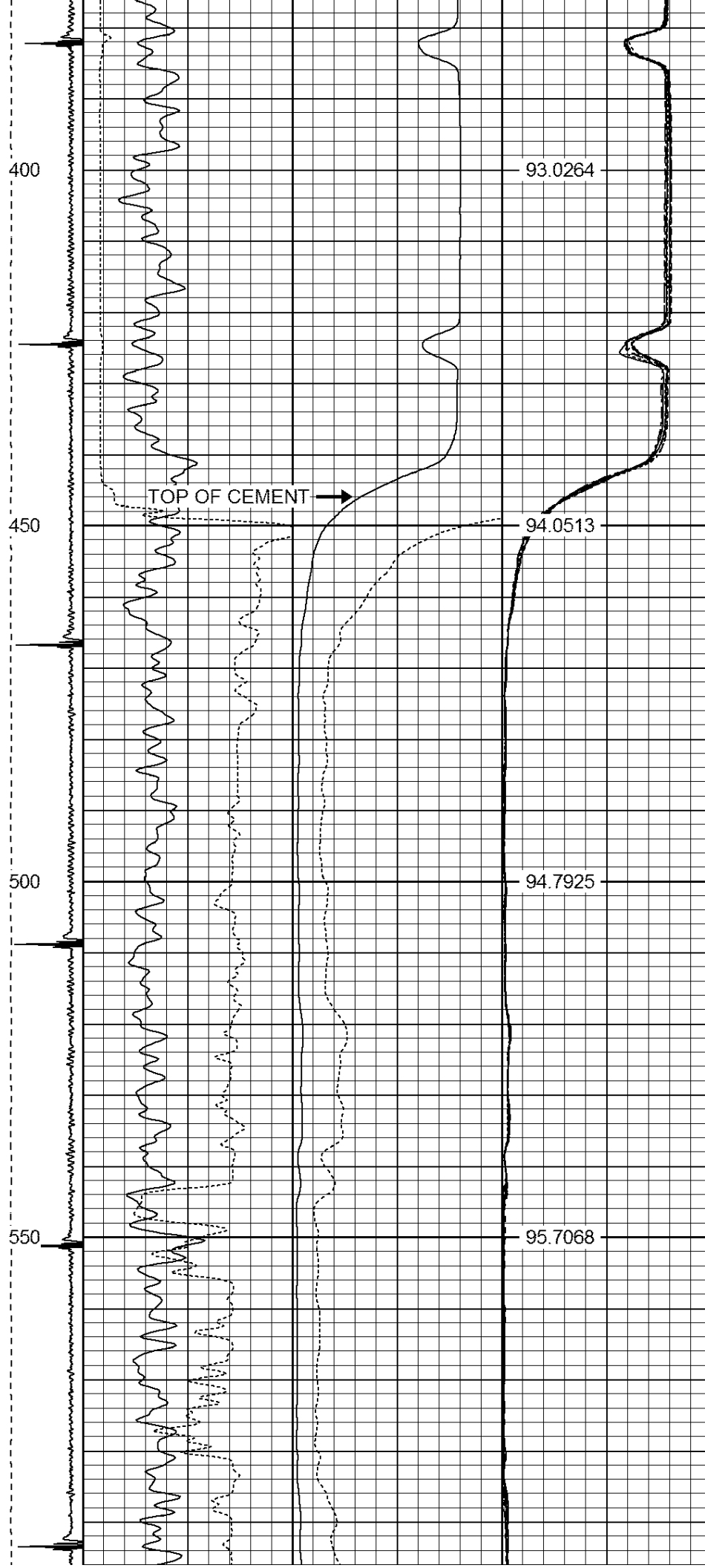
Sensor	Offset (ft)	Schematic	Description	Len (ft)	OD (in)	Wt (lb)
			1_4	1.00	1.36	5.00

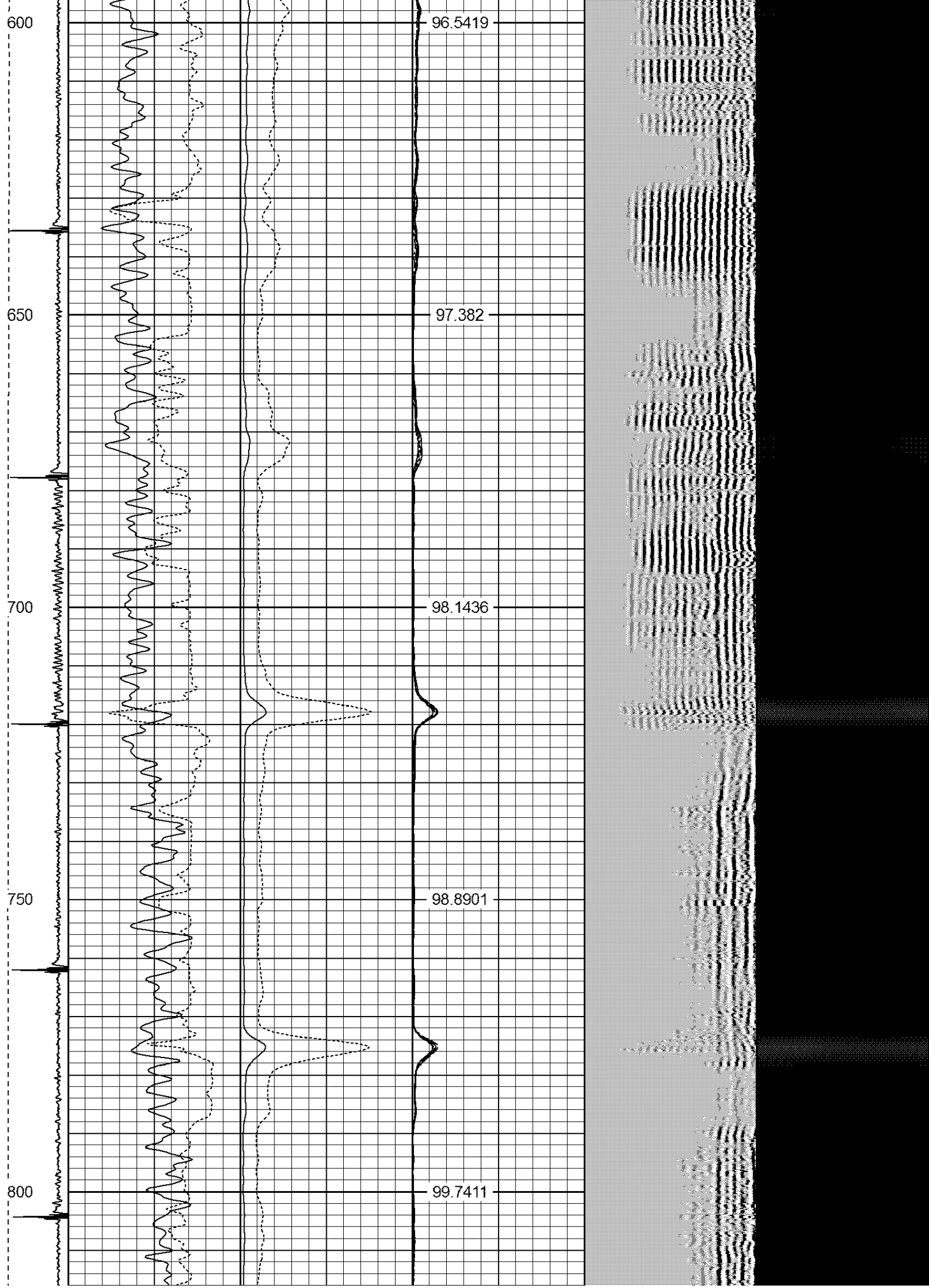
			PTS275	2.83	2.75	
HEADVOLT	16.13					
IntTemp	14.71					
WVF3FT	11.46		RBT-Probe (Base)	8.92	2.75	90.00
WVFCAL	11.46		Probe Radii Bond Tool with Digital Telemetry			
WVFS1	11.46					
WVFS2	11.46					
WVFS3	11.46					
WVFS4	11.46					
WVFS5	11.46					
WVFS6	11.46					
WVFS7	11.46					
WVFS8	11.46					
WVF5FT	10.46					
CNLSC	6.00		CNT-Probe_B (275)	2.88	2.75	40.00
CNSSC	5.17		6 bow centralizer			
CCL	3.64					
			GR-Probe (275)	4.33	2.75	30.00
			Probe 2.75"			
GR	0.90					
Dataset: davis 13-15.db: field/well/run1/pass3 Total Length: 19.96 ft Total Weight: 165.00 lb O.D. 2.75 in						

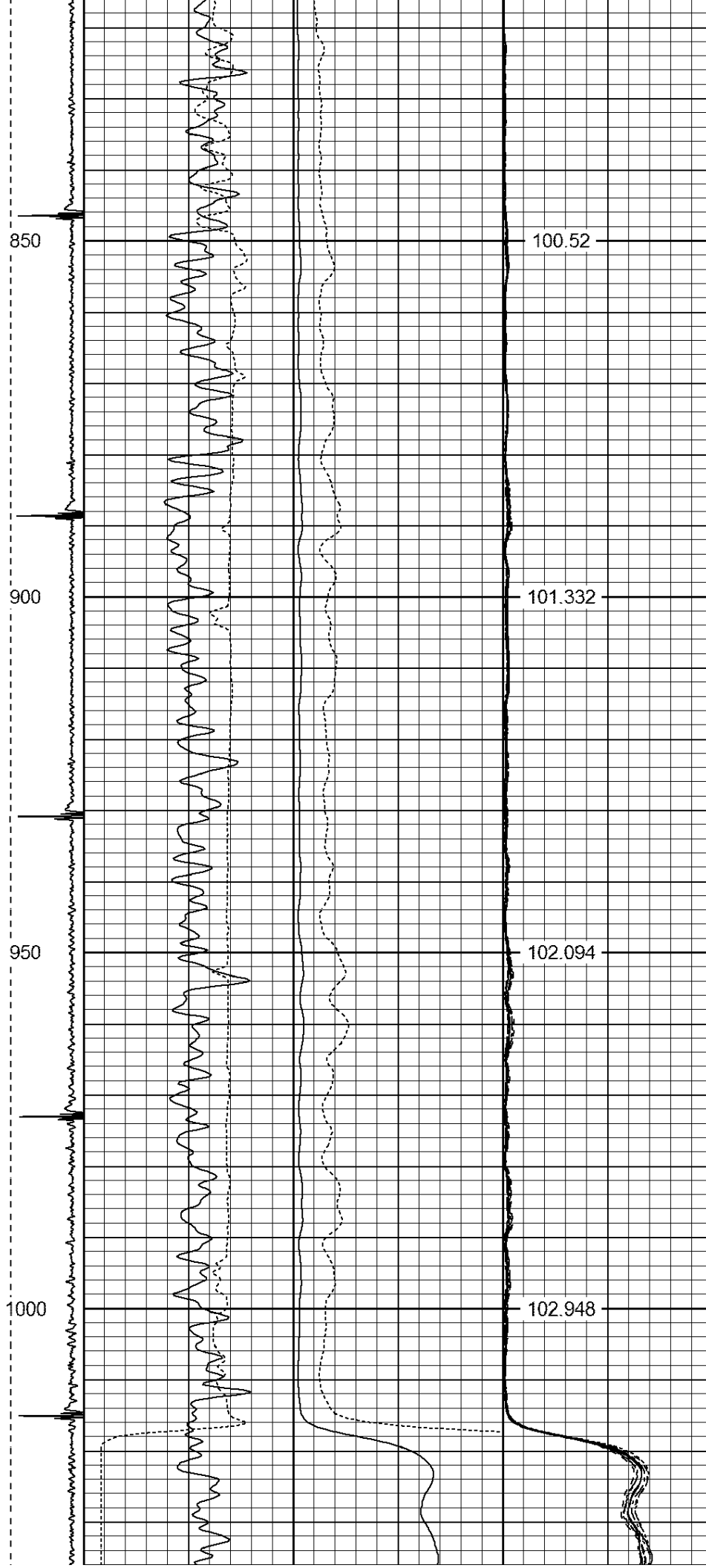
-9	CCL	1	200	TT (usec)	1000	0	AMP (mV)	100	0	AMPS1	100	200	VDL	1200	1	Cement Map	8
LSPD			0	GR (GAPI)	200	0	AMPx5 (mV)	20	0	AMPS2	100				100		1
(ft/min)			200	GR (GAPI)	400				0	AMPS3	100						
0	250								0	AMPS4	100						
									0	AMPS5	100						
									0	AMPS6	100						
									0	AMPS7	100						
									0	AMPS8	100						
										IntTemp							
										(degF)							

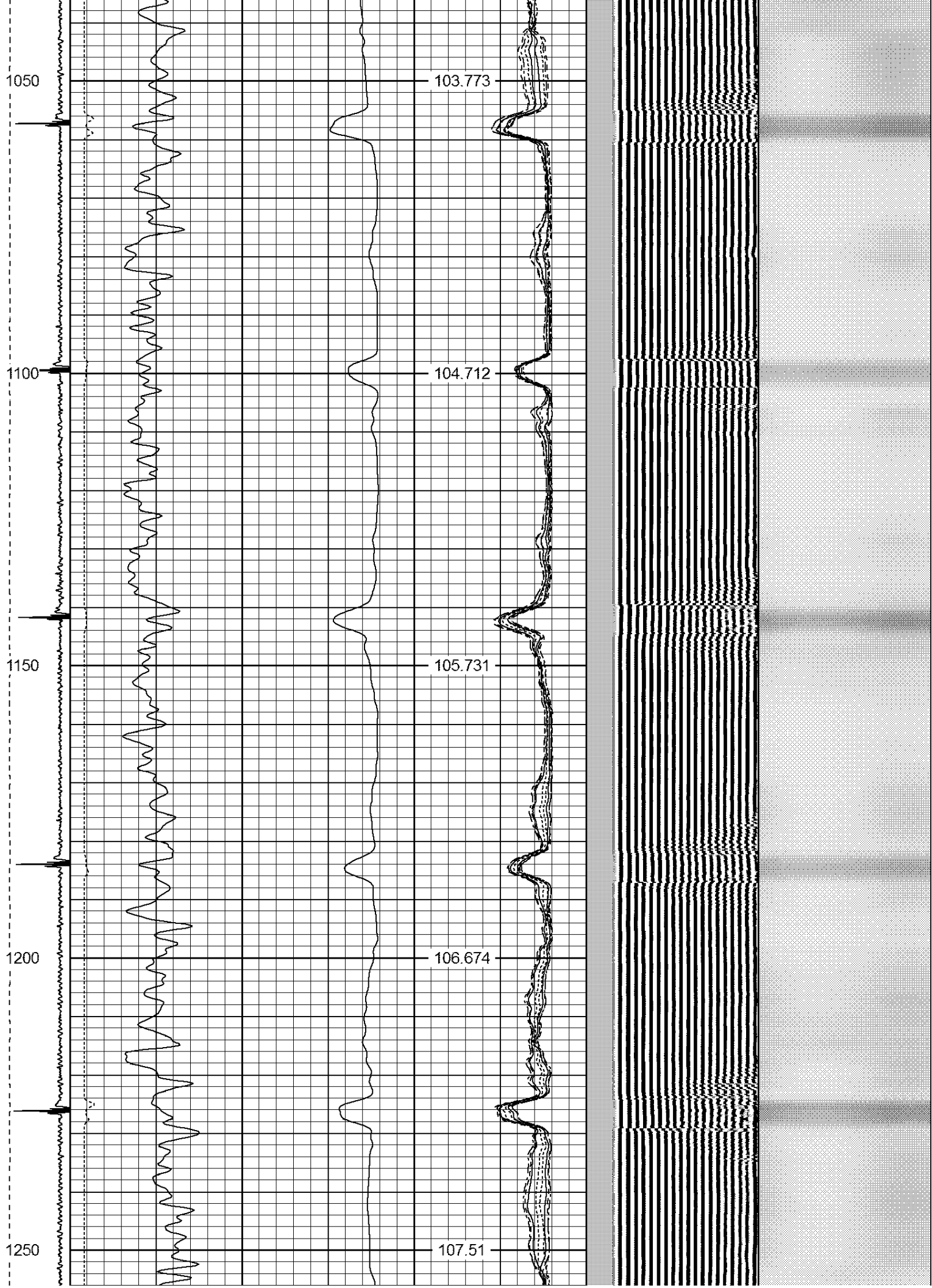


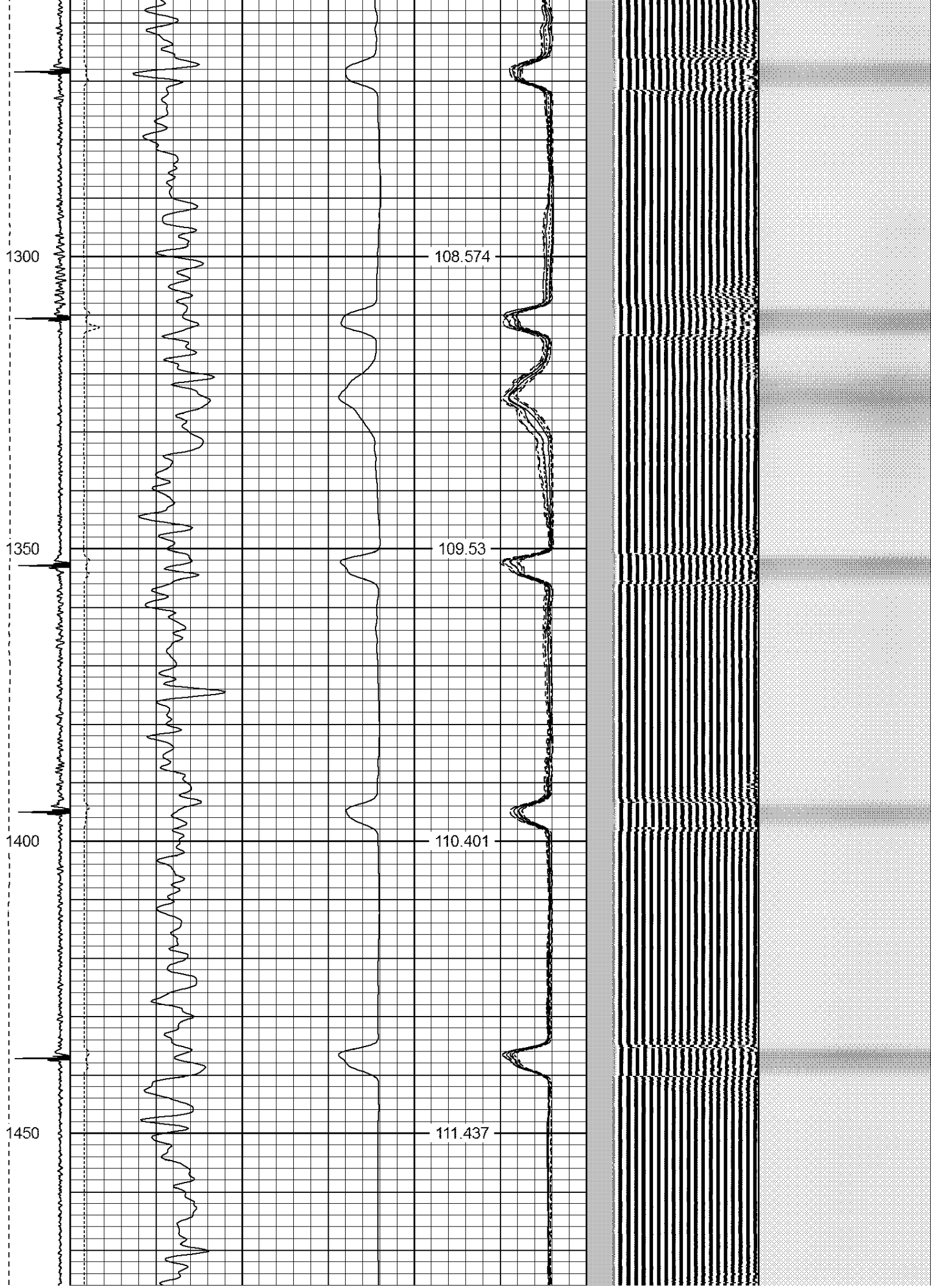


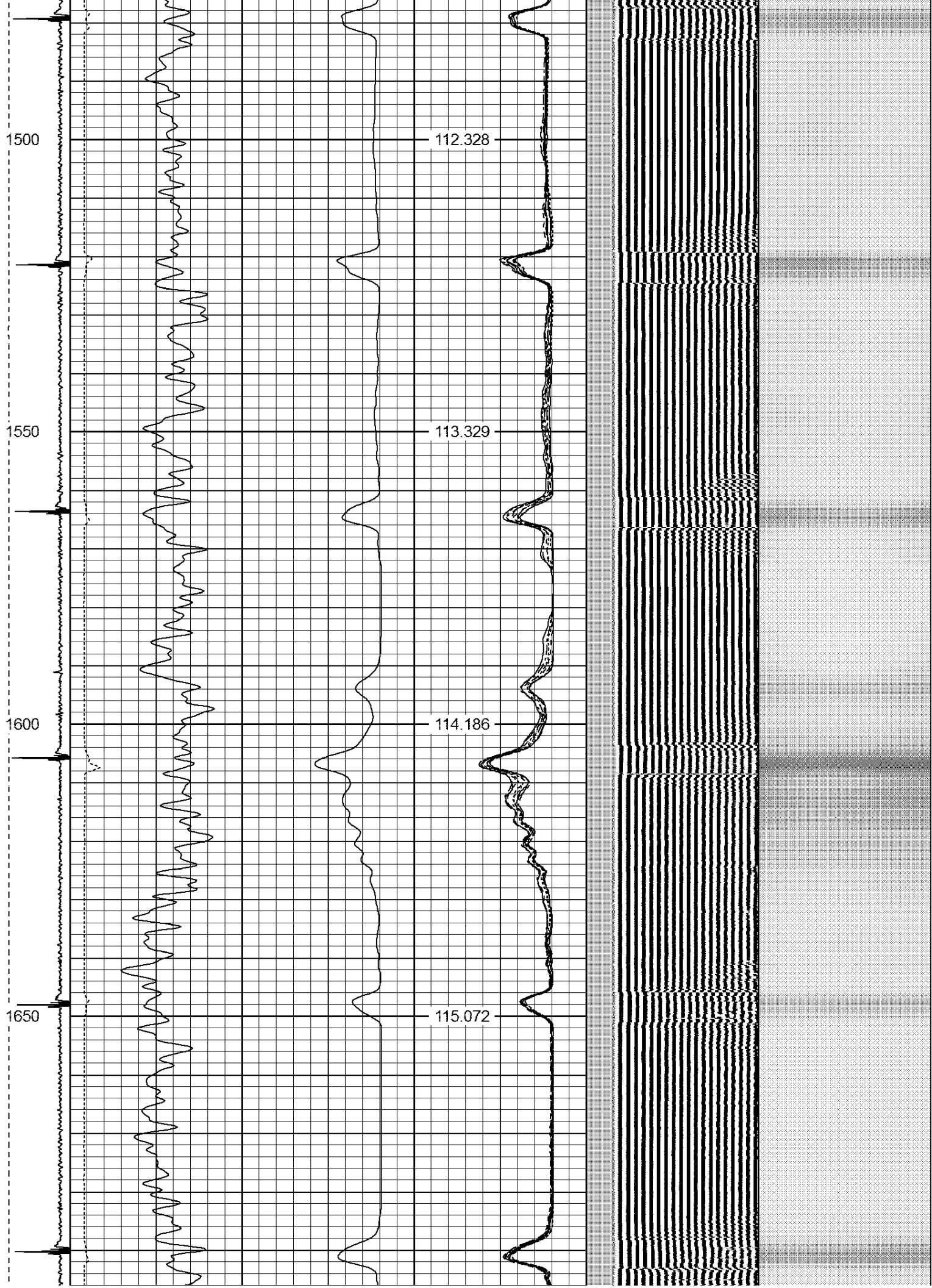


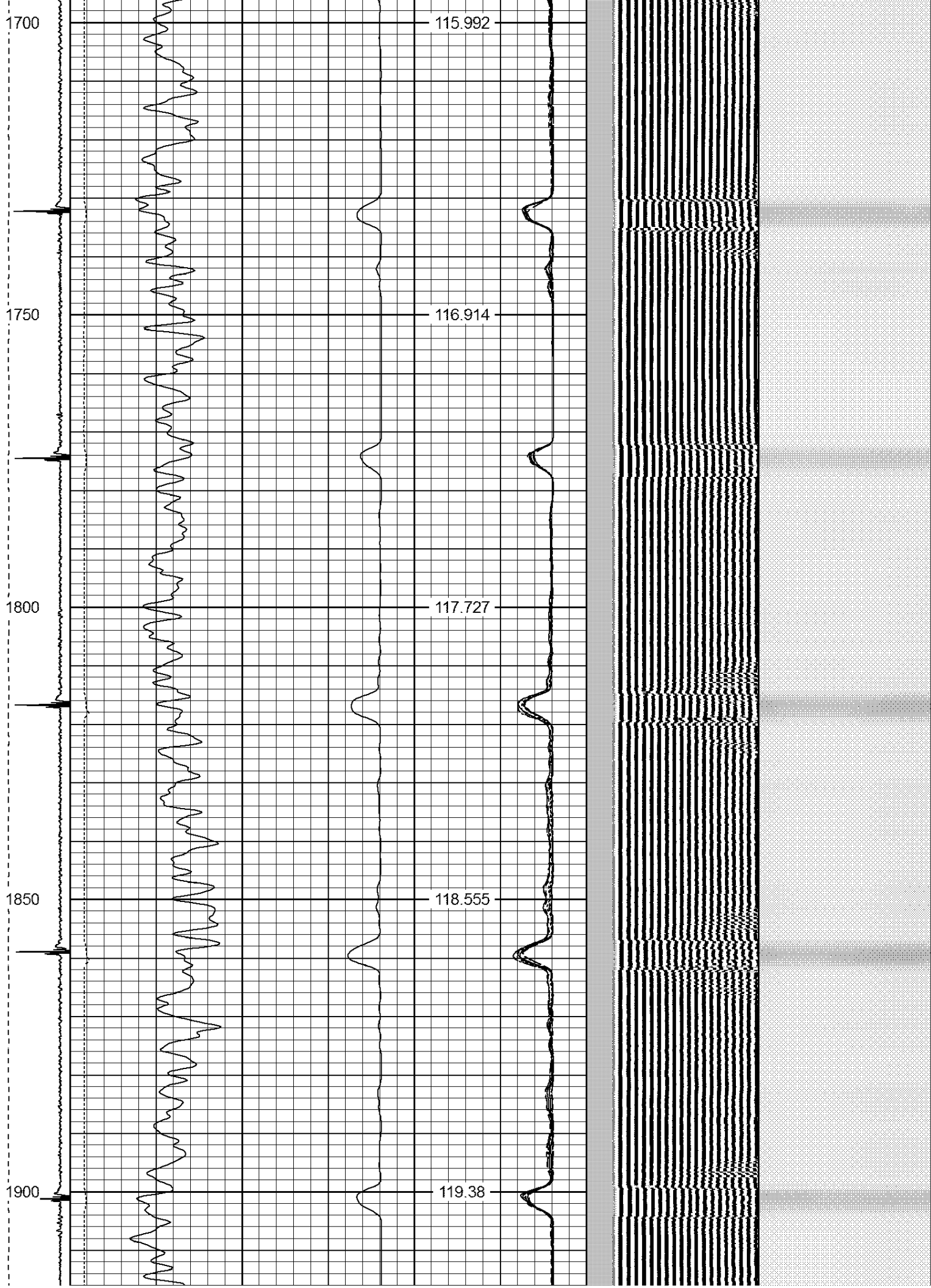


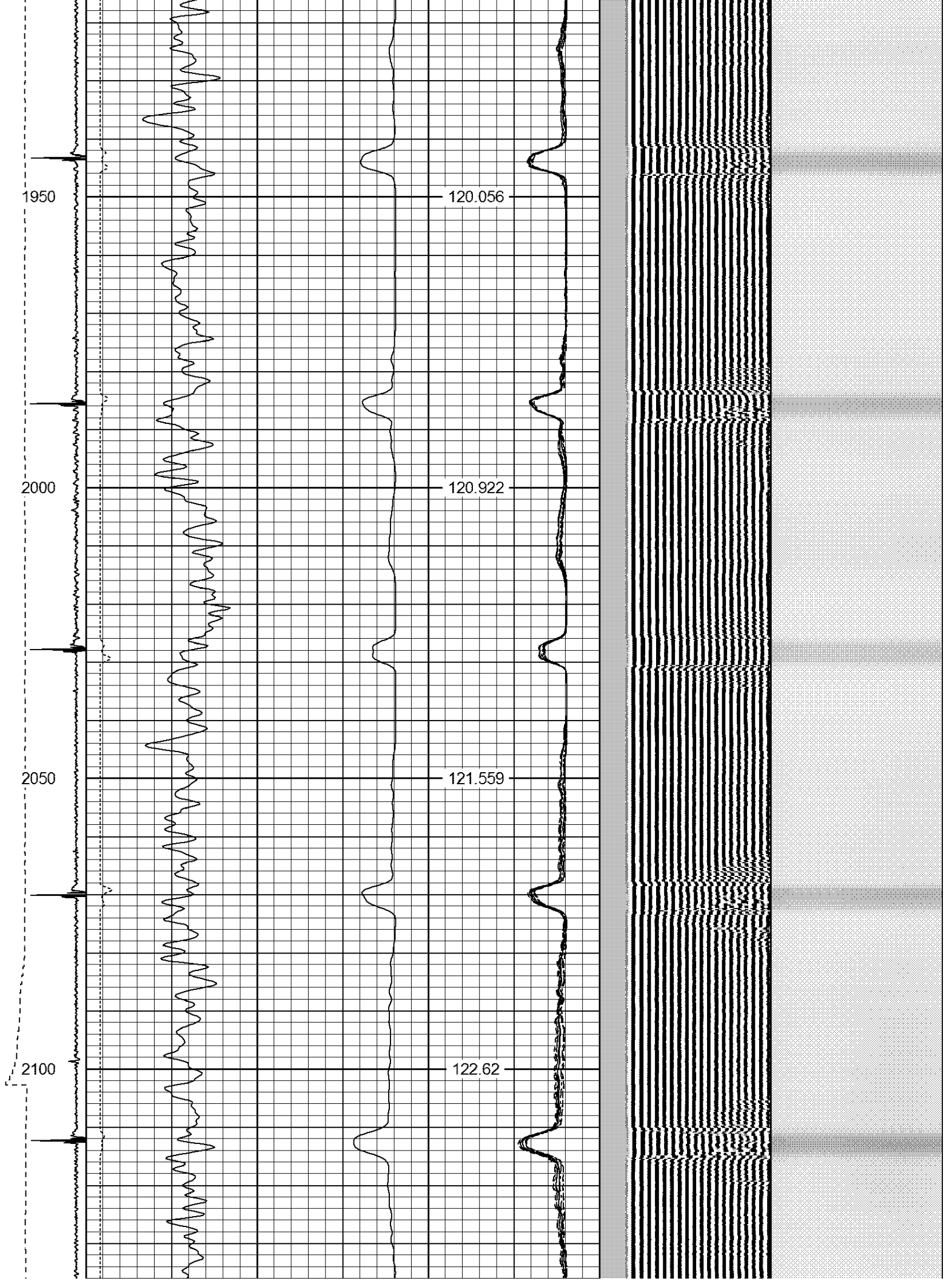












2150

123.249

2200

123.823

2250

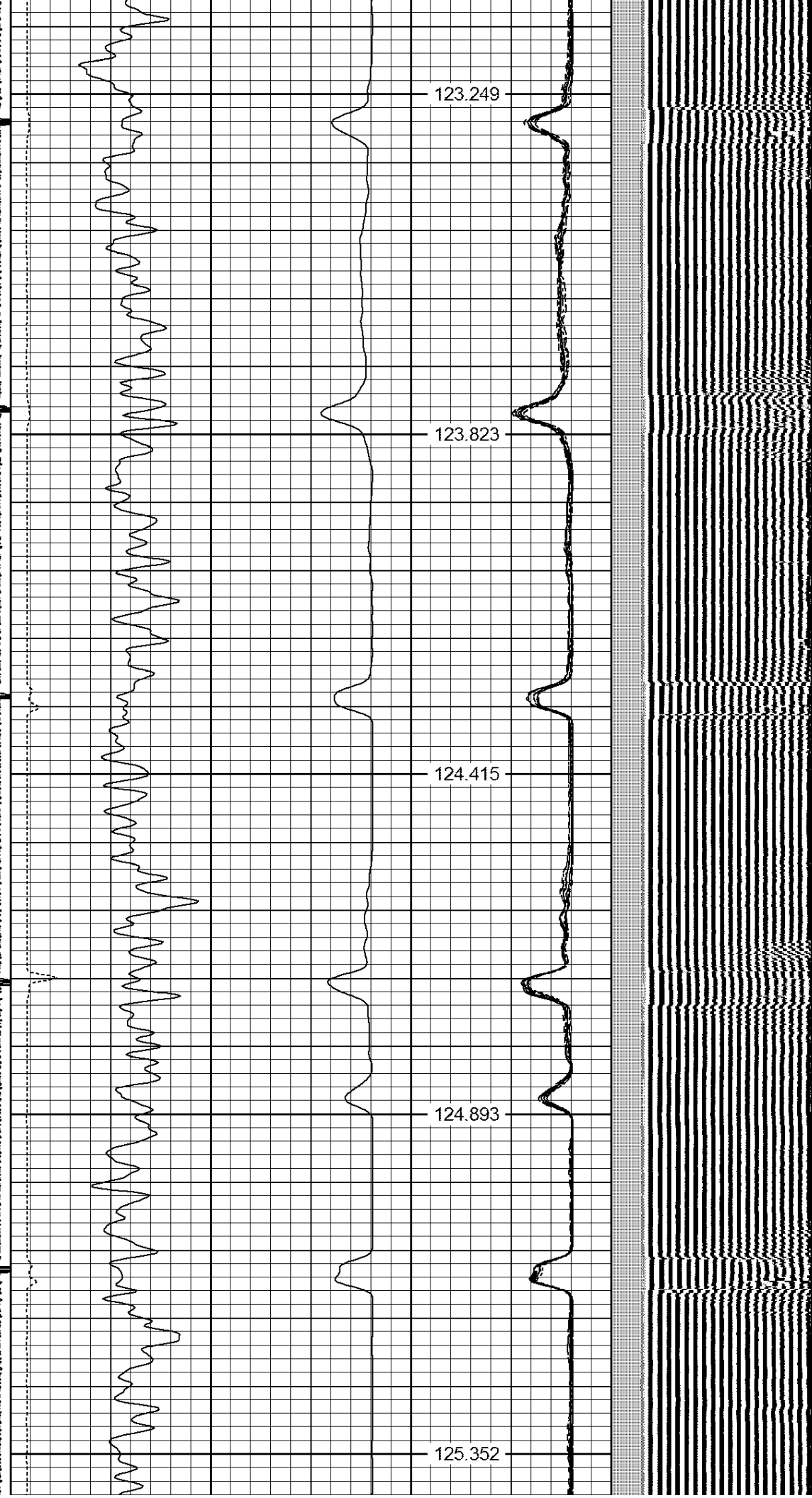
124.415

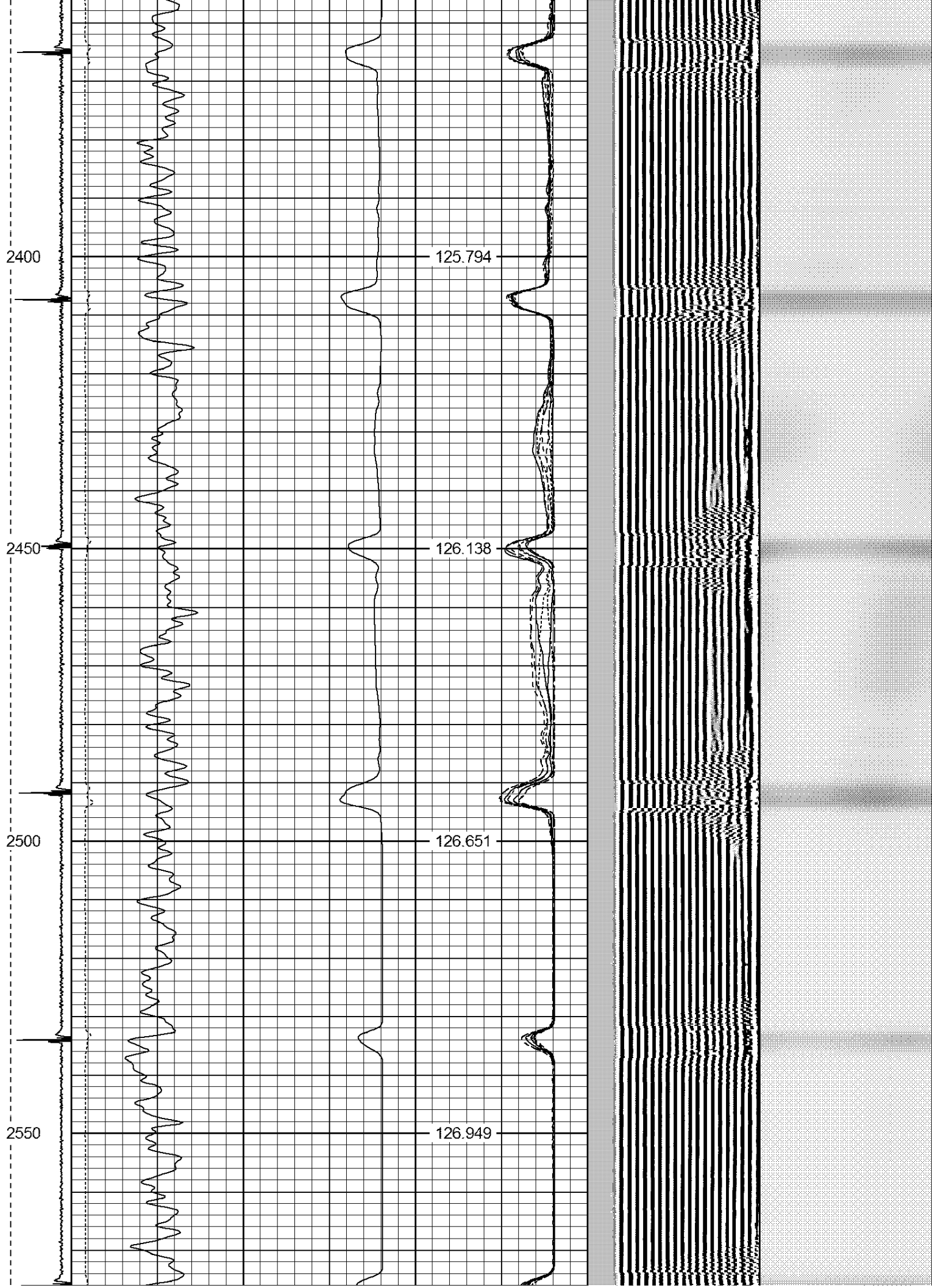
2300

124.893

2350

125.352





2600

127.37

2650

127.726

2700

127.97

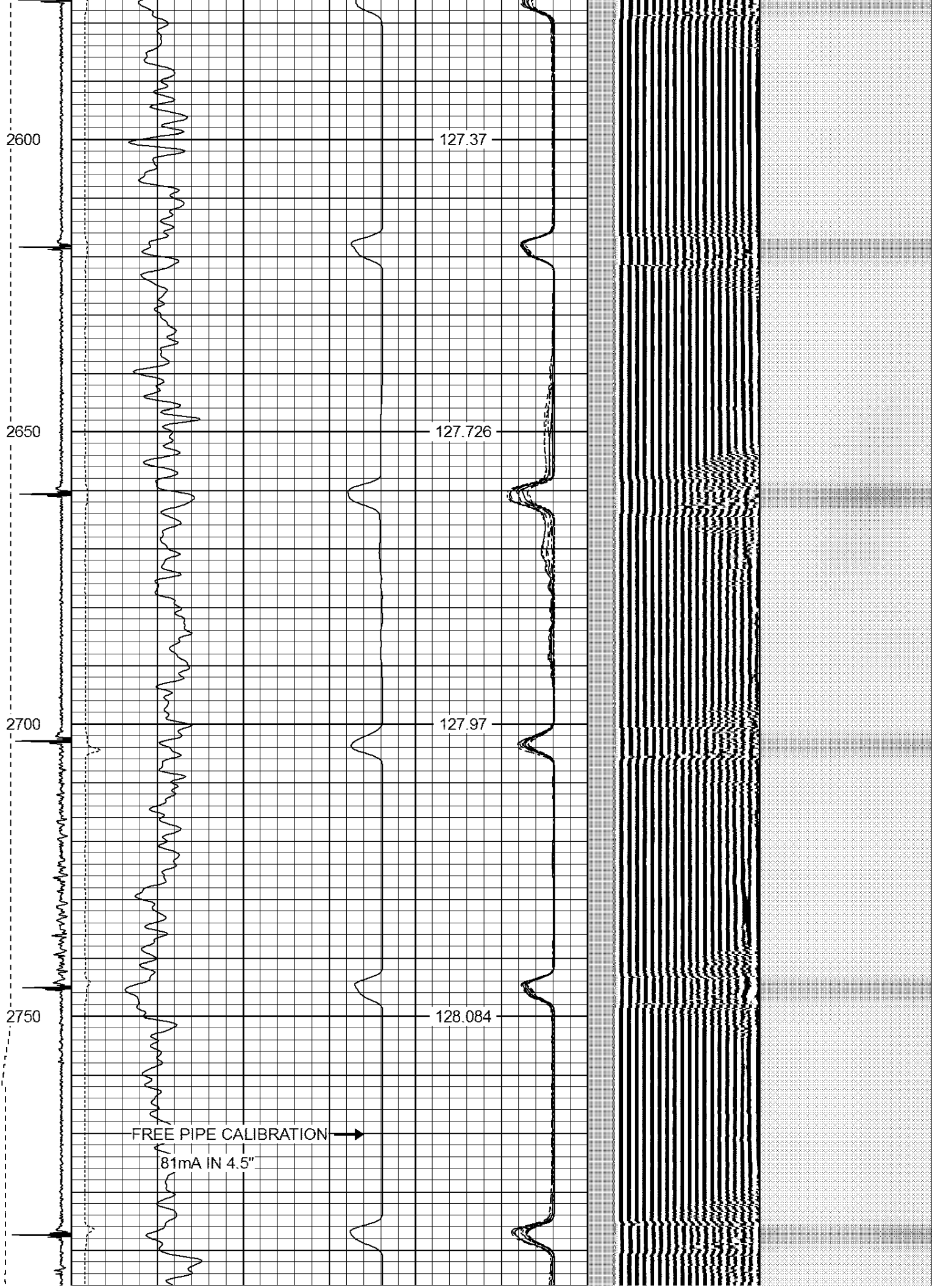
2750

128.084

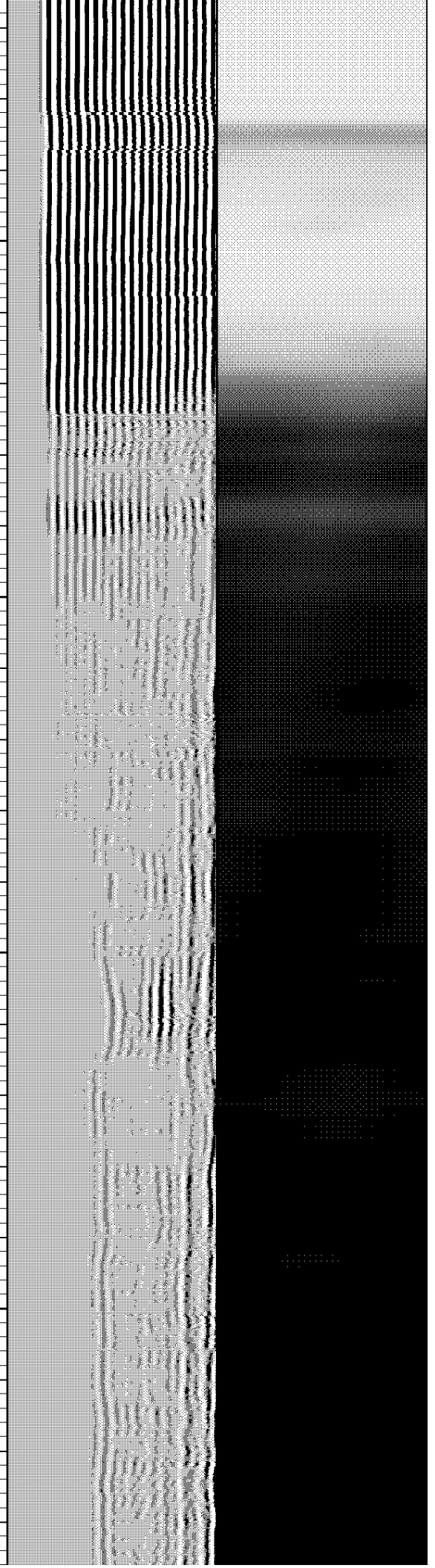
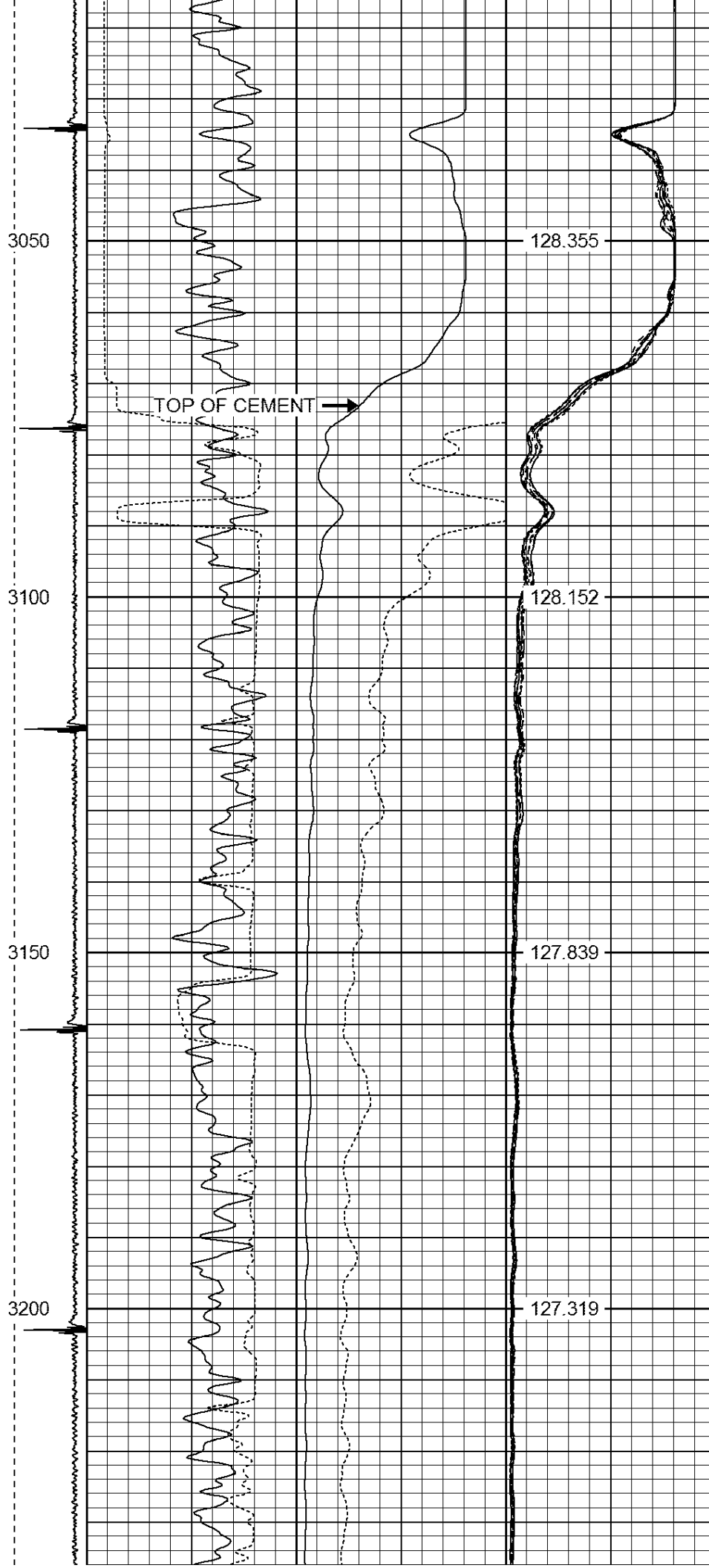
FREE PIPE CALIBRATION

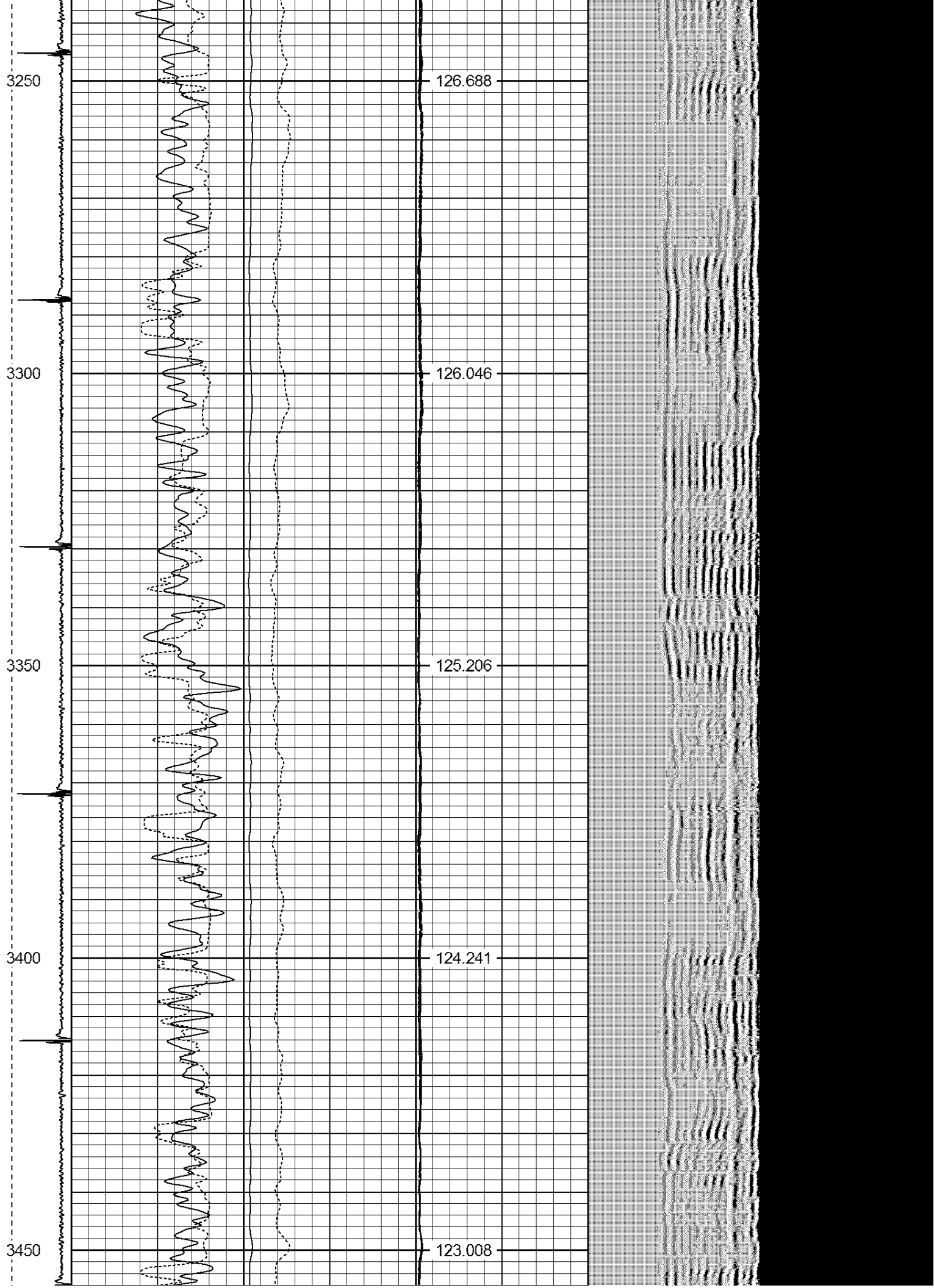


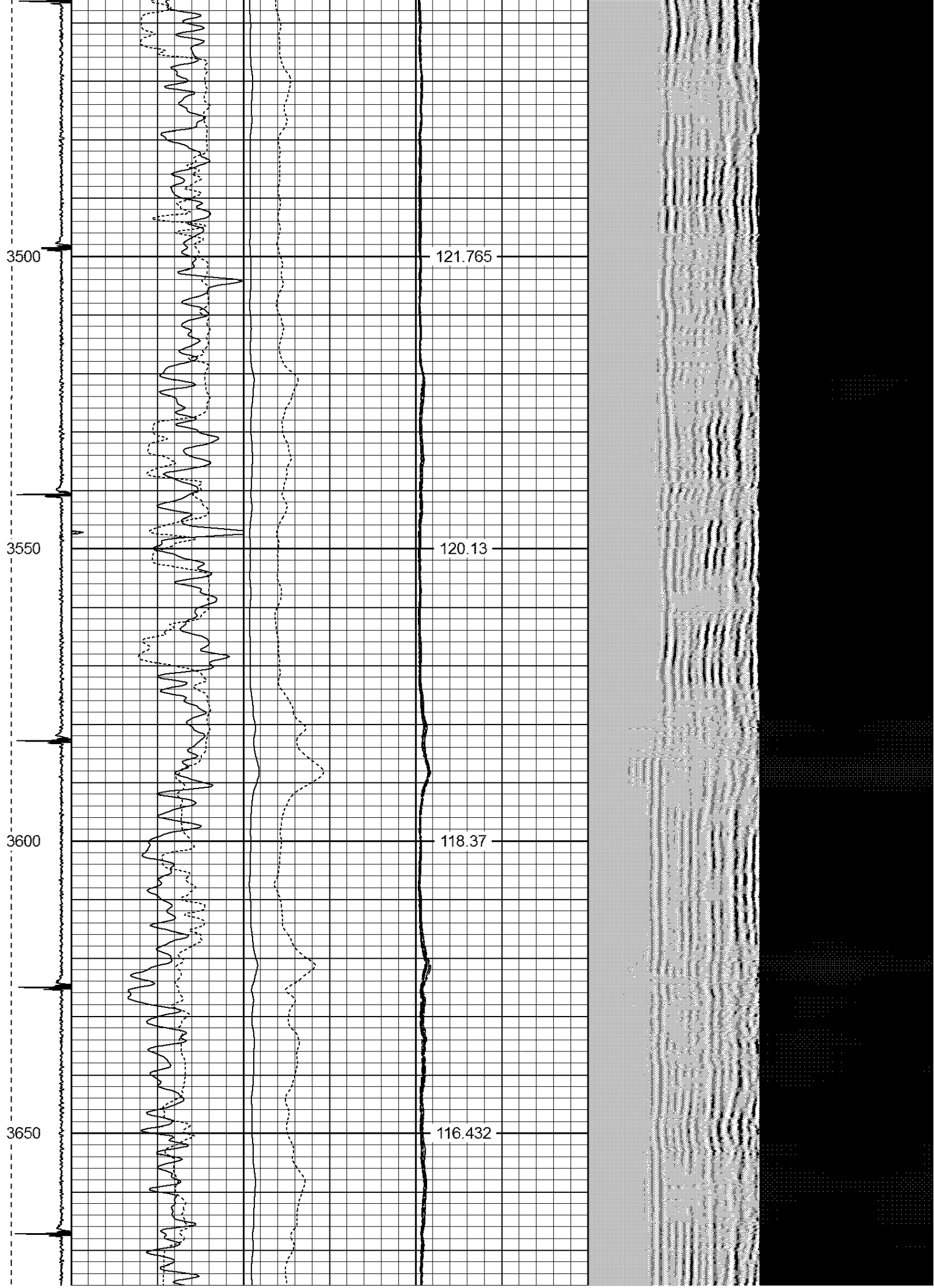
81mA IN 4.5"











3700

114.221

3750

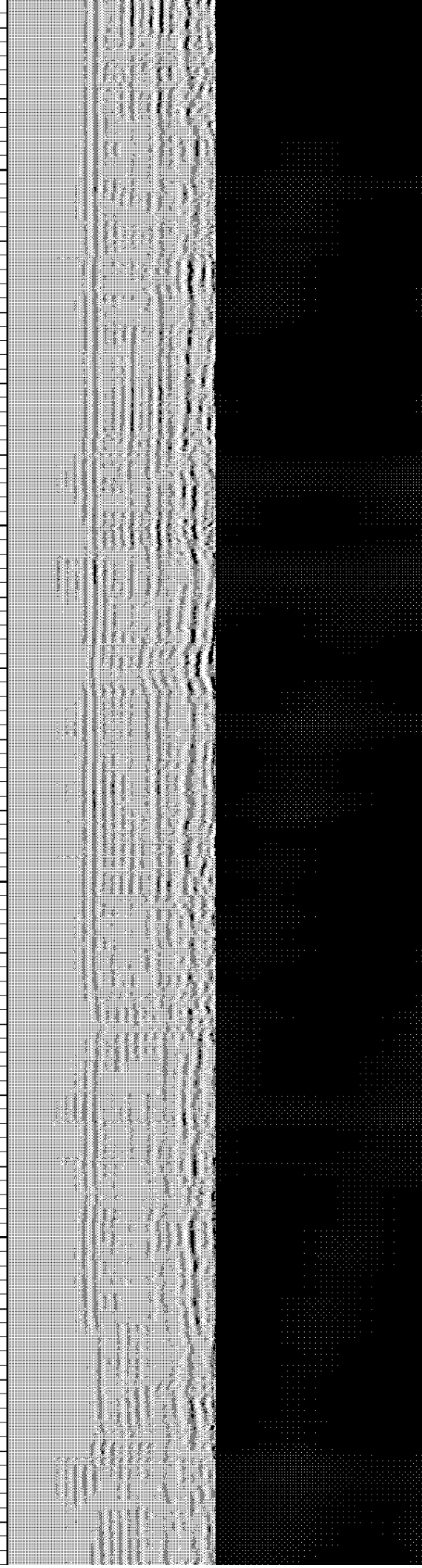
111.791

3800

109.163

3850

106.295



Background Reading:		35.0	cps			
Calibrator Reading:		160.0	cps			
Sensitivity:		1.0000	GAPI/cps			
Compensated Neutron Calibration Report						
Serial Number:		275				
Tool Model:		Probe_B				
CALIBRATION		Wed Jul 30 08:47:19 2008				
Detector		Readings		Target	Normalization	
Short Space		5001.20	cps	0.00	cps	1.0000
Long Space		1029.31	cps	0.00	cps	1.0000
PRE-SURVEY VERIFICATION						
Detector		Readings		Measured	Target	
1)	Short Space		cps			
	Long Space		cps	pu	pu	
2)	Short Space		cps			
	Long Space		cps	pu		
3)	Short Space		cps			
	Long Space		cps	pu		
POST-SURVEY VERIFICATION						
Detector		Readings		Measured	Target	
1)	Short Space		cps			
	Long Space		cps	pu	pu	
2)	Short Space		cps			
	Long Space		cps	pu	pu	
3)	Short Space		cps			
	Long Space		cps	pu	pu	
Segmented Cement Bond Log Calibration Report						
Serial Number:		Base				
Tool Model:		Probe				
Calibration Casing Diameter:		4.500	in			
Calibration Depth:		1600.483	ft			
Master Calibration, performed Tue Feb 16 19:13:37 2016:						
		Raw (v)		Calibrated (mv)		Results
		Zero	Cal	Zero	Cal	Gain Offset
3'		0.003	2.500	2.000	81.196	31.713 1.915
CAL		1.454	2.500			
5'		0.003	2.500	2.000	81.196	31.712 1.916
SUM						
S1		0.005	2.500	0.500	81.000	32.269 0.328
S2		0.004	2.500	0.500	81.000	32.246 0.385
S3		0.005	2.500	0.500	81.000	32.258 0.354
S4		0.004	2.500	0.500	81.000	32.251 0.372
S5		0.003	2.500	0.500	81.000	32.235 0.412
S6		0.004	2.500	0.500	81.000	32.256 0.359
S7		0.003	2.500	0.500	81.000	32.235 0.328

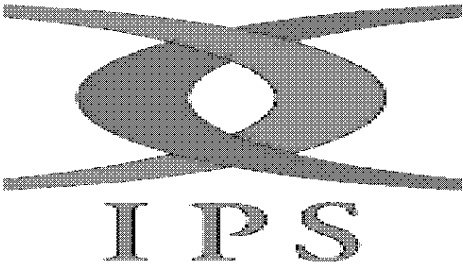
S7	0.007	2.500	0.500	81.000	32.285	0.286
S8	0.005	2.500	0.500	81.000	32.267	0.331

Internal Reference Calibration, performed Tue Jun 05 07:53:42 2012:

	Raw (v)		Calibrated (v)		Results	
	Zero	Cal	Zero	Cal	Gain	Offset
CAL	0.000	0.000	1.454	2.500	1.000	0.000

Air Zero Calibration, performed Tue Feb 16 19:00:05 2016:

	Raw (v)		Calibrated (v)		Results	
	Zero		Zero		Offset	
3'	0.000		0.000		0.000	
5'	0.000		0.000		0.000	
SUM						
S1	0.000		0.000		0.000	
S2	0.000		0.000		0.000	
S3	0.000		0.000		0.000	
S4	0.000		0.000		0.000	
S5	0.000		0.000		0.000	
S6	0.000		0.000		0.000	
S7	0.000		0.000		0.000	
S8	0.000		0.000		0.000	



Company	ANADARKO PETROLEUM CORPORATION
Well	DAVIS 13-15
Field	WATTENBERG
County	WELD
State	CO