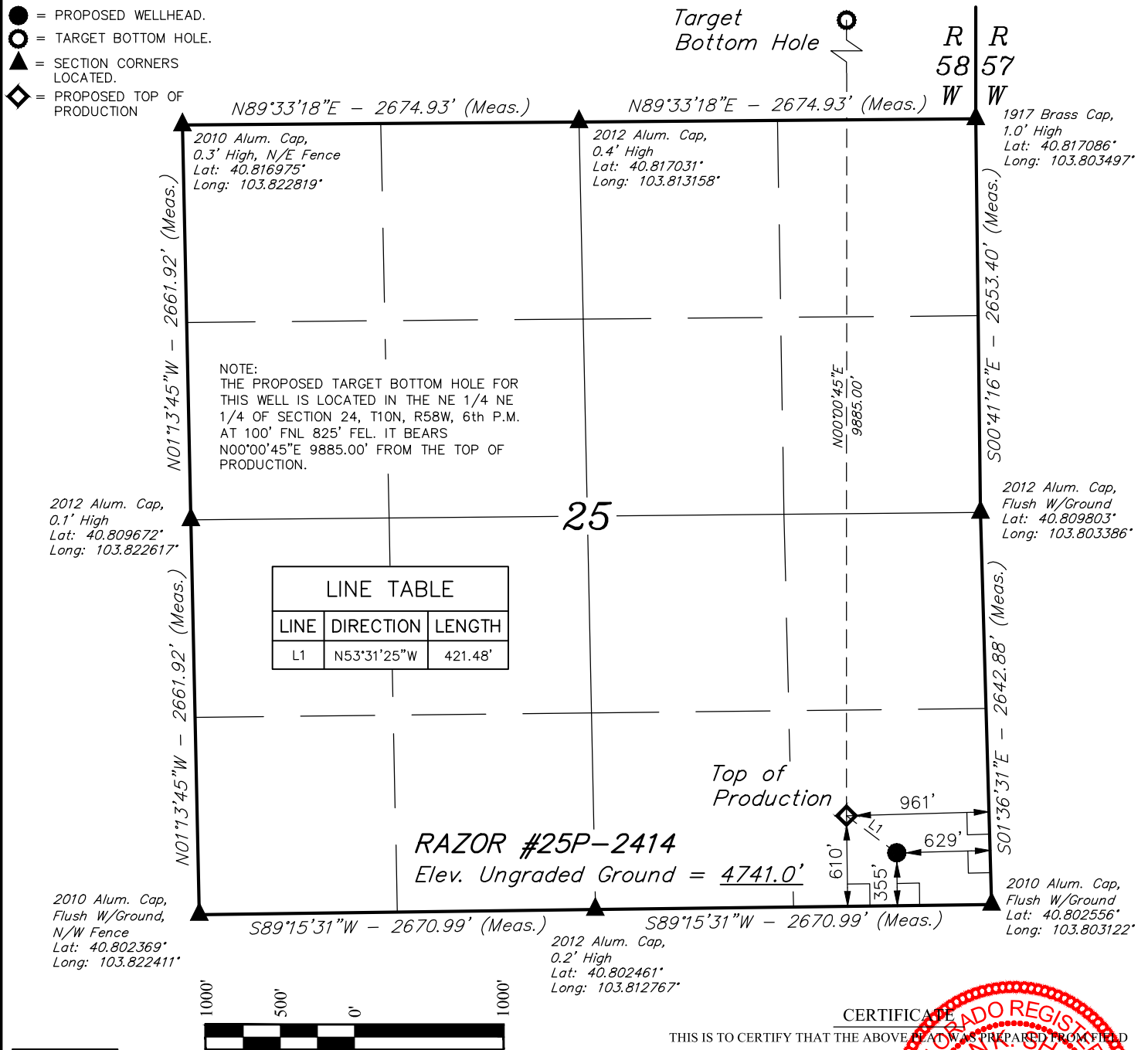


LEGEND:

- = 90° SYMBOL
- = PROPOSED WELLHEAD.
- = TARGET BOTTOM HOLE.
- = SECTION CORNERS LOCATED.
- = PROPOSED TOP OF PRODUCTION

T10N, R58W, 6th P.M.



PDOP = 1.4

NAD 83 (SURFACE LOCATION)	NAD 83 (TOP OF PRODUCTION)
LATITUDE = 40°48'12.63" (40.803508)	LATITUDE = 40°48'15.10" (40.804194)
LONGITUDE = 103°48'19.55" (103.805431)	LONGITUDE = 103°48'23.95" (103.806653)
NAD 27 (SURFACE LOCATION)	NAD 27 (TOP OF PRODUCTION)
LATITUDE = 40°48'12.68" (40.803522)	LATITUDE = 40°48'15.15" (40.804208)
LONGITUDE = 103°48'17.74" (103.804928)	LONGITUDE = 103°48'22.14" (103.806150)

BASIS OF BEARINGS

BASIS OF BEARINGS IS A G.P.S. OBSERVATION

BASIS OF ELEVATION

SPOT ELEVATION LOCATED AT THE NORTHEAST CORNER OF SECTION 15, T9N, R58W, 6th P.M. TAKEN FROM THE GATEHOOK SPRING, QUADRANGLE, COLORADO, WELD COUNTY, 7.5 MINUTE QUAD (TOPOGRAPHIC MAP) PUBLISHED BY THE UNITED STATES DEPARTMENT OF THE INTERIOR, GEOLOGICAL SURVEY. SAID ELEVATION IS MARKED AS BEING 4679 FEET.



WHITING OIL & GAS CORP.

RAZOR #25P-2414 (SURFACE LOCATION)
SE 1/4 SE 1/4, SECTION 25, T10N, R58W, 6th P.M.
WELD COUNTY, COLORADO

SURVEYED BY: CHAD MEIERS, C.M.	DATE: 03-13-15
DRAWN BY: J.A.	DATE DRAWN: 03-26-15
SCALE: 1" = 1000'	REVISED: 03-07-16 M.F.D.

WELL LOCATION PLAT

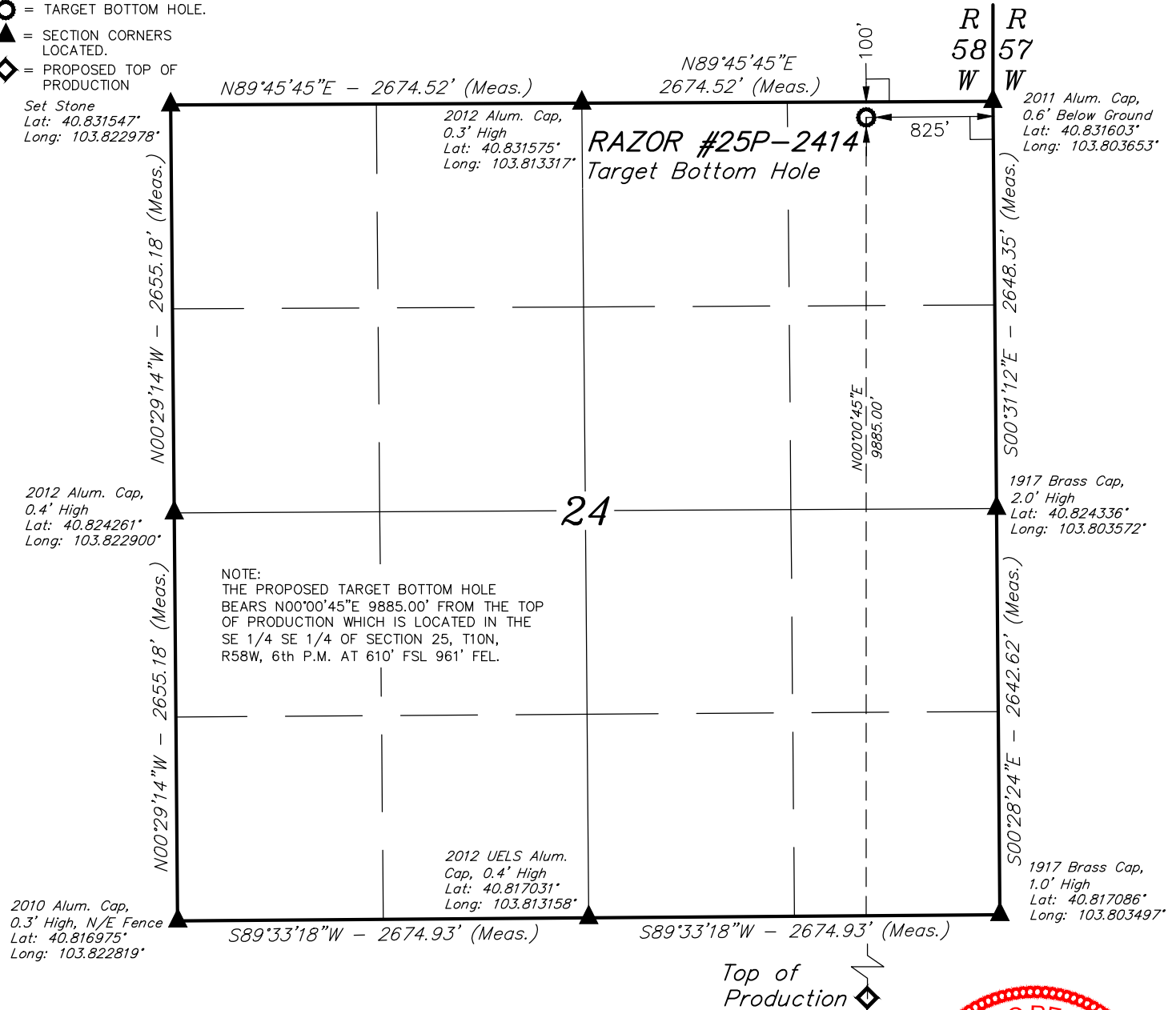


UELS, LLC
Corporate Office * 85 South 200 East
Vernal, UT 84078 * (435) 789-1017

LEGEND:

- = 90° SYMBOL
- = PROPOSED WELLHEAD.
- = TARGET BOTTOM HOLE.
- = SECTION CORNERS LOCATED.
- = PROPOSED TOP OF PRODUCTION

T10N, R58W, 6th P.M.



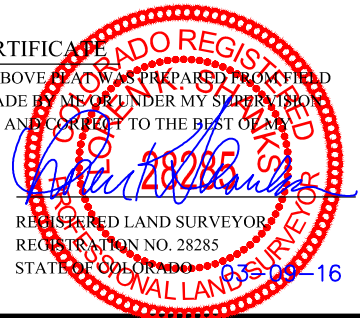
NOTE:
THE PROPOSED TARGET BOTTOM HOLE
BEARS N00°00'45"E 9885.00' FROM THE TOP
OF PRODUCTION WHICH IS LOCATED IN THE
SE 1/4 SE 1/4 OF SECTION 25, T10N,
R58W, 6th P.M. AT 610' FSL 961' FEL.

Top of
Production

CERTIFICATE

THIS IS TO CERTIFY THAT THE ABOVE PLAT WAS PREPARED FROM FIELD
NOTES OF ACTUAL SURVEYS MADE BY ME OR UNDER MY SUPERVISION
AND THAT THE SAME ARE TRUE AND CORRECT TO THE BEST OF MY
KNOWLEDGE AND BELIEF.

NAD 83 (TARGET BOTTOM HOLE)
LATITUDE = 40°49'52.75" (40.831319)
LONGITUDE = 103°48'23.87" (103.806631)
NAD 27 (TARGET BOTTOM HOLE)
LATITUDE = 40°49'52.80" (40.831333)
LONGITUDE = 103°48'22.07" (103.806131)



BASIS OF BEARINGS
BASIS OF BEARINGS IS A G.P.S. OBSERVATION

BASIS OF ELEVATION

SPOT ELEVATION LOCATED AT THE NORTHEAST CORNER OF SECTION 15, T9N, R58W,
6th P.M. TAKEN FROM THE GATEHOOK SPRING, QUADRANGLE, COLORADO, WELD
COUNTY, 7.5 MINUTE QUAD (TOPOGRAPHIC MAP) PUBLISHED BY THE UNITED STATES
DEPARTMENT OF THE INTERIOR, GEOLOGICAL SURVEY. SAID ELEVATION IS MARKED
AS BEING 4679 FEET.



WHITING OIL & GAS CORP.

RAZOR #25P-2414 (TARGET BOTTOM HOLE)
NE 1/4 NE 1/4, SECTION 24, T10N, R58W, 6th P.M.
WELD COUNTY, COLORADO

SURVEYED BY: CHAD MEIERS, C.M.	DATE: 03-13-15
DRAWN BY: J.A.	DATE DRAWN: 03-26-15
SCALE: 1" = 1000'	REVISED: 03-07-16 M.F.D.

WELL LOCATION PLAT



UELS, LLC
Corporate Office * 85 South 200 East
Vernal, UT 84078 * (435) 789-1017