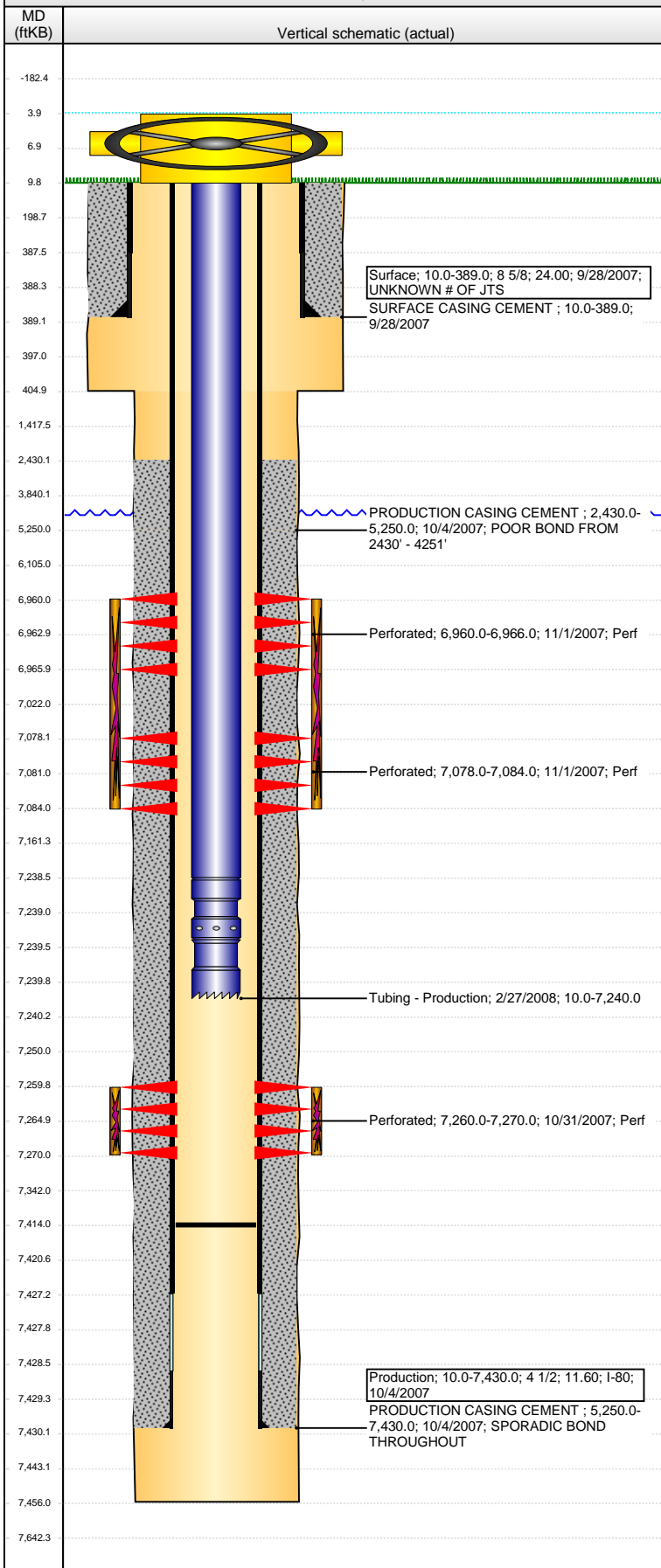


Well Name: CAMENISCH-STRAIGHT 13-34B

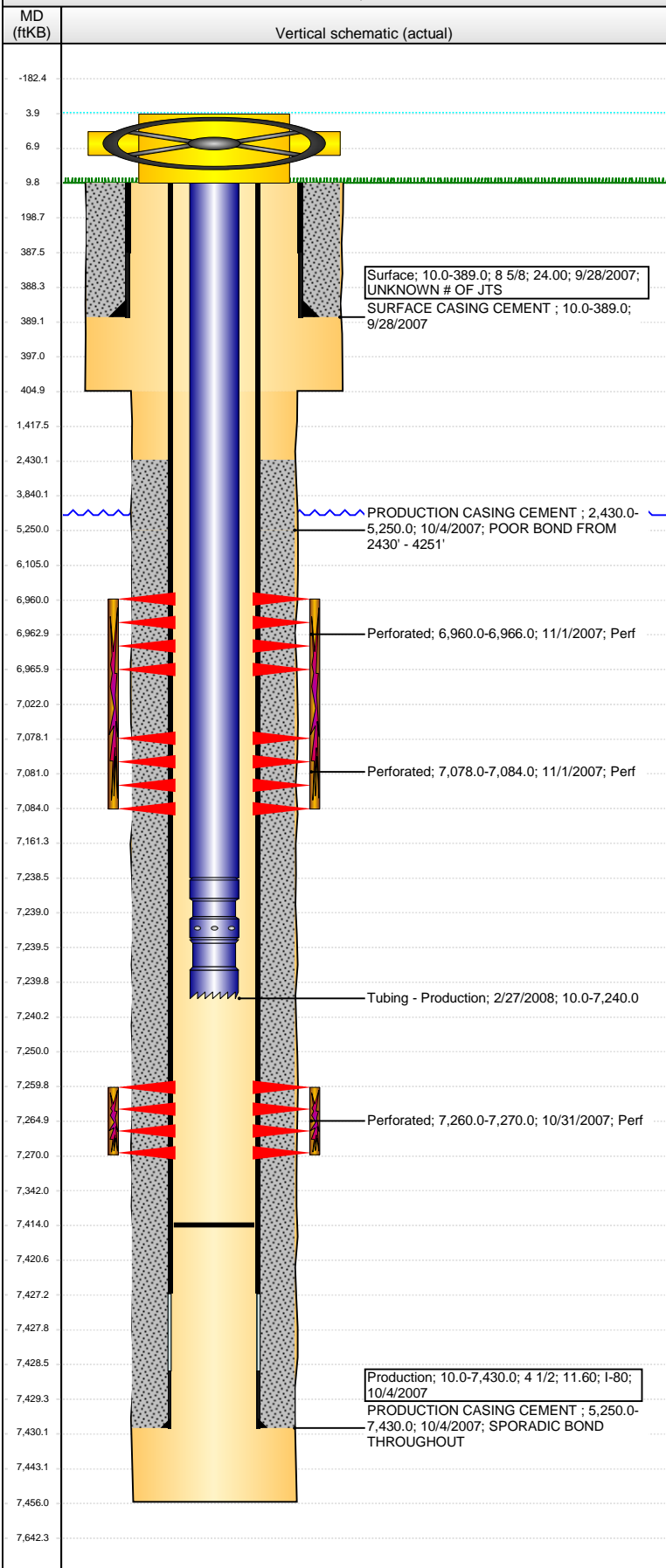
DEVIATED - ORIGINAL HOLE, 3/10/2016 8:57:08 AM



Well Header									
API		Business Unit		District		Well Config			
05-123-26246		DJ BASIN		15		DEVIATED			
Original KB Elevation (ft)		KB - GL / MSL (ftKB)		Spud Date		P & A Date			
4,694		10.00		9/28/2007					
Comment									
Directions To Well									
Congressional Location									
Quarter 1	Quarter 2	Quarter 3	Quarter 4	Section	Township	Twnshp N...	Range	Rng E/W Dir	
		SE	SE	33	5 N		66	W	
Bottom Hole Location									
North-South Distance (ft)		From N or S Line		East-West Distance (ft)		From E or W Line			
Plug Back Total Depths									
Date	Depth (ftKB)	Method		Com					
10/4/2007	7,414.0	TAG		FLOAT SHOE					
10/18/2007	7,395.0	CASED HOLE LOG		DEPTH LOGGER FROM CBL					
2/27/2008	7,414.0	TAG		CLEAN OUT & LAND TBG					
Wellbore Sections									
Section Des		Size (in)		Act Top, MD (ftKB)		Act Btm, MD (ftKB)			
SURFACE		12 1/4		10.0		405.0			
PRODUCTION		7 7/8		405.0		7,456.0			
Zone Statuses									
Zone Name	Status Date	Status	Fluid Type	Job	Prod Method				
NIOBRARA	11/10/2007	PR		DRILLING/CO...					
CODELL	11/10/2007	PR		DRILLING/CO...					
Casing Strings									
Surface, 389.0ftKB									
Casing Description	Run Date	OD (in)	Wt/Len (l...)	Grade	Top, MD (ft...)	MD (ftKB)			
Surface	9/28/2007	8 5/8	24.00	I-80	10.0	389.0			
Production, 7,430.0ftKB									
Casing Description	Run Date	OD (in)	Wt/Len (l...)	Grade	Top, MD (ft...)	MD (ftKB)			
Production	10/4/2007	4 1/2	11.60	I-80	10.0	7,430.0			
Cement									
Description					Top Depth (ftKB)	Bottom Depth (ftKB)			
SURFACE CASING CEMENT					10.0	389.0			
Description					Top Depth (ftKB)	Bottom Depth (ftKB)			
PRODUCTION CASING CEMENT					2,430.0	5,250.0			
Description					Top Depth (ftKB)	Bottom Depth (ftKB)			
PRODUCTION CASING CEMENT					5,250.0	7,430.0			
Tubing Strings									
Tubing Description	Run Date	String...	ID (in)	Wt (lb/ft)	Grade	Len (ft)	Set De...		
Tubing - Production	2/27/2008	2 3/8	1.995	4.70	J-55	7,230.00			
Tubing Components									
Item Des	OD (in)	Wt (lb/ft)	Grade	Jts	Len (ft)	Btm (ftKB)	Btm (TVD) (ftKB)		
EUE 8rd Tubing	2 3/8	4.70	J-55	222	7,228.40	7,238.4			
Pump Seating Nipple	2 3/8	1.10			1.00	7,239.4			
Notched collar	2 3/8				0.60	7,240.0			
Perforation Data									
Zone	Bnch/St g	Entered Shot Total	Top (ftKB)	Btm (ftKB)	Date				
NIOBRARA, ORIGINAL HOLE	A	36	6,960.00	6,966.00	11/1/2007				
NIOBRARA, ORIGINAL HOLE	B	36	7,078.00	7,084.00	11/1/2007				
CODELL, ORIGINAL HOLE		40	7,260.00	7,270.00	10/31/2007				
Stimulations & Treatments									
Date	Zone	Primary Job Type							
11/1/2007	NIOBRARA, ORIGINAL HOLE	DRILLING/COMPLETION - ORIGINAL							
Technical Result		Tech Result Details				Tech Result Note			
Comment									

Well Name: CAMENISCH-STRAIGHT 13-34B

DEVIATED - ORIGINAL HOLE, 3/10/2016 8:57:11 AM



Stimulations & Treatments				
Date	Zone	Primary Job Type		
11/1/2007	CODELL, ORIGINAL HOLE	DRILLING/COMPLETION - ORIGINAL		
Technical Result		Tech Result Details		Tech Result Note
Comment				
Other In Hole				
Run Date	Des	OD (in)	Top (ftKB)	Btm (ftKB)
Logs				
Date	Type	Top, MD (ftKB)	Btm, MD (ftKB)	
10/3/2007	COMPENSATED DENSITY	389.0	7,451.0	
10/18/2007	CBL/CCL/GR	2,261.0	7,393.0	