

HALLIBURTON

iCem[®] Service

Post Job Report

GREAT WESTERN OIL & GAS LLC

For:

Date: Tuesday, April 29, 2014

Bruegman South EG 34-021 HN

Case 1

Sincerely,

CHRISTOPHER PICKELL

Table of Contents

1.1	Executive Summary	3
1.2	Cementing Job Summary	4
1.3	Planned Pumping Schedule	7
1.4	Job Overview	7
1.5	Job Event Log	9
2.0	Attachments	11
3.0	Custom Graphs	11
3.1	Custom Graph	11

1.1 Executive Summary

Halliburton appreciates the opportunity to perform the cementing services on the Bruegman South EG 34-021HN cement Intermediate casing job. A pre-job safety meeting was held before the job where details of the job were discussed, potential safety hazards were reviewed, and environmental compliance procedures were outlined.

Halliburton maintains a continuous quality improvement process and appreciates any comments or suggestions that you may have. Halliburton again thanks you for the opportunity to perform service work on this well. We hope to be your solutions provider for future projects.

Respectfully,

Halliburton [Brighton]

Job Times

	Date	Time	Time Zone
Requested Time On Location	04/09	1630	MST
Called Out	04/09	1230	MST
On Location	04/09	1630	MST
Job Started	04/09	2207	MST
Job Completed	04/09	2345	MST
Departed Location	04/09	0100	MST

1.2 Cementing Job Summary

<i>The Road to Excellence Starts with Safety</i>					
Sold To #: 346459		Ship To #: 3282194		Primary Sales Order #: 0901255756	
Customer: GREAT WESTERN OIL & GAS LLC - eBUS			Job Purpose: 7521 CMT SURFACE CASING BOM		
Well Name: BRUEGMAN SOUTH -EG-			Well #: 34-021 HN		API/UWI #: 05-123-38842-00
Field: WATTENBERG		City: EAT		Country/Parish: WELD	State/Prov: COLORADO
Legal Description:					
Rig Name & Number / Phone Number: Xtreme 17 / 303-218-5371					Location: LAND
myCem id# :		Job Criticality Status: GREEN		iFacts Request id #:	
Contacts					
Type	Name	Email	Phone		
Service Coordinator	Jared Whipple	Jared.Whipple@Halliburton.com	+13036554782		
Account Rep	Jon Gregory	Jon.Gregory@Halliburton.com	+19702104722		
Company Man					
<i>PPE, Safety Huddles, JSA's, HOC & Near Miss Reporting, BBP Observations</i>					
Distance/Mileage(1 way)		30 mile	Distance/Mileage(1 way) Mtls:		30 mile
Srvcs:			Rqstd Job Start Date/Time:		04/07/2014
HSE Information					
H2S Present:		Unknown	CO2 Present:		Unknown
Drive Safely. Lights On for Safety. Wear Seat Belts. Observe all HES / Customer Safety Policies.					
Directions:					
from the yard go West on CR 8 to Hwy 85, North on Hwy 85 to Eaton, From Eaton go East on CR 74 12 miles, then North to location.					
Instruction					
Job Info / Well Data					
Job Depth (MD) ft	Job Depth (TVD) ft	Well Fluid Type	Well Fluid Weight lbm/gal	Displacement Fluid	Displ Fluid Weight lbm/gal
833				Displacemen	8.33

BHST degF		BHCT degF		Log Temp degF		t		Time Since Circ Stopped HH:MM:SS			
Job Tubulars/Tools											
Description	Size in	Weight lbm/ft	ID in	Thread	Grade	Top MD ft	Btm MD ft	Top TVD ft	Btm TVD ft	Shoe Jnt ft	% Excess
13.5" Open Hole			13.5			0	966				
9.625" Surface Casing	9.625	36	8.921		J-55	0	966		0	42	
Mud conditioning plan											
The condition of the drilling fluid is one of the most important variables in achieving a cement barrier. Prior to cementing, circulate the mud at the planned highest displacement rate for the cement job for at least 2 bottoms-up until the well is clean, mud is free of gas and pump pressures have stabilized.											
Materials											
Stage/Plug #: 1											
Fluid #	Fluid Name	Package/SBM/Material Name	Rqstd Del Qty	UOM	Density lbm/gal	Yield ft ³ /sack	Water Req Gal/sack	Rate bbl/min	Total Mix Fluid Gal/sack	Surface Batch Mixing Time hr	
	Lead Cement	SWIFTCM (TM) SYSTEM	365	sack	14.2	1.54	7.64	6	7.64		
Facts Test id #											
Fluid #	Fluid Name	Package/SBM/Material Name	Rqstd Del Qty	UOM	Density lbm/gal	Yield ft ³ /sack	Water Req Gal/sack	Rate bbl/min	Total Mix Fluid Gal/sack	Surface Batch Mixing Time	
	Displacement		62.5	bbl	8.33						
Facts Test id #											
Caution: Displacement quantities and densities are estimates ONLY! Do not use them for the actual job.											

Packaged Materials				
SAP #	Material	Qty	UOM	Comments
	FRESH WATER	2788.6	Gal	

1.3 Planned Pumping Schedule

Stage /Plug #	Fluid #	Fluid Type	Fluid Name	Surface Density lbm/gal	Avg Rate bbl/min	Surface Volume	Downhole Volume
1	2	Spacer	Mud Flush III	8.4	4.00	12.0bbl	12.0bbl
1	2	Cement Slurry	Lead Cement	12.50	6.00	400.0 sacks	400.0 sacks

1.4 Job Overview

		Units	Description
1	Surface temperature at time of job	°F	
2	Mud type (OBM, WBM, SBM, Water, Brine)	-	WBM
3	Actual mud density	lb/gal	
4	Actual mud Plastic Viscosity (PV)	cP	
5	Actual mud Yield Point (YP)	lb _f /100ft ²	
6	Actual mud 30 min Gel Strength	lb _f /100ft ²	
7	Time circulated before job	HH:MM	
8	Mud volume circulated	Bbls	
9	Rate at which well was circulated	Bpm	
10	Pipe movement during hole circulation	Y/N	
11	Rig pressure while circulating	Psi	
12	Time from end mud circulation to start of job	HH:MM	
13	Pipe movement during cementing	Y/N	
14	Calculated displacement	Bbls	
15	Job displaced by	Rig/HES	
16	Annular flow before job	Y/N	N
17	Annular flow after job	Y/N	N
18	Length of rat hole	Ft	
19	Units of gas detected while circulating	Units	
20	Was lost circulation experienced at any time?	Y/N	

1.5 Job Event Log**HALLIBURTON**GREAT WESTERN OIL & GAS LLC
BRUEGMAN SOUTH -EG- 34-021 HN
BRUEGMAN SOUTH -EG- 34-021 HN**1.1 Job Event Log**

Type	Seq. No.	Activity	Graph Label	Date	Time	Source	DH Density (ppg)	PS Pump Press (psi)	Comb Pump Rate (bbl/min)	Comb Pump Total bbl	Comment
Event	1	Call Out	Call Out	4/9/2014	12:30:00	USER					Crew called out at 1230 to be on location at 1730. Crew was Christopher Pickell, Roy Nesbitt, Keaton Simmons
Event	2	Depart from Service Center or Other Site	Depart from Service Center or Other Site	4/9/2014	15:00:00	USER					Safety meeting held for journey. Left the yard for Xtreme 17
Event	3	Arrive At Loc	Arrive at Loc	4/9/2014	16:30:00	USER					Arrive at location 1 hour early. Casing crew just beginning to rig up to run casing.
Event	4	Rig-Up Equipment	Rig-Up Equipment	4/9/2014	20:00:00	USER					Hazard hunt performed. Rig up planned and executed.
Event	5	Safety Meeting	Safety Meeting	4/9/2014	21:40:00	USER					Safety meeting held with rig crew to discuss job safety and procedure.
Event	6	Start Job	Start Job	4/9/2014	22:07:10	COM5					Quick latch plug container used on job
Event	7	Prime Pumps	Prime Pumps	4/9/2014	22:07:25	COM5	8.33		1.70	3	Prime lines with 3 bbl of water
Event	8	Test Lines	Test Lines	4/9/2014	22:09:35	COM5	8.33	3500	1	4	Pressure test lines to 3500 psi
Event	9	Pump Spacer 1	Pump Water W/Red Dye	4/9/2014	22:11:32	COM5	8.33	50	1.7	14	Pump 10 bbl water with 1 pound of red dye
Event	10	Pump Cement	Pump Swiftcem 14.2#	4/9/2014	22:19:03	COM5	14.2	130	5.5	124	Pump 110 bbl Swiftcem cement 400 sks 14.2 ppg 1.54 cuft/sk 7.76 gal/sk
Event	11	Shutdown	Shutdown	4/9/2014	22:41:46	COM5					Shutdown to drop plug
Event	12	Drop Top Plug	Drop Top Plug	4/9/2014	22:43:09	COM5					Plug preloaded. Witnessed by company man. Wash pumps and lines on top of the plug

HALLIBURTON

GREAT WESTERN OIL & GAS LLC
BRUEGMAN SOUTH -EG- 34-021 HN
BRUEGMAN SOUTH -EG- 34-021 HN

Event	13	Pump Displacement	Pump Displacement	4/9/2014	22:43:18	COM5	8.4	325	6	201	Pump 77 bbl of displacement using pit water
Event	14	Bump Plug	Bump Plug	4/9/2014	23:06:24	COM5		342	2.5		Calculated pressure to land was 306. Plug landed with 324 psi going 500 psi over
Event	15	Other	Check Floats	4/9/2014	23:09:29	COM5		1344			Pressure was released after 3 minutes. Floats held. 1/2 bbl back to tanks
Event	16	Other	Casing Test	4/9/2014	23:15:49	COM5	8.4	2400	1.5		2400 psi casing test
Event	17	Other	Release Casing Pressure	4/9/2014	23:44:44	COM5		2445.00			Pressure was released after 30 minutes and climbing to 2445
Event	18	End Job	End Job	4/9/2014	23:45:58	COM5					All preflush and 15 bbl cement to surface
Event	19	Safety Meeting	Safety Meeting	4/9/2014	23:47:14	USER					Safety meeting held for rig down
Event	20	Rig Down Lines	Rig Down Lines	4/9/2014	23:49:48	USER					Rig down all equipment
Event	21	Depart Location for Service Center or Other Site	Leave location for the yard	4/10/2014	01:00:00	USER					Safety meeting held for journey. Left location for the yard

Density (ppg)

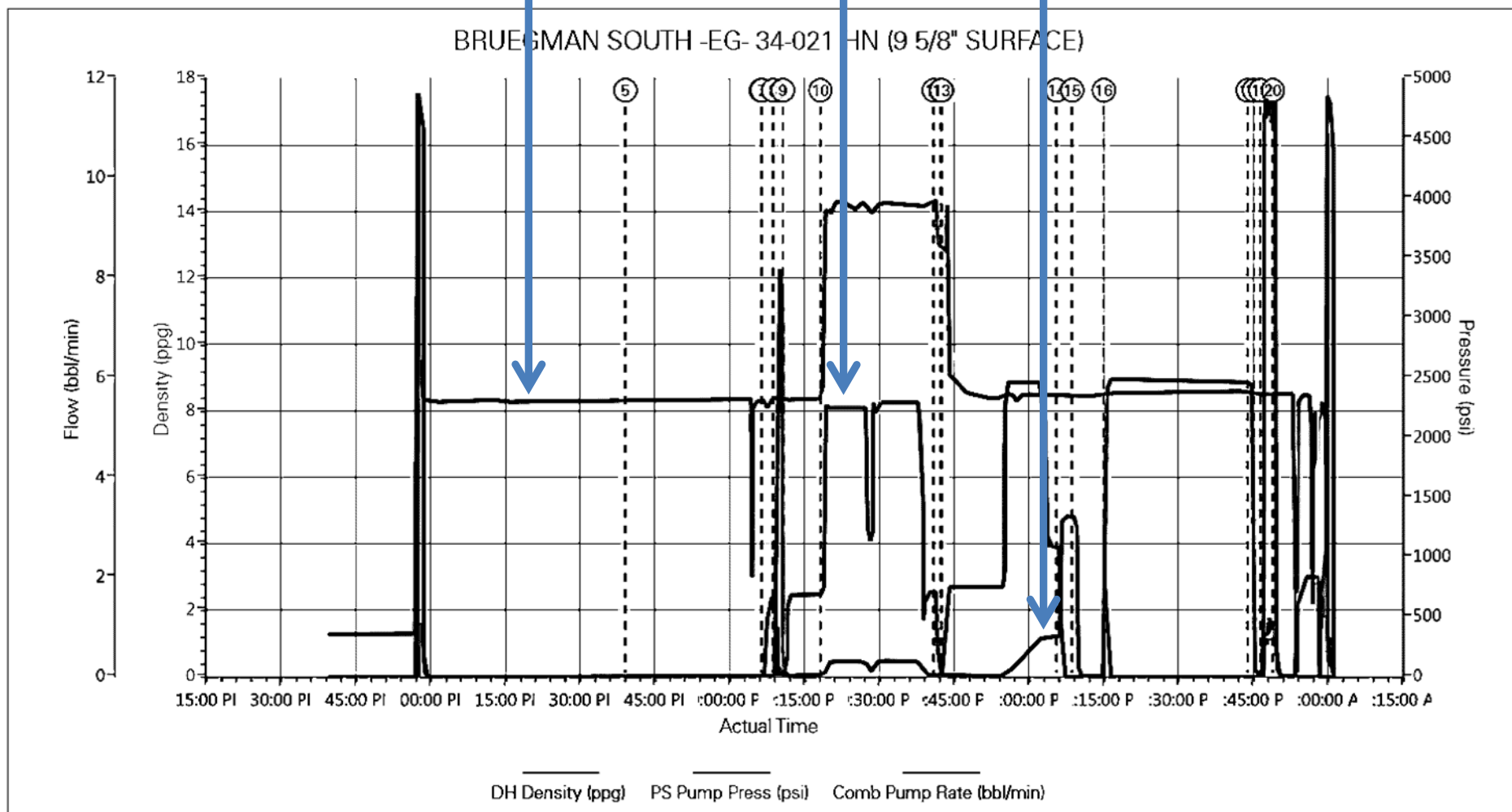
Rate (bpm)

Pressure (psi)

2.0 Attachments

3.0 Custom Graphs

3.1 Custom Graph



iCem® Service

Created: Tuesday, April 29, 2014

HALLIBURTON

iCem® Service

Post Job Report

Great Western Oil & Gas LLC - EBUS

For:

Date: Sunday, June 01, 2014

Bruegman South EG 34-021 HN Intermediate

GREAT WESTERN BRUEGMAN SOUTH EG

Sincerely,

Derek Trier

Table of Contents

1.1	Executive Summary	3
1.2	Cementing Job Summary	4
1.3	Planned Pumping Schedule	6
1.4	Job Event Log	7

1.1 Executive Summary

Halliburton appreciates the opportunity to perform the cementing services on the **Bruegman South EG 34-021HN** cement **Intermediate** casing job. A pre-job safety meeting was held before the job where details of the job were discussed, potential safety hazards were reviewed, and environmental compliance procedures were outlined.

Halliburton maintains a continuous quality improvement process and appreciates any comments or suggestions that you may have. Halliburton again thanks you for the opportunity to perform service work on this well. We hope to be your solutions provider for future projects.

Respectfully,

Halliburton [Brighton]

Job Times

	Date	Time	Time Zone
Requested Time On Location	05/11	0000	MST
Called Out	05/11	2000	
On Location	05/11	0000	
Job Started	05/11	0746	
Job Completed	05/11	1008	
Departed Location	05/11	1130	

1.2 Cementing Job Summary

HALLIBURTON

Cementing Job Summary

The Road to Excellence Starts with Safety

Sold To #: 346459		Ship To #: 3282194		Quote #: 0021860799		Sales Order #: 0901325212				
Customer: GREAT WESTERN OIL & GAS LLC - eBUS				Customer Rep:						
Well Name: BRUEGMAN SOUTH -EG-		Well #: 34-021 HN		API/UWI #: 05-123-38842-00						
Field: WATTENBERG		City (SAP): EAT		County/Parish: WELD		State: COLORADO				
Legal Description: SW SW-34-7N-64W-440FSL-343FVL										
Contractor: XTREME DRLG				Rig/Platform Name/Num: XTREME 17						
Job BOM: 7522										
Well Type: HORIZONTAL OIL										
Sales Person: HALAMERICA\HX46524				Srvc Supervisor: Joseph Fantasia						
Job										
Formation Name										
Formation Depth (MD)		Top		Bottom						
Form Type				BHST						
Job depth MD		7368ft		Job Depth TVD						
Water Depth				Wk Ht Above Floor						
Perforation Depth (MD)		From		To						
Well Data										
Description	New / Used	Size in	ID in	Weight lbm/ft	Thread	Grade	Top MD ft	Bottom MD ft	Top TVD ft	Bottom TVD ft
Casing		9.625	8.921	36			0	1048	0	1048
Casing		7	6.276	26		P-110	0	7368	0	0
Open Hole Section			8.75				1048	7365		0
Tools and Accessories										
Type	Size in	Qty	Make	Depth ft	Type	Size in	Qty	Make		
Guide Shoe	7			7368	Top Plug	7		HES		
Float Shoe	7				Bottom Plug	7		HES		
Float Collar	7				SSR plug set	7		HES		
Insert Float	7				Plug Container	7		HES		
Stage Tool	7				Centralizers	7		HES		
Miscellaneous Materials										
Gelling Agt		Conc		Surfactant		Conc	Acid Type		Qty	Conc
Treatment Fld		Conc		Inhibitor		Conc	Sand Type		Size	Qty
Fluid Data										
Stage/Plug #: 1										
Fluid #	Stage Type	Fluid Name	Qty	Qty UoM	Mixing Density lbm/gal	Yield ft ³ /sack	Mix Fluid Gal	Rate bbl/min	Total Mix Fluid Gal	
1	11.5 lb/gal Tuned Spacer III	Tuned Spacer III	30	bbl	11.5	7.17		5		
36 gal/bbl		FRESH WATER								
148.73 lbm/bbl		BARITE, BULK (100003681)								

HALLIBURTON

Cementing Job Summary

Fluid #	Stage Type	Fluid Name	Qty	Qty UoM	Mixing Density lbm/gal	Yield ft ³ /sack	Mix Fluid Gal	Rate bbl/min	Total Mix Fluid Gal
2	Lead Cement	ECONOCEM (TM) SYSTEM	545	sack	12.5	1.91		7	10.34
10.34 Gal		FRESH WATER							
Fluid #	Stage Type	Fluid Name	Qty	Qty UoM	Mixing Density lbm/gal	Yield ft ³ /sack	Mix Fluid Gal	Rate bbl/min	Total Mix Fluid Gal
3	Tail Cement	EXPANDACEM (TM) SYSTEM	110	sack	13.5	1.81		6	8.52
8.52 Gal		FRESH WATER							
Fluid #	Stage Type	Fluid Name	Qty	Qty UoM	Mixing Density lbm/gal	Yield ft ³ /sack	Mix Fluid Gal	Rate bbl/min	Total Mix Fluid Gal
4	Displacement	Displacement	280	bbl	10			8	
Cement Left in Pipe		Amount	42 ft		Reason		Shoe Joint		
Comment									

1.3 Planned Pumping Schedule

Stage /Plug #	Fluid #	Fluid Type	Fluid Name	Surface Density lbm/gal	Avg Rate bbl/min	Surface Volume	Downhole Volume
1	1	Spacer	TunedSpacer III	11.50	5.00	30.0 bbl	30.0 bbl
1	5	Cement Slurry	Lead Cement	12.50	7.00	545.0 sacks	545.0 sacks
1	3	Spacer	Tail Cement	13.50	6.00	110.0 sacks	110.0 sacks

1.4 Job Event Log**HALLIBURTON**GREAT WESTERN OIL & GAS LLC
GREAT WESTERN BRUEGMAN SOUTH 34-021HN
GREAT WESTERN BRUEGMAN SOUTH 34-021HN**1.6 Job Event Log**

Type	Seq. No.	Activity	Graph Label	Date	Time	Source	Combined Pump Rate (bbl/min)	Downhole Density (ppg)	Pass-Side Pump Pressure (psi)	Comment
Event	1	Arrive at Location from Service Center	Arrive at Location from Service Center	5/11/2014	00:00:00	USER				ARRIVE AT LOCATION. RIG RUNNING CASING. APPROX 15 JOINTS LEFT. PERFORM SITE ASSESSMENT.
Event	2	Rig-up Lines	Rig-up Lines	5/11/2014	04:00:00	USER				CASING ON BOTTOM AT 0400. PERFORM RIG UP SAFETY MEETING WITH CREW.
Event	3	Test Lines	Test Lines	5/11/2014	07:46:05	COM4	0.00	8.44	5767.00	PRESSURE TEST LINES TO 5000 PSI.
Event	4	Pump Spacer 1	Pump Spacer 1	5/11/2014	07:48:53	COM4	2.00	11.45	114.00	PUMP 30 BBLS TUNED SPACER MIXED AT 11.5 PPG USING RIG WATER.
Event	5	Pump Lead Cement	Pump Lead Cement	5/11/2014	07:59:22	COM4	5.30	12.44	285.00	PUMP 185 BBLS ECONOCEM MIXED AT 12.5 PPG (545 SKS / 1.91 YIELD / 10.34 GAL-SACK)
Event	6	Pump Tail Cement	Pump Tail Cement	5/11/2014	08:27:40	COM4	2.90	13.58	22.00	PUMP 35 BBLS EXPANDACEM MIXED @ 13.8 PPG (110 SKS / 1.81 YIELD / 8.52 GAL-SACK)
Event	7	Shutdown	Shutdown	5/11/2014	08:37:03	COM4	2.50	13.59	10.00	
Event	8	Drop Top Plug	Drop Top Plug	5/11/2014	08:37:49	COM4	0.00	13.53	-32.00	TOP PLUG PRELOADED
Event	9	Pump Displacement	Pump Displacement	5/11/2014	08:38:46	COM4	0.00	13.57	-32.00	GOOD RETURNS THROUGHOUT. SPACER TO SURFACE AT 250 BBLS INTO 280 BBLS TOTAL DISPLACEMENT. APPROX 30 BBLS SPACER TO SURFACE. SIGNS OF CEMENT TO SURFACE WHEN PLUG BUMPED.
Event	10	Bump Plug	Bump Plug	5/11/2014	09:30:00	COM4	3.00	8.20	1032.00	PLUG LANDED AT 1030 PSI.

iCem Service

iCem® Service

HALLIBURTON

GREAT WESTERN OIL & GAS LLC
GREAT WESTERN BRUEGMAN SOUTH 34-021HN
GREAT WESTERN BRUEGMAN SOUTH 34-021HN

										PRESSURE BROUGHT TO 1500 PSI AND HELD 1 MIN.
Event	11	Check Floats	Check Floats	5/11/2014	09:31:44	USER	0.00	8.30	1821.00	FLOATS HELD.
Event	12	Pressure Test	Pressure Test	5/11/2014	09:34:55	USER	0.00	8.26	2365.00	PRESSURE UP ON CASING TO 2500 PSI AND HOLD 30 MIN. FOR CASING PRESSURE TEST.
Event	13	Check Floats	Check Floats	5/11/2014	10:08:12	USER	0.00	8.32	2779.00	FLOATS HELD
Event	14	Rig-Down Equipment	Rig-Down Equipment	5/11/2014	10:17:48	USER				PERFORM RIG DOWN SAFETY MEETING PRIOR TO RIGGING DOWN EQUIPMENT.
Event	15	Depart Location	Depart Location	5/11/2014	11:30:00	USER				JOURNEY MGMT TO LEAVE LOCATION.

