



Precision Directional Services, Inc.

27610 Commerce Oaks Drive
Oak Ridge North, TX 77385

Bruegman South EG 34-021 HN

Scale 5":100' - MD

5/13/2014 11:30 AM

Oper. Company: Great Western Oil and Gas Company

Well: Bruegman South EG 34-021 HN

Field: Niobrara 83'

Rig: Xtreme 17

Well ID: 05-123-38842

Job Number: DL 2200

State: CO

County: Weld County

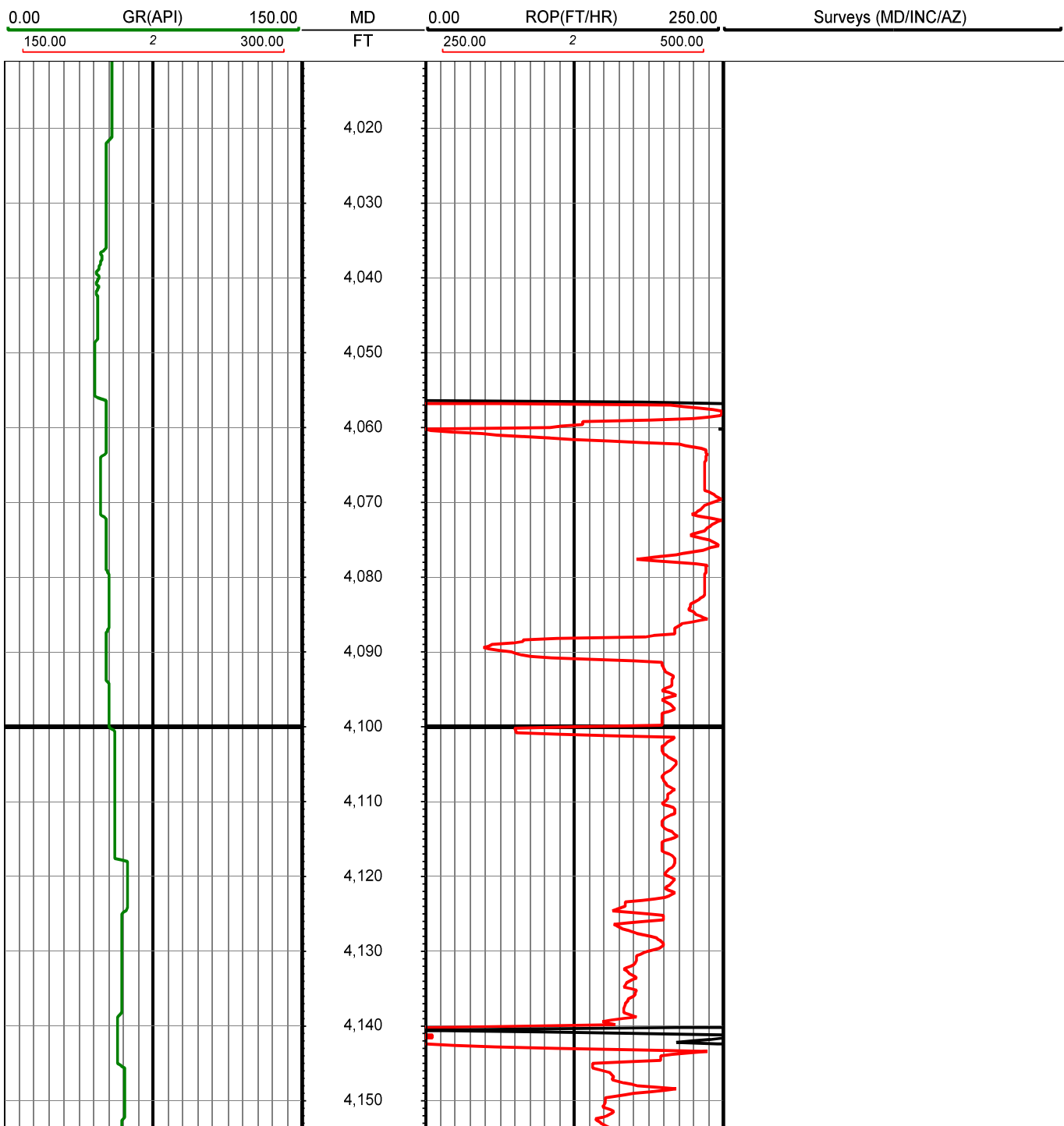
Country: USA

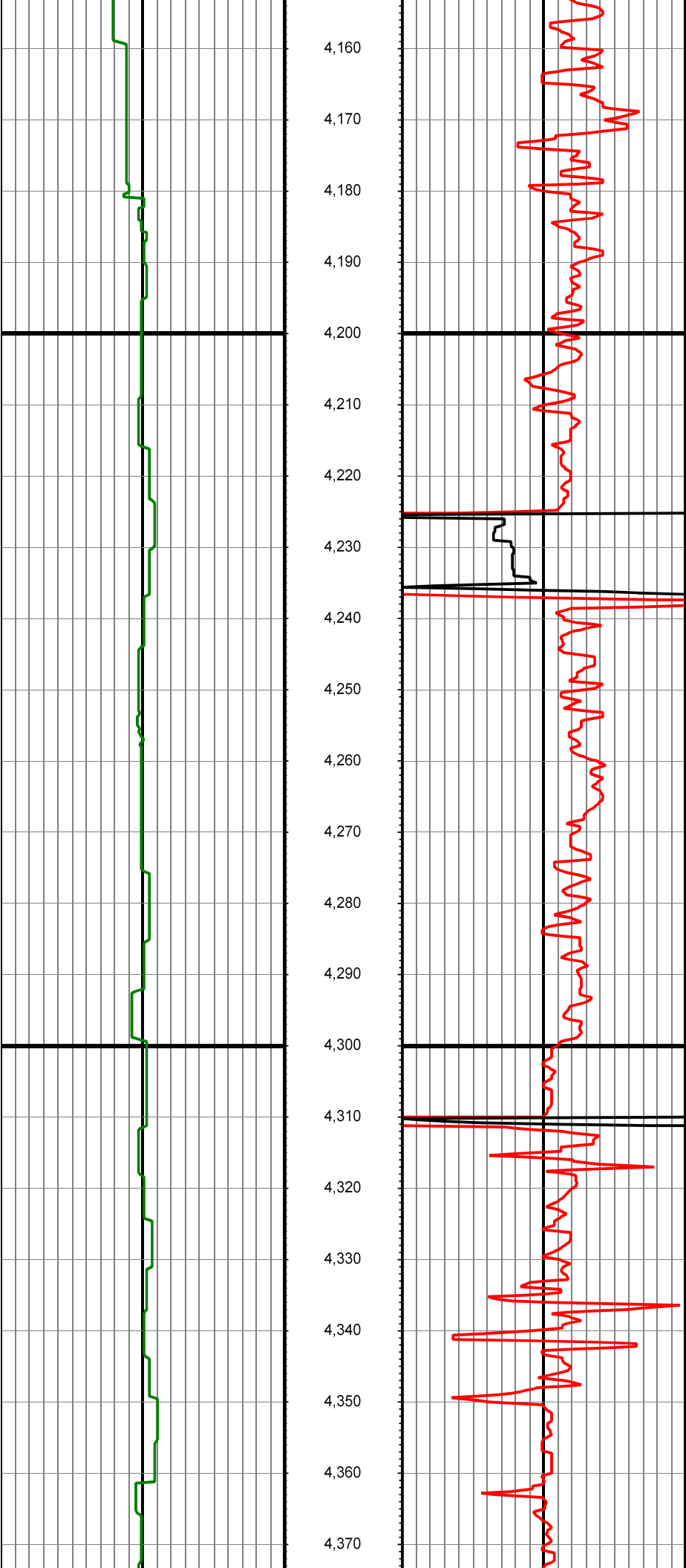
Location: Galeton

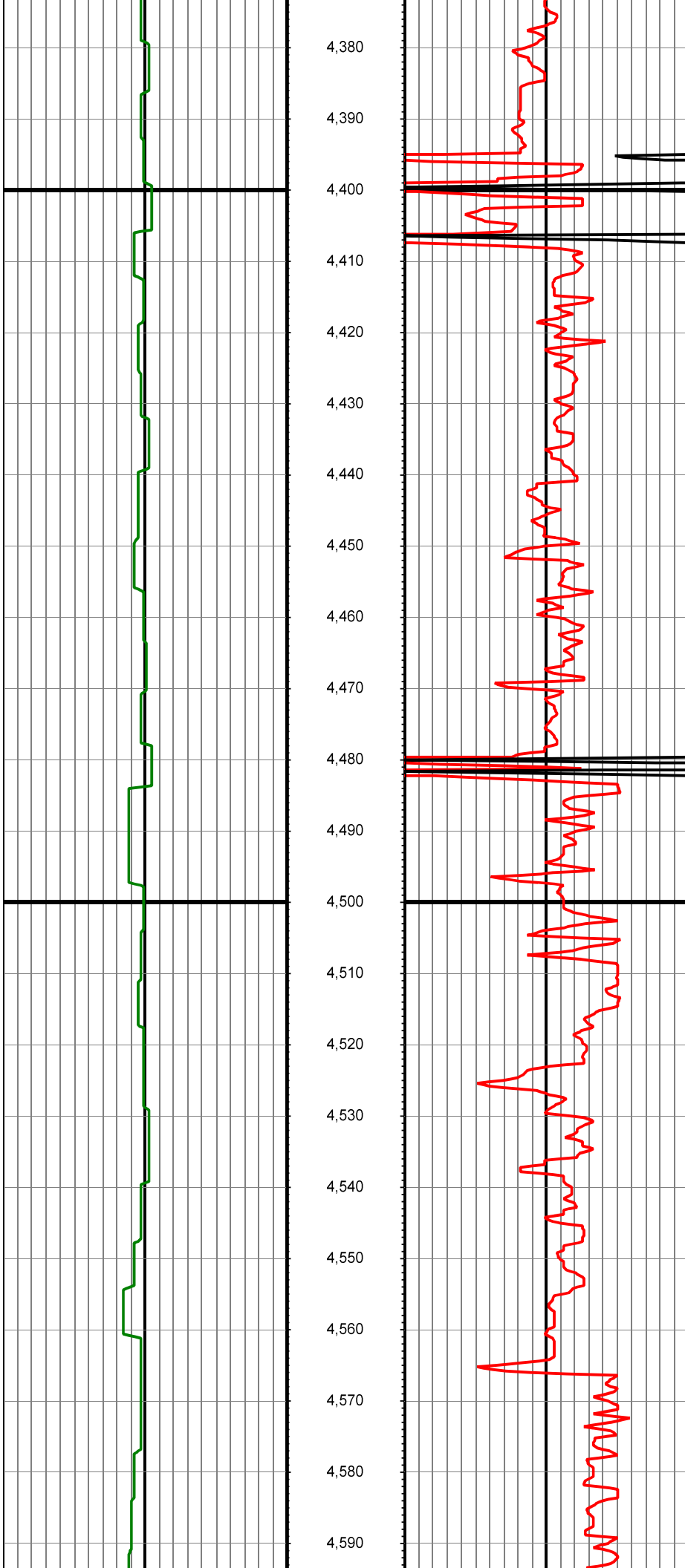
Start Date: 05/08/2014 20:00:00

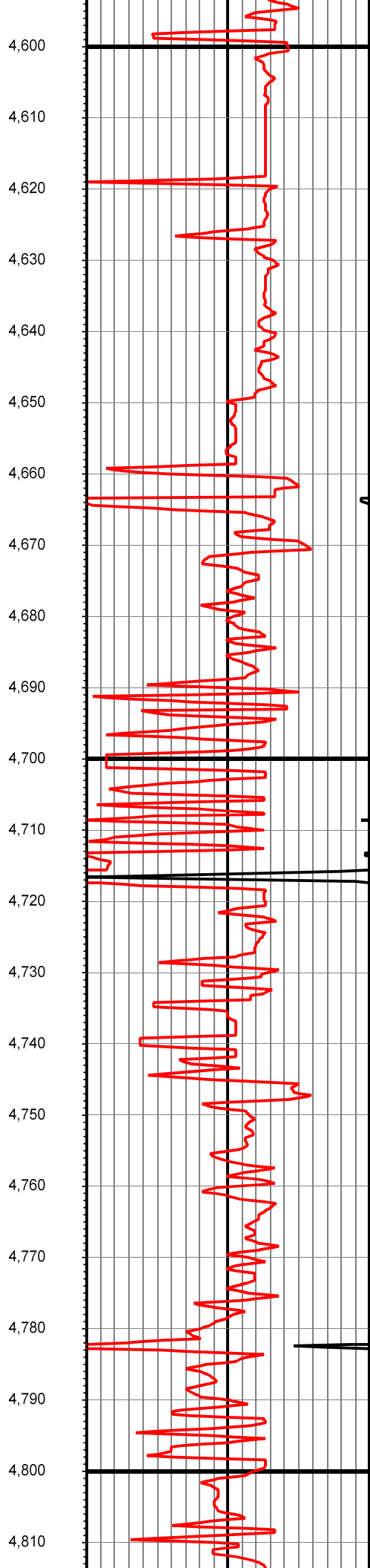
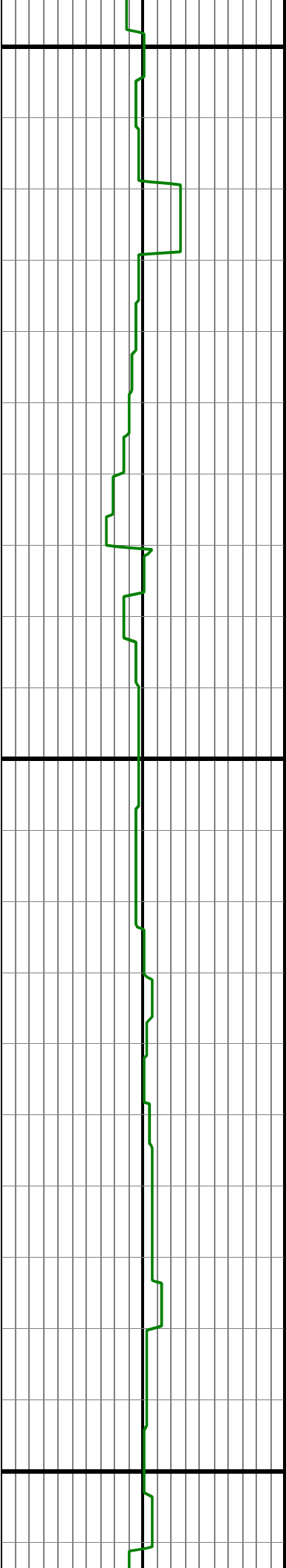
End Date: 05/13/2014 12:00:00

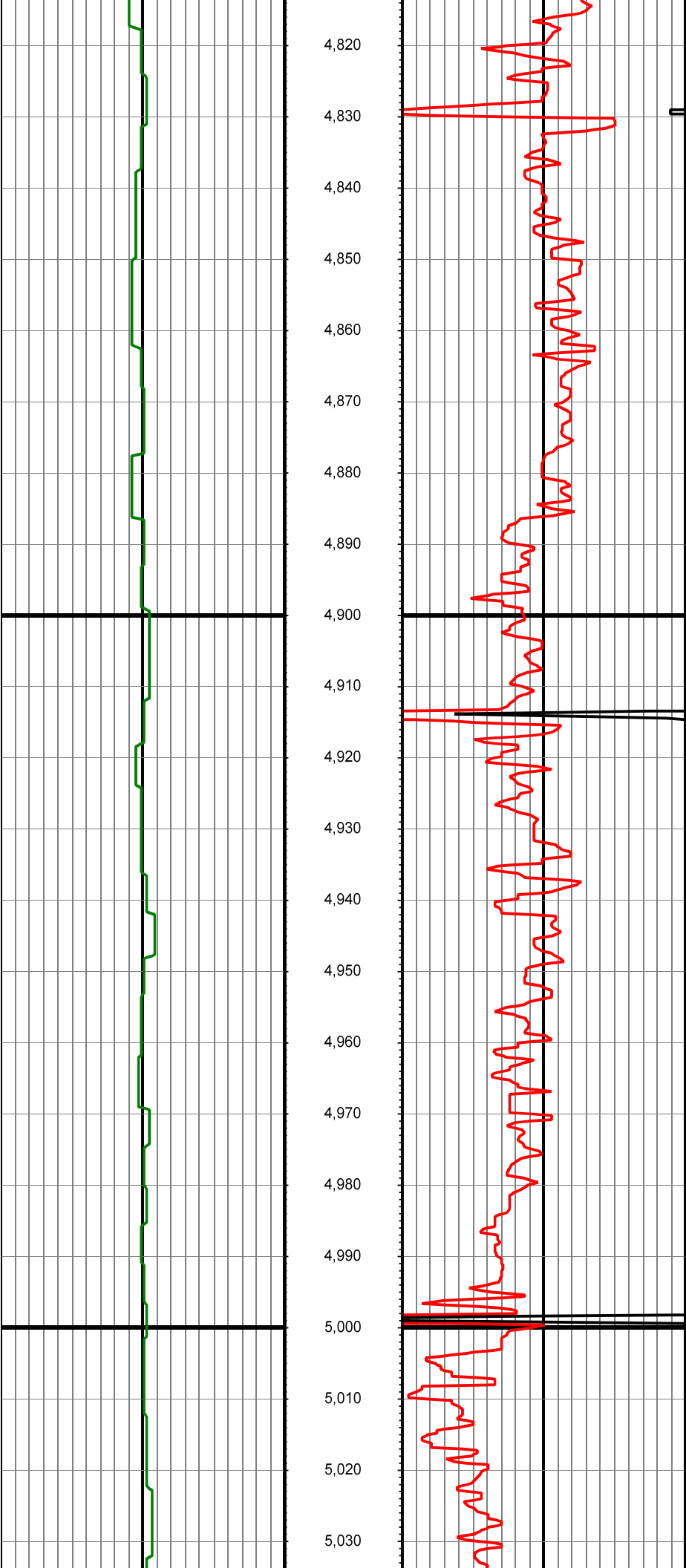
All interpretations are opinions based on inferences from electrical or other measurements and we cannot and do not guarantee the accuracy or correctness of any interpretation, and we shall not except in the case of gross or willful negligence on our part, be liable or responsible for any loss, cost damages or expenses incurred or sustained by anyone resulting from an interpretation made by any of our officers, agents, or employees.

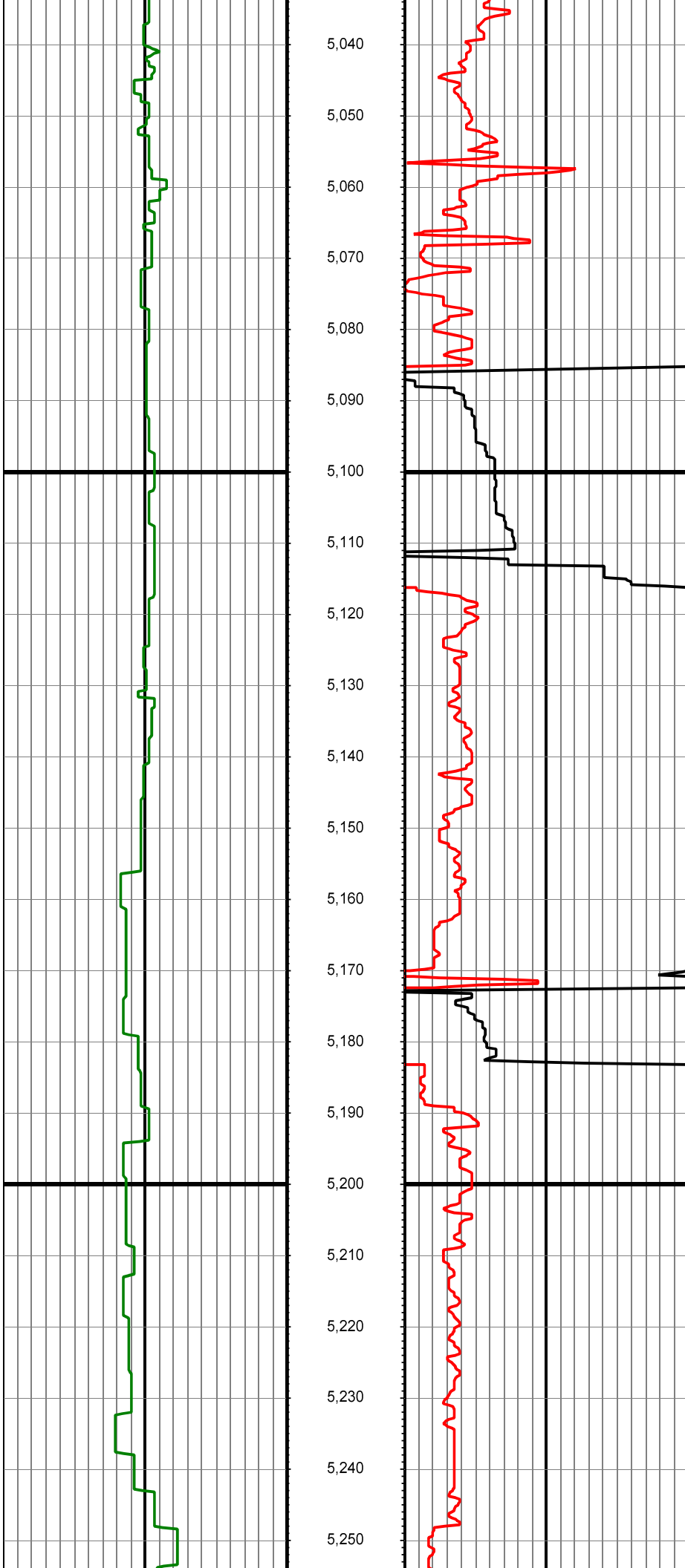


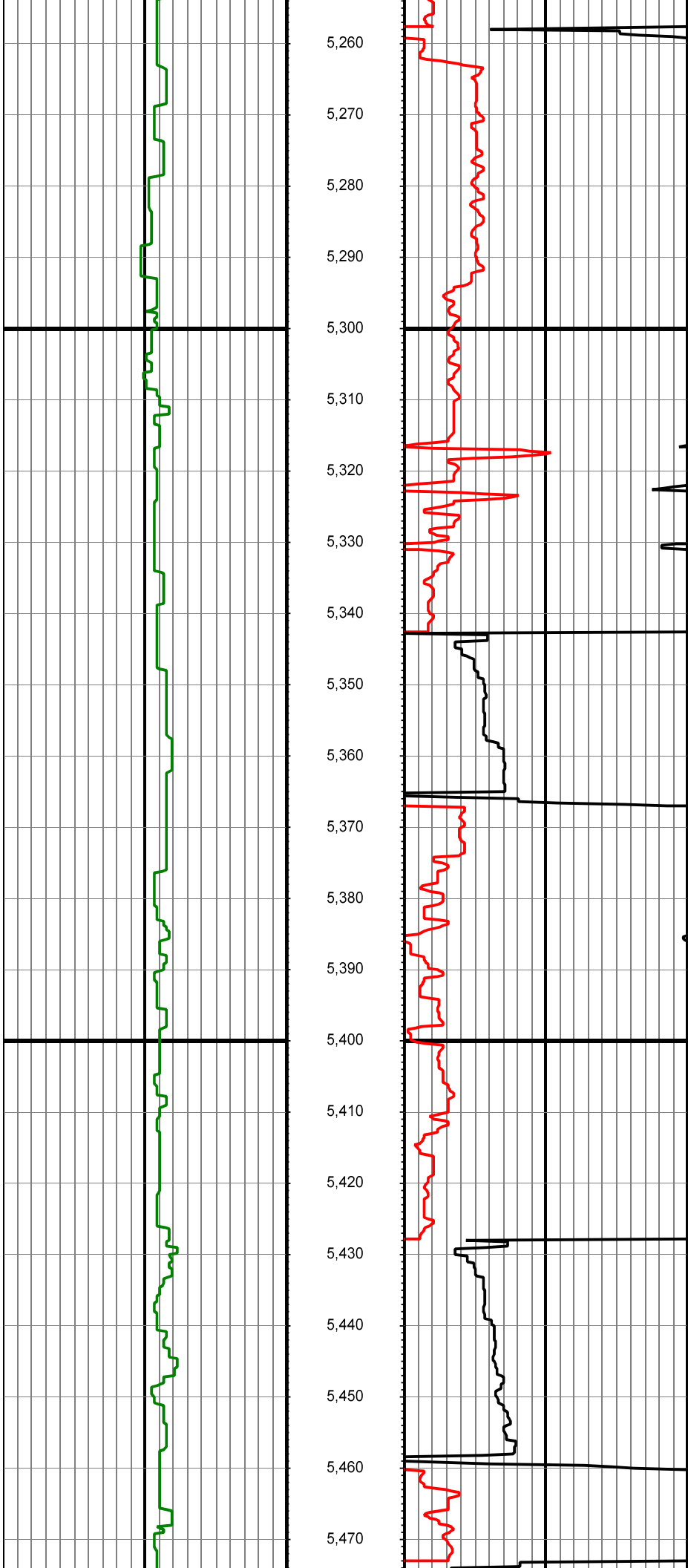


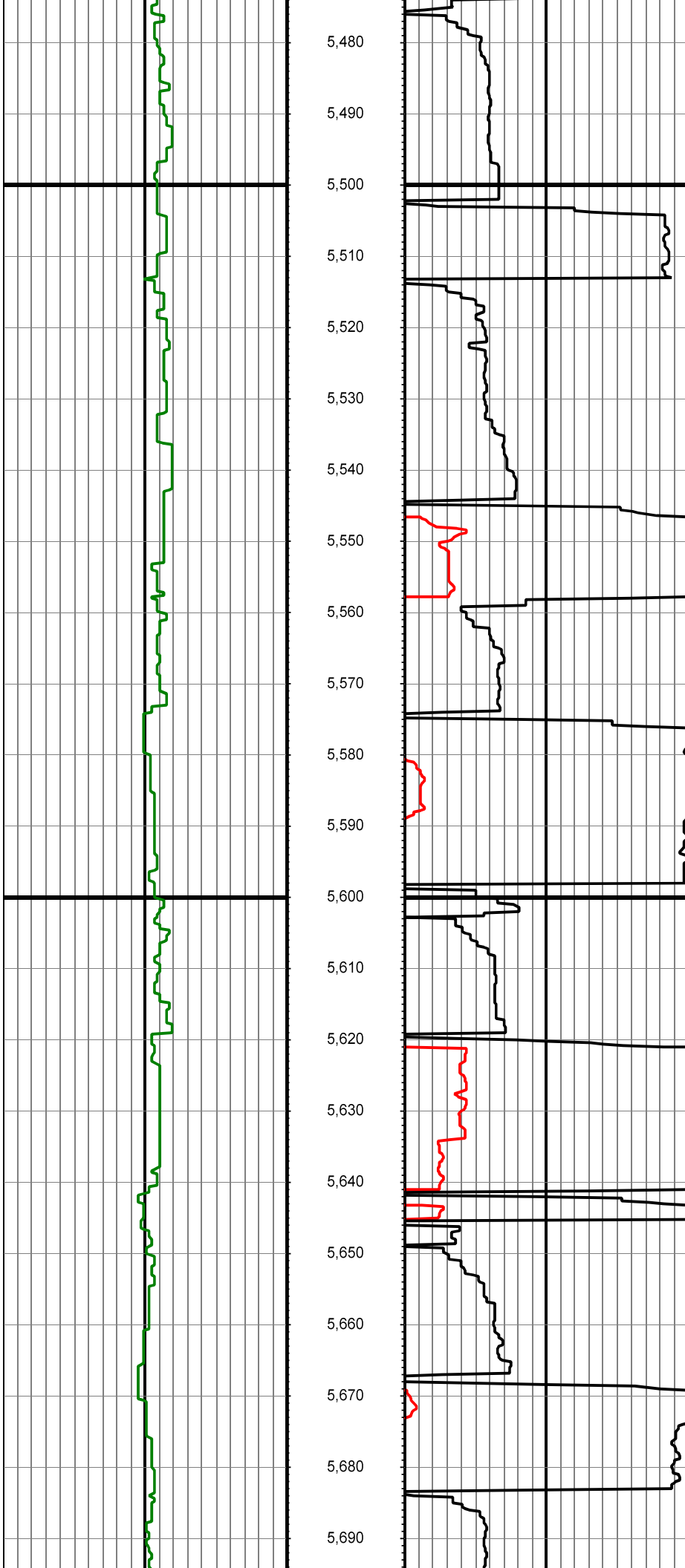


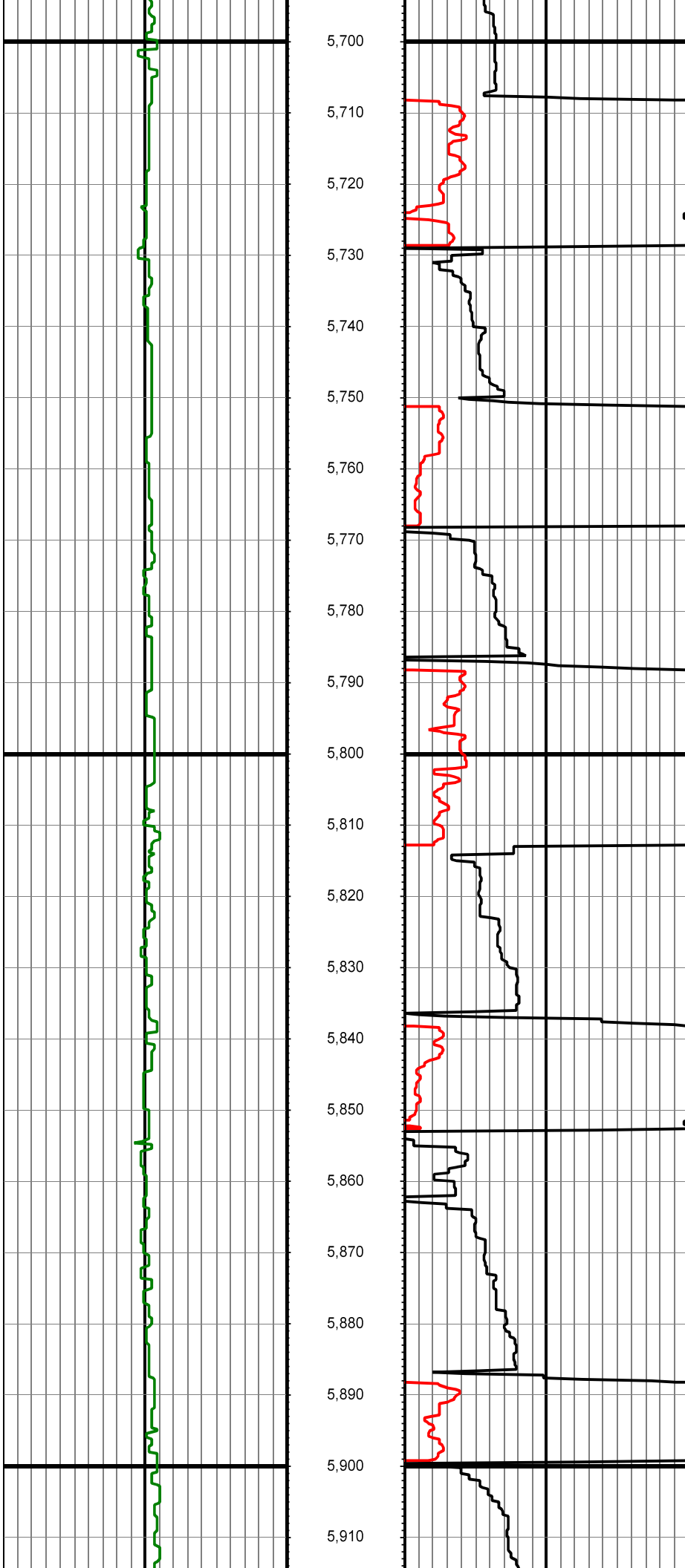


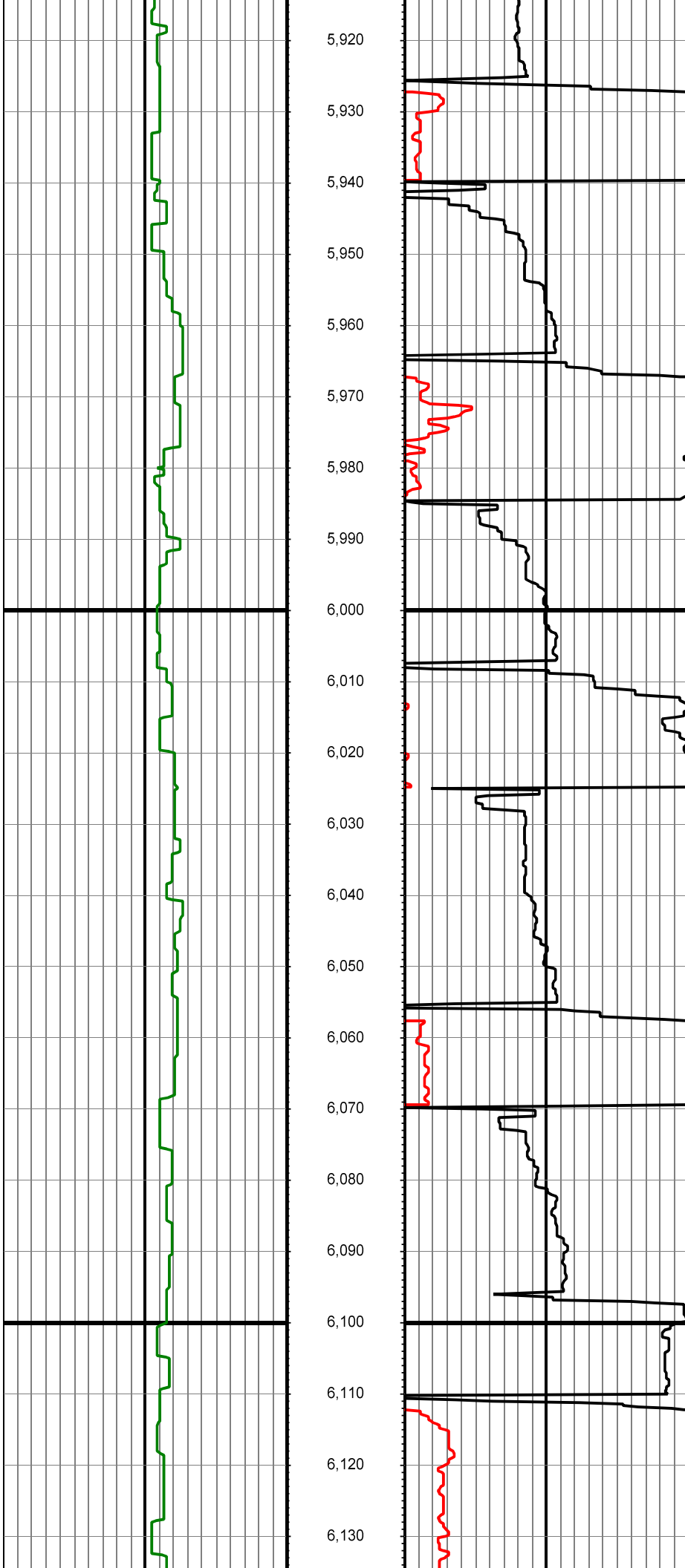


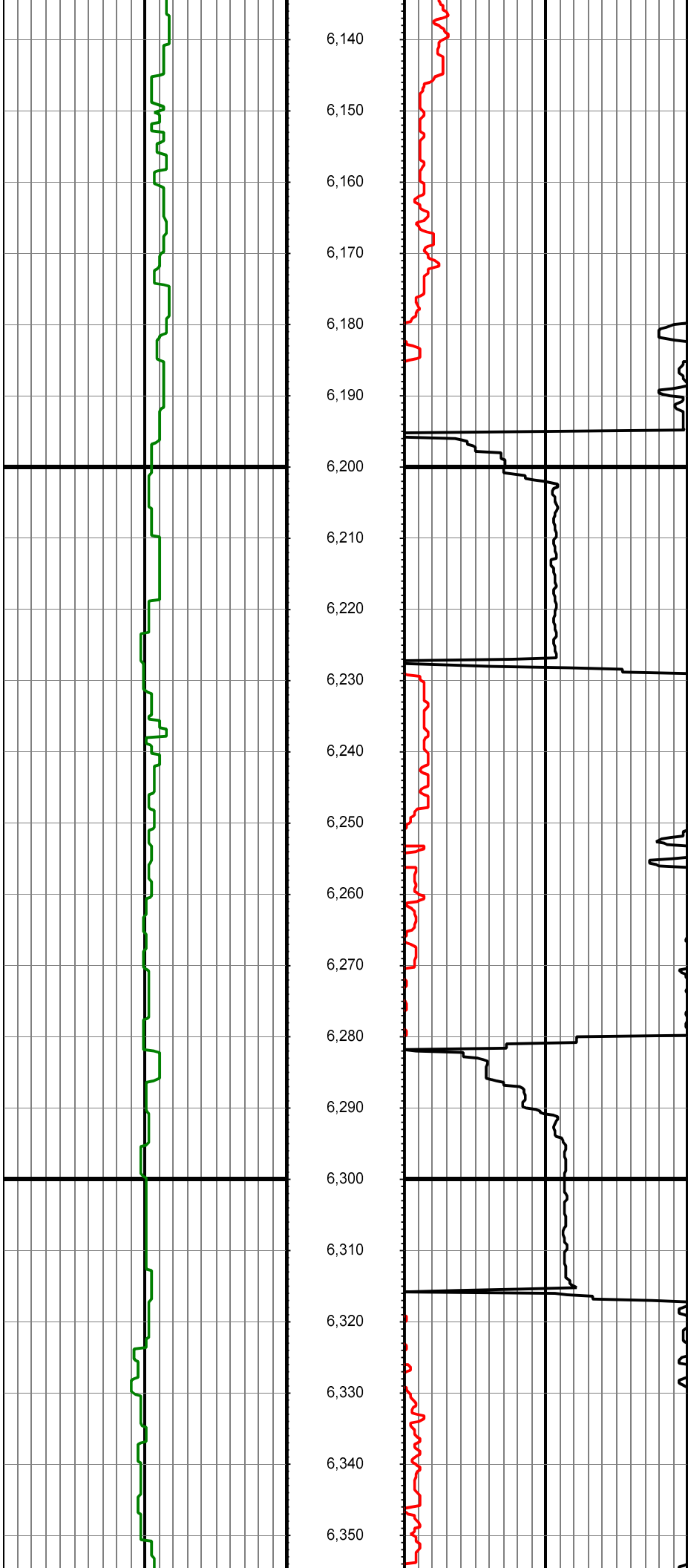


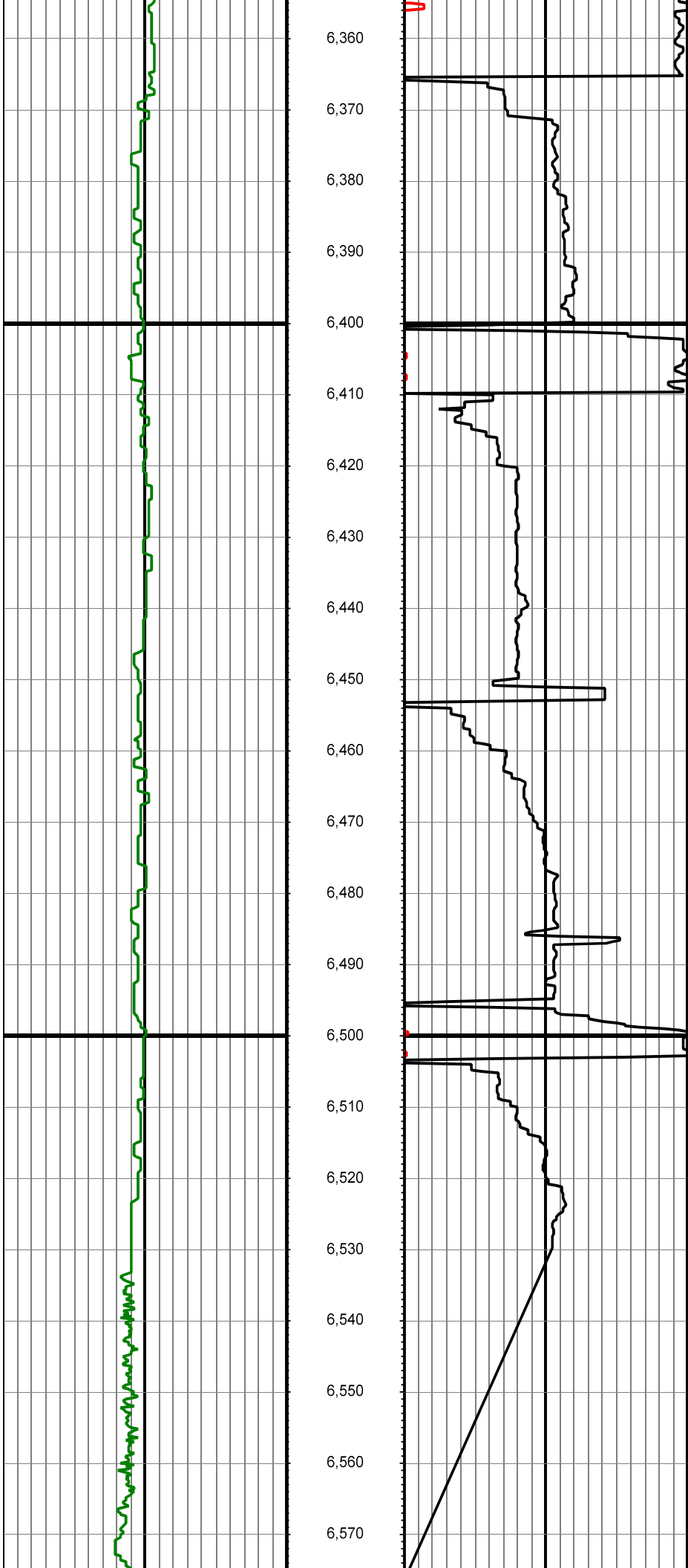


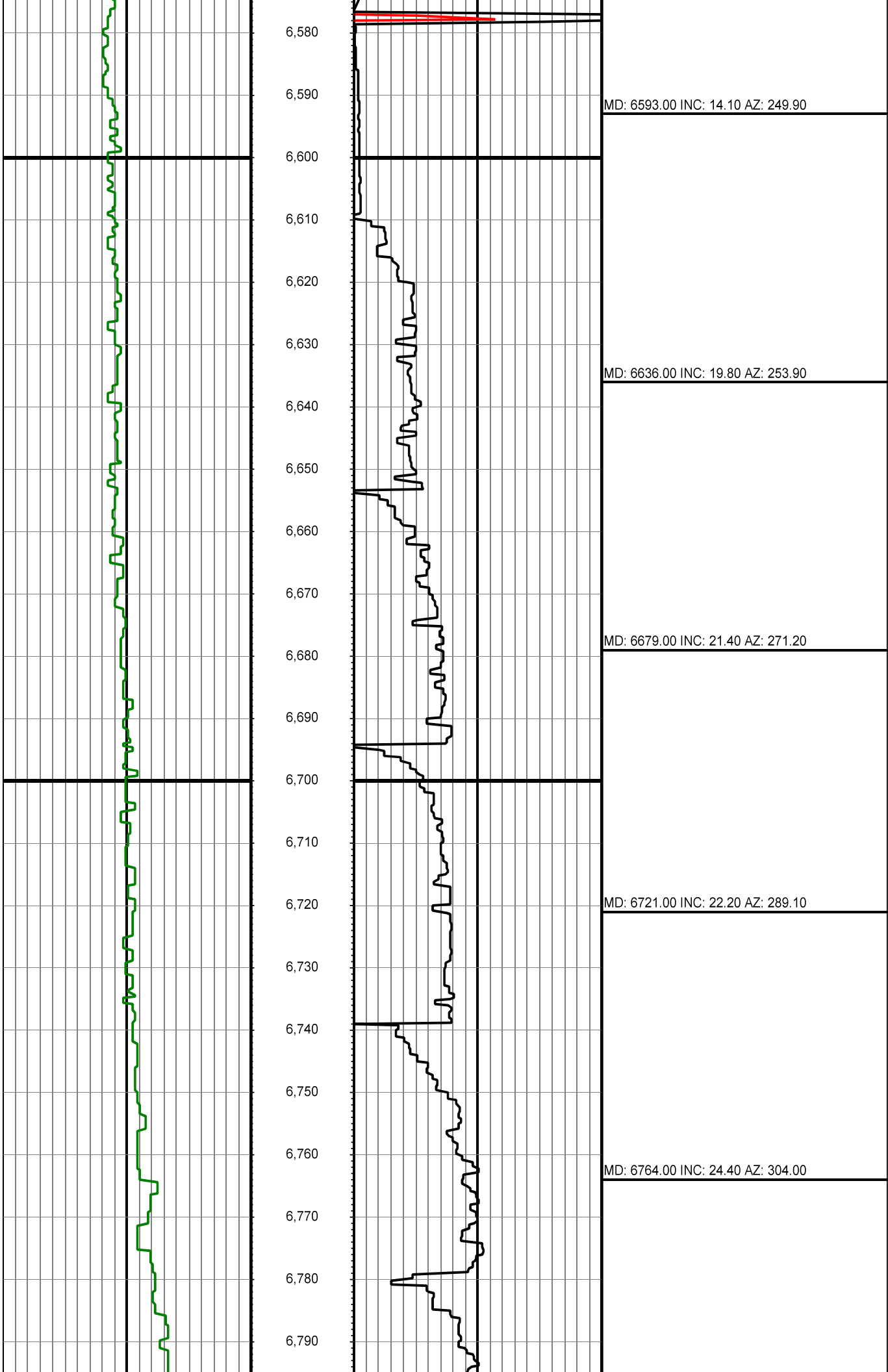


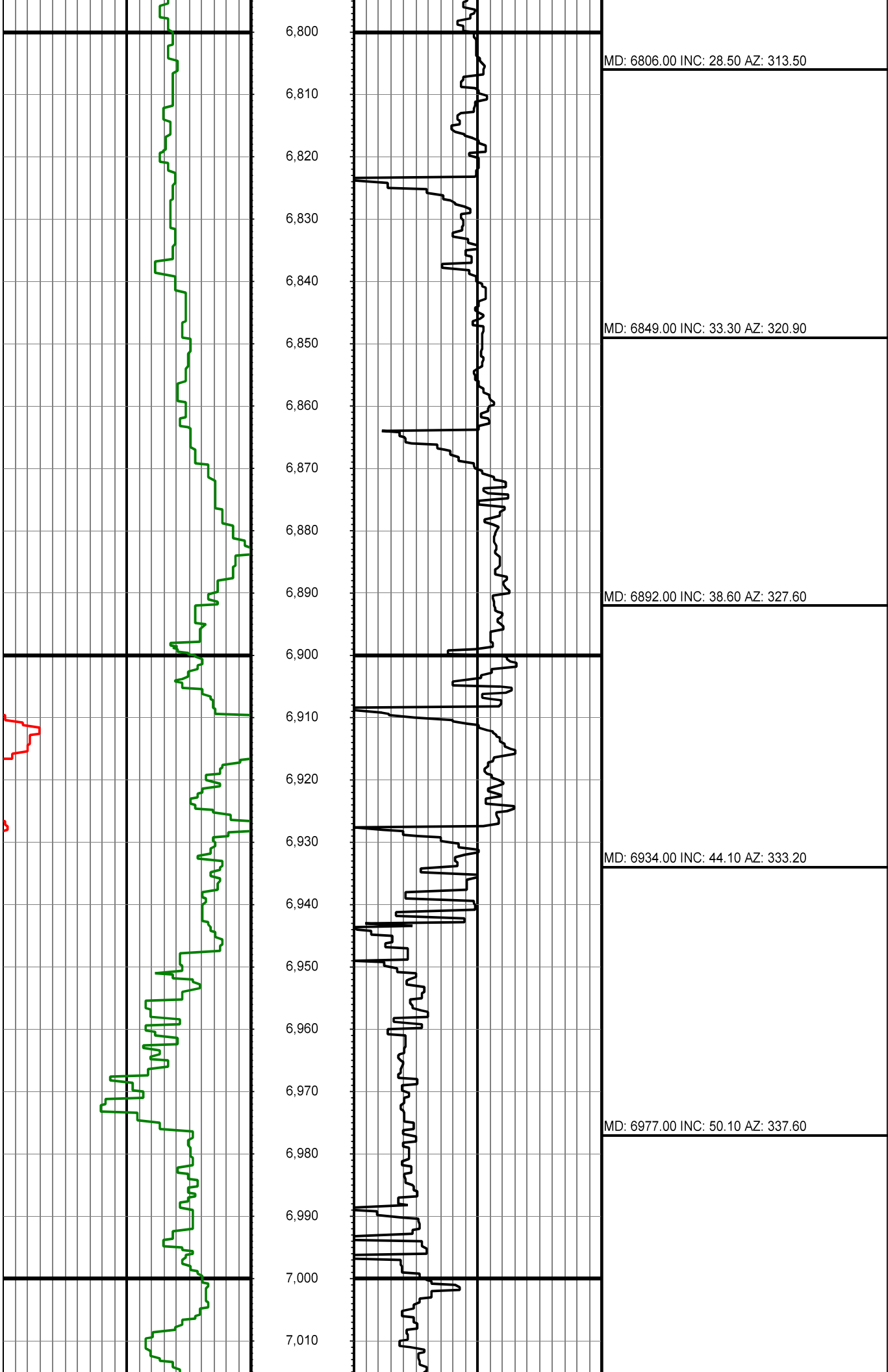


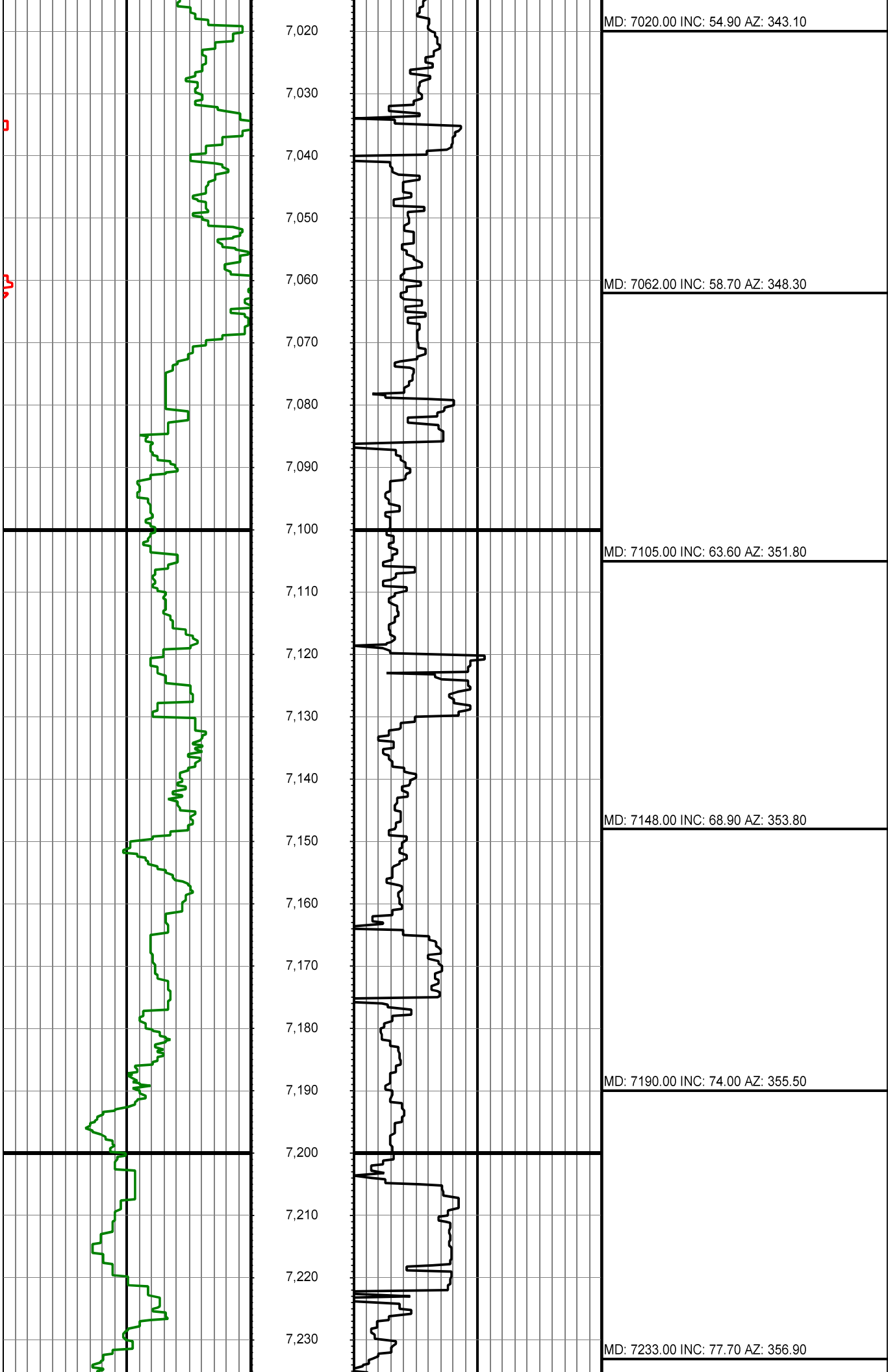


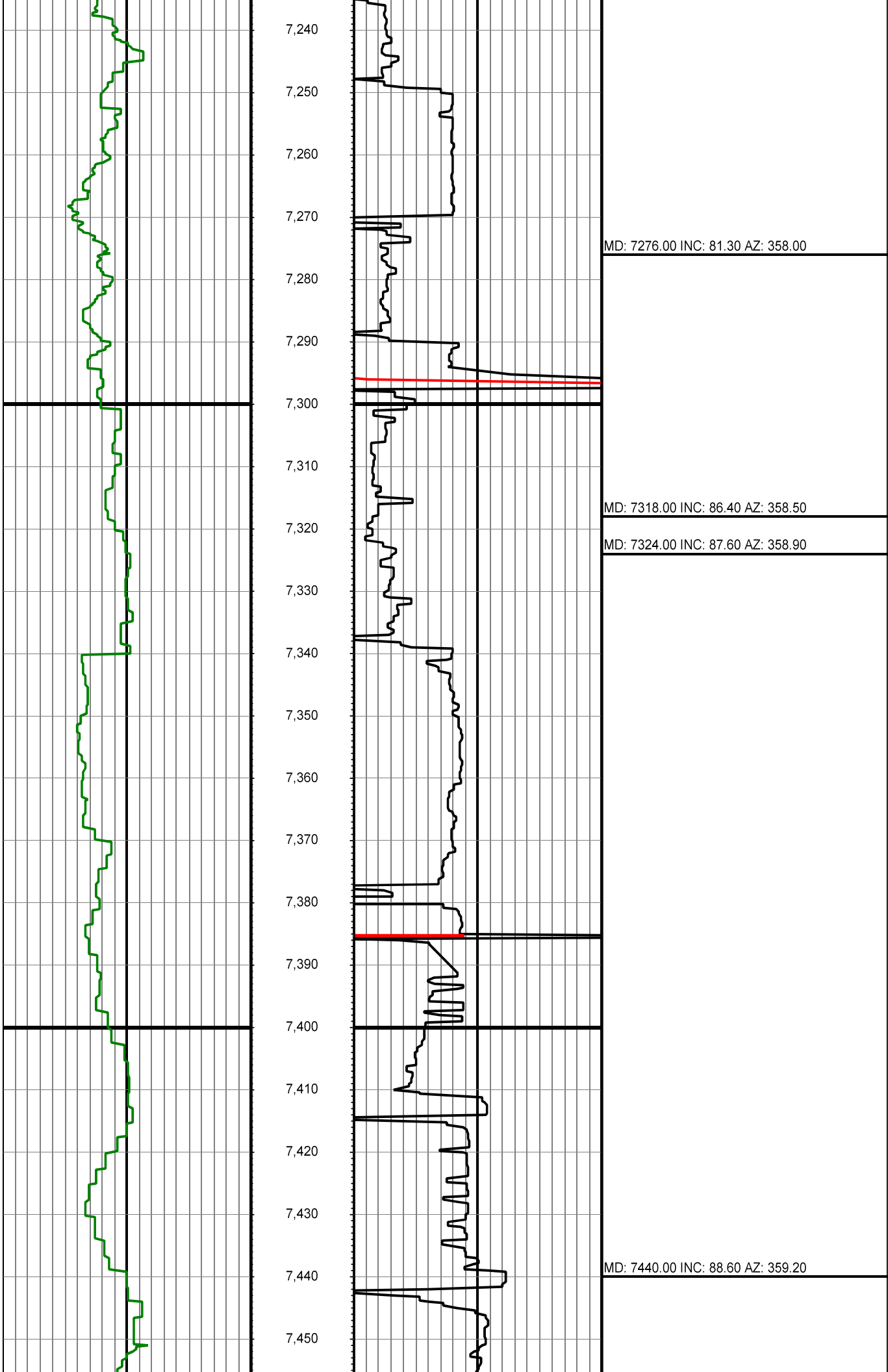


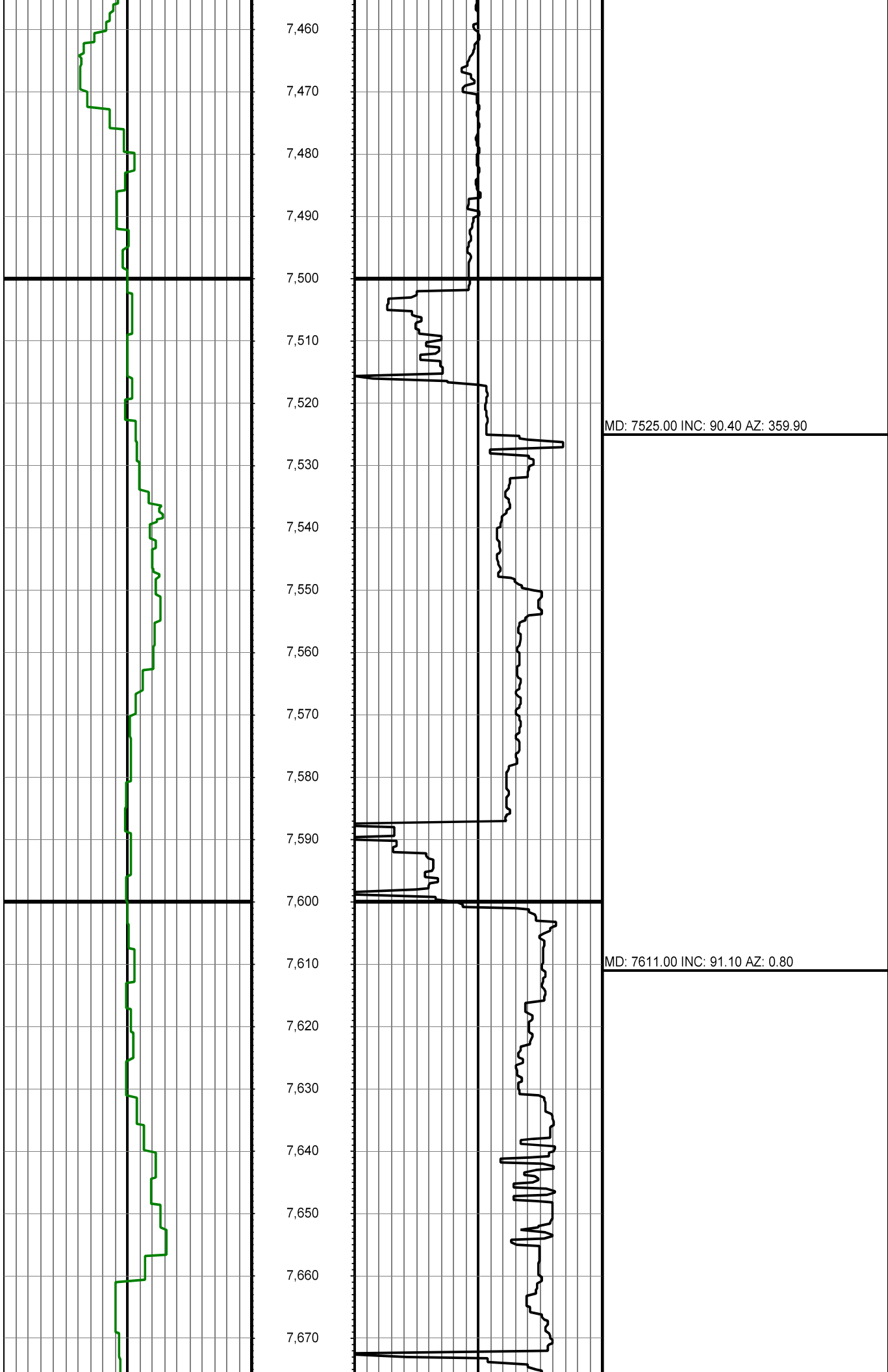


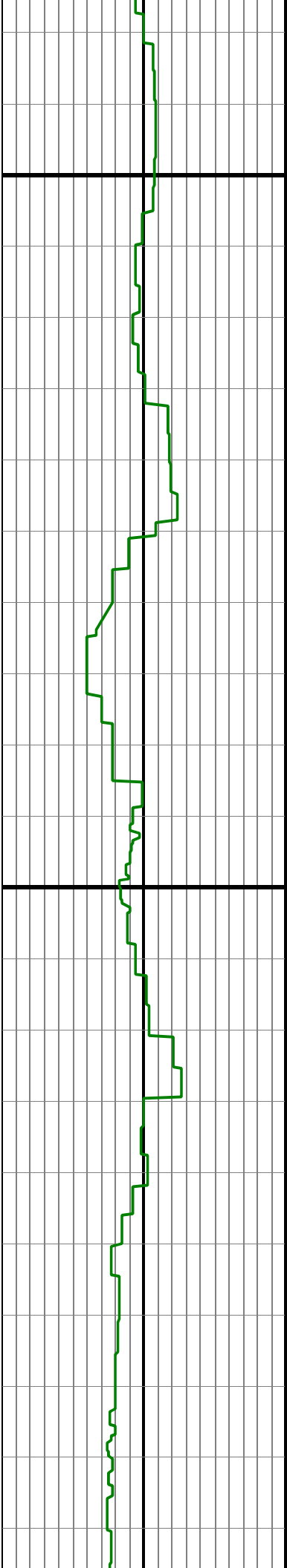












7,680

7,690

7,700

7,710

7,720

7,730

7,740

7,750

7,760

7,770

7,780

7,790

7,800

7,810

7,820

7,830

7,840

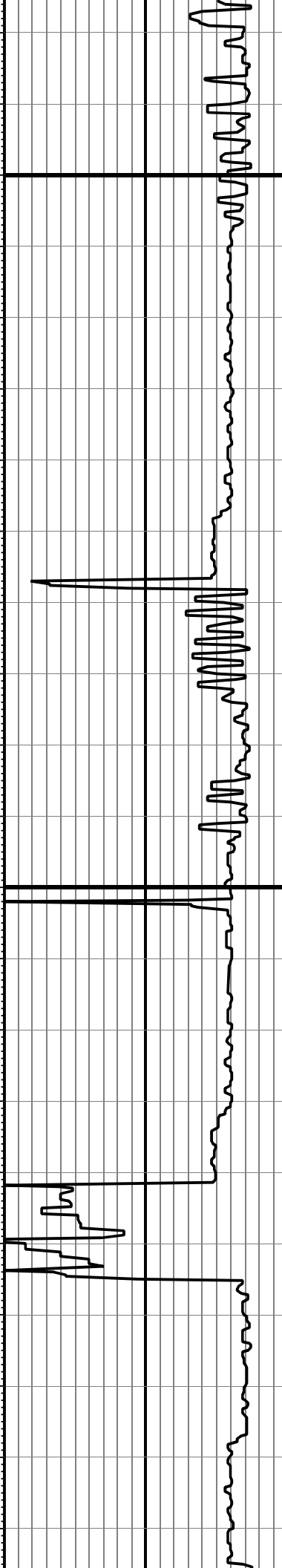
7,850

7,860

7,870

7,880

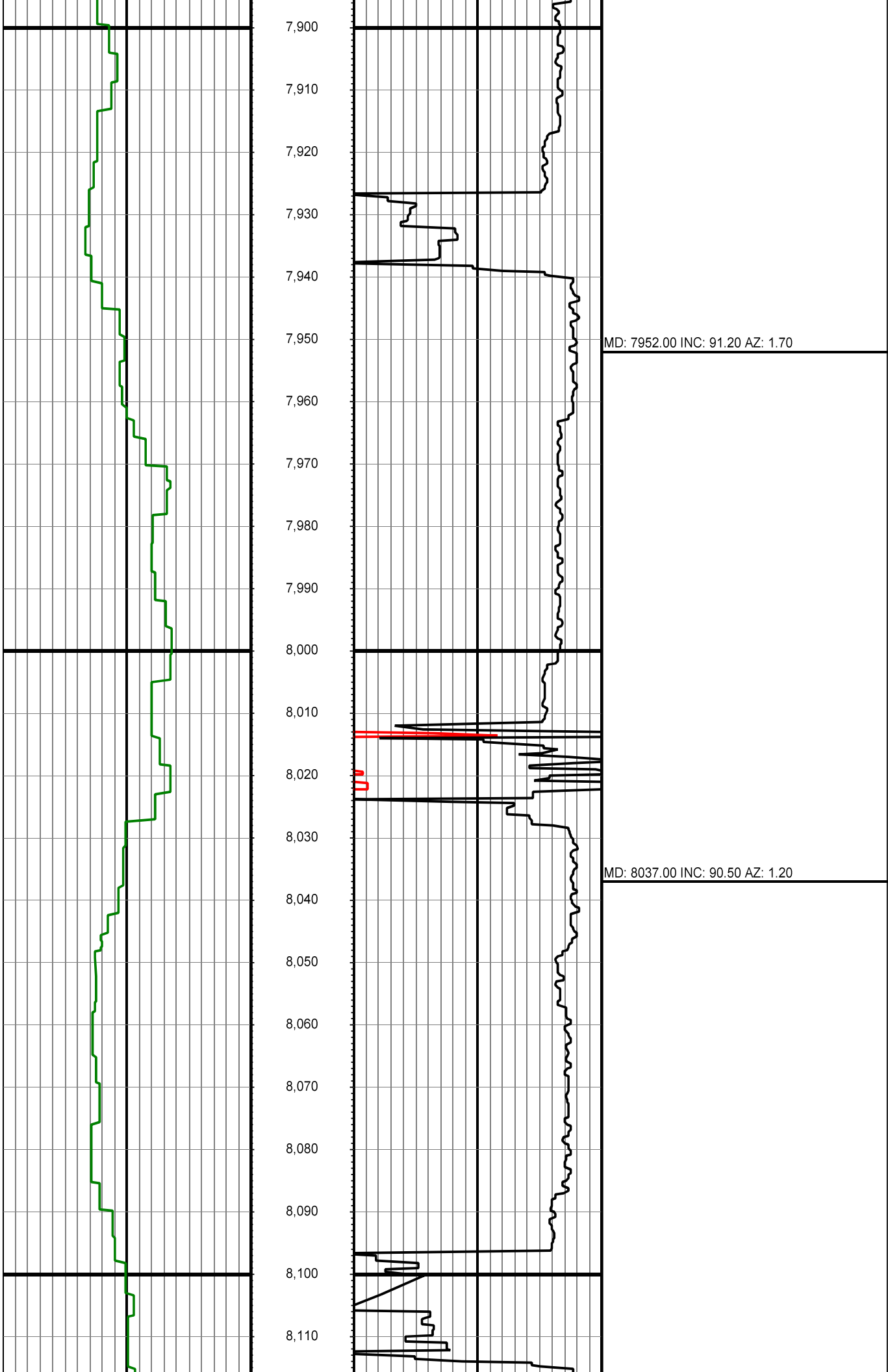
7,890

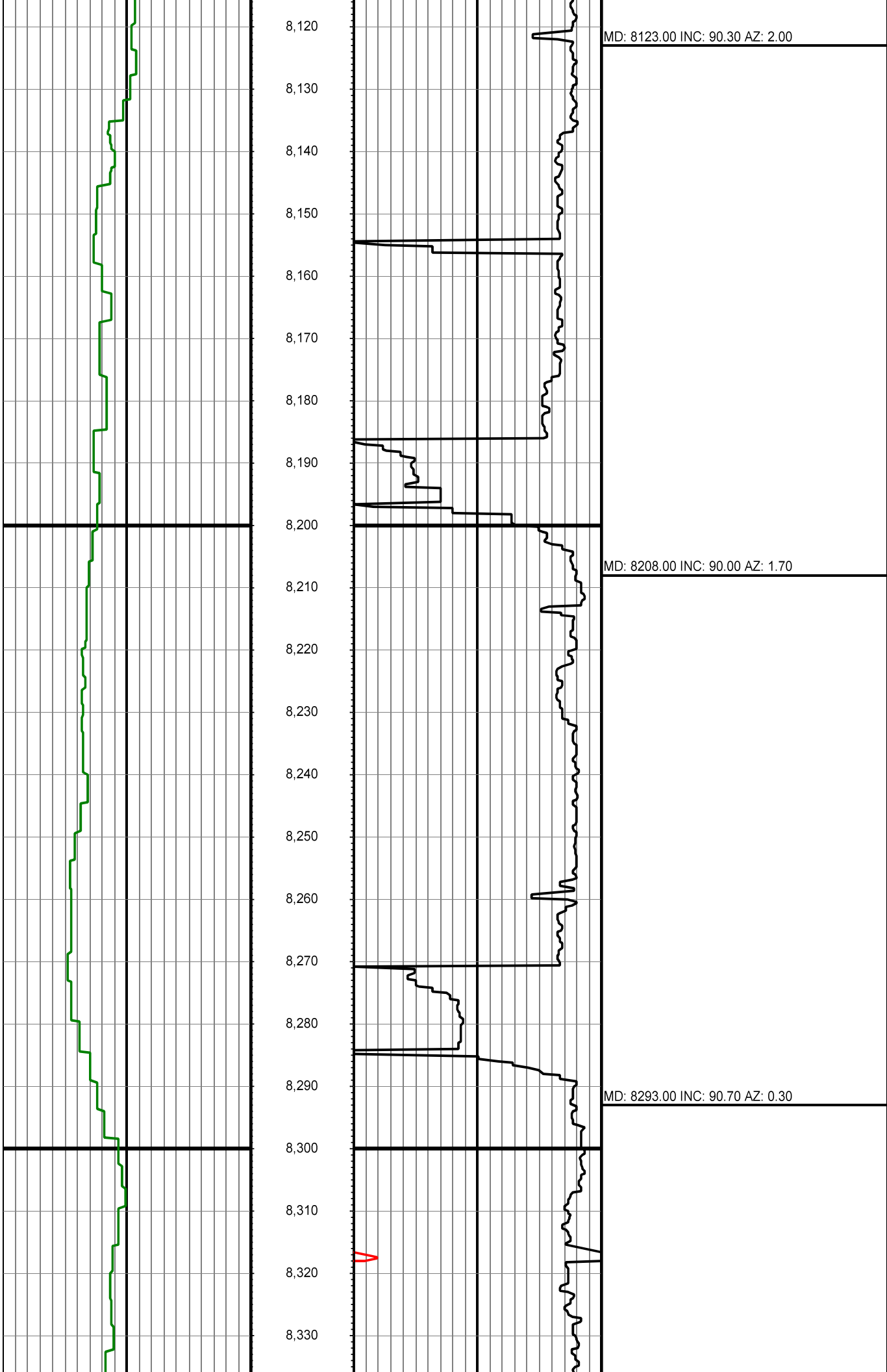


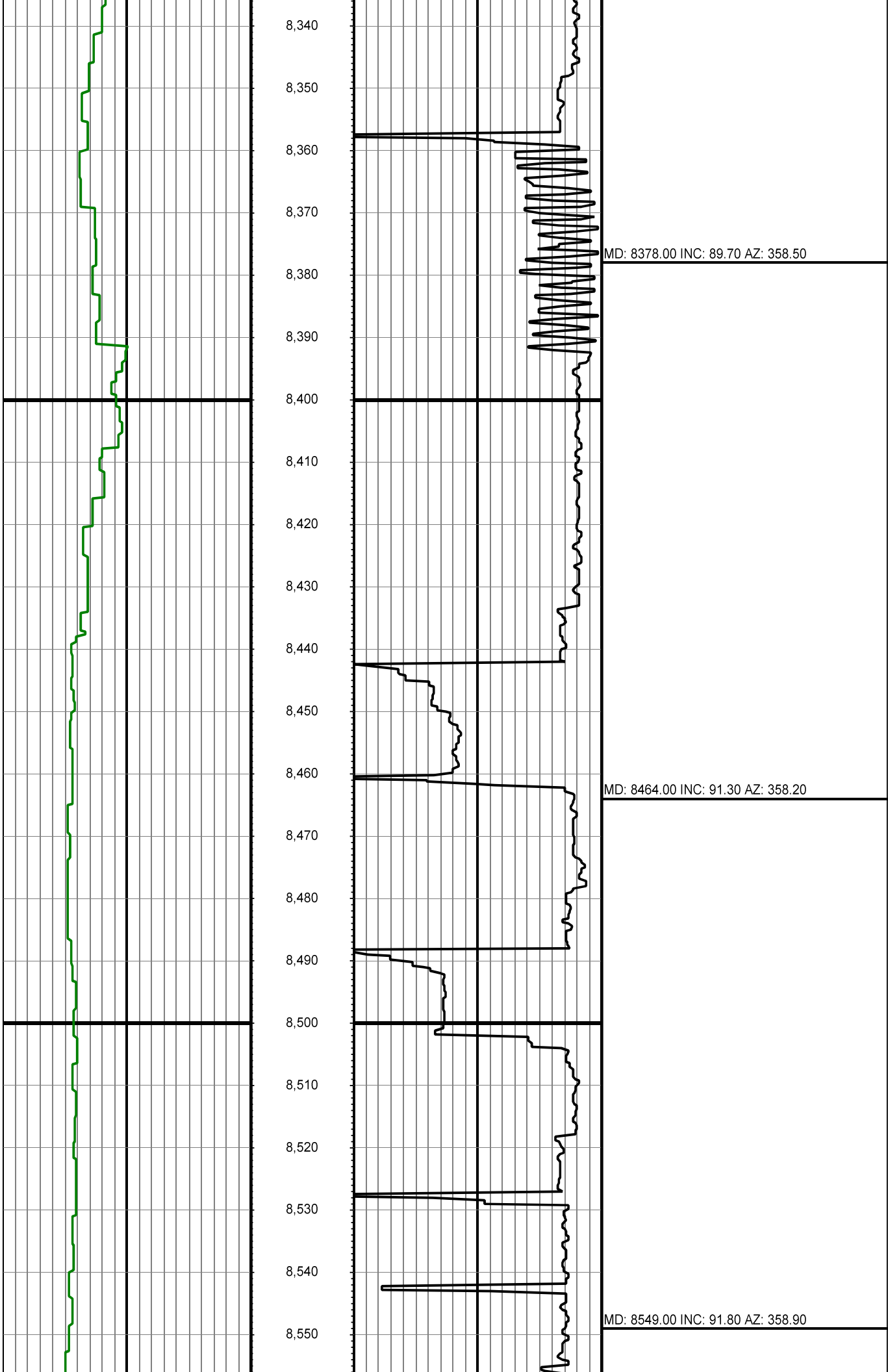
MD: 7696.00 INC: 90.90 AZ: 0.10

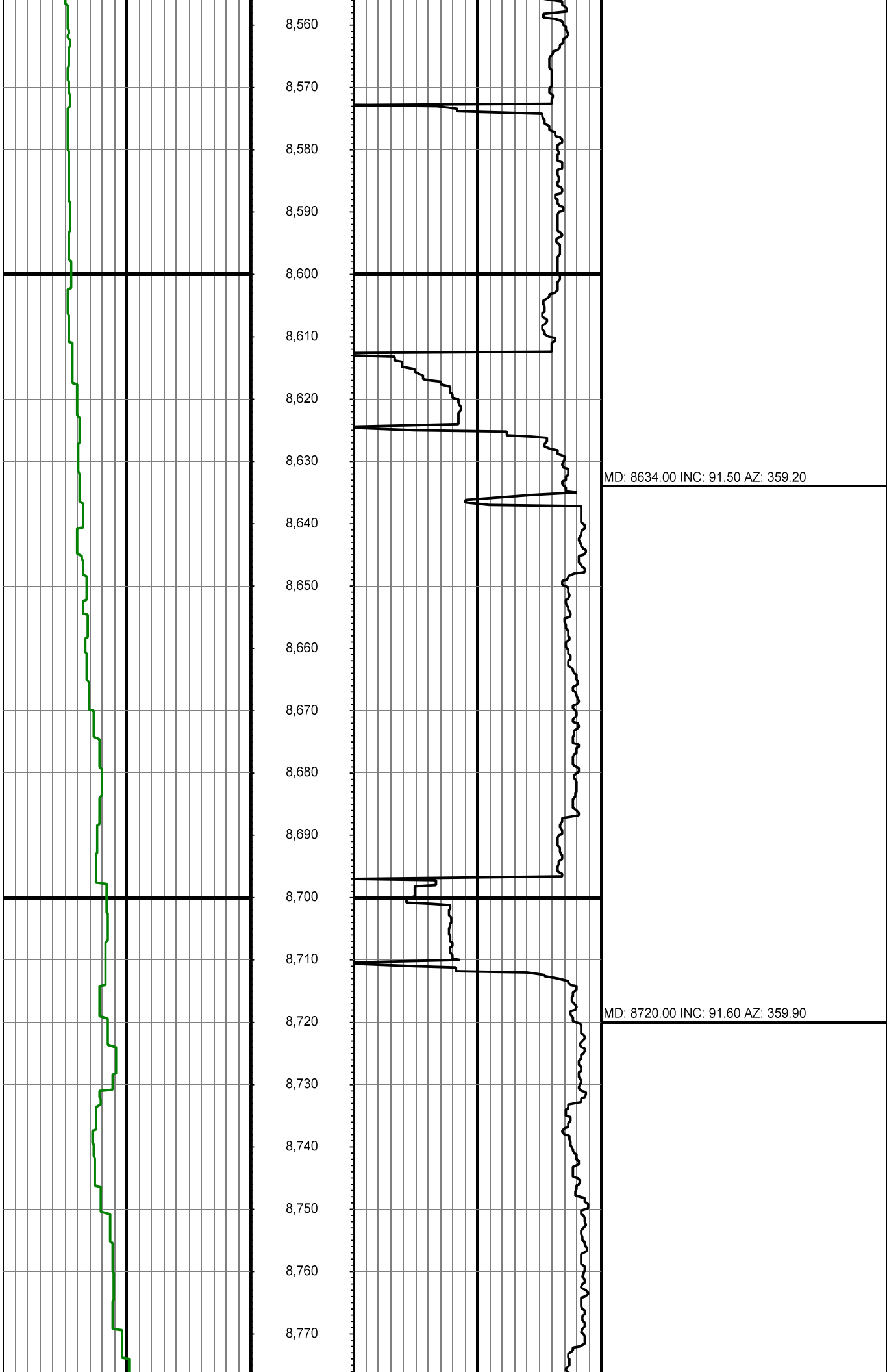
MD: 7781.00 INC: 90.90 AZ: 359.40

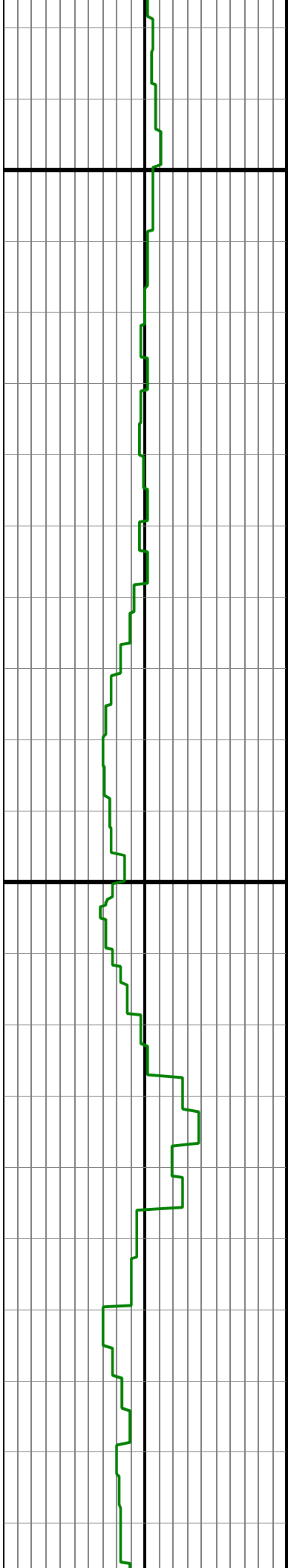
MD: 7867.00 INC: 90.90 AZ: 0.60











8,780

8,790

8,800

8,810

8,820

8,830

8,840

8,850

8,860

8,870

8,880

8,890

8,900

8,910

8,920

8,930

8,940

8,950

8,960

8,970

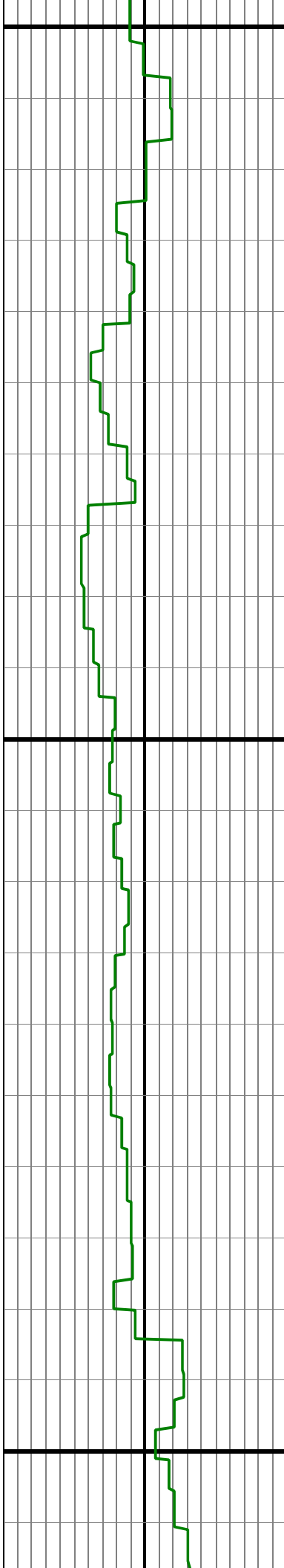
8,980

8,990

MD: 8805.00 INC: 90.20 AZ: 359.60

MD: 8890.00 INC: 90.70 AZ: 358.90

MD: 8975.00 INC: 90.60 AZ: 0.10



9,000

9,010

9,020

9,030

9,040

9,050

9,060

9,070

9,080

9,090

9,100

9,110

9,120

9,130

9,140

9,150

9,160

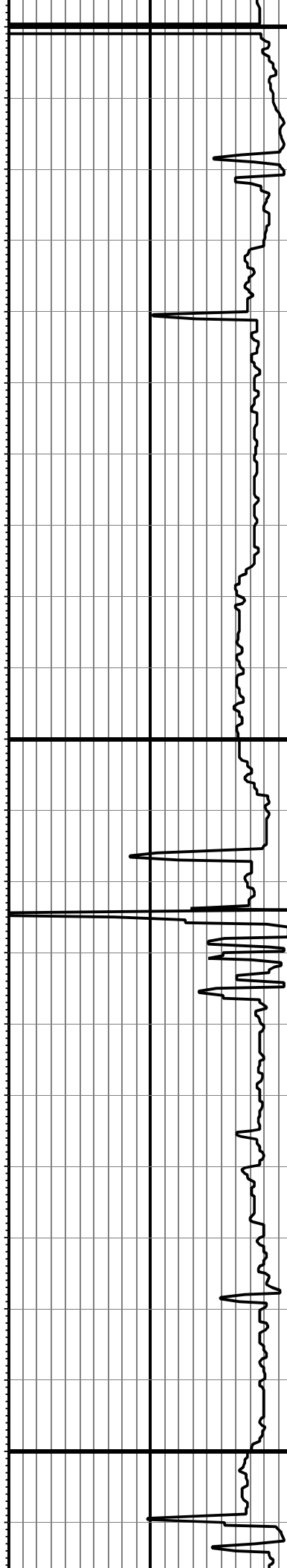
9,170

9,180

9,190

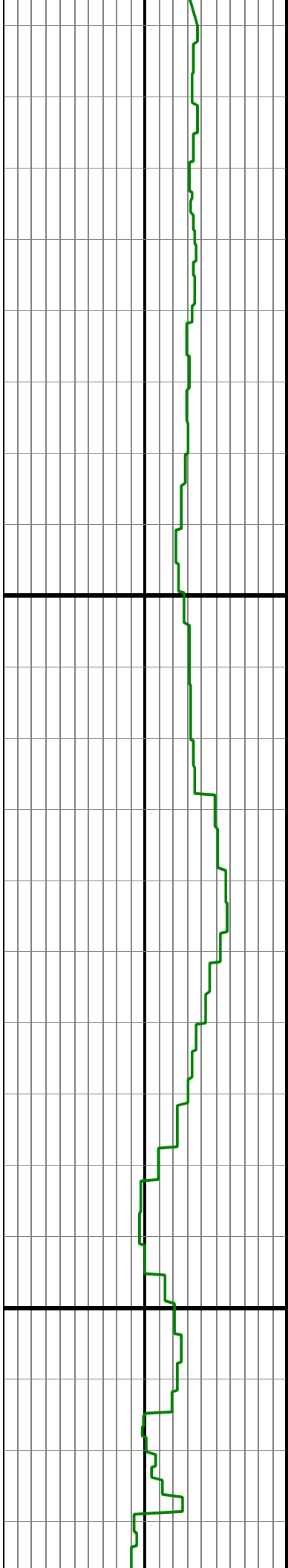
9,200

9,210



MD: 9061.00 INC: 90.70 AZ: 359.80

MD: 9146.00 INC: 90.30 AZ: 359.40



9,220

9,230

9,240

9,250

9,260

9,270

9,280

9,290

9,300

9,310

9,320

9,330

9,340

9,350

9,360

9,370

9,380

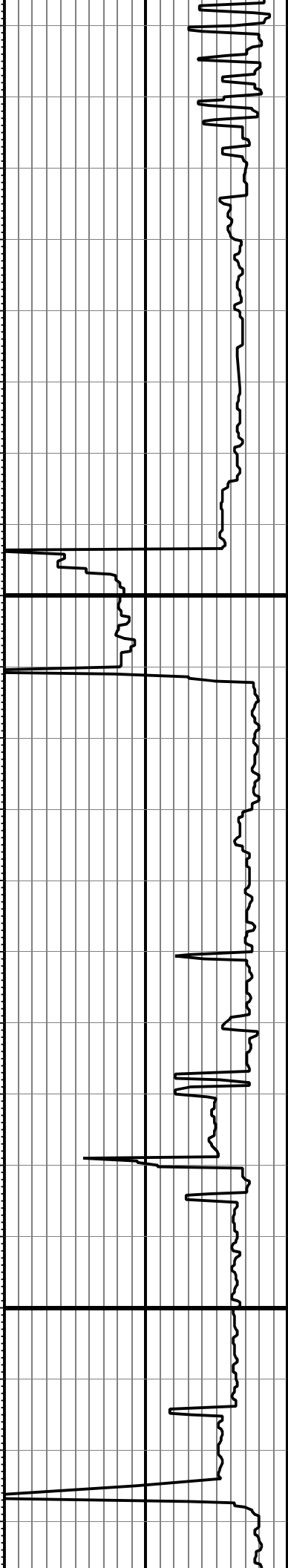
9,390

9,400

9,410

9,420

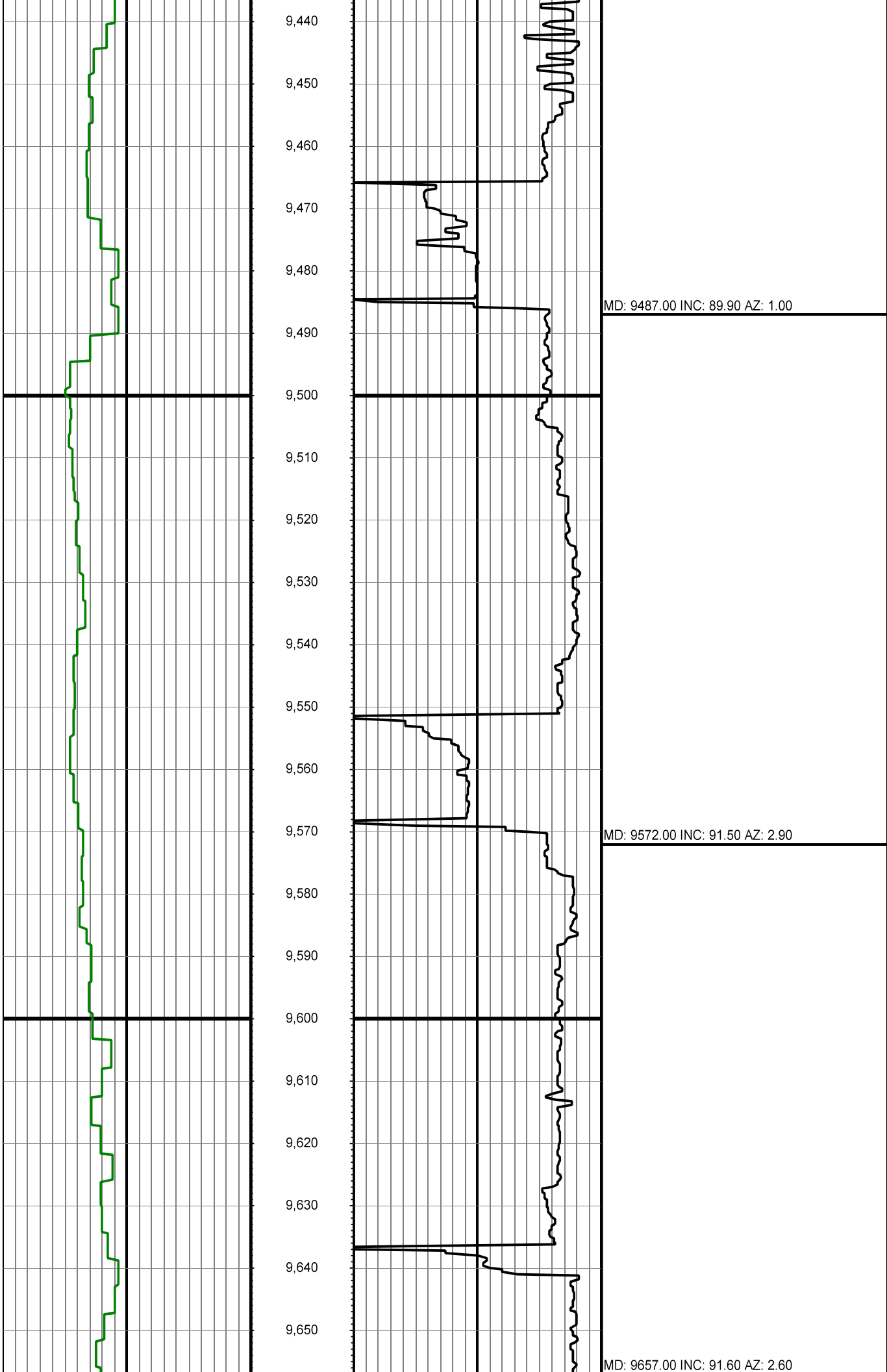
9,430

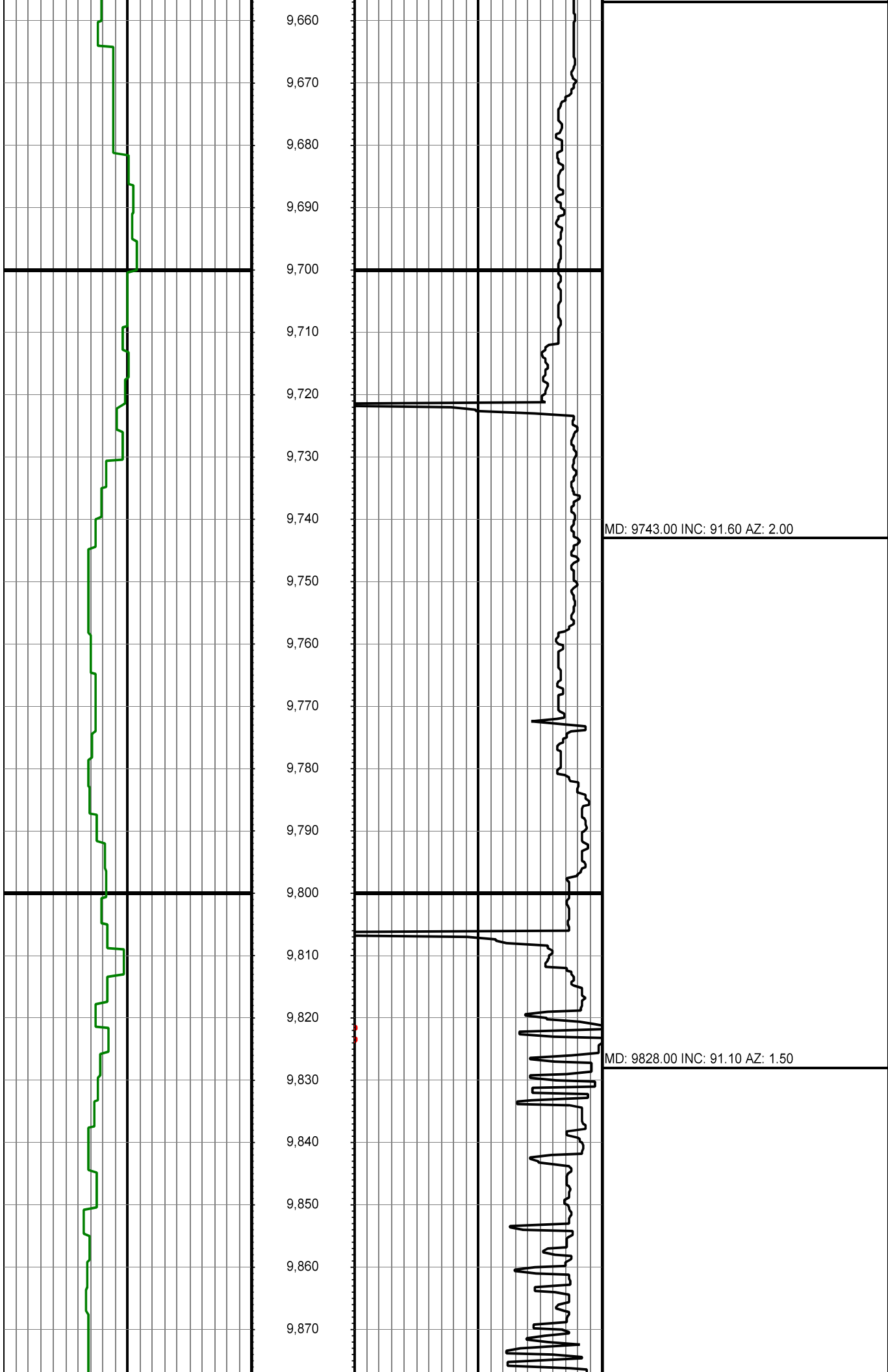


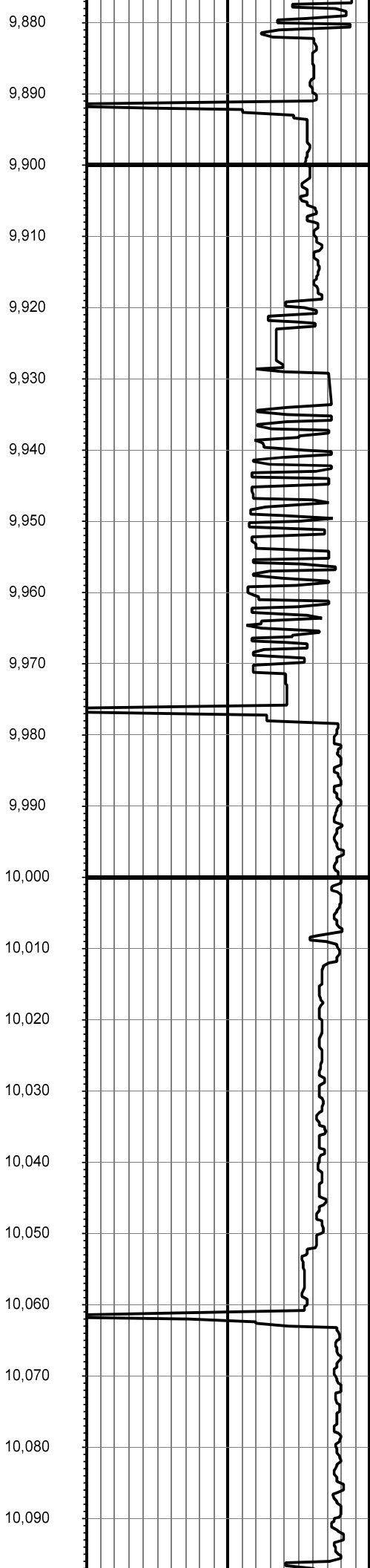
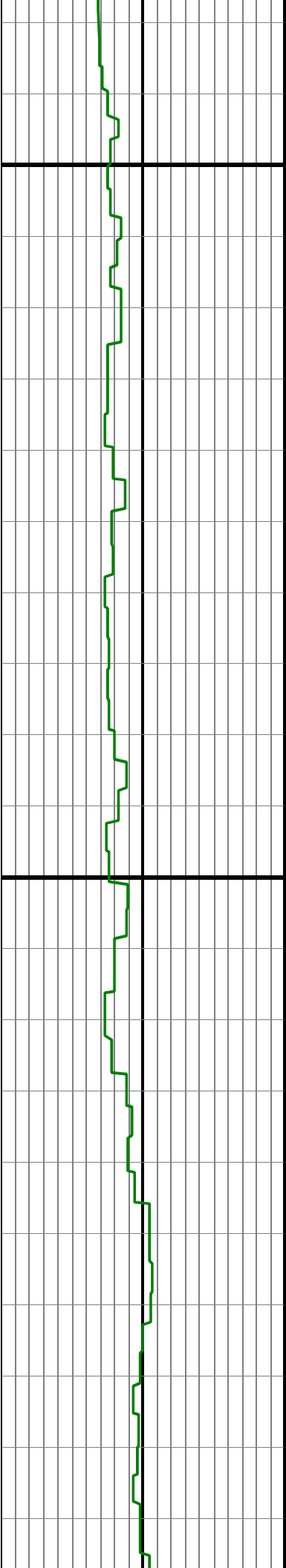
MD: 9231.00 INC: 89.40 AZ: 358.70

MD: 9316.00 INC: 89.20 AZ: 0.10

MD: 9402.00 INC: 89.50 AZ: 359.40



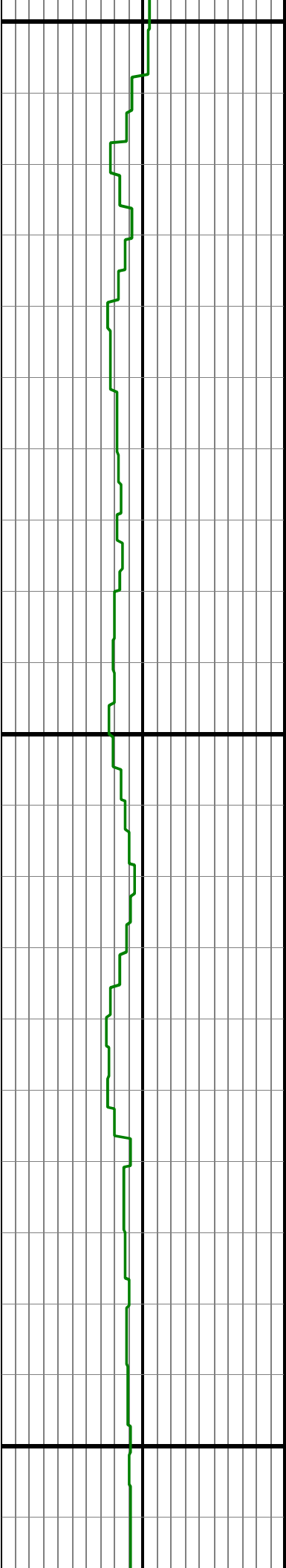




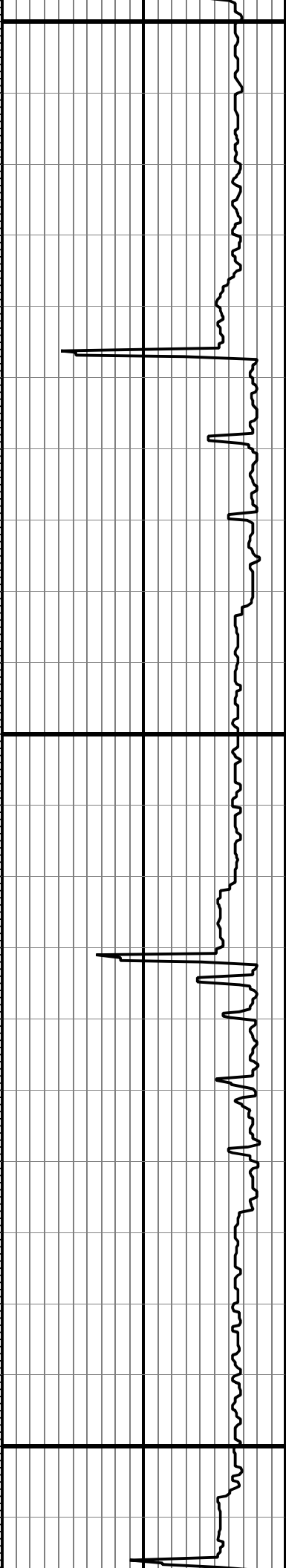
MD: 9913.00 INC: 91.10 AZ: 1.00

MD: 9998.00 INC: 90.70 AZ: 0.50

MD: 10084.00 INC: 90.70 AZ: 359.80



10,100
10,110
10,120
10,130
10,140
10,150
10,160
10,170
10,180
10,190
10,200
10,210
10,220
10,230
10,240
10,250
10,260
10,270
10,280
10,290
10,300
10,310



MD: 10169.00 INC: 90.90 AZ: 0.10

MD: 10254.00 INC: 90.40 AZ: 359.40

