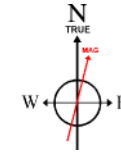


# BAYSWATER E & P LLC

Location: COLORADO Slot: SLOT#04 HESTER FARMS I-36HN (1709'FNL & 202'FWL, SEC.31)  
Field: WELD COUNTY (NAD83/TRUE NORTH) Well: HESTER FARMS I-36HN  
Facility: SEC.31-T07N-R66W Wellbore: HESTER FARMS I-36HN PWB

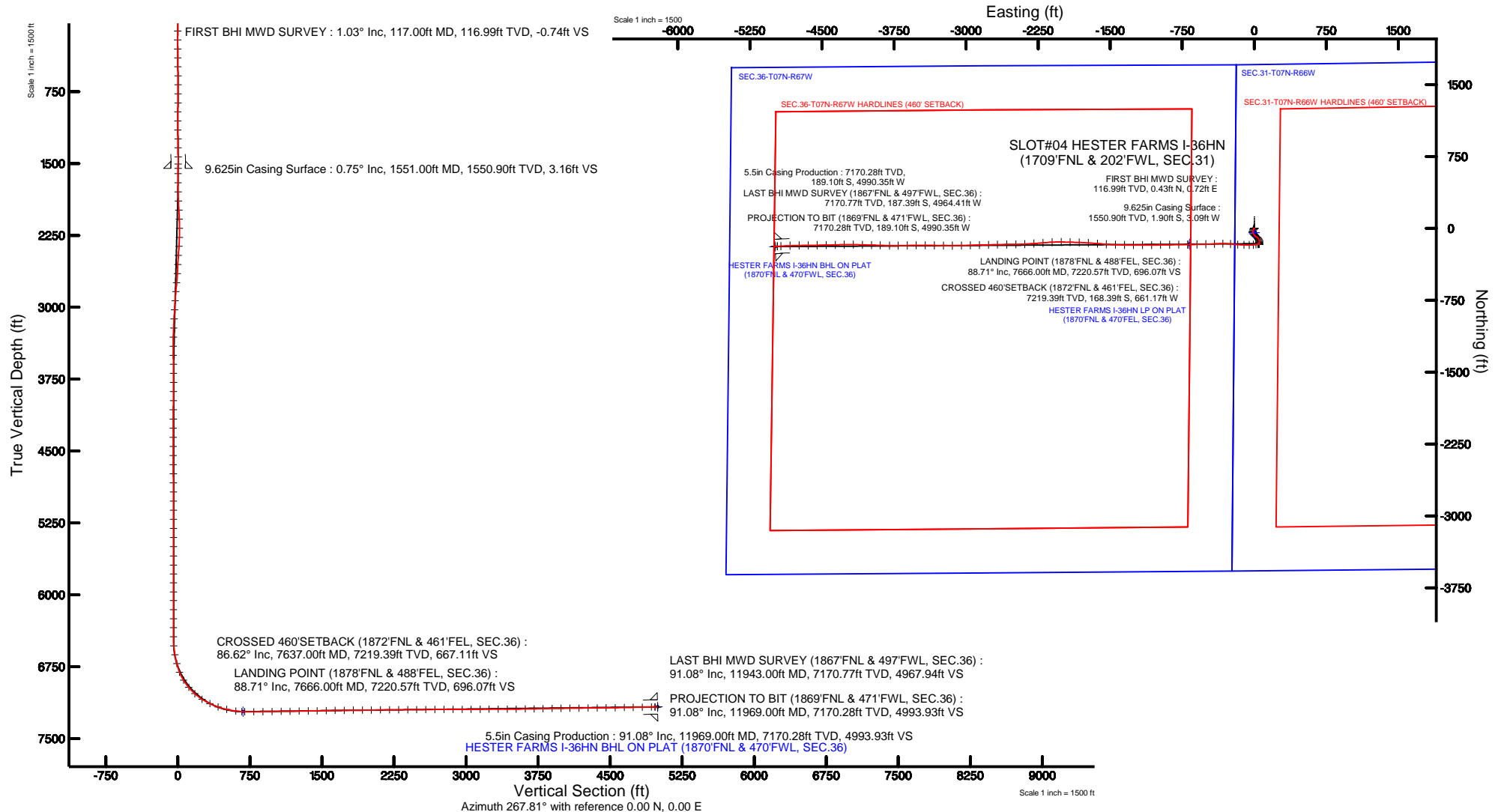
Plot reference wellpath is HESTER FARMS I-36HN PWP (REV-B.0)

True vertical depths are referenced to FRONTIER 8 (23KB) (RKB)	Grid System: NAD83 / Lambert Colorado SP, Northern Zone (501), US feet
Measured depths are referenced to FRONTIER 8 (23KB) (RKB)	North Reference: True north
FRONTIER 8 (23KB) (RKB) to Mean Sea Level: 4937 feet	Scale: True distance
Mean Sea Level to Mud line (At Slot: SLOT#04 HESTER FARMS I-36HN (1709'FNL & 202'FWL, SEC.31)): 0 feet	Depths are in feet
Coordinates are in feet referenced to Slot	Created by: ingmjamr on 12/21/2015



BGGM (1945.0 to 2016.0) Dip: 66.98° Field: 52587.8 nT  
Magnetic North is 8.45 degrees East of True North (at 11/25/2015)

To correct azimuth from Magnetic to True add 8.45 degrees



## REFERENCE WELLPATH IDENTIFICATION

Operator	BAYSWATER E & P LLC	Slot	SLOT#04 HESTER FARMS I-36HN (1709'FNL & 202'FWL, SEC.31)
Area	COLORADO	Well	HESTER FARMS I-36HN
Field	WELD COUNTY (NAD83/TRUE NORTH)	Wellbore	HESTER FARMS I-36HN AWB
Facility	SEC.31-T07N-R66W		

## REPORT SETUP INFORMATION

Projection System	NAD83 / Lambert Colorado SP, Northern Zone (501), US feet	Software System	WellArchitect® 5.0
North Reference	True	User	Ingmjmr
Scale	0.999969	Report Generated	2/25/2016 at 8:28:30 AM
Convergence at slot	0.44° East	Database/Source file	WA_DEN_Denver_Defn/HESTER_FARMS_I-36HN_AWP.xml

## WELLPATH LOCATION

	Local coordinates		Grid coordinates		Geographic coordinates	
	North[ft]	East[ft]	Easting[US ft]	Northing[US ft]	Latitude	Longitude
Slot Location	44.85	0.29	3185849.16	1437819.34	40°31'59.848"N	104°49'52.975"W
Facility Reference Pt			3185849.20	1437774.49	40°31'59.405"N	104°49'52.979"W
Field Reference Pt			3174587.00	1430859.75	40°30'51.890"N	104°52'19.470"W

## WELLPATH DATUM

Calculation method	Minimum curvature	FRONTIER 8 (23'KB) (RKB) to Facility Vertical Datum	4937.00ft
Horizontal Reference Pt	Slot	FRONTIER 8 (23'KB) (RKB) to Mean Sea Level	4937.00ft
Vertical Reference Pt	FRONTIER 8 (23'KB) (RKB)	FRONTIER 8 (23'KB) (RKB) to Mud Line at Slot (SLOT#04 HESTER FARMS I-36HN (1709'FNL & 202'FWL, SEC.31))	4937.00ft
MD Reference Pt	FRONTIER 8 (23'KB) (RKB)	Section Origin	N 0.00, E 0.00 ft
Field Vertical Reference	Mean Sea Level	Section Azimuth	267.81°

# Actual Wellpath Report

HESTER FARMS I-36HN AWP

Page 2 of 6

## REFERENCE WELLPATH IDENTIFICATION

Operator	BAYSWATER E & P LLC	Slot	SLOT#04 HESTER FARMS I-36HN (1709'FNL & 202'FWL, SEC.31)
Area	COLORADO	Well	HESTER FARMS I-36HN
Field	WELD COUNTY (NAD83/TRUE NORTH)	Wellbore	HESTER FARMS I-36HN AWB
Facility	SEC.31-T07N-R66W		

## WELLPATH DATA (131 stations) † = interpolated/extrapolated station

MD [ft]	Inclination [°]	Azimuth [°]	TVD [ft]	Vert Sect [ft]	North [ft]	East [ft]	Latitude	Longitude	DLS [°/100ft]	Comments
0.00†	0.000	59.050	0.00	0.00	0.00	0.00	40°31'59.848"N	104°49'52.975"W	0.00	
23.00	0.000	59.050	23.00	0.00	0.00	0.00	40°31'59.848"N	104°49'52.975"W	0.00	
117.00	1.030	59.050	116.99	-0.74	0.43	0.72	40°31'59.852"N	104°49'52.966"W	1.10	FIRST BHI MWD SURVEY
211.00	0.300	70.080	210.99	-1.72	0.95	1.68	40°31'59.857"N	104°49'52.953"W	0.78	
305.00	0.910	272.780	304.98	-1.21	1.07	1.17	40°31'59.859"N	104°49'52.960"W	1.27	
398.00	0.340	224.470	397.98	-0.27	0.91	0.24	40°31'59.857"N	104°49'52.972"W	0.78	
491.00	0.620	266.850	490.98	0.43	0.69	-0.46	40°31'59.855"N	104°49'52.981"W	0.47	
586.00	0.700	261.710	585.97	1.52	0.58	-1.55	40°31'59.854"N	104°49'52.995"W	0.10	
679.00	0.470	277.410	678.97	2.47	0.54	-2.49	40°31'59.853"N	104°49'53.007"W	0.30	
774.00	0.900	143.920	773.96	2.43	-0.01	-2.44	40°31'59.848"N	104°49'53.007"W	1.34	
867.00	0.700	77.100	866.95	1.47	-0.47	-1.45	40°31'59.843"N	104°49'52.994"W	0.96	
961.00	0.820	85.140	960.95	0.23	-0.29	-0.22	40°31'59.845"N	104°49'52.978"W	0.17	
1055.00	0.440	339.020	1054.94	-0.32	0.11	0.32	40°31'59.849"N	104°49'52.971"W	1.10	
1150.00	0.650	243.060	1149.94	0.28	0.20	-0.29	40°31'59.850"N	104°49'52.979"W	0.87	
1243.00	0.730	258.180	1242.93	1.35	-0.16	-1.34	40°31'59.846"N	104°49'52.992"W	0.21	
1336.00	1.220	219.770	1335.92	2.59	-1.04	-2.55	40°31'59.838"N	104°49'53.008"W	0.85	
1431.00	0.660	210.200	1430.91	3.56	-2.29	-3.48	40°31'59.825"N	104°49'53.020"W	0.61	
1505.00	0.640	41.900	1504.91	3.50	-2.35	-3.42	40°31'59.825"N	104°49'53.019"W	1.75	
1606.00	0.900	22.010	1605.90	2.78	-1.20	-2.74	40°31'59.836"N	104°49'53.011"W	0.37	
1701.00	1.110	183.430	1700.89	2.57	-1.42	-2.52	40°31'59.834"N	104°49'53.008"W	2.09	
1796.00	3.050	196.280	1795.82	3.46	-4.77	-3.28	40°31'59.801"N	104°49'53.017"W	2.09	
1892.00	4.150	208.510	1891.63	6.04	-10.27	-5.65	40°31'59.746"N	104°49'53.048"W	1.39	
1987.00	5.710	215.750	1986.28	10.70	-17.13	-10.06	40°31'59.679"N	104°49'53.105"W	1.76	
2082.00	6.180	197.800	2080.78	15.36	-25.83	-14.38	40°31'59.593"N	104°49'53.161"W	2.01	
2177.00	6.600	180.720	2175.20	17.38	-36.16	-16.01	40°31'59.491"N	104°49'53.182"W	2.04	
2273.00	6.700	163.350	2270.56	16.26	-47.05	-14.48	40°31'59.383"N	104°49'53.163"W	2.09	
2368.00	6.200	140.670	2364.97	11.78	-56.32	-9.64	40°31'59.291"N	104°49'53.100"W	2.71	
2463.00	5.540	132.890	2459.48	5.44	-63.41	-3.03	40°31'59.221"N	104°49'53.014"W	1.09	
2558.00	5.440	142.960	2554.04	-0.37	-70.13	3.05	40°31'59.155"N	104°49'52.936"W	1.02	
2653.00	5.880	143.070	2648.58	-5.72	-77.61	8.68	40°31'59.081"N	104°49'52.863"W	0.46	
2748.00	5.820	119.770	2743.10	-12.58	-83.90	15.79	40°31'59.019"N	104°49'52.771"W	2.48	
2843.00	5.720	115.930	2837.62	-20.84	-88.36	24.23	40°31'58.975"N	104°49'52.661"W	0.42	
2938.00	5.700	134.060	2932.15	-28.28	-93.71	31.88	40°31'58.922"N	104°49'52.562"W	1.89	
3034.00	5.960	144.880	3027.66	-34.29	-101.10	38.17	40°31'58.849"N	104°49'52.481"W	1.17	
3129.00	5.660	150.870	3122.17	-39.09	-109.23	43.29	40°31'58.769"N	104°49'52.414"W	0.71	
3224.00	5.910	152.520	3216.69	-43.30	-117.66	47.82	40°31'58.685"N	104°49'52.356"W	0.32	
3319.00	5.150	159.430	3311.25	-46.74	-125.99	51.58	40°31'58.603"N	104°49'52.307"W	1.06	
3414.00	4.170	176.150	3405.94	-48.18	-133.43	53.31	40°31'58.530"N	104°49'52.285"W	1.75	
3509.00	4.550	192.180	3500.66	-47.35	-140.56	52.75	40°31'58.459"N	104°49'52.292"W	1.34	
3604.00	3.570	193.430	3595.43	-45.62	-147.12	51.26	40°31'58.394"N	104°49'52.311"W	1.04	
3699.00	2.860	189.130	3690.28	-44.35	-152.34	50.20	40°31'58.343"N	104°49'52.325"W	0.79	
3794.00	1.900	171.810	3785.19	-44.05	-156.24	50.05	40°31'58.304"N	104°49'52.327"W	1.25	
3889.00	1.830	159.260	3880.14	-44.70	-159.21	50.81	40°31'58.275"N	104°49'52.317"W	0.44	
3984.00	1.150	133.040	3975.11	-45.86	-161.28	52.04	40°31'58.254"N	104°49'52.301"W	1.00	
4079.00	0.610	10.810	4070.11	-46.64	-161.44	52.84	40°31'58.253"N	104°49'52.291"W	1.65	

## REFERENCE WELLPATH IDENTIFICATION

Operator	BAYSWATER E & P LLC	Slot	SLOT#04 HESTER FARMS I-36HN (1709'FNL & 202'FWL, SEC.31)
Area	COLORADO	Well	HESTER FARMS I-36HN
Field	WELD COUNTY (NAD83/TRUE NORTH)	Wellbore	HESTER FARMS I-36HN AWB
Facility	SEC.31-T07N-R66W		

## WELLPATH DATA (131 stations) † = interpolated/extrapolated station

MD [ft]	Inclination [°]	Azimuth [°]	TVD [ft]	Vert Sect [ft]	North [ft]	East [ft]	Latitude	Longitude	DLS [°/100ft]	Comments
4175.00	0.110	165.790	4166.10	-46.78	-161.02	52.95	40°31'58.257"N	104°49'52.289"W	0.74	
4270.00	0.030	21.340	4261.10	-46.80	-161.09	52.99	40°31'58.256"N	104°49'52.289"W	0.14	
4365.00	0.230	168.490	4356.10	-46.84	-161.25	53.03	40°31'58.255"N	104°49'52.288"W	0.27	
4460.00	0.370	44.550	4451.10	-47.10	-161.22	53.29	40°31'58.255"N	104°49'52.285"W	0.56	
4555.00	0.410	195.280	4546.10	-47.22	-161.33	53.41	40°31'58.254"N	104°49'52.283"W	0.79	
4651.00	0.140	257.680	4642.10	-47.00	-161.69	53.21	40°31'58.250"N	104°49'52.286"W	0.38	
4746.00	0.440	226.140	4737.10	-46.62	-161.96	52.83	40°31'58.248"N	104°49'52.291"W	0.35	
4841.00	0.260	185.820	4832.10	-46.31	-162.43	52.55	40°31'58.243"N	104°49'52.294"W	0.31	
4936.00	1.030	327.960	4927.09	-45.86	-161.92	52.07	40°31'58.248"N	104°49'52.301"W	1.31	
5031.00	0.220	301.480	5022.09	-45.28	-161.10	51.46	40°31'58.256"N	104°49'52.309"W	0.88	
5126.00	0.250	80.280	5117.09	-45.33	-160.97	51.51	40°31'58.257"N	104°49'52.308"W	0.46	
5221.00	0.160	183.230	5212.09	-45.53	-161.07	51.71	40°31'58.256"N	104°49'52.305"W	0.34	
5316.00	0.160	267.230	5307.09	-45.38	-161.21	51.57	40°31'58.255"N	104°49'52.307"W	0.23	
5411.00	0.190	286.750	5402.09	-45.10	-161.17	51.28	40°31'58.255"N	104°49'52.311"W	0.07	
5507.00	0.220	218.110	5498.09	-44.83	-161.27	51.02	40°31'58.254"N	104°49'52.314"W	0.24	
5604.00	0.110	229.940	5595.09	-44.64	-161.47	50.83	40°31'58.252"N	104°49'52.317"W	0.12	
5698.00	0.290	38.790	5689.08	-44.72	-161.35	50.91	40°31'58.254"N	104°49'52.316"W	0.42	
5791.00	0.190	69.120	5782.08	-45.02	-161.11	51.20	40°31'58.256"N	104°49'52.312"W	0.17	
5885.00	0.070	209.640	5876.08	-45.14	-161.10	51.32	40°31'58.256"N	104°49'52.310"W	0.26	
5979.00	0.150	16.760	5970.08	-45.15	-161.04	51.33	40°31'58.257"N	104°49'52.310"W	0.23	
6070.00	0.100	23.850	6061.08	-45.22	-160.85	51.39	40°31'58.259"N	104°49'52.309"W	0.06	
6165.00	0.140	122.860	6156.08	-45.35	-160.84	51.53	40°31'58.259"N	104°49'52.308"W	0.19	
6260.00	0.190	345.750	6251.08	-45.42	-160.75	51.58	40°31'58.260"N	104°49'52.307"W	0.32	
6353.00	0.100	148.980	6344.08	-45.42	-160.67	51.59	40°31'58.260"N	104°49'52.307"W	0.31	
6447.00	0.130	139.120	6438.08	-45.53	-160.82	51.70	40°31'58.259"N	104°49'52.305"W	0.04	
6541.00	3.890	253.610	6532.01	-42.50	-161.80	48.71	40°31'58.249"N	104°49'52.344"W	4.20	
6635.00	10.630	259.050	6625.21	-30.83	-164.35	37.13	40°31'58.224"N	104°49'52.494"W	7.20	
6730.00	13.730	262.790	6718.06	-10.93	-167.43	17.33	40°31'58.194"N	104°49'52.751"W	3.37	
6824.00	21.600	264.240	6807.55	17.49	-170.57	-10.99	40°31'58.163"N	104°49'53.117"W	8.38	
6917.00	31.780	268.670	6890.54	59.18	-172.86	-52.62	40°31'58.140"N	104°49'53.656"W	11.15	
7010.00	40.140	271.870	6965.76	113.67	-172.45	-107.17	40°31'58.144"N	104°49'54.363"W	9.21	
7102.00	47.830	273.980	7031.91	177.24	-169.11	-170.92	40°31'58.177"N	104°49'55.189"W	8.51	
7197.00	56.710	275.570	7089.99	251.74	-162.80	-245.71	40°31'58.239"N	104°49'56.157"W	9.44	
7291.00	64.510	269.280	7136.12	333.26	-159.51	-327.42	40°31'58.272"N	104°49'57.215"W	10.14	
7384.00	71.870	267.540	7170.65	419.54	-161.94	-413.66	40°31'58.248"N	104°49'58.332"W	8.10	
7478.00	77.080	268.200	7195.80	510.08	-165.30	-504.14	40°31'58.215"N	104°49'59.504"W	5.58	
7573.00	82.000	269.090	7213.04	603.46	-167.50	-597.51	40°31'58.193"N	104°50'00.713"W	5.26	
7637.00†	86.618	269.304	7219.39	667.11	-168.39	-661.17	40°31'58.184"N	104°50'01.538"W	7.22	CROSSED 460'SETBACK (1872'FNL & 461'FEL, SEC.36)
7666.00	88.710	269.400	7220.57	696.07	-168.72	-690.14	40°31'58.181"N	104°50'01.913"W	7.22	LANDING POINT (1878'FNL & 488'FEL, SEC.36)
7761.00	90.860	269.490	7220.93	791.03	-169.64	-785.13	40°31'58.172"N	104°50'03.143"W	2.27	
7856.00	90.800	269.250	7219.55	885.98	-170.69	-880.11	40°31'58.161"N	104°50'04.373"W	0.26	
7951.00	91.020	268.830	7218.04	980.95	-172.28	-975.09	40°31'58.145"N	104°50'05.603"W	0.50	
8045.00	90.800	269.440	7216.55	1074.91	-173.70	-1069.06	40°31'58.131"N	104°50'06.820"W	0.69	
8138.00	90.620	269.870	7215.40	1167.85	-174.26	-1162.05	40°31'58.126"N	104°50'08.025"W	0.50	
8234.00	91.260	269.970	7213.82	1263.78	-174.39	-1258.04	40°31'58.124"N	104°50'09.268"W	0.67	

## REFERENCE WELLPATH IDENTIFICATION

Operator	BAYSWATER E & P LLC	Slot	SLOT#04 HESTER FARMS I-36HN (1709'FNL & 202'FWL, SEC.31)
Area	COLORADO	Well	HESTER FARMS I-36HN
Field	WELD COUNTY (NAD83/TRUE NORTH)	Wellbore	HESTER FARMS I-36HN AWB
Facility	SEC.31-T07N-R66W		

## WELLPATH DATA (131 stations)

MD [ft]	Inclination [°]	Azimuth [°]	TVD [ft]	Vert Sect [ft]	North [ft]	East [ft]	Latitude	Longitude	DLS [°/100ft]	Comments
8327.00	90.680	271.710	7212.25	1356.63	-173.03	-1351.01	40°31'58.138"N	104°50'10.472"W	1.97	
8422.00	91.660	271.960	7210.31	1451.38	-169.99	-1445.94	40°31'58.168"N	104°50'11.701"W	1.06	
8516.00	90.860	274.040	7208.24	1544.96	-165.07	-1539.79	40°31'58.216"N	104°50'12.917"W	2.37	
8610.00	91.380	274.240	7206.40	1638.37	-158.28	-1633.52	40°31'58.283"N	104°50'14.131"W	0.59	
8704.00	90.430	273.800	7204.92	1731.81	-151.69	-1727.28	40°31'58.348"N	104°50'15.345"W	1.11	
8799.00	90.580	271.760	7204.08	1826.44	-147.09	-1822.16	40°31'58.394"N	104°50'16.574"W	2.15	
8894.00	89.880	271.280	7203.70	1921.24	-144.57	-1917.12	40°31'58.419"N	104°50'17.803"W	0.89	
8987.00	91.050	271.440	7202.95	2014.06	-142.36	-2010.09	40°31'58.440"N	104°50'19.007"W	1.27	
9082.00	90.830	266.680	7201.39	2109.00	-143.92	-2105.04	40°31'58.425"N	104°50'20.237"W	5.02	
9176.00	90.520	265.020	7200.28	2202.93	-150.72	-2198.78	40°31'58.358"N	104°50'21.451"W	1.80	
9271.00	90.120	266.000	7199.75	2297.85	-158.16	-2293.49	40°31'58.284"N	104°50'22.678"W	1.11	
9366.00	90.430	267.400	7199.29	2392.83	-163.63	-2388.33	40°31'58.230"N	104°50'23.906"W	1.51	
9460.00	90.520	268.830	7198.51	2486.82	-166.72	-2482.27	40°31'58.199"N	104°50'25.123"W	1.52	
9555.00	90.430	269.930	7197.72	2581.78	-167.75	-2577.26	40°31'58.189"N	104°50'26.353"W	1.16	
9650.00	90.460	268.710	7196.99	2676.75	-168.87	-2672.25	40°31'58.178"N	104°50'27.583"W	1.28	
9743.00	90.460	268.780	7196.24	2769.73	-170.91	-2765.22	40°31'58.158"N	104°50'28.787"W	0.08	
9838.00	90.220	268.380	7195.68	2864.72	-173.26	-2860.19	40°31'58.134"N	104°50'30.017"W	0.49	
9933.00	90.090	267.800	7195.42	2959.72	-176.43	-2955.14	40°31'58.103"N	104°50'31.247"W	0.63	
10026.00	90.280	268.700	7195.12	3052.71	-179.27	-3048.09	40°31'58.075"N	104°50'32.450"W	0.99	
10120.00	90.370	269.820	7194.59	3146.68	-180.48	-3142.08	40°31'58.063"N	104°50'33.668"W	1.20	
10214.00	90.400	271.260	7193.95	3240.57	-179.60	-3236.08	40°31'58.071"N	104°50'34.885"W	1.53	
10309.00	90.180	270.990	7193.47	3335.41	-177.73	-3331.06	40°31'58.090"N	104°50'36.115"W	0.37	
10404.00	90.220	270.330	7193.14	3430.29	-176.64	-3426.05	40°31'58.100"N	104°50'37.345"W	0.70	
10497.00	90.520	269.200	7192.54	3523.23	-177.02	-3519.04	40°31'58.096"N	104°50'38.550"W	1.26	
10591.00	90.580	269.660	7191.64	3617.19	-177.96	-3613.03	40°31'58.087"N	104°50'39.767"W	0.49	
10684.00	91.140	269.710	7190.24	3710.13	-178.47	-3706.02	40°31'58.082"N	104°50'40.971"W	0.60	
10776.00	91.260	270.290	7188.32	3802.04	-178.47	-3798.00	40°31'58.082"N	104°50'42.162"W	0.64	
10871.00	90.950	271.960	7186.48	3896.87	-176.60	-3892.96	40°31'58.100"N	104°50'43.392"W	1.79	
10963.00	91.020	271.230	7184.90	3988.65	-174.04	-3984.91	40°31'58.125"N	104°50'44.583"W	0.80	
11056.00	90.680	271.780	7183.52	4081.45	-171.60	-4077.87	40°31'58.149"N	104°50'45.787"W	0.70	
11151.00	90.620	271.530	7182.45	4176.23	-168.86	-4172.82	40°31'58.176"N	104°50'47.017"W	0.27	
11246.00	90.520	268.230	7181.50	4271.15	-169.05	-4267.81	40°31'58.174"N	104°50'48.247"W	3.48	
11340.00	90.890	268.290	7180.34	4365.14	-171.91	-4361.75	40°31'58.145"N	104°50'49.463"W	0.40	
11434.00	90.710	269.140	7179.03	4459.12	-174.02	-4455.72	40°31'58.124"N	104°50'50.680"W	0.92	
11529.00	90.830	268.860	7177.75	4554.09	-175.67	-4550.70	40°31'58.108"N	104°50'51.910"W	0.32	
11622.00	91.140	269.630	7176.16	4647.04	-176.90	-4643.68	40°31'58.096"N	104°50'53.115"W	0.89	
11716.00	90.980	268.840	7174.42	4741.00	-178.15	-4737.65	40°31'58.083"N	104°50'54.332"W	0.86	
11811.00	90.920	268.110	7172.84	4835.98	-180.68	-4832.60	40°31'58.058"N	104°50'55.561"W	0.77	
11905.00	90.830	266.600	7171.41	4929.96	-185.02	-4926.49	40°31'58.015"N	104°50'56.777"W	1.61	
11943.00	91.080	266.230	7170.77	4967.94	-187.39	-4964.41	40°31'57.991"N	104°50'57.268"W	1.17	LAST BHI MWD SURVEY (1867'FNL & 497'FWL, SEC.36)
11969.00	91.080	266.230	7170.28	4993.93	-189.10	-4990.35	40°31'57.974"N	104°50'57.604"W	0.00	PROJECTION TO BIT (1869'FNL & 471'FWL, SEC.36)

## REFERENCE WELLPATH IDENTIFICATION

Operator	BAYSWATER E & P LLC	Slot	SLOT#04 HESTER FARMS I-36HN (1709'FNL & 202'FWL, SEC.31)
Area	COLORADO	Well	HESTER FARMS I-36HN
Field	WELD COUNTY (NAD83/TRUE NORTH)	Wellbore	HESTER FARMS I-36HN AWB
Facility	SEC.31-T07N-R66W		

## HOLE & CASING SECTIONS - Ref Wellbore: HESTER FARMS I-36HN AWB Ref Wellpath: HESTER FARMS I-36HN AWP

String/Diameter	Start MD [ft]	End MD [ft]	Interval [ft]	Start TVD [ft]	End TVD [ft]	Start N/S [ft]	Start E/W [ft]	End N/S [ft]	End E/W [ft]
13.5in Open Hole	23.00	1551.00	1528.00	23.00	1550.90	0.00	0.00	-1.90	-3.09
9.625in Casing Surface	23.00	1551.00	1528.00	23.00	1550.90	0.00	0.00	-1.90	-3.09
8.75in Open Hole	1551.00	11969.00	10418.00	1550.90	7170.28	-1.90	-3.09	-189.10	-4990.35
5.5in Casing Production	23.00	11969.00	11946.00	23.00	7170.28	0.00	0.00	-189.10	-4990.35

## TARGETS

Name	TVD [ft]	North [ft]	East [ft]	Grid East [US ft]	Grid North [US ft]	Latitude	Longitude	Shape
SEC.31-T07N-R66W	1.00	-44.83	-0.31	3185849.19	1437774.51	40°31'59.405"N	104°49'52.979"W	polygon
SEC.36-T07N-R67W	1.00	-44.83	-0.31	3185849.19	1437774.51	40°31'59.405"N	104°49'52.979"W	polygon
HESTER FARMS I-36HN BHL ON PLAT (1870'FNL & 470'FWL, SEC.36)	7169.00	-190.48	-4991.04	3180859.86	1437591.25	40°31'57.961"N	104°50'57.613"W	point
HESTER FARMS I-36HN LP ON PLAT (1870'FNL & 470'FEL, SEC.36)	7219.00	-165.07	-673.27	3185177.17	1437649.21	40°31'58.217"N	104°50'01.694"W	point
SEC.31-T07N-R66W HARDLINES (460' SETBACK)	7389.00	-44.83	-0.31	3185849.19	1437774.51	40°31'59.405"N	104°49'52.979"W	polygon
SEC.36-T07N-R67W HARDLINES (460' SETBACK)	7389.00	-44.83	-0.31	3185849.19	1437774.51	40°31'59.405"N	104°49'52.979"W	polygon

## WELLPATH COMPOSITION - Ref Wellbore: HESTER FARMS I-36HN AWB Ref Wellpath: HESTER FARMS I-36HN AWP

Start MD [ft]	End MD [ft]	Positional Uncertainty Model	Log Name/Comment	Wellbore
23.00	1505.00	Custom NaviTrak (Standard) (Rockies 0.03Gt model)	BHI MWD/NAVITRAK (STD) 13.5" HOLE <117-1505>	HESTER FARMS I-36HN AWB
1505.00	11943.00	Custom NaviTrak (Short spacing) (AT Curve sf 0.01) (Rockies 0.03Gt model)	BHI MWD/NAVITRAK (AT-CURVE; SHORT SPACING) 8.75" HOLE <1606-11943>	HESTER FARMS I-36HN AWB
11943.00	11969.00	Blind Drilling (std)	Projection to bit	HESTER FARMS I-36HN AWB

## REFERENCE WELLPATH IDENTIFICATION

Operator	BAYSWATER E & P LLC	Slot	SLOT#04 HESTER FARMS I-36HN (1709'FNL & 202'FWL, SEC.31)
Area	COLORADO	Well	HESTER FARMS I-36HN
Field	WELD COUNTY (NAD83/TRUE NORTH)	Wellbore	HESTER FARMS I-36HN AWB
Facility	SEC.31-T07N-R66W		

## WELLPATH COMMENTS

MD [ft]	Inclination [°]	Azimuth [°]	TVD [ft]	Comment
117.00	1.030	59.050	116.99	FIRST BHI MWD SURVEY
7637.00	86.618	269.304	7219.39	CROSSED 460'SETBACK (1872'FNL & 461'FEL, SEC.36)
7666.00	88.710	269.400	7220.57	LANDING POINT (1878'FNL & 488'FEL, SEC.36)
11943.00	91.080	266.230	7170.77	LAST BHI MWD SURVEY (1867'FNL & 497'FWL, SEC.36)
11969.00	91.080	266.230	7170.28	PROJECTION TO BIT (1869'FNL & 471'FWL, SEC.36)