

Bayswater Exploration & Production, LLC

Well Name: **Hester Farms H-36HC**

Surface Location: Hester Farms Pad Sec.31-7N-66W

North American Datum 1983 , US State Plane 1983, Colorado Northern Zone

Ground Elevation: 4914.0

[illegible]

0.0 0.01437834.23 3185849.31 40.533332 -104.831381

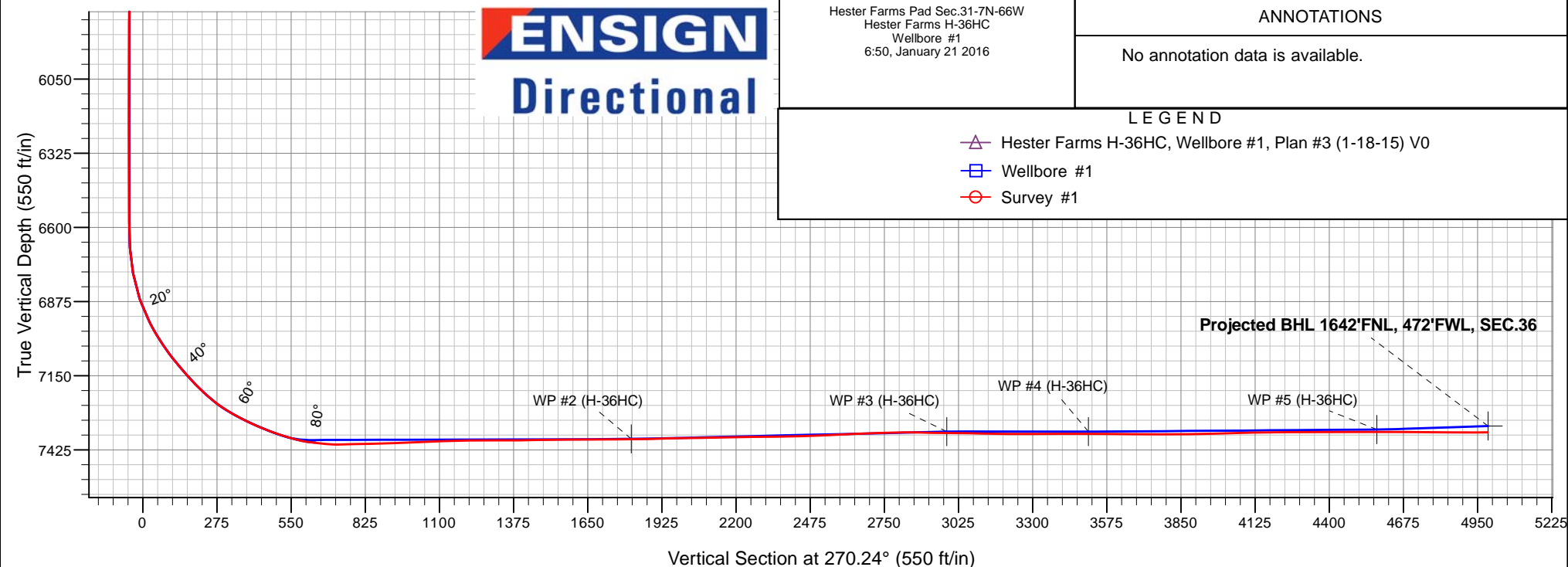
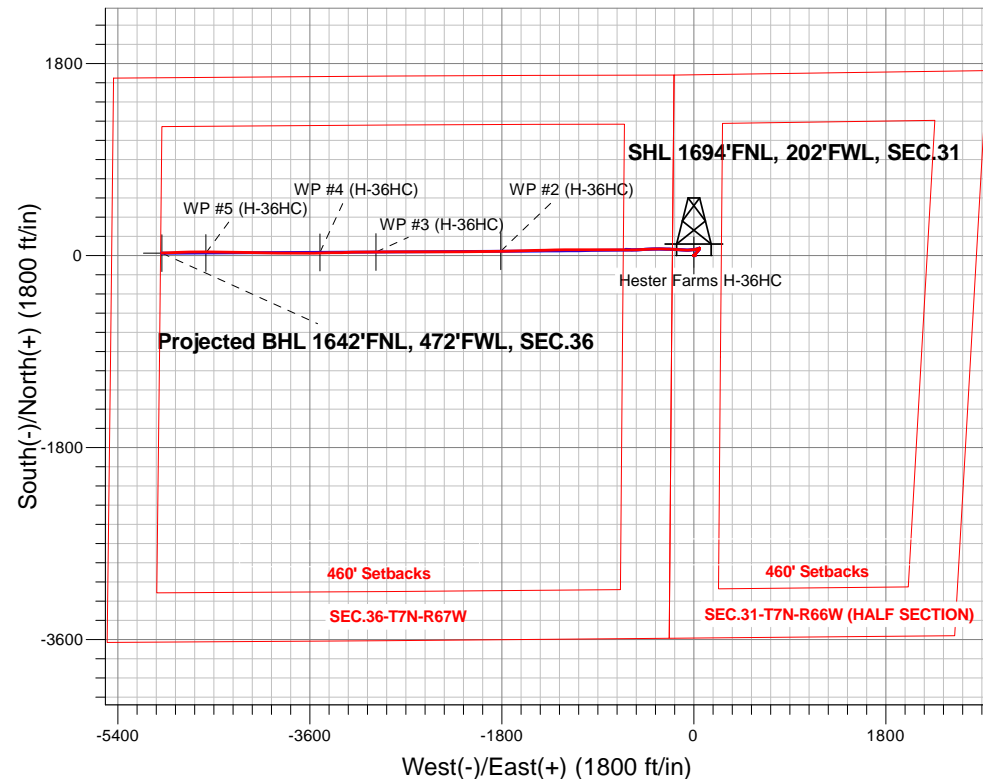
RKB - 22.5' WELL @ 4936.5ft (RKB - 22.5')

FINAL SURVEY

Projected Bottom Hole Location

12107'MD 7360'TVD 23'N & 4987'W of SHL

90.2 degree Incl @ 268.5 degree AZM





Bayswater Exploration & Production, LLC

SEC.31-T7N-R66W

Hester Farms Pad Sec.31-7N-66W

Hester Farms H-36HC

Wellbore #1

Survey: Survey #1

Standard Survey Report

21 January, 2016



BAYSWATER
EXPLORATION & PRODUCTION, LLC

Company:	Bayswater Exploration & Production, LLC	Local Co-ordinate Reference:	Well Hester Farms H-36HC
Project:	SEC.31-T7N-R66W	TVD Reference:	WELL @ 4936.5ft (RKB - 22.5')
Site:	Hester Farms Pad Sec.31-7N-66W	MD Reference:	WELL @ 4936.5ft (RKB - 22.5')
Well:	Hester Farms H-36HC	North Reference:	True
Wellbore:	Wellbore #1	Survey Calculation Method:	Minimum Curvature
Design:	Wellbore #1	Database:	US_EDM

Project	SEC.31-T7N-R66W, Weld County, Colorado		
Map System:	US State Plane 1983	System Datum:	Mean Sea Level
Geo Datum:	North American Datum 1983		Using Well Reference Point
Map Zone:	Colorado Northern Zone		Using geodetic scale factor

Site		Hester Farms Pad Sec.31-7N-66W			
Site Position:		Northing:	1,437,939.53 usft	Latitude:	40.533621
From:	Lat/Long	Easting:	3,185,849.35 usft	Longitude:	-104.831378
Position Uncertainty:	0.0 ft	Slot Radius:	13-3/16 "	Grid Convergence:	0.43 °

Well	Hester Farms H-36HC					
Well Position	+N/-S	0.0 ft	Northing:	1,437,834.23 usft	Latitude:	40.533332
	+E/-W	0.0 ft	Easting:	3,185,849.31 usft	Longitude:	-104.831381
Position Uncertainty		0.0 ft	Wellhead Elevation:	ft	Ground Level:	4,914.0 ft

Wellbore	Wellbore #1				
Magnetics	Model Name	Sample Date	Declination (°)	Dip Angle (°)	Field Strength (nT)
	IGRF2010	1/18/2016	8.29	66.99	52,709

Design	Wellbore #1				
Audit Notes:					
Version:	1.0	Phase:	ACTUAL	Tie On Depth:	0.0
Vertical Section:	Depth From (TVD) (ft)	+N/-S (ft)	+E/-W (ft)	Direction (°)	
	0.0	0.0	0.0	270.24	

Survey Program	Date	1/21/2016			
From (ft)	To (ft)	Survey (Wellbore)	Tool Name	Description	
23.0	7,570.0	Survey #1 (Wellbore #1)	MWD	MWD - Standard	
7,630.0	7,758.0	Survey #2 (Wellbore #1)	MWD	MWD - Standard	

Survey										
Measured Depth (ft)	Inclination (°)	Azimuth (°)	Vertical Depth (ft)	+N/-S (ft)	+E/-W (ft)	Vertical Section (ft)	Dogleg Rate (°/100usft)	Build Rate (°/100usft)	Turn Rate (°/100usft)	
0.0	0.00	0.00	0.0	0.0	0.0	0.0	0.00	0.00	0.00	
1.0	0.00	0.00	1.0	0.0	0.0	0.0	0.00	0.00	0.00	
SHL 1694'FNL, 202'FWL, SEC.31										
23.0	0.00	36.19	23.0	0.0	0.0	0.0	0.00	0.00	0.00	
117.0	0.81	319.15	117.0	0.5	-0.4	0.4	0.86	0.86	0.00	
211.0	0.03	342.23	211.0	1.0	-0.9	0.9	0.83	-0.83	24.55	
305.0	0.49	286.54	305.0	1.2	-1.3	1.3	0.50	0.49	-59.24	
398.0	0.46	89.32	398.0	1.3	-1.3	1.3	1.01	-0.03	175.03	
491.0	0.90	114.06	491.0	1.0	-0.2	0.2	0.56	0.47	26.60	
586.0	0.62	114.48	586.0	0.5	0.9	-0.9	0.29	-0.29	0.44	

Company:	Bayswater Exploration & Production, LLC	Local Co-ordinate Reference:	Well Hester Farms H-36HC
Project:	SEC.31-T7N-R66W	TVD Reference:	WELL @ 4936.5ft (RKB - 22.5')
Site:	Hester Farms Pad Sec.31-7N-66W	MD Reference:	WELL @ 4936.5ft (RKB - 22.5')
Well:	Hester Farms H-36HC	North Reference:	True
Wellbore:	Wellbore #1	Survey Calculation Method:	Minimum Curvature
Design:	Wellbore #1	Database:	US_EDM

Survey									
Measured Depth (ft)	Inclination (°)	Azimuth (°)	Vertical Depth (ft)	+N/-S (ft)	+E/-W (ft)	Vertical Section (ft)	Dogleg Rate (°/100usft)	Build Rate (°/100usft)	Turn Rate (°/100usft)
679.0	0.94	95.69	679.0	0.2	2.1	-2.1	0.44	0.34	-20.20
774.0	0.25	239.25	774.0	0.0	2.7	-2.7	1.21	-0.73	151.12
867.0	0.50	235.95	867.0	-0.3	2.2	-2.2	0.27	0.27	-3.55
961.0	0.77	249.02	961.0	-0.8	1.3	-1.3	0.32	0.29	13.90
1,055.0	0.10	108.92	1,055.0	-1.0	0.8	-0.8	0.90	-0.71	-149.04
1,150.0	0.54	152.36	1,150.0	-1.5	1.1	-1.1	0.50	0.46	45.73
1,243.0	0.66	28.15	1,242.9	-1.4	1.5	-1.5	1.14	0.13	-133.56
1,336.0	0.83	47.62	1,335.9	-0.4	2.3	-2.3	0.33	0.18	20.94
1,431.0	0.41	331.39	1,430.9	0.3	2.6	-2.6	0.88	-0.44	-80.24
1,489.0	0.79	309.31	1,488.9	0.8	2.2	-2.2	0.76	0.66	-38.07
1,597.0	0.82	154.93	1,596.9	0.5	2.0	-2.0	1.45	0.03	-142.94
1,689.0	2.58	113.27	1,688.9	-0.9	4.1	-4.1	2.22	1.91	-45.28
1,784.0	2.73	89.02	1,783.8	-1.7	8.4	-8.4	1.18	0.16	-25.53
1,877.0	2.75	43.88	1,876.7	-0.1	12.1	-12.1	2.26	0.02	-48.54
1,971.0	2.92	42.49	1,970.6	3.3	15.3	-15.3	0.20	0.18	-1.48
2,065.0	1.42	357.47	2,064.5	6.3	16.9	-16.8	2.30	-1.60	-47.89
2,160.0	1.54	336.64	2,159.5	8.6	16.3	-16.3	0.58	0.13	-21.93
2,253.0	1.57	332.31	2,252.4	10.9	15.2	-15.2	0.13	0.03	-4.66
2,348.0	1.54	330.94	2,347.4	13.2	14.0	-13.9	0.05	-0.03	-1.44
2,443.0	2.40	27.94	2,442.4	16.0	14.3	-14.2	2.13	0.91	60.00
2,538.0	2.30	38.70	2,537.3	19.3	16.4	-16.4	0.48	-0.11	11.33
2,632.0	2.08	37.71	2,631.2	22.1	18.7	-18.6	0.24	-0.23	-1.05
2,725.0	1.24	47.11	2,724.2	24.1	20.4	-20.3	0.95	-0.90	10.11
2,821.0	3.82	47.14	2,820.1	27.0	23.5	-23.4	2.69	2.69	0.03
2,914.0	3.80	48.54	2,912.9	31.2	28.1	-28.0	0.10	-0.02	1.51
3,009.0	3.64	43.58	3,007.7	35.4	32.6	-32.4	0.38	-0.17	-5.22
3,103.0	3.52	40.68	3,101.5	39.8	36.5	-36.3	0.23	-0.13	-3.09
3,197.0	3.47	39.45	3,195.3	44.2	40.2	-40.0	0.10	-0.05	-1.31
3,292.0	3.10	39.32	3,290.2	48.4	43.6	-43.4	0.39	-0.39	-0.14
3,387.0	2.84	35.59	3,385.0	52.3	46.6	-46.4	0.34	-0.27	-3.93
3,481.0	2.86	31.00	3,478.9	56.2	49.2	-49.0	0.24	0.02	-4.88
3,575.0	2.45	27.75	3,572.8	60.0	51.3	-51.1	0.46	-0.44	-3.46
3,669.0	2.29	21.30	3,666.7	63.5	53.0	-52.7	0.33	-0.17	-6.86
3,763.0	1.10	314.27	3,760.7	65.9	53.0	-52.7	2.25	-1.27	-71.31
3,858.0	1.53	292.99	3,855.7	67.0	51.2	-50.9	0.68	0.45	-22.40
3,953.0	1.06	300.78	3,950.6	67.9	49.2	-49.0	0.53	-0.49	8.20
4,047.0	0.44	132.54	4,044.6	68.1	48.8	-48.5	1.59	-0.66	-178.98
4,142.0	0.74	138.81	4,139.6	67.4	49.4	-49.2	0.32	0.32	6.60
4,236.0	0.48	145.88	4,233.6	66.6	50.1	-49.8	0.29	-0.28	7.52
4,330.0	0.37	151.39	4,327.6	66.1	50.4	-50.2	0.12	-0.12	5.86
4,425.0	0.22	131.85	4,422.6	65.7	50.7	-50.4	0.19	-0.16	-20.57
4,519.0	0.47	108.86	4,516.6	65.4	51.2	-50.9	0.30	0.27	-24.46
4,613.0	0.41	94.80	4,610.6	65.3	51.9	-51.6	0.13	-0.06	-14.96

Company:	Bayswater Exploration & Production, LLC	Local Co-ordinate Reference:	Well Hester Farms H-36HC
Project:	SEC.31-T7N-R66W	TVD Reference:	WELL @ 4936.5ft (RKB - 22.5')
Site:	Hester Farms Pad Sec.31-7N-66W	MD Reference:	WELL @ 4936.5ft (RKB - 22.5')
Well:	Hester Farms H-36HC	North Reference:	True
Wellbore:	Wellbore #1	Survey Calculation Method:	Minimum Curvature
Design:	Wellbore #1	Database:	US_EDM

Survey									
Measured Depth (ft)	Inclination (°)	Azimuth (°)	Vertical Depth (ft)	+N/-S (ft)	+E/-W (ft)	Vertical Section (ft)	Dogleg Rate (°/100usft)	Build Rate (°/100usft)	Turn Rate (°/100usft)
4,707.0	0.40	145.13	4,704.6	65.0	52.4	-52.2	0.37	-0.01	53.54
4,801.0	0.66	193.82	4,798.6	64.2	52.5	-52.2	0.53	0.28	51.80
4,896.0	0.90	205.08	4,893.6	63.0	52.0	-51.8	0.30	0.25	11.85
4,990.0	1.01	211.72	4,987.6	61.6	51.3	-51.0	0.17	0.12	7.06
5,084.0	0.07	359.51	5,081.6	60.9	50.9	-50.6	1.14	-1.00	157.22
5,177.0	0.13	38.53	5,174.6	61.1	50.9	-50.7	0.09	0.06	41.96
5,271.0	0.12	306.59	5,268.6	61.2	50.9	-50.7	0.19	-0.01	-97.81
5,363.0	0.22	271.70	5,360.6	61.3	50.7	-50.4	0.15	0.11	-37.92
5,458.0	0.55	264.01	5,455.6	61.3	50.0	-49.8	0.35	0.35	-8.09
5,550.0	0.79	223.09	5,547.6	60.7	49.1	-48.9	0.56	0.26	-44.48
5,643.0	0.69	16.44	5,640.6	60.8	48.9	-48.6	1.55	-0.11	164.89
5,737.0	0.80	37.39	5,734.6	61.9	49.4	-49.2	0.31	0.12	22.29
5,832.0	0.81	33.12	5,829.6	63.0	50.2	-49.9	0.06	0.01	-4.49
5,927.0	0.87	16.37	5,924.6	64.2	50.8	-50.5	0.27	0.06	-17.63
6,021.0	0.68	0.55	6,018.5	65.5	51.0	-50.7	0.30	-0.20	-16.83
6,116.0	0.46	14.86	6,113.5	66.4	51.1	-50.8	0.27	-0.23	15.06
6,209.0	0.19	316.65	6,206.5	66.9	51.1	-50.8	0.42	-0.29	-62.59
6,303.0	0.23	294.75	6,300.5	67.1	50.8	-50.5	0.09	0.04	-23.30
6,398.0	0.36	279.21	6,395.5	67.2	50.3	-50.0	0.16	0.14	-16.36
6,492.0	0.78	163.54	6,489.5	66.6	50.2	-49.9	1.05	0.45	-123.05
6,585.0	0.67	178.06	6,582.5	65.5	50.4	-50.1	0.23	-0.12	15.61
6,677.0	3.25	254.03	6,674.5	64.2	47.9	-47.7	3.43	2.80	82.58
6,772.0	10.63	262.03	6,768.7	62.3	36.6	-36.4	7.82	7.77	8.42
6,868.0	18.69	257.10	6,861.5	57.6	12.8	-12.6	8.49	8.40	-5.14
6,961.0	26.89	261.42	6,947.2	51.1	-22.5	22.8	8.99	8.82	4.65
7,053.0	33.58	272.36	7,026.7	49.0	-68.6	68.8	9.39	7.27	11.89
7,147.0	39.38	274.35	7,102.2	52.4	-124.4	124.6	6.30	6.17	2.12
7,241.0	43.08	272.92	7,172.9	56.3	-186.2	186.4	4.06	3.94	-1.52
7,336.0	50.20	271.47	7,238.1	58.9	-255.2	255.4	7.58	7.49	-1.53
7,431.0	60.98	270.92	7,291.7	60.5	-333.4	333.7	11.36	11.35	-0.58
7,494.0	64.55	268.31	7,320.5	60.1	-389.4	389.7	6.76	5.67	-4.14
7,570.0	68.15	266.70	7,351.0	57.0	-459.0	459.2	5.12	4.74	-2.12
7,630.0	72.40	267.69	7,371.3	54.3	-515.4	515.6	7.25	7.08	1.65
7,687.0	75.40	268.60	7,387.1	52.5	-570.1	570.3	5.48	5.26	1.60
7,729.0	81.60	270.40	7,395.4	52.2	-611.2	611.4	15.35	14.76	4.29
7,738.6	82.47	270.40	7,396.8	52.2	-620.8	621.0	9.03	9.03	0.00
LPL 1641°FNL, 420°FEL, SEC.36									
7,760.0	84.40	270.40	7,399.2	52.4	-642.0	642.2	9.03	9.03	0.00
7,778.0	83.60	270.60	7,401.1	52.5	-659.9	660.1	4.58	-4.44	1.11
7,808.0	85.60	269.70	7,403.9	52.6	-689.7	690.0	7.31	6.67	-3.00
7,839.0	89.70	270.00	7,405.2	52.5	-720.7	720.9	13.26	13.23	0.97
7,869.0	92.30	270.20	7,404.7	52.6	-750.7	750.9	8.69	8.67	0.67
7,900.0	91.50	270.00	7,403.7	52.6	-781.7	781.9	2.66	-2.58	-0.65
7,961.0	91.30	270.00	7,402.2	52.6	-842.7	842.9	0.33	-0.33	0.00

Company:	Bayswater Exploration & Production, LLC	Local Co-ordinate Reference:	Well Hester Farms H-36HC
Project:	SEC.31-T7N-R66W	TVD Reference:	WELL @ 4936.5ft (RKB - 22.5')
Site:	Hester Farms Pad Sec.31-7N-66W	MD Reference:	WELL @ 4936.5ft (RKB - 22.5')
Well:	Hester Farms H-36HC	North Reference:	True
Wellbore:	Wellbore #1	Survey Calculation Method:	Minimum Curvature
Design:	Wellbore #1	Database:	US_EDM

Survey									
Measured Depth (ft)	Inclination (°)	Azimuth (°)	Vertical Depth (ft)	+N/-S (ft)	+E/-W (ft)	Vertical Section (ft)	Dogleg Rate (°/100usft)	Build Rate (°/100usft)	Turn Rate (°/100usft)
8,053.0	91.50	270.20	7,399.9	52.8	-934.6	934.9	0.31	0.22	0.22
8,145.0	93.10	270.20	7,396.2	53.1	-1,026.6	1,026.8	1.74	1.74	0.00
8,236.0	91.70	269.70	7,392.4	53.0	-1,117.5	1,117.7	1.63	-1.54	-0.55
8,328.0	91.20	269.70	7,390.1	52.6	-1,209.5	1,209.7	0.54	-0.54	0.00
8,420.0	89.30	268.60	7,389.7	51.2	-1,301.4	1,301.6	2.39	-2.07	-1.20
8,515.0	90.80	268.30	7,389.6	48.6	-1,396.4	1,396.6	1.61	1.58	-0.32
8,611.0	90.90	269.00	7,388.2	46.4	-1,492.4	1,492.5	0.74	0.10	0.73
8,706.0	90.50	268.30	7,387.0	44.1	-1,587.3	1,587.5	0.85	-0.42	-0.74
8,802.0	90.60	269.00	7,386.1	41.9	-1,683.3	1,683.5	0.74	0.10	0.73
8,897.0	89.80	268.60	7,385.8	39.9	-1,778.3	1,778.4	0.94	-0.84	-0.42
8,930.3	90.40	268.81	7,385.7	39.1	-1,811.5	1,811.7	1.90	1.79	0.63
WP #2 (H-36HC)									
8,992.0	91.50	269.20	7,384.7	38.1	-1,873.2	1,873.4	1.90	1.79	0.63
9,088.0	91.30	269.20	7,382.3	36.7	-1,969.2	1,969.3	0.21	-0.21	0.00
9,183.0	90.90	269.70	7,380.5	35.8	-2,064.2	2,064.3	0.67	-0.42	0.53
9,278.0	91.30	270.00	7,378.7	35.6	-2,159.2	2,159.3	0.53	0.42	0.32
9,373.0	90.60	269.50	7,377.1	35.1	-2,254.2	2,254.3	0.91	-0.74	-0.53
9,469.0	90.70	268.80	7,376.0	33.7	-2,350.1	2,350.3	0.74	0.10	-0.73
9,564.0	91.50	269.50	7,374.2	32.3	-2,445.1	2,445.2	1.12	0.84	0.74
9,660.0	92.90	269.90	7,370.5	31.8	-2,541.0	2,541.1	1.52	1.46	0.42
9,755.0	92.20	271.40	7,366.3	32.9	-2,635.9	2,636.0	1.74	-0.74	1.58
9,850.0	92.50	270.70	7,362.4	34.6	-2,730.8	2,730.9	0.80	0.32	-0.74
9,945.0	90.00	269.30	7,360.3	34.6	-2,825.8	2,825.9	3.02	-2.63	-1.47
10,041.0	88.50	269.00	7,361.6	33.2	-2,921.8	2,921.9	1.59	-1.56	-0.31
10,100.7	89.38	269.75	7,362.7	32.5	-2,981.4	2,981.5	1.94	1.47	1.26
WP #3 (H-36HC)									
10,136.0	89.90	270.20	7,362.9	32.5	-3,016.8	3,016.9	1.94	1.47	1.26
10,231.0	88.40	269.00	7,364.3	31.9	-3,111.7	3,111.8	2.02	-1.58	-1.26
10,326.0	89.30	268.10	7,366.2	29.5	-3,206.7	3,206.8	1.34	0.95	-0.95
10,421.0	90.70	269.00	7,366.2	27.1	-3,301.7	3,301.7	1.75	1.47	0.95
10,516.0	90.20	269.30	7,365.5	25.7	-3,396.6	3,396.7	0.61	-0.53	0.32
10,612.0	89.90	269.00	7,365.4	24.2	-3,492.6	3,492.7	0.44	-0.31	-0.31
10,625.6	89.83	268.94	7,365.4	24.0	-3,506.2	3,506.3	0.67	-0.53	-0.42
WP #4 (H-36HC)									
10,707.0	89.40	268.60	7,366.0	22.2	-3,587.6	3,587.7	0.67	-0.53	-0.42
10,802.0	89.70	269.70	7,366.7	20.8	-3,682.6	3,682.6	1.20	0.32	1.16
10,897.0	89.50	269.70	7,367.4	20.3	-3,777.6	3,777.6	0.21	-0.21	0.00
10,993.0	91.10	270.90	7,366.9	20.8	-3,873.6	3,873.6	2.08	1.67	1.25
11,088.0	91.40	271.10	7,364.8	22.5	-3,968.5	3,968.6	0.38	0.32	0.21
11,183.0	91.90	271.80	7,362.1	24.9	-4,063.5	4,063.5	0.91	0.53	0.74
11,278.0	90.30	270.40	7,360.2	26.7	-4,158.4	4,158.5	2.24	-1.68	-1.47
11,373.0	90.60	270.70	7,359.5	27.6	-4,253.4	4,253.5	0.45	0.32	0.32
11,468.0	90.00	271.80	7,359.0	29.7	-4,348.4	4,348.5	1.32	-0.63	1.16

Company:	Bayswater Exploration & Production, LLC	Local Co-ordinate Reference:	Well Hester Farms H-36HC
Project:	SEC.31-T7N-R66W	TVD Reference:	WELL @ 4936.5ft (RKB - 22.5')
Site:	Hester Farms Pad Sec.31-7N-66W	MD Reference:	WELL @ 4936.5ft (RKB - 22.5')
Well:	Hester Farms H-36HC	North Reference:	True
Wellbore:	Wellbore #1	Survey Calculation Method:	Minimum Curvature
Design:	Wellbore #1	Database:	US_EDM

Survey									
Measured Depth (ft)	Inclination (°)	Azimuth (°)	Vertical Depth (ft)	+N/-S (ft)	+E/-W (ft)	Vertical Section (ft)	Dogleg Rate (°/100usft)	Build Rate (°/100usft)	Turn Rate (°/100usft)
11,563.0	90.50	271.10	7,358.6	32.1	-4,443.4	4,443.5	0.91	0.53	-0.74
11,657.0	90.00	271.40	7,358.2	34.2	-4,537.3	4,537.4	0.62	-0.53	0.32
11,696.0	89.92	270.51	7,358.2	34.8	-4,576.3	4,576.4	2.30	-0.21	-2.29
WP #5 (H-36HC)									
11,753.0	89.80	269.20	7,358.3	34.7	-4,633.3	4,633.4	2.30	-0.21	-2.29
11,848.0	89.20	267.90	7,359.2	32.3	-4,728.3	4,728.4	1.51	-0.63	-1.37
11,943.0	89.60	267.60	7,360.2	28.5	-4,823.2	4,823.3	0.53	0.42	-0.32
12,052.0	90.20	268.50	7,360.4	24.8	-4,932.2	4,932.2	0.99	0.55	0.83
12,107.0	90.20	268.50	7,360.2	23.4	-4,987.1	4,987.2	0.00	0.00	0.00
BHL 1645'FNL, 470'FWL, SEC.36-T7N-R67W									

Design Targets									
Target Name - hit/miss target - Shape	Dip Angle (°)	Dip Dir. (°)	TVD (ft)	+N/-S (ft)	+E/-W (ft)	Northing (usft)	Easting (usft)	Latitude	Longitude
SHL 1694'FNL, 202'FWL - survey hits target center - Point	0.00	0.00	1.0	0.0	0.0	1,437,834.25	3,185,849.31	40.533332	-104.831381
BHL 1645'FNL, 470'FWL - survey misses target center by 23.9ft at 12107.0ft MD (7360.2 TVD, 23.4 N, -4987.1 E) - Point	0.00	0.00	7,336.5	20.6	-4,988.8	1,437,817.17	3,180,860.71	40.533387	-104.849328
WP #5 (H-36HC) - survey misses target center by 14.7ft at 11695.9ft MD (7358.2 TVD, 34.8 N, -4576.2 E) - Point	0.00	0.00	7,349.5	22.9	-4,576.4	1,437,822.62	3,181,273.02	40.533394	-104.847845
WP #4 (H-36HC) - survey misses target center by 9.4ft at 10625.6ft MD (7365.4 TVD, 24.0 N, -3506.2 E) - Point	0.00	0.00	7,357.5	29.0	-3,506.4	1,437,836.79	3,182,342.91	40.533411	-104.843996
WP #3 (H-36HC) - survey misses target center by 5.2ft at 10100.7ft MD (7362.7 TVD, 32.5 N, -2981.5 E) - Point	0.00	0.00	7,357.5	32.0	-2,981.5	1,437,843.75	3,182,867.75	40.533419	-104.842107
WP #2 (H-36HC) - survey misses target center by 1.3ft at 8930.2ft MD (7385.7 TVD, 39.1 N, -1811.5 E) - Point	0.00	0.00	7,384.5	38.7	-1,811.5	1,437,859.27	3,184,037.63	40.533438	-104.837898

Checked By: _____ Approved By: _____ Date: _____