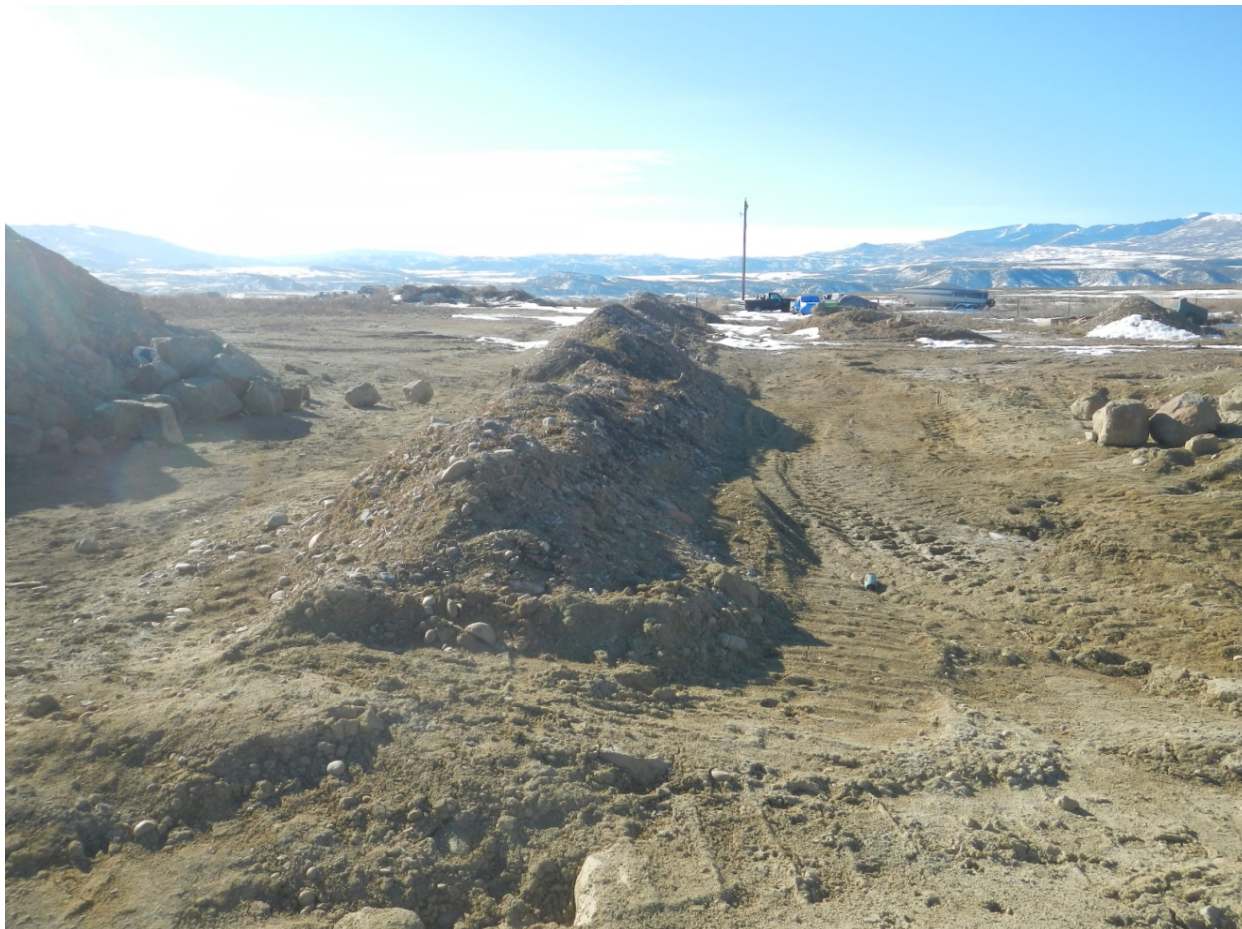




Photo#1: Over View of Location from NE corner looking to South.

February 28, 2016

Inspection Photos Mulvihill -Tiffany Orphan Loc#
335691



Photo#2: Close up of trenching and construction disturbance, view to South.

February 28, 2016

Inspection Photos Mulvihill -Tiffany Orphan Loc#
335691



Photo#3: We have Dirt, We have Rocks!

February 28, 2016

Inspection Photos Mulvihill -Tiffany Orphan Loc#
335691



Photo#4: Well located in NW portion of Pad.



Photo#5: View North to House from Pad.

February 28, 2016

Inspection Photos Mulvihill -Tiffany Orphan Loc#
335691



Photo#6: View to NW of Utilities set up and Equipment adjacent to Location Entrance. Access Road runs between House and equipment.



Photo#7: Southern Berm of Location, view to East.

February 28, 2016

Inspection Photos Mulvihill -Tiffany Orphan Loc#
335691



Photo#8: View along NE Berm to SE.

February 28, 2016

Inspection Photos Mulvihill -Tiffany Orphan Loc#
335691