

**Bird State 32-1 Facility March 1, 2016 Environmental Inspection – S. Arauza**



**Figure 1 - Well sign at entrance to location.**



Figure 2 – Trash, weeds, and debris north of entrance to location.





Figure 3 - Chemicals stored on-location lacking secondary containment.



Figure 4 - Chemicals stored on-location (black 55 gallon drum and white 5 gallon bucket contained unknown material) lacking secondary containment





Figure 5 – Burn area with trash, debris, and unused chemicals northeast of unpermitted pit.



Figure 6 - Unused dry chemicals at northeast corner of fenced-in pit area. Note stained soil in foreground leads to puddle just north of fenced-in pit area.





Figure 7 – Free fluid and oily waste north of pit area.



Figure 8 - View of unpermitted pit from the north, pit measured approximately 50'x50' and contained E&P waste. Southeast corner located at 39.577958 N, 104.568864 W.





Figure 9 – Looking north at berm located at southwest corner of pit (visible in 10/6/2014 aerial photograph below).



Figure 10 - View of southwest corner of the pit. Note sediment runoff and stressed vegetation outside of fenced-in area at southeast and southwest corners.





Figure 11 - View of pit from northeast corner.



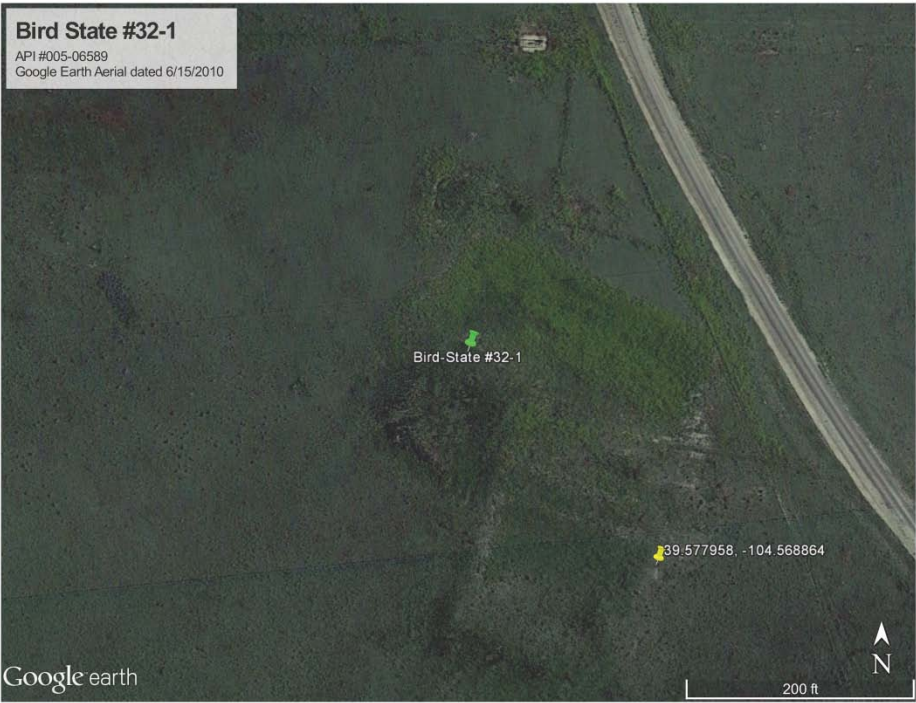
Figure 12 - Abandoned wellhead with ~2'x50' ditch leading to pit.





Figure 13 - View of ditch leading from abandoned wellhead to pit. Note presence of water and vegetation.

Google Earth Aerial Images (2010-2015)













**Bird State #32-1**

API #005-06589

Google Earth Aerial dated 10/9/2015



39.577958 - 104.568864

Google earth

200 ft