

Photos from the Chivington pit closure project

Project: 8333
Document #: 2211853
Date: 03/09/2016

September 2014



This is after a major storm event and everything is very saturated. Note the oil seeping out of side-wall of excavation. This picture is facing North West. It is difficult to gain perspective from the pictures, and the coloration of the other contamination is not very visible due to the saturation.

September 2014

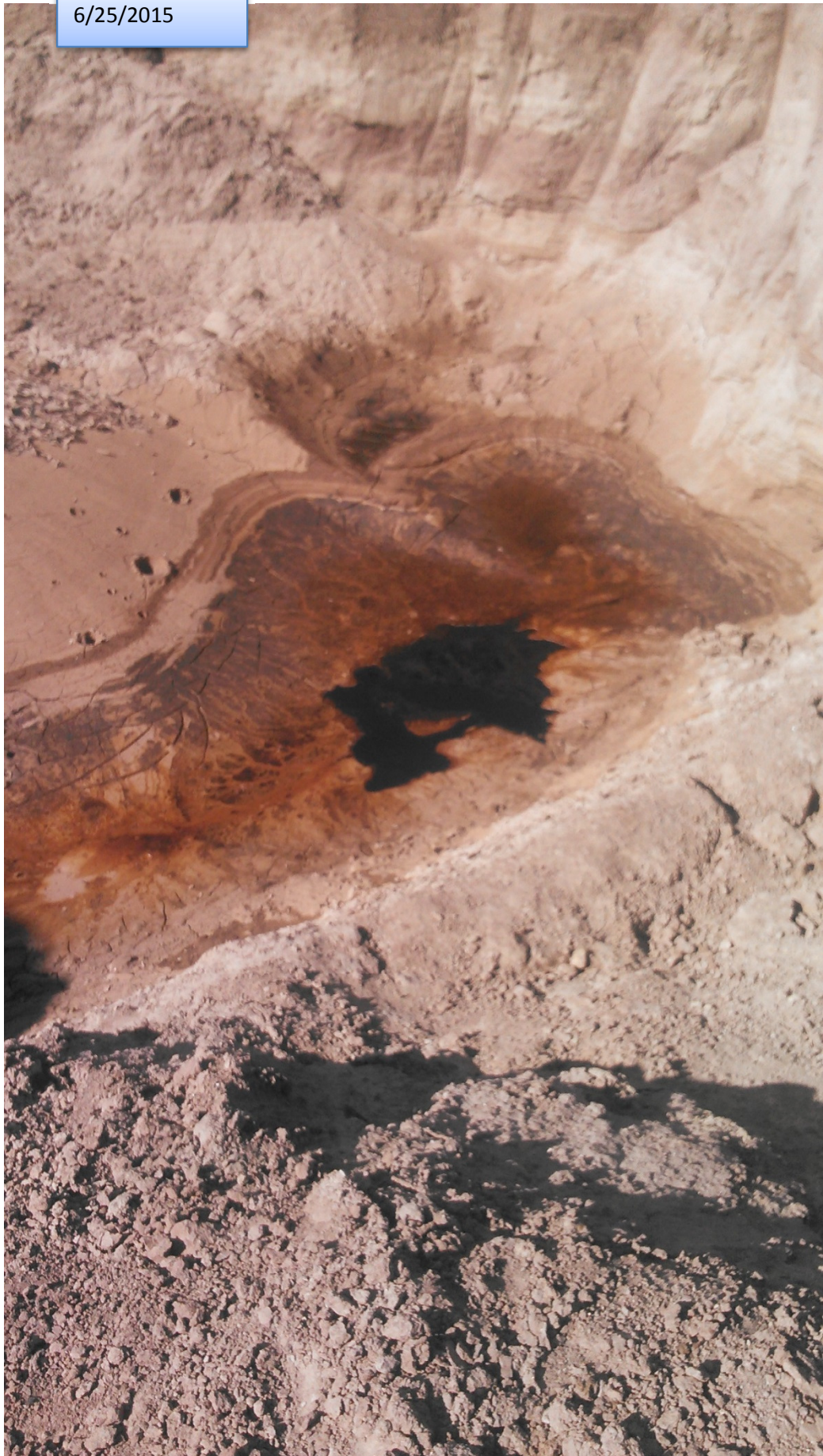


6/25/2015

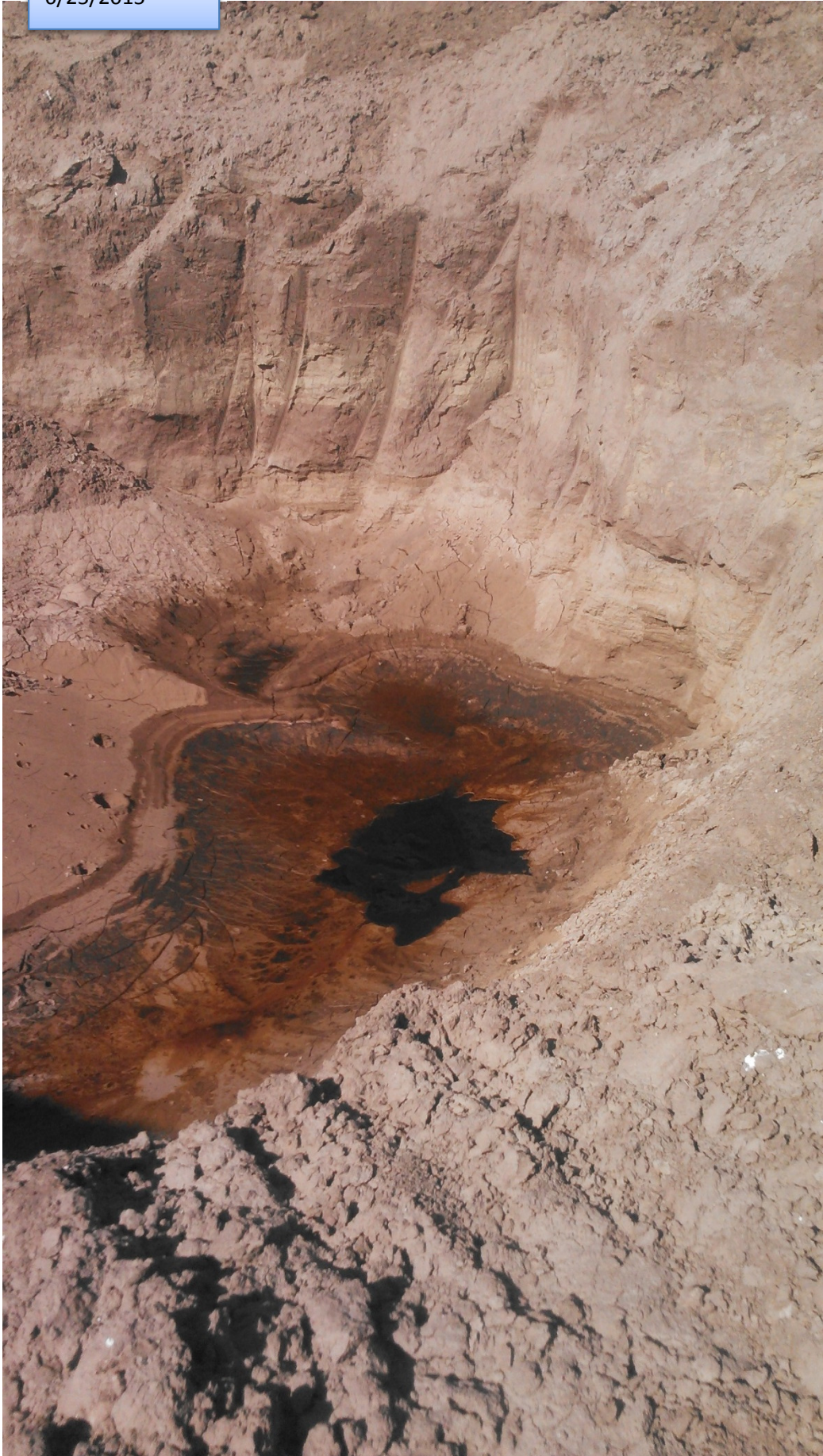


The following 3 pictures were taken after the major rain storms from June 2015. Storm-water had run into the pit. After a few days in the sun, the oil from in the ground floated to the surface. The storm-water and standing oil was sucked up with a vac truck and hauled to Great Divide Water disposal. This event did seem to greatly benefit the cleanup. The photos were taken looking down after most all of the storm-water/oil was sucked out

6/25/2015



6/25/2015



3/2/2015



3/2/2015. The soil pile in the center is contaminated, excavated from the pit bottom, working towards the south. Sample readings average around 12,000-20,000 ppm in this pile. It is difficult to see the coloration in the photos. The next photo will show the coloration. This picture is facing directly north.

3/02/2015



This picture shows the coloration typical of the contaminated soil. It is a clod taken from the pile in the previous picture in contrast to clean soil. This sample was in the 12,000ppm range. After a period of a few days in the sun, the bad soils would get much lighter in color but still smell strong of oil/ condensate and have the same VOC readings.

5/22/2015



You can note the color contrast between here and here

Contaminated soils from the southwest side. This was about where it cleaned up to the south. Again, it is difficult to see the color contrast in the picture. Also, this pile had been sitting exposed several days and had lost color. Readings of this pile were 900-8000ppm

7/25/2015



You can note the color contrast between here and here

This is another contaminated soil pile excavated from the south side. This finished the south side of pit excavation. Work on the northwest side remains.

7/25/2015



This is an example of the contamination as it is excavated. This is from the pit bottom north side. You can see the dark stained soil versus lighter color soils.

3/2/2015



This picture is from the west side looking northeast. Beginning of benching down on northwest to strip and stockpile clean soils and get safe access to north west side of pit.

4/16/2015



This Picture is standing west facing east of pit excavation as benching on west side was in process

Pit bottom (not Visible here)

This Picture is standing North Facing South

2/17/2016

South Hole

Pit Bottom (Not visible)

Clean Spoil Pile



North upper hole

Clean Spoil pile

Access road Benching

2/17/2016

Tank Battery Excavation



This picture is standing on clean spoil pile to the North of pit excavation facing to the south east

North upper hole

South hole, Where contaminated pocket and trash was found

Pit Bottom (Not Visible)

2/17/2016

Pit Bottom (not Visible)



This Picture is Standing on the west facing east. The bottom 20'-30' of the pit is not visible here.

This is an access road-bench area to mid-way down the pit. This is where soil from bottom with excavator working in pit bottom is placed and accessed with a loader and brought to surface and is loaded to trucks.

2/17/2016

Clean Soil Spoil pile



This is standing southwest facing northeast of the Pit Excavation. The bottom 20'-30' of the pit is not visible

2/17/2016



This picture is of tank battery Excavation standing south west facing north east

Deeper section (bottom not visible)

2/17/2016



This picture is of the tank battery excavation to the southeast. This is facing to the north. The standing water in the pit is storm water as most of the snow had melted. The pits had trapped a large amount of drifting snow over the winter. This came from the snow-melt from drifts trapped in the pit

2/17/2016



This Picture is facing north. The center of the picture is the north upper hole where the pocket of contamination was found.

2/17/2016



This picture is standing midway in Pit excavation looking down to pit bottom. It is difficult to get a depth perspective here that is about a 60' diameter in the bottom of the pit. There is no standing water in this pit.