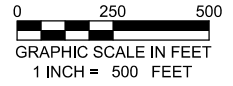
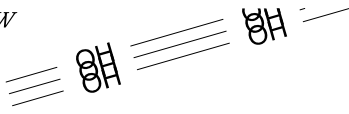


Section 7  
T. 7 S., R. 93 W



Youberg  
Beaver Creek Ranch

BLM

BLM

T. 7 S., R. 94 W  
Section 12

T. 7 S., R. 93 W  
Section 7

500' Buffer

Youberg  
Beaver Creek Ranch

BLM

CURRENT LAND USE		
<input type="checkbox"/> CROP LAND	<input checked="" type="checkbox"/> NON-CROP LAND	<input type="checkbox"/> SUBDIVIDED
<input type="checkbox"/> IRRIGATED	<input checked="" type="checkbox"/> RANGELAND	<input type="checkbox"/> INDUSTRIAL
<input type="checkbox"/> DRY LAND	<input type="checkbox"/> TIMBER	<input type="checkbox"/> COMMERCIAL
<input type="checkbox"/> IMPROVED PASTURE	<input type="checkbox"/> RECREATIONAL	<input type="checkbox"/> RESIDENTIAL
<input type="checkbox"/> HAY MEADOW	<input checked="" type="checkbox"/> OTHER (describe): Existing Pad	
<input type="checkbox"/> CRP		

REVISED: 2/24/16

136 East Third Street  
Rifle, Colorado 81650  
Ph. (970) 625-2720  
Fax (970) 625-2773



SCALE: 1" = 500'  
DATE: 2/11/16  
PLAT: 6 of 7  
PROJECT: Valley  
DFT: cws

**Construction Plan Prepared for:**  
**WPXENERGY** WPX Energy Rocky Mountain, LLC

RU 22-7 Drill Pad - Plat 6  
LOCATION

*Visible Improvements to Well Head (ft.)*

<i>Description</i>	<i>Building</i>	<i>Building Unit</i>	<i>High Occu. Building</i>	<i>DOAA</i>	<i>Public Road</i>	<i>Above Ground Utility</i>	<i>Railroad</i>	<i>Property Line</i>
A6 RU 323-7	>5280	>5280	>5280	>5280	277° 3440	344° 2406	>5280	89° 794
A7 RU 31-7	>5280	>5280	>5280	>5280	277° 3443	344° 2400	>5280	89° 791
B1 RU 523-7	>5280	>5280	>5280	>5280	277° 3420	344° 2431	>5280	89° 816
B2 RU 423-7	>5280	>5280	>5280	>5280	277° 3422	344° 2425	>5280	89° 814
B3 RU 322-7	>5280	>5280	>5280	>5280	277° 3424	344° 2419	>5280	89° 811
B6 RU 512-7	>5280	>5280	>5280	>5280	277° 3431	344° 2400	>5280	89° 803
B7 RU 321-7	>5280	>5280	>5280	>5280	277° 3433	344° 2394	>5280	89° 801

*Production Equipment*

Seperators	>5280	>5280	>5280	>5280	277° 3378	344° 2519	>5280	89° 827
Tanks	>5280	>5280	>5280	>5280	277° 3288	344° 2471	>5280	89° 937

REVISED: 2/24/16

136 East Third Street  
Rifle, Colorado 81650  
Ph. (970) 625-2720  
Fax (970) 625-2773



SCALE: 1" = 500'  
DATE: 2/11/16  
PLAT: 6B of 7  
PROJECT: Valley  
DFT: cws

**Construction Plan Prepared for:**  
**WPXENERGY** WPX Energy Rocky Mountain, LLC

*RU 22-7 Drill Pad - Plat 6-B*  
*LOCATION TABLE*