



CEMENT BOND LOG GAMMA RAY C C L V D L

Company Noble Energy IIIC. Well ROTHE STATE B 36-08 Field Wattenberg County Weld State Colorado	Company Noble Energy INC.	
	Well ROTHE STATE B 36-08	
	Field Wattenberg	
	County Weld	State Colorado
	Location: API #: 051231670500 SE NE SEC 36 TWP 5N RGE 64W Permanent Datum GL Elevation 4597 Log Measured From KB 10' Drilling Measured From KB	
		Other Services
		Elevation
		K.B. 4607 D.F. 4607 G.L. 4597

Date	November 17, 2010		
Run Number	ONE		
Depth Driller	6817		
Depth Logger	5338		
Bottom Logged Interval	5337		
Top Log Interval	1380		
Casing Size	Surf: 2.875 N-80	6.5lb/ft Surf	5225
Type Fluid	Water	7.7 lb/ft N-80 Butt.	5225-6817
Max. Recorded Temp.	Not Recorded		
Estimated Cement Top	1672		
Time Well Ready	PM		
Time Logger On Bottom	PM		
Unit Number	3344		
Tool Size / ID Number	1 11/16" Tool 1 RED		
Location	Platteville, CO		
Recorded By	K. Monaghan		
Witnessed By	E. Zwaagstra		

Borehole Record				Tubing Record			
Run Number	Bit	From	To	Size	Weight	From	To

Casing Record	Size	Wgt/Ft	Top	Bottom
Surface String				
Prot. String				
Production String	2.875	6.5lb/ft & 7.7 lb/ft	Surface- 5225	5225-6817
Liner				

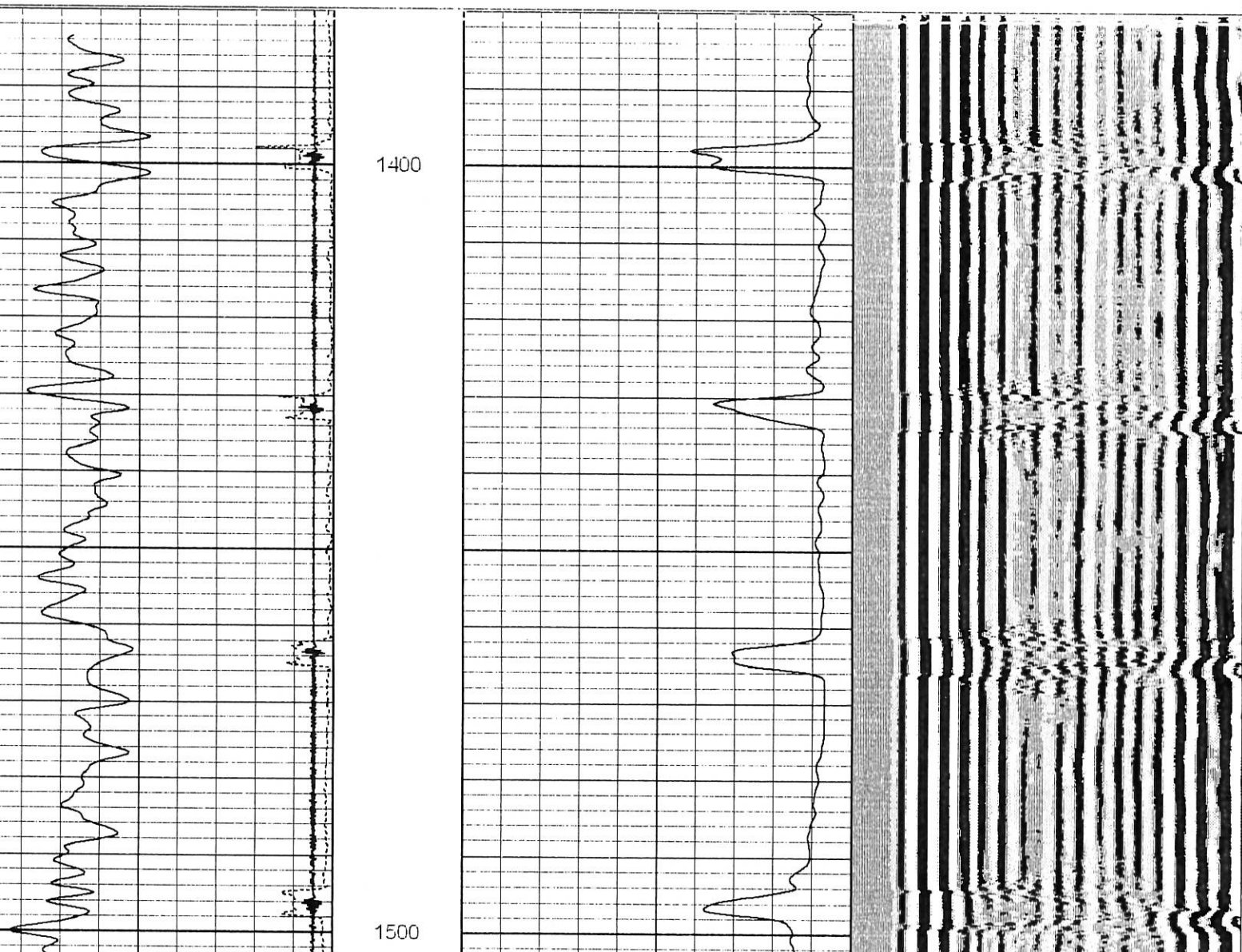
All interpretations are opinions based on inferences from electrical or other measurements and we cannot and do not guarantee the accuracy or correctness of any interpretation, and we shall not, except in the case of gross or willful negligence on our part, be liable or responsible for any loss, damages, or expenses incurred or sustained by anyone resulting from any interpretation made by any of our officers, agents or employees. These interpretations are also subject to our general terms and conditions set out in our current Price Schedule.

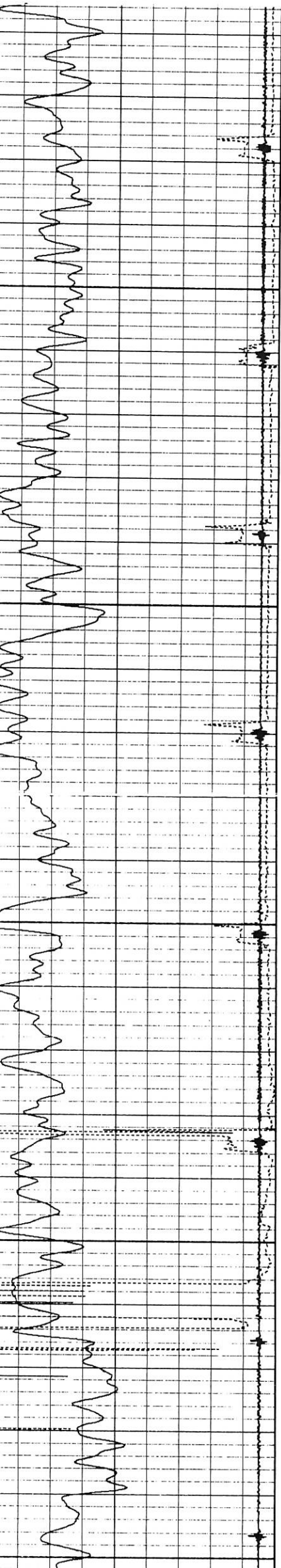
Comments

Thank You For Choosing Superior Well Services!!!
API# 05-12316705-00
LOG NOT CORRELATED TO OPEN HOLE!
ZERO @ 10' KB

Database File: cblrothe state bt 36-08.db
Dataset Pathname: pass10
Presentation Format: nuexcbl
Dataset Creation: Wed Nov 17 14:25:48 2010 by Log Std Casedhole 10081
Started by: Depth in Feet scaled 1:240

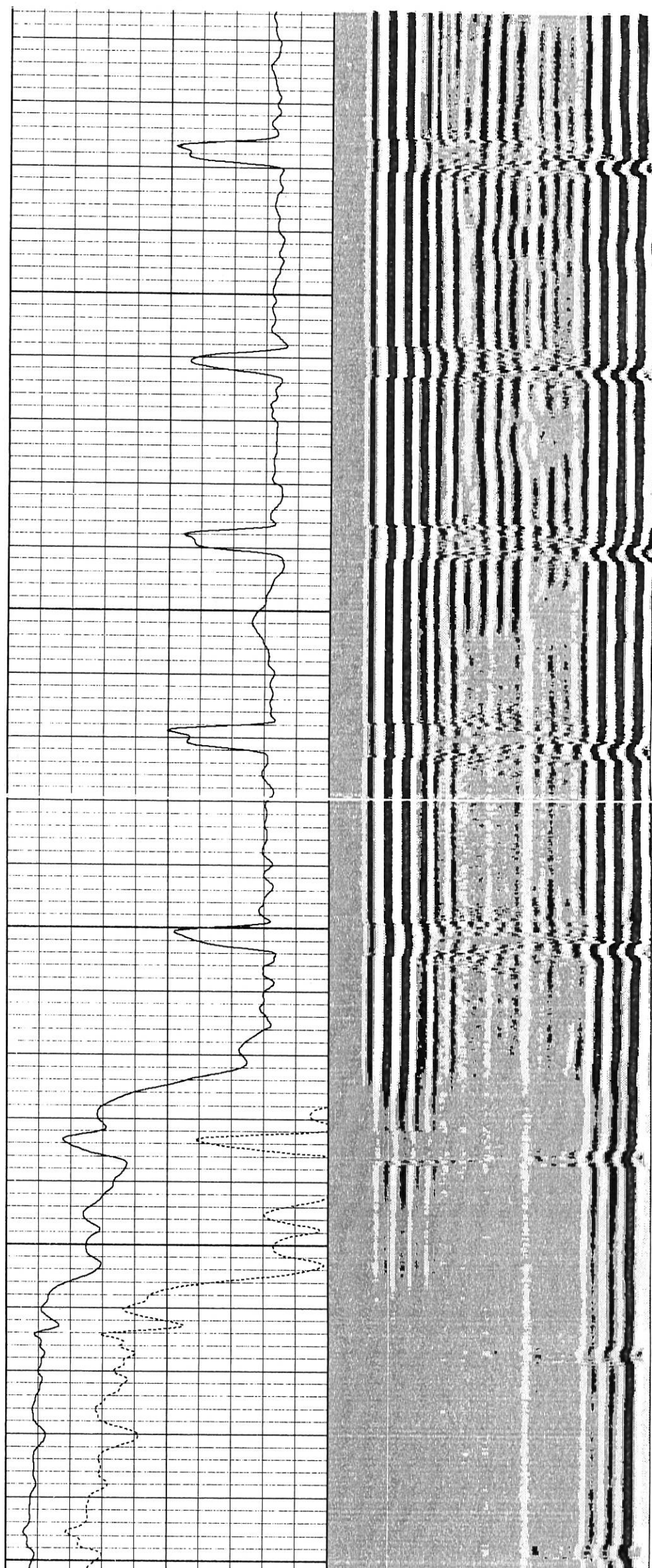
CCL	-1	0	Amplified Amplitude (mV)	30	200	Variable Density	1200
Gamma Ray (GAPI)	130	0	Amplitude (mV)	100			
TT3 (usec)	240						

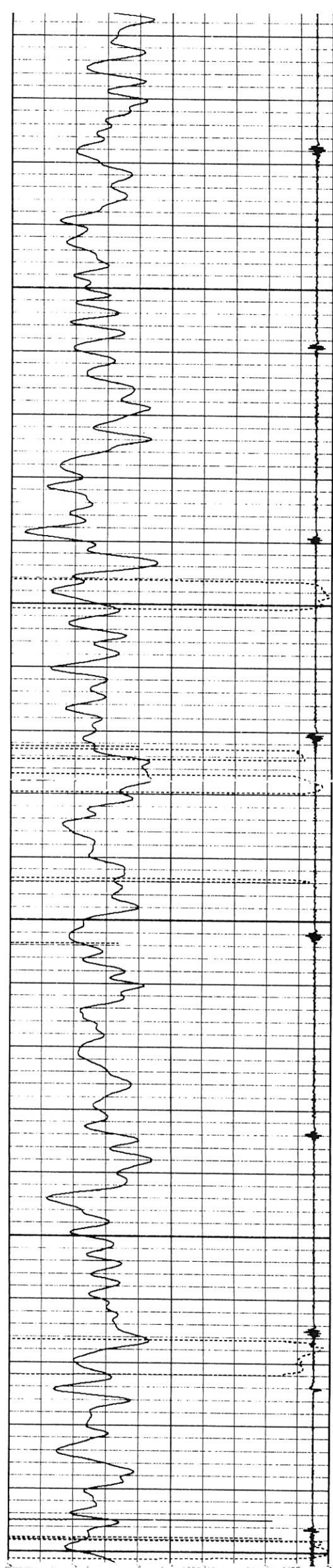




1600

1700

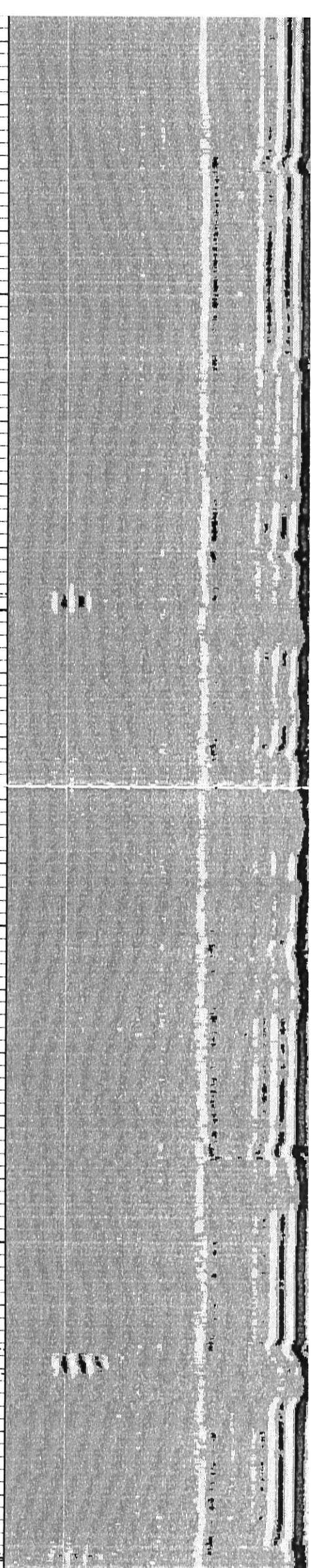
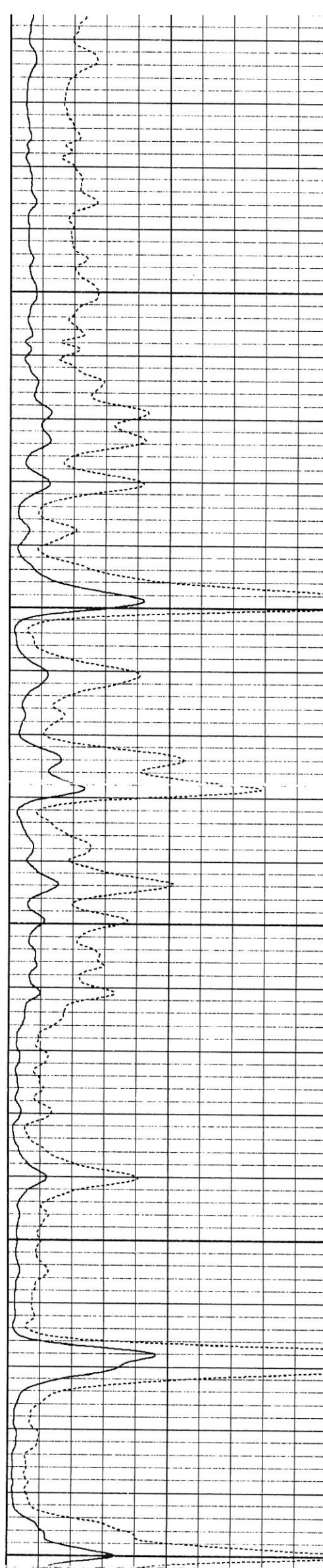


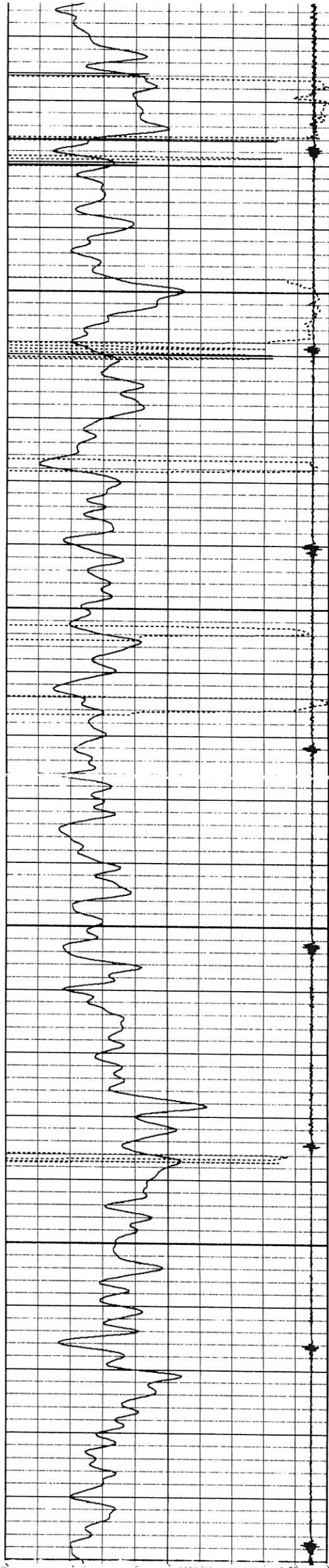


1800

1900

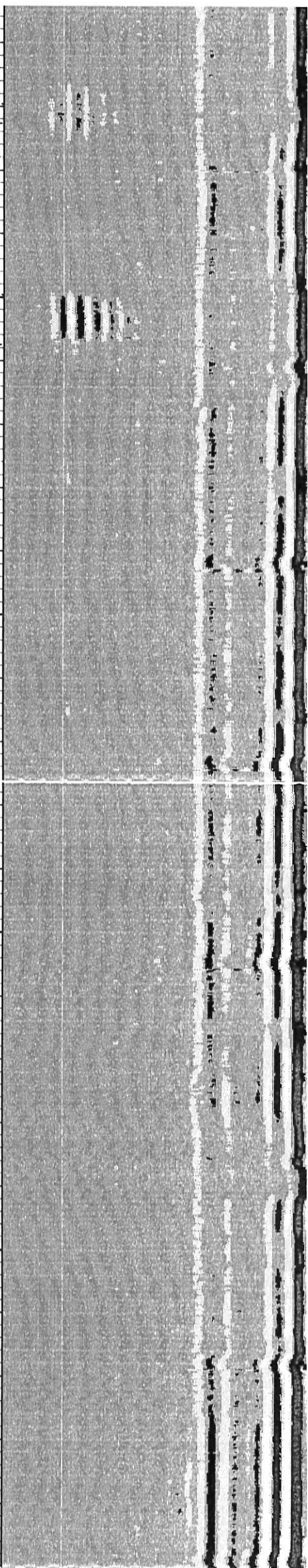
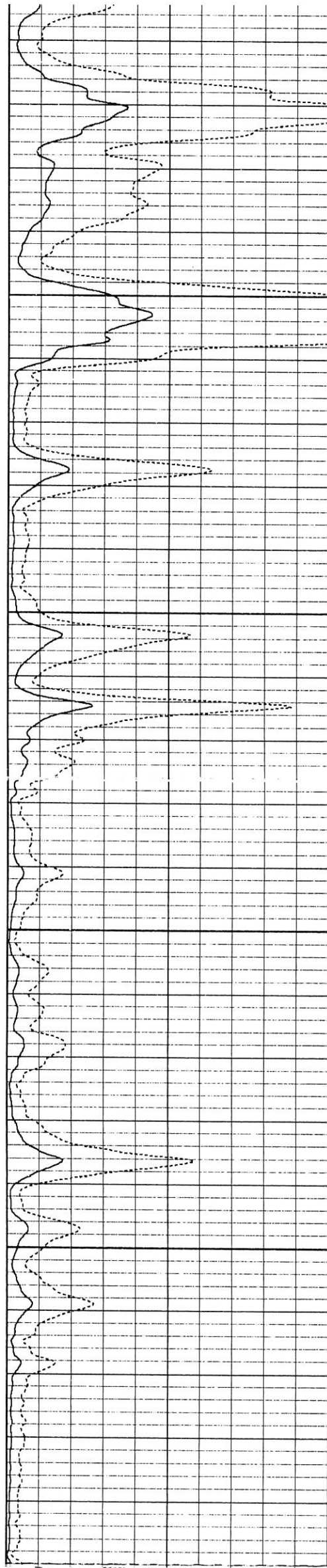
2000

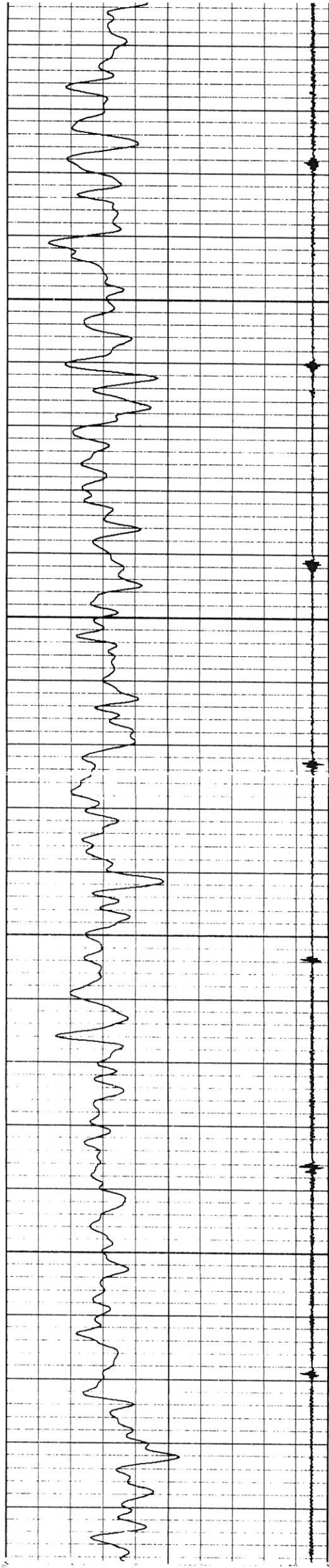




2100

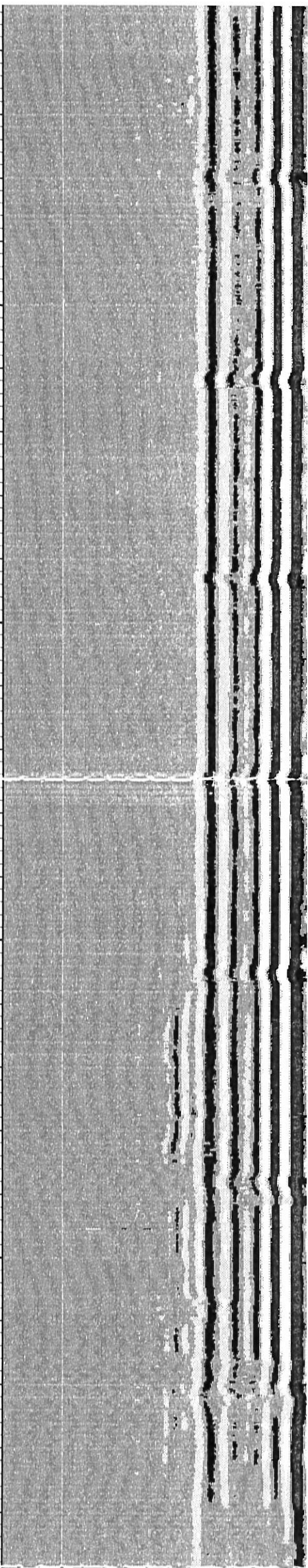
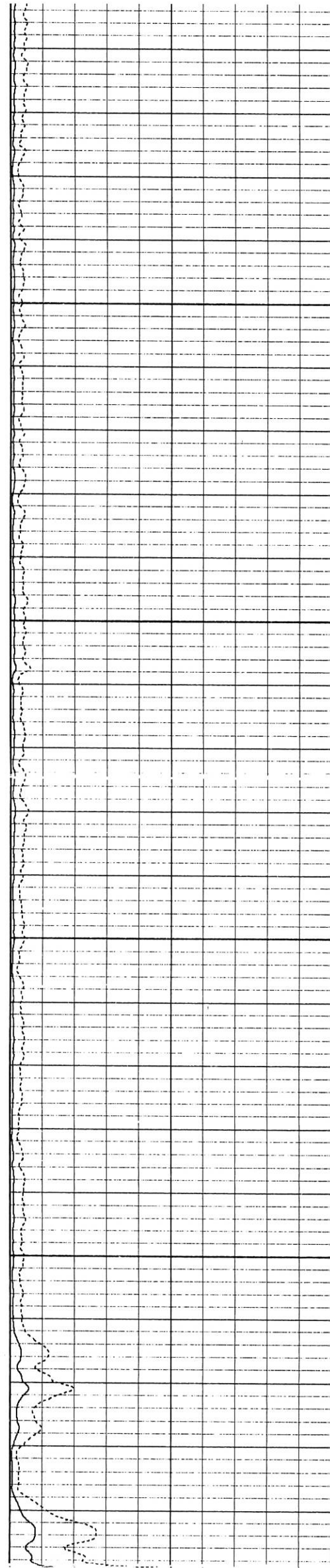
2200

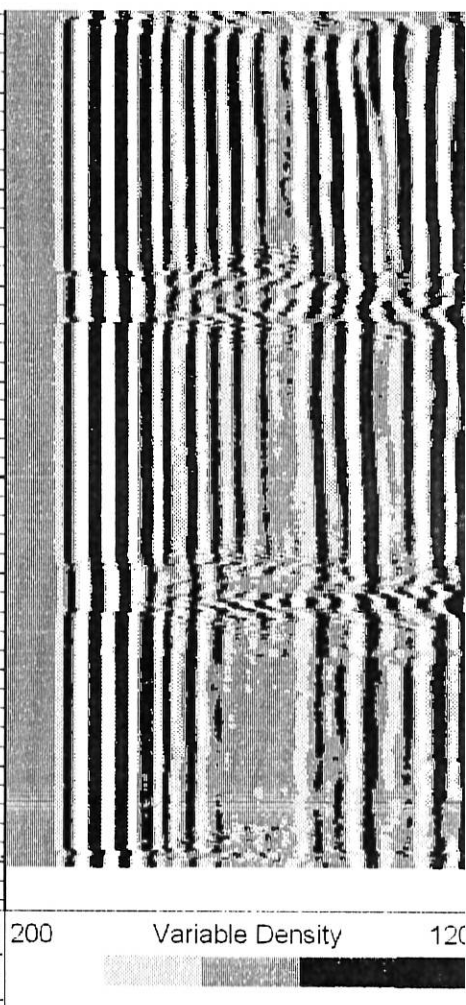
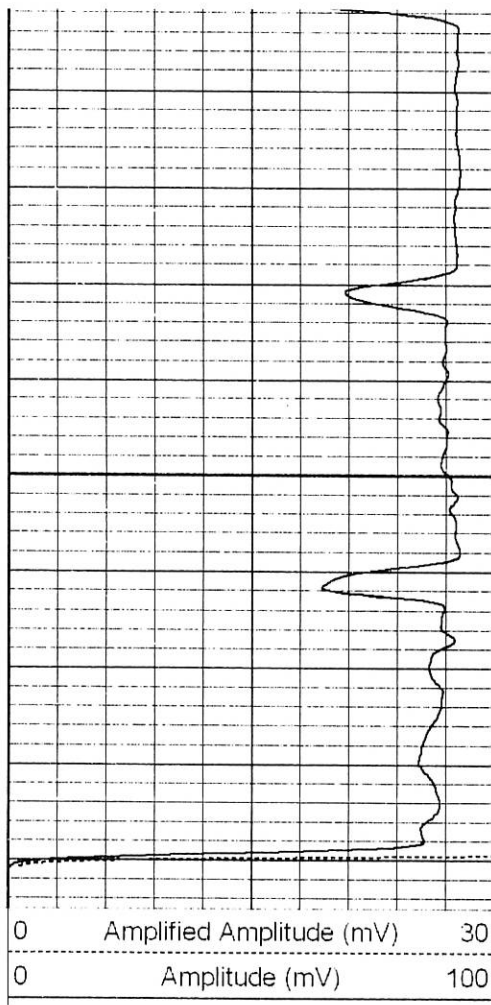
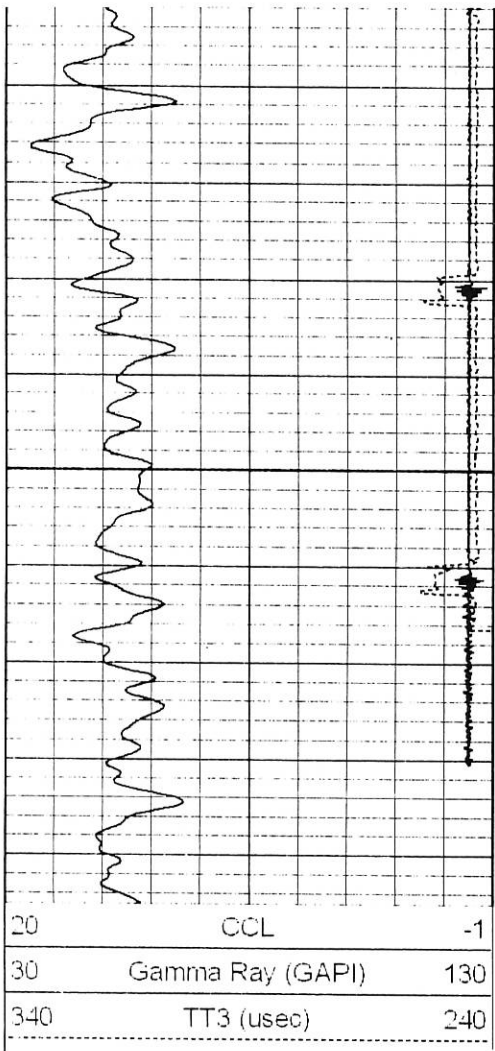




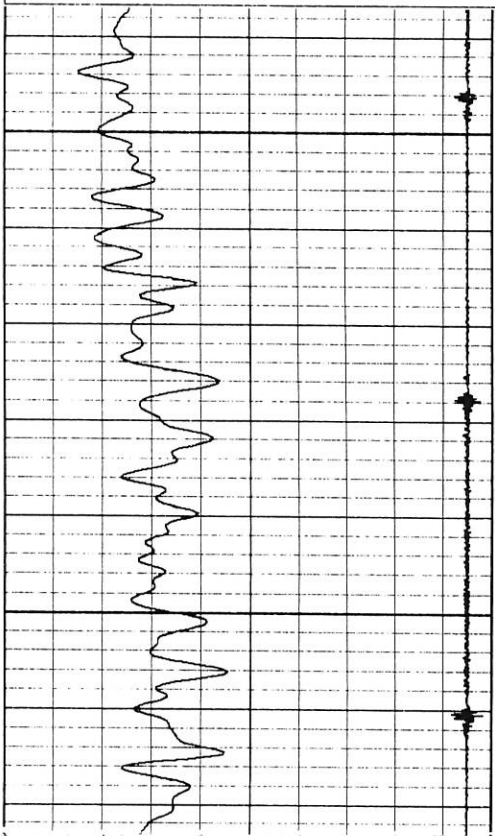
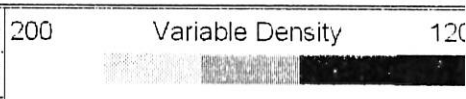
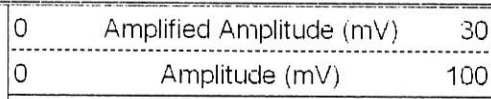
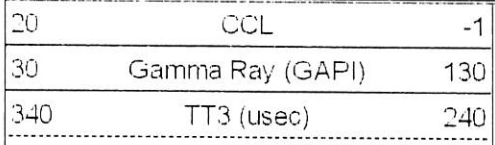
2300

2400

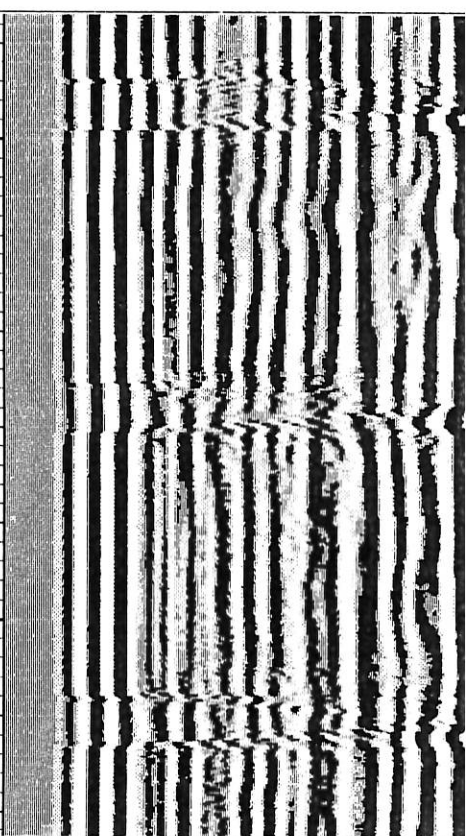
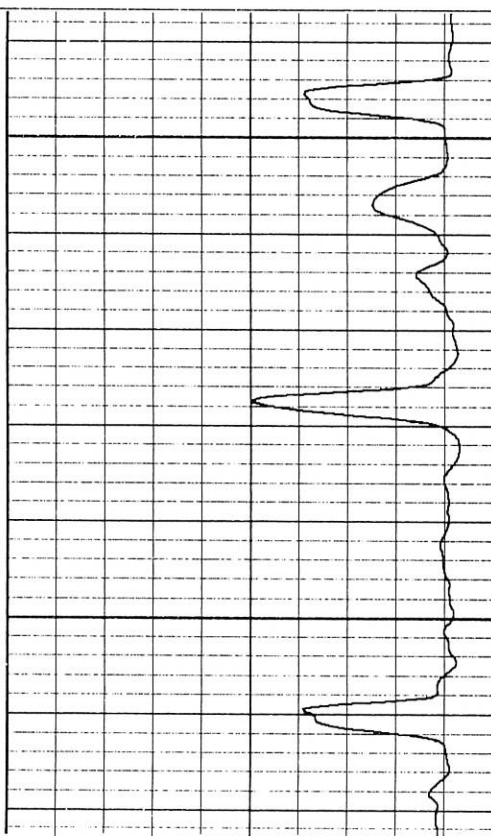


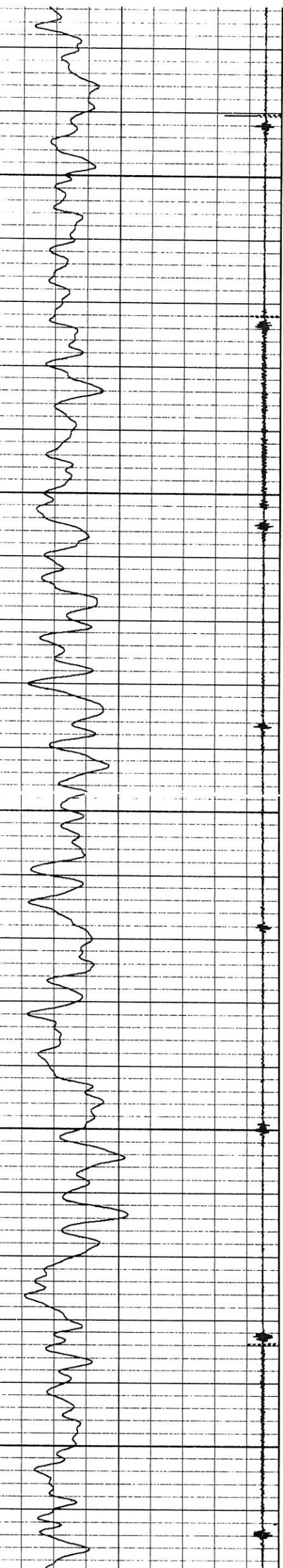


Database File: cbirothe state bt 36-08.dlb
Dataset Pathname: pass8
Presentation Format: nuexcb1
Dataset Creation: Wed Nov 17 14:11:29 2010 by Log Std Casedhole 10081
Charted by: Depth in Feet scaled 1:240



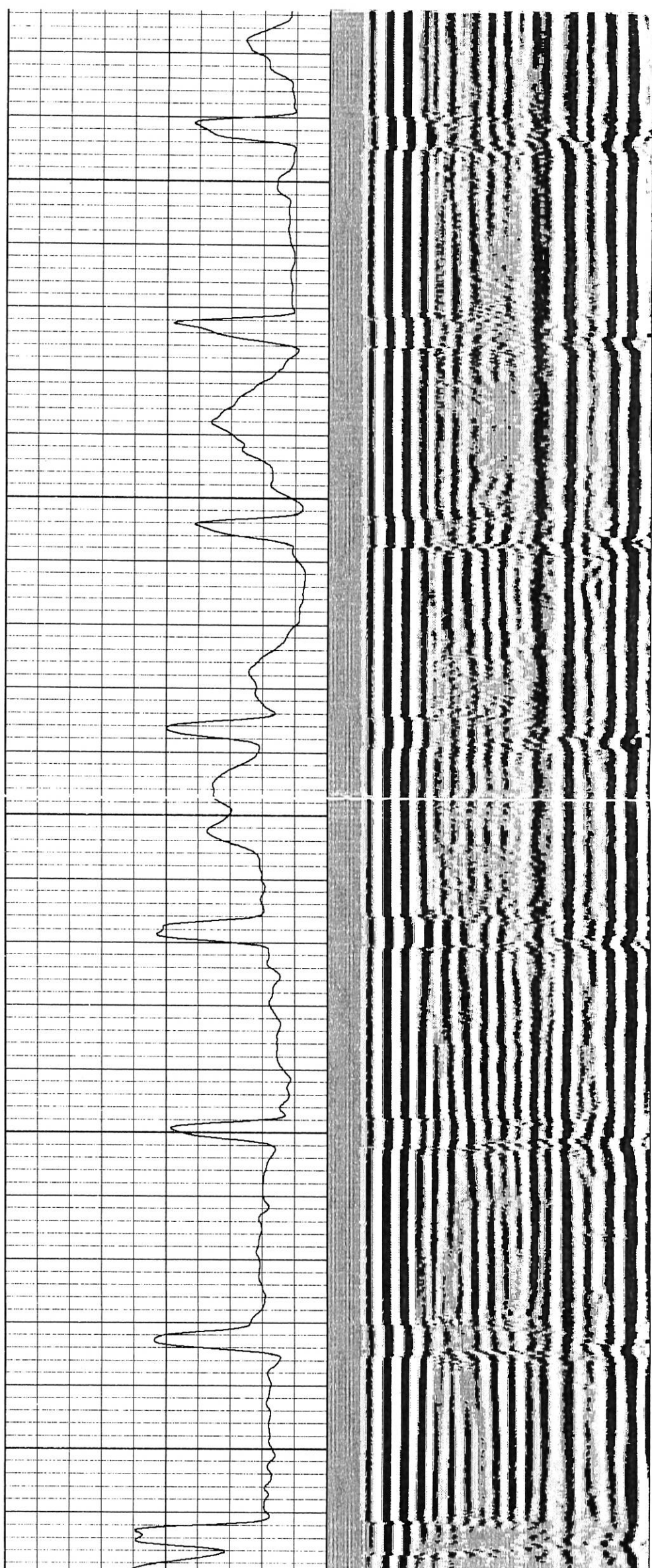
4500

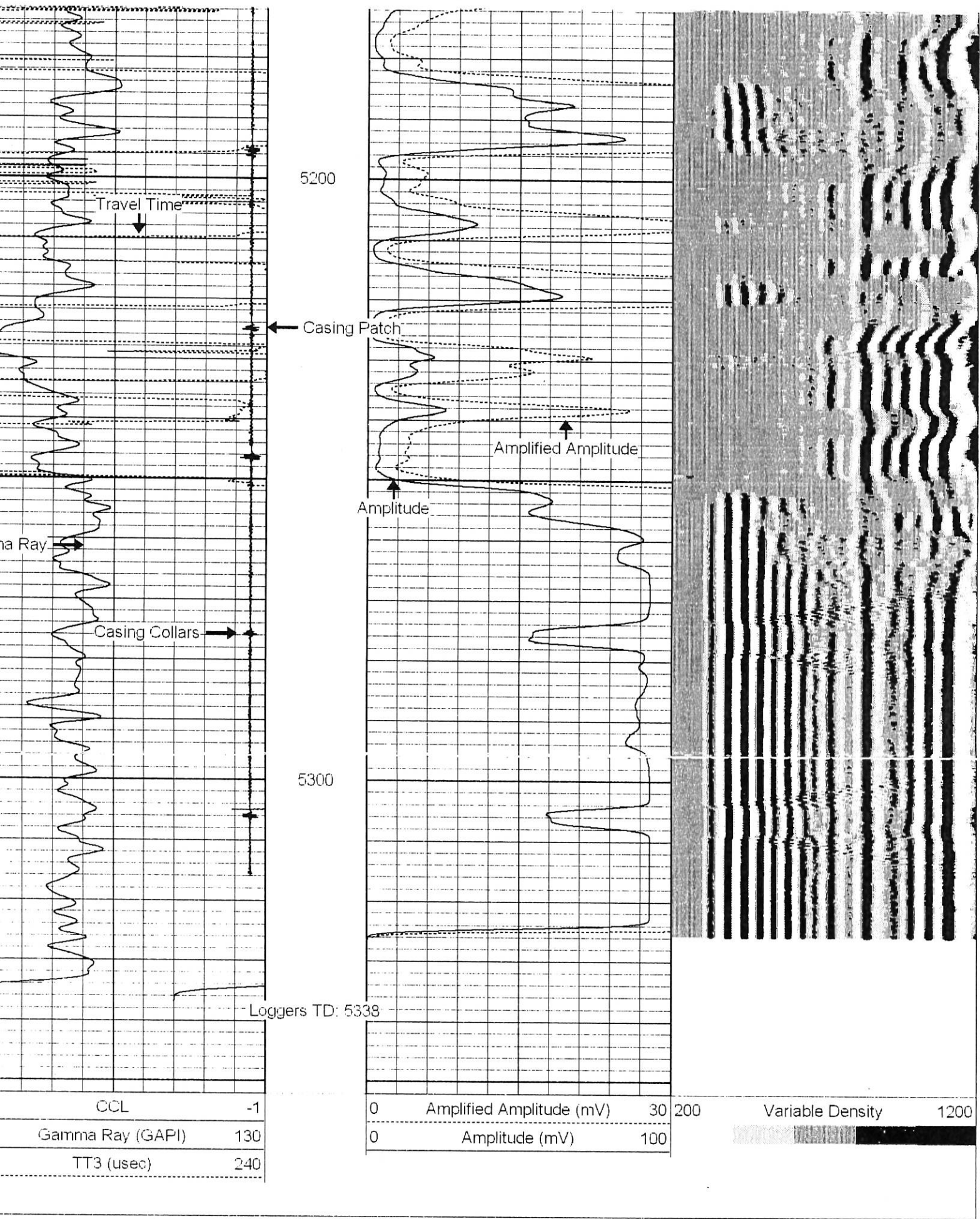




5000

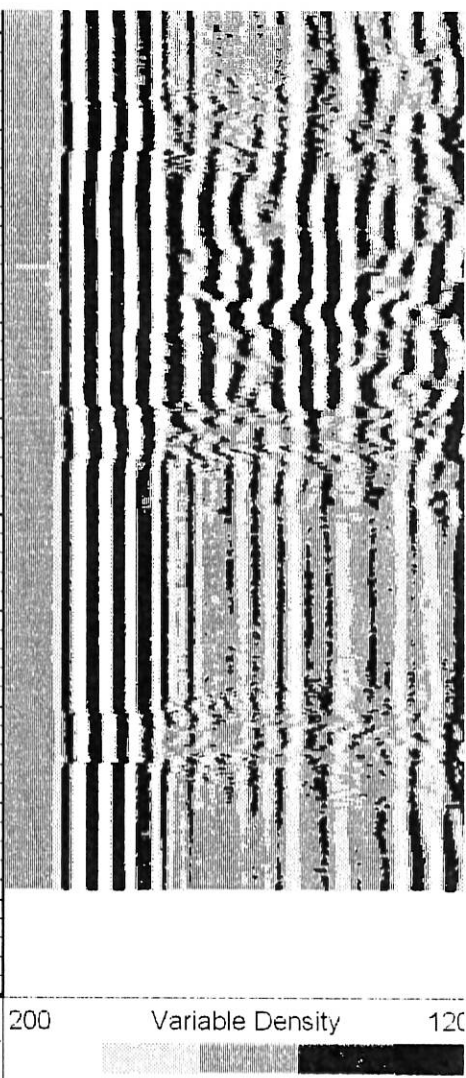
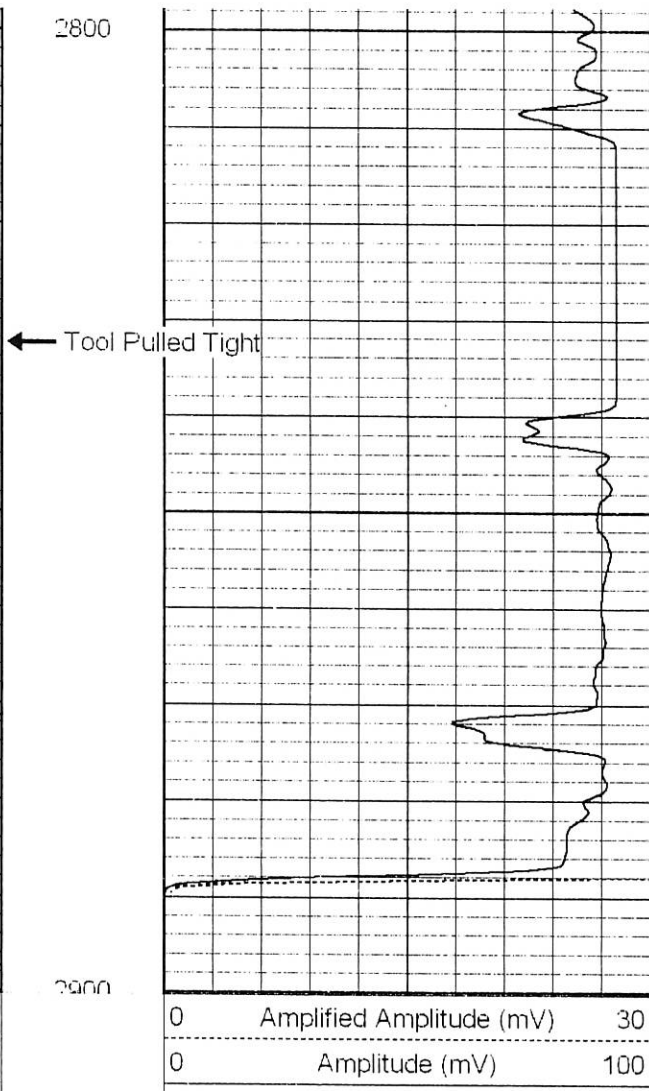
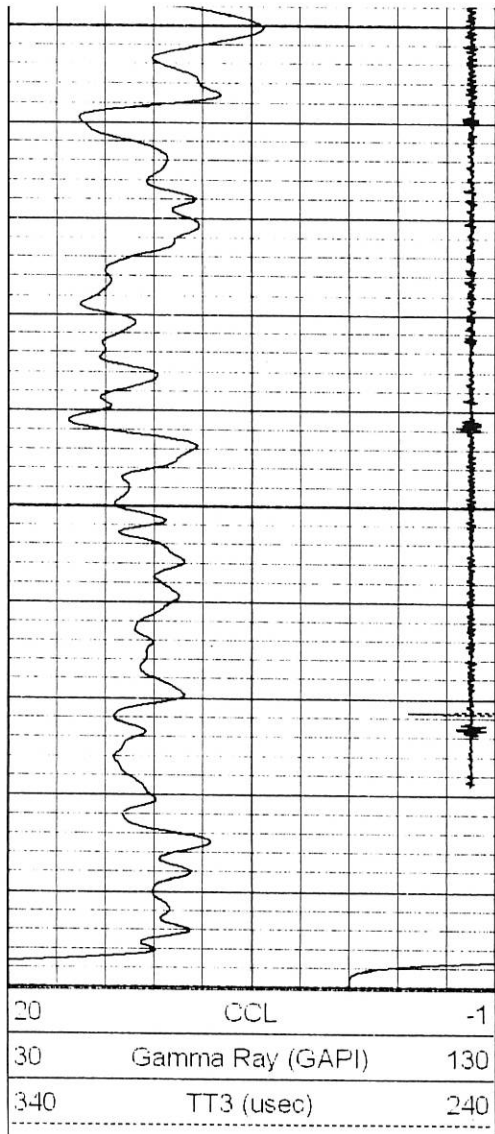
5100





Database File: cblrothe state bt 36-08.db
Dataset Pathname: pass9
Presentation Format: nuexcbl
Dataset Creation: Wed Nov 17 14:23:33 2010 by Log Std Casedhole 10081
Started by: Depth in Feet scaled 1:240

CCL	-1	0	Amplified Amplitude (mV)	30	200	Variable Density	1200
Gamma Ray (GAPI)	130	0	Amplitude (mV)	100			
TT3 (uSec)	240						



Calibration Report

Database File: cblrothe state bt 36-08.db
Dataset Pathname: pass10
Dataset Creation: Wed Nov 17 14:25:48 2010 by Log Std Casedhole 10081

Gamma Ray Calibration Report

Serial Number: tit/temp
Tool Model: temp/tit
Performed: Wed Nov 17 14:10:03 2010
Calibrator Value: 1.2 GAPI
Background Reading: 0.0 cps
Calibrator Reading: 1.0 cps
Sensitivity: 1.2000 GAPI/cps

Cement Bond Log Calibration Report

Serial Number: TEKCO-01
Tool Model: TEKCO-1x2
Performed: Mon Nov 15 09:33:49 2010
Depth: 221.675 ft
Casing Diameter: 2.875 in
3' Spacing 5' Spacing
Signal Zero: 0.5 0 mV
Calibrated Amplitude: 2.5 106.451 mV
Reading at Signal Zero: -0.0116211 -0.0115967 V
Reading in Free Pipe: 2.46943 2.5 V
Gain: 37 42.3838
Offset: 0.509368 0.491511